

Jayco | 2025 Pinnacle Fifth Wheel



PINNACLE

TOP OF THE LINE LUXURY

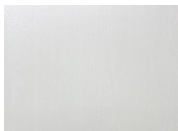
2+3
YEAR | YEAR
WARRANTY



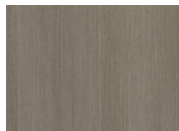


VINTAGE FARMHOUSE

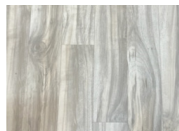
MODERN FARMHOUSE



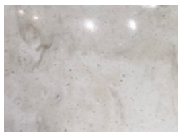
Main Wood



Accent Wood*



Floor



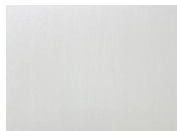
Countertop



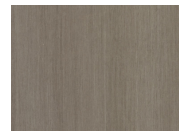
Main Fabric



Accent Fabric



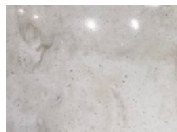
Main Wood**



Accent Wood



Floor



Countertop



Main Fabric



Accent Fabric

*Accent Wood featured on island and entertainment center

**Main Wood featured on island and entertainment center

OPTIONS

A



20 Cu. Ft. Fridge

B



Queen Bed

C



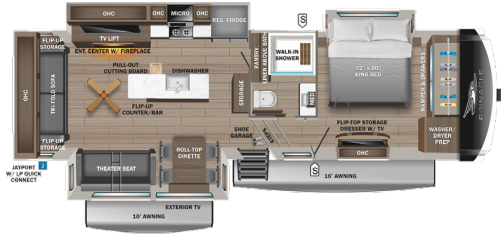
Butler Pantry

D

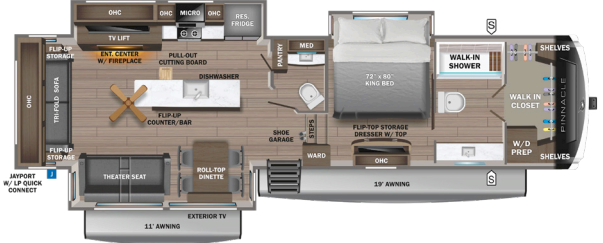


Front Wardrobe

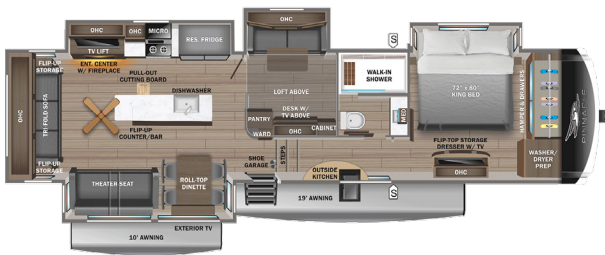
32RLTS OPTIONS: A, B



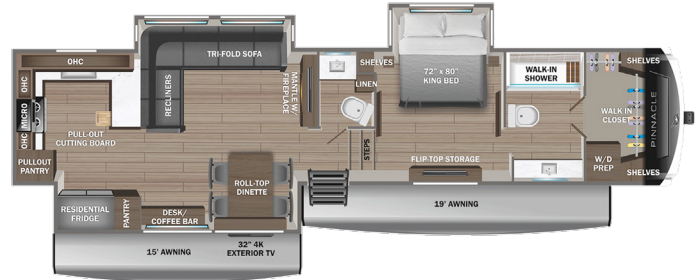
36FBTS OPTIONS: A, B



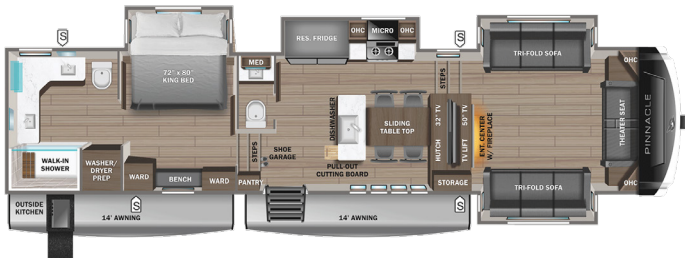
37MDQS OPTIONS: A, B



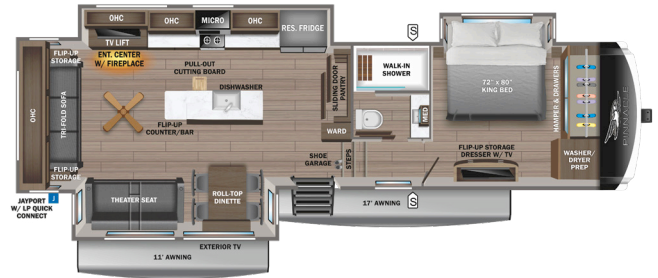
38FBRK OPTIONS: A, B



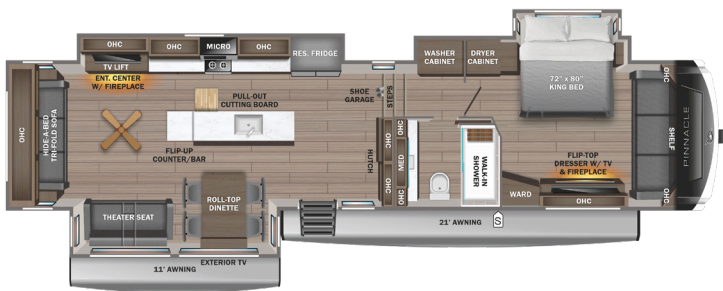
38FLGS OPTIONS: A, B, C



38KPTS OPTIONS: A, B



38SSWS OPTIONS: A, B, D



STORAGE



MICROWAVE



OVERHEAD CABINETS



REFRIGERATOR



WARDROBE

PAINT OPTIONS



Midnight Charcoal Full-Body Paint



Midnight Gold Full-Body Paint



Silver Metallic Full-Body Paint

STANDARDS & OPTIONS

EXTERIOR

(3) 40 lb. LP propane bottles with auto regulator (120 lb. max LP system)
 102 in. widebody construction
 12 in. structural steel I-beam with 10 in. steel drop frame
 120V heat blankets on all tanks plus 12V heat tape on fresh water line
 3,000 lb. tow hitch with 4-way pin
 Battery disconnect
 Built in sewer hose carrier
 Climate Shield™ zero-degree tested weather protection:
 40,000 BTU output furnace
 Double layer fiberglass batt insulation (roof and floor)
 Fully enclosed and heated underbelly (ducted)
 PEX plumbing, 2 in. block foam and reflective foil
 Custom automotive-grade vinyl exterior graphics package
 Exterior marine-grade speakers with Bluetooth® controller
 Frameless dark tinted safety-glass windows
 Fully enclosed, universal docking center:
 Black tank flush
 Independent satellite wiring
 Quick-connect outside shower
 Selectable water connections
 Whole coach cable hooks
 Winterization and sanitation hookups
 Inverter pre-wire to select outlets
 JayPort outside griddle prep (standard on all floorplans without a standard outside kitchen)
 JaySMART™ (Safety Markers And Reverse Travel) LED lighting (patented)
 LED exterior lighting package
 Magnum Truss™ XL6™ Roof System (strongest tested roof in the industry)
 with Alpha roof membrane system with limited lifetime warranty
 Painted fiberglass front and rear cap with clear coat and built-in specialty LED lighting
 Pass-through storage with Slam-latch™ baggage doors
 Skirt metal enclosed drop frame
 Stronghold VBL™ aluminum framed and vacuum bond laminated gel coated fiberglass exterior walls (including slide room end walls)
 Under-mounted spare tire
 Water heater bypass

INTERIOR

12V charging station
 5/8 in. tongue-and-groove joined plywood floor and 3/8 in. plywood roof decking
 Bathroom skylight
 Built-in laundry hamper in wardrobe (select models)
 Carbon monoxide and LP detector
 Cedar-lined front wardrobe closet
 Ceiling fan (select models)
 CPAP prepped bedroom
 Extra 120V power outlets in kitchen and slide rooms
 Flip-up countertop extension/bar top (select models)
 Flip-up hidden storage in bedroom chest of drawers (select models)
 Flip-up tabletop storage next to tri-fold sofa (select models)
 Gas-strutted under-bed storage
 Handcrafted hardwood glazed doors, stiles, drawers and trim
 Hidden hinges, magnet latches and soft close cabinet doors and drawers

Integrated under-mount sink and lever faucet in main bathroom
 LED accent lighting above slideouts
 LED backlit custom framed mirror and medicine cabinet (most models)
 LED interior lighting throughout
 No in floor heat ducts throughout coach
 Pantry with adjustable shelves and pull out drawers includes 120V outlet (most models)
 Porcelain toilet with foot flush
 Removable tray tables at theater seats
 Residential "Do it all" sink with pull-out kitchen faucet, glass rinse, and vegetable rinse
 Residential dove tailed jointed drawers throughout
 Residential NuVo H2O whole coach water treatment system with water softening and triple cartridge filters
 Residential quilted bedspread and pillows
 "Shoe garage" in hallway step (select models)
 Soft close, heavy-duty, 75 lb. full extension, steel ball-bearing drawer guides
 Solid hardwood slide fascia
 Stain protected fabric on all furniture
 Toe kick nightlights in bedroom, bathroom and kitchen
 Tri-fold hide-a-bed sofa with sleep surface (select models)
 Vinyl flooring (made in the USA) throughout including slide rooms

CUSTOMER VALUE PACKAGE (MANDATORY)

15,000 BTU "Whisper Quiet" A/C (bedroom)
 15,000 BTU "Whisper Quiet" A/C with heat pump (main)
 16 gal. gas/electric DSI water heater
 50 in. 4K SMART LED HDTV with fully digital HDMI® output and two additional HDMI® cables
 Backup, main entrance door and side observation security camera prep (includes a power switch in the bedroom to use the optional 7 in. monitor for security)
 Custom machined aluminum rims
 Electric patio awning with integrated RGB LED lights (multi-colored with remote control)
 Hidden hinges, magnet latches, and soft close cabinet doors
 JBL® home entertainment system with sound bar and wireless subwoofer
 Keyed-Alike™ lock system (single key for all doors/locks)
 MORryde Safe-T-Rail grab handle
 Residential king (72 in. x 80 in.) mattress with under-bed storage
 Rooftop and ground solar prep
 Wireless remote control system (includes Bluetooth® wireless interior controls) with dimmer switches

LUXURY PACKAGE (MANDATORY)

2nd electric patio awning with integrated RGB LED lights (multi-colored with remote control)
 32 in. 4K outside Smart LED TV
 32 in. 4K Smart LED bedroom TV
 6-point hydraulic auto-leveling system
 Cellular prep for 5G Wi-Fi and JAYCOMMAND®
 Central vacuum system with dust port
 Day/night roller shades in living room
 Frameless dark tinted safety-glass windows

Free-standing roll top (no pedestal) table with (2) free-standing and (2) folding chairs
 GE 21 cu. ft. residential refrigerator with 1800W inverter
 GE Profile Series 30 in. residential convection microwave with built in air fryer
 GE Profile Series residential 24 in. range (3.7 cu. ft. with 9100 BTU high output burner)
 High gloss gel coated sidewalls
 JAYCOMMAND® Smart RV System
 LED fireplace with electric space heater
 MORryde® StepAbove™ entrance steps (main entrance) with strut assist
 Oversized multi-battery compartment (industry leading room for 4-6 batteries)
 Powered 50-amp cord reel
 Residential solid-surface kitchen countertop
 Residential walk-in shower with shampoo/soap holder, teak seat and shower tower
 Solid hardwood cabinet doors, stiles, and fascia
 Under-sink dishwasher
 Washer/dryer prep

OPTIONS

20 cu. ft. 12V refrigerator
 3rd 15,000 BTU ducted A/C
 5,500W Onan® Microquiet generator
 7K hydraulic disc brake package (ABS N/A with disc brakes)
 8K hydraulic disc brake package (ABS N/A with disc brakes)
 Butler's pantry (in place of half bath 38FLGS)
 Frameless dual-pane tinted safety-glass windows
 Front wardrobe in place of front windshield and sofa lounge (36SSWS)
 Full body paint- Midnight Gold, Silver Metallic, Midnight Charcoal
 Generator prep
 MORryde independent suspension and shocks with 8K axles and disc brakes (ABS not available)
 Outside Halo griddle for JayPort system or outside kitchens includes LP quick connect (select models)
 Overlander 2 Solar Package: 30-amp controller, (1) 1800W inverter and (2) 200W solar panels
 Overlander 4 Solar Package: (4) 200W solar panels, (2) 100-amp/hour lithium heated batteries, 60-amp controller, 3000W inverter, DC/DC power converter, soft start power save main 15K A/C, soft start power save for bedroom 15K A/C, battery monitor, energy management system, roof pre-wire for additional solar panels, generator prep capable and heavy gauge steel battery enclosure
 Overlander EXT Solar Package: 3,000W inverter/charger with internal 50-amp transfer switch, energy management system, (6) solar panels with 200W each, (6) 100-amp/hour lithium heated batteries, 12V DC A/C in bedroom, DC to DC battery charger, 100-amp MPPT controller management, generator prep capable
 Queen residential foam-top mattress
 Slideout awning(s) (quantity varies by model)
 True interior design choice (Modern Farmhouse or Vintage Farmhouse)
 Truma on-demand hot water system
 Wireless backup/side view/front entry door observation kit with 7 in. monitor

The 5-Star Handling Package (MANDATORY) is a Jayco exclusive, a powerful blend of high-end American-made components that make pulling a luxury fifth wheel a breeze.



DEXTER® AXLES WITH ABS & TOW ASSIST - INCLUDES NEV-R-ADJUST® BRAKES & E-Z LUBE® HUBS

The Benchmark of the trailer industry!



MORryde® PIN BOX

Allows pin box to travel forward and backward as well as side-to-side, creating a smoother tow.



DEXTER® HEAVY-DUTY 1/2" SHACKLES WITH WET BOLT FASTENERS AND BRONZE BUSHINGS

Resists the wear-and-tear of towing.



MORryde® RUBBERIZED SUSPENSION SYSTEM

Better absorbs and isolates road shock.



UNIROYAL® TIRES

17.5 in. 16-ply 'H' Rated

*Indicates split tanks

FLOORPLAN	TOTAL EXTERIOR LENGTH	EXTERIOR WIDTH	EXTERIOR HEIGHT (WITH A/C)	INTERIOR HEIGHT (MAIN)	INTERIOR HEIGHT (UPPER DECK)	UNLOADED VEHICLE WEIGHT	DRY HITCH WEIGHT	GVWR	CARGO CARRYING CAPACITY	FRESH WATER CAPACITY (INCLUDING WATER HEATER)	GRAY WASTE WATER CAPACITY	BLACK WASTE WATER CAPACITY	SLEEPING CAPACITY
32RLTS	36' 4"	8' 6"	13' 3"	8' 6"	6' 8"	13,530	2,485	16,600	3,070	75	50	87*	2-4
36FBTS	40' 6"	8' 6"	13' 4"	8' 6"	6' 8"	14,240	2,540	17,500	3,260	75	87*	87*	2-5
37MDQS	41' 8"	8' 6"	13' 3"	8' 6"	6' 8"	15,315	3,100	18,400	3,085	75	87*	50	4-6
38FBRK	43' 10"	8' 6"	13' 5"	8' 6"	6' 7"	15,330	2,975	18,200	2,870	75	87*	50	4-6
38FLGS	44' 5"	8' 6"	13' 5"	8' 6"	6' 6"	15,455	2,900	18,500	3,045	75	87*	87*	4-6
38KPTS	41' 0"	8' 6"	13' 4"	8' 6"	6' 6"	14,535	2,870	17,700	3,165	75	87*	50	2-4
38SSWS	43' 1"	8' 6"	13' 4"	8' 6"	6' 6"	15,290	3,370	18,700	3,410	75	87*	50	2-4

Meet your Jayco Dealer



Scan QR code for specification definitions



Some specs at the time of print may include estimates. For the most updated information, please visit Jayco.com

Jayco, Inc. | P.O. Box 460 | Middlebury, IN 46540

See dealer for further information and prices. All information in this brochure and on www.jayco.com is the latest available at the time of publication approval. Jayco reserves the right to make changes and to discontinue models without notice or obligation. Photography may show optional equipment or props used for decoration purposes only. RVs built for sale in Canada may differ to conform to Canadian codes. JAYCO and the JAYCO BIRD IN FLIGHT are registered trademarks of Jayco, Inc. Printed in USA 11/24 ©2024 Jayco, Inc. 2032077

Jayco - Part of Jayco Family of Companies