



# COACHMEN CATALINA

2025 PRODUCT OFFERING



[COACHMENRV.COM/CATALINA](https://coachmenrv.com/catalina)

**LEGACY EDITION**

**243 RBS**

DRY WEIGHT: **5,588**  
EXT. LENGTH: **28' 9"**



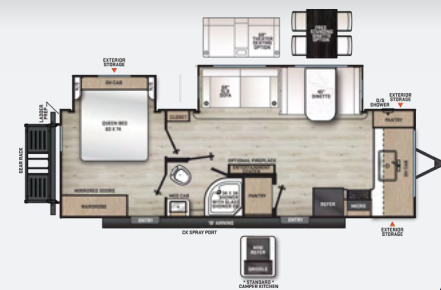
**263 BHSC**

DRY WEIGHT: **6,532**  
EXT. LENGTH: **32' 9"**



**263 FKDS**

DRY WEIGHT: **6,869**  
EXT. LENGTH: **30' 0"**



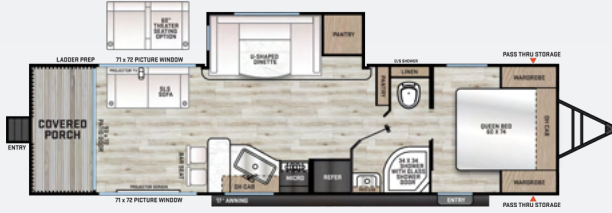
**283 RKS**

DRY WEIGHT: **6,635**  
EXT. LENGTH: **33' 8"**



**NEW 283 EPIC**

DRY WEIGHT: **7,405** EXT. LENGTH: **35' 6"**



**293 QBCK**

DRY WEIGHT: **6,883**  
EXT. LENGTH: **34' 2"**



**293 TQBSC**

DRY WEIGHT: **7,521** EXT. LENGTH: **36' 0"**



**303 RKDS**

DRY WEIGHT: **8,042** EXT. LENGTH: **36' 11"**



**323 BHDSCK**

DRY WEIGHT: **7,864**  
EXT. LENGTH: **36' 8"**



**313 RLTS**

DRY WEIGHT: **8,375** EXT. LENGTH: **36' 5"**



**NEW 323 MAZE**

DRY WEIGHT: **TBD** EXT. LENGTH: **TBD**



Other seating options available - see website for details.



**LEGACY EDITION**

**343 BHTS**

DRY WEIGHT: **8,620**  
EXT. LENGTH: **38' 4"**



**343 BHTS (2Q) OR (DEN)**

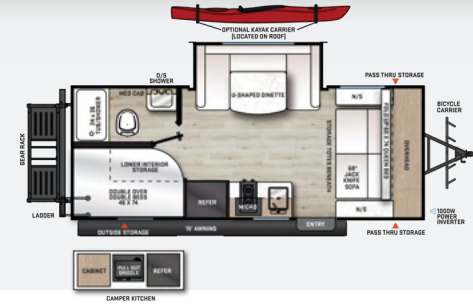
DRY WEIGHT: **8,476**  
EXT. LENGTH: **38' 6"**



**EXPEDITION**

**192 BHS**

DRY WEIGHT: **4,595**  
EXT. LENGTH: **23' 6"**



**TRAILBLAZER**

**NEW 18 TH**

DRY WEIGHT: **4,950**  
EXT. LENGTH: **25' 4"**



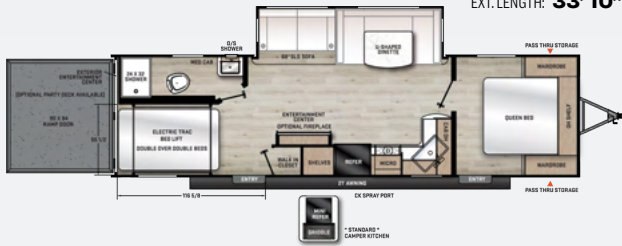
**26 TH**

DRY WEIGHT: **5,486**  
EXT. LENGTH: **29' 10"**



**27 THS**

DRY WEIGHT: **7,471**  
EXT. LENGTH: **33' 10"**



**28 THS**

DRY WEIGHT: **7,226**  
EXT. LENGTH: **33' 10"**



**29 THS**

DRY WEIGHT: **7,082**  
EXT. LENGTH: **35' 8"**



**DESTINATION**

**NEW 42 CONDO**

DRY WEIGHT: **12,715**  
EXT. LENGTH: **45' 5"**



**NEW 35 FME**

DRY WEIGHT: **TBD** EXT. LENGTH: **TBD**



**18 RDL**

DRY WEIGHT: **8,324**  
EXT. LENGTH: **32' 1"**



**DESTINATION**

**39 MKTS**

DRY WEIGHT: **9,409**  
EXT. LENGTH: **40' 11"**



**40 BHTS**

DRY WEIGHT: **9,669**  
EXT. LENGTH: **40' 11"**



**40 BHTS(2Q) OR (DEN)**

DRY WEIGHT: **9,669**  
EXT. LENGTH: **40' 11"**



**SUMMIT 7**

**NEW 134 BXH**

DRY WEIGHT: **2,723**  
EXT. LENGTH: **16' 0"**



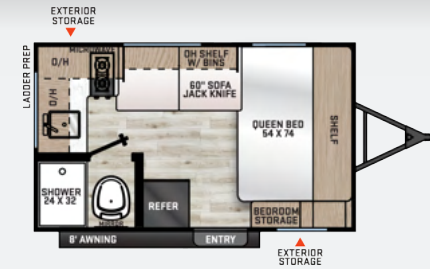
**NEW 134 RDX**

DRY WEIGHT: **2,729**  
EXT. LENGTH: **16' 0"**



**NEW 134 RKX**

DRY WEIGHT: **2,707**  
EXT. LENGTH: **16' 0"**



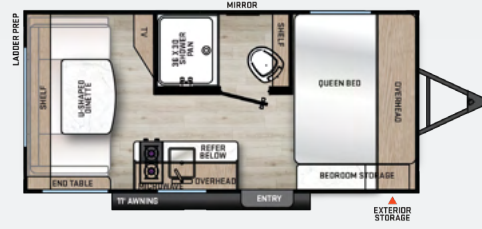
**154 RBX**

DRY WEIGHT: **3,069**  
EXT. LENGTH: **19' 6"**



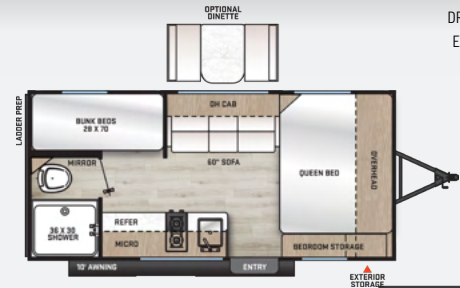
**154 RDX**

DRY WEIGHT: **3,015**  
EXT. LENGTH: **19' 6"**



**164 BHX**

DRY WEIGHT: **2,969**  
EXT. LENGTH: **19' 6"**



**NEW 184 BHSX**

DRY WEIGHT: **3,989**  
EXT. LENGTH: **23' 1"**



**184 BHS**

DRY WEIGHT: **4,202**  
EXT. LENGTH: **23' 1"**



**NEW 184 MKS**

DRY WEIGHT: **TBD**  
EXT. LENGTH: **TBD**



**184 RBS**

DRY WEIGHT: **4,526**  
EXT. LENGTH: **23' 6"**

Labels: LADDER PREP, 38 X 38 SHOWER, OH CAB, REFER, MICRO, DINETTE, TV MOUNT, OH CAB, OH CAB & ENT CENTER, ENTRY, EXTERIOR STORAGE, PASS THRU STORAGE, OH BENCH, WARDROBE.

STANDARD CAMPER KITCHEN

**NEW 211BH**

DRY WEIGHT: **4,585**  
EXT. LENGTH: **25' 11"**

Labels: MIRROR, PASS THRU STORAGE, WARDROBE, OH BENCH, OH CAB, REFER, MICRO, OH CAB, LOWER INTERIOR STORAGE, DOUBLE OVER DOUBLE BENCH, TV MOUNT, OH CAB, ENTRY, PASS THRU STORAGE, OUTSIDE STORAGE, 10' AWNING, 38 X 38 SHOWER, 48 X 36 SEATING, PANTRY.

**NEW 221EPIC**

DRY WEIGHT: **4,627**  
EXT. LENGTH: **25' 11"**

Labels: LADDER PREP, OH CAB, REFER, MIRROR, PASS THRU STORAGE, WARDROBE, OH BENCH, OH CAB, REFER, MICRO, OH CAB, BAR SEATS, BAR TOP, TV CENTER, TV HOODS, 38 X 38 SHOWER, ENTRY, PASS THRU STORAGE, 10' AWNING, WARDROBE.

OPTIONAL DINETTE

**221MKE**

DRY WEIGHT: **5,341**  
EXT. LENGTH: **25' 11"**

Labels: LADDER PREP, MICRO, OH CAB, REFER, PASS THRU STORAGE, WARDROBE, OH BENCH, OH CAB, REFER, MICRO, OH CAB, 38 X 38 SHOWER, MIRROR, LINEN, DINETTE, TV MOUNT, OH CAB, ENTRY, EXTERIOR STORAGE, PASS THRU STORAGE, 10' AWNING.

**231MKS**

DRY WEIGHT: **5,101**  
EXT. LENGTH: **28' 2"**

Labels: LADDER PREP, OH CAB, REFER, MIRROR, PASS THRU STORAGE, WARDROBE, OH BENCH, OH CAB, REFER, MICRO, OH CAB, 38 X 38 SHOWER, MIRROR, OH CAB, U-SHAPED DINETTE, TV MOUNT, OH CAB, ENTRY, EXTERIOR STORAGE, PASS THRU STORAGE, 10' AWNING.

**261BH**

DRY WEIGHT: **4,822** EXT. LENGTH: **30' 1"**

Labels: LADDER PREP, MIRROR, REFER, MICRO, OH CAB, PASS THRU STORAGE, WARDROBE, OH BENCH, OH CAB, REFER, MICRO, OH CAB, 38 X 38 SHOWER, MIRROR, OH CAB, U-SHAPED DINETTE, TV MOUNT, OH CAB, ENTRY, EXTERIOR STORAGE, PASS THRU STORAGE, 10' AWNING.

**261BHS**

DRY WEIGHT: **5,541**  
EXT. LENGTH: **30' 5"**

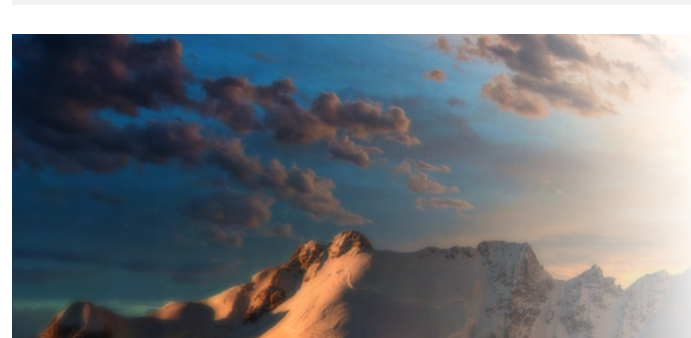
Labels: LADDER PREP, MIRROR, REFER, MICRO, OH CAB, PASS THRU STORAGE, WARDROBE, OH BENCH, OH CAB, REFER, MICRO, OH CAB, 38 X 38 SHOWER, MIRROR, OH CAB, U-SHAPED DINETTE, TV MOUNT, OH CAB, ENTRY, EXTERIOR STORAGE, PASS THRU STORAGE, 10' AWNING.

OPTIONAL CAMPER KITCHEN

**271DBS**

DRY WEIGHT: **6,299**  
EXT. LENGTH: **33' 5"**

Labels: LADDER PREP, EXTERIOR STORAGE, OH CAB, REFER, MIRROR, PASS THRU STORAGE, WARDROBE, OH BENCH, OH CAB, REFER, MICRO, OH CAB, 38 X 38 SHOWER, MIRROR, OH CAB, U-SHAPED DINETTE, TV MOUNT, OH CAB, ENTRY, EXTERIOR STORAGE, PASS THRU STORAGE, 10' AWNING.



LEGACY EDITION 

SUMMIT SERIES 

EXPEDITION   
 CATALINA

DESTINATION SERIES 

TRAIL BLAZER



# COACHMEN CATALINA

EXPERIENCE THE DIFFERENCE



SUMMIT 8  
SUMMIT SERIES 



TRAIL BLAZER  
LEGACY EDITION 

## REDEFINING THE POSSIBILITIES

AUTOMATIC LEVELING SYSTEM OR POWER STAB JACK PKG OPTIONAL UPGRADES

ASK ABOUT LIMITED PROMOTIONS







211 BH



134 RKX



134 BHX

## GE KITCHEN APPLIANCE SUITE

**ALSO INCLUDES:**  
GE A/C WITH HEAT PUMP  
GE WATER HEATER

GE REFRIGERATOR NOT AVAILABLE ON 134 MODELS AND 154 RDX

GE LOW PROFILE HIGH-EFFICIENCY RV AC



**SUPERIOR COOLING  
PERFORMANCE**



**HEAT PUMP WITH  
OPERATION AS  
LOW AS 25°F**



**ASK YOUR LOCAL DEALER OR  
SEE OUR WEBSITE FOR OUR  
IN DEPTH STANDARD AND  
OPTIONAL FEATURE DETAILS**

**CHECK OUR NXG FRAMES BY NORCO  
AND THE PREMIUM JBL AUDIO SYSTEM.**

## NOTES



### 24/7 EMERGENCY ROADSIDE ASSISTANCE WITH VEHICLE PURCHASE\*

TOWING  
JUMP-STARTS  
TIRE CHANGES  
FLUID DELIVERY  
LOCKOUT  
SERVICE

WINCH-OUT  
MOBILE MECHANIC  
TECHNICAL  
SUPPORT  
DEALER LOCATOR  
SERVICES



\*VALID FOR 1 YEAR FROM DATE OF PURCHASE



### PRE-DELIVERY INSPECTION FACILITY

20,000 square feet of quality assurance. The bare essentials for a premium product. This state-of-the-art facility gives immediate daily feedback to production for quality assurance in every unit built.

**FREE MEMBERSHIP**  
to Forest River Owners' Group  
[www.forestriverfrog.com](http://www.forestriverfrog.com)



[www.coachmenrv.com/catalina](http://www.coachmenrv.com/catalina)

**Specification Definitions :: GVWR (Gross Vehicle Weight Rating)** - is the maximum permissible weight of the unit when fully loaded. It includes all weights, inclusive of all fluids, cargo, optional equipment and accessories. For safety and product performance do NOT exceed the GVWR. // **GAWR (Gross Axle Weight Rating)** - is the maximum permissible weight, including cargo, fluids, optional equipment and accessories that can be safely supported by a combination of all axles. // **UVW (Unloaded Vehicle Weight)** - is the typical weight of the unit as manufactured at the factory. It includes all weight at the unit's axle(s) and tongue or pin and LP Gas. The UVW does not include cargo, fresh potable water, additional optional equipment or dealer installed accessories. \*Estimated average based on standard build optional equipment. // **CCC (Cargo Carrying Capacity)\*\*** - is the amount of weight available for fresh potable water, cargo, additional optional equipment and accessories. CCC is equal to GVWR minus UVW. Available CCC should accommodate fresh potable water (8.3 lbs per gallon). Before filling the fresh water tank, empty the black and gray tanks to provide for more cargo capacity. \*\* Estimated average based on standard build optional equipment // Each Forest River RV is weighed at the manufacturing facility prior to shipping. A label identifying the unloaded vehicle weight of the actual unit and the cargo carrying capacity is applied to every Forest River RV prior to leaving our facilities. The load capacity of your unit is designated by weight, not by volume, so you cannot necessarily use all available space when loading your unit. // All information contained in this brochure is believed to be accurate at the time of publication. However, during the model year, it may be necessary to make revisions and Forest River, Inc., reserves the right to make all such changes without notice, including prices, colors, materials, equipment and specifications as well as the addition of new models and the discontinuance of models shown in this brochure. Therefore, please consult with your Forest River dealer and confirm the existence of any materials, design or specifications that are material to your purchase decision. Litho. U.S.A. FOR 2709 P&W: 2024.12.13