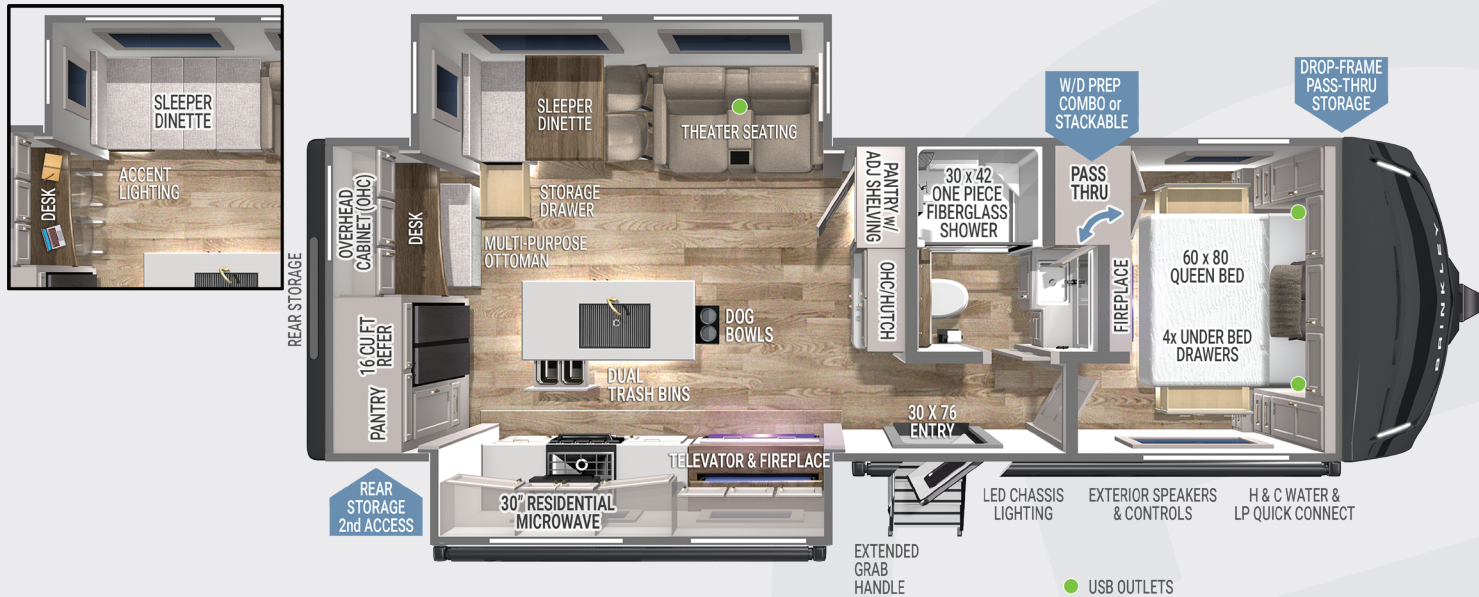


MODEL Z AIR 285

AVAILABLE SUMMER 2024



SPECIFICATIONS:

- UVW – TBD
- GVWR – 11,495 lbs.
- Hitch Weight – TBD
- Exterior Length – 33' 11"
- Overall Height w/ AC – 11' 7"
- Width – 96"
- Interior Height - 84"
- Slide Height - 72.5"
- Wheels & Tires – 16" E-Rated
- Fresh Water Capacity – 62 gal
- Gray Water Capacity – 112 gal
- Black Water Capacity – 40 gal
- Insulation – Floors R40, Walls R9, Ceiling R40

FEATURES:

- Sleeper Dinette w/ Storage Drawer
- Desk w/ Overhead Cabinet Storage
- Solid Surface Countertops
- Brinkley CraftSense™ Wood Trim Construction
- Premium Residential Cabinets & Drawers w/ Dovetail Joints
- Kitchen & Living Room/Dining Room Flush Floor Slides
- 18k Variable Speed Main AC, 13.5K 2nd AC
- Dual Pull-Out Trash Bins
- Large Pantry w/ Adjustable Shelves & Appliance Outlet
- Removable Pet Bowls w/ Storage Compartment
- 5,000 BTU Electric Fireplace in Bedroom
- Built-In Bedside Storage & Outlets w/ USB & USB-C

- Queen Bed w/ Residential 8" Memory Foam Mattress (60"x80") & Under-Bed Storage Drawers
- One-Piece Fiberglass Shower
- Square Euro Frameless Windows w/ 6" Openings
- Integrated Window Screens & Insulated Blackout Blinds (No Valances)
- Brinkley Automotive-Grade Sealant Package
- Automotive Grade Front Cap, Lights, & Lens
- Sleek Styling w/ Automotive-Grade Exterior Graphics
- 2 - Hot/Cold Outdoor Showers (BOTH sides of coach)
- Tankless On-Demand Water Heater
- Heated Enclosed Underbelly (Circulated)
- Custom LP Box w/ Battery Storage
- One Touch Automatic Leveling System

- Drop Frame Chassis w/ Over 100 Cubic Feet of Exterior Storage (Accessible Campside) w/ Motion Lighting & Power Outlets
- Premium Utility Center w/ Retractable 65' Water Hose
- Industry First Brass Plumbing Connections
- Industry First Low Maintenance Roof
- Heated Tanks w/ Electric Waste Valves w/ Manual-Override
- Heavy-Duty 5,600 lbs. Axles w/ E-Rated Goodyear Tires & 16" Aluminum Custom Wheels
- 370W Solar Panel w/ 60AMP MPPT Controller (Inverter Prep & Lithium Ready)

FACTORY OPTIONS:

- Dual Pane Windows \$1,731

022724

