

T  
R  
A  
V  
E  
L  
  
T  
R  
A  
I  
L  
E  
R  
S

PROUDLY  
*Millersburg Made*  
SINCE 1974



**ROCKWOOD**  
BY FOREST RIVER

# MINI LITE FLOORPLANS

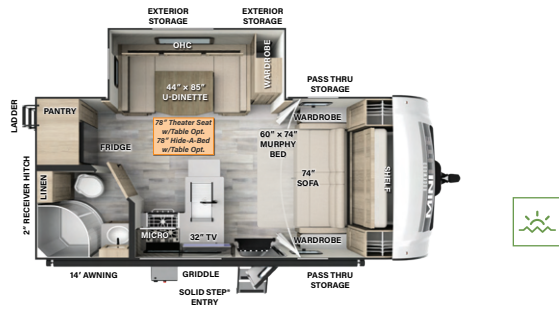


## POWER PACKAGE

### Includes:\*

- 460Ah Lithium-Ion Battery
- 3kW Inverter-charger
- 5" Touchscreen
- 160A Charge Capacity
- (5) 200W GoPower® Solar Panels
- Integrated 60A MPPT Charge Controller
- Centralized System Disconnect Switch
- 13,500 BTU A/C w/Soft Start Technology

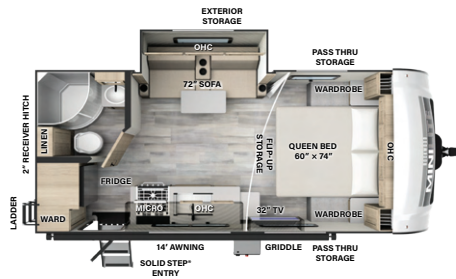
\*Power Package available in Select Mini Lite Models Only. Look for the  Icon Next to the Floorplan.



## 2104S

LENGTH: 22' 4" WIDTH: 8' HEIGHT: 10' 11" HITCH: 681 AXLE: 4237

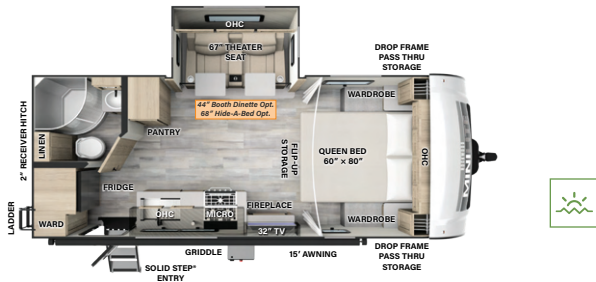
UWV: 4977 CCC: 1864 **F** 54 GAL **G** 30 GAL **B** 30 GAL



## 2109S

LENGTH: 22' 4" WIDTH: 8' HEIGHT: 10' 3" HITCH: 557 AXLE: 3877

UWV: 4493 CCC: 1344 **F** 54 GAL **G** 30 GAL **B** 30 GAL



## 2205S

LENGTH: 23' 10" WIDTH: 8' HEIGHT: 10' 11" HITCH: 634 AXLE: 4439

UWV: 5132 CCC: 1662 **F** 54 GAL **G** 30 GAL **B** 30 GAL



# Construction

## SUPERIOR CONSTRUCTION

1. Complete **Composite** Wall Construction
2. Fully Laminated Walkable Roof
3. 6-Sided Full-Aluminum Frame
4. Aluminum Truss Roof Bracing
5. 5/8" Tongue & Groove Plywood Floor
6. Aluminum Floor Joists
7. Frameless Windows
8. Painted Fiberglass Front Cap w/Clear Coat<sup>1</sup>
9. Automotive Glass Windshield

## STANDARD FEATURES

10. 200W Solar Panel with 1800W Inverter & 30 AMP Charge Controller
11. Back-Up Camera Prep
12. Maxxair Fan with Cover
13. Winegard Air 360+ Prepped for Wi-Fi
14. Key-Alike Lock System
15. Slam Baggage Doors
16. Sport Tire and Wheel Package
17. PSX2 Power Stabilizers<sup>2</sup>
18. Additional Solar Prep
19. Double Battery Boxes
20. Double 30 Lb. LP Tanks

## SAFETY STANDARDS

21. Nitrogen-Filled Goodyear Endurance Tires w/ TST Tire Pressure Monitor System
22. Dexter® Torflex® Axles
23. MORryde Strut Assist Steps<sup>3</sup>

## CLIMATE PROTECTION PACKAGE

24. 12V Thermostat-Controlled Heated Tanks
25. Radiant Foil In Front Cap

## Optional Features

26. Power Package (N/A 2109S, 2506S, 2516S)<sup>4</sup>
27. Additional 200W Solar Panel

<sup>1</sup> Ultra Lite Only; Mini Lite comes with a fiberglass front cap. <sup>2</sup> Ultra Lite Only; Optional on Mini Lite.  
<sup>3</sup> N/A Mini Lite 2109S <sup>4</sup> Mini Lite Only.

# Slide Options

Model	Theater Seat	Hide-A-Bed	Table & Chairs	Booth Dinette	King Bed
Mini Lite Travel Trailers					
2104S	✓	✓		Standard U-Dinette	
2109S					
2205S	Standard	✓		✓	
2506S	✓	✓		Standard U-Dinette	
2509S	✓	✓		Standard U-Dinette	
2511S	Standard	✓		✓	
2513S	Standard	✓		✓	
2515S	Standard	✓		Standard	
2516S	Standard	✓			
2517S	✓	✓		Standard	
2518S	Standard	✓			
Ultra Lite Travel Trailers					
2606WS	Standard	✓	✓	Standard	
2608BS	Standard	✓	✓	Standard	
2614BS	Standard	✓	✓	Standard	
2616BH	Standard	✓			
2706WS	Standard	✓	✓	Standard U-Dinette	
2720IK	Standard	✓	✓	Standard	✓
2906BS	Standard	Standard	✓	Standard	✓
2908RL	Standard	Standard			
2911BS	Standard	✓	✓	Standard U-Dinette	

# ROCKWOOD MINILITE ULTRA LITE

Rockwood's Mini Lite and Ultra Lite provide one of the best values in the lightweight travel trailer market. Both models are built with superior build quality that exceed Rockwood's reputation.



## Customer Assurance Inspection (CAI)

CAI is our offline PDI facility where all units are run through rigorous testing protocols to ensure Rockwood's quality standards are exceeded. We strive to provide a quality RV we're proud of and would camp in ourselves.

In 2023, our CAI facility moved to a new 16,950 FT<sup>2</sup> location in Millersburg to combine Quality, Engineering, Design, and Marketing in one location.

## WeRV App Control

Your RV is equipped with Lippert™ One Control®. This WiFi app-based interface provides comfort and convenience to control and monitor your RV's functions. Visit [lippert.com/onecontrol](http://lippert.com/onecontrol) for a complete list of capabilities.



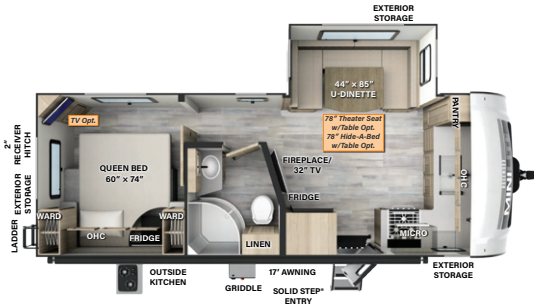
Download Today!



Apple and App Store are registered trademarks of Apple Inc. Google Play and the Google Play logo are trademarks of Google LLC.

# ROCKWOOD

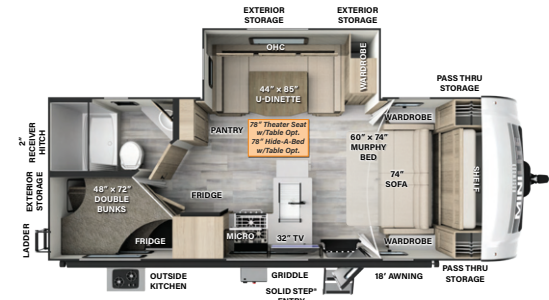
## MINI LITE FLOORPLANS



**2506S**

LENGTH: 25' 11" WIDTH: 8' HEIGHT: 10' 11" HITCH: 724 AXLE: 4768

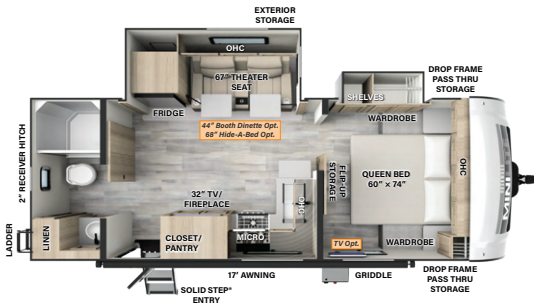
UWV: 5551 CCC: 1333 **F** 54 GAL **G** 60 GAL **B** 30 GAL



**2509S**

LENGTH: 25' 11" WIDTH: 8' HEIGHT: 10' 11" HITCH: 773 AXLE: 4667

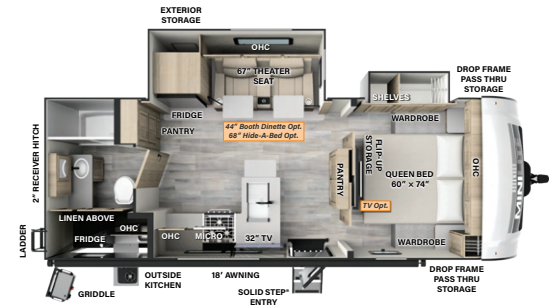
UWV: 5499 CCC: 1434 **F** 54 GAL **G** 30 GAL **B** 30 GAL



**2511S**

LENGTH: 25' 10" WIDTH: 8' HEIGHT: 10' 11" HITCH: 697 AXLE: 5000

UWV: 5756 CCC: 1941 **F** 54 GAL **G** 60 GAL **B** 30 GAL



**2513S**

LENGTH: 25' 10" WIDTH: 8' HEIGHT: 10' 11" HITCH: 660 AXLE: 5252

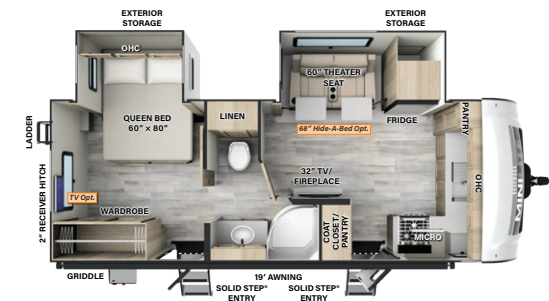
UWV: 5971 CCC: 1689 **F** 54 GAL **G** 30 GAL **B** 30 GAL



**NEW!**  
**2515S**

LENGTH: 25' 10" WIDTH: 8' HEIGHT: 10' 11" HITCH: 681 AXLE: 5112

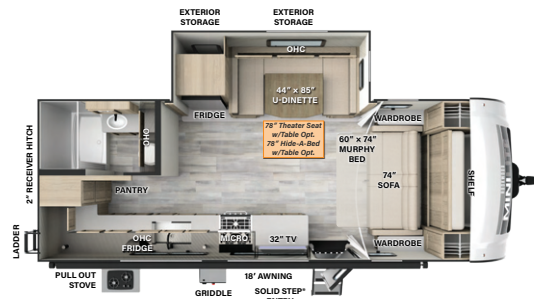
UWV: 5852 CCC: 1829 **F** 54 GAL **G** 60 GAL **B** 30 GAL



**2516S**

LENGTH: 25' 11" WIDTH: 8' HEIGHT: 10' 11" HITCH: 778 AXLE: 5340

UWV: 6177 CCC: 1601 **F** 54 GAL **G** 60 GAL **B** 30 GAL



**NEW!**  
**2517S**

LENGTH: 25' 11" WIDTH: 8' HEIGHT: 10' 11" HITCH: 615 AXLE: 5100

UWV: 5774 CCC: 1841 **F** 54 GAL **G** 60 GAL **B** 30 GAL



**NEW!**  
**2518S**

LENGTH: 25' 10" WIDTH: 8' HEIGHT: 10' 11" HITCH: 645 AXLE: 4915

UWV: 5619 CCC: 2026 **F** 54 GAL **G** 60 GAL **B** 30 GAL



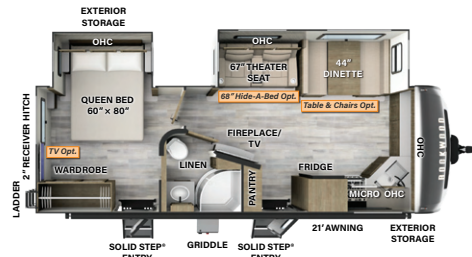
Power Package Option Available



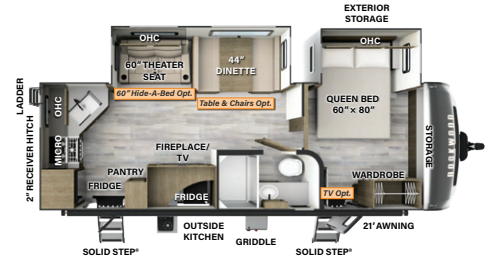
# ULTRA LITE FLOORPLANS



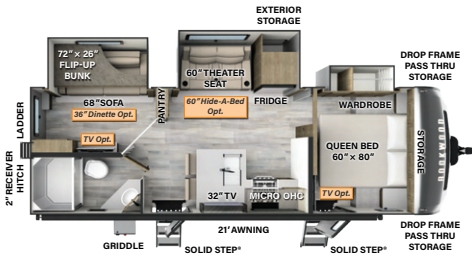
**2606WS** LENGTH: 29' 9" WIDTH: 8' HEIGHT: 11' 2" HITCH: 840 AXLE: 5742  
 UWW: 6641 CCC: 1999 **F** 54 GAL **G** 90 GAL **B** 45 GAL



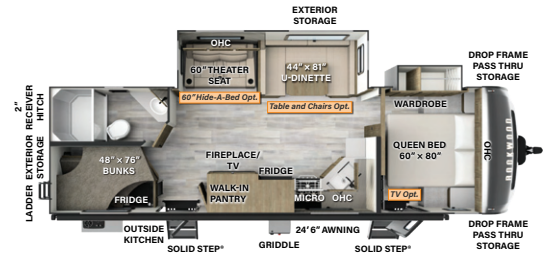
**2608BS** LENGTH: 29' 8" WIDTH: 8' HEIGHT: 11' 2" HITCH: 946 AXLE: 5831  
 UWW: 6836 CCC: 1910 **F** 54 GAL **G** 90 GAL **B** 45 GAL



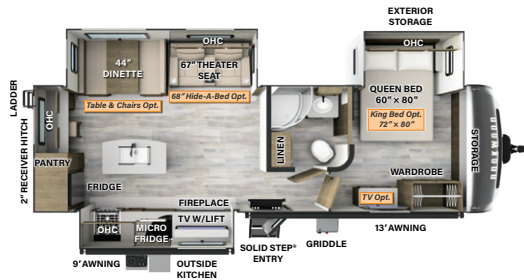
**2614BS** LENGTH: 29' 9" WIDTH: 8' HEIGHT: 11' 2" HITCH: 796 AXLE: 6133  
 UWW: 6988 CCC: 1608 **F** 54 GAL **G** 90 GAL **B** 45 GAL



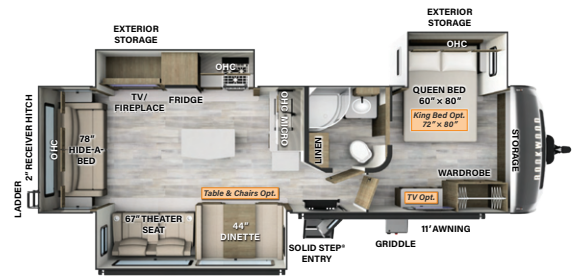
**NEW!**  
**2616BH** LENGTH: 29' 9" WIDTH: 8' HEIGHT: 11' 3" HITCH: 938 AXLE: 6137  
 UWW: 7134 CCC: 1604 **F** 54 GAL **G** 90 GAL **B** 45 GAL



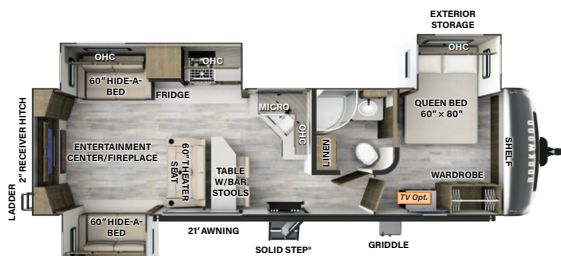
**2706WS** LENGTH: 32' 10" WIDTH: 8' HEIGHT: 11' 2" HITCH: 921 AXLE: 6330  
 UWW: 7310 CCC: 1411 **F** 54 GAL **G** 90 GAL **B** 45 GAL



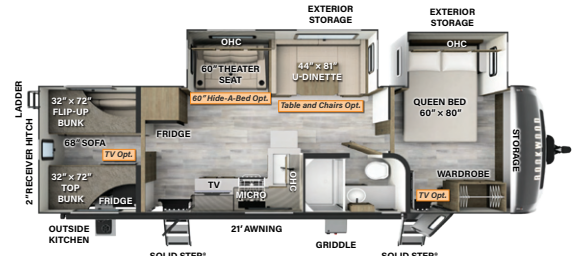
**2720IK** LENGTH: 33' 1" WIDTH: 8' HEIGHT: 11' 3" HITCH: 978 AXLE: 7114  
 UWW: 8151 CCC: 1627 **F** 54 GAL **G** 90 GAL **B** 45 GAL



**2906BS** LENGTH: 35' 5" WIDTH: 8' HEIGHT: 11' 3" HITCH: 1100 AXLE: 7400  
 UWW: 8559 CCC: 1341 **F** 54 GAL **G** 45 GAL **B** 45 GAL



**NEW!**  
**2908RL** LENGTH: 35' 5" WIDTH: 8' HEIGHT: 11' 2" HITCH: 930 AXLE: 7295  
 UWW: 8284 CCC: 1446 **F** 54 GAL **G** 45 GAL **B** 45 GAL



**2911BS** LENGTH: 35' 5" WIDTH: 8' HEIGHT: 11' 2" HITCH: 1102 AXLE: 6708  
 UWW: 7869 CCC: 2033 **F** 54 GAL **G** 45 GAL **B** 45 GAL



# Rockwood Warranty. Our Promise.

FOR DETAILS ON ROCKWOOD'S COMPLETE WARRANTY PROGRAM, SEE YOUR ROCKWOOD DEALER.

When it comes to backing products with the same quality and commitment it does when it begins the manufacturing process, the only name you have to remember when you're looking for a recreational vehicle is Rockwood. Rockwood offers the following additional limited warranties to the original purchasers. Consult written warranty for details.

**1** Limited Lifetime roofing warranty.\*

**2** Two-year fiberglass warranty.

**3** Ten-year Torflex® axle warranty.

**4** One-year bumper to bumper warranty.

\*Lifetime warranty is limited to original owner

## Specification Definitions

**GVWR (Gross Vehicle Weight Rating):** is the maximum permissible weight of the unit when fully loaded. It includes all weights, inclusive of all fluids, cargo, optional equipment and accessories. For safety and product performance do NOT exceed the GVWR.

**GAWR (Gross Axle Weight Rating):** is the maximum permissible weight, including cargo, fluids, optional equipment and accessories that can be safely supported by a combination of all axles.

**UVW (Unloaded Vehicle Weight):** is the typical weight of the unit as manufactured at the factory. It includes all weight at the unit's axle(s) and tongue or pin and LP Gas. The UVW does not include cargo, fresh potable water, additional optional equipment or dealer installed accessories.

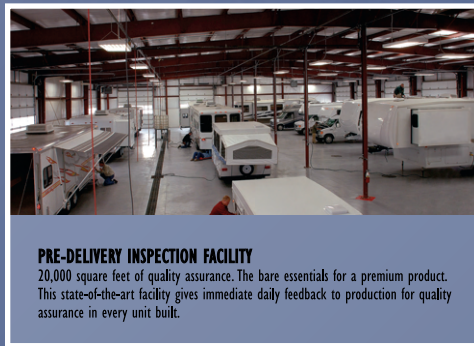
**CCC (Cargo Carrying Capacity):** is the amount of weight available for fresh potable water, cargo, additional optional equipment and accessories. CCC is equal to GVWR minus UVW. Available CCC should accommodate fresh potable water (8.3 lww per gallon). Before filling the fresh water tank, empty the black and gray tanks to provide for more cargo capacity.

Each Forest River RV is weighed at the manufacturing facility prior to shipping. A label identifying the unloaded vehicle weight of the actual unit and the cargo carrying capacity is applied to every Forest River RV prior to leaving our facilities.

The load capacity of your unit is designated by weight, not by volume, so you cannot necessarily use all available space when loading your unit.

*All information contained in this brochure is believed to be accurate at the time of publication. However, during the model year, it may be necessary to make revisions and Forest River, Inc., reserves the right to make all such changes without notice, including prices, colors, materials, equipment and specifications as well as the addition of new models and the discontinuance of models shown in this brochure. Therefore, please consult with your Forest River dealer and confirm the existence of any materials, design or specifications that are material to your purchase decision. © 2023 Rockwood RV, a Division of Forest River, Inc., a Berkshire Hathaway Company. All Rights Reserved.*

1 Estimated Average based on standard build optional equipment



**PRE-DELIVERY INSPECTION FACILITY**  
20,000 square feet of quality assurance. The bare essentials for a premium product. This state-of-the-art facility gives immediate daily feedback to production for quality assurance in every unit built.



[www.ForestRiverBuyLocal.com](http://www.ForestRiverBuyLocal.com)



RV WITH US



@RockwoodRVs



**FOREST RIVER OWNER'S GUIDE**

Now you can have your Owner's Manual with you wherever you are. Download our FREE App from the App Store or Google Play and you'll have the information right at your fingertips.



YOUR **ROCKWOOD** DEALER

**FREE MEMBERSHIP**  
to Forest River Owners' Group  
[www.forestriverfrog.com](http://www.forestriverfrog.com)



Learn More  
Scan this barcode using a QR Reader on your smart phone to learn more about Forest River.



A Berkshire Hathaway company

**ROCKWOOD**

201 WEST ELM MILLERSBURG, IN 46543  
[WWW.FORESTRIVERINC.COM/ROCKWOOD](http://WWW.FORESTRIVERINC.COM/ROCKWOOD)

574.642.2640