

FLAGSTAFF TENT CAMPERS

FLAGSTAFF

TENT CAMPERS

YOUR LIGHT-WEIGHT SPECIALIST



FLAGSTAFF

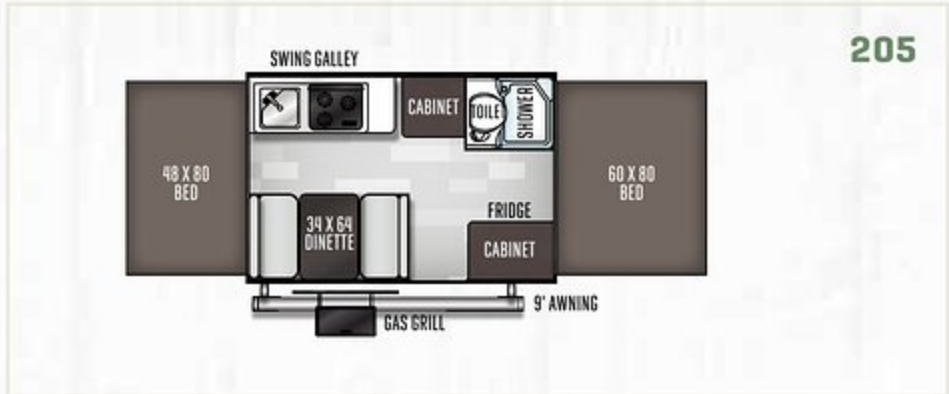
MAC

MAKING YOUR INVESTMENT GO A LONG WAY. Flagstaff takes pride in packing the most value possible into our MAC series. Finding the perfect fit for the specific needs of your active family is made easier by the wide variety of floor plans available. While each model comes standard with many features, you still have flexibility to incorporate as many options as you choose to fit your camping preferences.

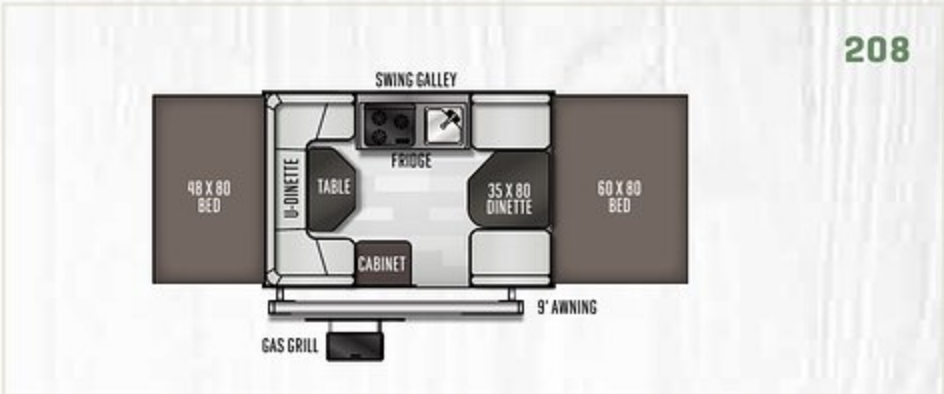
MODEL NO.

205

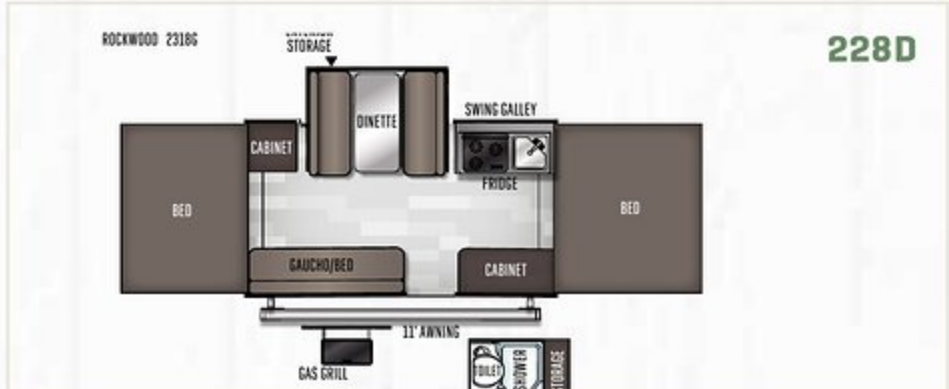




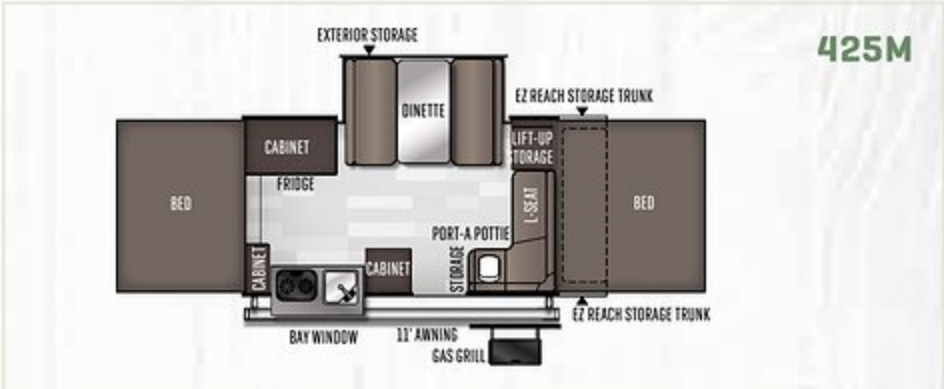
205



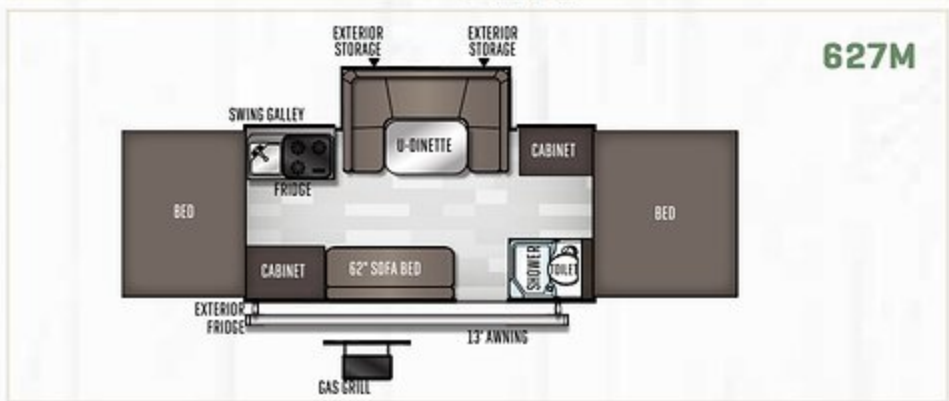
208



228D



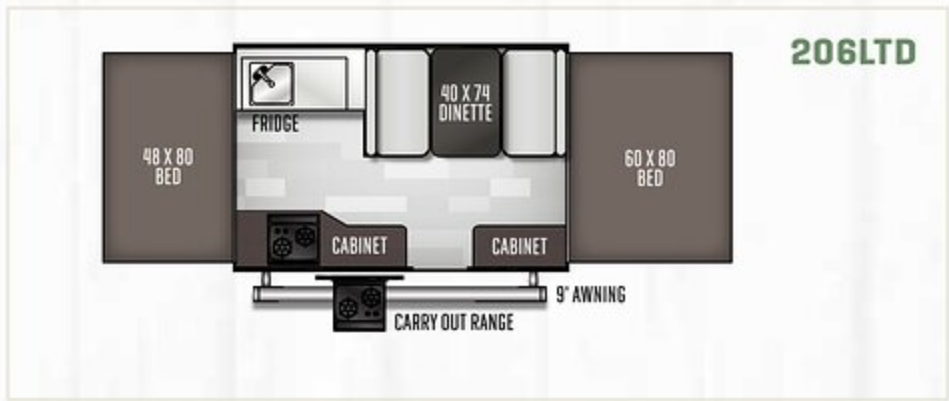
425M



627M



176LTD



206LTD

MODEL NUMBER	205	208	228D	425M	627M	176LTD	206LTD
Unloaded Vehicle Weight*	1997	1896	2439	2654	2854	1465	1608
Base Dry Hitch Weight	230	255	263	295	360	162	195
Base Dry Axle Weight	1748	1622	2157	2340	2475	1284	1394
Cargo Capacity	1233	1359	824	641	506	793	683
Box Size	10'	10'	12'	12'	14'	8'	10'
Trailer Size (Closed w/ Hitch)	15' 4"	15' 4"	17' 3"	18' 10"	19' 1"	12' 1"	14' 5"
Height (Closed)	66"	66"	66"	72"	72"	64"	64"
Trailer Length (Open)	20' 1"	20' 1"	23' 10"	23' 9"	25' 9"	17' 1"	20' 1"
Fresh Water Capacity	26	26	26	26	26	10	10

The Unloaded Vehicle Weight (UVW) listed represents the weight of one trailer with that model's standard equipment including the content of specified option packages. * See back cover for further specification definitions.

FLAGSTAFF

Sports Enthusiast Package

WELCOME TO THE FLAGSTAFF SPORTS ENTHUSIAST PACKAGE (SE), a camper designed for active couples and families. Whatever the preference; mountain biking, canoeing, paddle boarding or surfing, the SE camping trailers are designed to allow you to make the most of your outdoor experience.

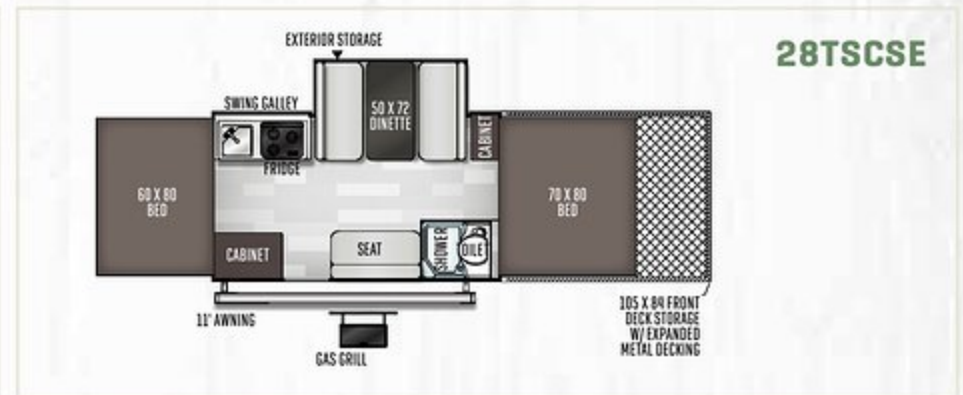
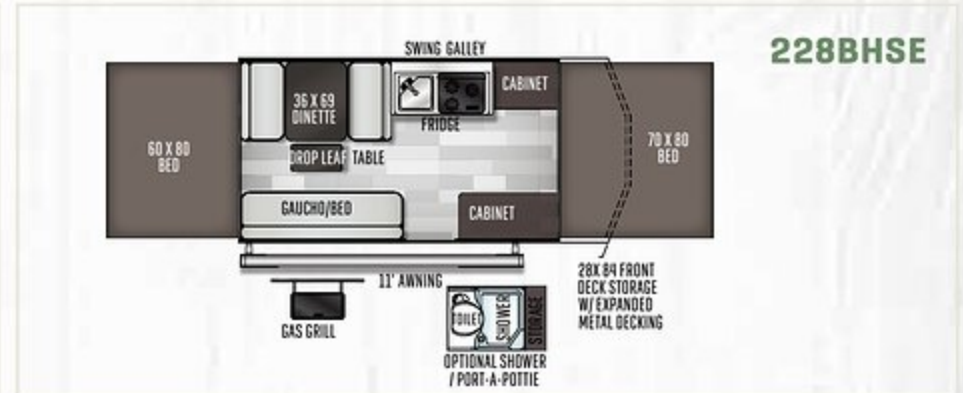
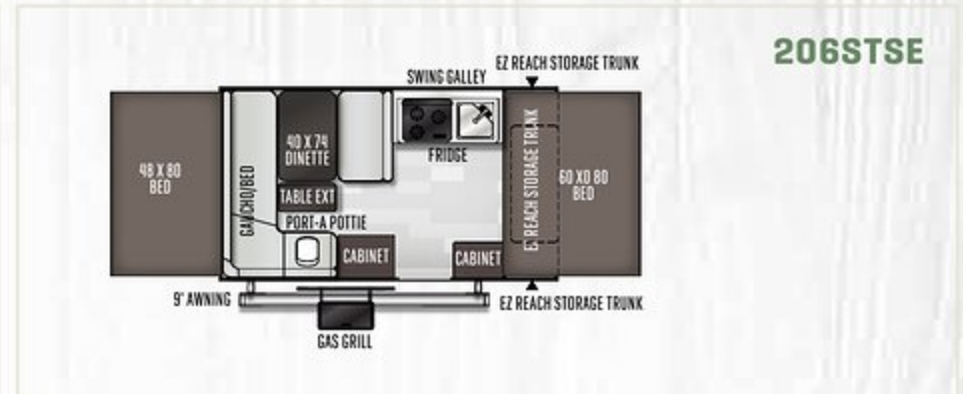
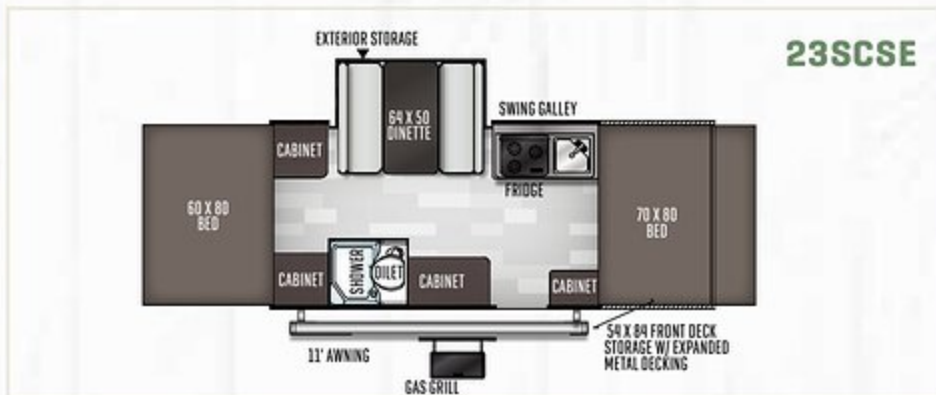
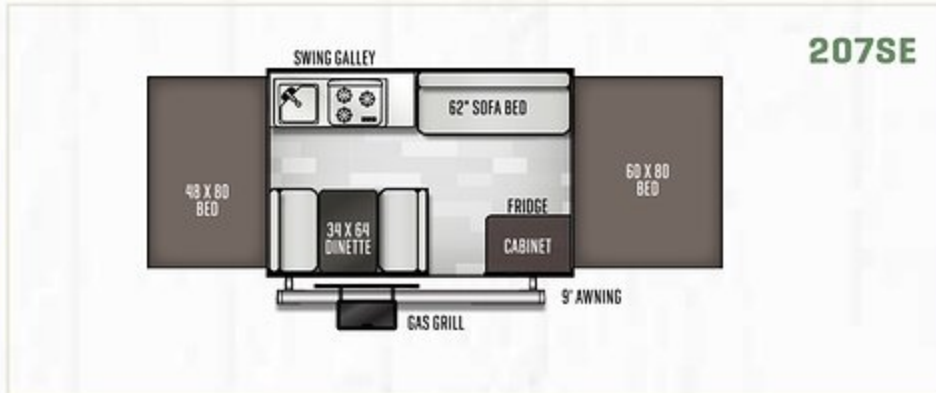
BUILT FOR 21ST CENTURY CAMPING. The SE package includes a AM/FM stereo with Bluetooth technology, a MP3 Player and USB auxiliary ports for streaming and recharging, LED lighting and a WIFI Ranger WIFI booster.

CARGO CARRYING VERSATILITY. The Flagstaff SE camper features ProRac Systems, Inc. permanent mount cross bars that provide a load-bearing surface for SE carrying up to 150 lbs. of a wide variety of outdoor sports equipment.

UNBOUNDED ADVENTURE. Distinctive fender flairs and 15" Mud Rover Radial Tires with Aluminum Wheels provides 12" of ground clearance to go anywhere. Each SE is solar power ready, making it easy to get off the grid!

MODEL NO.
207SE





MODEL NUMBER	176SE	206STSE	207SE	228BHSE	23SCSE	28TSCSE
Unloaded Vehicle Weight*	1722	2180	2076	2559	2933	3377
Base Dry Hitch Weight	178	254	234	338	294	221
Base Dry Axle Weight	1525	1907	1823	2202	2620	3118
Cargo Capacity	656	724	808	1279	861	1844
Box Size	8' 4"	10'	10'	12'	12'	12'
Trailer Size (Closed w/ Hitch)	12' 1"	17' 1"	15' 4"	19' 2"	22' 5"	26' 8"
Height (Closed)	71"	71"	71"	74"	74"	74"
Trailer Length (Open)	17' 1"	20' 4"	20' 1"	23' 10"	26' 5"	30' 8"
Fresh Water Capacity	20	20	20	26	26	26

The Unloaded Vehicle Weight (UVW) listed represents the weight of one trailer with that model's standard equipment including the content of specified option packages. * See back cover for further specification definitions.

FLAGSTAFF

High Wall

LEAVE THE CAMPGROUND BATH HOUSE BEHIND. Welcome to the Flagstaff High Wall Series. We have designed this series for the camping family who wants the refinement of larger vacationing units in a light-weight camper. Ample counterspace, upgraded appliances, fully enclosed shower and cassette toilet, convenient pull-up curtains providing a wide view of the surroundings and tasteful interiors make this camper a gorgeous option to experience.

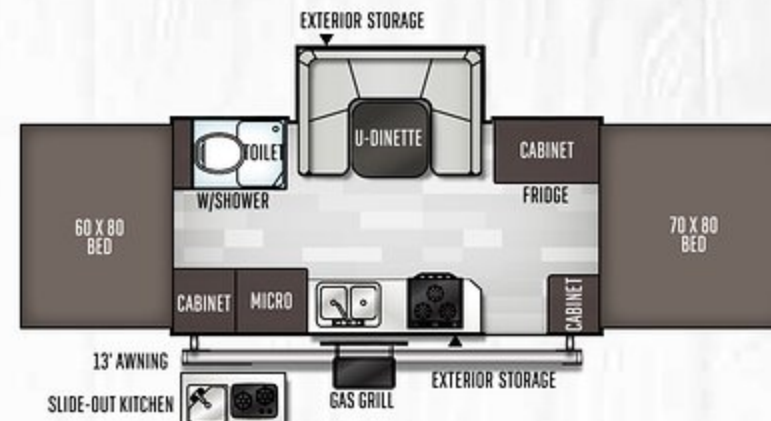
MODEL NO.

HW27KS

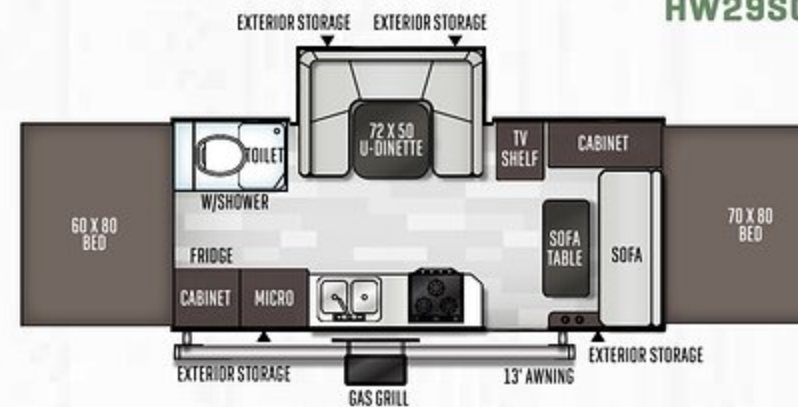




HW27KS



HW29SC



MODEL NUMBER	HW27KS	HW29SC
Unloaded Vehicle Weight*	3334	3721
Base Dry Hitch Weight	380	371
Base Dry Axle Weight	2916	3312
Cargo Capacity	546	1278
Box Size	14'	16'
Trailer Size (Closed w/ Hitch)	19' 3"	21' 3"
Height (Closed)	79"	81"
Trailer Length (Open)	25' 9"	27' 9"
Fresh Water Capacity	26	26
Grey Water Capacity	12	12
Black Water Capacity	12	12

The Unloaded Vehicle Weight (UVW) listed represents the weight of one trailer with that model's standard equipment including the content of specified option packages. * See back cover for further specification definitions.

FLAGSTAFF

Hard Side & Hard Side High Wall

VACATIONS LIKE A TRAVEL TRAILER AND STORES LIKE A CAMPER. The Hard Side camper combines a smooth, vacuum bonded fiberglass exterior with quick, easy set up, while retaining the towing and storage advantages of a tent camper. The Hard Side is the perfect product for your camping adventure.

MODEL NO.
T21DMHW





HARD SIDE HIGH WALL MODEL FEATURES

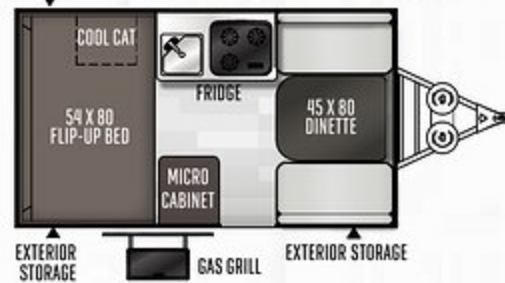
A Hard Side & Hard Side High Wall Awning & Screen Room option. (Shown on T12RBST.)

B Molded LP Bottle Covers (Std. Hard Side & Hard Side High Wall)

C Gas Strut Lift Assist (Std. Hard Side Models w/ Manual Lift Roof Only)

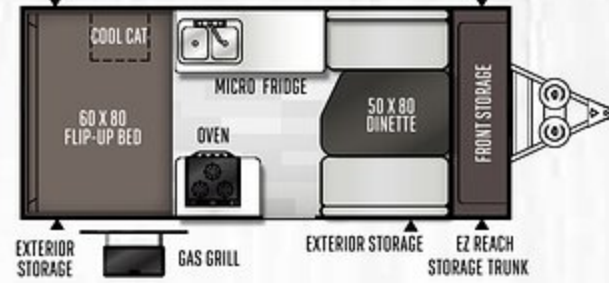
D Power Roof Lift Assist (Hard Side High Wall only)

EZ REACH STORAGE TRUNK



T12RB

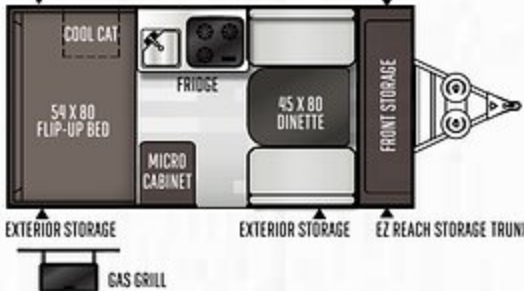
EZ REACH STORAGE TRUNK



T21QBHW

EZ REACH STORAGE TRUNK

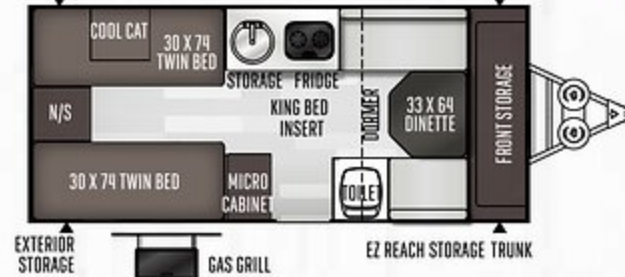
EZ REACH STORAGE TRUNK



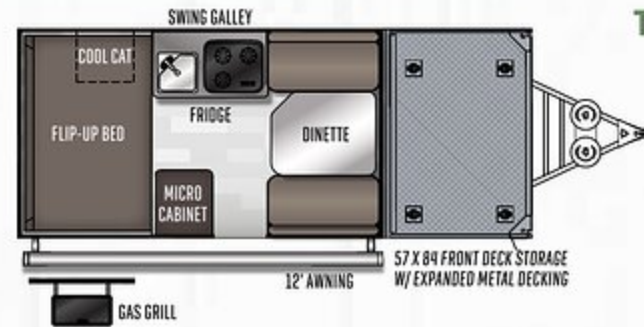
T12RBST

EZ REACH STORAGE TRUNK

EZ REACH STORAGE TRUNK



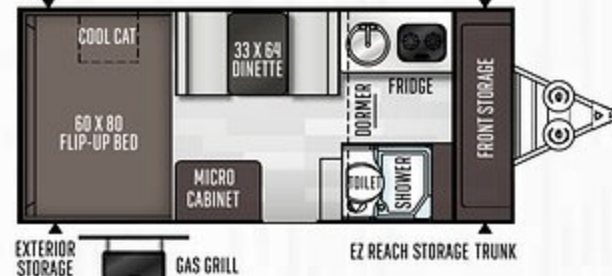
T21TBHW



T12RBTH

EZ REACH STORAGE TRUNK

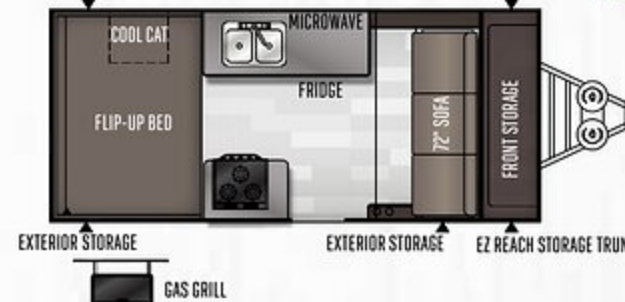
EZ REACH STORAGE TRUNK



T21DMHW

EZ REACH STORAGE TRUNK

EZ REACH STORAGE TRUNK



T21FSHW

NEW

MODEL NUMBER	T12RB	T12RBST	T12RBTH	T21QBHW	T21TBHW	T21DMHW	T21FSHW
Unloaded Vehicle Weight*	2014	2120	2392	2526	2670	2700	2648
Base Dry Hitch Weight	222	284	295	311	372	353	315
Base Dry Axle Weight	1754	1798	2075	2177	2260	2309	2295
Cargo Capacity	1208	1164	1387	785	702	653	667
Box Size	12'	12'	12'	14'	14'	14'	14'
Trailer Size (Closed w/ Hitch)	17' 1"	18' 10"	22' 1"	20' 10"	20' 10"	20' 10"	20' 10"
Height (Closed)	61"	61"	68"	67"	68"	68"	68"
Fresh Water Capacity	26	26	26	26	26	26	26

The Unloaded Vehicle Weight (UVW) listed represents the weight of one trailer with that model's standard equipment including the content of specified option packages. * See back cover for further specification definitions.



FLAGSTAFF

Superior Construction



- A** Three Stage Double Arm Lifter Posts (NA Hard Side)
- B** Fiberglass Vacuum Bonded Radius Roof w/ No Center Seam (NA Hard Side)
- C** Five-Piece Vinolon Supreme Tenting (NA Hard Side)
- D** E-Z Crank Down Stabilizer Jacks w/Sand Pads
- E** Full Perimeter Aluminum Bed Frames (NA Hard Side)
- F** Plywood Bunk Ends (NA Hard Side)
- G** Seven-Way Pigtail Wiring
- H** Under Floor 20 Gallon Fresh Water Tank (LTDs 11 Gallon Above Floor)
- I** Powder Coated Tubular Steel Frame
- J** Powder Coated Rafter Poles and Bed Bows (NA Hard Side)
- K** Air Conditioner Reinforcing Laminated Into Roof (NA Hard Side)
- L** Nitrogen Filled Steel Belted Radial Tires
- M** Easy Lube System (Except LTDs)
- N** Smooth Fiberglass Vacuum Bonded Exterior (NA on MAC & SE)
- O** One-Piece Door (Except Hard Side)
- P** Under Awning LED Lighting (Except LTD's & Hard Sides)



DEXTER TORFLEX

(Standard on , High Wall and Hard Side Models)

- Independent wheel suspension and self-damping action
- Rubber cushioning eliminates metal-to-metal contact.
- Forged torsion arm for maximum strength

Most models are also equipped with E-Z Lube® System and Nev-R-Adjust® Brakes.

FLAGSTAFF

Popular Features

JUST A FEW FEATURES THAT STAND ABOVE THE REST



- A EZ Reach Storage Trunk (Some Models)
- B Heated Mattress (Std. Opt. NA T21TBHW)
- C Swing Down Galley (Except LTDs, Hard Side, High Wall)
- D Metal Full Extension Drawer Guides (Std.)
- E Solar Panel Prep (Std. all models) The Zamp 40 amp. portable solar panel shown is sold separately.
- F Three Speed Ventilation Fan (Except LTDs.)
- G Water Pump with Filter (Std.)
- H Outside Grill with Work Table (Std. MAC, SE, Hard Side, High Wall)
- I Add-a-Room with Privacy Panels (Opt. all Models Except Hard Side)
- J Power Lift (Std. High Wall and 23SCSE, 28TSCSE, MAC opt LTD)
- K WIFI Ranger Sky 4 WIFI Booster, with internet connectivity available. (NA on MAC & LTDs)
- L Easy Glide Scissorpole Bed Supports (Except LTDs)
- M Bike Rack Option (Most Models)

- N** Under Awning LED Light
[All Models Except LTD's and Hard Sides]
- O** One-Piece Door [Except Hard Side] and Large Entry Assist Handle [Except LTD's]
- P** Beautiful Hardwall Shower with a residential-style flush toilet complete with 12-gallon black and gray water holding tank and monitor panel.
[Std. High Wall & T21DMHW]
- Q** Hanging Pantry
[Opt. all Models Except MAC, Hard Side & LTD's]
- R** Outside Shower [Incl. w/ Hot Water Pkg: Std. , Hard Side, High Wall and Opt: MAC]
- S** AM/FM Stereo with Bluetooth and USB ports.
[N/A LTD & MAC]
- T** Easy Opening Deluxe Sliding Window Curtains [Std.]
- U** Black Water Hose Storage [Std. HW models]
- V** LED Bunk Light [Std. High Wall]
- W** ProRac Roof Mounted Cross Bars w/ Opt. Bike and Kayak Carrier attachments.
[NA on LTD]
- X** Molded LP Bottle Covers
[Std. Hard Side, High Wall Only]



Tent Campers

MAC, SPORTS ENTHUSIAST, HIGH WALL & HARD SIDE STANDARDS & OPTIONS

MODELS	LTD	M	SE	HW	HS
STANDARD & OPTIONAL FEATURES					
Slatewood Interior	S	S	S	--	--
American Maple Interior	--	--	--	S	S
Wood Look Flooring	--	--	--	S	S
Brushed White Flooring	S	S	S	--	--
"Leather Appearance" Seating	S	S	S	S	S
Stainless Steel Look Appliances and Sink	--	--	--	S	S
Electric Water Pump	S	S	S	S	S
Hot Water Package (Incl. Water Filter, Outside Shower, Six Gallon DSI Hot Water Heater, Demand Water Pump) (NA, 176SE; Opt. 206STSE, 207SE; Std. 228BHSE, 23SCSE, 28TSCSE) (Opt. 208; Std. 205, 228D, 425M, 627M)	--	S/O*	S/O*	S	S
Port-A-Potty (425M, T12RB, T12RBST, T12RBTH, T21FSHW, T21QBHW, 206STSE)	--	--	S*	S*	S*
Residential Flush Toilet in Cabinet (HS: T21TBHW Only)	--	--	--	--	S*
Shower and Cassette Toilet Package Incl. Cabinet w/ Shower, Cassette Toilet and Shower Curtain. (Opt. M: 228D, SE: 228BHSE)	--	S*/O*	S*/O*	--	--
Hard Wall Shower with Residential Flush Toilet and Monitor for Holding Tanks, Battery and Water Pump Switch	--	--	--	S	--
Hard Wall Shower w/ Residential Flush Toilet (T21DMHW)	--	--	--	--	S*
Spray Away Utility Hose, Hot & Cold with Hot Water Package.	--	--	S	--	--
Antifreeze Inlet to Bypass Fresh Water Tanks					
When Winterizing	S	S	S	S	S
Two Burner Free-Standing Range	S	--	--	--	--
Permanently Mounted Indoor Range w/Cover	--	S	S	--	S*
Three Burner Glass Top Stove with Oven (T21QBHW, T21FSHW HW29SC, HW27KS)	--	--	--	S	S*
Microwave	--	--	--	S	S
110V Electric Outside Accessible Fridge (627M)	--	S*	--	--	--
3 Way Fridge 1.9 cu. ft.	0	S	S	--	--
3 Way Fridge 2.5 cu. ft.	--	--	--	--	S

MODELS	LTD	M	SE	HW	HS
Extra Large 3 Way Fridge (HS: T21QBHW, T21TBHW, T21DMHW, T21FSHW, HW29SC, HW27KS Only)	--	--	--	S	S*
Residential Style Cabinet Doors	S	S	S	S	S
Wood Drawers w/ Full Extension Metal Guides	S	S	S	S	S
Swing Galley w/Storage	S	S	S	--	--
Large Clothes Bar	--	--	--	S	S
Hanging Wardrobe	--	--	--	0	0
Hanging Pantry	--	0	0	0	--
USB Charging Ports	--	S	S	S	S
Digital Media Receiver w/ AM/FM Stereo, Bluetooth, MP3 Player, USB & Aux. Ports	--	--	S	S	S
TV Outlet with Cable and Satellite Hook Up	--	S	S	S	S
30 Amp Detachable Power Cord w/ Storage Bag	S	S	S	S	S
25 Amp Converter w/ Built in Battery Charger (SE: 176SE)	S	--	S*	--	--
35 Amp Converter w/ Built in Battery Charger	--	S	S	S	S
Roof Vent	S	--	--	--	--
Three Speed Ventilation Fan	--	S	S	S	S
Air Conditioner Wiring Kit	0	0	0	0	--
10k BTU Cool Cat Heat Pump	--	--	--	--	S
13.5k BTU Low Profile Air Conditioner (Factory Installed)	--	--	--	0	--
15k BTU Low Profile Air Conditioner (Factory Installed)	--	--	--	0	--
20k BTU Forced Air Furnace w/ Electric Ignition	0	0	0	0	0
Interior Floor Lights	--	--	--	S	S
Ceiling LED Lights and Jacks for Accessories (Tent Campers)	S	S	S	S	
Ceiling LED Lights (Hard Sides)	--	--	--	--	S
1 Bunk LED Light with Fan	--	S	S	S	--
2 Bunk LED Light with Fan	--	--	--	S	--
LED Bunk Light In Slide Outs	--	S*	S*	S	--
LP Leak/Carbon Monoxide Detector	S	S	S	S	S
Privacy Curtains	S	OP	OP	OP	S
Roof Valances	--	OP	OP	OP	--
Storage Net Over Bunks	--	S	S	S	--

MODELS	LTD	M	SE	HW	HS
Quilted Top Bed Mattresses	S	S	S	--	--
Deluxe Memory Foam Quilted Top Bed Mattresses (HS: T21TBHW, Twin Beds Converts to King)	--	--	--	--	S*
Quilted Top Memory Foam Mattresses	--	--	--	S	S
Thermostatically Controlled Heated Mattresses (NA T21TBHW)	S	S	S	S	S*
Leaf-Spring Axle	S	S	S	--	--
Independent Torsion Axles	--	--	--	S	S
Easy Lube Axles	--	S	S	S	S
Spare Tire, Cover and Mount	S	OP	OP	OP	S
12" Radial Tires	S	--	--	--	--
13" Radial Tires w/ Aluminum Wheels	--	S	--	--	S*
14" Radial Tires w/ Aluminum Wheels (Std. HS: T21QBHW, T21TBHW, T21FSHW, T21DMHW) (Note: Dual Axle Models HW29SC)	--	--	--	S	S*
15" Mud Rover Radial Tires, Aluminum Wheels (Std. T12RBTH, 206STSE, 207SE, 176SE, 228BHSE, 23SCSE, 28TSCSE Only) (Note: Dual Axle 28TSCSE)	--	--	S*	--	S*
Electric Brakes	0	S	S	S	S
EZ Reach Storage with Sliding Tray All Front Storage Models	--	S*	--	--	S*
28.5" Front Storage Deck w/ 200 # Weight Capacity (Std. 228BHSE Only)	--	--	S*	--	--
54" Frt. Storage Deck w/ 650 # Wt. Capacity (Std. SE: 23SCSE)	--	--	S*	--	--
57" Frt. Storage Deck w/ 650 # Wt. Capacity (Std. SE: T12RBTH)	--	--	--	--	S*
105" Front Storage Deck w/ 1300 # Weight Capacity (Std. SE: 28TSCSE)	--	--	S*	--	--
(4) Bike Rack (HS: T12RB - 2 Bikes only)	0	0*	0*	0*	0*
ProRac Systems Permanent Mount Cross bars (Std. on all except LTDs)	--	S	S	S	S
ProRac Systems Upright Bike Carrier	--	0	0	0	0
ProRac Systems Kayak Carrier	--	0	0	0	0
ProRac Systems Load Stops	--	0	0	0	0



MODELS	LTD	M	SE	HW	HS
ProRac Systems Tie Downs	--	0	0	0	0
Power Lift System	0	S	S	S	--
Gas Strut Lift Assist	--	--	--	--	S*
Power Roof Lift Assist (HS: HW models only)	--	--	--	--	S
Front Dormer (HS: T21DMHW, T21FSHW, T21TBHW Only)	--	--	--	--	S*
Built-in A-Frame Mounting Provision for Equalizer					
Hitch Bar Installation	S	S	S	S	S
Double Battery Box and Wiring Kit	--	S	S	S	S
Roof Mount Solar Panel Prep W/1000 watt inverter to power all 110V electrical outlets excluding Microwave and A/C	--	--	S	--	--
Solar Panel Prep on Frame	S	S	S	S	S
40 Watt Solar Panel	0	0	0	0	0
20 lb. LP Bottle	S	S	S	--	--
Dual 20 lb. LP Bottles with Cover and Automatic LP Regulator (Std. SE: 23SCSE, 28TSCSE, 228BHSE Only)	0	0	S*/0*	--	--
Dual 20 lb. LP Bottles with Molded Hard Cover and Automatic LP Regulator	--	--	--	S	S
Diamond Plated Lower Front Cap	--	--	--	S	S
Chrome Diamond Plated Front and Side Skirt	--	--	S	--	--
Awning	S	S	S	S	--
LED Under Awning Light Strip	--	S	S	S	--
Awning/Screen Room	--	--	--	--	0
Screen Room w/ Privacy Panels	0	0	0	0	--
Outdoor Gas Grill w/ Worktable	0	S	S	S	S
Outside Speaker	--	--	S	S	S
Patio Light (206LTD Only)	S*	OP	OP	S	S

MODELS	LTD	M	SE	HW	HS
Courtesy Light on Front (SE: 228BHSE, 23SCSE, 28TSCSE HS: All Models)	--	--	S*	--	S
110V Exterior Outlet (206LTD only)	S*	OP	OP	S	S
Black Water Hose Storage	--	--	--	S	--
Solid Door / Step Combo	--	--	--	S	--
Single Entry Step	S	OP	--	--	S*
Double Door Step (SE: All Models, HS: T21QBHW, T21TBHW, T21DMHW)	--	--	OP	OP	S*
One Piece Screen Door	S	S	S	S	--
Vented Entrance Door Window w/ Screen	--	--	--	--	S
Folding Grab Handle (N/A 176SE)	--	S	S*	S	S
Exterior Graphic Design	S	S	S	S	S
STANDARD CONSTRUCTION FEATURES					
Completely Enclosed Living Area	--	--	--	--	S
One Piece Vacuum Bonded Fiberglass Roof with Metal Interior Ceiling	S	S	S	S	S
Large Rear Roof Tinted Sky Light with Shade	--	--	--	--	S
Two Front Roof Tinted Windows with Shades	--	--	--	--	S
Steel Air Conditioner Reinforcing Laminated Into Roof	S	OP	OP	S	--
3-Stage Double Arm Lifter Posts	S	S	S	S	--
Smooth White Two Tone Fiberglass Vacuum Bonded Exterior	--	--	--	--	S
Lower Door Operational in Closed Position	S	S	S	S	--
Five Piece Sectionalized Herculite Supreme Tenting	S	S	S	S	--
Tent Permanently Attached on Bunk Ends and Slide Out	S	S	S	S	--
Plywood Bunk Ends W/1000 LB Weight Rating	S	S	S	S	--
Full Perimeter Aluminum Bed Frames	S	S	S	S	--

MODELS	LTD	M	SE	HW	HS
Easy Glide Scissor Pole Bed Supports	--	S	S	S	--
Powder Coated Rafter Poles and Bed Bows	S	S	S	S	--
Tinted Vinyl Windows	S	S	S	S	--
Large, Opening Picture Window	--	--	--	--	S
One Piece Undercoated Structure Wood Floor	S	S	S	S	S
E-Coated Tubular Steel Frame	S	S	S	S	S
Rear Crank Down Stabilizer Jacks w/ Sand Pads	S	--	--	--	--
(4) E-Z Crank-Down Stabilizer Jacks w/ Sand Pads	--	S	S	S	S
11 Gallon Fresh Water Tank	S	--	--	--	--
Under Floor 20 Gallon Fresh Water Tank	--	S	S	S	S
12 Gallon Gray Water Holding Tanks	--	--	--	S	--
12 Gallon Black Water Holding Tank	--	--	--	S	--
2000 lb. Tongue Jack w/ Swivel Wheel	S	S	S	S	S
Power Front Jack	--	--	--	0	0
7-Way Pigtail Plug	S	S	S	S	S
WiFi Ranger WiFi Booster SKY 4	--	--	S	S	S

LTD = LIMITED, M = MAC, SE = SPORTS ENTHUSIASTS, HW = HIGH WALL, HS = HARD SIDE / HARD SIDE HW, S = STANDARD, 0 = OPTIONAL, -- NOT AVAILABLE.

OP = OPTION PACKS, * = SELECTED MODELS, STANDARDS & OPTIONS ARE SUBJECT TO CHANGE.

Look for our other popular lines of Flagstaff camping trailers.



FLAGSTAFF E-PRO



FLAGSTAFF TRAVEL TRAILERS



FLAGSTAFF FIFTH WHEELS

FREE MEMBERSHIP
to Forest River Owners' Group



www.forestriverfrog.com



PRE-DELIVERY INSPECTION FACILITY

20,000 square feet of quality assurance. The bare essentials for a premium product. This state-of-the-art facility gives immediate daily feedback to production for quality assurance in every unit built.



**24/7 EMERGENCY
ROADSIDE ASSISTANCE
WITH VEHICLE PURCHASE***

TOWING
JUMP-STARTS
TIRE CHANGES
FLUID DELIVERY
LOCKOUT
SERVICE

WINCH-OUT
MOBILE MECHANIC
TECHNICAL
SUPPORT
DEALER LOCATOR
SERVICES



*VALID FOR 1 YEAR FROM DATE OF PURCHASE

SPECIFICATION DEFINITIONS

GVWR (Gross Vehicle Weight Rating) - is the maximum permissible weight of the unit when fully loaded. It includes all weights, inclusive of all fluids, cargo, optional equipment and accessories. For safety and product performance do NOT exceed the GVWR.

GAWR (Gross Axle Weight Rating) - is the maximum permissible weight, including cargo, fluids, optional equipment and accessories that can be safely supported by a combination of all axles.

UVW (Unloaded Vehicle Weight)** - is the typical weight of the unit as manufactured at the factory. It includes all weight at the unit's axle(s) and tongue or pin and LP Gas. The UVW does not include cargo, fresh potable water, additional optional equipment or dealer installed accessories.

*Estimated average based on standard build optional equipment.

CCC (Cargo Carrying Capacity)** - is the amount of weight available for fresh potable water, cargo, additional optional equipment and accessories. CCC is equal to GVWR minus UVW. Available CCC should accommodate fresh potable water (8.3 lbs per gallon). Before filling the fresh water tank, empty the black and gray tanks to provide for more cargo capacity.

** Estimated average based on standard build optional equipment

Each Forest River RV is weighed at the manufacturing facility prior to shipping. A label identifying the unloaded vehicle weight of the actual unit and the cargo carrying capacity is applied to every Forest River RV prior to leaving our facilities.

The load capacity of your unit is designated by weight, not by volume, so you cannot necessarily use all available space when loading your unit.

Flagstaff Warranty. Our Promise.

FOR DETAILS ON FLAGSTAFF'S COMPLETE WARRANTY PROGRAM, SEE YOUR FLAGSTAFF DEALER. When it comes to backing products with the same quality and commitment it does when it begins the manufacturing process, the only name you have to remember when you're looking for a recreational vehicle is Flagstaff. Flagstaff offers the following additional limited warranties to the original purchasers. Consult written warranty for details.

1. Five-year roof warranty (Excludes Hardsides),
2. Twenty-five-year floor warranty,
3. Five-year frame warranty,
4. Five-year tent warranty,
5. Ten-year warranty on torsion axle suspension,
6. Limited lifetime warranty of lifter system (Excludes Hardsides)



Learn More
Scan this barcode using a QR Reader on your smart phone to learn more about Forest River.



A Berkshire Hathaway company.



201 WEST ELM MILLERSBURG, IN 46543 WWW.FORESTRIVERINC.COM/FLAGSTAFF 574.642.2640

CUSTOMER SATISFACTION

YOUR FLAGSTAFF DEALER



www.ForestRiverBuyLocal.com

All information contained in this brochure is believed to be accurate at the time of publication. However, during the model year, it may be necessary to make revisions and Forest River, Inc., reserves the right to make all such changes without notice, including prices, colors, materials, equipment and specifications as well as the addition of new models and the discontinuance of models shown in this brochure. Therefore, please consult with your Forest River dealer and confirm the existence of any materials, design or specifications that are material to your purchase decision. Litho. U.S.A. FOR 1711 P&W: 2019.10.14