

Laredo

2008



A UNITY OF BEAUTY AND FUNCTION
The 2008 Laredo Travel Trailers and Fifth Wheels



One of a Kind

You are looking for a special recreational vehicle. You want the performance and durability of a luxury towable. You want the interior beauty and conveniences found in the upscale brands.

Yet you do not want to be burdened with the weight and size of a larger RV. You want to be able to tow with ease, settle quickly into the scenic haven of your choice, and proceed to live, relax, and entertain in a home-like setting that doesn't leave you dreading a rainy day.

You want an RV based on performance and dedicated to comfort and luxury, with the many extra touches that make you feel pampered. For you, Keystone RV Company has created the Laredo — One of a Kind.

At right, Laredo's antique bronze designer faucet graces the deep double bowl sinks.

At left, the 2008 Laredo 315RL Fifth Wheel in Evergreen. You won't know you're inside an RV as you lounge in your armchairs before a beautiful corner fireplace...until you take in the splendid view through the two enormous picture windows. The angled kitchen counter allows you to enjoy the view and the state-of-the-art entertainment center while preparing meals or serving your guests. Laredo life is a life of comfort, convenience, and relaxation.



As seen in the above photo, the 315RL Laredo features a kitchen larger and more convenient than you'll find in many homes!

DECOR CHOICES



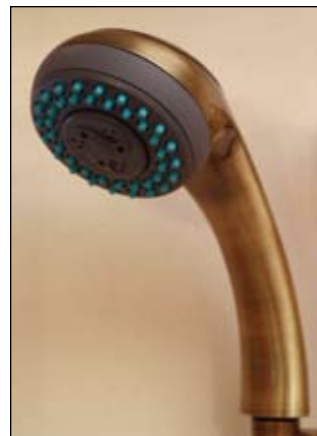
Copper Ridge



Sienna



Evergreen



Shown above, the 2008 Laredo Fifth Wheel, in the Evergreen Color Scheme. The billowy, quilted bed spread with matching shams and window valances gives a luxury hotel suite feeling to the room. Unlike other RV beds, the Laredo full-queen is footed, with room for you to tuck your slippers beneath it.

Lighter woods and carpeting give the simpler, fresher look of today's interiors. You will have no trouble blending in your own belongings, so go ahead, take along those favorite pictures and grandma's antique clock. Storage is not an issue. In the right foreground, there is a huge wardrobe with deep drawers and a TV counter.



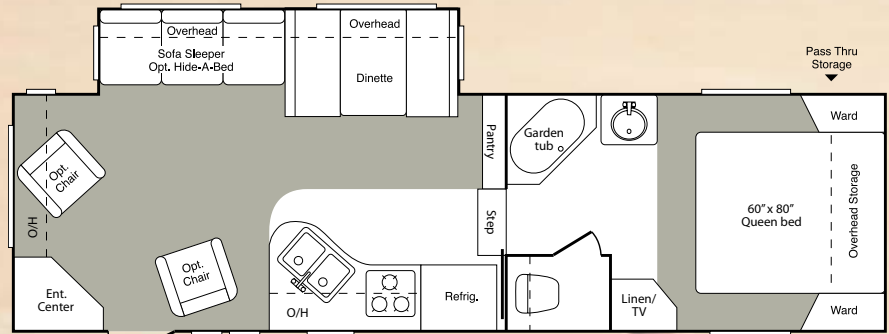
Five-Star Comfort Suite

A big reason for the excitement of the 2008 Laredo is the fresh approach to RV interiors. Laredo's designers focused on your comfort as they threw out all the traditional ideas of how an RV should be appointed.

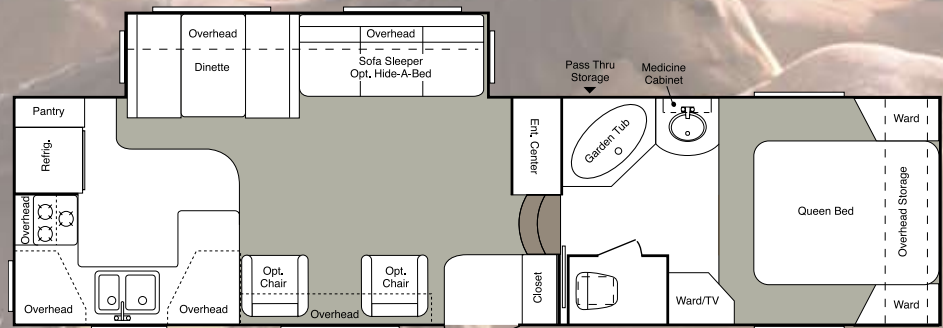
For example, behold the Laredo Fifth Wheel Five-Star Comfort Suite for 2008, all on one level. It is easily the most luxurious, spa-like, bedroom/bathroom retreat ever built in a mid-sized fifth wheel.

For many years, RV designers considered the bedroom as a small, tight place to rest your head and store your clothes after a day of travel. Laredo's concept is completely different. Our appealing Comfort Suite is planned for you to spend plenty of time there. With its bookcase headboard cleverly recessed into formerly unused space in the front end, your Laredo queen bed becomes the ideal spot for you to enjoy your favorite book, watch TV, or even enjoy your breakfast.

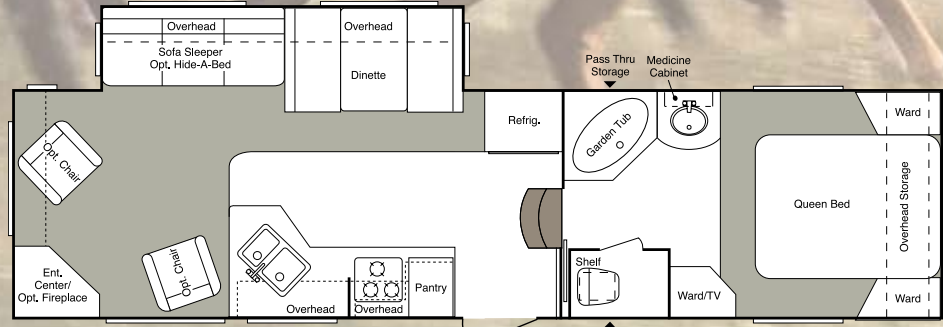
After that, you'll enter the extra large neo-angle tub/shower and enjoy any of several spray options. There's a skylight for brightness and headroom. Now, who knows? You might linger for a little more rest, or you can use the full-length mirrors to check your grooming for a day in town. The Five-Star Comfort Suite is an important part of the Laredo life style. Enjoy!



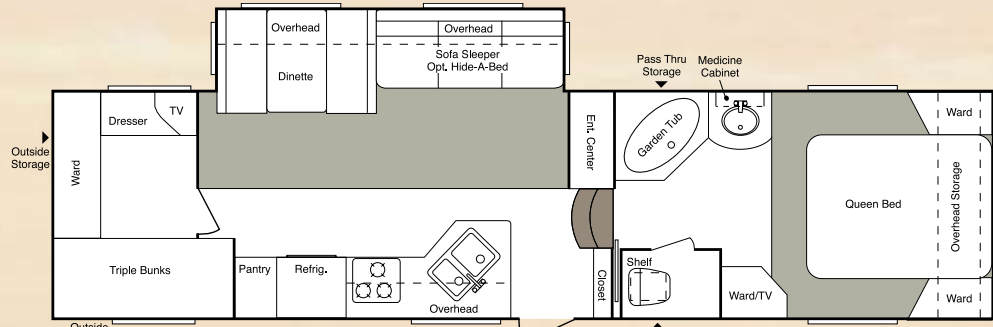
265RL



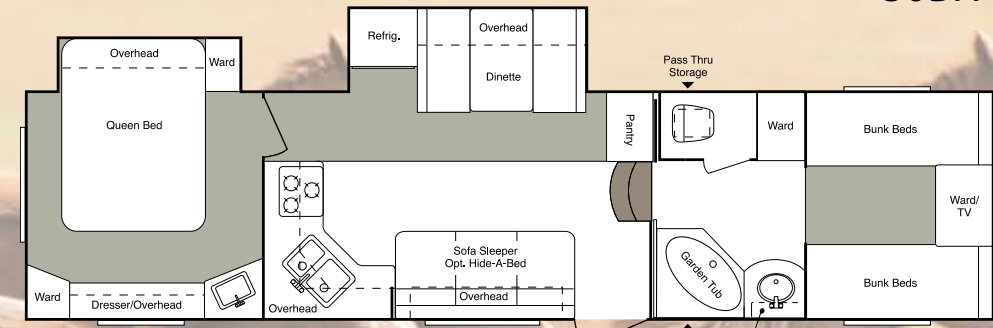
29RK



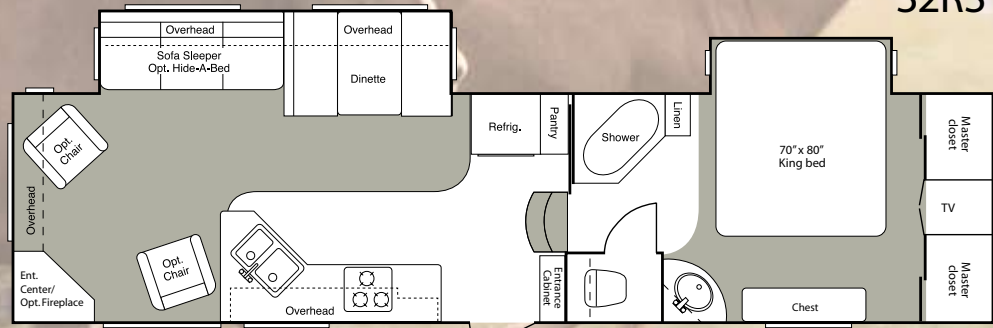
29RL



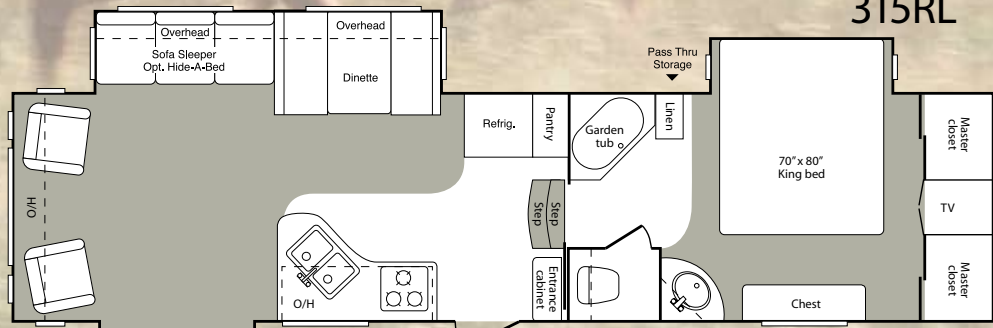
30BH



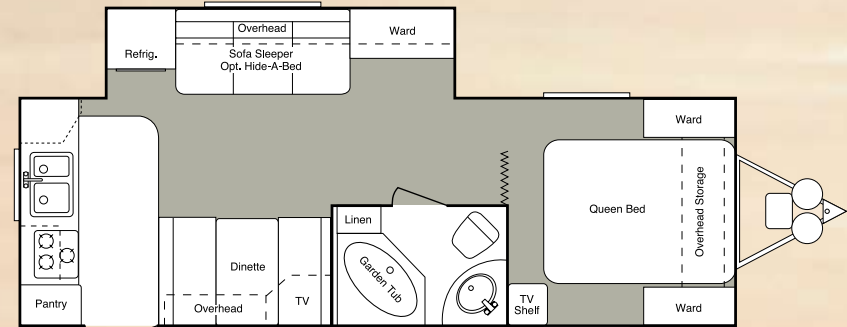
32RS



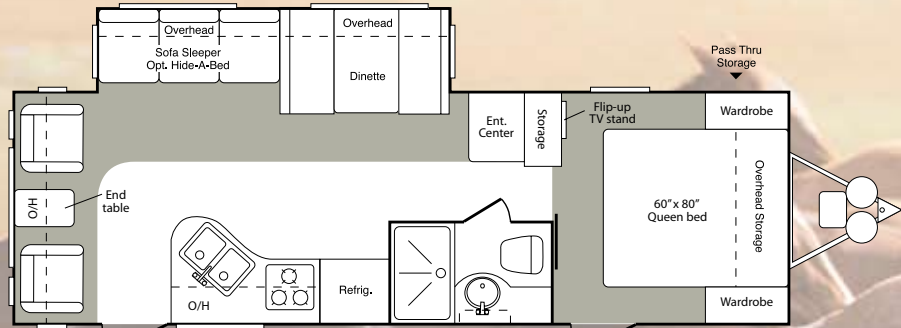
315RL



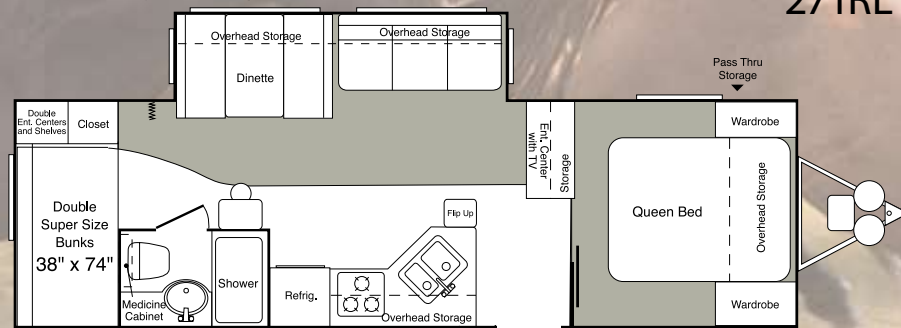
320TRL



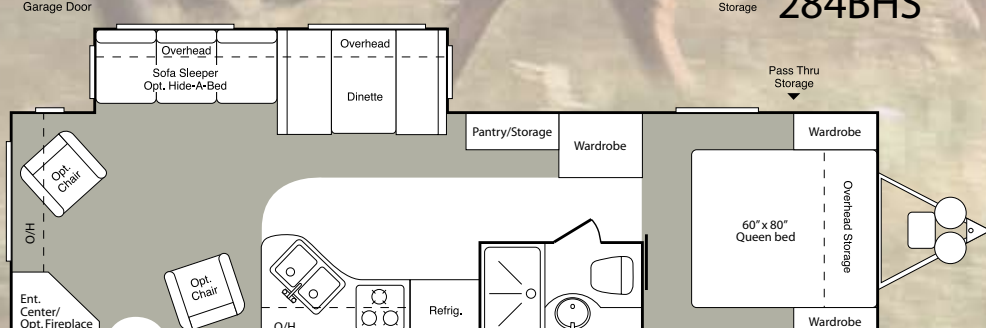
26RK



271RL



284BHS



311RL

LAREDO FEATURES

CONSTRUCTION

Tires & Chassis

- 8"-10" powder-coated I-Beam frame
- Leaf spring "equalizing" suspension system
- 225-15" Trailer Tires—Designed to reduce bounce and sway
- 12" electric brakes
- Full-size spare tire
- Adjustable extended hitchpin

EXTERIOR

- Huge, lighted pass-through storage compartments
- Entry assist handle
- Rain gutters with downspouts
- Porch light
- Patio scare light
- Utility light
- Deluxe patio awning

INTERIOR

Living Area

- Residential carpeting and carpet pad
- Stain-resistant fabrics
- Entertainment center with TV cabinet
- Residential-steel drawer guides
- Overhead cabinets in slideouts
- Ventilating windows on slideout end walls

Kitchen

- Residential-size overhead cabinets
- 60/40 deep-bowl acrylic kitchen sink
- Oak knife holder in countertop
- Linoleum kitchen floor
- Three power outlets in every kitchen!
- Deep, real wood drawers
- Sink cover (1)

Bathroom

- Residential fiberglass tubs & showers—not ABS!

- Tub surround
- Shower door
- Residential adjustable shower head
- Large, residential-size bath sink
- Residential-style medicine cabinet
- Skylight over bath
- Power roof vent

Bedroom

- Heavily quilted bedspread with pillow shams
- High-capacity wardrobes
- Functional headboard with shelf and power outlets FW, NA on 32RS, 315 RL, 320TRL
- TV hook-up
- 6'2" of headroom at foot of bed (FW)
- Residentially designed bed with shoe storage

Appliances

- Over-the-range microwave
- High output range with auto-igniter and 22" oven

Utilities

- Easy access double 30-lb. LP bottles with auto changeover
- 30,000 BTU E.I. high-output furnace with automatic ignition
- 6 Gallon gas/elec. DSA hot water heater all travel trailers and 25RK, 265RL, 29RK, 29RL, 30 BH, 32RS
- 10 Gallon E.C. gas/elec. DSI hot water heater-315RL, 320TRL
- Winter Guard winterizing kit
- Water heater bypass kit
- Systems monitor panel
- 55-amp converter
- 30-amp power cord

SAFETY

- LP gas leak detector
- Smoke detector
- Carbon monoxide detector
- Fire extinguisher
- Safety chains (TT)

- Electric brakes with breakaway switch
- Safety glass windows

RESIDENTIAL LIVING PACKAGE (REQUIRED)

- AM/FM/CD/DVD player
- Mortise and tenon raised panel cabinet doors
- Residential faucets,
- Porcelain foot flush toilet
- 60" x 80" queen bed
- Day/night shades

COMFORT PLUS PACKAGE (REQUIRED)

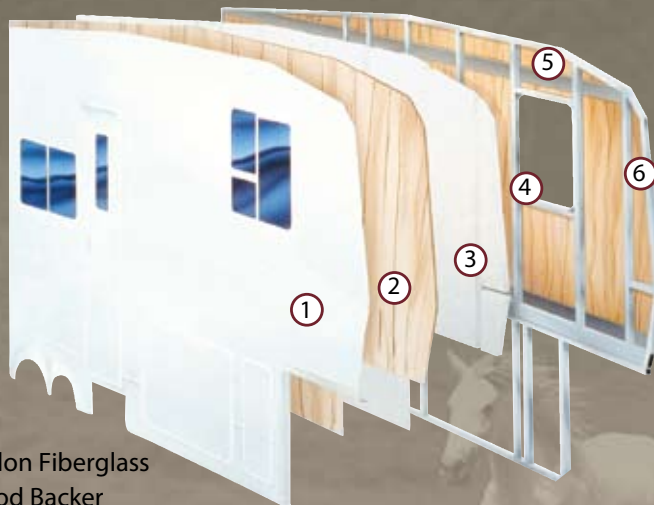
- Laminated and aluminum framed sidewalls
- 5200 lb. easy lube axles
- Heated and enclosed underbelly
- 6 cubic foot refrigerator all travel trailers and 25RK, 265RL, 29RK, 29RL, 30BH, 32RS
- 8 cubic foot extra large refrigerator 315RL, 320TRL
- Manual override on slide outs
- Fiberglass front cap (FW)
- Rear ladder (FW)
- Removable picnic table all FW except 315RL and 320TRL
- Deep tint safety glass windows
- Stabilizer jacks
- Electric front jacks (FW)
- Exterior shower
- 13,500 btu ducted air conditioning
- Cable and satellite hook-ups

ADDITIONAL AVAILABLE OPTIONS

- Hide-a-bed sofa
- Free standing table and chairs, IPO Booth dinette
- 24" TV (N/A on 26 RK, 271RL)
- Fireplace (29 RL, 311 RL, 315 RL, 320TRL, 33 BL)

Welded 2" aluminum framing is at the heart of our 4-layer sidewall construction, engineered to make your Laredo strong and durable while creating a fifth wheel that is easier to tow.

Previously found only in fifth wheels at a much higher price point, Laredo's structural integrity assures you of strength, superior insulation, and durability for many years to come.



Sidewalls

1. Gel-Coated Filon Fiberglass
2. 1/8" Luan Wood Backer
3. Solid Block EPS (Expanded Polystyrene) Insulation
4. Radius Window Corner Blocks
5. Metal Backing Strips (EGS Electro-Galvanized Sheet)
6. 2" Welded Aluminum Sidewall Studs



An exterior hot/cold shower is standard on every floor plan.



15" tires and easy-to-lube axles are standard for the entire Laredo product line.

EXTERIOR



Laredo's one-piece underbelly completely encloses its insulated and heated subfloor and reduces wind resistance while towing.



Laredo provides high-capacity, exterior-access storage on every floor plan. Shown left, a removable picnic table.



Under-floor toolbox storage is available in all fifth wheels.

TRAVEL TRAILERS

	26RK	271RL	284BHS	311RL
Shipping Weight	6310	6730	6855	7190
Carrying Capacity	3690	3270	3145	2810
Hitch	690	820	670	865
Exterior Length	28' 10"	30' 6"	32' 4"	33' 7"
Exterior Width	8'	8'	8'	8'
Ext Height	11' 0"	11' 0"	11' 0"	11' 0"
Fresh Water	51	51	51	51
Waste Water	30	30	28	30
Grey Water	30	30	28	30
Tire Size	225/75D15D	225/75D15D	225/75D15D	225/75D15D

Laredo

2008 Travel Trailers and Fifth Wheels

For more information, contact your Laredo Dealer:

Laredo Travel Trailers and Fifth Wheels are products of:



Keystone RV Company

2642 Hackberry Drive, Goshen, IN 46526
574.535.2100 www.keystone-laredo.com

Member



Go RVing
Life's A Trip

FIFTH WHEELS

	265RL	29RK	29RL	30BH	315RL	32RS	320TRL
Shipping Weight	7645	7955	7975	8400	9030	8885	9785
Carrying Capacity	3970	2945	2925	3100	2985	2790	2345
Hitch	1455	1435	1480	1575	1855	1515	1970
Exterior Length	29' 10"	31' 10"	31' 10"	33' 10"	35'	34' 6"	35'
Exterior Width	8'	8'	8'	8'	8'	8'	8'
Ext Height	11' 9"	11' 10"	11' 6"	12'	12' 4"	11' 10"	12' 2"
Fresh Water	51	51	51	51	55	51	55
Waste Water	42	40	40	40	42	42	42
Grey Water	42	72	72	72	72	72	72
Tire Size	225/75D15D	225/75D15D	225/75D15D	225/75D15D	225/75D15D	225/75D15D	225/75D15D

Product information is as accurate as possible as of the date of publication of this brochure. Features, floor plans, and specifications are subject to change without notice. Please also consult Keystone's web site at keystonerv.com for more current product information and specifications.
Tow Vehicle Disclaimer: CAUTION: Owners of Keystone recreational vehicles are solely responsible for the selection and proper use of tow vehicles. All customers should consult with a motor vehicle manufacturer or their dealer concerning the purchase and use of suitable tow vehicles for Keystone products. Keystone disclaims any liability or damages suffered as a result of the selection, operation, use or misuse of a tow vehicle. KEYSTONE'S LIMITED WARRANTY DOES NOT COVER DAMAGE TO THE RECREATIONAL VEHICLE OR THE TOW VEHICLE AS A RESULT OF THE SELECTION, OPERATION, USE OR MISUSE OF THE TOW VEHICLE. 5/08