

adventure, inspired by



**AIRSTREAM**

FLYING CLOUD

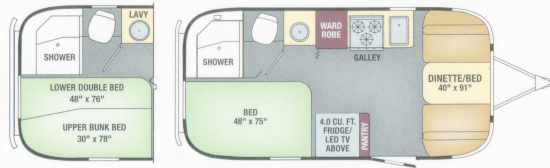




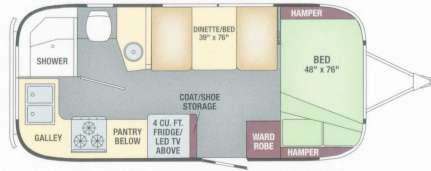


# Floorplans

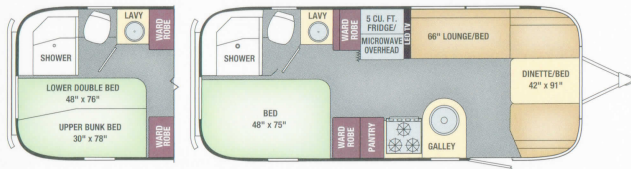
19



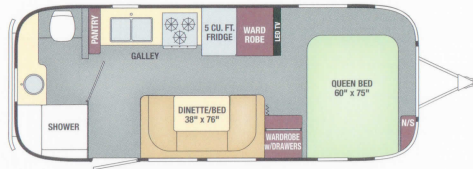
20



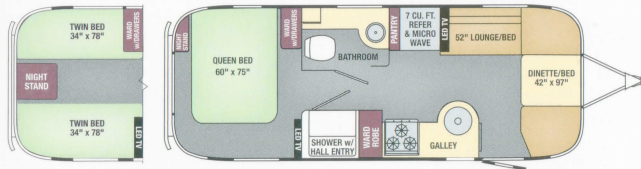
23D



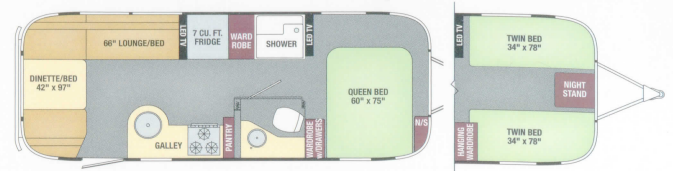
23FB



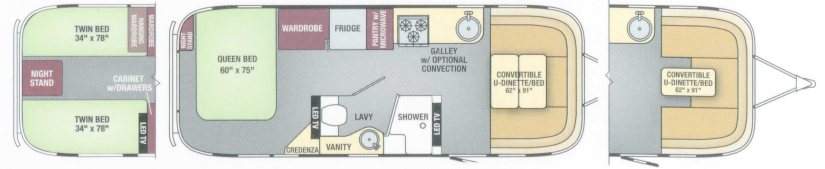
25



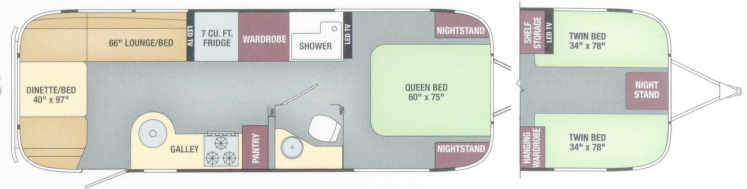
25FB



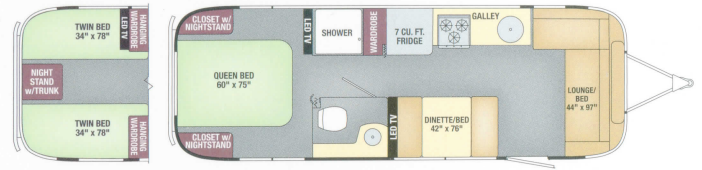
26U



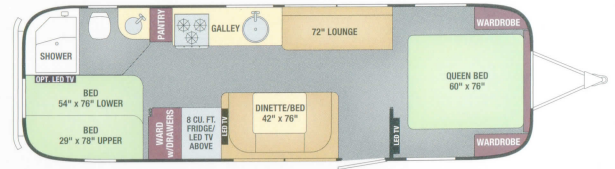
27FB



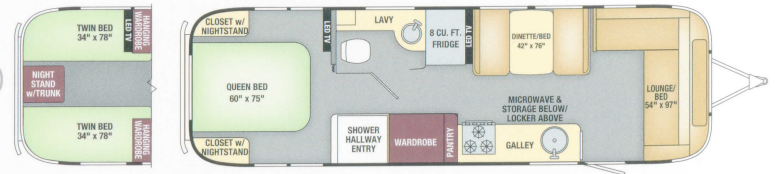
28



30FB Bunk



30







Cashew Ultraleather™ with Mica



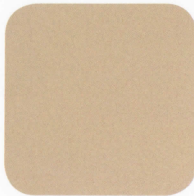
Cabinetry



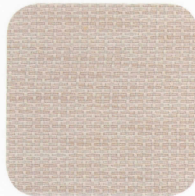
Flooring



Countertops



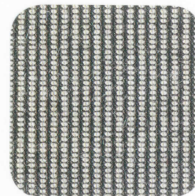
Seating



Bedspread

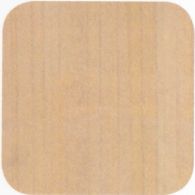


Accent



Awning

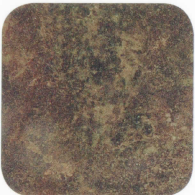
Cashew Ultraleather™ with Golden Night



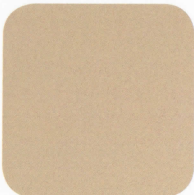
Cabinetry



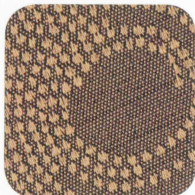
Flooring



Countertops



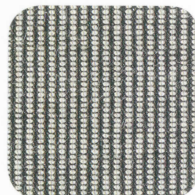
Seating



Bedspread



Accent



Awning

Black Ultraleather™ with Golden Night



Cabinetry



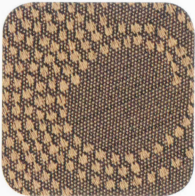
Flooring



Countertops



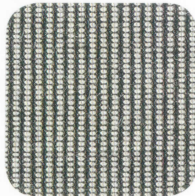
Seating



Bedspread



Accent



Awning









**THOR**  
INDUSTRIES, INC.

Airstream is a subsidiary  
of Thor Industries, Inc.

All content and images  
© Airstream 2015 & 2016

FC 10k 11/15a

Airstream, Inc.  
419 West Pike Street  
P.O. Box 629  
Jackson Center, OH  
45334 USA  
937-596-6111  
[www.airstream.com](http://www.airstream.com)

Product information, specifications, and photography in this brochure were as accurate as possible at time of printing. Photographs may contain some features that are optional on your vehicle.

Since we continually strive to improve our products, actual products may differ. Prices and specifications are subject to change without notice. All capacities are approximate and dimensions are nominal. Some features or options may be different or unavailable in other countries.

**Warning** – This information is intended as a guide only. Weights of individual vehicles may vary. Consult your owner's manual for complete loading, weighing, and towing instructions. Do not overload the travel trailer.