



MINNIE FAMILY

**WINNEBAGO**



## Minnie Drop

The retro shape you love, with all the amenities you desire! Six feet five inches wide, with an eight-foot tire stance—Minnie Drop combines the best of both worlds...stability and ease of towing. The Minnie Drop's deliberate design allows you to see around the unit using just your tow vehicle's side mirrors. Most Minnie Drop floorplans have dry weights under 3,000 lbs. If it's adventure you're after check out the Minnie Drop.

## Micro Minnie

Who knew fun could be found in a small camper? Seven feet wide, ten open floorplans, and full featured, the Micro Minnie is your ticket to the great outdoors. The all new 2108TB floorplan offers more flexible sleeping arrangements. A King mattress easily converts into two Twin mattresses.



## Micro Minnie 5<sup>th</sup> Wheel

The all new Micro Minnie 5<sup>th</sup> Wheel combines towability with the convenience of a seven-foot-wide unit giving you the ultimate user-friendly towable! Weighing in the 5,000 pound class, the Micro Minnie 5<sup>th</sup> Wheel can be pulled by most mid-sized trucks! Enjoy spacious living areas, Queen bed, and sofa or dinette for additional sleeping space in every floorplan.





## Minnie

Minnie does not describe the space and features this unit brings to the campground. Each floorplan is built on an eight-foot-wide frame and includes extendable slide outs that increase living space. No need to compromise between light weight and functional—with the Minnie, you can have both.

## Minnie Plus

Looking for a camping partner with more? Look at Minnie Plus. Offering more slide outs, bigger floorplans and upgraded features. Prepare a meal on the solid surface counter top, or relax in the ultra-comfy theater seating and you'll be happy to be home away from home.



## Minnie Plus 5<sup>th</sup> Wheel

Introducing the 5<sup>th</sup> wheel of your dreams! Designed specifically to be pulled by most half ton trucks. The Minnie Plus features a residential sized Queen bed, ample storage, and easy access to an impressive master bath. A unique, painted, fiberglass front cap with LED lighting creates the perfect combination of protection and style.



Dinette converts for additional sleeping space



Full size kitchen amenities



54" x 74" Murphy Bed

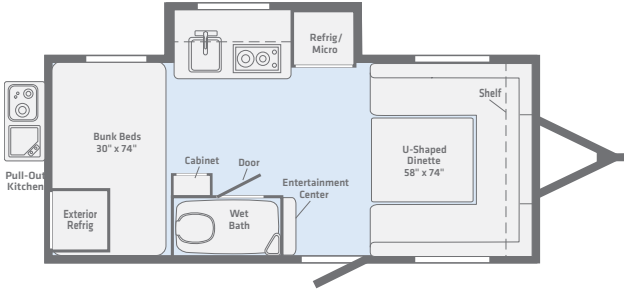


Interior photos are of the 210RBS floorplan with Pearl décor  
Exterior photo is of the 210RBS floorplan  
*\*Single axle model shown on cover page*

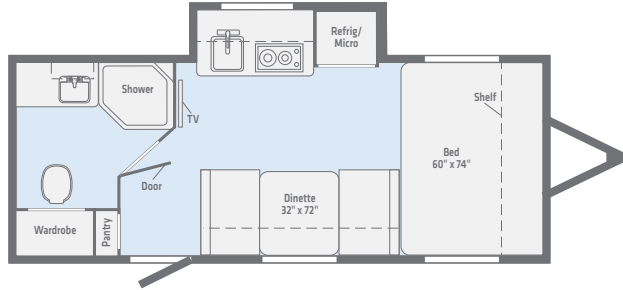
Minnie  
Drop

## Floorplans

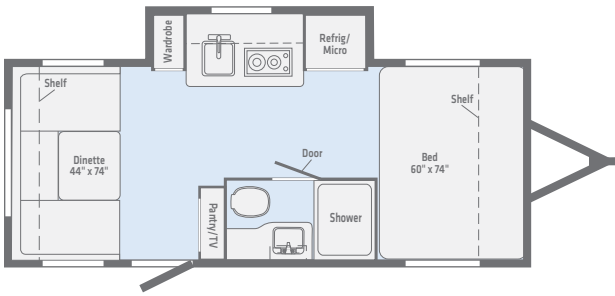
170K



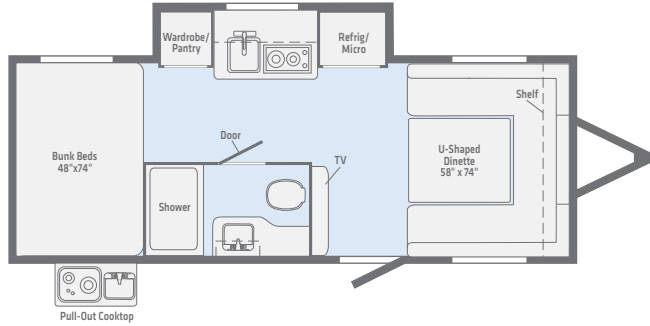
170S



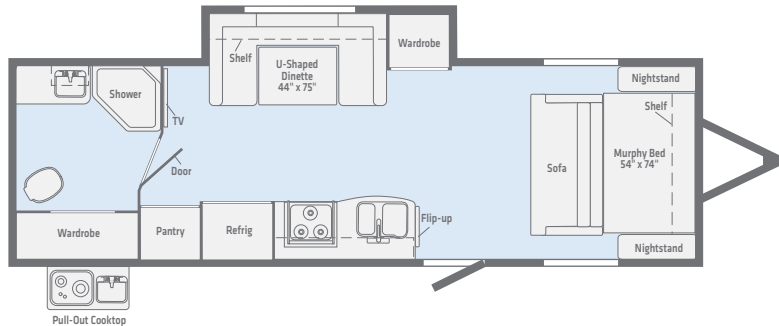
185DB



190BH



210RBS



## Standard Features

- NXG Engineered Chassis
- Noble Classic High Gloss Fiberglass Sidewalls
- One Piece Fiberglass Roof
- 13.5K BTU Low Profile Air
- Convection Microwave (N/A 210RBS)
- AV System AM/FM/CD/DVD/USB/Bluetooth
- USB Charging Ports
- Gas Electric Refrigerator
- 6 Gallon Gas/Electric/DSI Water Heater
- TV Antenna with Booster
- Exterior Speakers
- Aluminum Wheel Assemblies
- Power Awning w/ LED Lighting
- Solar Charger Prep
- LED TV
- Power Tongue Jack
- Backup Camera Prep
- Drop in Two Burner Cooktop (N/A 210RBS)
- 15" Offroad Tire/Axle Lift
- 3,700lb Torsion Axle(s)
- Three Burner Range w/ Oven (210RBS Only)

## Options

- Enclosed Tanks



Modern amenities extend into the galley



Spacious dinette



King mattress converts into two Twin beds

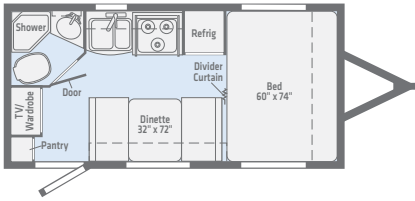


Interior photos are of the 2108TB floorplan with Pearl décor  
Exterior photo is of the 1706FB floorplan

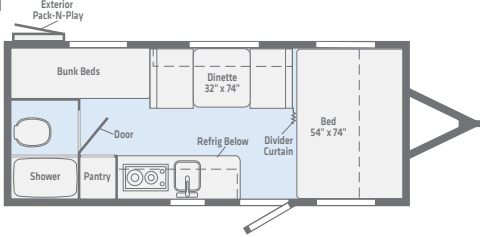
Micro  
Minnie

## Floorplans

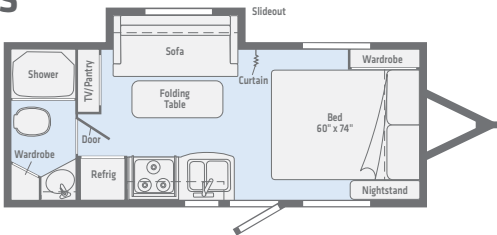
1706FB



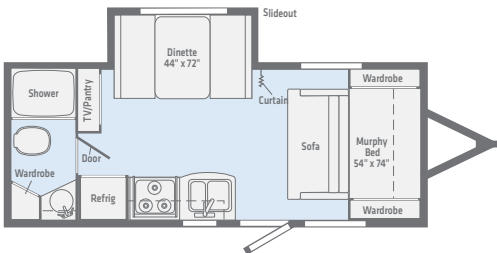
1700BH



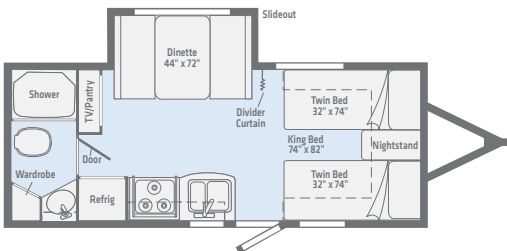
2106FBS



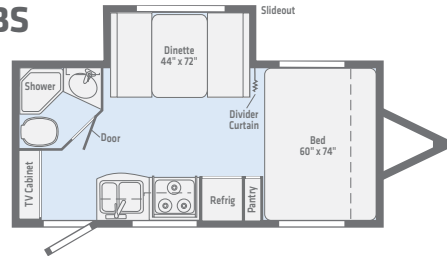
2108DS



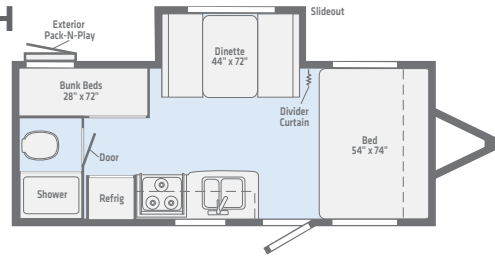
2108TB



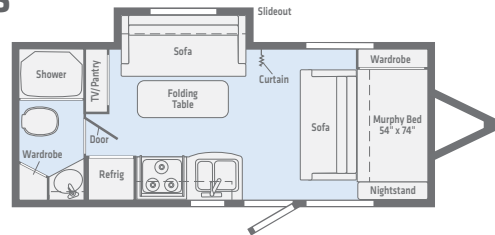
1808FBS



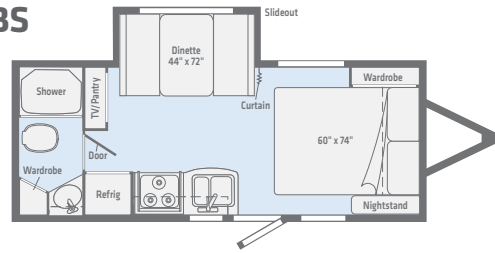
2100BH



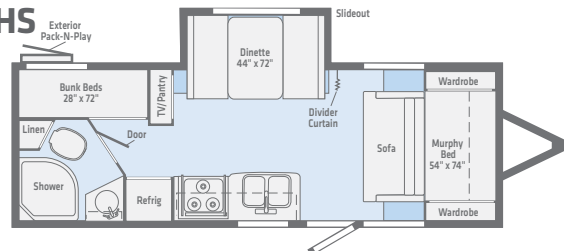
2106DS



2108FBS



2306BHS



## Standard Features

- NXG Engineered Chassis
- Noble Classic High Gloss Fiberglass Sidewalls
- TPO Roof
- 13.5K BTU Roof Air
- Microwave
- AV System AM/FM/CD/DVD/USB/Bluetooth
- USB Charging Ports
- Gas Electric Refrigerator
- 6 Gallon Gas/Electric/DSI Water Heater
- TV Antenna w/ Booster
- LED TV
- Exterior Speakers
- Aluminum Wheel Assemblies
- Heated and Enclosed Tanks
- Power Awning with LED Lighting
- Solar Charger Prep
- Backup Camera Prep
- Power Tongue Jack
- 15" Offroad Tire/Axle Lift
- 3,700lb Torsion Axles
- Drop-In Two Burner Cooktop (1700BH Only)
- Three Burner Range w/ Oven (N/A 1700BH)

## Options

- 15.0K BTU A/C Upgrade
- Extreme Weather Package

# Minnie Family | | Micro Minnie 5<sup>th</sup> Wheel



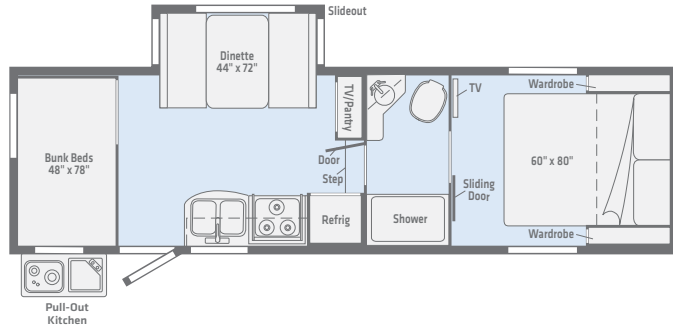
Interior photos are of the 2405RG floorplan with Pearl décor  
Exterior photo is of the 2405RG floorplan

Micro Minnie  
5<sup>th</sup> Wheel

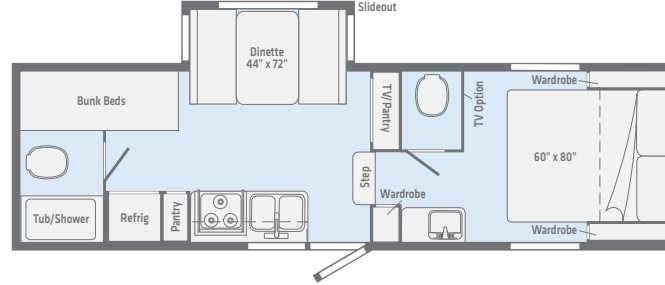


## Floorplans

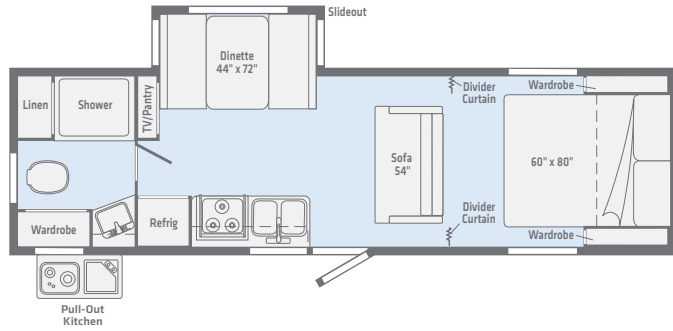
### 2405BH



### 2405BHDB



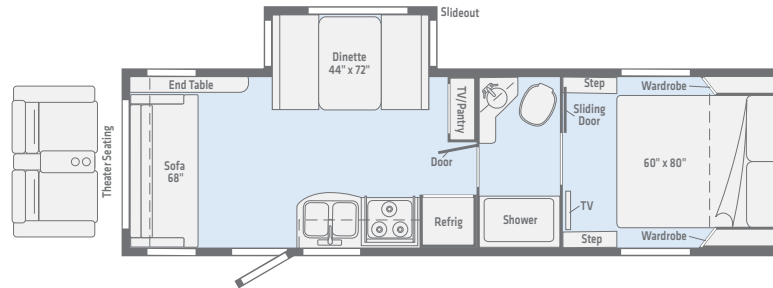
### 2405RB



### 2405RG



### 2405RL



## Standard Features

- NXG Engineered Chassis
- Noble Classic High Gloss Fiberglass Sidewalls
- TPO Roof
- 13.5K BTU Roof Air
- Stainless Steel Microwave
- Stainless Steel Flush Mount Three Burner Range w/ Oven
- AV System AM/FM/CD/DVD/USB/Bluetooth
- USB Charging Ports
- Gas Electric Refrigerator with Stainless Inserts
- 6 Gallon Gas/Electric/DSI Water Heater
- TV Antenna w/ Booster
- LED TV
- Exterior Speakers
- Aluminum Wheel Assemblies
- Heated and Enclosed Tanks
- Power Awning w/ LED Lighting
- Solar Charger Prep
- Backup Camera Prep
- Fold Out Solid Entrance Step
- 15" Offroad Tire/Axle Lift
- 3,700 lb. Torsion Axles

## Options

- 15.0K BTU A/C Upgrade
- Extreme Weather Package
- Theater Seating IPO Sofa (2405RL Only)



Slide room extends the livable space



Spacious dinettes are standard in every floorplan



Double bunks

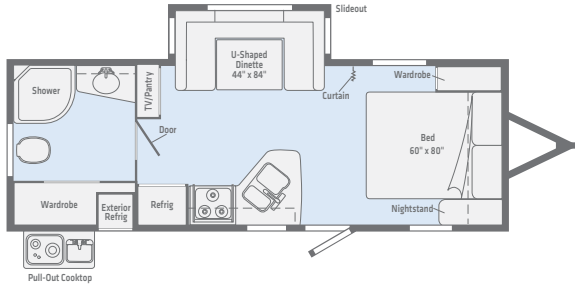


Interior photos are of the 2455BHS floorplan with Pearl décor  
Exterior photo is of the 2500FL floorplan

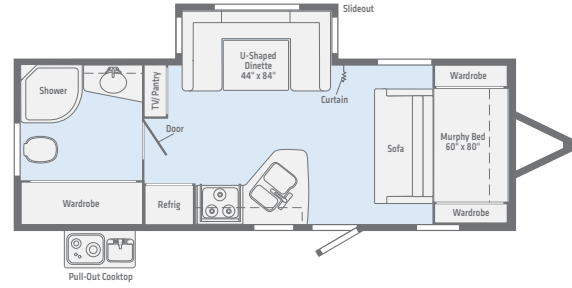


## Floorplans

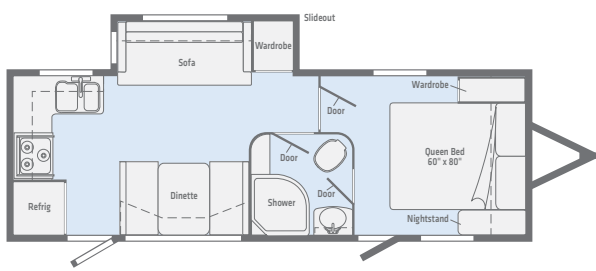
### 2201DS



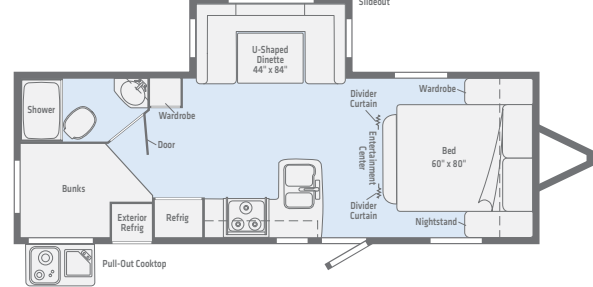
### 2201MB



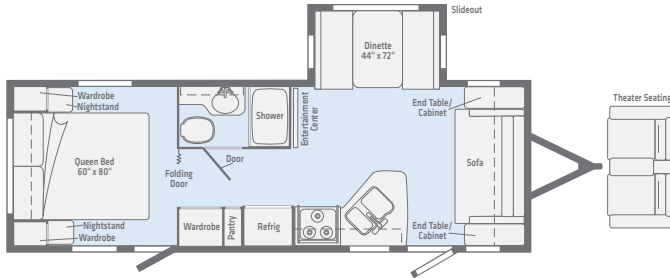
### 2401RG



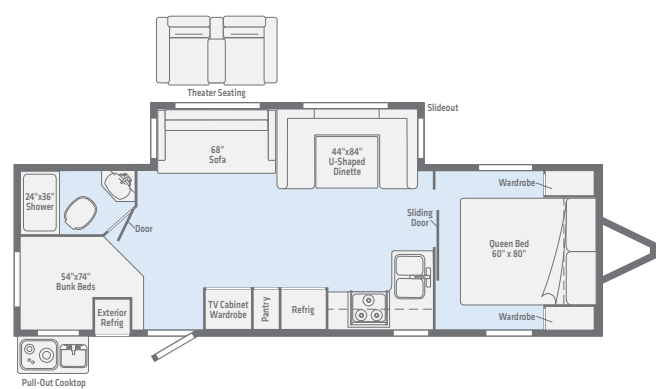
### 2455BHS



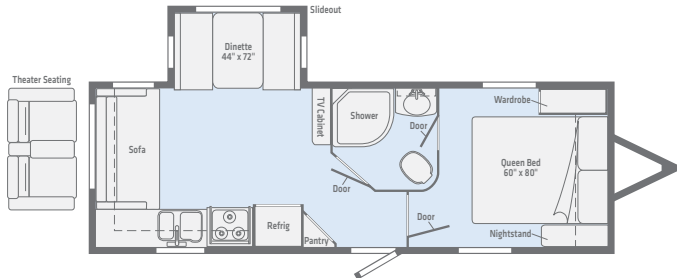
### 2500FL



### 2801BHS



### 2500RL



## Standard Features

- NXG Engineered Chassis
- Noble Classic High Gloss Fiberglass Sidelalls
- TPO Roof
- Fiberglass Front Cap
- 13.5K BTU Roof Air
- Microwave
- Flush Mount Three Burner Range with Oven
- AV System AM/FM/CD/DVD/USB/Bluetooth
- USB Charging Ports
- Double Door Gas Electric Refrigerator
- 6 Gallon Gas/Electric/DSI Water Heater
- TV Antenna w/ Booster
- LED TV
- Exterior Speakers
- Aluminum Wheel Assemblies
- Heated and Enclosed Tanks
- Power Awning with LED Lighting
- Power Tongue Jack
- Solar Charger Prep
- Backup Camera Prep

## Options

- 15.0K BTU A/C Upgrade
- Extreme Weather Package
- Theater Seating IPO Sofa (2500FL, 2500RL, 2606RL, 2801BHS only)
- 30# LP Tank Option Upgrade
- 19\" LED Bedroom TV w/ Flip Down Bracket (N/A 2201DS, 2201MB)

Expansive entertainment and cooking space



Standard theatre seating



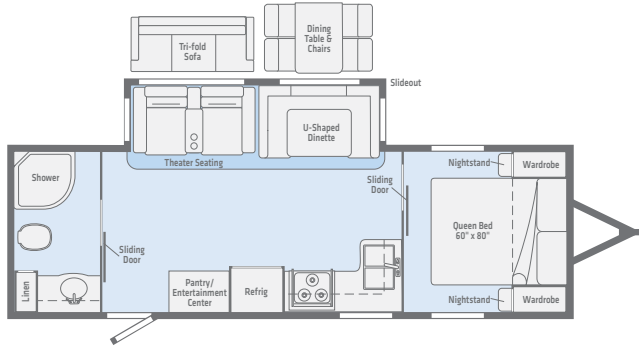
Comfortable tri-fold sofa

Interior photos are of the 30RLSS floorplan with Pearl décor  
Exterior photo is of the 30RLSS floorplan

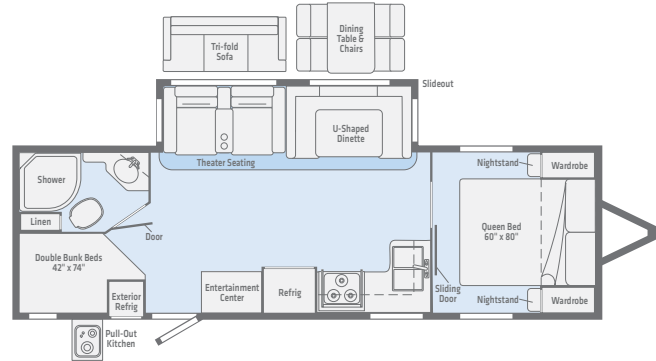
Minnie  
Plus

## Floorplans

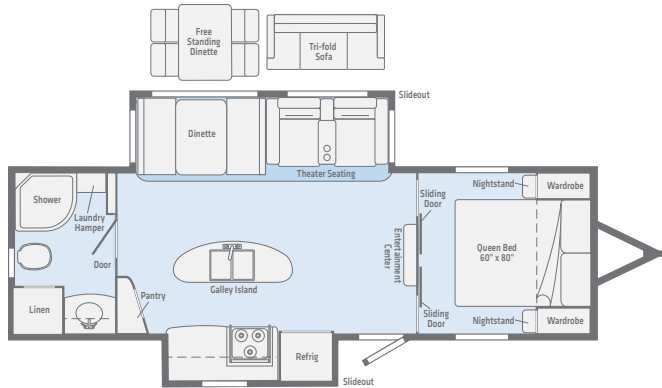
### 26RBSS



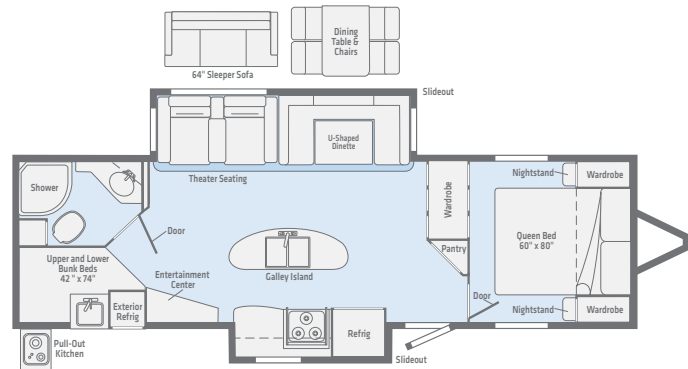
### 27BHSS



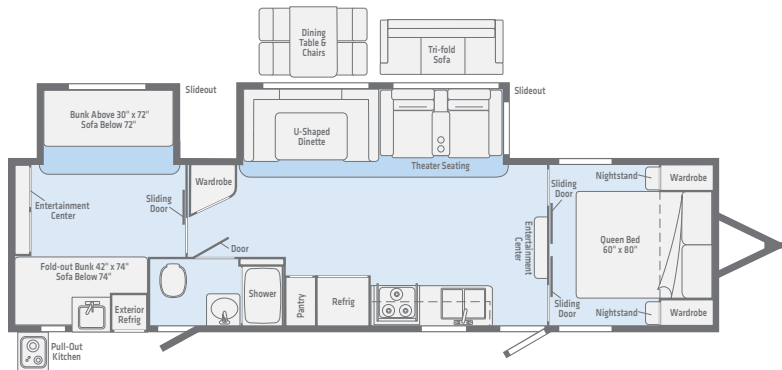
### 27RBDS



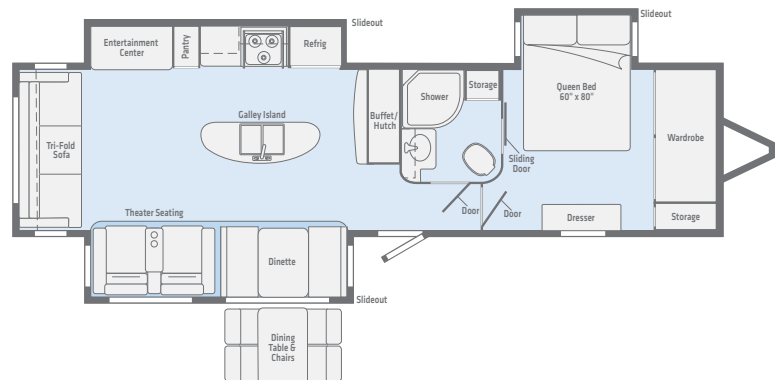
### 29DDBH



### 31BHDS



### 30RLSS



## Standard Features

- NXG Engineered Chassis
- Noble Classic High Gloss Fiberglass Sidewalls
- TPO Roof
- Painted Fiberglass Front Cap
- 15.0K BTU Roof Air
- Stainless Steel Microwave
- Stainless Steel Flush Mount Three Burner Range with Oven
- Solid Surface Counter Top
- Stainless Steel Galley and Lavvy Sinks
- AV System AM/FM/CD/DVD/USB/ Bluetooth
- USB Charging Ports
- 8 cu. ft. Double Door Gas Electric Refrigerator
- 10 Gallon Gas/Electric/DSI Water Heater
- TV Antenna w/ Booster
- LED TV
- Exterior Speakers
- Aluminum Wheel Assemblies
- Heated and Enclosed Tanks
- Power Awning with LED Lighting
- Power Stabilizing Jacks
- Power Tongue Jack
- Backup Camera Prep
- Solar Charger Prep
- Fold Out Solid Entrance Step
- Bathroom Power Maxx Air Vent Fan
- 50 Amp Service with 2nd A/C Prep
- In-Command (Preferred Option)
- LED Accent Lights
- Theater Seating

## Options

- 13.5K BTU 2nd Roof Air, Non-Ducted
- Extreme Weather Package
- Dual Pane Windows
- Sofa IPO Theater Seating (N/A 30RLSS)
- Secondary Awning (31BHDS Only)
- Fireplace w/ Remote
- Free Standing Table with 4 Chairs
- 32" LED TV Rear Bunk (31BHDS Only)
- TT Leveling Kit
- 32" LED TV in Bedroom
- 12V Residential Refrigerator

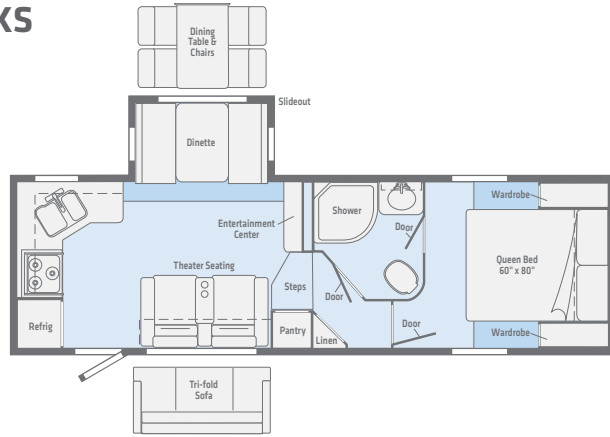


Interior photos are of the 29RBH floorplan with Pearl décor  
Exterior photo is of the 27RLTS

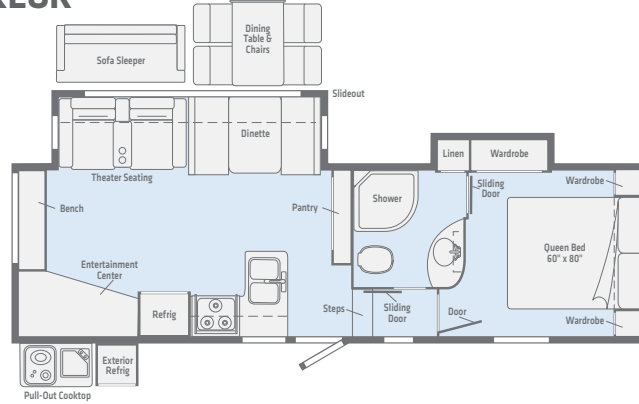
Minnie Plus  
5<sup>th</sup> Wheel

## Floorplans

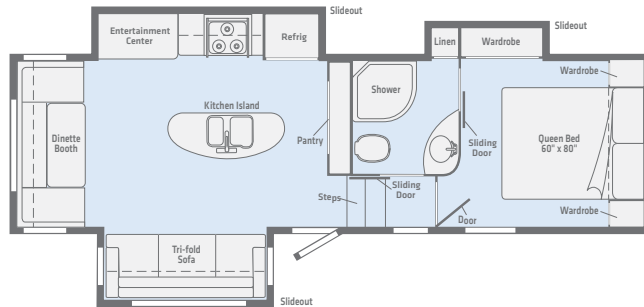
### 25RKS



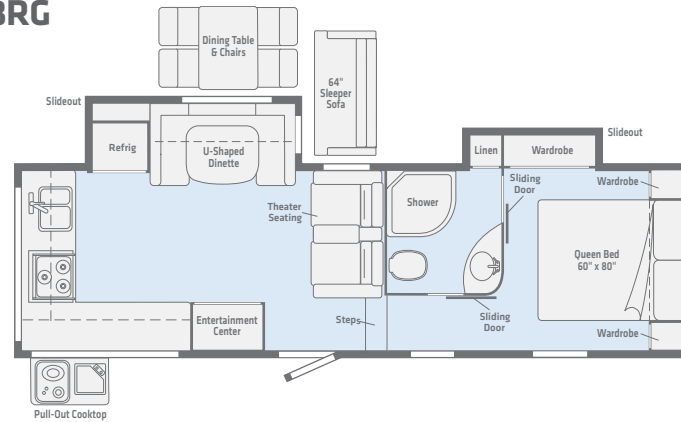
### 27REOK



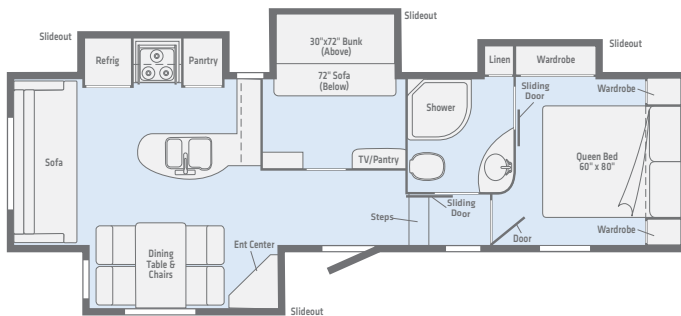
### 27RLTS



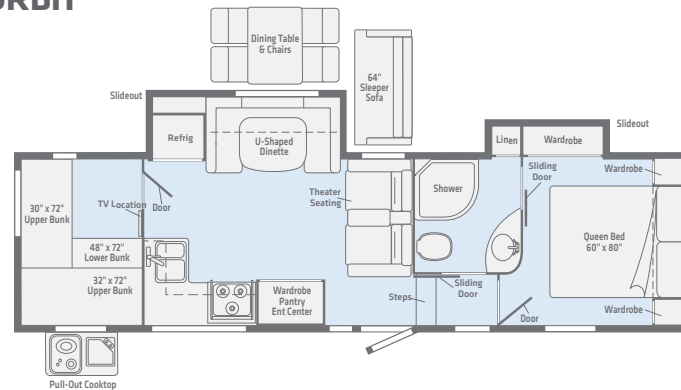
### 28RG



### 29MBH



### 29RBH



## Standard Features

- NXG Engineered Chassis
- Noble Classic High Gloss Fiberglass Sidewalls
- TPO Roof
- Painted Fiberglass Front Cap
- 15.0K BTU Roof Air
- Stainless Steel Microwave
- Stainless Steel Flush Mount Three Burner Range with Oven
- Solid Surface Counter top
- Stainless Steel Galley and Lavvy Sinks
- AV System AM/FM/CD/DVD/USB/ Bluetooth
- USB Charging Ports
- 8 cu. ft. Gas Electric Refrigerator with Stainless Inserts
- 10 Gallon Gas/Electric/DSI Water Heater
- TV Antenna w/ Booster
- LED TV
- Exterior Speakers
- Aluminum Wheel Assemblies
- Heated and Enclosed Tanks
- Power Awning w/ LED Lighting
- Power Stabilizing Jacks
- Backup Camera Prep
- Solar Charger Prep
- Fold Out Solid Entrance Step
- Kitchen Power Maxx Air Vent Fan
- In-Command (Preferred Option)
- Theater Seating

## Options

- 13.5K BTU 2nd A/C, Non-Ducted
- Extreme Weather Package
- Dual Pane Windows
- Sofa IPO Theater Seating (N/A 27RLTS, Req 29MBH)
- Fireplace w/ Remote (N/A 25RKS)
- Free Standing Table with 4 Chairs (N/A 27RLTS, Req 29MBH)
- 32" LED TV in Bedroom
- 32" TV in Bunkroom (29RBH, 29MBH only)
- Electric 4 Point Leveling
- 12V Residential Refrigerator

## Minnie Drop



	Exterior Length	Dry Weight (lbs)	Dry Hitch (lbs)	Exterior Height (With AC)	Exterior Width	Interior Height	GVWR	Fresh Water (Gal)	Black Tank Capacity (Gal)	Grey Tank Capacity (Gal)	LP Capacity (lbs)	Awning Length	Furnace (BTUs)	Water Heater
<b>170K</b>	19'	2,760	340	9' 11"	8' 0" / 6' 5"	6' 5"	4,000	31	25	25	20	7'	18,000	6
<b>170S</b>	21'	2,800	315	9' 11"	8' 0" / 6' 5"	6' 5"	4,000	31	25	25	20	10'	18,000	6
<b>185DB</b>	21'	2,980	330	9' 11"	8' 0" / 6' 5"	6' 5"	4,000	31	25	25	20	10'	18,000	6
<b>190BH</b>	21'	3,160	525	9' 11"	8' 0" / 6' 5"	6' 5"	4,000	31	25	25	20	7'	18,000	6
<b>210RBS</b>	25' 2"	4,080	520	10' 2"	8' 0" / 6' 5"	6' 5"	7,400	43	25	41	20	10'	18,000	6

## Micro Minnie



<b>1706FB</b>	19' 2"	2,980	300	10'	7' 0"	6' 4"	7,000	31	25	25	40	10'	18,000	6
<b>1808FBS</b>	20' 0"	3,560	390	10'	7' 0"	6' 4"	7,000	31	25	25	40	10'	18,000	6
<b>1700BH</b>	20' 9"	3,010	380	10'	7' 0"	6' 4"	4,000	31	25	25	40	12'	18,000	6
<b>2100BH</b>	21' 11"	3,760	430	10'	7' 0"	6' 4"	7,000	31	25	25	40	13'	18,000	6
<b>2106FBS</b>	21' 11"	3,705	360	10'	7' 0"	6' 4"	7,000	31	25	25	40	13'	18,000	6
<b>2106DS</b>	21' 11"	3,705	360	10'	7' 0"	6' 4"	7,000	31	25	25	40	13'	18,000	6
<b>2108DS</b>	22' 5"	3,900	410	10'	7' 0"	6' 4"	7,000	31	25	25	40	12'	18,000	6
<b>2108FBS</b>	22' 5"	3,900	410	10'	7' 0"	6' 4"	7,000	31	25	25	40	12'	18,000	6
<b>2108TB</b>	22' 5"	3,950	435	10'	7' 0"	6' 4"	7,000	31	25	25	40	12'	18,000	6
<b>2306BHS</b>	25' 5"	4,260	495	10'	7' 0"	6' 4"	7,000	31	25	25	40	15'	18,000	6

## Micro Minnie 5<sup>th</sup> Wheel



<b>2405BH</b>	26' 9"	TBD	TBD	11' 3"	7' 0"	7' 0"	7,700	31	25	25	60	18'	18,000	6
<b>2405BHDB</b>	26' 9"	TBD	TBD	11' 3"	7' 0"	7' 0"	7,700	31	50	50	60	18'	18,000	6
<b>2405RB</b>	26' 9"	TBD	TBD	11' 3"	7' 0"	7' 0"	7,700	31	TBD	TBD	60	18'	18,000	6
<b>2405RG</b>	26' 9"	5,780	1,060	11' 3"	7' 0"	7' 0"	7,700	31	25	50	60	18'	18,000	6
<b>2405RL</b>	26' 9"	5,640	1,100	11' 3"	7' 0"	7' 0"	7,700	31	25	25	60	18'	18,000	6



## Minnie



	Exterior Length	Dry Weight (lbs)	Dry Hitch (lbs)	Exterior Height (With AC)	Exterior Width	Interior Height	GVWR	Fresh Water (Gal)	Black Tank Capacity (Gal)	Grey Tank Capacity (Gal)	LP Capacity (lbs)	Awning Length	Furnace (BTUs)	Water Heater
<b>2201DS</b>	26' 9"	4,900	575	10' 6"	8' 0"	6' 5"	7,000	37	25	41	40	19'	25,000	6
<b>2201MB</b>	26' 9"	4,900	575	10' 6"	8' 0"	6' 5"	7,000	37	25	41	40	19'	25,000	6
<b>2401RG</b>	27' 11"	5,220	650	10' 6"	8' 0"	6' 5"	7,000	37	25	2 @ 25	40	15'	25,000	6
<b>2455BHS</b>	27' 11"	5,320	660	10' 6"	8' 0"	6' 5"	7,000	37	25	41	40	19'	25,000	6
<b>2500FL</b>	27' 11"	5,230	575	10' 6"	8' 0"	6' 5"	7,000	37	25	41	40	18'	25,000	6
<b>2500RL</b>	27' 11"	5,160	695	10' 6"	8' 0"	6' 5"	7,000	37	25	41	40	20'	25,000	6
<b>2801BHS</b>	32' 5"	TBD	TBD	TBD	8' 0"	6' 5"	8,800	43	25	66	40	21'	30,000	6

## Minnie Plus



<b>26RBSS</b>	29' 6"	6,280	740	10' 10"	8' 0"	6' 8 1/2"	9,995	50	28	69	60	17'	30,000	10
<b>27BHSS</b>	31' 4"	6,620	760	10' 10"	8' 0"	6' 8 1/2"	9,995	50	28	69	60	20'	30,000	10
<b>27RBDS</b>	30' 7"	7,020	880	10' 10"	8' 0"	6' 8 1/2"	9,995	50	28	69	60	20'	30,000	10
<b>29DDBH</b>	33' 9"	7,520	840	10' 10"	8' 0"	6' 8 1/2"	9,995	50	28	69	60	20'	30,000	10
<b>31BHDS</b>	35' 6"	7,440	860	10' 10"	8' 0"	6' 8 1/2"	9,995	50	28	69	60	20'	30,000	10
<b>30RLSS</b>	36' 11"	8,860	1,020	10' 10"	8' 0"	6' 8 1/2"	9,995	50	41	41	60	20'	30,000	10

## Minnie Plus 5<sup>th</sup> Wheel



<b>25RKS</b>	27' 3"	7,220	820	11' 11"	8' 0"	7' 11"	9,995	50	25	51	60	17'	30,000	10
<b>27REOK</b>	29' 6"	8,060	1,820	11' 11"	8' 0"	7' 11"	9,995	50	41	69	60	14'	30,000	10
<b>28RG</b>	29' 6"	TBD	TBD	11' 11"	8' 0"	7' 11"	9,995	50	41	82	60	17'	30,000	10
<b>27RLTS</b>	29' 8"	8,340	1,320	11' 11"	8' 0"	7' 11"	9,995	50	41	41	60	12'	30,000	10
<b>29MBH</b>	33' 8"	TBD	TBD	11' 11"	8' 0"	7' 11"	9,995	50	41	41	60	17'	30,000	10
<b>29RBH</b>	33' 9"	8,895	1,495	11' 11"	8' 0"	7' 11"	9,995	50	41	82	60	19'	30,000	10

Look for the Winnebago bear stickers on the door-side of your towable to easily identify which features are included on your unit.



Winnebago's Extreme Weather Package is made up of 2 types of Radiant Technology Reflective Insulation.

These highly engineered materials do not absorb heat, but instead reflect heat from both sides.

This means in the winter any heat generated within the interior of the unit is contained for the warmest interior possible. In the summer, heat is deflected from entering the interior of the unit allowing the air conditioner to cool more efficiently.

An option on Micro Minnie, Micro Minnie 5th Wheel, Minnie, Minnie Plus & Minnie Plus 5<sup>th</sup> Wheel.



Winnebago's Off-Road Package includes larger, 15" off-road tires, and a lifted axle—giving you additional ground clearance to explore the open road.

An option on Minnie Drop, Micro Minnie, & Micro Minnie 5<sup>th</sup> Wheel.



Heated & Enclosed Tanks extend your camping season by moving heated air into an enclosed space.

Holding tanks are contained by a corrugated plastic underbelly which is sealed with a layer of thermo-foil.

Standard on Micro Minnie, Micro Minnie 5<sup>th</sup> Wheel, Minnie, Minnie Plus, & Minnie Plus 5<sup>th</sup> Wheel.

Each Winnebago Minnie is expertly manufactured with these key features:

BAL Engineered Chassis designed with industry leading strength to weight ratio, rust protection, and durability. Non-welded chassis secured with automotive huck bolts.



Welded aluminum tube sidewall construction with solid material inserts in areas where screws will be added to hold attachments.

Exterior grade tongue and groove plywood flooring securely fastened to aluminum floor supports provide for a superior foundation for cabinets and furniture.



Our Noble Classic high gloss fiberglass sidewalls are manufactured with the supporting underlayment imbedded to the resin for a superior bond. This is the same process we use on our prestigious motor homes.

And all are available in these great colors!



Royal Blue

Champagne

Cherry

Hunter

Platinum

White

Andrew Warren  
2019 Photo Contest Winner



Brandon Robins  
2019 Photo Contest Winner



[www.witclub.com](http://www.witclub.com)



Have a question  
about the Minnie Family?  
Email [SalesW01@WGO.net](mailto:SalesW01@WGO.net).

## 60 Years as the Premier Outdoor Lifestyle Company

In the early spring of 1958, the doors of a new factory in Forest City, Iowa, swung open as a brand new 15-foot Aljo travel trailer rolled out into the afternoon sun. That day marked not only the launch of a new RV, but the beginning of a new era—for Americans rediscovering their love of the outdoors, and for the company destined to help lead the way: Winnebago. Now manufactured in Middlebury, Indiana, Winnebago's travel trailers and 5<sup>th</sup> Wheels maintain the legendary construction standards which made 'Winnebago' a household name.

# WINNEBAGO

**Winnebago of Indiana**

201 14th Street  
Middlebury, IN 46540 (574) 825-5250

[www.winnebagoind.com](http://www.winnebagoind.com)

Your Winnebago Dealer

