

# BACKPACK

TRUCK CAMPERS



EXPLORE THE GREAT OUTDOORS.

HARD SIDE

HARD SIDE MAX

CONSTRUCTION

POPULAR FEATURES



## SS 500



DESIGNED FOR COMPACT TRUCKS

## SS 550



1/2 TON TRUCK W/5'6" UP TO 8' BED

## SS 1200



1/2 TON TRUCK W/ 6'6" UP TO 8' BED

# BACKPACK **SOFT-SIDE**

No matter the size of your truck, we have a soft-side truck camper perfect for you. Thanks to the electric lift you can easily set up your camper without hand-cranking the top up or down. And with the optional remote, it works with just a push of a button. Plus, our 55" one-piece door makes it that much easier to enter and exit the camper, compared to our competition's 46" or 47" door. The soft-side series comes in a white or grey gel coat exterior.

## SS 1251



1/2 TON TRUCK 6'6" BED W/OVERHANG

## SS 1240



1/2 TON TRUCK W/ 6'6" UP TO 8' BED

## SS 1500



1/2 TON TRUCK W/ 8' BED

SPECIFICATIONS	SS 500	SS 550	SS 1200	SS 1251	SS 1240	SS 1500
TOTAL EXTERIOR LENGTH (INCL. LADDER)	12'8"	13'5"	12'10"	14'10"	14'10"	14'4"
TOTAL EXTERIOR WIDTH	6'4"	7'2"	7'2"	7'2"	7'2"	7'2"
FLOOR LENGTH	6'	7'	8'	8'6"	8'6"	9'6"
WHEEL WELL WIDTH	40"	46.5"	46.5"	46.5"	46.5"	46.5"
EXTERIOR HEIGHT WHEN CLOSED	6'	6'	6'	6'	6'	6'
INTERIOR HEIGHT	7'	7'	7'	7'	7'	7'
DRY WEIGHT (LBS.)	1197	1594	1591	1795	1876	1910
FRESH WATER CAPACITY (GALS)	9	15	15	15	15	15
BLACK WATER CAPACITY (GALS)	NA	NA	NA	7	7	7
GRAY WATER CAPACITY (GALS)	NA	NA	NA	NA	NA	NA
LP GAS CAPACITY	20	20	20	20	20	30
CAB OVER BED SIZE	66"x75"	60"x80"	60"x80"	60"x80"	60"x80"	60"x80"
DINETTE BED SIZE	36"x73"	36"x90"	36"x72"	36"x62"	36"x72"	36"x72"
CENTER OF GRAVITY **	22"	22"	39"	37"	37"	45"

\* Palomino strongly recommends you check your trucks owners manual or contact the manufacturer for your trucks capabilities.

\*\* The center of gravity measurement is as built. Your options and loading on the truck may adjust this measurement.





SS 500  
IN MESA MAPLE







HS 8801  
IN MESA MAPLE

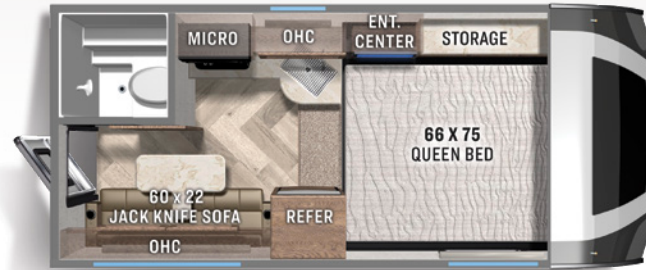


## HS 690



1/2 TON TRUCK W/ 5' UP TO 8' BED

## HS 750



1/2 TON TRUCK W/ 5'6" UP TO 8' BED

## HS 8801



3/4 TON TRUCK W/ 6' 6" UP TO 8' BED

## BACKPACK HARD-SIDE

Our lightweight, hard-side truck campers are packed with great features and keep a lighter payload, thanks to the fully aluminum welded frame. We've redesigned the interior to provide greater cabinet storage, and upgraded frameless windows. Our campers fit multiple truck sizes so check page 9 to find your favorite floorplan.



SPECIFICATIONS	HS 690	HS 750	HS 8801
TOTAL EXTERIOR LENGTH (INCL. LADDER)	12'9"	16'5"	18'
TOTAL EXTERIOR WIDTH	7'2"	7'2"	7'10"
FLOOR LENGTH	6'6"	8'2"	9'
WHEEL WELL WIDTH	48"	48"	48"
EXTERIOR HEIGHT WITH LADDER	7'11"	7'11"	8'4"
INTERIOR HEIGHT	6'6"	6'6"	6'11"
DRY WEIGHT (LBS.)	1561	1870	2460
FRESH WATER CAPACITY (GALS)	8	21	21
BLACK WATER CAPACITY (GALS)	NA	8	8
GRAY WATER CAPACITY (GALS)	NA	8	7
LP GAS CAPACITY	20	20	2-20
CAB OVER BED SIZE	60"x80"	60"x80"	60"x80"
DINETTE / SOFA BED SIZE	28"x82"	32"x60"	32"x60"
CENTER OF GRAVITY **	23"	27"	42"

\* Palomino strongly recommends you check your trucks owners manual or contact the manufacturer for your trucks capabilities.

\*\* The center of gravity measurement is as built. Your options and loading on the truck may adjust this measurement.

## HS 2901



3/4 TON TRUCK W/ 6'6" UP TO 8' BED

## HS 2902



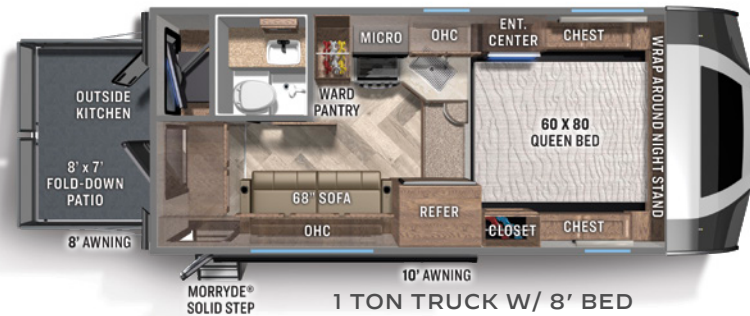
3/4 TON TRUCK W/ 6'6" UP TO 8' BED

## HS 2910



1 TON TRUCK W/ 8' BED

## HS 2912



1 TON TRUCK W/ 8' BED

# BACKPACK HARD-SIDE MAX

Our Hard Side Max series is our premium product. With the insulated, frameless windows and heated basement, this camper is ready for adventure. Our exclusive front cap windshield opens the expansive living space with light and creates an inviting atmosphere.

SPECIFICATIONS	HS 2901	HS 2902	HS 2910	HS 2912
TOTAL EXTERIOR LENGTH (INCL. LADDER)	18'4"	18'4"	19'3"	20'
TOTAL EXTERIOR WIDTH	8'2"	8'2"	8'2"	8'2"
FLOOR LENGTH	9'	9'	10'	10'8"
WHEEL WELL WIDTH	48"	48"	48"	48"
EXTERIOR HEIGHT WITH LADDER	9'9"	9'9"	9'9"	9'9"
INTERIOR HEIGHT	6'8"	6'8"	6'8"	6'8"
DRY WEIGHT (LBS.)	3037	3261	3493	3572
FRESH WATER CAPACITY (GALS)	45	45	45	45
BLACK WATER CAPACITY (GALS)	20	20	20	20
GRAY WATER CAPACITY (GALS)	20	20	20	20
LP GAS CAPACITY	30	30	30	30
CAB OVER BED SIZE	60" x 80"	60" x 80"	60" x 80"	60" x 80"
DINETTE / SOFA BED SIZE	24" x 63"	40" x 62"	43" x 69"	43" x 68"
CENTER OF GRAVITY **	37"	37"	46"	53"

\* Palomino strongly recommends you check your trucks owners manual or contact the manufacturer for your trucks capabilities.

\*\* The center of gravity measurement is as built. Your options and loading on the truck may adjust this measurement.





HS 2912  
IN MESA MAPLE



HARD SIDE MAX





## BACKPACK CONSTRUCTION

All Palomino truck campers are aluminum framed with laminated construction to offer a light weight yet durable product at a price you can afford.

- 1 White or grey gel coat exterior
- 2 High Density Block Foam Insulation
- 3 Alpha Super Flex Membrane Roof
- 4 Plywood Substrate
- 5 Decorative Wall Board
- 6 Aluminum Framing-Fully Welded Super Structure
- 7 Heated Insulated basement - Max Series



# BACKPACK STANDARDS & OPTIONS

## STANDARD FEATURES

- LED Interior Lighting
- Vented Battery Box (2 Std. on all Models Except 500)
- Battery Quick Disconnect
- Exterior Battery Charging Station
- Aluminum Frame
- Ball Bearing Drawer Guides
- Integrated Bumper (Std on MAX Series only)
- White High Gloss Fiberglass
- Laminated Walkable Roof (Hard Side Only)
- Congoleum® Flooring
- White High Gloss Fiberglass

- Mortise and Tenon Hard Wood Cabinets
- Pocket Screw Lumber Core Cabinet Stiles
- 55" One-Piece Door (Soft Side Only)
- Solar Prep

## COMMONLY ORDERED OPTIONS

- Air Conditioning
- Grey Hi-Gloss Exterior Fiberglass
- Entry Step
- Microwave (N/A on 690) (HS only)
- Side Awning w/LED Lights (HS only)

- Rear Awning (Hard Sides Only, N/A on 690 and 750)
- Badlands Package (N/A on MAX Series and 8801)
- Essential Package (2912 Only)
- Solar Panel
- Electric jacks
- TV (HS only)
- Thule Roof Rack (N/A on MAX Series and 8801)
- Rear Bumper (N/A on 690 and 750)

\* See our website for a complete list of available options

## BADLANDS PACKAGE





(N/A ON MAX SERIES  
AND 1806)

- THULE (R) ROOF RACK
- 100 WATT SOLAR PANEL WITH CHARGE CONTROLLER
- EXTRA BATTERY TRAY

## ESSENTIAL PACKAGE

(STANDARD ON  
2912 ONLY)

- SOLID SURFACE COUNTER TOPS
- SUNDECK
- REAR AND SIDE AWNING
- OUTSIDE KITCHEN / ENTERTAINMENT CENTER (INCLUDES 32" TV, 3 CU FT REFRIGERATOR)
- MORRYDE® STEP ABOVE ENTRY STEP

	HS 690 - 1/2 TON 5' OR LARGER BED	HS-750 - 5'6" TO 8' BED	
	SS-1240 - 6' 6" OR 8' BED	HS-2901 - 6' 6" OR 8' BED	
	SS-1251 - 6' 6"	HS-2902 - 6' 6" OR 8' BED	
	BED SS-1200 - 6' 6" OR 8' BED	HS-8801 - 6' 6" OR 8' BED	HS-2910 - 8' BED
SS 500 - 5' OR LARGER BED	SS-550 - 5' OR LARGER BED	SS-1500 - 8' BED	HS-2912 - 8' BED
			
<b>COMPACT TRUCK</b> CHEVROLET® COLORADO™ / TOYOTA® TACOMA™	<b>1/2 TON, F-150/1500</b>	<b>3/4 TON, F-250/2500</b>	<b>1 TON, F-350/3500</b>

\* Palomino strongly recommends you check your trucks owners manual or contact the manufacturer for your trucks capabilities.

\*\* The center of gravity measurement is as built. Your options and loading on the truck may adjust this measurement.



# BACKPACK POPULAR FEATURES

## CAMPING POSITION



## TRAVEL POSITION



## HANGING STORAGE

Our new hanging pantry provides you with almost 100% more storage than the upper cabinets they replace! They are also portable so loading and unloading them is now so much more convenient.

## ROOF LIFT SYSTEM

Newly designed electric roof lift system has been extensively tested to provide great reliability and is mounted on the outside of the unit for ease of maintenance and to free up valuable space inside your camper.



## OPTIONAL ROOF RACK

Our optional roof rack system provides numerous options for you to take your outdoor toys along with you when you travel. They are rated to hold up to 300 lbs and can be used with the roof in the upright position. (Roof rack n/a on 8801 and MAX models.)





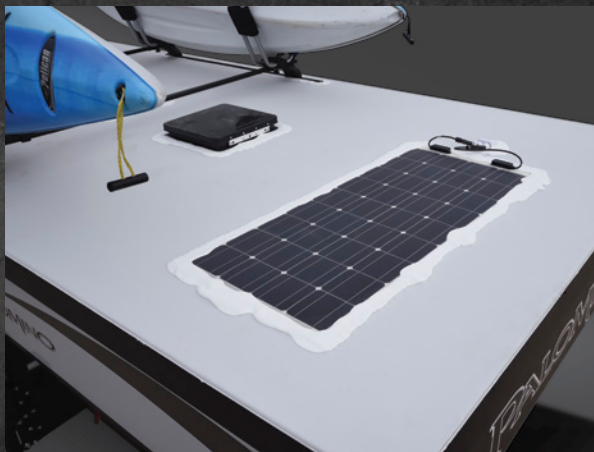
### SPACIOUS PARTY DECK

An industry-first, the HS 2912 boasts a full fold-down 8' x 7' party deck patio with a 32" TV and small refrigerator.



### FIBERGLASS FRONT CAP

Our fiberglass front cap has a fully integrated windshield. Palomino RV partnered with the leaders in O.E. Automotive Windshield Manufacturing Guardian Industries as well as Dow Chemicals to create this Palomino Exclusive Feature. This automotive style windshield not only looks great rolling down the road, but also creates an open inviting environment in the Palomino Hard Side Max Cabover Bunks while you enjoy great panoramic views.



### OPTIONAL SOLAR PANEL

Our optional solar panel provides 100 watts of charging power that helps you keep your battery system charged for extended adventures.



### CHARGING PORT

Allows you to charge or maintain your on-board battery with ease from the exterior of your Palomino Camper.



### SOLAR CHARGE CONTROLLER

Our optional solar charge controller makes it easy for you to monitor your on-board battery system.



CUSTOMER SATISFACTION

**FOREST RIVER**  
encourages you to

**BUY LOCAL**



PREFERENTIAL SERVICE

PRODUCT INFORMATION

[www.ForestRiverBuyLocal.com](http://www.ForestRiverBuyLocal.com)



**PRE-DELIVERY INSPECTION FACILITY**

20,000 square feet of quality assurance. The bare essentials for a premium product. This state-of-the-art facility gives immediate daily feedback to production for quality assurance in every unit built.

**Specification Definitions**

**GVWR (Gross Vehicle Weight Rating)** - is the maximum permissible weight of the unit when fully loaded. It includes all weights, inclusive of all fluids, cargo, optional equipment and accessories. For safety and product performance do NOT exceed the GVWR.

**GAWR (Gross Axle Weight Rating)** - is the maximum permissible weight, including cargo, fluids, optional equipment and accessories that can be safely supported by a combination of all axles.

**UVW (Unloaded Vehicle Weight)\*** - is the typical weight of the unit as manufactured at the factory. It includes all weight at the unit's axle(s) and tongue or pin and LP Gas. The UVW does not include cargo, fresh potable water, additional optional equipment or dealer installed accessories.

\*Estimated average based on standard build optional equipment.

**CCC (Cargo Carrying Capacity)\*\*** - is the amount of weight available for fresh potable water, cargo, additional optional equipment and accessories. CCC is equal to GVWR minus UVW. Available CCC should accommodate fresh potable water (8.3 lbs per gallon). Before filling the fresh water tank, empty the black and gray tanks to provide for more cargo capacity.

\*\* Estimated average based on standard build optional equipment

Each Forest River RV is weighed at the manufacturing facility prior to shipping. A label identifying the unloaded vehicle weight of the actual unit and the cargo carrying capacity is applied to every Forest River RV prior to leaving our facilities.

The load capacity of your unit is designated by weight, not by volume, so you cannot necessarily use all available space when loading your unit.

**BACKPACK WARRANTY**

Palomino will stand behind our products 100%. For complete details on our warranty program, please see your Palomino dealer.

- 1 2-year fiberglass warranty
- 2 Lifetime Alpha Super Flex roof warranty
- 3 2-3 year warranty on appliances (See manual for details)
- 4 1 year bumper to bumper warranty



**Learn More**

Scan this barcode using a QR Reader on your smart phone to learn more about Forest River.



**PALOMINO**

1047 East M-86 | Colon, MI 49040  
P: 269.432.3271 | F: 269.432.2516  
[www.palominoRV.com](http://www.palominoRV.com)

A Berkshire Hathaway company.

**YOUR BACKPACK DEALER**

**24/7 EMERGENCY  
ROADSIDE ASSISTANCE  
WITH VEHICLE PURCHASE\***

TOWING  
JUMP-STARTS  
TIRE CHANGES  
FLUID DELIVERY  
LOCKOUT  
SERVICE

WINCH-OUT  
MOBILE MECHANIC  
TECHNICAL  
SUPPORT  
DEALER LOCATOR  
SERVICES



\*VALID FOR 1 YEAR FROM DATE OF PURCHASE

All information contained in this brochure is believed to be accurate at the time of publication. However, during the model year, it may be necessary to make revisions and Forest River, Inc., reserves the right to make all such changes without notice, including prices, colors, materials, equipment and specifications as well as the addition of new models and the discontinuance of models shown in this brochure. Therefore, please consult with your Forest River, Inc., dealer and confirm the existence of any materials, design or specifications that are material to your purchase decision. Litho. U.S.A. FOR 2910 P/W: 2022.01.26