



Della Terra

TRAVEL TRAILERS



Della Terra

TRAVEL TRAILERS

EastToWestRV.com/DellaTerra

A DIVISION OF FOREST RIVER





Della Terra 312 BH

(Features Our Silver Birch Interior, Designer Countertops, Stainless Steel Appliances, High Rise Faucet & Undermount Farmhouse Sink)



Bathroom
(Porcelain Toilet Standard)



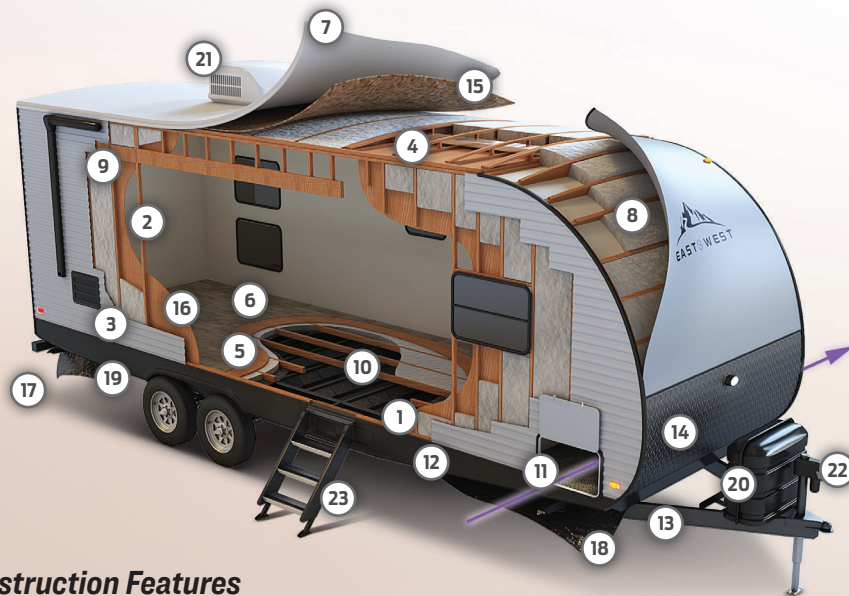
King Size Bed
(Standard in All Models)



Kitchen



Bunk Room



Construction Features

- | | | | |
|---|--|--|--|
| 1 2" x 3" Floor Joists 12" on Center | 8 R-7 Fiberglass Insulation Throughout | 15 3/8" Roof Decking (Full Walk-On Roof) | 21 15,000 BTU Ducted Roof, High Output A/C with Quick Cool |
| 2 2" Wall Construction on a 16" Center | 9 13 Ply Cross Micro-Laminated Beam Header Above Slide Out | 16 One Piece Linoleum Flooring | 22 Electric Power Tongue Jack with LED Light |
| 3 Aluminum Siding | 10 Chambered Chassis | 17 Tinted Safety Glass Windows | 23 MORryde StepAbove® Triple Entry Solid Step |
| 4 5" Bowed Truss Roof Rafter | 11 Fully Finished Pass-Thru Storage | 18 Fully Enclosed & Heated Underbelly with Anti-Puncture Underbelly Wrap | |
| 5 5/8" Tongue & Groove Plywood Floor Decking | 12 Smooth Metal Skirting | 19 Enclosed Tanks | |
| 6 One-Piece Congoleum® Linoleum Flooring | 13 Automotive Deposition Coated Frame | 20 LP Bottle Cover With Easy Access | |
| 7 One-Piece Seamless DIFlex II™ Roof (12 Year Manufacturer Defect Warranty) | 14 Diamond Plate Rock Guard | | |

* EQUIVALENT THERMAL RESISTANCE, R-VALUE



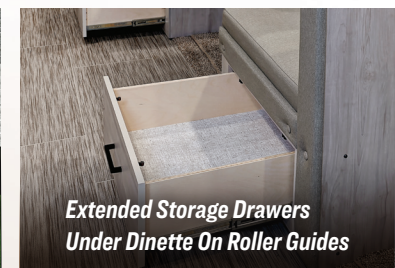
31" Electric Fireplace
(Built-in Option for all Slide Models)



Universal Docking Station & Fully Finished Pass-Thru Storage



Outside Kitchen
(Optional on Some Models)



Extended Storage Drawers Under Dinette On Roller Guides



Power Tongue Jack with LED Light



MORryde StepAbove® Triple Entry Solid Step

Della Terra Standards & Options

Interior Features

- ▶ Mortise And Tenon Shaker Style Cabinets
- ▶ 12-Volt Exhaust Fan and Light
- ▶ Shelving In Overhead Kitchen Cabinets
- ▶ Wood Drawers with Furniture Grade Plywood Sides
- ▶ TV & Cable Prep in Living Room and Bedroom
- ▶ Furnace w/ Digital Thermostat
- ▶ 35k BTU Furnace
- ▶ Strut Lifted Storage Under King Bed
- ▶ Increased Foot Space at The Foot of Bed
- ▶ Solid Bedroom Privacy Doors

Security & Safety Features

- ▶ LP Leak, Smoke & Carbon Monoxide Detectors
- ▶ Fire Extinguisher
- ▶ Welded Heavy Duty Safety Chains
- ▶ Electric Brakes (All Wheels)
- ▶ GFCI Receptacles
- ▶ ANSI 119.2 Certified
- ▶ Meets all National Highway Administrative Specifications
- ▶ RVIA Approved Product

Explore Comfort Package

- ▶ 81" Interior Ceiling Height
- ▶ 10.7' Cubic Foot Stainless Steel Refrigerator
- ▶ Solid Bedroom Door W/A
- ▶ Cable/Satellite Ready
- ▶ USB Charging Stations (Beds, Bunks, & Tables W/A)
- ▶ 3-Burner Range W/ Glass Cover & Oven
- ▶ 48" Dinette W/A With Pullout Storage Drawers On Roller Guides
- ▶ 31" Built In Fireplace (261RB, 271BH, 291RK, 291BH, 292MK, 312BH, 323QB)
- ▶ Porcelain Foot Flush Toilet
- ▶ Interior LED Lights
- ▶ Window Valance Package With Black Night Shades
- ▶ Seamless Designer Countertops
- ▶ 2 Zone Sound System With Bluetooth & HDMI Connectivity
- ▶ 35,000 BTU Furnace
- ▶ Extra Large Dinette Picture Windows
- ▶ Upgraded Congoleum® Designer Linoleum Flooring
- ▶ Marine Grade Woven PVC Flooring In Slide-Outs *No Carpet*

Adventure Outdoor Package

- ▶ Universal Docking Station with Battery Disconnect
- ▶ Water Heater Bypass
- ▶ ABS Tub Surround
- ▶ Radial Tires
- ▶ Fender Skirt
- ▶ Power Awning with LED Lights
- ▶ Outside Shower with Hot & Cold Water
- ▶ Winegard® Air 360+ HDTV Antenna WiFi Prep 4G LTE Prep
- ▶ Backup Camera Prep
- ▶ MORryde® Solid Step Above Entrance Triple Step
- ▶ True Solar Prep Roof Mounted MC4 with Pre Wire
- ▶ Black Tank Flush
- ▶ Exterior LED Lights
- ▶ Detachable Power Cord
- ▶ Power Tongue Jack with LED Light
- ▶ Oversized Exterior Swing Arm Entry Assist Handle
- ▶ Stabilizer Jacks
- ▶ Two Marine Grade Exterior Speakers
- ▶ Tinted Windows
- ▶ Upper Bunk Window
- ▶ R.V.Q. Quick Disconnect W/A

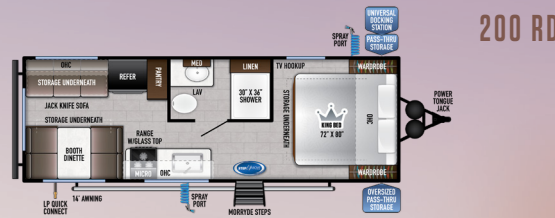
Mandatory Options

- ▶ King Bed - 72" X 80"
- ▶ Enclosed & Heated Underbelly
- ▶ Enclosed Holding Tanks
- ▶ Electric Flush Floor Slide Outs W/A
- ▶ 15,000 BTU Ducted Air Conditioner with Quick Cool
- ▶ Upgraded Interior Design Package

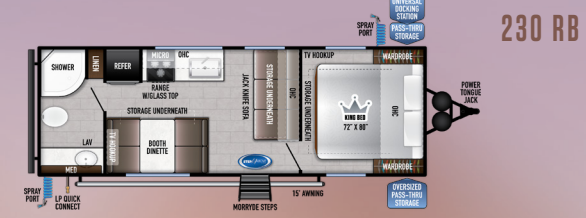
Options

- ▶ Goodyear® Tires (Mandatory All Models)
 - ▶ Goodyear® Spare Tire & Carrier
 - ▶ Upgraded Aluminum Rim Package
 - ▶ Electric Stabilizer Jacks
 - ▶ 60" X 80" Queen Bed
 - ▶ Theater Seating (Slide Models)
 - ▶ Tri-Fold Sofa
 - ▶ Large 40" LED TV With Bracket
 - ▶ Medium 32" LED TV with Bracket
 - ▶ 50 Amp Service with 2nd Air Prep
 - ▶ 50 Amp Service 2nd Air
 - ▶ Outside Kitchen*
- Available on The Following:
250BH, 271BH, 291BH, 312BH, 323QB

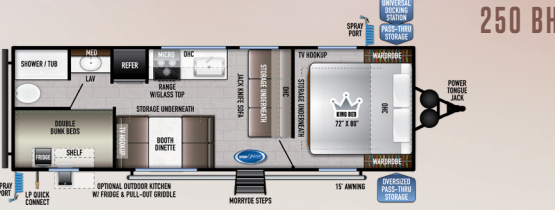
*W/A: Where Applicable



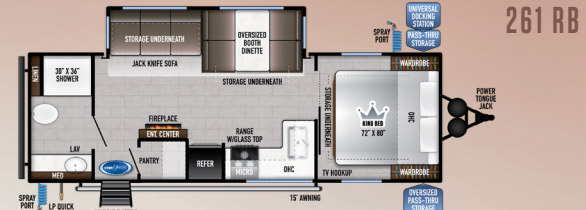
DRY HITCH (LBS.): 575 UVV (LBS.): 5,418 CCC (LBS.): 2,157 LENGTH W/ HITCH: 28' 2"
EXTERIOR HEIGHT: 10' 10" WIDTH: 96" TANKS (F/G/B): 40 / 30 / 30 AWNING: 14'



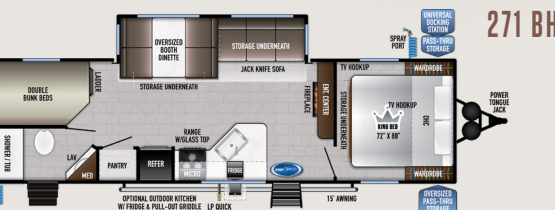
DRY HITCH (LBS.): 565 UVV (LBS.): 4,976 CCC (LBS.): 2,589 LENGTH W/ HITCH: 28' 1"
EXTERIOR HEIGHT: 10' 10" WIDTH: 96" TANKS (F/G/B): 40 / 30 / 30 AWNING: 15'



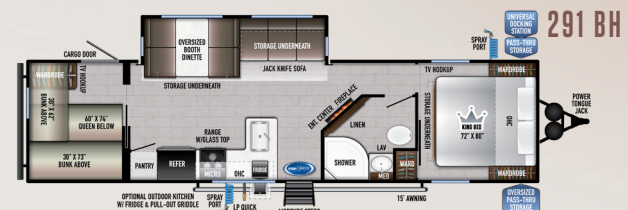
DRY HITCH (LBS.): 715 UVV (LBS.): 5,319 CCC (LBS.): 2,396 LENGTH W/ HITCH: 31' 1"
EXTERIOR HEIGHT: 10' 10" WIDTH: 96" TANKS (F/G/B): 40 / 30 / 30 AWNING: 15'



DRY HITCH (LBS.): 775 UVV (LBS.): 6,473 CCC (LBS.): 3,102 LENGTH W/ HITCH: 30' 6"
EXTERIOR HEIGHT: 11' 2" WIDTH: 96" TANKS (F/G/B): 40 / 60 / 30 AWNING: 15'



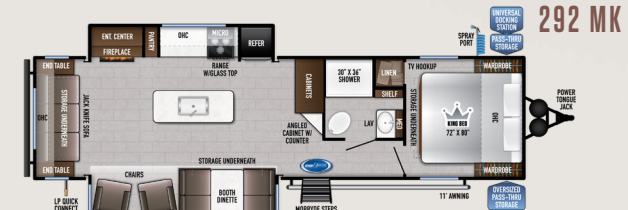
DRY HITCH (LBS.): 785 UVV (LBS.): 6,835 CCC (LBS.): 2,750 LENGTH W/ HITCH: 34' 4"
EXTERIOR HEIGHT: 11' 0" WIDTH: 96" TANKS (F/G/B): 40 / 60 / 30 AWNING: 15'



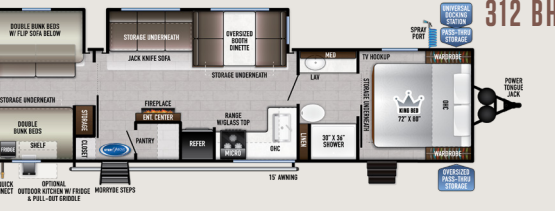
DRY HITCH (LBS.): 1,190 UVV (LBS.): 8,328 CCC (LBS.): 1,662 LENGTH W/ HITCH: 37' 8"
EXTERIOR HEIGHT: 11' 3" WIDTH: 96" TANKS (F/G/B): 40 / 60 / 30 AWNING: 15'



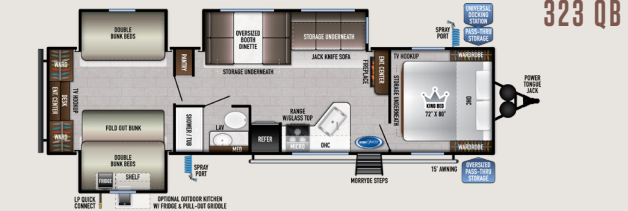
DRY HITCH (LBS.): 809 UVV (LBS.): 6,835 CCC (LBS.): 2,774 LENGTH W/ HITCH: 34' 4"
EXTERIOR HEIGHT: 11' 2" WIDTH: 96" TANKS (F/G/B): 40 / 60 / 30 AWNING: 15'



DRY HITCH (LBS.): 1,063 UVV (LBS.): 7,407 CCC (LBS.): 2,456 LENGTH W/ HITCH: 36' 1"
EXTERIOR HEIGHT: 11' 3" WIDTH: 96" TANKS (F/G/B): 40 / 60 / 30 AWNING: 11'



DRY HITCH (LBS.): 935 UVV (LBS.): 8,623 CCC (LBS.): 2,712 LENGTH W/ HITCH: 38' 0"
EXTERIOR HEIGHT: 11' 3" WIDTH: 96" TANKS (F/G/B): 40 / 60 / 30 AWNING: 15'



DRY HITCH (LBS.): 896 UVV (LBS.): 8,745 CCC (LBS.): 2,351 LENGTH W/ HITCH: 37' 5"
EXTERIOR HEIGHT: 11' 3" WIDTH: 96" TANKS (F/G/B): 40 / 60 / 30 AWNING: 15'



OUR COMPANY TAKES PRIDE IN OUR FIVE GUIDING PRINCIPLES AND OUR CORPORATE PHILOSOPHY
 which focuses on people working together to create high quality, value-added products that deliver the ultimate RV experience.

Sustainable Manufacturing

An important objective to our strategy and operations is to implement economically sound manufacturing processes to reduce/ recycle waste & conserve energy and natural resources.

Corporate & Social Responsibility

We foster a business environment in which we focus on and practice:

- Ethical Labor Practices
- Teamwork
- Philanthropy
- Volunteering

Culture & Values

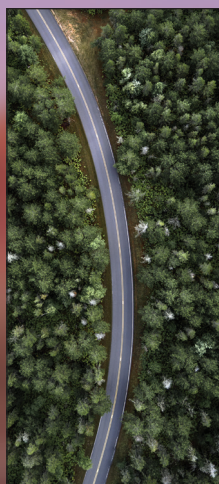
We are a forward thinking company committed to fostering a culture of teamwork. By being transparent, we encourage our employees to think outside the box and make a difference!

Quality & Construction

Our team takes pride in each unit we build. Our manufacturing standards and point to point inspections ensure each EAST TO WEST brand is built to the same quality specifications every time.

Our Commitment

We strive to provide the highest quality products at the best possible price to our customers. We invite you to be a part of the EAST TO WEST family and we look forward to exceeding your expectations!



**24/7 EMERGENCY
 ROADSIDE ASSISTANCE
 WITH VEHICLE PURCHASE***

TOWING
 JUMP-STARTS
 TIRE CHANGES
 FLUID DELIVERY
 LOCKOUT
 SERVICE

WINCH-OUT
 MOBILE MECHANIC
 TECHNICAL
 SUPPORT
 DEALER LOCATOR
 SERVICES



*VALID FOR 1 YEAR FROM DATE OF PURCHASE



Learn More
 Scan this barcode using a QR Reader on your smart phone to learn more about Forest River.



A Berkshire Hathaway company.

3000 COUNTY ROAD 6 WEST ELKHART, IN 46514
 WWW.EASTTOWESTRV.COM 574.264.6664

FREE MEMBERSHIP
 to Forest River Owners' Group

www.forestriverfrog.com



East To West RV



@easttowestr

CUSTOMER SATISFACTION



www.ForestRiverBuyLocal.com



PRE-DELIVERY INSPECTION FACILITY

20,000 square feet of quality assurance. The bare essentials for a premium product. This state-of-the-art facility gives immediate daily feedback to production for quality assurance in every unit built.

SPECIFICATION DEFINITIONS

GVWR (Gross Vehicle Weight Rating) - is the maximum permissible weight of the unit when fully loaded. It includes all weights, inclusive of all fluids, cargo, optional equipment and accessories. For safety and product performance do NOT exceed the GVWR.

GAWR (Gross Axle Weight Rating) - is the maximum permissible weight, including cargo, fluids, optional equipment and accessories that can be safely supported by a combination of all axles.

UVW (Unloaded Vehicle Weight)* - is the typical weight of the unit as manufactured at the factory. It includes all weight at the unit's axle(s) and tongue or pin and LP Gas. The UVW does not include cargo, fresh potable water, additional optional equipment or dealer installed accessories.

*Estimated average based on standard build optional equipment.

CCC (Cargo Carrying Capacity)** - is the amount of weight available for fresh potable water, cargo, additional optional equipment and accessories. CCC is equal to GVWR minus UVW. Available CCC should accommodate fresh potable water (8.3 lbs per gallon). Before filling the fresh water tank, empty the black and gray tanks to provide for more cargo capacity.

** Estimated average based on standard build optional equipment

Each Forest River RV is weighed at the manufacturing facility prior to shipping. A label identifying the unloaded vehicle weight of the actual unit and the cargo carrying capacity is applied to every Forest River RV prior to leaving our facilities.

The load capacity of your unit is designated by weight, not by volume, so you cannot necessarily use all available space when loading your unit.

YOUR *Della Terra* DEALER

All information contained in this brochure is believed to be accurate at the time of publication. However, during the model year, it may be necessary to make revisions and Forest River, Inc., reserves the right to make all such changes without notice, including prices, colors, materials, equipment and specifications as well as the addition of new models and the discontinuance of models shown in this brochure. Therefore, please consult with your Forest River dealer and confirm the existence of any materials, design or specifications that are material to your purchase decision. Litho. U.S.A. FOR 1876 P&W: 2021.07.18