



Jay Flight



Serial #: 1UJBC0BP7R75K0145  
Model: 265RLSW JAY FLIGHT TT

Model Year: 2024 Dealer Name: BIG BOY'S TOYS LTD  
1421 EAST ISLAND HIGHWAY  
Nanoose Bay, BC V9P 9A3  
CAN

Standard Equipment

Optional Equipment

THE FOLLOWING ITEMS ARE STANDARD ON THIS MODEL  
AT NO EXTRA CHARGE

OPTIONAL EQUIPMENT INSTALLED ON THIS VEHICLE  
BY MANUFACTURER

- EXTERIOR
  - 20 lb. LP Bottles with Cover (2)
  - Enclosed and heated underbelly
  - Axles with electric, self-adjusting brakes and easy-lube hubs
  - I-Class™ cambered structural steel I-beams
  - Fully integrated A-frame
  - 5/8 in. tongue-and-groove plywood floor decking
  - Magnum Truss™ Roof system with plywood decking
  - PVC roofing membrane (limited lifetime warranty)
  - Large exterior downspouts
  - Galvanized steel, impact-resistant wheel wells
  - 30-amp service
  - Exterior TV mount and bracket
  - LP quick connect (outside gas grill prep)
- INTERIOR
  - 81 in. ceiling height
  - Shower/tub surround
  - Solid hardwood cabinet doors
  - J-Steel™ jackknife sofa with armrest & cup holders (most models)
  - Vinyl flooring throughout (including slide floors)
  - Window shades
  - Residential-style kitchen countertops
  - Heavy-duty, 75 lb., full-extension, steel ball-bearing drawer guides
  - USB charging station
  - Queen mattress
  - Plywood bed platforms
  - Main bed struts
  - 300 lb. rated bunk beds (select models)
  - 600 lb. rated bunk beds (double bunks)
  - Privacy curtains in bunk areas (select models)
  - Vented bunk windows (select models)
  - 4 in. thick bunk mats (select models)
  - Wooden bedroom doors (select models)
  - Shower curtain with curved shower track (select models)
- CUSTOMER VALUE PACKAGE (Mandatory)
  - Goodyear® Endurance® tires (made in the USA)
  - On-demand tankless water heater
  - Keyed-Alike™ entry and baggage doors
  - Outside shower
  - Power awning with LED lights
  - Marine-grade exterior speakers
  - Black tank flush
  - Spare tire with cover
  - Rock Solid stabilizer system
  - Overlander 1 Solar Package: (1) 200W solar panel and 30-amp digital controller
  - Large main entry door grab handle
  - Power tongue jack
  - Range hood
  - Oven with 3-burner recessed cooktop with glass cover
  - Microwave oven
  - Fitted bed sheet
  - Bathroom skylight
  - Sink cover
  - Bathroom medicine cabinet
  - Solid Step® entry steps (N/A 380DQS)
  - 13.5K BTU A/C
  - AM/FM/Bluetooth® stereo
  - Backup and side view camera prep
  - Bathroom power vent
  - Detachable power cord
  - G20 dark tinted privacy windows
  - Inverter pre-wire
  - Friction hinge entry door with window and shade prep
  - LED exterior and interior lights
  - One-piece front fiberglass exterior wall
  - Seamless countertops

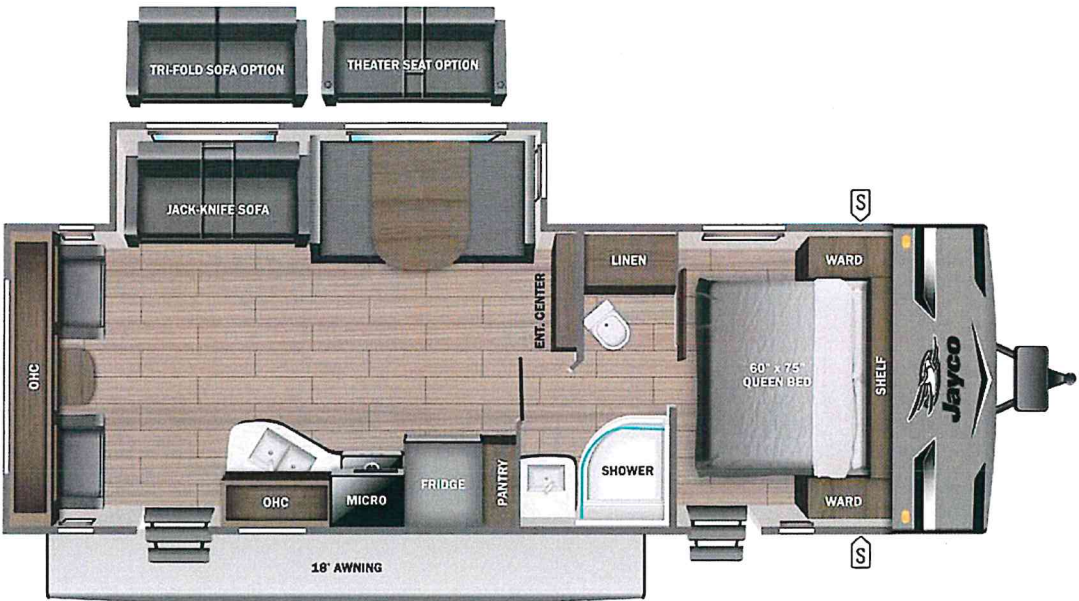
Base price  
CSA STANDARDS  
CUSTOMER VALUE PACKAGE  
NO BAJA EDITION  
13,500 BTU AC  
30 AMP SERVICE  
32" LED SMART TV  
FIBERGLASS SIDEWALL  
ALUMINUM RIMS (15")  
30# LP GAS BOTTLES  
ROOF LADDER (STD)  
DINETTE  
HIDE-A-BED SOFA

UNIT TOTAL

DEALER INSTALLED OPTIONS

Manufacturer's Suggested Retail Price

TOTAL AMOUNT DOES NOT INCLUDE STATE AND LOCAL TAXES OR LICENSE FEES. THE PRICE SHOWN ABOVE MAY OR MAY NOT BE REPRESENTATIVE OF THE ACTUAL SELLING PRICE OF SIMILAR RECREATIONAL VEHICLES IN YOUR AREA.



**UVW**  
3316 kgs

**Sleeps**

**Length**  
31' 0.75"

DIMENSIONS

Exterior height:.....136.50"  
Exterior width:.....96.00"

WEIGHTS

GVWR:.....3560  
GAWR (front):.....1995  
GAWR (rear):.....1995  
Approx. Gross Cargo Carrying Capacity(GCCC):.....244

TIRES

Tire size (front):.....ST225/75R15E  
Tire size (mid):.....  
Tire size (rear):.....ST225/75R15E  
Tire size (spare):.....ST225/75R15E

CAPACITIES

Fresh water tank (gals.):...76.00  
Gray water tank (gals.):...39.00  
Black water/toilet tank (gals.):...39.00  
Propane (kgs.):.....27  
Propane (gals.):.....14  
Water heater (gals.):.....0.00

SEATING & SLEEPING

\*\*\*Some dimensions may be rounded and may vary from the acutal dimensions\*\*\*  
\*\*\*Weights may be estimated calculations and may vary from the actual weight  
- refer to the vehicle weight labels for actual weights\*\*\*  
Floorplans, features and specifications are subject to change without notice.

