



Jay Flight SLX



Serial #: 1UJBC0BL4R7ZZ0128
 Model: 210QBW JAY FLIGHT SLX TT

Model Year: 2024 Dealer Name: BIG BOY'S TOYS LTD
 1421 EAST ISLAND HIGHWAY
 Nanoose Bay, BC V9P 9A3
 CAN

Standard Equipment

THE FOLLOWING ITEMS ARE STANDARD ON THIS MODEL AT NO EXTRA CHARGE

- EXTERIOR**
- Axles with electric, self-adjusting brakes and easy-lube hubs
 - Fully-integrated A-frame
 - Galvanized-steel, impact resistant wheel wells
 - Magnum Truss™ Roof System
 - Seamless one piece roof material
 - Large exterior downspouts
 - 30-amp service
 - Exterior cable TV hookup
 - LP quick connect (outside grill prep)
 - 5,000 BTU wall mount A/C (single axle models)
 - Nitrogen filled radial tires

- INTERIOR**
- Solid hardwood cabinet doors with screwed stile construction and hidden hinges
 - Vinyl flooring throughout
 - Digital TV antenna
 - Residential-style kitchen countertops
 - High rise kitchen faucet
 - Heavy-duty, 75 lb., full-extension, steel ball-bearing drawer guides
 - Plywood bed platforms
 - Queen mattress (select models)
 - 300 lb. rated single bunk beds
 - 600 lb. rated double bunk beds
 - Marine-grade toilet with foot flush
 - Shower curtain with curved shower track (select models)
 - Wood-trimmed mirror in bathroom

- CUSTOMER VALUE PACKAGE (Mandatory)**
- Solid Step® entry steps
 - On-demand tankless water heater
 - Power awning with LED lights
 - Marine grade exterior stereo speakers
 - Stabilizer jacks
 - Spare tire with cover
 - Keyed-Alike™ entry and baggage doors
 - Large folding entry door grab handle
 - Window shades
 - Range hood
 - 8 cu. ft. 12V refrigerator
 - Microwave oven
 - Fitted bed sheet (N/A 154BH)
 - Bathroom skylight
 - Tub/shower surround
 - AM/FM/Bluetooth® stereo
 - Backup camera prep
 - Detachable power cord
 - Bathroom vent
 - Entry door with window and shade prep
 - G20 dark tinted privacy windows
 - LED interior and exterior lights

Optional Equipment

OPTIONAL EQUIPMENT INSTALLED ON THIS VEHICLE BY MANUFACTURER

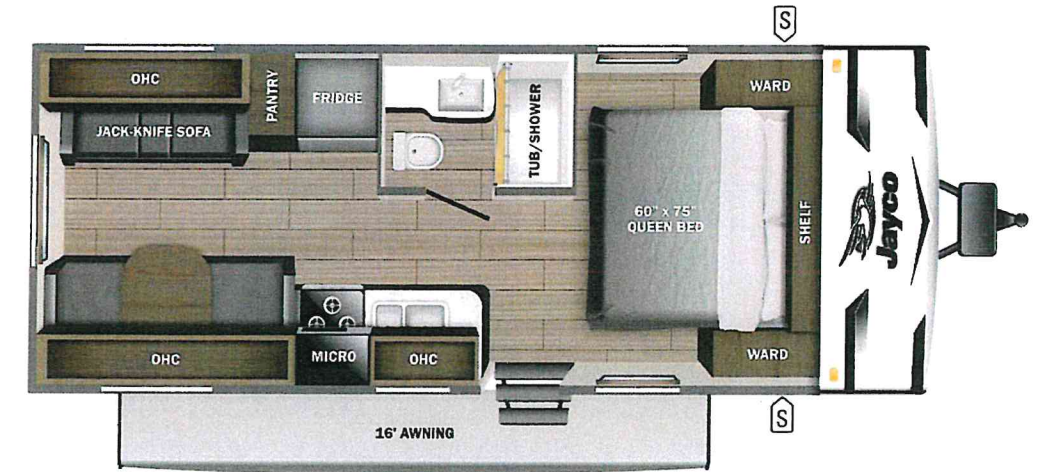
- Base price
- CSA STANDARDS
- CUSTOMER VALUE PACKAGE
- OVERLANDER SOLAR PACKAGE
- 13,500 BTU ROOF MOUNTED AC
- STANDARD RADIAL TIRES

UNIT TOTAL

DEALER INSTALLED OPTIONS

Manufacturer's Suggested Retail Price

TOTAL AMOUNT DOES NOT INCLUDE STATE AND LOCAL TAXES OR LICENSE FEES. THE PRICE SHOWN ABOVE MAY OR MAY NOT BE REPRESENTATIVE OF THE ACTUAL SELLING PRICE OF SIMILAR RECREATIONAL VEHICLES IN YOUR AREA.



UVW
2323 kgs



Sleeps



Length
25' 8"

DIMENSIONS

Exterior height:.....126.00"
 Exterior width:.....96.00"
WEIGHTS
 GVWR:.....2494
 GAWR (front):.....1587
 GAWR (rear):.....1587
 Approx. Gross Cargo Carrying Capacity (GCCC):.....171

CAPACITIES

Fresh water tank (gals.):...84.00
 Gray water tank (gals.):...39.00
 Black water/toilet tank (gals.):.....33.00
 Propane (kgs.):.....18
 Propane (gals.):.....9
 Water heater (gals.):.....0.00

SEATING & SLEEPING

TIRES

Tire size (front):.....ST205/75R14D
 Tire size (mid):.....
 Tire size (rear):.....ST205/75R14D
 Tire size (spare):.....ST205/75R14D

Some dimensions may be rounded and may vary from the actual dimensions
 Weights may be estimated calculations and may vary from the actual weight - refer to the vehicle weight labels for actual weights
 Floorplans, features and specifications are subject to change without notice.

