



Jay Feather



Serial #: 1UJBB0BM8R1J40078
 Model: 22RB JAY FEATHER TT

Model Year: 2024 Dealer Name: BIG BOY'S TOYS LTD
 1421 EAST ISLAND HIGHWAY
 Nanoose Bay, BC V9P 9A3
 CAN

Standard Equipment

THE FOLLOWING ITEMS ARE STANDARD ON THIS MODEL AT NO EXTRA CHARGE

- EXTERIOR**
- Aerodynamic, rounded front profile with aluminum framing
 - Stronghold VBL™ walls with double-sided Azdel composite (sidewalls, rear walls and slide out boxes)
 - 2 in. Stronghold VBL™ floor with 2 lb. density foam
 - Keyed-Alike™ lock system
 - Magnum Truss™ Roof System with limited lifetime warranty
 - American-made Norco Z-frame with integrated A-frame
 - Dark-tinted safety-glass windows
 - Marine grade exterior speakers with blue LED accent lighting
 - Galvanized steel and impact-resistant wheel wells
 - 30-amp service
 - Bumper-mount bracket for 17 in. griddle
 - Outdoor camp kitchen with galvanized steel bases (select models)
 - Battery quick disconnect
 - Exterior TV bracket with 120V and cable hook-ups
 - 1.5 in. fresh water drain valve
 - Automotive-style aluminum rims
 - Factory installed rear roof ladder
 - Front molded decorative cap (select models)
 - Mounted camera bracket for pre-wired side and rear back-up prep
 - Swing-out entry door assist handle
- JAY SPORT PACKAGE (Mandatory)**
- LCI Solid Step fold-down aluminum tread steps on main entry door
 - Modern graphics package with dual-colored sidewall
 - Overlander 1 Solar Package: (1) 200W solar panel and 30-amp digital controller
 - Climate Shield (zero to 100 degree tested weather insulation package)
 - 32 in. or 39 in. LED Smart TV
 - Drying rack/sink cover
 - MAXXAIR® power roof vent (main living area)
 - Dual-hinge 10 cu. ft. 12V fridge

- INTERIOR**
- LED lighting throughout
 - Handcrafted, hardwood door/drawer fronts
 - Screwed and glued cabinet stiles
 - Residential vinyl flooring throughout
 - Plywood dinette, bed, bunk and shower/tub bases
 - 75 lb. full extension drawer guides
 - Residential style kitchen countertops
 - Decorative backsplash
 - 4 in. high-density dinette cushions with vinyl backing
 - 4 in. Teddy Bear soft-touch bunk mats (select models)
 - USB charging ports (multiple locations throughout)
 - Bathroom skylight
 - Decorative roller shades with reflective backer
 - 60 x 80 in. residential queen beds (60 x 76 in. in Murphy bed models)
 - Directional and closeable A/C vents
 - Foldable and portable dinette table with solid steel base (select models)
 - Gas-strutted under bed storage (most models)
 - Hidden-hinged cabinet doors
 - High output auto-ignition LP gas furnace
 - Powered roof vents in bathroom and main bedroom (most models)
- CUSTOMER VALUE PACKAGE (Mandatory)**
- American-made nitro-filled Goodyear® radial tires with self-adjusting electric brakes
 - Automotive-style aluminum rims
 - 20 lb. LP gas bottles with auto-regulator and ABS cover
 - 13,500 BTU roof-mounted A/C
 - Spare tire
 - Detachable power cord
 - Max-length power awning with LED light
 - Black tank flush
 - Outside shower
 - Power tongue jack
 - Rock Solid Stabilizer System
 - On-demand water heater
 - 55 gal. fresh water tank
 - AM/FM/Bluetooth stereo with roof-mounted speakers
 - Side and rear back-up camera prep
 - Inverter pre-wire (2 bedroom nightstand outlets, main TV and outlet for outside kitchen fridge)

Optional Equipment

OPTIONAL EQUIPMENT INSTALLED ON THIS VEHICLE BY MANUFACTURER

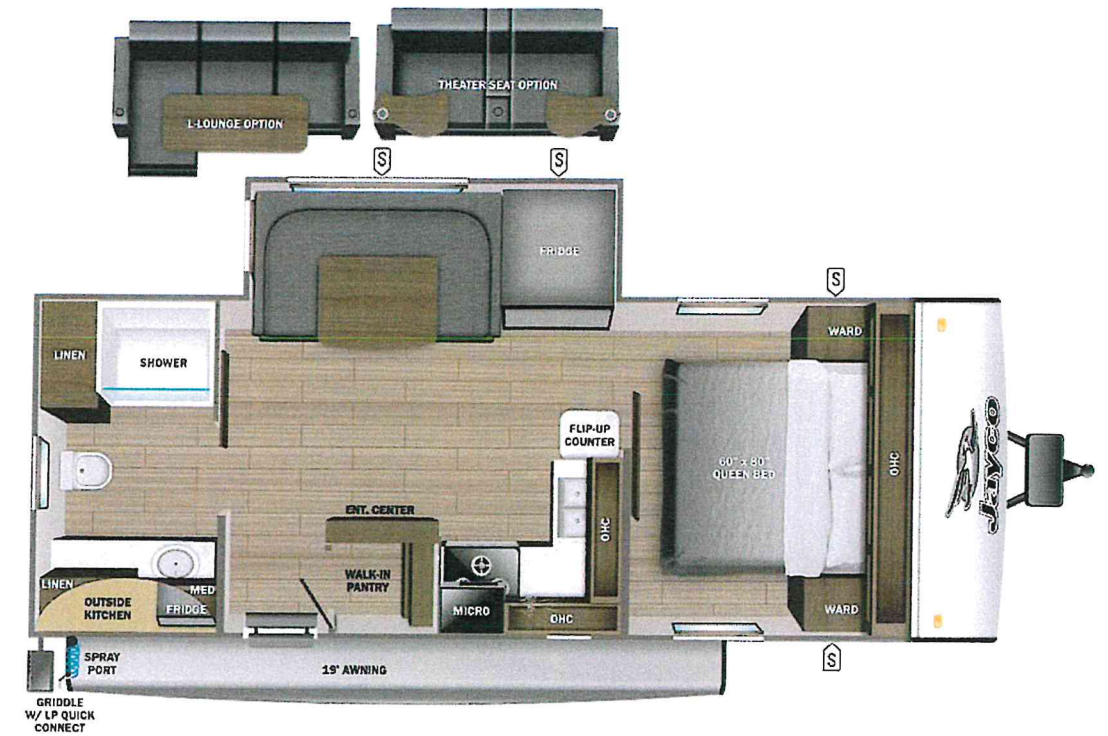
- Base price
- CSA STANDARDS
- CUSTOMER VALUE PACKAGE
- JAY SPORT PACKAGE
- NO BAJA EDITION
- OVERLANDER I SOLAR PACKAGE
- JAYCOMMAND CONTROL SYSTEM W/TPMS
- 13,500 BTU AC
- NO 2ND AC
- 30 AMP SERVICE
- NO FIREPLACE
- 30# LP GAS BOTTLES
- ROOF LADDER (STD)
- U-DINETTE

UNIT TOTAL

DEALER INSTALLED OPTIONS

Manufacturer's Suggested Retail Price

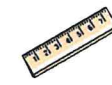
TOTAL AMOUNT DOES NOT INCLUDE STATE AND LOCAL TAXES OR LICENSE FEES. THE PRICE SHOWN ABOVE MAY OR MAY NOT BE REPRESENTATIVE OF THE ACTUAL SELLING PRICE OF SIMILAR RECREATIONAL VEHICLES IN YOUR AREA.



UVW
2741 kgs



Sleeps



Length
27' 9.88"

DIMENSIONS

Exterior height:.....127.50"
 Exterior width:.....96.00"

WEIGHTS

GVWR:.....3175
 GAWR (front):.....1587
 GAWR (rear):.....1587
 Approx. Gross Cargo Carrying Capacity (GCCC):.....433

TIRES

Tire size (front):.....ST205/75R14D
 Tire size (mid):.....
 Tire size (rear):.....ST205/75R14D
 Tire size (spare):.....ST205/75R14D

CAPACITIES

Fresh water tank (gals.):...55.00
 Gray water tank (gals.):...61.00
 Black water/toilet tank (gals.):.....34.00
 Propane (kgs.):.....27
 Propane (gals.):.....14
 Water heater (gals.):.....0.25

SEATING & SLEEPING

Some dimensions may be rounded and may vary from the actual dimensions

Weights may be estimated calculations and may vary from the actual weight - refer to the vehicle weight labels for actual weights

Floorplans, features and specifications are subject to change without notice.

