



# Range Lite Air



Serial #: 58TBH0AK4N3RB3133  
 Model: 19MBH RANGE LITE AIR TT

Model Year: 2022 Dealer Name: BIG BOY'S TOYS LTD  
 1421 EAST ISLAND HIGHWAY  
 Nanoose Bay, BC V9P 9A3  
 CAN

## Manufacturer's Suggested Retail Price

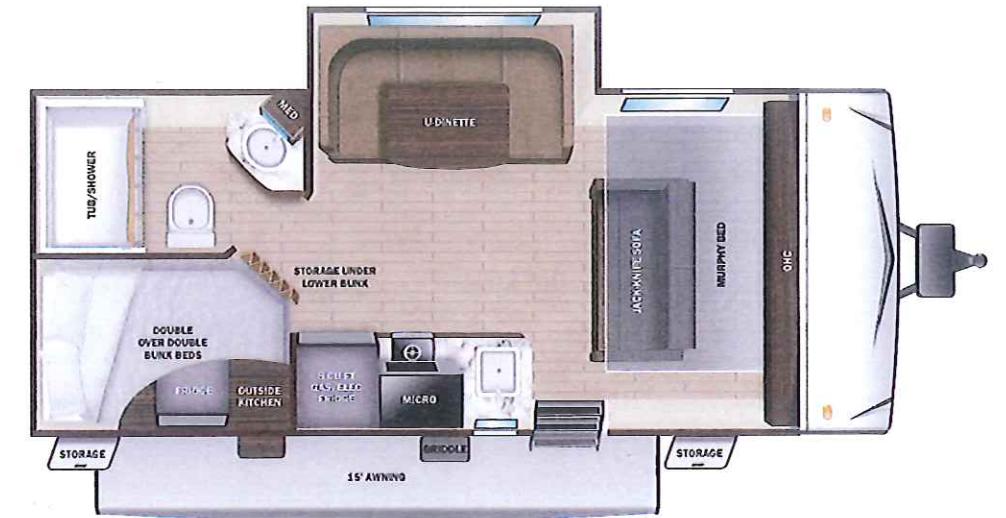
TOTAL AMOUNT DOES NOT INCLUDE STATE AND LOCAL TAXES OR LICENSE FEES. THE PRICE SHOWN ABOVE MAY OR MAY NOT BE REPRESENTATIVE OF THE ACTUAL SELLING PRICE OF SIMILAR RECREATIONAL VEHICLES IN YOUR AREA.

### Standard Equipment

THE FOLLOWING ITEMS ARE STANDARD ON THIS MODEL AT NO EXTRA CHARGE

### Optional Equipment

OPTIONAL EQUIPMENT INSTALLED ON THIS VEHICLE BY MANUFACTURER



Base price  
 Q.A.I Construction  
 (Canadian Dealers ONLY)  
 Customer Convenience  
 Package  
 Off Grid Solar Package  
 WiFi Router  
 Heated Tank Pad

- EXTERIOR**
- 30 amp service
  - Dome style TV antenna with Wi-Fi prep
  - Exterior grill hookup quick connect port
  - Flexible LP lines
  - Fully-walkable roof
  - Impact resistant galvanized steel wheel wells
  - Magnum Roof™ system
  - Marine grade exterior speakers (2)
  - Molded front cap with LED lighting
  - Power awning
  - PVC roofing membrane (lifetime limited warranty)
  - Rear observation camera prep
  - Rear roof access ladder
  - Single axle design
  - Solid swing-down entry steps
  - Thule® roof mount accessory rack
  - Tinted safety-glass windows throughout
  - TuffShell™ - vacuum bonded laminated construction, reinforced with heavy-duty fiberglass and welded aluminum frames

- INTERIOR**
- 2-burner recessed range with flush mount glass cover
  - 75 lb. ball bearing drawer guides
  - 80" bed
  - 81" interior height
  - Bathroom skylight and roof vent
  - Cable and satellite prep
  - Convection microwave
  - Deep bowl kitchen sink
  - Electrical outlets and USB ports in master bedroom
  - Foot flush toilet
  - Kid and pet friendly – residential vinyl flooring throughout, vinyl furniture, no floor heat registers
  - LED interior lighting
  - Rangehood
  - Residential high-rise faucet
  - Residential vinyl flooring
  - Roller blackout night shades
  - Screwed and glued hardwood cabinetry
  - Seamless pressed membrane countertops
- CUSTOMER CONVENIENCE PACKAGE (MANDATORY)**
- 15" off-road radial tires with aluminum rims
  - 15,000 BTU A/C
  - 2-30 lb. LP bottles
  - 32" 12V LED TV with built in AM/FM/Bluetooth® soundbar
  - 6 gal. gas/electric DSI water heater
  - Detachable power cord
  - Power tongue jack
  - Roof mount solar prep
  - Rubber torsion axle with increased ground clearance adjustments
  - Side camera prep marker lights
  - Spare tire
  - Stabilizer jacks
  - Thermal Seal - enclosed and insulated underbelly and fully insulated roof with a PVC roofing membrane

**UVW**  
 2092 kgs

**Sleeps**

**Length**  
 23' 6.13"

#### DIMENSIONS

Exterior height:.....124.75"

Exterior width:.....100.25"

#### WEIGHTS

GVWR:.....2494

GAWR (front):.....2333

GAWR (rear):.....0

Approx. Gross Cargo Carrying Capacity(GCCC):.....402

#### CAPACITIES

Fresh water tank (gals.):...55.00

Gray water tank (gals.):...30.00

Black water/toilet tank (gals.):.....30.00

Propane (kgs.):.....27

Propane (gals.):.....14

Water heater (gals.):.....6.00

#### SEATING & SLEEPING

#### TIRES

Tire size (front):.....ST235/75R15D

Tire size (mid):.....

Tire size (rear):.....

UNIT TOTAL

DEALER INSTALLED OPTIONS

\*\*\*Some dimensions may be rounded and may vary from the actual dimensions\*\*\*

\*\*\*Weights may be estimated calculations and may vary from the actual weight

- refer to the vehicle weight labels for actual weights\*\*\*

Floorplans, features and specifications are subject to change without notice.

