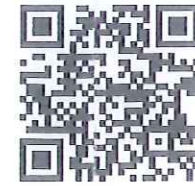




Eagle HT



Serial #: 1UJCA0BP8P1PF0086
 Model: 27RL EAGLE HT FW

Model Year: 2023 Dealer Name: BIG BOY'S TOYS LTD
 1421 EAST ISLAND HIGHWAY
 Nanoose Bay, BC V9P 9A3
 CAN

Standard Equipment

THE FOLLOWING ITEMS ARE STANDARD ON THIS MODEL AT NO EXTRA CHARGE

- EXTERIOR**
- StrongholdVBL™ aluminum framed and vacuum bond laminated gelcoated fiberglass exterior walls (including rear wall and slide room end walls)
 - Magnum Truss™ Roof System with one piece seamless roofing material with 20 year warranty
 - Climate Shield™ zero-degree tested weather protection:
 - Fully enclosed and heated underbelly (ducted)
 - 35,000 BTU output furnace
 - Double layer fiberglass batt insulation in ceiling and floor
 - Double sided radiant barrier insulation (roof, floor, and behind cap)
 - PEX plumbing
 - HELIX Cooling System™ (industry exclusive):
 - Jayco exclusive insulated dual duct design
 - Directional and closeable A/C vents
 - Larger return air vents with user accessible filters
 - JaySMART™ (Safety Markers And Reverse Travel)
 - LED lighting (patented)
 - Painted fiberglass front cap with built-in specialty LED lighting
 - Custom automotive-grade vinyl exterior graphics package
 - LED exterior lighting package
 - Detachable shore power cord
 - Dual 30 lb. propane bottles with auto regulator
 - Pass-through storage with Slam-latch™ baggage doors
 - Digital TV antenna with Wi-Fi prep
 - Dual channel exterior marine-grade speaker
 - Fully enclosed, LED-lighted universal docking center:
 - Selectable water connections
 - Quick-connect outside shower
 - Black tank flush, winterization, and sanitization
 - Independent satellite and whole coach cable hookups
 - Water heater bypass
 - Battery disconnect
 - Under-mounted spare tire (Goodyear® Endurance® - made in the USA)
 - LP quick-connect
 - Slide topper/awning prep
 - "Industry's BEST" outside kitchen (select models)
- LUXURY PACKAGE (MANDATORY)**
- Electric auto-leveling
 - Rotational pin box
 - JAYCOMMAND® "Smart RV" system (Pro tablet)
 - 8 cu. ft. gas/electric refrigerator with wooden panel inserts
 - Blackout roller shades
 - Residential style glass shower doors
 - Tire Pressure Monitoring System (TPMS)

- INTERIOR**
- Solid hardwood slide fascia
 - Handcrafted and glazed doors, drawers, and trim
 - Heavy-duty, 75 lb., full-extension, steel ball-bearing drawer guides
 - 5/8 in. tongue-and-groove joined plywood floor decking
 - Residential vinyl flooring (made in the USA)
 - Residential vinyl flooring in slideouts (no carpet)
 - LED dimmer switches (multiple locations)
 - Tri-fold hide-a-bed sofa with residential sleep surface (select models)
 - Theater seating (select models)
 - Stainless steel kitchen sink
 - Matte black kitchen faucet with pull-out sprayer
 - Dual USB charging ports (multiple locations)
 - Extra 120V power outlets in kitchen and slide rooms (where applicable)
 - Residential quilted bedspread and pillows
 - Gas-strutted under-bed storage
 - Inverter pre-wire (multiple locations)
 - C.P.A.P. prepped bedroom
 - Carbon monoxide and LP detector
 - Bathroom skylight
 - LED backlit medicine cabinet with custom framed mirror
 - Bathroom tile backsplash
 - Blue LED nightlights in bathrooms
 - Porcelain foot flush toilet
- CUSTOMER VALUE PACKAGE (MANDATORY)**
- MORryde® StepAbove™ entrance steps (main entrance) with blue LED light
 - 15,000 BTU "Whisper Quiet" A/C
 - 50-amp service with dual A/C ducts and second A/C prep
 - Electric patio awning with integrated dimmable LED lights
 - 6 gal. gas/electric water heater
 - Custom machined aluminum rims
 - Rear 2 in. towing receiver with 4 pin connector
 - Keyed-Alike™ lock system (single key for all doors/locks)
 - Rooftop and ground solar prep by Go Power!®
 - Security monitor prep- observation camera prep (rear, sides & entrance door)
 - Hidden hinges on cabinet doors
 - Upgraded friction hinge entrance door with XL grab handle
 - LED Smart HDTV with fully digital HDMI® output
 - 12V A/V system with Bluetooth® and HDMI®
 - Stainless steel range with glass cover
 - Stainless steel 30 in. over the range microwave
 - Residential queen (60 in. x 80 in.) mattress with under-bed storage
 - Rain-proof bathroom power vent
- 4 STAR HANDLING PACKAGE (MANDATORY)**
- Goodyear® Endurance® tires (made in the USA, load range 'E')
 - Dexter® Axles with Nev-R-Adjust® brakes and E-Z Lube® hubs
 - MORryde® CRE-3000™ rubberized suspension
 - Wet bolt fasteners, bronze bushings, and shock absorber prep

Optional Equipment

OPTIONAL EQUIPMENT INSTALLED ON THIS VEHICLE BY MANUFACTURER

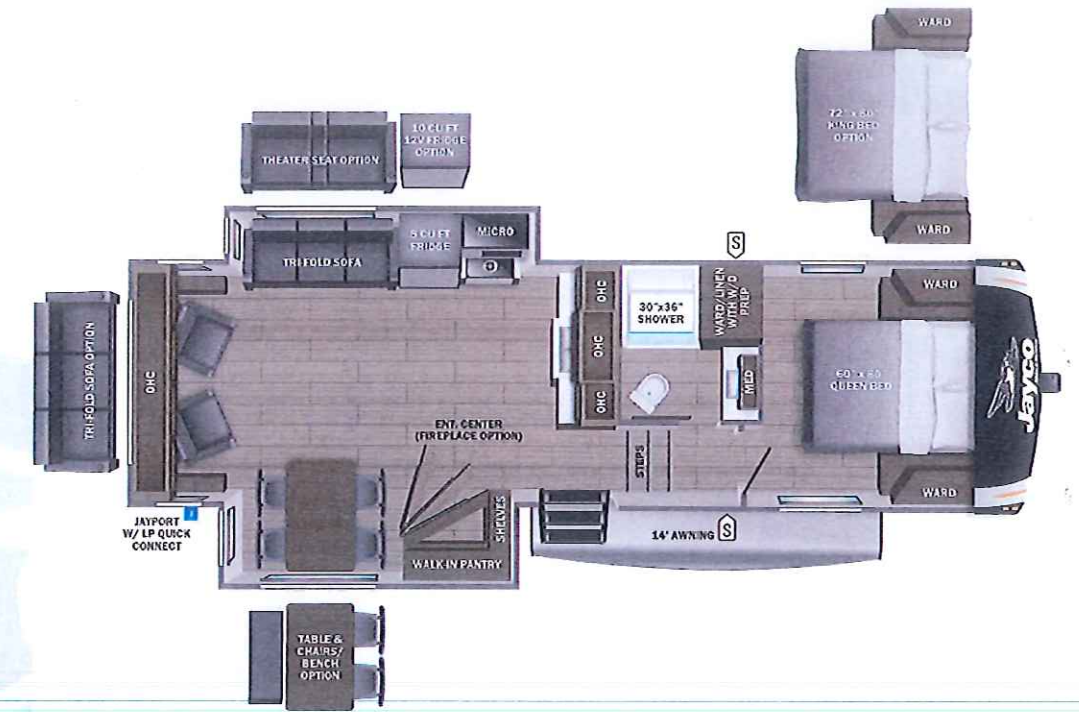
- Base price
- Modern Farmhouse
- CSA Standards
- Customer Value Package
- Luxury Package
- Four Star Handling Package
- Solar Prep
- Dry Camping Package
- Extreme Weather Package
- Roof Vent in Bedroom
- Fireplace
- 8 Cu. Ft. Refrigerator
- Observation System Prep
- Frameless Dual Pane
- Tinted Safety Glass
- Windows
- Roof Ladder (Std)
- Outside Griddle for JayPort System
- 15" Tire
- Free Standing Table & Chairs
- Recliners & Tri-Fold Sofa
- Queen Bed

UNIT TOTAL

DEALER INSTALLED OPTIONS

Manufacturer's Suggested Retail Price

TOTAL AMOUNT DOES NOT INCLUDE STATE AND LOCAL TAXES OR LICENSE FEES. THE PRICE SHOWN ABOVE MAY OR MAY NOT BE REPRESENTATIVE OF THE ACTUAL SELLING PRICE OF SIMILAR RECREATIONAL VEHICLES IN YOUR AREA.



UVW 4452 kgs **Sleeps** **Length** 31' 6.5"

DIMENSIONS		CAPACITIES	
Exterior height:	159.00"	Fresh water tank (gals.):	81.00
Exterior width:	96.63"	Gray water tank (gals.):	80.00
WEIGHTS		Black water/toilet tank (gals.):	43.00
GVWR:	4921	Propane (kgs.):	36
GAWR (front):	2333	Propane (gals.):	18
GAWR (rear):	2333	Water heater (gals.):	6.00
Approx. Gross Cargo Carrying Capacity (GCCC):	469	SEATING & SLEEPING	
TIRES			
Tire size (front):	ST225/75R15E		
Tire size (mid):			
Tire size (rear):	ST225/75R15E		
Tire size (spare):	ST225/75R15E		

Some dimensions may be rounded and may vary from the actual dimensions
 Weights may be estimated calculations and may vary from the actual weight - refer to the vehicle weight labels for actual weights
 Floorplans, features and specifications are subject to change without notice.

