

SUNRISE SERIES



2 0 0 0



The 2000 Itasca® Sunrise® Series is much more than a line of affordable Class A motor homes. It is also a line of very well-equipped and appointed Class A motor homes. Each of our three Sunrise SE models and four Sunrise full-basement models offers distinctions only associated with Itasca, along with Winnebago Industries' renowned craftsmanship and quality. It's a combination you won't find anywhere else. Itasca Sunrise. The extraordinary Class A motor home that can exceed your dreams — without exceeding your budget.

Sunrise

Meet your needs

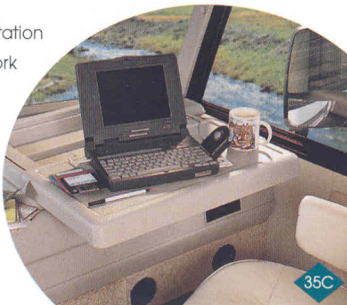


35C BAROQUE BOUQUET

Like all Itasca motor homes, the Sunrise Series is loaded with distinctive features, including ceiling-ducted air conditioning, and, on Sunrise full-basement models, Flexsteel® furniture, and available dual glazed, thermo-insulated windows. The 35C slideout, shown here, includes Winnebago Industries' exclusive **STOREMORE™** Hydraulic Slideout System. This innovative system allows interior overhead cabinets and exterior storage compartments to extend with the slideroom.

The available workstation includes a large work surface, letting you bring your home office on the road.

The workstation neatly tucks away when not in use.



35C

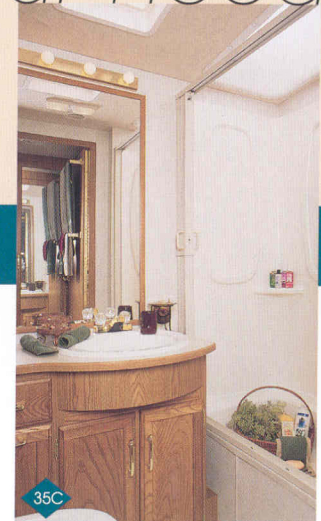


4" door handles are another example of the user-friendly enhancements found throughout the Sunrise Series.



35C BAROQUE BOUQUET

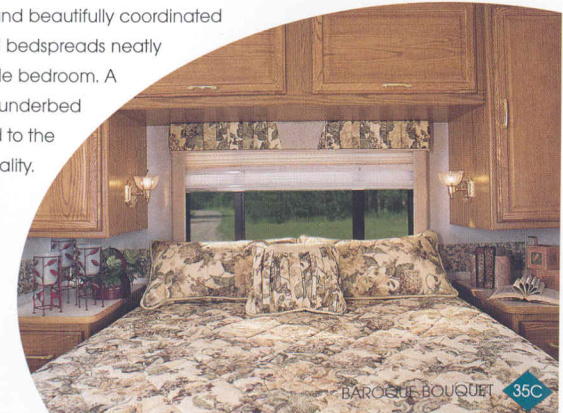
A touch control microwave, three-burner Magic Chef® range with oven, and double-door refrigerator/freezer are among the galley's standard features. Most models also feature a pantry for expanded storage space.



35C

This well-appointed bathroom sets itself apart with its residential-height toilet, shower/tub with flexible shower head, and well-placed lavatory, linen and medicine cabinets.

Spacious cabinetry and beautifully coordinated window treatments and bedspreads neatly accent the comfortable bedroom. A TV shelf or stand and underbed storage space add to the bedroom's functionality.

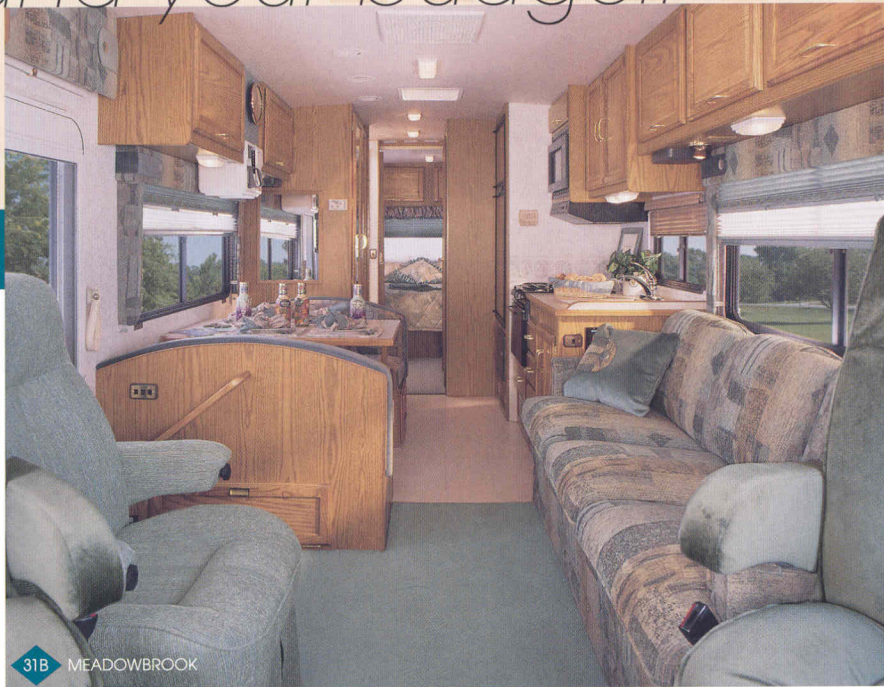


BAROQUE BOUQUET 35C

Sunrise SE

and your budget.

Both inside and out, the Sunrise Series is designed to make life convenient and enjoyable. Assist handles are located in just the right places. Ceiling lights are controlled by wall-mounted switches. The auxiliary battery disconnect is conveniently located at the entrance door. And the winterizing valve, water heater bypass and 1" fresh water tank drain are all standard features that make practical sense.



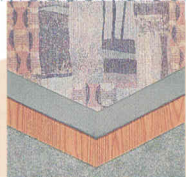
31B MEADOWBROOK

Abundant storage space is just one more Sunrise advantage. For added beauty, the deep upper cabinets include raised-panel, stile-and-rail doors. There is also easily accessible storage located below the dinette seats.

SUNRISE SERIES DECOR OPTIONS

To assure their strength and durability, fabrics selected for use in the Sunrise Series must pass a series of rigorous tests. Just one example is the "double rub" test, where a machine mechanically simulates a person getting in and out of a seat up to 30,000 times. (This equates to nearly four times a day for over 20 years!)

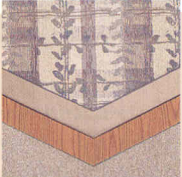
Meadowbrook



Main
Accent
Wood
Carpet

with Waterford Oak

Riverwalk



Main
Accent
Wood
Carpet

with Waterford Oak

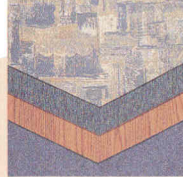
Bluebonnet



Main
Accent
Wood
Carpet

with Waterford Oak

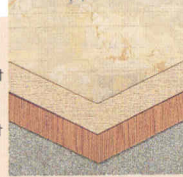
Moonstone



Main
Accent
Wood
Carpet

with Waterford Oak

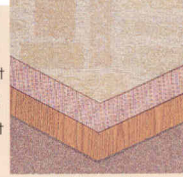
Cypress



Main
Accent
Wood
Carpet

with Waterford Oak

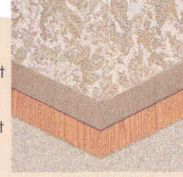
Ambrosia



Main
Accent
Wood
Carpet

with Waterford Oak

Baroque Bouquet



Main
Accent
Wood
Carpet

with Waterford Oak

Entertainment options include an available 19" color TV and VCR. Each model is satellite system ready and comes equipped with our TV enhancement package. The driver's area has comfortable seats with built-in lumbar support and an available rear view monitoring system with one-way audio. On select models, Ultraleather HP™ driver and passenger seats are also available, adding to the unique appearance of the Sunrise.



BLUEBONNET 29A

Sunrise SE

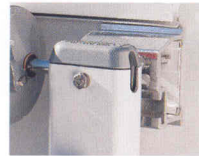
Sunrise

We take great pride in our commitment to building superior motor homes. And it all starts with our solid **SUPER STRUCTURE** construction. Outriggers and the support substructure are mounted to the chassis using an advanced laser alignment system to ensure a square foundation upon which to build. Interlocking sidewall and roof joints provide superior strength and excellent load bearing capabilities. The result is one of the strongest body constructions in the industry.



Popular standard exterior amenities include an electric entrance door step, heavy-duty screen door with a large kick panel, ladder, aluminum rear bumper with end caps, and a trailer hitch.

The exterior wash station is useful for fast and easy clean-ups, and neatly tucks away when not in use.

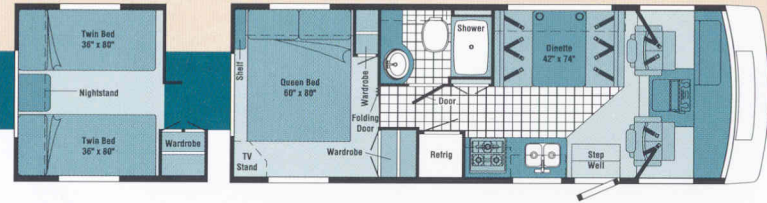


Another new feature is our standard awning rail with a built-in rain gutter designed to channel water to the ends of the coach.

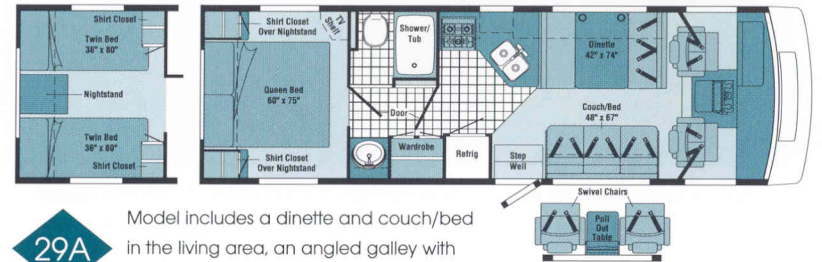
2000

Sunrise SE

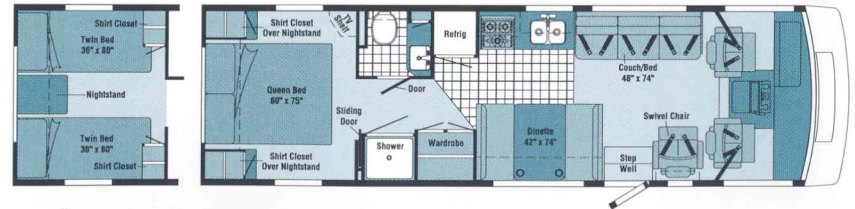
Floorplans



26P Provides all the necessities, including a private bathroom and a residential queen size bed.



29A Model includes a dinette and couch/bed in the living area, an angled galley with practical workspace, and a spacious, cross-aisle bathroom.



31B Includes a comfortable swivel chair and a couch/bed in the living area, plus a large bedroom.



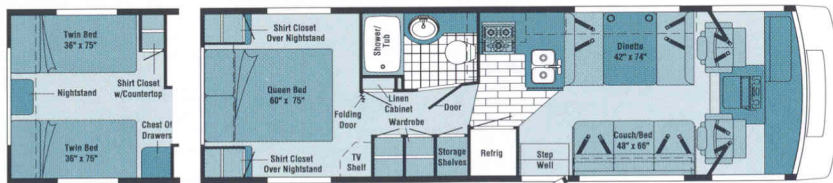
Our roof's one-piece fiberglass outer skin adds strength, doesn't expand or contract like rubber membranes, and increases durability. As a matter of fact, this design is so strong, it is backed with a 10-year limited parts and labor warranty.



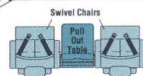
Our heated, pass-through storage compartments include fully hinged and insulated belt-line storage doors with a single-handle latch for easy one-handed access.

Sunrise Floorplans

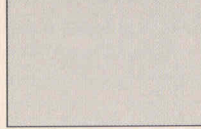
-  Standard Vinyl Flooring
-  Standard Vinyl Plank Flooring
-  Seatbelts



30A Offers the choice of a couch/bed or two swivel chairs with a pull-out table in the living area. Handy storage shelves, a linen cabinet and a large wardrobe provide ample storage space.

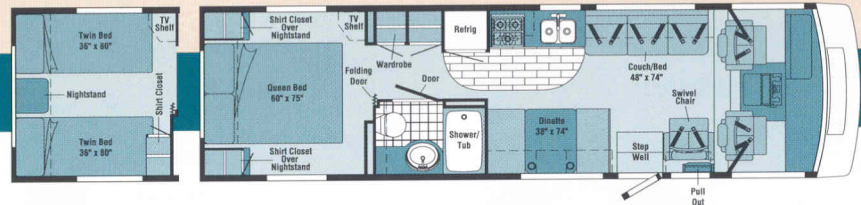


Sahara Grey

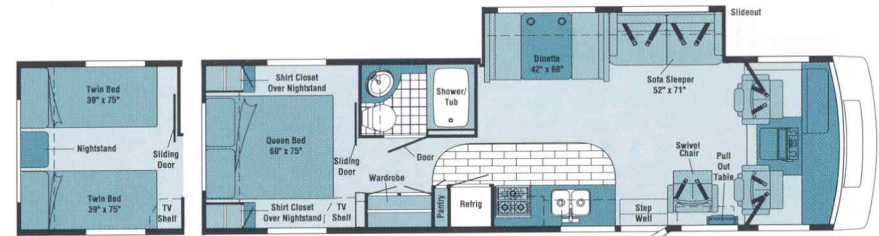


EXTERIOR VALANCE PANELS

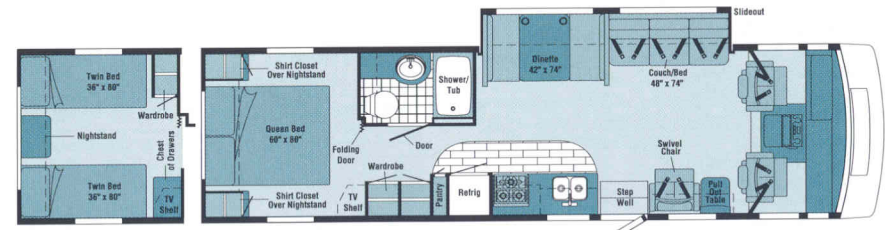
Lower valance paint is standard on all Sunrise full-basement models.



32T Includes a swivel chair with a pull-out table in the living area, a comfortable couch/bed and a large, private bath.



33V Slideout model offering a residential-style sofa/sleeper in the living area, a large galley with a slideout pantry and abundant counter space. Our **STOREMORE™** Hydraulic Slideout System provides easier access to exterior storage compartments.



35C Slideout model featuring a couch/bed in the living area and a pull-out table next to the swivel chair. Our **STOREMORE™** Hydraulic Slideout System provides easier access to exterior storage compartments.

2000 Sunrise Series Specifications

	Sunrise SE		
	26P	29A	31B
Length	26'5"	30'	31'11"
Exterior Width Δ	8'5.5"	8'5.5"	8'5.5"
Interior Height	6'8"	6'8"	6'8"
Interior Width	8'0.5"	8'0.5"	8'0.5"
Fuel Capacity	40 gal.	75 gal.	75 gal.
Fresh Water Capacity w/Heater*	56 gal.	71 gal.	71 gal.
Holding Tank Capacity - Black/Gray	35/43 gal.	30/34 gal.	30/34 gal.
LP Capacity ∇	23 gal.	23 gal.	23 gal.
Wheelbase	158.5"	178"	190"
Exterior Height w/AC*	11'1"	11'4"	11'5"
Exterior Storage	46.2 cu. ft.	112.9 cu. ft.	117.3 cu. ft.
GVWR - Standard/Option	12,300*/14,800 lbs.	14,800 lbs./NA	14,800 lbs./NA

	Sunrise			
	30A	32T	33V	35C
Length	30'11"	32'6"	33'1"	35'3"
Exterior Width Δ	8'5.5"	8'5.5"	8'5.5"	8'5.5"
Interior Height	6'8"	6'8"	6'8"	6'8"
Interior Width	8'0.5"	8'0.5"	8'0.5"	8'0.5"
Fuel Capacity	75 gal.	75 gal.	75 gal.	75 gal.
Fresh Water Capacity w/Heater*	85 gal.	85 gal.	66 gal.	67 gal.
Holding Tank Capacity - Black/Gray	55/56 gal.	49/50 gal.	40/33 gal.	40/50 gal.
LP Capacity ∇	23 gal.	23 gal.	28 gal.	28 gal.
Wheelbase	190"	208"	200"	220"
Exterior Height w/AC*	11'10"	11'10"	11'10"	11'9"
Exterior Storage	125.7 cu. ft.	137.2 cu. ft.	115.6 cu. ft.	143.1 cu. ft.
GVWR - Standard/Option	14,800 lbs./NA	16,500 lbs./NA	16,500 lbs./NA	16,500 lbs./NA

	Sunrise SE			Sunrise			
	26P	29A	31B	30A	32T	33V	35C
Carpeting w/Pad Stain Resistant	S	S	S	S	S	S	S
Ceiling Lights	S	S	S	S	S	S	S
Ceiling Vent* Non-Powered, Lounge		S		S			
Ceiling Vent Non-Powered, Galley			S		S	S	S
Ceiling Vent Non-Powered, Bedroom*	S	S	S	S	S		
Ceiling Vent Powered, Bathroom	S	S	S	S	S	S	S
Ceiling Ventilator Fan Powered, Lounge				O			
Ceiling Ventilator Fan Powered, Galley					O	O	O
Courtesy Light(s)	S	S	S	S	S	S	S
Color Themes (Interior) Choice of Meadowbrook (Teal), Bluebonnet (Blue), Riverwalk (Taupe)	S	S	S				
Color Themes (Interior) Choice of Baroque Bouquet (Beige), Cypress (Green), Ambrosia (Salmon), Moonstone (Blue)				S	S	S	S
Comfort & Convenience Package Add - Wall Clock, Make-Up Lights, Exchange - Beverage Tray, High Intensity Reading Lights*, Wood Beveled Edge on Dinette Table & Galley Countertops, Upgraded Ext. Logo	O	O	O	O	O	O	O
Lamp Decorative Style, Wall-Mounted in Lounge			S		S	S	S
Wardrobe Mirrored Doors, Carpeted Floor, Upper Shelf (NA 33V), Clothes Rod, Drawers (33V)	S	S	S	S	S	S	S
Windows Tinted	S	S	S	S	S	S	S
Windows* Dual Glazed, Thermo-Insulated (Single Panel Tip-Out in Bedroom)	O	O	O	O	S	FP	S

AUTOMOTIVE

	Sunrise SE			Sunrise			
	26P	29A	31B	30A	32T	33V	35C
Chassis - Workhorse® 7.4L Vortec V-8 @ 290-HP, 124-Amp. Alternator, Anti-Lock Brake System	S	S	S	S	S	S	S
Shocks/Stabilizer Pkg. Frt.	O	O	O	O	O	O	O
Tires (Radial) w/Spare	S	S	S	S	S	S	S

	Sunrise SE			Sunrise			
	26P	29A	31B	30A	32T	33V	35C
Heating/Air Conditioning Auto. Blend Air System	S	S	S	S	S	S	S
Hood Release Ext. Key Locks	S	S	S	S	S	S	S
Map Light, Map Pockets & Floor Mats	S	S	S	S	S	S	S
Mirrors (Exterior) Low Mounted, Manual Adjust	S	S	S	S	S	S	S
Mirrors (Exterior) Low Mounted, Electric Remote Control w/Defrost	O	O	O	O	O	O	O
Rear View Monitor System (Videoman) Video/One-Way Audio	O	O	O	O	O	O	O
Steering Power Assisted w/Tilt Wheel	S	S	S	S	S	S	S
Storage Cabinet (Front Overhead)	S	S	S	S	S	S	S
Sunvisors	S	S	S	S	S	S	S
Window (Driver & Passenger Side) Sliding, w/Screen	S	S	S	S	S	S	S
Windshield Wipers Pantograph Arms (Intermittent)	S	S	S	S	S	S	S
Work Station Pull-Out, Pass. Side, Dash	O	O	O	O	O	O	O

	Sunrise SE			Sunrise			
	26P	29A	31B	30A	32T	33V	35C
Stereo Power Switch For Main or Aux. Battery Use	S	S	S	S	S	S	S
Stereo w/Cassette Deck (Cab) AM/FM, w/Speakers (4), Roof-Mounted Flexible Rubber Antenna	S	S	S	S	S	S	S
Stereo w/CD Player (Cab) AM/FM, w/Speakers (4), Roof-Mounted Flexible Rubber Antenna	O	O	O	O	O	O	O
TV* Front (19" Color) w/Remote Video Selection System	O	O	O	O	O	O	O
TV* Front (19" Color) w/Remote & VCR Video Selection System	O	O	O	O	O	O	O
TV Enhancement Package* Antenna (Amplified), DC Recept. (2), Int. Jacks (2), Coax Wiring, Cable Input, TV Shelf or Stand	S	S	S	S	S	S	S

DRIVER CONVENIENCES

	Sunrise SE			Sunrise			
	26P	29A	31B	30A	32T	33V	35C
Auto. Dual Battery Charge Control, w/Aux. Start Circuit	S	S	S	S	S	S	S
Aux. Battery Disconnect	S	S	S	S	S	S	S
Cab Seats (Flexsteel®) Fabric w/3-Point Retracting Seat Belts Reclining High-Back Design, Hinged Armrests, Fixed Lumbar Support, Swivel/Slide Pedestal				S	S	S	S
Cab Seats (Flexsteel) Ultraleather HP™ w/3-Point Retracting Seat Belts Reclining High-Back Design, Hinged Armrests, Manual Lumbar Support, Swivel/Slide Pedestal				O	O	O	O
Cab Seats (Stitchcraft) Fabric w/3-Point Retracting Seat Belts Reclining High-Back Design, Hinged Armrests, Fixed Lumbar Support, Swivel/Slide Pedestal	S	S	S				
Cigarette Lighter/12-V Electrical Supply	S	S	S	S	S	S	S
Cruise Control	S	S	S	S	S	S	S
Curtain w/Track Front Wrap-Around	S	S	S	S	S	S	S
Convenience Tray	S	S	S	S	S	S	S

ENTERTAINMENT

	Sunrise SE			Sunrise			
	26P	29A	31B	30A	32T	33V	35C
Entertainment Center (Patio)* DC Receptacle, AC Duplex Receptacle, TV Jack, Radio Antenna, w/AM/FM Cassette or CD, Speakers (2), Removable TV Table, Locking Door	O	O	O	O	O	O	O
Satellite System Pre-Wiring	S	S	S	S	S	S	S

SLIDEOUT

	Sunrise SE			Sunrise			
	26P	29A	31B	30A	32T	33V	35C
StoreMore Slideout Room (Driver's Side Couch/Dinette)* Overhead Cabinets, Ext. Room Cover, Compartments Slide Out w/Room, Includes Hydraulic Leveling Jacks						S	S

INTERIOR

	Sunrise SE			Sunrise			
	26P	29A	31B	30A	32T	33V	35C
Cabinet Doors Wood Stile & Rail w/Raised Panel on Upper Cabinets	S	S	S	S	S	S	S

GALLEY

	Sunrise SE			Sunrise			
	26P	29A	31B	30A	32T	33V	35C
Coffee Maker	O	O	O	O	O	O	O
Counter Extension Flip-Up	S			S			
Decorative Dinette Light							S
Flooring (Vinyl)	S	S	S				
Flooring (Vinyl Plank)				S	S	S	S
Microwave Touch Control	S	S	S	S	S	S	S
Mirror Wall-Mounted			S				
Pantry	S			S		S	S

	Sunrise SE			Sunrise			
	26P	29A	31B	30A	32T	33V	35C
Range Hood w/Light, Powered Vent	S	S	S	S	S	S	S
Range w/Oven 3-Burners, Magic Chef®	S	S	S	S	S	S	S
Refrigerator/Freezer Double-Door, 2-Way Electronic Controls	S	S	S	S	S	S	S
Sink (Double) Stainless Steel, Recessed w/Cover, Single Control Faucet	S	S	S	S	S	S	S
Storage below Dinette Seats	S	S	S	S	S	S	S
Wall Border Decorative	S	S	S	S	S	S	S

BEDROOM

	Sunrise SE			Sunrise			
	26P	29A	31B	30A	32T	33V	35C
Bedsprad(s), Pillows, Pillow Shams	S	S	S	S	S	S	S
Chair Rail*				S	S	S	S
Lamp(s)* Decorative Style, Wall-Mounted	S	S	S	S	S	S	S
Mattress* Serta® Innerspring	S	S	S	S	S	S	S

BATHROOM

	Sunrise SE			Sunrise			
	26P	29A	31B	30A	32T	33V	35C
Flooring (Vinyl)	S	S	S	S	S	S	S
Hamper				S	S	S	S
Lavatory Cabinet	S	S	S	S	S	S	S
Linen Cabinet	S	S	S	S	S	S	S
Magazine Rack				S	S		
Medicine Cabinet	S	S	S	S	S	S	S
Mirror(s) Wall-Mounted	S	S		S	S	S	S
Shelf Rear Bath Wall				S			
Shower w/Wall Surround, Flexible Shower Head, Dual Control	S	S					
Shower/Tub w/Wall Surround, Flexible Shower Head, Dual Control	S			S	S	S	S
Shower Door Pleated, w/Track	S	S	S	S	S	S	S
Sink Rectangular, Molded Soap Dishes				S			
Sink Oval, Ledge Back	S	S		S	S	S	S
Skylight w/Light (Shower Area)	S	S	S	S	S	S	S
Toilet (Residential Height), & Tissue Holder	S	S	S	S	S	S	S
Towel Bars	S	S	S	S	S	S	S
Towel Ring(s)	S	S		S	S		

EXTERIOR

	Sunrise SE			Sunrise			
	26P	29A	31B	30A	32T	33V	35C
Awning Rail w/Gutter	S	S	S	S	S	S	S
Awning (Patio)*	O	O	O	O	O	O	O
Bumpers Front: Integrated into Front Cap, Rear: Aluminum w/End Caps	S	S	S	S	S	S	S
Entrance Door w/Screen Door Latch & Deadbolt	S	S	S	S	S	S	S
Entrance Door Step (Electric) w/Door Jamb Switch, Single	S	S	S				
Entrance Door Steps (Electric) w/Door Jamb Switch, Double				S	S	S	S
Ext. Wash Station w/Water Pump Switch	S	S	S	S	S	S	S
Holding Tanks Heated	S	S	S	S	S	S	S
Ladder	S	S	S	S	S	S	S
Lower Exterior Paint				S	S	S	S
Outlet 110-V, Curbside	S	S	S	S	S	S	S
Porch Light w/Int. Switch	S	S	S	S	S	S	S
Sewer Hose & Storage Compartment	S	S	S	S	S	S	S
Storage Compartments w/Trunk Liner, Locking Doors, Single Paddle Latch	S	S	S	S	S	S	S
Trailer Towing Package w/Hitch (5,000 lb. Rating)	S	S	S	S	S	S	S
Trunk* Compartment, Rear				S	S	S	S
Water Tank, Gravity Fill Door Lockable	S	S	S	S	S	S	S
Water Hook-Up City	S	S	S	S	S	S	S
Wheel Covers & Rear Mud Flaps	S	S	S	S	S	S	S
Wheel Liners Stainless Steel	O	O	O	O	O	O	O

SYSTEMS

	Sunrise SE			Sunrise			
	26P	29A	31B	30A	32T	33V	35C
Air-Conditioner Roof, 14,800-BTU	S	S	S	S	S		
Air-Conditioners* Roof, Front/Rear: 13,500/13,500-BTU				O	O	S	S
Air-Conditioners (2)* Roof, High Efficiency w/PowerLine Energy Management System					O	O	O
Batteries (2) Deep Cycle RV	S	S	S	S	S	S	S
Electrical Control Center 110-V AC Breakers, 12-V DC Fuses w/45-Amp. Integral Power Converter	S	S	S	S			
Electrical Control Center 110-V AC Breakers, 12-V DC Fuses w/Remote Mounted 45-Amp. Power Converter					S	S	S
Furnace (Suburban®) Ducted, Low Profile, 30,000-BTU	S	S					

	Sunrise SE			Sunrise			
	26P	29A	31B	30A	32T	33V	35C
Furnace (Suburban) Ducted, Low Profile, 35,000-BTU			S	S	S	S	
Furnace (Suburban) Ducted, Low Profile, 40,000-BTU						S	
Generator Prep Kit Fuel Line, 12-V Wiring	S	S	S	S	S	S	S
Generator* (Onan® Emerald™) 4,000-Watt			O	O			
Generator* (Onan Microlite™) 4,000-Watt	O	O		O			
Generator* (Onan Emerald) 5,000-Watt			O	O	O	O	
Generator* (Onan Emerald) 6,500-Watt			O	O	O	O	
Holding Tank Flushing System Black Tank Only					S		
Inverter* 130-Watt for TV/VCR	O	O	O	O	O	O	O
LP Tank Permanent Mount w/Gauge	S	S	S	S	S	S	S
Monitor Panel Water, Holding & LP Tank Levels, Battery Condition Gauge, Water Heater Ignition Switch w/Pilot Indicator Light, Water Pump Switch, Located in Galley	S	S	S	S	S	S	S
Power Cord 30-Amp.	S	S	S	S	S	S	S
Service Center (Electrical) Cable TV Input, Power Cord				S	S	S	S
Service Center Provides Access to Sewer Drainage Valves, Ext. Shower, City Water Hook-Up	S	S	S	S	S	S	S
Water Heater (Atwood®) 6-gal., Elec. Ignition, Motoraid & Rear Auto. Heater	S	S	S	S	S	S	S
Water Heater Winterization By-Pass Valve Manual	S	S	S	S	S	S	S
Water Pump (Demand)	S	S	S	S	S	S	S
Water System Winterizing Valve Manual	S	S	S	S	S	S	S
Water Tank Drain	S	S	S	S	S	S	S

SAFETY

	Sunrise SE			Sunrise			
	26P	29A	31B	30A	32T	33V	35C
3-Point Cab Seat Belts	S	S	S	S	S	S	S
Assist Bar Interior, Metal				S	S	S	S
Assist Handle Interior Wood, Exterior Metal*	S	S	S				
Assist Handle* Exterior Acrylic w/Logo				S	S	S	S

	Sunrise SE			Sunrise			
	26P	29A	31B	30A	32T	33V	35C
Assist Strap Interior	S	S	S				
Carbon Monoxide Detector/Alarm, Fire Extinguisher (10-B.C.), Ground Fault Interrupter, LP Leak Detector/Alarm, Smoke Detector/Alarm	S	S	S	S	S	S	S
Escape Window	S	S	S	S	S	S	S
Lap Belts in Designated Areas	S	S	S	S	S	S	S
Rear High Mount Brake Light	S	S	S	S	S	S	S
Windshield Laminated Safety Glass	S	S	S	S	S	S	S

WARRANTY

	Sunrise SE			Sunrise			
	26P	29A	31B	30A	32T	33V	35C
12-Month/15,000-Mile Basic Warranty, 36-Month/36,000-Mile Warranty on Structure*, 10-Year Limited Parts & Labor Warranty on Roof	S	S	S	S	S	S	S

△ The Sunrise Series floorplans feature a widebody design — over 96". In making your purchase decision, you should be aware that some states restrict access on some or all state roads to 96" in body width. Before making your purchase decision, you should confirm the road usage laws in the states of interest to you.

* Not all items available in combination. See dealer for details.

NA Not Available

◇ Capacities shown are tank manufacturer's listed water capacity (W.C.). Actual filled LP capacity is 80% of listing due to overfilling prevention device on tank.

• The height of each model is based on the curb weight of a typically equipped unit on the standard chassis. The actual height of your vehicle may vary by as much as 2" depending on chassis or equipment variations.

S Standard

O Optional

FP Feature Pending

** See your dealer for complete warranty documentation information.

Winnebago Industries' continuing program of product improvement makes specifications, equipment, model availability and prices subject to change without notice. Comparisons to other motor homes are based on the most recent information available.

Sunrise Series

A Few More Details



WIT Club



Membership in the Winnebago Itasca Travelers (WIT) Club is a great way to meet people and get even more enjoyment from your motor home. As an owner of a Winnebago Industries RV, you can join the Club and take advantage of some great services — like professional travel planning and mail forwarding — and participate in some great rallies and caravans. Call 1-800-643-4892 ext. 1 for more information.

TripSaver

In a recent RVDA survey, Winnebago Industries was voted number one in the industry for service, parts, and warranty support by dealers across the country. And who would know better than the people who service motor homes? We believe a large part of our service success is due to our commitment to getting you back on the road as soon as possible after experiencing a mechanical emergency. That's why we created TripSaver. This industry-leading program guarantees that qualifying, in-stock emergency warranty repair parts will be shipped directly from the factory within 24 hours. Furthermore, a Winnebago Industries built part or component that is not in stock will be specially manufactured and shipped air freight.



TRIPSaver
Emergency-Shipped Parts

Warranty Protection

All new Itasca motor homes include a 12-month/15,000-mile basic protection plan, 36-month/36,000-mile warranty protection on lamination and slideroom construction and assemblies, and a standard 10-year limited parts and labor warranty on the roof. As if those aren't enough, we also stand behind most major appliances and equipment we install (a rarity in the industry) so you can count on the convenience of one-stop service for warranty repairs. It all adds up to some of the most comprehensive warranty programs in the industry backed by the most recognized motor home manufacturer in the world.



Visit us at
www.winnebagoind.com

Read this guide.

To learn more about what separates our motor homes from others, ask for this free guide next time you visit your Winnebago Industries dealer. It explains our superior manufacturing process. Use it to learn more about important safety and quality considerations as you shop for the motor home that's best for you.



For Sales and Service Information Contact:



©1999 Winnebago Industries, Inc.

Printed in USA

Seat belts are your most important hookup. Always buckle up.