



04 MONARCH SE *by Monaco*

# 04 MONARCH SE

WELCOME ABOARD.







## JOIN THE FAMILY, AND YOU'LL RIDE ON THE STRENGTH OF OUR ENTIRE COMPANY.

Welcome to Monaco — welcome to the 2004 Monarch SE. If this is your first look at a Monaco gas coach, we'd like to show you a few of the highlights designed to give you the best possible RV experience. Inside the coach, you're greeted by your choice of three beautiful color schemes and three styles of gorgeous woodwork. Our designers have put together a sophisticated combination of details, including crown molding, wood slide-out fascia, decorative wall board and raised panel cabinet doors with brass hardware. And to help keep your coach looking great for years to come, we've added new carpeting with Scotchgard™ stain release pad, as well as Teflon® fabric protection.



① *The 34SBD **KITCHEN/LIVING ROOM** in Paradise Bay with Vintage Oak woodwork.*

② The newly styled automotive dash features a beige **GRID INSTRUMENT PANEL** and **TWO-TONE VINYL**. Other conveniences you'll enjoy include a **FRONT PRIVACY DRAPE** with tie backs, a **CENTER CONSOLE** with **SNACK TRAY**, **CO-PILOT SIDE CUP HOLDERS** with **MAGAZINE RACK**, and a **DASH WORKSTATION**.

③ The remarkable kitchen area welcomes you with style and conveniences. This year, we've added handy details throughout, such as a **PANTRY** with **ADJUSTABLE SHELVES** (N/A on the 32PBD), **COUNTERTOP EXTENSIONS** (on the 34PDT and 36PED), and **OVERHEAD CABINETS** with adjustable shelf. Other highlights include **TOE KICKS** in the base cabinets and **LINOLEUM FLOORING** in the kitchen and entryway (Wilsonart® plank flooring is standard on the 34PDT).

## SIMPLY PUT, THIS IS A GREAT PLACE TO LIVE.

The Monarch SE gives you a wide range of versatile double and triple slide-out floorplans, including an exciting bath-and-a-half model. You'll enjoy mealtimes at the arched back wood booth dinette with sliding tabletop and storage drawers — or, the freestanding dinette with chairs and a wall cabinet, standard on the 34PDT and 36PED, and optional on all others. Over the cockpit, you can see the 27" stereo color TV (on most floorplans), which can be accompanied by an optional VCR, DVD player and digital satellite system prep. Another option allows you to have the TV and VCR wired through the ceiling speakers, for superior audio.

- ① A beautiful **BEVELED MIRROR** reflects the 34 SBD bedroom's warm ambience. A 19" color TV with remote control is available as an option. Shown are Paradise Bay fabrics with Vintage Oak woodwork.
- ② A **QUEEN BED WITH NIGHTSTANDS** is standard in the Monarch SE. And the attractive bedspread comes with two decorator pillows. Shown here is the 34SBD in Chateau Stone with Vintage Oak.
- ③ Our optional **HIDE-A-BED** is a cozy sofa by day and a roomy double bed by night, adding sleeping space and increasing the versatility of your coach's floorplan.

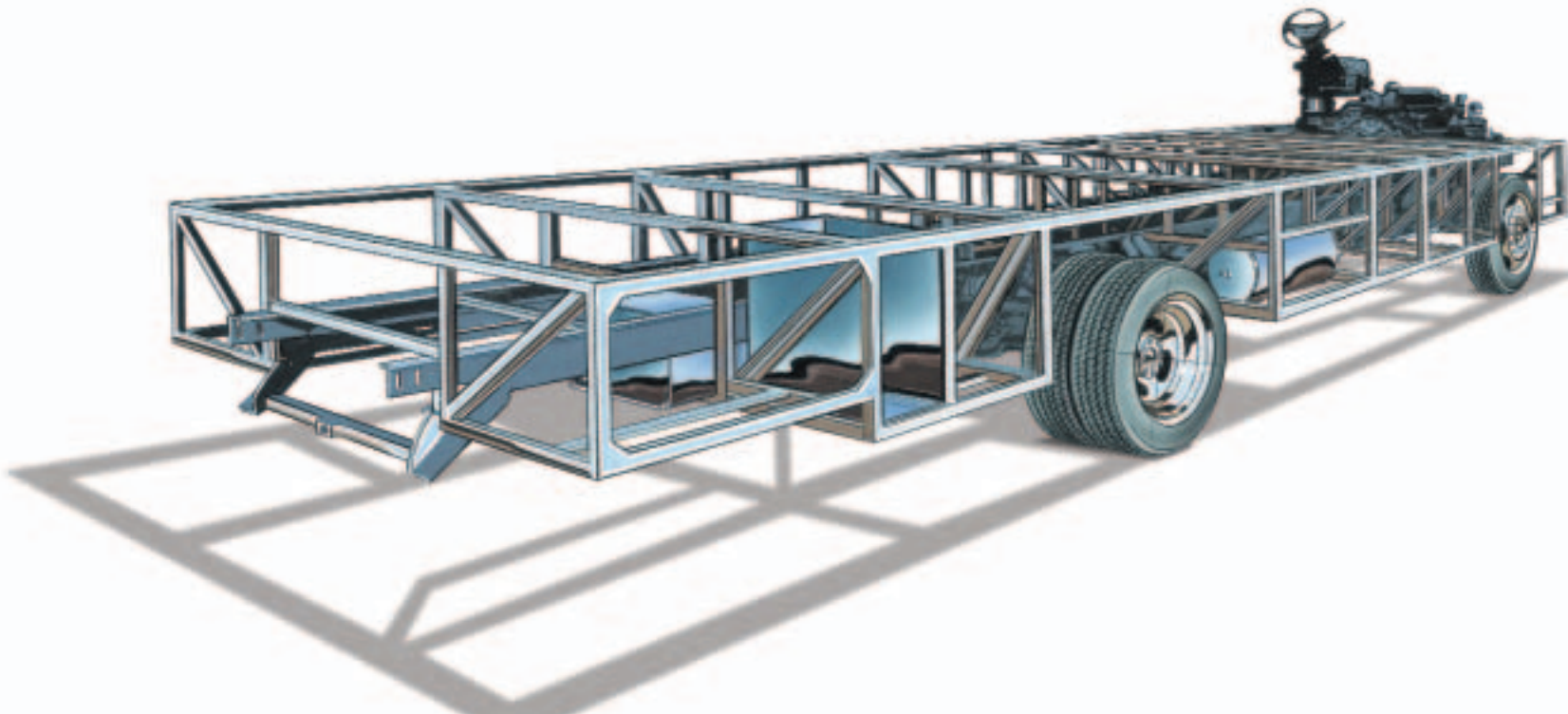




## OUR RECIPE FOR COMFORT AND SAFETY.

---

It takes dozens of meticulous details to create a coach that's worthy of the name Monaco. And each of them is held up to the highest standards while being constantly re-evaluated — both for quality and for innovation. For us, that means setting the bar higher and higher with every year. And for you, it means your Monaco coach will always be a step ahead of the rest. If you'd like to learn more, a dealer near you will be happy to show you firsthand the details that add up to the Monaco difference. Or, visit our website at [www.monacocoach.com](http://www.monacocoach.com)



### **MONARCH SE SMARTSTRUCTURE FEATURES:**

- The SmartStructure provides superior strength, balance and weight distribution while enabling Monaco engineers to make maximum use of space. SmartStructure is custom built to each floorplan and fully integrated with your choice of Workhorse or Ford chassis.
- A hitch receiver with connector provides plentiful towing capacity.
- Propane tank, water heater and batteries are accessible for easy use and service.
- The fully welded steel truss system provides a stronger platform than other types of construction and easy access to electrical, plumbing and vehicle components for easy maintenance.
- The SmartStructure technology allows for more under-the-coach storage, including easy access with the EasyStor slide-out system.
- Anti-lock brakes help you stay in control.

**ROOF LAYERS: (TOP TO BOTTOM)**

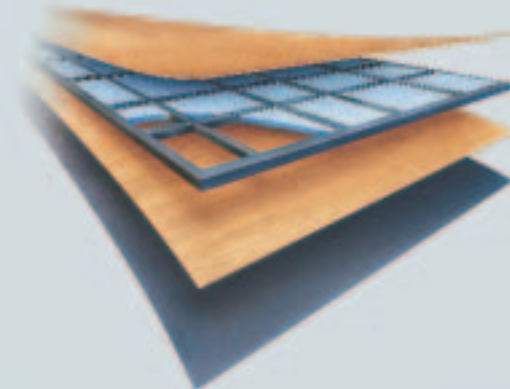
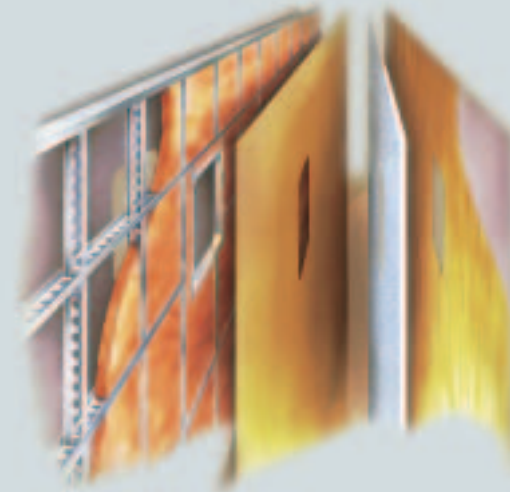
- a. Peaked aluminum roof
- b. Luaun backing
- c. Thick, tapered bead foam insulation
- d. Aluminum double I-beam superstructure filled with fiberglass insulation
- ① e. Vapor barrier
- f. Structure foam: thermal insulative barrier
- g. 1/2" bead foam insulation
- h. Foam padding for extra insulation
- i. Padded vinyl ceiling

**WALL LAYERS: (LEFT TO RIGHT)**

- a. Smooth .063 aluminum (gel coat fiberglass is optional)
- b. Interlocking C-Channel filled with 1-1/2" fiberglass insulation glued in place so it doesn't sag or leave spaces uninsulated
- ② c. Vapor barrier
- d. Bead foam adds comfort, saves energy and provides a thermal insulative barrier
- e. Interior paneling

**FLOOR CONSTRUCTION: (BOTTOM TO TOP)**

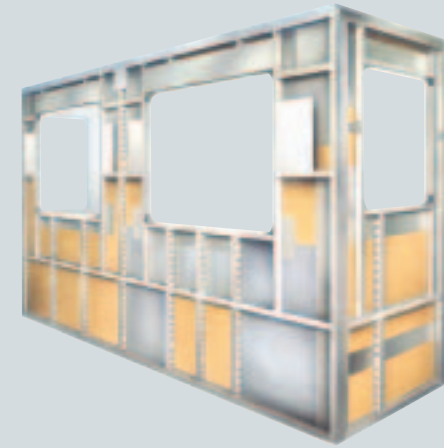
- a. Darco
- b. Luaun
- ③ c. Blue foam
- d. 1-1/2" steel tube
- e. 5/8" Structurwood™



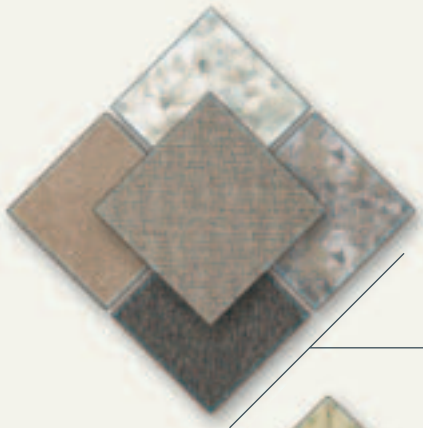
## EXTERIOR HIGHLIGHTS.

Each Monaco coach is designed to turn heads wherever you go, with sleek, contemporary styling and a distinctive appearance that reflects the quality you'll find throughout the coach. You'll appreciate the durable exterior of the smooth aluminum walls — or, if you prefer, the optional gel coat fiberglass walls — and the painted mask and skirt with vinyl graphics.

- ① Our exclusive **SLIDE-OUT** design is the strongest and most reliable you'll find anywhere. It features our exclusive multi-layer construction to give you maximum insulation and to reduce the chance of warping, twisting or shifting.
- ② The front of the coach features a new **MOLDED FIBERGLASS CAP** with **INTEGRATED BUMPER** and newly styled headlights with turn signals.
- ③ The Monarch SE features our exclusive **EASYSTOR COMPARTMENTS** that move out with the slide-outs for easy loading and unloading. In addition, our new **STREAMLINED BAGGAGE DOORS** include secure, easy-to-open integrated single-handle latches.







CHATEAU STONE



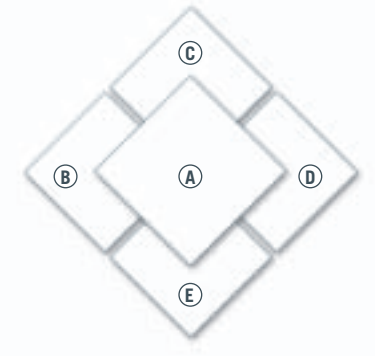
PARADISE BAY



VALLEY GLEN

## EXTERIOR COLORS, FABRICS AND WOODS

For 2004, our designers have selected exquisite fabric combinations for each model of the Monarch SE. Now, it's your turn to choose.



### FABRIC SWATCHES

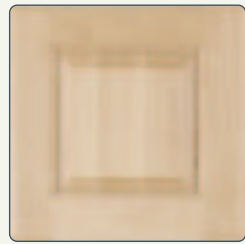
- A. Sofa
- B. Carpet
- C. Bedspread
- D. Dinette Chairs
- E. Accent



Vintage Oak



Regal Cherry



Maple

*In addition, Wilsonart® plank flooring is optional in the kitchen and bathroom, in a selection of styles to match your choice of woodwork.*



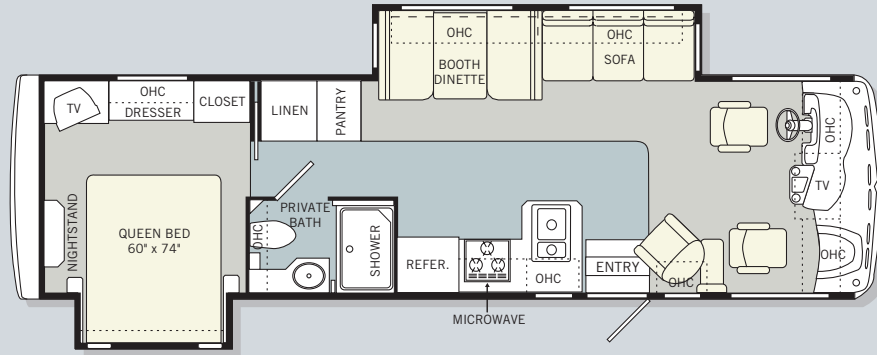
**BETTER  
STAIN  
PROTECTION**

Manufactured in, not added on. 3M Scotchgard™ Carpet Stain Release is applied during the carpet manufacturing process for a higher level of protection. Dupont Teflon® soil repellent is applied to virtually all upholstery fabric during the finishing process for superior coverage.\*

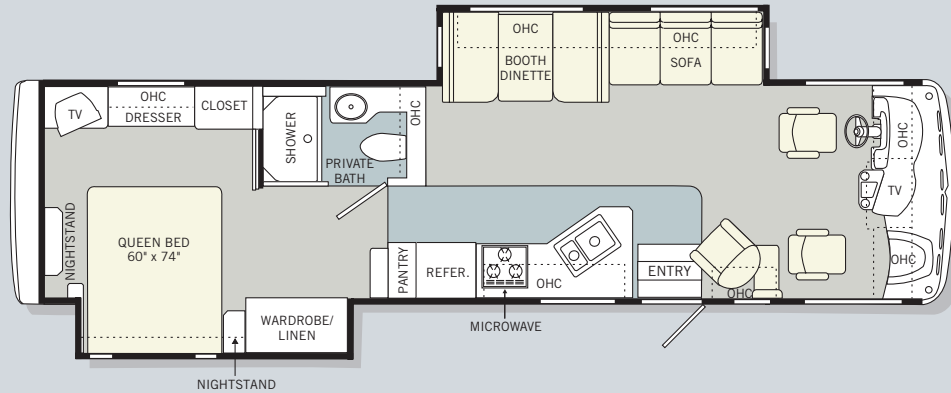
\*Brand and application of carpet or upholstery fabric protection may vary depending on date recreational vehicle was manufactured.

## 04 FLOORPLANS

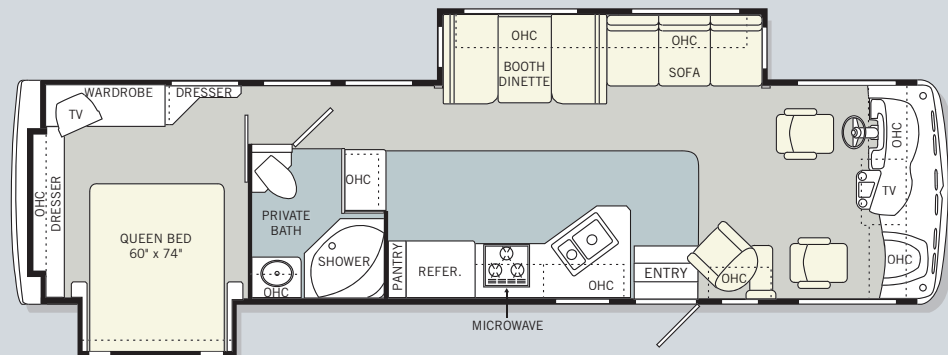
Monaco is proud to offer you a wide range of floorplans to suit your lifestyle. As you can see here, you have numerous optional features from which to choose.



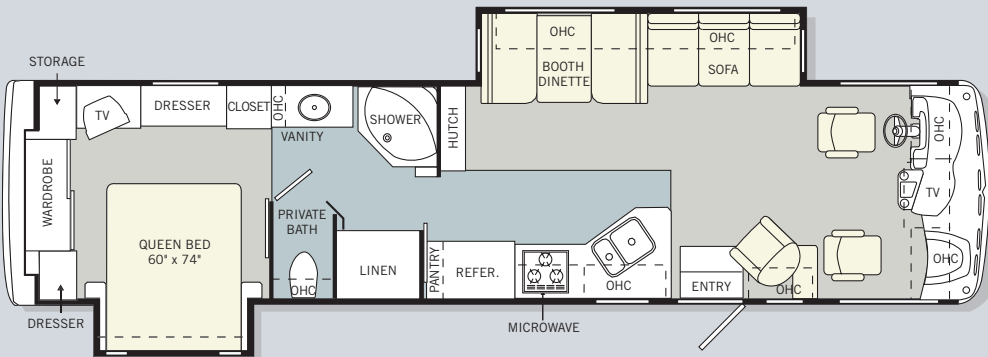
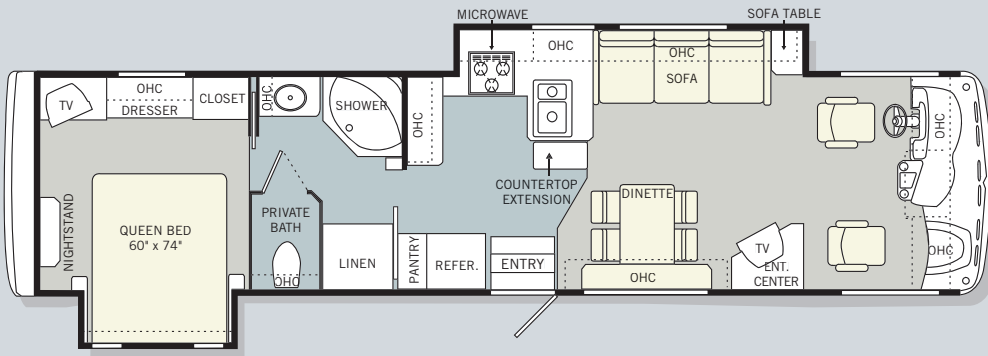
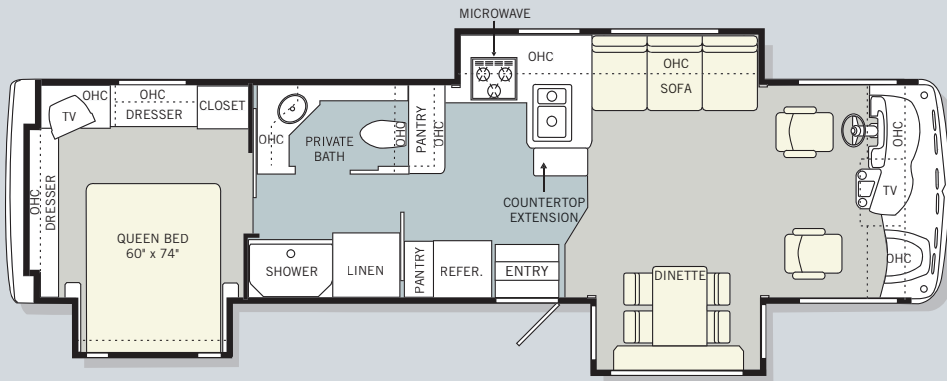
32PBD



34SBD



34PBD



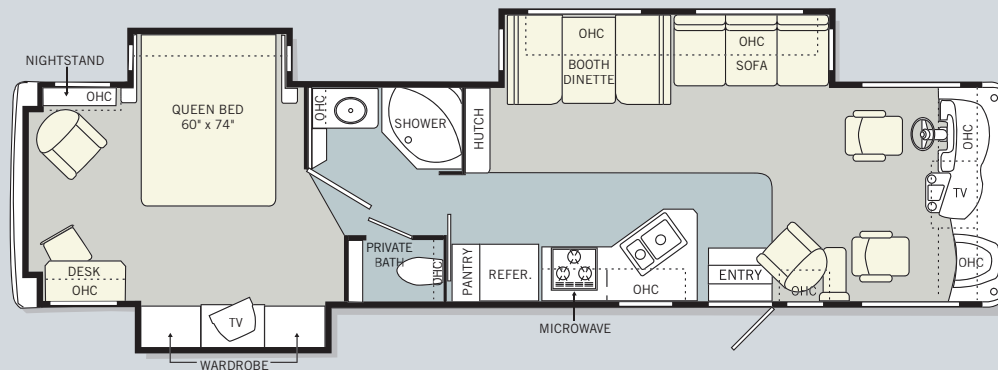
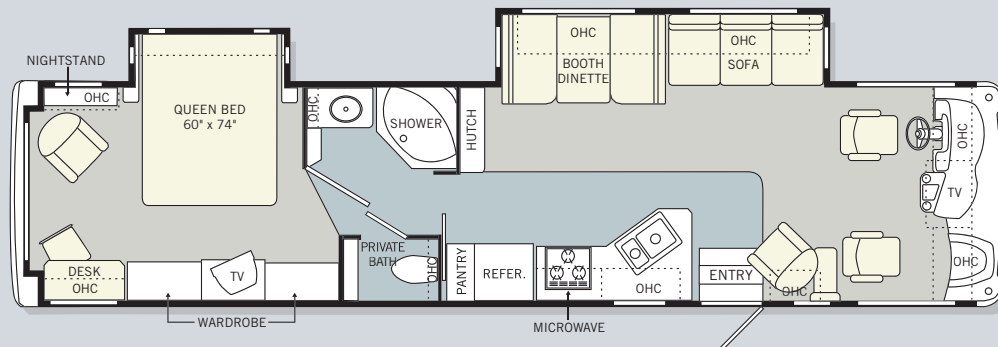
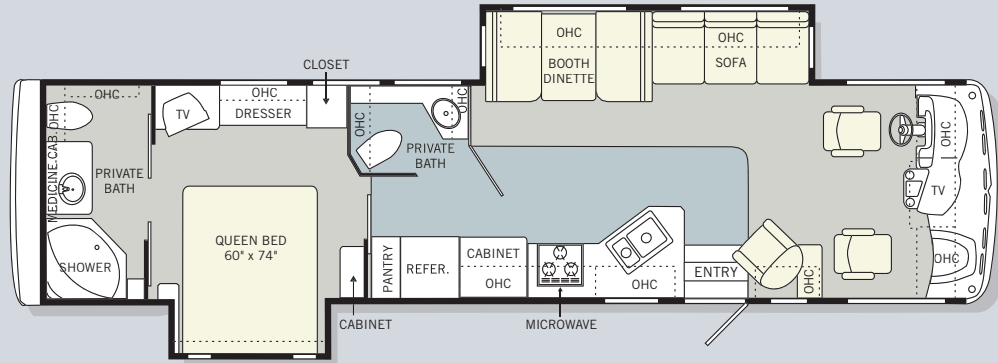
Find all the latest product news and updates online: [monacocoach.com](http://monacocoach.com)

## 04 FLOORPLANS, CONTINUED

Each year, our designers work to find new ways to maximize your living area and create valuable storage space.



Find all the latest product news and updates online:  
[monacocoach.com](http://monacocoach.com)





Find all the latest product news and updates online: [monacocoach.com](http://monacocoach.com)

## 2004 SPECIFICATIONS

<b>FORD WEIGHT RATINGS (LBS.)</b>	<b>32PBD</b>	<b>34SBD</b>	<b>34PBD</b>	<b>34PDT</b>	<b>36PED</b>	<b>36WDD</b>	<b>36DBD</b>	<b>37PCD</b>	<b>37PCT</b>
Gross Vehicle	20,500	22,000	22,000	22,000	22,000	22,000	22,000	22,000	22,000
Gross Combined	25,500	26,000	26,000	26,000	26,000	26,000	26,000	26,000	26,000
Front Gross Axle	7,000	7,500	7,500	7,500	7,500	7,500	7,500	7,500	7,500
Rear Gross Axle	13,500	14,500	14,500	14,500	14,500	14,500	14,500	14,500	14,500
<b>WORKHORSE WEIGHT RATINGS (LBS.)</b>	<b>W-20</b>	<b>W-22 OPTION</b>	<b>W-22</b>	<b>W-22</b>	<b>W-22</b>	<b>W-22</b>	<b>W-22</b>	<b>W-22</b>	<b>W-22</b>
Gross Vehicle	20,700	22,000	22,000	22,000	22,000	22,000	22,000	22,000	22,000
Gross Combined	25,700	26,000	26,000	26,000	26,000	26,000	26,000	26,000	26,000
Front Gross Axle	7,500	8,000	8,000	8,000	8,000	8,000	8,000	8,000	8,000
Rear Gross Axle	13,500	14,500	14,500	14,500	14,500	14,500	14,500	14,500	14,500
<b>MEASUREMENTS</b>	<b>32PBD</b>	<b>34SBD</b>	<b>34PBD</b>	<b>34PDT</b>	<b>36PED</b>	<b>36WDD</b>	<b>36DBD</b>	<b>37PCD</b>	<b>37PCT</b>
Wheelbase	208"	228"	228"	228"	238"	238"	238"	242"	242"
Overall Length	32' 7"	34' 10"	34' 10"	34' 10"	36' 6"	36' 6"	36' 6"	37' 0"	37' 0"
Overall Height (with A/C, Ford)	11' 8"	11' 8"	11' 8"	11' 9"	11' 8"	11' 8"	11' 8"	11' 9"	11' 9"
Overall Height (with A/C, Workhorse)	11' 8"	12' 0"	12' 0"	12' 0"	12' 0"	12' 0"	12' 0"	12' 0"	12' 0"
Interior Height	6' 6"	6' 6"	6' 6"	6' 6"	6' 6"	6' 6"	6' 6"	6' 6"	6' 6"
Interior Width	94 1/2"	94 1/2"	94 1/2"	94 1/2"	94 1/2"	94 1/2"	94 1/2"	94 1/2"	94 1/2"
Exterior Width	100 1/2"	100 1/2"	100 1/2"	100 1/2"	100 1/2"	100 1/2"	100 1/2"	100 1/2"	100 1/2"
<b>TANK CAPACITY (GAL.)</b>	All tank capacities are estimated based upon calculations provided by the tank manufacturers and represent approximate capacities. The actual "usable capacity" may be greater or less than the estimated capacities based upon fabrication and installation of the tanks.								
Water Heater	10	10	10	10	10	10	10	10	10
Gray Tank	42	40	42	42	54	54	42/39	45	45
Black Tank	42	42	42	42	45	42	42/39	54	54
Fresh Tank	60	60	60	60	60	60	58	60	60
LP Tank <sup>1</sup>	24	24	24	24	24	24	24	24	24
Fuel Tank	75	75	75	75	75	75	75	75	75

<sup>1</sup> Actual filled LP capacity is 80% of listing due to safety shut-off required on tank.

## 2004 STANDARDS AND OPTIONS

### BODY CONSTRUCTION

Alumaframe® Superstructure  
Steel Cage Cockpit Construction  
Peaked Aluminum Roof with Fiberglass Insulation  
Smooth Aluminum Exterior Walls  
Front and Rear Molded Fiberglass Caps with Integrated Bumpers  
Steel Framed Floor on Steel Trusses

Laminated Structurwood™ Flooring  
Interior Paneling with 3/4" Insulation  
Foam Insulated Floor Framing with Luaun Backer  
One-Piece Engine Cover  
Power Heated Remote Exterior Mirrors  
Headlamps with Turn Signals

Streamlined Baggage Doors with Integrated Single Handle Latches  
EasyStor Slide-Out Compartments  
One-Piece Polyethylene Storage Compartment  
Wheel Mud Flaps  
Painted Mask and Skirt with Vinyl Exterior Graphics  
Rear Ladder  
Interior Rubber Entry Step

Exterior Double Entry Steps, Triple Entry Steps on W-22, Workhorse Chassis  
Undercoating

#### OPTIONS

Smooth Gel Coat Fiberglass Exterior Walls (N/A: 37PCT on Workhorse Chassis)  
Full Length Mud Flap

### COCKPIT

Fiberglass Automotive Dash with Beige Grid Instrument Panel and Two Tone Dash Vinyl  
CD Player/Radio with Four Speakers  
Multi-Positioned Sunvisors  
Front Privacy Drape with Tie Backs  
Rear Vision System Prep  
Intermittent Windshield Wipers  
Tilt Steering Wheel

Cruise Control  
Power Steering  
Electric Automotive Horn  
Center Console with Cup Holder and Snack Tray  
Side Cup Holders for Co-Pilot Seat with Magazine Rack Below  
Fabric Pilot and Co-Pilot Recliner Seats  
Carpeted Driver and Passenger Floor Mats

Dash Workstation  
Smoked Plexiglas® Cabinet Doors over Entertainment Center Systems  
Secure Front Cab over TVs with Steel Framing

#### OPTIONS

Six-Way Power Pilot Seat  
Six-Way Power Co-Pilot Seat

Soft Touch Vinyl Pilot and Co-Pilot Seats  
Rear Vision System  
Pilot and Co-Pilot Pull Down Sun Shades  
CB Radio Prep  
Driver's Side Door with Full Electric  
AM/FM Cassette (Deletes CD Player)

### APPLIANCES AND ACCESSORIES

Large Double-Door Refrigerator  
High-Output 3-Burner Cooktop  
Bi-Fold Range Cover  
Spacesaver Microwave with Touch Control  
27" TV Stereo Color TV with Remote Control (Centered in Cockpit Overhead) (Entertainment Center in 36PED 25" TV)  
TV Antenna with TV Jacks  
VCR Prep and Video Control Box with Booster  
Dual Exterior Hook-Ups for DSS Dish and Cable

Cable TV Hook-Up and Telephone Jacks  
Exterior Gas Line Hook-up Prep for LP Accessories

#### OPTIONS

Large Double-Door Refrigerator with Ice Maker  
Large Four-Door Refrigerator with Ice Maker (N/A with Roll-Out Pantry) (N/A: 32PBD)  
High-Output Three-Burner Range with Oven

Spacesaver Convection Microwave with Touch Control

Washer/Dryer Prep (Requires 50 Amp Service Option) (32PBD, 34PDT, 36PED, 36WDD, 36DBD)

Combination Washer/Dryer (Requires Washer/Dryer Prep Option) (N/A: 34PDT with Workhorse Chassis) (32PBD, 34PDT, 36PED, 36WDD, 36DBD)

Stereo TV and VCR Wired Through Ceiling Speakers

19" Color TV with Remote Control in Bedroom

VCR

DVD Player

Digital Satellite System Prep

Exterior Entertainment Center, CD Player Radio with Two Speakers (N/A: 34PDT)

Fireplace (Requires 50 Amp Service Option) (36PED)

## INTERIOR

Vintage Oak Cabinetry  
Raised Panel Cabinet Doors on Overhead Cabinets, Flat Panel Doors on Base Cabinets and Wardrobes  
Cabinet End Panels  
Black ABS Refrigerator Insert  
Decorative Wall Board  
Wallpaper Border Kitchen, Bath, and Bedroom Walls  
Self-Supporting Top Hinged Overhead Storage Doors and Positive Catches on all Other Doors  
Low Friction Roller Drawer Guides  
Wood Interior Grab Handle on Cabinet at Entry Door  
Brass Finished Entry Rail for Step Well  
Brass Cabinetry Hardware and Bath Accessories  
Integrated Cup Holder in Slide-Out next to Sofa  
Laminate Kitchen Countertop with Laminated Perm-Edge, Stainless Steel Sink, Chrome Faucet and Two Sink Covers

Recessed Kitchen Countertop Extensions (34PDT, 36PED)  
Toe Kicks, Kitchen and Bath Base Cabinets  
Laminate Bathroom Countertop with Laminate Perm-Edge  
All Other Countertops Laminate with Perm-Edge  
Kitchen Overhead Cabinets with Adjustable Shelf  
Kitchen Pantry with Adjustable Shelves next to Refrigerator (N/A: 32PBD)  
Linoleum Flooring in Kitchen and Entryway (N/A: 34PDT)  
Wilsonart® Plank Flooring in Bath, Kitchen and Entryway (34PDT)  
Linoleum Flooring in Bathroom (N/A: 34PDT)  
Wilsonart® Plank Flooring in Rear Bath (36DBD)  
Upgraded Nylon Carpeting with Scotchgard™ Stain Release Pad in Living Area and Bedroom  
Soft Touch Padded Vinyl Ceiling  
Wood Slide-Out Fascia with Fabric Inserts

Arched Beveled Living Area or Bedroom Mirror, with Border under Mirrors Living Area Location (32PBD, 34SBD, 36DBD, Bedroom in 37PCT)  
Picture in Living or Bedroom Area, (34PDT, 36PED Side of Refer Wall, 32PBD, 34PBD, BR Bath Wall Side of Bed, 34SBD End of Shower Wall) (N/A: 36DBD, 37PCD, 37PCT)  
Bath Door with Accent Trim on Hallway Side  
Wood Trim for Bath Door Opening Hallway Side  
Magazine Rack Bathroom (36PED, 36WDD, 36DBD, 37PCD, 37PCT)  
Crown Molding in Bedroom and Living Area on All Open Walls  
Medicine Cabinet with Adjustable Shelves  
Bathroom Lav Base Mirror with Wood Frame  
Towel Rack on Back of Bath Door  
Two Towel Rings in Bathroom  
Accent Mirror on Rear Wall, Wall Border under Mirror (N/A: 36DBD, 36WDD, 37PCD, 37PCT)

Rear Wardrobe Closet with Deluxe Mirror Frames (Brass Finish 36WDD)  
Bedsread with Two Decorative Pillows  
Fabric Headboard  
Day/Night Pleated Shades in Living Area and Blackout Shades in Bedroom  
Mini Blinds in Kitchen and Bathroom  
Soil Repellant on Fabric, Teflon® Fabric Protection  
Valance above Entry Door with Clock

## OPTIONS

Decors: Valley Glen, Paradise Bay, Chateau Stone  
Wood Choice: Regal Cherry and Maple  
Laminate Plank Flooring in Kitchen, Bath and Entryway (N/A: 34PDT)  
Roll-Out Pantry next to Refrigerator with Four Baskets (N/A with Four-Door Refrigerator Option) (N/A: 32PBD)  
Hardwood Raised Panel Doors on Refrigerator



## FURNITURE

Queen Bed with Nightstands  
Party Table behind Co-Pilot Seat  
(N/A: 34PDT, 36PED)

Arched Back Wood Booth Dinette  
with Side Sliding Table Top and  
Drawers (N/A: 34PDT, 36PED)

Freestanding Dinette with  
Wall Cabinet, Two Freestanding  
Chairs and Two Folding Chairs  
(34PDT, 36PED)

Fabric Jackknife Sofa, Two Pillows  
on All Sofas

Fabric Swivel Barrel Chair  
(N/A: 34PDT, 36PED)

Fabric Swivel Barrel Chair  
and Desk Chair Bedroom  
(37PCD, 37PCT)

### OPTIONS

Fabric Hide-A-Bed Sofa with  
Two Pillows (N/A: 36PED)

Fabric Hide-A-Bed with Footrest  
and Two Pillows (36PED)

Fabric Hide-A-Bed Sofa with  
Air Mattress and Two Pillows  
(N/A: 36PED)

Fabric Hide-A-Bed with  
Footrest, Air Mattress  
and Two Pillows (36PED)

Soft Touch Vinyl Hide-A-Bed Sofa  
with Two Pillows (N/A: 36PED)

Soft Touch Vinyl Hide-A-Bed with  
Footrest and Two Pillows (36PED)

Soft Touch Vinyl Hide-A-Bed Sofa  
with Air Mattress and Two Pillows  
(N/A: 36PED)

Soft Touch Vinyl Hide-A-Bed with  
Footrest, Air Mattress and Two  
Pillows (36PED)

Fabric Sleeper L-Sofa with Drawer  
IPO Jackknife Sofa (36PED)

Deletes Wall Cabinet in Dinette  
Fabric Electric Sofa IPO  
Jackknife Sofa (N/A: 36PED)

Fabric Swivel Recliner IPO Fabric  
Barrel Chair (N/A: 34PDT, 36PED)

Soft Touch Vinyl Swivel Recliner  
Chair IPO Fabric Barrel Chair  
(N/A: 34PDT, 36PED)

Fabric Swivel Barrel Chair  
IPO Desk Chair Bedroom  
(37PCD, 37PCT)

Bedroom Desk (N/A: 34PBD,  
37PCD, 37PCT)

Freestanding Dinette with Wall  
Cabinet, Two Freestanding  
Chairs and Two Folding Chairs  
(N/A: 34PDT, 36PED)

## ELECTRICAL SYSTEMS AND LIGHTS

30 Amp 120V Distribution Panel  
and Power Cord

55 Amp Electronic  
12V Power Converter

Onan® 5.5 kW Gas Generator

Two 6V House Batteries

Battery Disconnect Switches

12V and 110V Outlet  
in Cockpit Area

Porch Light

Exterior Power Entry Step  
with Light

Interior Step Well Entry Step Lights

Water Pump Switch in Service Bay  
Area and Bath

Lights in Outside  
Storage Compartments

120V Receptacles in Outside  
Storage Compartment

Underhood Utility Light

Computer Hook-Up with Phone  
Jack in Dinette Area

Pilot and Co-Pilot Map Lights

Systems Control Center in Hallway

Fluorescent Lights under  
Kitchen Overhead

Fluorescent Ceiling Lights Throughout

Fluorescent Ceiling Lights inside  
Living Area Slide-Out House

Decorative Brass Lighting Living  
Room Wall Light, Dinette  
Overhead, Cosmetic Vanity Light

Halogen Lights under Living  
Room and Dining Room  
Overhead Cabinets

Bullet Lights over Bed Brass Finish  
with His and Hers Switches

Decorative Side Lights inside  
Bedroom Slide-Out on End Walls

### OPTIONS

50 Amp Service with Energy  
Management System

50 Amp 120V Distribution  
Panel and Cord (Required  
with Fireplace Option)

130 Watt Inverter

Storage Compartment Tank  
Monitor Gauge



## PLUMBING AND LP SYSTEMS

Kitchen Stainless Steel Sink with Single Lever Chrome Faucet

Separate Chrome Faucet for Filtered Water

Bath Lav Faucet Single Handle Brass Finish

Demand Water System and Water Pump

10 Gallon LP Gas/Electric Water Heater with Electronic Ignition, DSI

Winterization Valving System

Water Heater By-Pass Valve

Toilet with Sprayer

No-Fuss Flush Holding Tank Rinsing System

Insulated Systems Compartment with Easy Access to Hook-Up

Shower inside Wet Bay with Hot/Cold Water

Gravity and Pressurized Water Fill

Contained Storage Area for Sewer Hose

One-Piece Fiberglass Shower

Shower Light

Brass Framed Shower Door with Obscure Glass

### OPTIONS

Bath Tub

## HEATING, VENTS, AND AIR CONDITIONING

One 13.5M BTU Air Conditioner with Ducted Air and Analog Wall Thermostat (32PBD, 34SBD, 34PBD, 34PDT)

One 13.5M BTU and One 11.0M BTU Air Conditioner with Ducted Air and Wall Analog Thermostat (36PED, 36WDD, 36DBD, 37PCD, 37PCT)

35M BTU Electronic Ignition Furnace

Electronic Dash AC/Heat Climate Control System

In-Floor Ducted Heating System with Metal Floor Registers

Manual Roof Vent Kitchen (36PED, 36WDD, 36DBD, 37PCD, 37PCT)

Manual Roof Vent Living Area (32PBD, 34SBD, 34PBD, 34PDT)

12V Roof Vent Bathroom

Manual Roof Vent Bedroom (32PBD, 34SBD, 34PBD, 34PDT)

Metal Floor Registers (Antique Brass)

### OPTIONS

Dual 13.5M BTU Air Conditioner, Requires 50 Amp Service (36PED, 36WDD, 36DBD, 37PCD, 37PCT)

One 13.5M BTU and One 11.0M BTU Air Conditioner (32PBD, 34SBD, 34PBD, 34PDT)

12V Attic Fan Kitchen (36PED, 36WDD, 36DBD, 37PCD, 37PCT)

12V Attic Fan Living Area (32PBD, 34SBD, 34PBD, 34PDT)

12V Wet Bay Heater

## WINDOWS, DOORS, AND AWNINGS

Radius Flush Mount Single Pane Safety Glass Dark Tinted Slider Windows

Radius Entrance Door with Clear Glass, Roller Shade, Screen Door and Anti-Skid Steps

Two Interior Grab Handles and One Exterior Grab Handle

Topper Slide-Out Awnings Living Area and Bedroom

Protecta Glaze Tinted Plexiglas® Skylight in Bathroom

Awning Rail

### OPTIONS

Radius Flush Mount Dual Pane Safety Glass Dark Tinted Slider Windows

Texture Vinyl Patio Awning

Carefree® Automatic Patio Awning

Texture Vinyl Window Awnings Living Area Slide-Out House Windows

Texture Vinyl Side Window Awning Bedroom (N/A: 37PCD, 37PCT)

## SAFETY

Fire Extinguisher

Deadbolt Lock on Entrance Door

120V GFI Protected Circuit (Kitchen, Bath and Exterior)

LP Gas Detector

Smoke Detector

Carbon Monoxide Detector

Pilot and Co-Pilot Three-Point Seat Belts

Third Brake Safety Light

Egress Windows

## FORD CHASSIS/ENGINE/SUSPENSION

Electronic Fuel Injection Gasoline Engine 6.8L V10  
Cubic Inch Displacement 415"/6.8L  
Torque at 3250 RPMs 425 lbs./ft.

4-Speed Automatic Transmission with Overdrive  
Fuel Tank Capacity 75 Gallon  
130 Amp Alternator

Rear Axle Ratio 5.38:1  
Radial Tires 245/70RX19.5F  
Chrome Wheel Covers  
Leaf Spring Suspension

ABS Brake System  
Hitch Receiver with Connector  
SmartStructure

## WORKHORSE CHASSIS/ENGINE/SUSPENSION

Electronic Fuel Injection Gasoline Engine 8.1L V8  
Cubic Inch Displacement 496"/8.1L  
Torque at 340 HP 455 lbs./ft.  
5-Speed Automatic Transmission with Overdrive

Fuel Tank Capacity 75 Gallon  
145 Amp Alternator  
Rear Axle Ratio 5.38:1  
Radial Tires 235/80R 22.5G (All except 32PBD 245/70R 19.5F)  
Stainless Steel Wheel Liners

Leaf Spring Suspension  
ABS Brake System  
Hitch Receiver with Connector  
SmartStructure

## OPTIONS

Manual Hydraulic Leveling System  
Workhorse W-22 Chassis Rated 22,000 Lb., Radial Tires 235/80R 22.5G, 4,000 Lb. Hitch (32PBD)  
Stainless Steel Wheel Simulators (Standard on Workhorse Chassis)

The actual overall length of the recreational vehicle may differ from that indicated in the brochure due to variances in the manufacturing process and/or installed components. The actual length may be greater or less than that indicated. Due to the large variety of options and floorplan arrangements available to our customers, actual weights for each unit can differ significantly. Monaco Coach provides a weight sticker on each unit we produce which includes that unit's tank capacities and approximate weight. Consult your local Monaco Coach dealer for unit availability and further information. Your towed vehicle should be equipped with auxiliary brakes if the weight of the towed load exceeds 1,000 lbs. The information printed in this brochure reflects product design, fabrication, and component parts at the date of printing. The manufacturer reserves the right, at any time, to make changes in product design or material or component specifications as its sole option, without notice. This includes the substitution of components of a different brand or trade name which will result in comparable performance. All information printed in this brochure is subject to change after the date of printing. Some features shown or mentioned in this brochure are optional and may only be available in selected floorplans. Photographs may show props or decorations that are not standard equipment on Monaco Coach models. Monaco Coach, the Monaco logo and its design, are registered trademarks. All other products and company names are trademarks and/or registered trademarks of their respective holders. While the color of the motorhome's exterior and the interior fabrics depicted in this sales brochure are fair and reasonable depictions, the colors depicted may not be an exact match of the actual colors because of the variances in photo-processing and variances caused by inserting the photographs within the sales brochure. Due to product improvements, changes during the model year and/or transcription errors that may occur, information represented within this brochure may not be accurate at the time of your purchase. If certain information is significant to your purchasing decision, please confirm the information with your dealer prior to submitting your order.



Also, as a new Monaco owner, you're entitled to our comprehensive **OWNER ADVANTAGE PROGRAM**. With this impressive roadside assistance package, Master Certified RVDA Technicians and ASE Certified Technicians are on call 24 hours a day to handle any problems you may experience with your coach. And that's not all. Members of our Owner Advantage Program also receive the following benefits: emergency roadside service, fuel delivery, tire change, battery jump start, lockout service, trip routing and maps, and much more.

You can access **MONACOCOACH.COM** night or day to take advantage of its many features. The site includes factory tours, a dealer locator function and plenty of information on Monaco products and scheduled club events. Plus, through the site, you may contact us directly at any time.



## THE FAMILY ADVANTAGE.



When you purchase a coach from Monaco, you become part of an industry-leading family of companies called Monaco Coach Corporation. What does that mean for you? It means you have access to a wider array of benefits. To begin with, your coach is built by a level of expertise that could only be achieved through the teamwork and combined experience of all our companies. Like, for example, such exclusive innovations as the Roadmaster chassis — designed specifically for each individual model of our gas coaches.

You also get the benefit of our White Glove factory inspection program, for a higher level of quality assurance and added peace of mind. And your dealer will be happy to tell you about our other innovative programs, including our Extended Care service agreements. Of course, once you're on the road, you'll have access to our nationwide network of more than 350 service facilities, meaning wherever you travel, you're never far from a friend. Ready to roll? In a 2004 Monaco, the strength of our entire family is behind you every mile of the way.



**350**  
and growing | Service  
Facilities  
Nationwide



## WARRANTIES

**12 MONTH/24,000 MILE** basic limited warranty

**5 YEAR/50,000 MILE** limited warranty on aluminum or steel frame structure of sidewall, roof, front and rear cap


See owner's manual for complete details.

As a Monaco owner, you're entitled to a free subscription to our **LIFESTYLES** magazine, giving you all the latest news on our products, club events and exciting destinations.



## THE SHINE OF SUCCESS.

---



It's like a milestone you breeze past without noticing. A turning point where everything changes. Where suddenly, the things you've achieved outnumber the things you've dreamed of. In short, you've arrived. And now that you're here, you can fully appreciate the quality experience of a Monaco coach. As a perfectionist, it's a level of performance and luxury that you recognize instantly. And as a freedom-lover, it's your gateway to endless possibilities. This is the starting point for a whole new journey. Because once you catch a glimpse of yourself in the mirror of a new Monaco, you'll see once and for all just how far you've come.



91320 Industrial Way, Coburg, OR 97408 800 634-0855 606 Nelson's Pkwy., Wakarusa, IN 46573 800 650-7337

*Monaco Coach Corporation is traded on the NYSE under the listing MNC. 0903 NPN:BROMMON*