



When it comes to a Class C motor home,
Minnie Winnie is first class.





Let's talk room.
 Welcome to Minnie Winnie's generous interior, a pleasant and relaxing haven that can grow even larger and more comfortable thanks to the standard hydraulically powered front slideroom.

These are living spaces you can truly live in, with upscale features like beautiful Stitchcraft custom furniture, premium day/night pleated shades that offer various levels of privacy and interior lighting controlled by wall-mounted switches.

Overhead, ceiling-ducted air conditioning delivers efficient climate control for the entire coach and an attractive one-piece textured fabric ceiling completes the look.

27P-Garden Gate-Salem Cherry

Minnie Winnie. Created for those seeking the convenience of a Class C motor home with the comfort of a Class A.

Talk about the best of both worlds, the Minnie Winnie offers the kind of space, comfort and amenities you only find in a Class A motor home. Yet it delivers the drivability, convenience and value you expect from a Class C model.

With its impressive list of standard features, Minnie Winnie is a dream on wheels.

But it's a dream you can design to fit your own very special wants and needs. Because Minnie Winnie is available in a variety of floorplans, you can choose a front overhead bunk or deluxe entertainment system, single or double slideout models, a split bath, a roomy L-shaped galley. . . .

You get the idea. You know what you want. Comfort. Quality. Value. Fun choices. And with Minnie Winnie, you get it all.



27P-Garden Gate-Salem Cherry

A wonderful place to retire.

Minnie Winnie's 27P bedroom slideout area has a large wardrobe with spacious drawers and closet space, plus a desk/vanity with even more storage. The storage story continues overhead, with gorgeous doors and drawers which feature a catalyzed finish typically found in the cabinetry of finer homes. The queen-size bed has a Serta® mattress and lifts up easily to access another storage area below.



That's entertainment.

You'll experience extraordinary music, movies and TV with the available QSurround™ 5.1 sound amplifier system. Choose a 25" or 27" stereo TV and stereo VCR. The overhead cab area features storage cabinets and an available 130-watt inverter, which provides 110-volt AC power to the TV and VCR when shoreline or generator power isn't in use.



Cook up a storm.

Prepare great meals or snacks with ease in Minnie Winnie's full-featured galley. Note that it comes complete with three-burner Magic Chef® range/oven, a new built-in microwave over the range, and a molded recessed composite sink that's stain resistant and easy to clean. The sink covers and a flip-up countertop extension provide additional work space. Doors and drawers open easily with large handles, while positive catches help keep them secure.



Driver friendly.

The well-designed cockpit has controls designed and positioned for maximum driver comfort and convenience and can be enhanced with the available woodgrain dash applique. All gauges, switches and controls are full-sized and easy to reach—including standard power windows and door locks. In the center console there's a handy storage tray, a coin holder, oversized cupholders and a large tip-out storage compartment. Driver and passenger-side airbags are standard.



Built for comfort.

The high-back Stitchcraft driver and passenger cab seats are multi-position and feature fixed lumbar support for added comfort. Select the available leather shown here for an upscale look and feel.



A clear rearview.

For added safety when backing up, select the available rearview monitor system. It includes a 6" screen mounted between the visors on an adjustable swivel base. The system also includes one-way audio.



This radio's a "wow."

Our engineers worked closely with the radio manufacturer to create the RV Radio designed specifically for RV use. It includes an AM/FM stereo cassette/CD player with a built-in weather band for immediate weather updates at the touch of a button. Its large control knobs and buttons are easy to operate.

Fill 'er up.

Stock up for a long trip. It's easy with Minnie Winnie's pull-out pantry found in the 27P and 30V floorplans. The large double-door refrigerator/freezer provides abundant cold storage.



The key to it all.

Minnie Winnie makes use of the KeyOne™ system. Just one key opens most vehicle doors, including compartment doors. What could be simpler?



More power to you.

And more efficiency, too, thanks to this standard, high-quality Onan® MicroQuiet™ generator. It supplies 4,000 watts of power to Minnie Winnie's 110-volt wiring system.



Check this out.

Quickly check vital functions like tank levels, LP gas and battery power at a glance with Minnie Winnie's flush-mounted monitor panel, conveniently located in the galley.



A bigger picture.

Minnie Winnie's exterior mirrors feature a large field of vision—so important when parking or changing lanes. The electric remote feature makes adjustments easy and includes a defrost function, too.



Get a handle.

Enter and exit Minnie Winnie with ease using the thoughtfully placed, extra-large, sturdy handles.



Entertainment plus.

Minnie Winnie can be equipped with the available exterior entertainment center that includes AM/FM stereo with antenna, a cassette or CD player, 12-volt DC receptacle, TV jack, 110-volt outlet, speakers and a removable table.

Dish ready.

Expand your viewing options with an available TV satellite dish with a digital elevation sensor. Minnie Winnie comes prewired for a dish, so you can choose to have it installed now or later.



Say goodbye to drips.

Minnie Winnie's innovative awning rail, which has a built-in rain gutter, channels the water away from the entrance door and windows to the front and rear of the coach. This helps keep you dry and your coach clean and streak free.



StoreMore. A lot more.

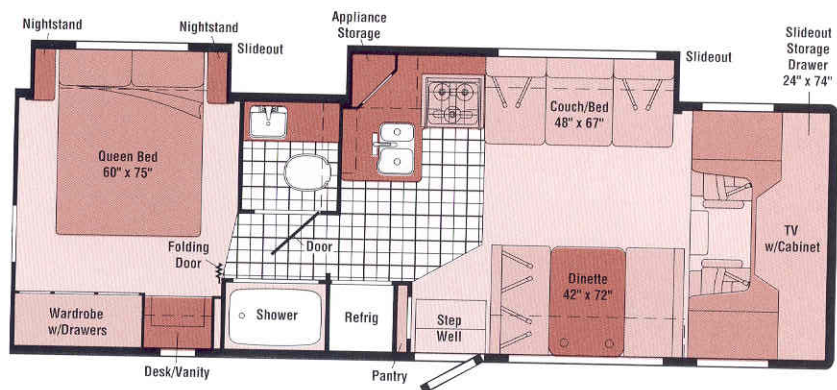
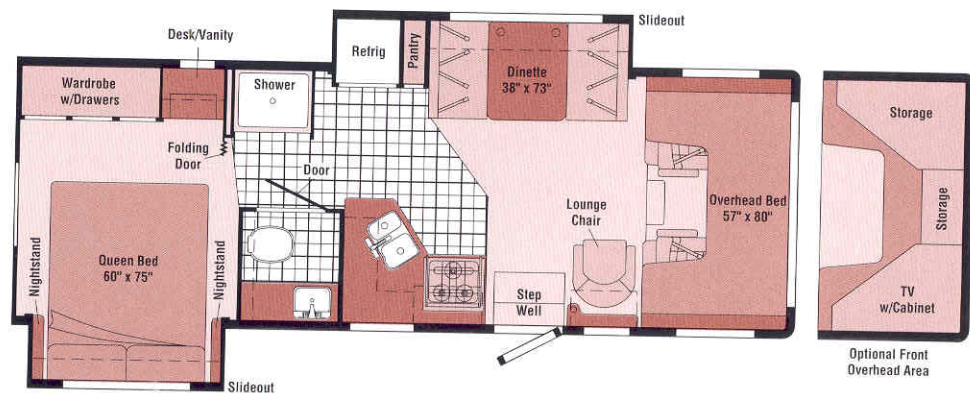
Extend your storage space and your living space with Winnebago Industries' exclusive StoreMore® slide-out system. The 27P and 31C feature front exterior storage compartments which extend along with the slideout to make loading and unloading easier anytime. There's plenty of room here for oversized or odd-shaped items.



The outside story.

Minnie Winnie's one-piece fiberglass sidewall is amazingly tough — typical for Winnebago Industries' design. Fiberglass running boards are a standard Minnie Winnie feature and help keep the sidewalls clean and free of rock chips. Also available: Ride-Rite® rear auxiliary air springs to improve the quality of your ride and stainless steel wheel liners, to resist corrosion over the long haul.

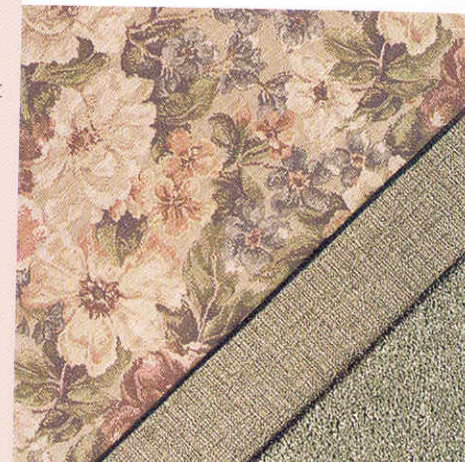
FLOORPLANS



INTERIORS

27P

- Dinette/refrigerator **STORE MORE** Slideout System
- Rear bedroom slideout with large wardrobe and desk/vanity area
- New movable hoop-base swivel/glider lounge chair
- Also available: TV and storage area in front overhead

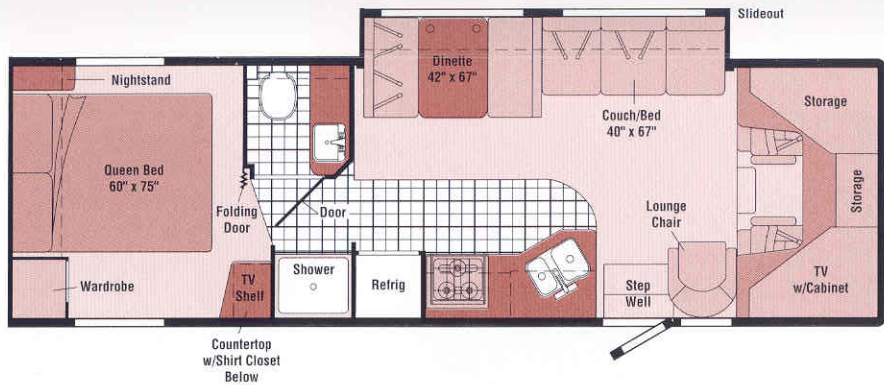


Garden Gate

30V

- Couch/galley slideout
- Rear bedroom slideout with large wardrobe and desk/vanity area
- Large L-shaped galley
- Front overhead cabinet with TV and storage





Note: Dimensions shown are for sleeping space only and dashed lines denote overhead storage areas.

31C

- Couch/dinette **STOREMORE** Slideout System
- Front overhead cabinet with TV and storage
- Split bath with private shower



Summer Straw

EXTERIORS



Medium Titanium Metallic



Portsmouth Oak Woodgrain

Wintergreen Metallic



Salem Cherry Woodgrain

SPECIFICATIONS

	27P	30V	31C
Length	27'11"	30'2"	31'4"
Exterior Height w/AC*	11'7"	11'8"	11'8"
Exterior Width ^Δ	8'5.5"	8'5.5"	8'5.5"
Exterior Storage (cu. ft.)	40	78	70
Interior Height	6'7"	6'7"	6'7"
Interior Width	8'	8'	8'
Fresh Water Capacity w/Heater* (gal.)	36	41	41
Holding Tank Capacity - Black/Gray (gal.)	42/35	35/38	35/38
LP Capacity [◇] (gal.)	18	18	18
Fuel Capacity (gal.)	55	55	55
GCWR (lbs.)	20,000	20,000	20,000
GVWR (lbs.)	14,050	14,050	14,050
GAWR - Front (lbs.)	4,600	4,600	4,600
GAWR - Rear (lbs.)	9,450	9,450	9,450
Wheelbase	190"	205"	219"

Coffemaker	O	O	O
Pantry	S	S	
Partition glass, end of galley		S	
Water Purification w/separate faucet	O	O	O

BATH

Cabinet lavatory, Cabinet medicine, Faucet (lavatory) dual-control, Faucet (shower) dual-control w/flexible shower head, Light shower, Magazine Rack , Mirror w/frame, Shower w/removable clothes rod, Shower Door textured glass, Shower Skylight , Sink rectangular, Tissue Holder , Toilet w/foot-pedal flush, Towel Bar , Towel Rack 3-rod, mounted to door	S	S	S
Towel Ring	S	S	

BEDROOM

Bed queen, Serta,* innerspring, w/underbed storage, bedspread, pillow shams, throw pillow, Lights decorative wall lamp(s), Lights reading, Wall Border , Wardrobe Cabinet light, Nightstand(s)	S	S	S
Headboard			S
Shirt Closet w /2 drawers			S
Desk/Vanity Cabinet w/flip-up countertop, wardrobe, drawers and folding chair	S	S	

EXTERIOR

Awning Rails w/rain gutters, Door entrance w/separate screen door, deadbolt lock, Entrance Door Steps double, electric w/door jamb switch, Graphics Package Medium Titanium Metallic or Wintergreen Metallic, Ladder , Lights porch light w/interior switch, Mirrors plate mount, electric remote w/defrost, Mudflaps rear, Receptacle AC duplex, Running Boards fiberglass, Sidewall Skin 1-piece smooth fiberglass, Storage Compartments smooth valance panels, trunk liner,* gas cylinders, TriMark KeyOne™ System, paddle latch, lights	S	S	S
Awning* patio	O	O	O

SYSTEMS

Air Conditioner (Roof) 14,800 BTU, ceiling ducted w/wall thermostat, Auxiliary Start Circuit , Batteries (Coach) (2) deep cycle, Battery (Coach) disconnect system, Battery Charge Control automatic dual, Drain water tank, Electrical Distribution System AC & DC breaker panels, 45-amp converter/charger, Furnace 30,000 BTU, low profile, Generator Prep Kit , Monitor Panel battery condition gauge, generator hourmeter gauge,* generator start/stop switch,* holding tank levels, LP tank level, water heater light(s), water heater switch, water pump switch, water tank level, Power Cord 30-amp, 25', Roof Vent* nonpowered, lounge, bedroom, Roof Vent powered, bath, Service Center (Drainage/Water) city water hookup/tank diverter fill, drainage valves, exterior wash station w/pump switch,* 10' sewer hose, Service Center (Electrical) cable input, power cord, telephone input, Tank holding, heated compartment, Tank LP, permanent mount w/gauge, Water Heater electronic ignition, LP gas, Water Heater Winterization Bypass Valve manual, Water Hookup city, Water Pump demand, Water System Winterizing Valve manual, Water Tank Fill gravity, w/locking door	S	S	S
Generator* 4,000 watt, Onan® MicroQuiet,™ gas	O	O	O
Home Comfort Plus Package* roof AC heat pump, auxiliary automotive heater, nonpowered insulated roof vent (bedroom), powered insulated ventilator fans (lounge and bath)	O	O	O
Inverter* DC/AC, 130 watt	O	O	O
Roof Vent powered ventilator fan,* lounge	O	O	O
Solar Panel* 10 watt w/battery charger	O	O	O
Water Heater electronic ignition, 120 vac/LP gas w/Motoraid (Motoraid 27P, 31C only), includes energy management system	O	O	O

SLIDEOUT

Slideout Room hydraulic powered, dinette/pantry/refrigerator, w/slideroom cover, STOREMORE , Slideout Room hydraulic powered, bed w/slideroom cover	S		
Slideout Room hydraulic powered, couch/galley w/slideroom cover, Slideout Room hydraulic powered, bed w/slideroom cover		S	
Slideout Room hydraulic powered, couch/dinette w/slideroom cover, STOREMORE			S

SAFETY

Airbags driver & passenger, Assist Bar interior, Assist Handle exterior, metal, Bumpers front & rear, Detectors/Alarms LP leak, smoke, carbon monoxide, Fire Extinguisher 10 B.C., Ground Fault Interrupter , Light center high-mount stop lamp, Light(s) courtesy w/wall switch(es), Seat Belts cab, 3-point, Seat Belts lap (in selected areas), Window escape	S	S	S
------------------------------------------------------------------------------------------------------------------------------------------------------------------------------------------------------------------------------------------------------------------------------------------------------------------------------------------------------------------------------------------------------------------------------------------------------	---	---	---

WARRANTY

12-month/15,000-mile basic limited warranty , 36-month/36,000-mile warranty on structure,** 10-year limited parts & labor warranty on roof	S	S	S
---------------------------------------------------------------------------------------------------------------------------------------------------------------------	---	---	---


AUTOMOTIVE/CHASSIS

Chassis - Ford® E450 6.8L Super-Duty V-10 SOHC Triton™ engine 305 hp, automatic 4-speed overdrive transmission, 4-wheel anti-lock brakes, 130-amp alternator, dual airbags	S	S	S
Tire spare, Tire Tool wrench, Trailer Hitch 3500-lb. drawbar/350-lb. maximum vertical tongue weight & wiring, □ Wheel Covers	S	S	S
Wheel Liners stainless steel	O	O	O
Air Springs auxiliary Ride-Rite® rear	O	O	O

CAB AREA & DRIVER CONVENIENCES

Beverage Holder, Cab Seats (fabric) w/3-point adjustable seat belts, armrest, lumbar support, multi-adjustable slide/recline, Cigarette Lighter/12-Volt Electrical Supply, Cruise Control, Curtain cab divider, Domelights, Floor Mats rubber driver & passenger, Hood Release, Power Door Locks, Steering Wheel tilt w/power assist, Sunvisors (2), Trim Panels driver & passenger doors (chassis supplied) w/map pocket	S	S	S
Cab Seats leather seating surface	O	O	O
Instrument Panel woodgrain appliqué	O	O	O
Monitor System rearview w/single camera & 1-way audio, Audiovox®	O	O	O

ENTERTAINMENT

 (Cab) AM/FM stereo cassette/CD player, roof-mounted flexible rubber antenna, speakers (4), Satellite System Ready, Telephone input & interior jack, TV Enhancement Package antenna (amplified), 12-volt powerpoint(s), interior jack(s), coax wiring, cable input	S	S	S
Entertainment Center (Exterior) w/Cassette or CD Player DC receptacle, AC duplex receptacle, AM/FM radio, TV jack, radio antenna, speakers (2), lockable compartment and removable table	O	O	O
Satellite Dish Antenna Winegard,* RV digital, elevation sensing unit	O	O	O
Sound System* deluxe, w/QSurround,™ TV 27" (25" 30V) stereo color AC, stereo VCR, amplifier, cube speakers (5), sub-woofer, video selection system	O	O	O
TV 13" Color 12 Volt & VCP* w/remotes	O		
TV 25" Color AC* w/remote, video selection system	O	S	S
VCR w/remote*	O	O	O

INTERIOR

Clock, Light swivel (front bunk), Lights ceiling, incandescent w/wall switches, Lights reading, Powerpoint 12-volt (dining room), Cupholders, Shades day/night pleated (lounge, dinette, bedroom), mini blind (galley)	S	S	S
Bunk front overhead w/mattress, sliding side windows, pleated privacy curtain, side storage cabinets	S		
Bunk Ladder*	O		
Bunk Window Delete (front windows only)	O		
Mirror wall			S
Picture			S
Windows dual-pane/thermo-insulated	O	O	O

CABINETY

Woodgrain Portsmouth Oak stile-and-rail construction w/raised panel inserts on upper doors	S	S	S
Woodgrain Salem Cherry stile-and-rail construction w/raised panel inserts on upper doors	O	O	O

COUNTERTOPS

Laminate w/wood-look edge	S	S	S
----------------------------------	---	---	---

FLOORCOVERING

Carpeting w/pad	S	S	S
Vinyl bath & galley	S	S	S

FURNITURE

Chair lounge (swivel/slide)			S
Chair lounge, hoop base (swivel/glider) w/magazine rack (must be secure when traveling)	S		
Couch w/throw pillow		S	S
Dinette access to storage below	S	S	S

GALLEY

Countertop flip-up extension, Faucet single-control, Microwave Oven w/range fan, Range* 3-burner w/oven, Magic Chef®, Refrigerator/Freezer large double-door, Norcold®, Sink double-bowl molded w/sink covers, Wall Border	S	S	S
Appliance Storage Cabinet w/roll-up tambour door			S

Not all motor homes are created equal.

As you take a closer look, you'll see that there is much more to the Winnebago Minnie Winnie than a long list of standard features and compelling floorplans. Beneath it all you'll find a SuperStructure™ foundation of strength and durability, and Winnebago Industries' recognized service and warranty support.

We are committed to service.

We back our motor homes with the best after-the-sale service in the industry.

- 12-month/15,000-mile basic limited warranty
- 36-month/36,000-mile warranty on structure
- Standard 10-year limited parts-and-labor roof warranty
- Complimentary 24-hour Roadside Assistance Program
- TripSaver emergency warranty parts shipments
- National Dealer service network



Certified quality.

Recreation Vehicle Dealer Association members annually rate RV manufacturers on the quality of their products, and on their sales and service support. Winnebago Industries has achieved the coveted Quality Circle award every year since its inception, the only major motor home manufacturer to do so.



Learn more about what sets Winnebago Industries apart.

Ask your dealer for this guide. It will help you learn what makes Winnebago Industries motor homes distinctly superior to other brands.



Warning: Joining WIT has been known to cause excessive fun.

Winnebago-Itasca Travelers (WIT) is a club for owners of Winnebago Industries motor homes. WIT is a great way to meet people and offers you:

- Caravans and rallies
- Local and state group activities
- Benefits for RVers



SuperStructure

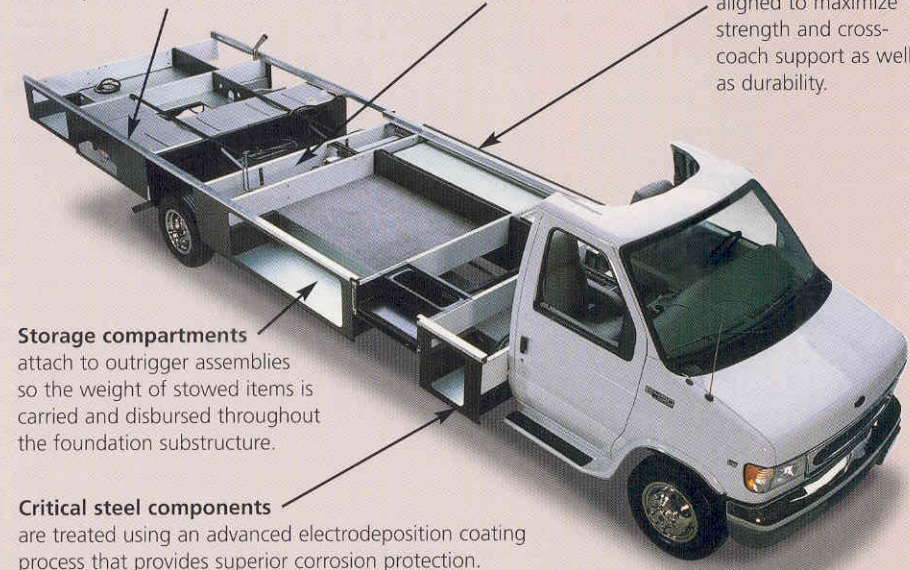
is the term given to Winnebago Industries' structural motor home design and construction. Rather than a single component, it is the culmination of design integration that incorporates steel and aluminum substructures, composite design laminated floor risers, interlocking joint technology, and Thermo-Panel® floor, roof and sidewalls to form a high-strength, durable vehicle body.

Interlocking joint construction utilizes advanced extruded aluminum structural components to create integrated floor-to-sidewall, and sidewall-to-roof joints. This design effectively distributes the weight of the walls and roof, making a stronger and more durable body than competitor designs that rely on screws to carry the weight.

Laminated risers feature a welded aluminum core for superior strength and provide a stable base for the floor structure and storage compartments.

SUPER STRUCTURE

The foundation substructure assembly is precision-aligned to maximize strength and cross-coach support as well as durability.



Storage compartments attach to outrigger assemblies so the weight of stowed items is carried and disbursed throughout the foundation substructure.

Critical steel components are treated using an advanced electrodeposition coating process that provides superior corrosion protection.

Built to a higher standard.

Minnie Winnie features a crowned, one-piece fiberglass roof backed with a 10-year limited parts-and-labor warranty. Fiberglass offers superior strength, attractiveness and durability over rubber roofs found on many competitive models. Over time, rubber roofs are susceptible to chalking, streaking and degradation, and have less puncture and tear resistance than fiberglass.



One-year-old competitor's rubber roof



One-year-old Winnebago Industries fiberglass roof

WINNEBAGO Built proudly by
WINNEBAGO INDUSTRIES

©2001 Winnebago Industries, Inc., Forest City, IA 50436. Printed in USA.

Seat belts are your most important hookup. Always buckle up.
Visit us at www.winnebagoind.com