



GEORGETOWN **GT3**

BY FOREST RIVER

3 SERIES DIMENSIONS & CAPACITIES

GVWR (Gross Vehicle Weight Rating) is the maximum permissible weight of the unit when fully loaded. It includes all weights, inclusive of all fluids, occupants, cargo, optional equipment and accessories. For safety and product performance do NOT exceed the GVWR.

GCWR (Gross Combined Weight Rating) is the maximum permissible loaded weight of your motor home and any towed trailer or towed vehicle. Actual GCWR of this vehicle may be limited by the sum of the GVWR and the installed hitch receiver maximum capacity rating; see hitch rating label for detail.

GAWR (Gross Axle Weight Rating) is the maximum permissible weight, including cargo, fluids, optional equipment and accessories that can be safely supported by each axle.

UVW (Unloaded Vehicle Weight)* is the typical weight of the unit as manufactured at the factory. It includes all weight at the unit's axle(s), including full fuel, all fluids and LP Gas. The UVW does not include cargo, fresh potable water, additional optional equipment or dealer installed accessories.

*Estimated Average based on standard build optional equipment.

CCC (Cargo Carrying Capacity)** is the amount of weight available for fresh potable water, cargo, passengers, additional optional equipment and accessories. CCC is equal to GVWR minus UVW. Available CCC should accommodate fresh potable water (8.3 lbs per gallon). Before filling the fresh water tank, empty the black and gray tanks to provide for more cargo capacity.

** Estimated average based on standard build optional equipment

Each Forest River RV is weighed at the manufacturing facility prior to shipping. A label identifying the unloaded vehicle weight of the actual unit and the cargo carrying capacity is applied to every Forest River RV prior to leaving our facilities.

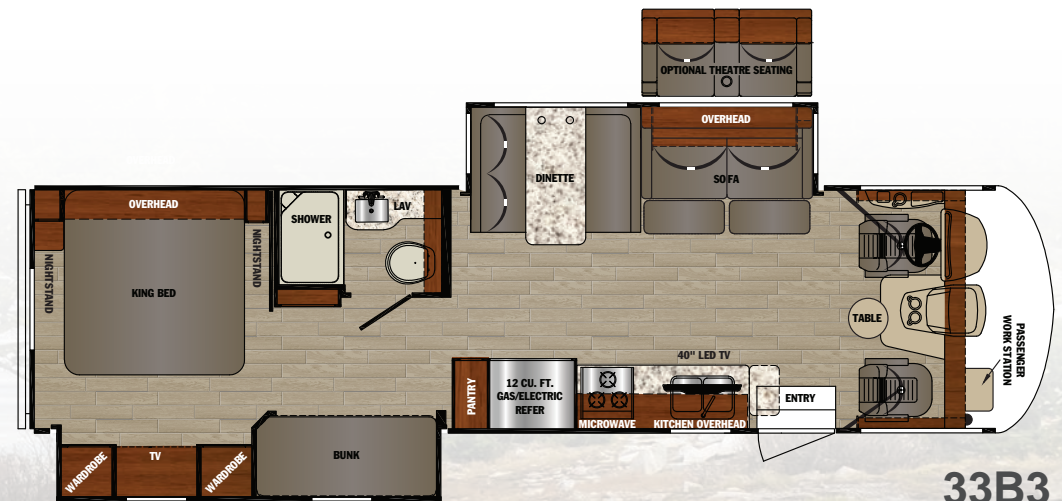
The load capacity of your unit is designated by weight, not by volume, so you cannot necessarily use all available space when loading your unit.

Actual towing capacity is dependent upon your particular loading and towing circumstances, which includes the GVWR, GAWR and GCWR as well as adequate trailer brakes. Please refer to the Operator's Manual of your vehicle for further towing information.

	30X3	33B3
Chassis	Ford F53	Ford F53
Engine	V-10	V-10
Horsepower	320 HP	320 HP
Torque (ft-lbs)	460	460
Wheelbase	190"	228"
Fuel Capacity (gal)	80	80
GVWR (lbs)	18,000	20,500
GCWR (lbs)	23,000	26,000
GAWR Front (lbs)	7,000	7,500
GAWR Rear (lbs)	12,000	13,500
Exterior Storage (cu ft)	133	156
LP Tank (gal)	24.5	24.5
Fresh Water (gal)	50	50
Water Heater (gal)	6	6
Grey Tank (gal)	42	42
Black Tank (gal)	42	42
Length	31' 11"	34' 6"
Exterior Width	99.5"	99.5"
Exterior Height	12' 3"	12' 3"
Interior Width	95.5"	95.5"
Interior Height	82"	82"
Awning Length	20'	12'
Furnace (BTU)	35K	35K



30X3



33B3

3 SERIES STANDARDS & OPTIONS

STANDARDS

One Piece Fiberglass Roof
 Custom Countertops Throughout
 Undermount Stainless Steel Kitchen Sink
 Fiberglass Front Cap w/ Back-lit Logo, LED Accent Lights and Automotive Bonded Front Windshield
 Power Patio Awning w/ LED Light **Chrome Package:**
 Chrome Headlight Bezels
 Chrome Foglight Bezels
 Chrome Mirrors
 Slideout Room Awning(s)
 Stainless Steel Bathroom Sink
 Dream Dinette
 "SUPER STORAGE" Rear Cargo Compartment
 30" Wide Entrance Door
 Outside Shower
 Flush Floor Construction Throughout
 Rotocast Storage Compartments w/ Drains
 Rear Roof Ladder
 Remote/Heated Exterior Mirrors
 Outside Entertainment Center w/ 32" LED TV
 Pioneer Dash Entertainment System w/ AM/FM/DVD/Bluetooth/USB
 Rubber Tread Entry Steps
 Custom Cockpit Dash w/ ABS Side Consoles, Drink Holders, 110V Outlet/USB
 Low Profile Engine Cover w/ Drink Holders
 Adjustable 3 Point Seat Belts
 Deluxe Driver Passenger Seating
 Hide-A-Bed Sofa w/ Footrests

Night Shades Throughout
 40" LED Main TV
 Full Extension Ball Bearing Drawer Guides
 Heated and Enclosed Holding Tanks w/ Arctic Package
 Pocket Door To Bedroom
 32" LED Bedroom TV w/ Flip Up
 Bedside Nightstands w/ 12V and USB
 5000 lbs. Tow Hitch w/ 7-Way Plug
 Dual Coach Batteries
 Hydraulic 4-Point Leveling Jacks
 Color Side and Rear Camera Package
 Black Water Tank Flush
 Driver/Passenger LED Map Lights
 LED Bunk Accent Lights
 (2) High Output Quiet Air Command™ Ducted Roof A/Cs w/ Chill Construction and (1) Heat Pump
 KING Jack™ Digital TV Antenna w/ Mount & Built-in Signal Meter
 Solar Prep
 6 Gallon Gas/Electric Water Heater
 5.5 KW Onan Generator
 50 AMP Service
 Auto Transfer Switch
 Vacuum Bonded Gel Coated Sidewalls w/ Graphics
 Steel Front Cockpit Cage
 Triple Electric Entrance Step
 Rubberized Entry Assist Handle (exterior)
 Stainless Steel Entry Assist Handle (interior)
 Power Front Sun Shade
 Manual Cockpit Side Sun Shades
 Passenger Side Workstation
 Diamond Plate Rubber Floor Covering (driver area)

Shaw Residential Vinyl Flooring
 3-Burner Cooktop w/ Oven and Flush Mount Glass Stove Cover
 Flip-up Countertop Extension
 Emergency Start Switch
 Quick Connect Exterior LP Fitting

POPULAR OPTIONS

Manual Front Overhead Bunk
 P2K Power Front Overhead Bunk
 MaxxAir Power Fan
 Manual Theatre Seating

CABINERY

Landis Ash
 Raised Panel Solid Wood Cabinet Doors

INTERIOR DÉCOR OPTIONS

Café
 Sand Castle
 Granite

EXTERIOR OPTIONS

Champagne Colored Exterior Gel Coat

GEORGETOWN BY FOREST RIVER GT3

For more information visit
www.forestriverinc.com/gt3

Forest River, Inc.
 Georgetown Division
 902 County Road 1
 Elkhart, IN 46515
 (574) 367.3285



CUSTOMER SATISFACTION



www.ForestRiverBuyLocal.com

FREE MEMBERSHIP
 to Forest River Owners' Group

www.forestriverfrog.com



For more information on Coach-Net, scan here.



YOUR GT3 DEALER



Learn More
 Scan this barcode using a QR Reader on your smart phone to learn more about Forest River.



A Berkshire Hathaway company.

All information contained in this brochure is believed to be accurate at the time of publication. However, during the model year, it may be necessary to make revisions and Forest River, Inc., reserves the right to make all such changes without notice, including prices, colors, materials, equipment and specifications as well as the addition of new models and the discontinuance of models shown in this brochure. Therefore, please consult with your Forest River, Inc., dealer and confirm the existence of any materials, design or specifications that are material to your purchase decision. 9/18

©2018 GT3

a Division of Forest River, Inc., a Berkshire Hathaway company. All Rights Reserved.