

2000



IT'S A BIG WORLD... *have you seen it?*



FINALLY, AN RV THAT FITS THE BILL...



You don't want to spend a lot but, naturally, you want the most for your money. Sound familiar? Welcome to Mallard. The price, you'll discover, is great but, more importantly, is what you get for your money.

First and foremost, you'll be getting a Fleetwood RV, the world's number-one towable trailer—an RV so good it's backed with a two-year full warranty. It's one of the best in the business. And you'll also receive Fleetwood's one-year 24-hour roadside assistance, at no extra cost.

But, more specifically, you'll be getting

a trailer with a strong, durable foundation—with a chassis that is extensively tested to assure you the best in safety, handling and comfort. In fact, there's not an RV in the world that's tested more than a Fleetwood.

The Mallard is built solid to provide you and your family with many years of fun-filled, trouble-free service. Kiln-dried Douglas fir framing assures a consistent warp-resistant shape. And its exterior walls are 0.024 gauge sheetmetal—0.005 gauge thicker than the industry standard—for greater strength.

With Mallard, you can choose from 18 different floor plans—layouts that sleep up to ten. There are 13 travel trailers ranging in length from 19 to 37 feet and five fifth-wheel models, from 23 to 29 feet. And eight of those trailers include the expandability of Dura-Glide™, Fleetwood's motorized slide-out rooms, the most durable and reliable slide-outs available. And this year,

they come with flush floor slide-outs.

You'll also appreciate Mallard's strong, weather-tight rubber roof and its in-floor heat and in-ceiling air ducts. They'll keep the temperature just right for you regardless of the weather. The beds feature comfortable innerspring mattresses, not foam. And the furniture is from Flexsteel®, a high-quality manufacturer.

In the galley, you'll find a double-bowl stainless-steel sink and cabinets that are deep enough for full-size dishes. There's a high-output 3-burner range with a Magic Chef® oven, a spacious double-door refrigerator and, in most models, a microwave. The bathroom includes a toilet, shower and large sink and throughout Mallard, there's plenty of cabinet and wardrobe space.

Our surveys have shown that nine out of 10 Fleetwood owners would recommend a Fleetwood to their friends. Wouldn't you?



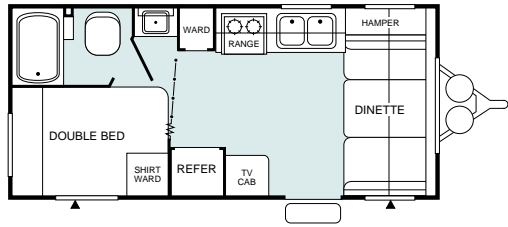
WETLANDS WILDLIFE – THE MALLARD

As you may know, one of the most common residents of our wetlands is the Mallard. In fact, there are more Mallards in the world than any other duck—in the Americas, Europe and northern Asia. But did you know that the Mallard is also the ancestor of the white domestic duck? And only the female quacks. The male has a soft, raspy voice.

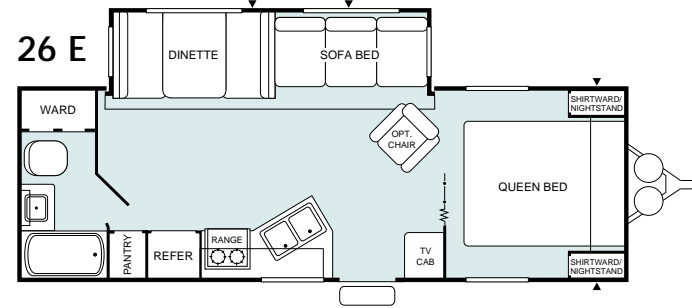
2000

MALLARD FLOOR PLANS

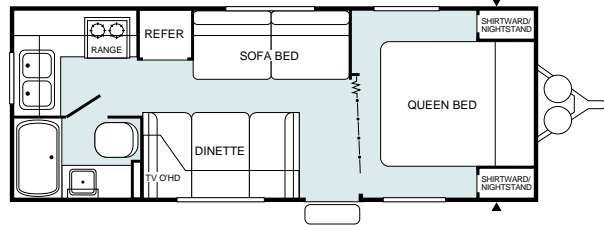
19 N



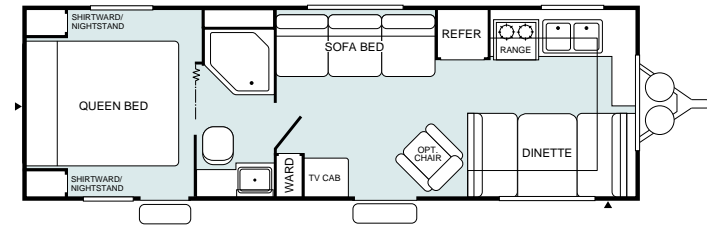
26 E



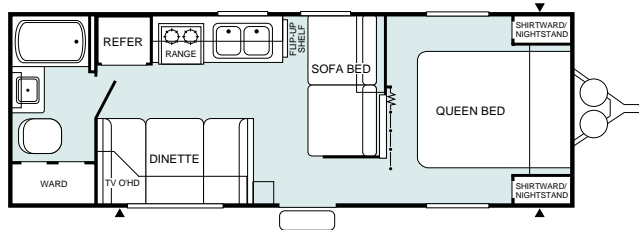
23 D



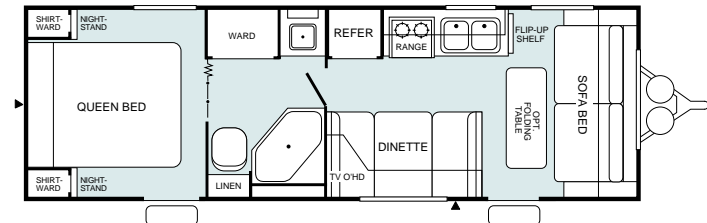
26 M



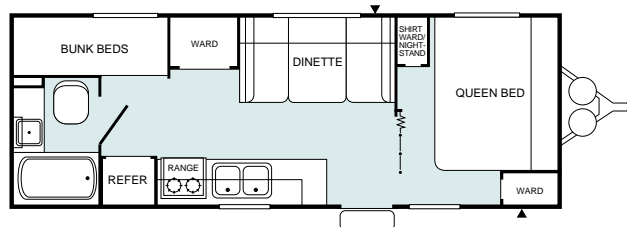
24 J



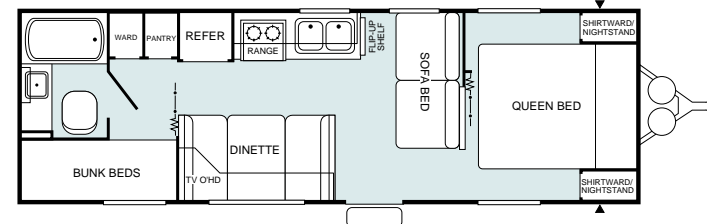
27 G



25 A



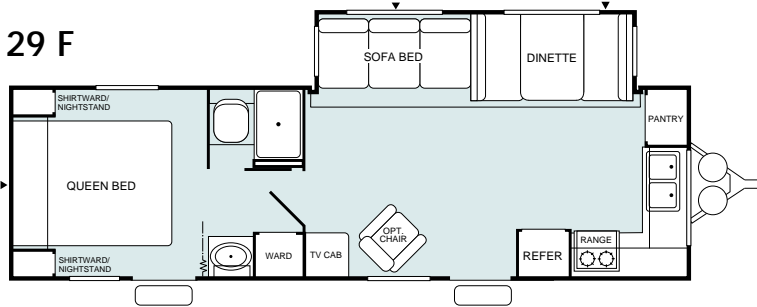
27 X



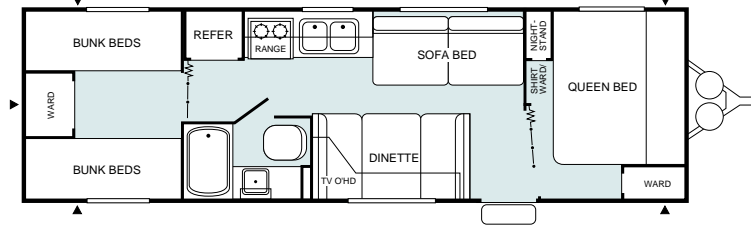
▲ = Exterior Storage

MALLARD FLOOR PLANS

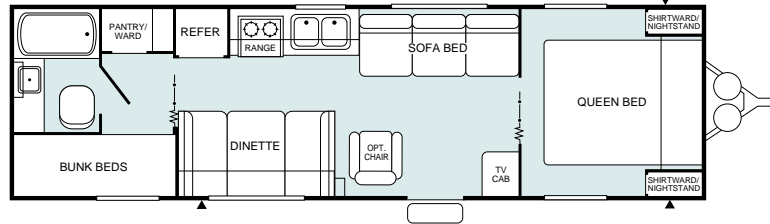
29 F



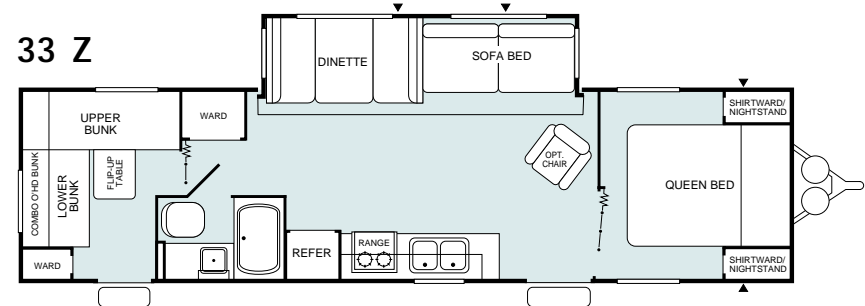
29 Y



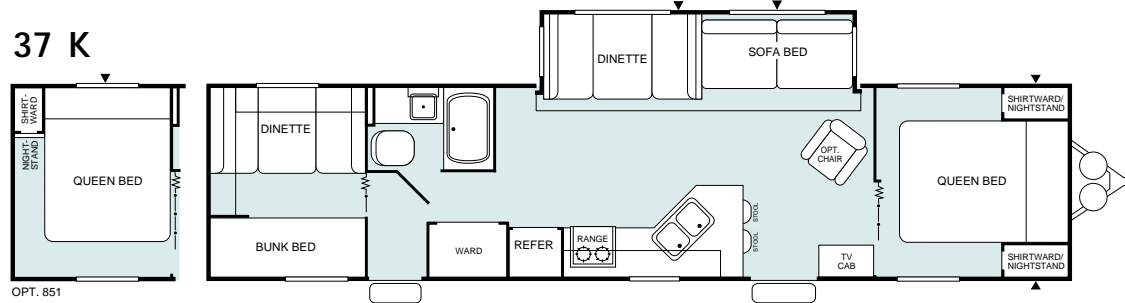
29 S



33 Z



37 K



▲ = Exterior Storage



WETLANDS WILDLIFE – THE BLUE HERON

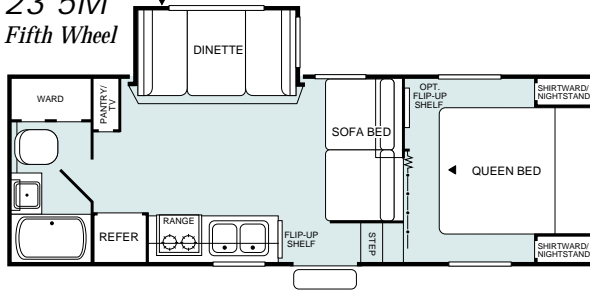
With its colorful blue-gray plumage, long neck, spindly legs and eagle-size wingspan, the 4-foot tall Great Blue Heron is an exotic bird. Yet, in the summer, the Heron can be found from Alaska to Mexico and everywhere in between. It nests high in the trees on a platform of sticks. And, unlike its cousin, the crane, it flies with its neck folded, not extended.



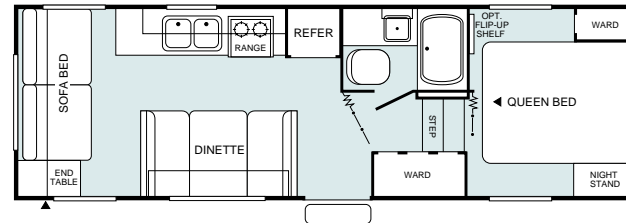
2000

MALLARD FLOOR PLANS

23 5M
Fifth Wheel

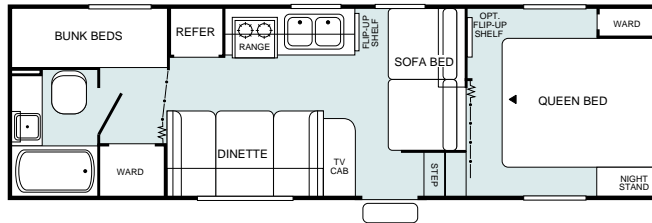


26 5H Fifth Wheel

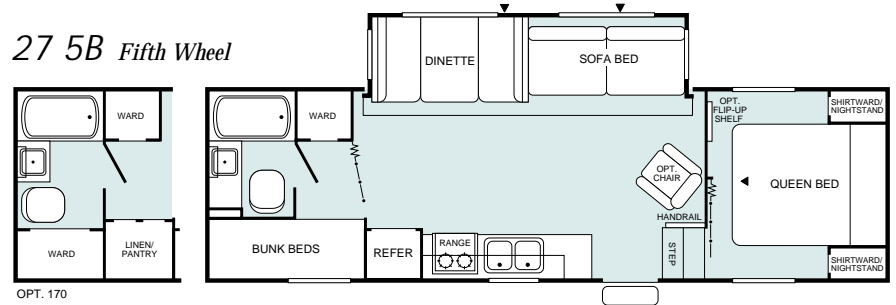


NEW!

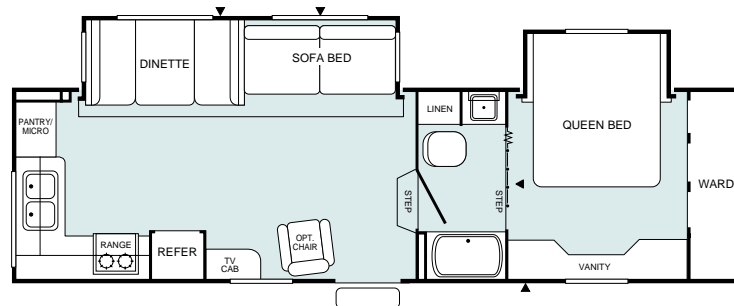
25 5G Fifth Wheel



27 5B Fifth Wheel



29 5S Fifth Wheel



▲ = Exterior Storage



WETLANDS WILDLIFE – WATER LILIES

Often found in ponds and marshes, the water lily floats on the surface. Its large green leaves are popular hangouts for frogs and small turtles. In the spring, the lily's colorful flowers bloom and float on the surface or stand above it in rigid stalks. In the fall, they go dormant and re-appear as the weather warms. The lotus is a member of the same family.

MALLARD STANDARD FEATURES

EXTERIOR

- Construction Steel Channel or I-Beam, Cambered Chassis
- Hose Carrier Bumper
- Fiberglass Insulation
- High-Gloss Exterior Finish
- Skylight Roof Vents
- Entry Assist Handle
- Flush Combo Entry Latch/Dead Bolt Lock
- Reinforced Screen Door w/Lock Shield & Kick Panel
- Radius Clamp Ring Windows
- Rubber Roof
- Dura-Glide™ Flush Floor Slide-Out (Slide-Out Models Only)
- A&E® Patio Awning (Most Models)
- TV Antenna w/Park Antenna Receptical (Most Models)
- 7-Gallon Dual LP Tanks w/Cover (Most Models)



OAK-RAISED PANEL CABINET DOORS
These enhance the look and provide durability.

INTERIOR

- TV/Entertainment Cabinet
- Overhead Cabinet Doors w/Decor Glass Inserts
- Innerspring Mattress
- Wainscot Molding
- Quality Furniture by Flexsteel®
- Dinette Overhead
- Miniblinds
- Color-Coordinated Bedspread w/Pillow Shams—Double & Queen



POT & PAN DRAWER

Plenty of space in this drawer for all your cookware.

BATH

- Thetford® Fresh Water Flush Toilet
- Overhead Medicine Cabinet w/Mirrored Door
- Wall-Mounted Towel Bar
- 12V Power Bath Roof Exhaust Vent

GALLEY

- Molded Sink Cover
- Miniblind
- Galley Overhead

APPLIANCES/EQUIPMENT

- Dometic® Double Door Refrigerator
- Magic Chef® 3-Burner, High-Output Range w/Oven
- Microwave Oven (Most Models)
- hydroflame® Forced Air, D.S.I. Furnace w/Thermostat
- In-Floor Rigid Heat Ducting
- Range Hood w/12V Light & Exhaust Fan
- Wall-Mounted Systems Monitor Panel
- 6-Gallon LP Water Heater
- Fire Extinguisher
- Smoke Detector
- LPG Leak Detector
- AM/FM Cassette Stereo w/Speakers (Most Models)
- Water Heater Bypass

ELECTRICAL

- Electronic Converter w/Built-in Battery Charger
- 120V Ground Fault Circuit Protection
- Wall-Mounted 120V Decor Light (Most Models)
- Prewired for Roof Air Conditioner
- Patio Light



PASS-THROUGH STORAGE

This storage area allows you to store extra long items and retrieve them from either side of the trailer.

MALLARD POPULAR OPTIONS

- Double Step Entry
- Stabilizing Jacks
- Tinted Safety Glass Windows
- Swivel Chairs
- Front Overhead Combo Bunk
- Folding Table
- Carpet w/Foam Pad in Living Room
- Carpet w/Foam Pad in Bedroom
- Range Cover
- Coleman® 13.5M BTU Air Conditioner
- Spare Radial Tire w/Carrier & Cover
- Exterior Shower
- 6-Gallon LP/120V Water Heater
- Water Purifier
- Fiberglass Exterior

*Not all models include all features.
 See your dealer for complete details.*



2000

MALLARD SPECIFICATIONS

MALLARD MODELS	19 N	23 D	24 J	25 A	26 E	26 M
GVWR (<i>Gross Vehicle Weight Rating</i>)	5,600	6,200	6,400	6,200	7,800	7,100
Gross Dry Weight ¹	3,700	4,190	4,350	4,160	5,690	4,850
Carrying Capacity ²	1,900	2,010	2,050	2,040	2,110	2,250
Hitch Dry Weight ¹	400	460	570	450	610	610
Dry Axle Weight ¹	3,300	3,730	3,780	3,710	5,080	4,240
Length ³	20' 5"	24' 11"	25' 10"	25' 5"	27' 8"	28' 4"
Width ⁶	8' 0"	8' 0"	8' 0"	8' 0"	8' 0"	8' 0"
Height ⁴	9' 0"	9' 0"	9' 0"	9' 0"	9' 6"	9' 0"
Tires – Size (<i>Radials</i>)	ST205/ 75R 15(B)	ST205/ 75R 15(B)	ST205/ 75R 15(B)	ST205/ 75R 15(B)	ST205 75R 15(C)	ST205/ 75R 15(C)
Fresh Water Tank ⁵ – gal.	40	40	40	40	40	40
Gray Water Holding Tank ⁵ – gal.	40	40	40	40	40	40
Black Water Holding Tank ⁵ – gal.	40	40	40	40	40	40
LPG Capacity – gal.	14	14	14	14	14	14
Bed Size – Standard	53"x 75" Double	60"x 75" Double	60"x 75" Double	60"x 75" Double 29"x 74" Bunk (2)	60"x 75" Double	60"x 75" Double
Sleeping Capacity	4	6	6	6	6	6

MALLARD MODELS	27 G	27 X	29 F	29 S	29 Y	33 Z
GVWR (<i>Gross Vehicle Weight Rating</i>)	6,800	7,200	8,600	7,500	7,400	9,300
Gross Dry Weight ¹	4,560	4,990	6,220	5,250	5,070	6,850
Carrying Capacity ²	2,240	2,210	2,380	2,250	2,330	2,450
Hitch Dry Weight ¹	530	580	890	590	640	870
Dry Axle Weight ¹	4,030	4,410	5,330	4,660	4,430	5,980
Length ³	27' 11"	28' 9"	30' 6"	31' 1"	29' 11"	38' 3"
Width ⁶	8' 0"	8' 0"	8' 0"	8' 0"	8' 0"	8' 0"
Height ⁴	9' 0"	9' 0"	9' 6"	9' 0"	9' 0"	9' 6"
Tires – Size (<i>Radials</i>)	ST205/ 75R 15(C)	ST205/ 75R 15(C)	ST225/ 75R 15(C)	ST205/ 75R 15(C)	ST205/ 75R 15(C)	ST225/ 75R 15(C)
Fresh Water Tank ⁵ – gal.	40	40	40	40	40	40
Gray Water Holding Tank ⁵ – gal.	40	40	40/21	40	40	40
Black Water Holding Tank ⁵ – gal.	40	40	40	40	40	40
LPG Capacity – gal.	14	14	14	14	14	14
Bed Size – Standard	60" x 75" Double	60" x 75" Double 29" x 74" Bunk (2)	60" x 75" Double	60" x 75" Double 29" x 74" Bunk (2)	60" x 75" Queen 29" x 74" Bunk (2)	60" x 75" Queen 29" x 74" Bunk (2)
Sleeping Capacity	6	8	6	8	10	9



MALLARD MODELS	37 K	23 5M	25 5G	26 5H	27 5B	29 5S
GVWR (Gross Vehicle Weight Rating)	10,100	7,700	7,500	7,000	8,500	9,800
Gross Dry Weight ¹	7,360	5,600	5,270	4,760	6,330	7,340
Carrying Capacity ²	2,740	2,100	2,230	2,240	2,170	2,460
Hitch Dry Weight ¹	970	930	1,100	900	1,310	1,650
Dry Axle Weight ¹	6,390	4,670	4,170	3,860	5,020	5,690
Length ³	37' 11"	25' 6"	27' 6"	26' 4"	28' 11"	30' 11"
Width ⁶	8' 0"	8' 0"	8' 0"	8' 0"	8' 0"	8' 0"
Height ⁴	9' 6"	11' 0"	10' 0"	10' 0"	11' 0"	11' 3"
Tires – Size (Radials)	ST225/ 75R 15(D)	ST205/ 75R 15(B)	ST205/ 75R 15(C)	ST205/ 75R 15(C)	ST225/ 75R 15(C)	ST225/ 75R 15(C)
Fresh Water Tank ⁵ – gal.	40	40	40	40	40	40
Gray Water Holding Tank ⁵ – gal.	40	40	40	40	40	40/21
Black Water Holding Tank ⁵ – gal.	40	40	40	40	40	40
LPG Capacity – gal.	14	14	14	14	14	14
Bed Size – Standard	60"x 75" Queen 29"x 74" Bunk (2)	60"x 75" Queen	60"x 75" Queen 29"x 74" Bunk (2)	60"x 75" Queen	60"x 75" Queen 29"x 74" Bunk (2)	60"x 75" Queen
Sleeping Capacity	10	6	8	6	6	6

¹ All dry weights are based on standard model features and do not include optional features or equipment.

² Carrying capacity is determined by subtracting Gross Dry Weight from GVWR. Carrying capacity includes all fluids, optional equipment and personal cargo.

³ Trailer length includes 3'6" for hitch, fifth wheel includes pin box.

⁴ Add 12" if equipped with optional roof air conditioner.

⁵ Approximate gallons.

⁶ Add 3" for awning.



WETLANDS WILDLIFE – BEAVERS

Weighing 30 to 68 lbs., the beaver is North America's largest rodent and nature's engineer. Its lodge is made of mud, stone and sticks and large enough to house several families. And, if the water isn't deep enough, they'll build a dam with small trees. Thanks to its sharp teeth (the incisors grow as they wear away), the beaver can fall a 3-inch diameter tree in just five minutes.

2000

MALLARD FEATURES AND BENEFITS



CARPETED FLUSH FLOOR SLIDE-OUTS

Provides single-level floor versatility on all super-slides.



BEDROOM INTERIORS

The bedroom features new night stands which are perfect for those personal items. Increased overhead cabinets provide additional storage for extra bedding and blankets.



DURA-GLIDE™ SLIDE-OUT SYSTEM

Our exclusive Dura-Glide™ System is the most reliable and durable available. Powered by an electric motor, its simple rack-and-pinion mechanism assures smooth, even, tooth-by-tooth operation.



OPTIONAL FIBERGLASS EXTERIOR

This new optional fiberglass exterior offers added protection from the elements. It also looks sleek and modern.



WATER PURIFIER

Pure drinking water is an important concern for EVERYONE. For 2000, Mallard towables will have an optional water purifier.



NAME BRAND APPLIANCES

Magic Chef® and Dometic® are just a few of the respected brand names you will find in your Mallard to insure comfort, quality, and reliability.

FLEETWOOD'S FAR-REACHING WARRANTY & SERVICE PROGRAM

TWO YEAR FULL WARRANTY

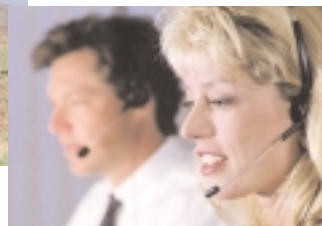
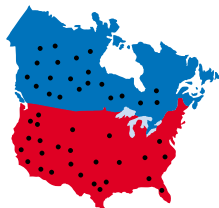


Leaving the Fleetwood dealership after you've purchased your RV doesn't mean leaving each dealer's commitment to your satisfaction behind. OWNERCARE, Fleetwood's extensive warranty and service program, provides two full years of dedicated customer satisfaction through total warranty coverage. OWNERCARE stands out as one of the RV industry's most comprehensive programs and includes systems & applications, construction, no deductible and no service charge.

NATIONAL COVERAGE

Have a question about your new Fleetwood? We've got it covered—with the nation's largest trained dealer network ready, willing and able to provide you with the services you need to make every moment of owning your RV enjoyable. Over 1,100 Fleetwood dealers throughout the U.S. and Canada are available to you 24 hours a day, seven days a week. With national coverage,

peace of mind and complete satisfaction are just a phone call away.



FULLY TRANSFERABLE

At Fleetwood RV, we're confident in our products and don't hesitate to stand behind them. Your newly purchased Fleetwood not only comes with one of the industry's most comprehensive warranties, it comes with a fully transferable option for the first 24 months.

AN EXTRA THANK YOU

Ask your dealer about your Thousand Trails complimentary 30-day membership certificate. It's your chance to get going in your new RV and enjoy some scenic camping plus our way of thanking you again for your purchase of a Fleetwood RV. Happy (Thousand) Trails!



24-HOUR ROADSIDE ASSISTANCE PROGRAM (FIRST YEAR COMPLIMENTARY)

Roadside assistance coverage is included with every Fleetwood towable recreational vehicle. Designed to bring you quality assistance from professional RV qualified service providers.

Coverage includes towing due to mechanical breakdown, flat tire and lock-out assistance.

See the 2000 Owners Manual for complete details. See dealer for details.

FLEETWOOD RV AND MOTOR SPORTS: A WINNING TEAM

At Fleetwood RV, we've got plenty of vehicles on the road that we're proud of. But did you know we also have some special drivers we like boasting about, too? Like Winston Cup driver Dale Jarrett and the Robert Yates Racing Team. For years, Fleetwood RV has been a proud sponsor of these exciting professional racers and we invite you to take your part in the thrill of live racing action. Look for Fleetwood RV as the official Recreational Vehicle of the following race tracks to make the most of your day at the race: California Speedway, Daytona International Speedway, Phoenix International Raceway and Talladega Superspeedway.



IMPORTANT—PLEASE READ:

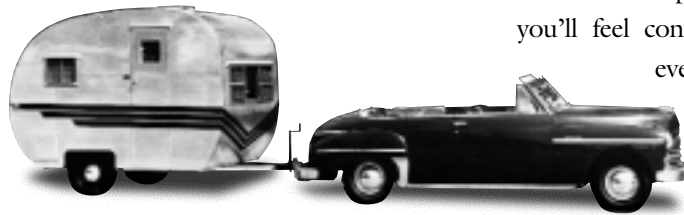
Product information and photography included in this brochure were as accurate as possible at the time of publication. Subsequent refinements may be evident in the actual product. Prices and specifications are subject to change without notice. Selected decorator items shown in the photographs are not part of the product unless specified. All liquid capacities are approximate and dimensions are nominal. Some models may not be available from all manufacturing plants. Floor plans are subject to change during the model year. Contact your dealer for complete details.

FLEETWOOD RV FOR 50 YEARS

Dear Friend,

This year is a very significant milestone for all of us at Fleetwood RV. Not only is this our new millennium model year, it is also the Golden Anniversary of our company. For 50 years, we have designed and built RVs so that our customers can travel the many beautiful highways and byways of America in comfort.

When Fleetwood began in 1950, we could only dream that 50 years later we would be the world's largest RV manufacturer, with the most popular, highly-recognized RVs



Fleetwood Sporter Trailer (circa 1950)



on the road. One thing's for sure—none of us could have done it alone. At Fleetwood, we have a team of the finest craftsmen, designers, engineers, and product line professionals—over 8,000 caring individuals from the plant floor to me—all working to be the best we can for you. We add to this the best dealer partners in the world so that you'll feel confident in your Fleetwood every mile of every stretch of road you travel.

CONTINUING THE COMMITMENT

For all of us at Fleetwood this first 50 years has been an exciting journey, from the early days of our original travel trailer and motor home prototypes to our current luxury models sporting the 50th Anniversary logo. We thank you for making us the great company we are today. Building the best product we can for your enjoyment is the key to our success, and you have my promise that we'll be here when you need us—for the next 50 years.

See you on the road!

Glenn Kummer

Chairman and CEO
Fleetwood Enterprises, Inc.

If your local dealer is not indicated, write to the address below,
call us toll-free 24-hours-a-day at

1-800-444-4905

or visit our website at www.fleetwood.com

FLEETWOOD RV

America's Favorite Recreational Vehicle

Fleetwood Enterprises, Inc. • RV Marketing • P.O. Box 7638 • Riverside, CA 92513-7638

© 1999 Fleetwood Enterprises, Inc.
Litho in USA 7/99

First Edition
Inventory Control No. 410001