



2003 Newmar American Star
TRAVEL TRAILER / FIFTH WHEEL



2003 Newmar American Star
TRAVEL TRAILER / FIFTH WHEEL



ASFW—32PKLS/Heron Blue

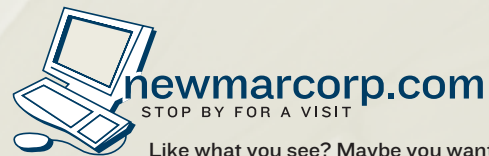


ASFW—36DBDB/Linen Beige



American Star Travel Trailer and Fifth Wheel **A SHINING EXAMPLE...**

of what happens when the hands that build every Newmar, including the exquisite London Aire, are the very hands that build the American Star. It's a shining example of our unwavering dedication to quality — and our dedication to the quality of life for those who own an American Star. Look around — you'll find pleasing design colors, ample storage, convenient access to service and brilliant lighting to illuminate your comfort. Newmar's uncompromising quality offers you the freedom to explore the world and let your life shine.



Like what you see? Maybe you want to learn more about who we are — to discover more about what we mean by "Newmar Quality: A Way Of Life." At newmarcorp.com, you'll find the latest updates on individual model specifications, floorplans, special packages and more. You'll also find a wealth of resources to become more familiar with our heritage, our history and our innovations.



ASFW—36DBDB/Linen Beige



ASFW—36DBDB/Linen Beige



ASFW—32RKLS/Heron Blue



AMERICAN STAR TRAVEL TRAILER / FIFTH WHEEL



American Star

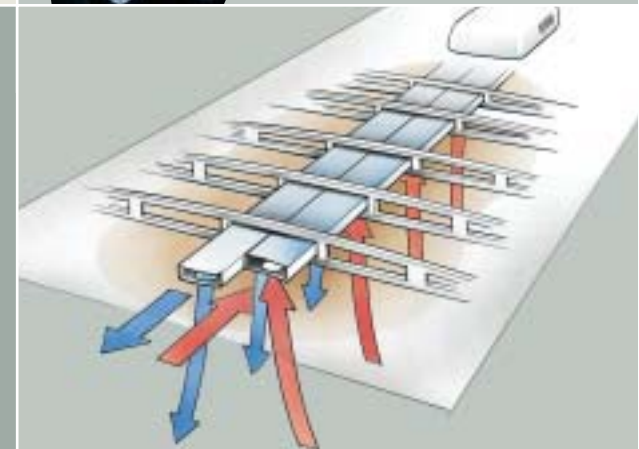
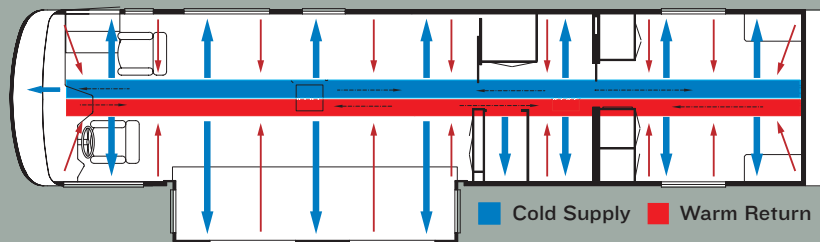
American Star Travel Trailer and Fifth Wheel A SHINING PRESENCE...

of elegant design and long-lasting durability that is unmistakably Newmar — the American Star. Smooth, one-piece fiberglass end caps and Filon® sidewall skins are as tough as they are beautiful. The fully-lined storage and easy-access utility compartments are spacious and functional, making for easy loading and easy living. New exterior graphics for 2003 add a finishing touch to this distinctive expression of Newmar innovation. The world is yours in the American Star. Experience it with comfort and class, no matter where the road and your heart lead you.



NEWMAR'S TRUE CENTRAL AIR SYSTEM —

Newmar's True Central Air utilizes not only full ducting for incoming cool air but also a separate fully ducted system to quickly and effectively remove warm air from every living area. True Central Air is standard on every Newmar.





ASTT—33BLFB / Cypress Green



ASTT—33BLFB / Cypress Green



American Star Travel Trailer **A SHINING LIGHT...**

inside the interior of every Newmar. A warmth that says, "Welcome home." True to form, the American Star Travel Trailer welcomes you with comfort and convenience at every turn. Upgraded interior lights add new brilliance and highlight the innovative features that have made the American Star Travel Trailer a favorite choice of owners — features like placing electrical outlets in the same places you would expect to find them in your home. Three new interior décor choices let you select a look and feel that best fits your personality and tastes. Welcome to comfort; welcome to the American Star.



ASTT—33BLFB / Cypress Green







American Star Fifth Wheel
A SHINING WARMTH...

inviting you inside. It's the character of every Newmar interior. True to form, the American Star Fifth Wheel is filled with Newmar innovation and intelligent design. It's these qualities that make the American Star Fifth Wheel uniquely Newmar, and the choice of three new interiors and optional upgrades make it uniquely yours. Other enhancements for 2003 include upgraded lighting, to complement the beauty and functionality of your living environment. The American Star Fifth Wheel surrounds you with comfort at every stop along the way.



ASFW—36DBDB/Linen Beige



ASFW—36DBDB/Linen Beige



ASFW—32RKLS/Heron Blue



PRIDE AND TRADITION

Maybe it's in the way Newmar employees take pride in their work and assume personal responsibility for each task they perform. Maybe it's because these talented individuals build each Newmar, from the American Star Travel Trailer up to the London Aire Coach, on the same assembly line. Maybe it's because Newmar's leadership believes real quality is not found on a chart but in a way of life.

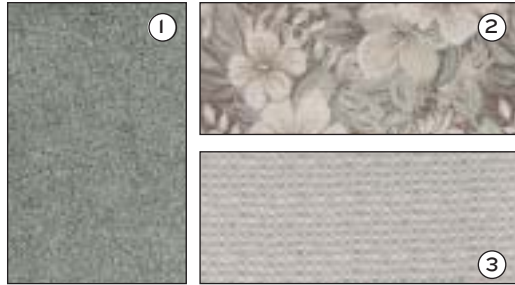
There are several things that make a Newmar special. Just like individuals, the qualities we value most are the inner ones. We build our products to reflect this way of thinking. We believe outer beauty is only worthwhile if it reflects inner quality. We back this quality with a one-year/12,000-mile, bumper-to-bumper limited warranty. It's a commitment not only to our products, but also to our Newmar owners. And as with many other industry-changing innovations, Newmar was the first to offer this level of coverage, leaving the rest to follow suit. It's all about freedom — comprehensive coverage and the peace of mind that goes along with it. This is the essence of Newmar.





Décor

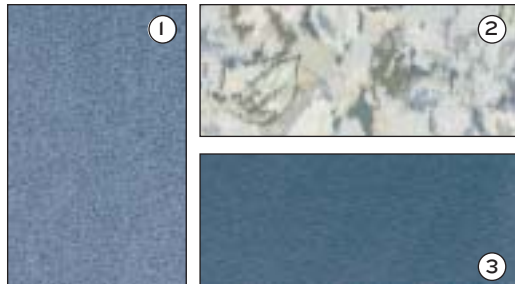
American Star Personal Details



AS3-468 / Cypress Green



AS3-469 / Linen Beige



AS3-470 / Heron Blue



Linen Beige / Fifth Wheel



Heron Blue / Fifth Wheel



Linen Beige / Travel Trailer



Heron Blue / Travel Trailer

EXTERIOR FINISH

We pay close attention to details like surface preparation and facility cleanliness for maximum results. Our finishing technicians are skilled and experienced. The result is your Newmar receives an uncommonly uniform finish that is as durable as it is beautiful.

DÉCOR

① carpet ② sofa ③ accent

With the range of fabrics, colors and textures available in Newmar's designs, you have a broad palette of self-expression. These elements work in harmony to create a unique experience that captivates and inspires. Newmar interiors are designed to delight your senses of sight and touch, and allow you to choose an interior as individual as you are.



newmarcorp.com
STOP BY FOR A VISIT

BRINGING UP-TO-THE-MINUTE INFORMATION TO YOU AT THE SPEED OF LIFE. YOU'LL FIND:

- Floorplans / Specifications
- New Interior / Exterior Colors
- Standard / Optional Equipment
- Newmar Photo Gallery
- Kountry Klub Information
- Factory Tour Experience



KONNECT

With so many impassioned Newmar owners out there, sharing the Newmar experience is only natural. We created the Kountry Klub to:

- Create an environment for friendship, fun, adventure and recreation
- Provide a forum and activities for all Newmar product owners to socialize as a group
- Streamline relations and communication between Newmar and Newmar owners

There are many benefits for our members to enjoy including the Klub magazine, rallies, caravans and special RV show events. Call 877-639-5582, or go to the Klub section of newmarcorp.com for details on our events calendar, Klub merchandise, Klub news and more!

EXPERIENCE THE NEWMAR FACTORY TOUR

If experience is a good teacher, let the Newmar Factory Tour experience teach you much. Feel the smooth contours of hand-finished countertops before they are set. Smell freshly sanded woods as cabinets are assembled. Take in the energy of motivated employees as they build each individual Newmar, on the same assembly line, with equal care and attention to detail. Consider yourself invited. Call 574-773-7791 for reservations and more information.



Newmar Quality: A Way of Life

NEWMAR CORPORATION
355 N DELAWARE ST
PO BOX 30
NAPPANEE IN 46550-0030
574-773-7791 Fax 574-773-2895
www.newmarcorp.com

Newmar 2003

www.newmarcorp.com

Official Newmar Dealer:

Some features shown in our literature are optional. Colors and finishes are photographic representations and may appear differently when viewing actual materials. Prices, specifications and floorplans are subject to change at Newmar's discretion without prior written notice or obligation. Please see your dealer for actual samples and specifications. ©2002 Newmar Corporation. Printed in the U.S.A. (6/02)

2003 American Star
Travel Trailer & Fifth Wheel

Newmar Corporation
2003 American Star Travel Trailer & Fifth Wheel
Specifications & Floorplans



2003 AMERICAN STAR TRAVEL TRAILER

STANDARD FEATURES

AIR CONDITIONING & HEATING

- Two - 30# LP Gas Bottles with Automatic Regulator
- 13,500 BTU Brisk Central Air Conditioner
- LP Leak Detector

APPLIANCES & ACCESSORIES

- Six Gallon Gas/Electric Water Heater with Direct Spark Ignition
- 22" Microwave
- Three Burner Range with Oven & Piezzo Ignition
- AM/FM Radio with Cassette
- Bifold Range Cover
- Dometic® 2652 Refrigerator (6 Cubic Foot)
- Range Hood with Light & Fan
- TV Antenna with Power Booster

CABINETS & FURNITURE

- Oak Hardwood Frame Cabinet Doors
- Jackknife Sofa with Throw Pillows
- Lifts on Bed to Access Storage Area
- Queen Bed - 60" X 75"

ELECTRICAL FEATURES

- 55 Amp Converter
- 12 Volt Battery
- 30 Amp Electrical Service

EXTERIOR FEATURES

- Filon Fiberglass Exterior Sides
- Gel-Coated Fiberglass End Caps
- Rear Ladder
- Seamless Aluminum Roof

INTERIOR FEATURES

- Mini Blinds with Drapes & Valances
- Quilted Bedspread with Reverse Sham & Accent Pillow
- Carpeting in Living Room and Bedroom
- Vinyl Floor in Kitchen, Foyer, and Bathroom Areas
- Hardwood Fascia/Fabric Fascia on Living Area Slide Out

PLUMBING & BATH FEATURES

- Monitor Panel
- Sewage Holding Tank Rinse
- Thetford Aqua Magic IV Stool
- Tub/Shower Surround with Shower Door
- Water Heater Bypass System

CONSTRUCTION FEATURES

- Aluminum Frame Sidewalls & Roof Construction, 16" On Center
- Roof R-Value Rating: 8
- Sidewall R-Value Rating: 8
- Floor R-Value Rating: 11

WINDOWS, AWNINGS, & VENTS

- Power Vent in Bathroom with Wall Switch
- Carefree® Fiesta Side Awning

OPTIONAL FEATURES

AIR CONDITIONING & HEATING

- 15,000 BTU Brisk Air Conditioner In Lieu of Standard (5 lbs.)

APPLIANCES & ACCESSORIES

- AM/FM Radio with Cassette, CD Player (1 lb.)
- Dometic® 2852 Refrigerator (8 Cubic Foot, 21 lbs.)

CABINETS & FURNITURE

- Maple Cream Cabinets

EXTERIOR FEATURES

- BriteTek® Roof with 7mm Decking (272 lbs.)
- Power Front Jacks (10 lbs.)
- Stabilizers Jacks, Two Pair (66 lbs.)

INTERIOR FEATURES

- Simulated Plank Floor in Kitchen & Foyer Area (30 lbs.)
- Day/Night Window Shades in Living & Bedroom Areas (5 lbs.)
- Lambrequin Window Treatment (20 lbs.)

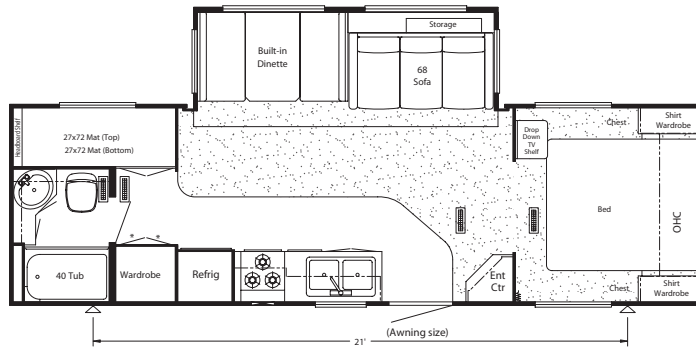
WINDOWS, AWNINGS, & VENTS

- Create-A-Breeze® Vent in Kitchen with Wall Switch (5 lbs.)
- Create-A-Breeze® Vent with Automatic Lift in Kitchen (5 lbs.)
- Skylight in Bathroom, Located Above Tub/Shower (2 lbs.)

TOWABLE CHASSIS FEATURES

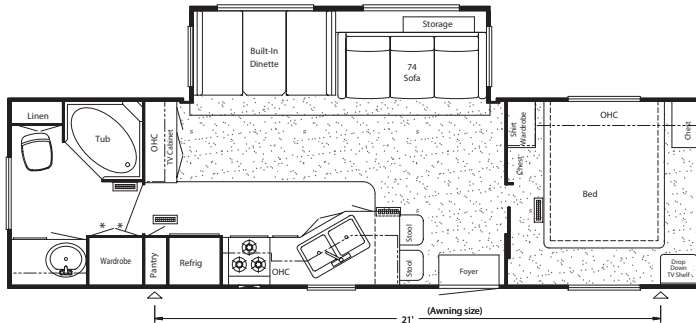
- Easy Lube Equalizers
- Shock Absorbers (2 lbs.)
- Spare Tire with Carrier & Cover (90 lbs.)

NEWMAR SPECIFICATIONS: 2003 AMERICAN STAR TRAVEL TRAILER



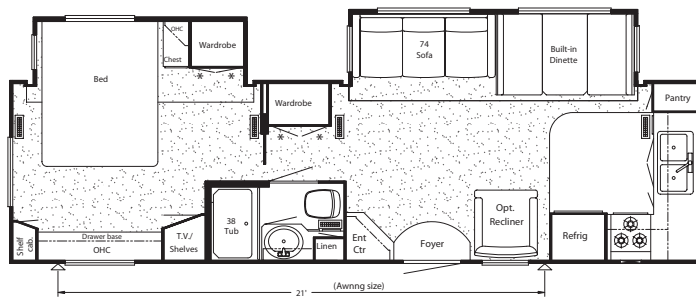
2003 American Star 30' DB-TT

Model	ASTT 30DB
TIRE SIZE	225/75R15-D
GAWR	5,080
GVWR	9,800
APP. LENGTH	31' 06"
APP. HEIGHT	10' 11"
WIDTH	96"
APP. DRY WEIGHT	7,879
APP. HITCH WEIGHT	788
FRESH WATER	42
GREY	42
SEWAGE CAP.	42
APP. HITCH HEIGHT	23"
HEAT CAP.	30,000



2003 American Star 31' FBRB-TT

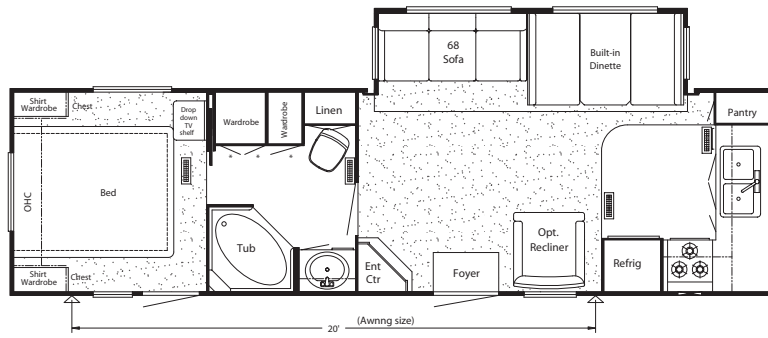
Model	ASTT 31FBRB
TIRE SIZE	225/75R15-D
GAWR	5,080
GVWR	9,800
APP. LENGTH	32' 9"
APP. HEIGHT	10' 11"
WIDTH	96"
APP. DRY WEIGHT	8,124
APP. HITCH WEIGHT	853
FRESH WATER	42
GREY	42
SEWAGE CAP.	42
APP. HITCH HEIGHT	23"
HEAT CAP.	30,000



2003 American Star 32' FKBS-TT

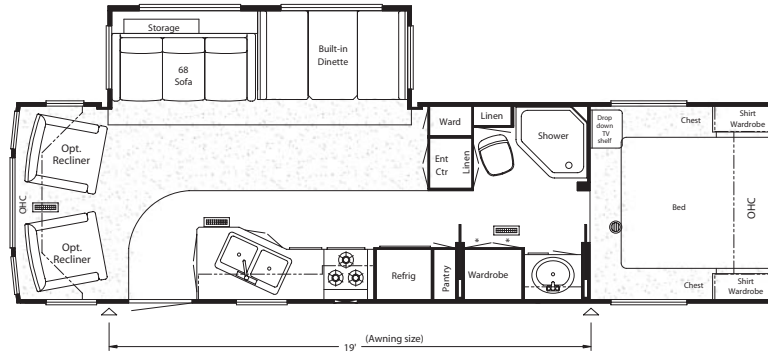
Model	ASTT 32FKBS
TIRE SIZE	225/75R15-D
GAWR	5,080
GVWR	11,250
APP. LENGTH	34'
APP. HEIGHT	10' 11"
WIDTH	96"
APP. DRY WEIGHT	9,250
APP. HITCH WEIGHT	1,018
FRESH WATER	42
GREY	42
SEWAGE CAP.	42
APP. HITCH HEIGHT	23"
HEAT CAP.	35,000

NEWMAR SPECIFICATIONS: 2003 AMERICAN STAR TRAVEL TRAILER



2003 American Star 32' FKWB-TT

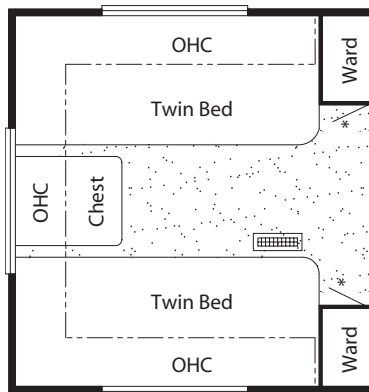
Model	ASTT 32FKWB
TIRE SIZE	225/75R15-D
GAWR	5,080
GVWR	11,250
APP. LENGTH	33' 2"
APP. HEIGHT	10' 11"
WIDTH	96
APP. DRY WEIGHT	8,056
APP. HITCH WEIGHT	1,124
FRESH WATER	42
GREY	42
SEWAGE CAP.	42
APP. HITCH HEIGHT	23"
HEAT CAP.	30,000



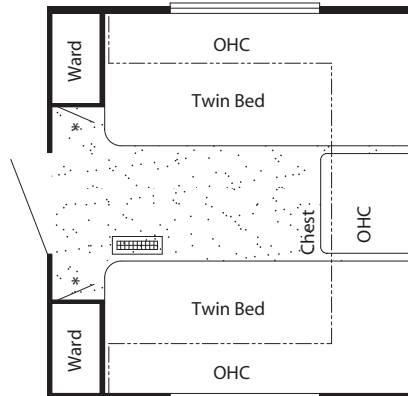
2003 American Star 33' BLFB-TT

Model	ASTT 33BLFB
TIRE SIZE	225/75R15-D
GAWR	5,080
GVWR	11,250
APP. LENGTH	34' 1"
APP. HEIGHT	10' 11"
WIDTH	96
APP. DRY WEIGHT	8,277
APP. HITCH WEIGHT	993
FRESH WATER	42
GREY	42
SEWAGE CAP.	42
APP. HITCH HEIGHT	23"
HEAT CAP.	35,000

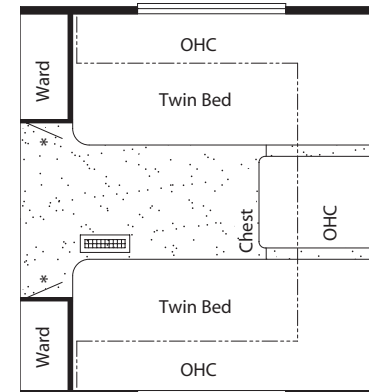
FLOORPLAN OPTIONS: 2003 AMERICAN STAR TRAVEL TRAILER



Option K083	Twin Beds ASTT: 32FKWB
--------------------	----------------------------------



Option K087	Twin Beds ASTT: 30DB
--------------------	--------------------------------



Option K086	Twin Bed ASTT: 33BLFB
--------------------	---------------------------------

2003 AMERICAN STAR FIFTH WHEEL

STANDARD FEATURES

AIR CONDITIONING & HEATING

- Two - 30# LP Gas Bottles with Automatic Regulator
- 13,500 BTU Brisk Central Air Conditioner
- LP Leak Detector

APPLIANCES & ACCESSORIES

- Six Gallon Gas/Electric Water Heater with Direct Spark Ignition
- 22" Microwave
- Three Burner Range with Oven & Piezzo Ignition
- AM/FM Radio with Cassette
- Bifold Range Cover
- Dometic® 2652 Refrigerator (6 Cubic Foot)
- Range Hood with Light & Fan
- TV Antenna with Power Booster

CABINETS & FURNITURE

- Oak Hardwood Frame Cabinet Doors
- Jackknife Sofa with Throw Pillows
- Lifts on Bed to Access Storage Area
- Queen Bed - 60" X 75"

ELECTRICAL FEATURES

- 55 Amp Converter
- 12 Volt Battery
- 30 Amp Electrical Service

EXTERIOR FEATURES

- Filon Fiberglass Exterior Sides
- Gel-Coated Fiberglass End Caps
- Rear Ladder
- Seamless Aluminum Roof

INTERIOR FEATURES

- Mini Blinds with Drapes & Valances
- Quilted Bedspread with Reverse Sham & Accent Pillow
- Carpeting in Living Room and Bedroom
- Vinyl Floor in Kitchen, Foyer, and Bathroom Areas
- Hardwood Fascia/Fabric Fascia on Living Area Slide Out

PLUMBING & BATH FEATURES

- Monitor Panel
- Sewage Holding Tank Rinse
- Thetford Aqua Magic IV Stool
- Tub/Shower Surround with Shower Door
- Water Heater Bypass System

CONSTRUCTION FEATURES

- Aluminum Frame Sidewalls & Roof Construction, 16" On Center
- Roof R-Value Rating: 8
- Sidewall R-Value Rating: 8
- Floor R-Value Rating: 11

WINDOWS, AWNINGS, & VENTS

- Power Vent in Bathroom with Wall Switch
- Carefree® Fiesta Side Awning

OPTIONAL FEATURES

AIR CONDITIONING & HEATING

- 15,000 BTU Brisk Air Conditioner In Lieu of Standard (5 lbs.)

APPLIANCES & ACCESSORIES

- AM/FM Radio with Cassette, CD Player (1 lb.)
- Dometic® 2852 Refrigerator (8 Cubic Foot, 21 lbs.)
- Ten Gallon Gas/Electric Water Heater with Direct Spark Ignition

CABINETS & FURNITURE

- Maple Cream Cabinets

EXTERIOR FEATURES

- BriteTek® Roof with 7mm Decking (272 lbs.)
- Power Front Jacks (10 lbs.)
- Stabilizers Jacks, One Pair (40 lbs.)

INTERIOR FEATURES

- Simulated Plank Floor in Kitchen & Foyer Area (30 lbs.)
- Day/Night Window Shades in Living & Bedroom Areas (5 lbs.)
- Lambrequin Window Treatment (20 lbs.)

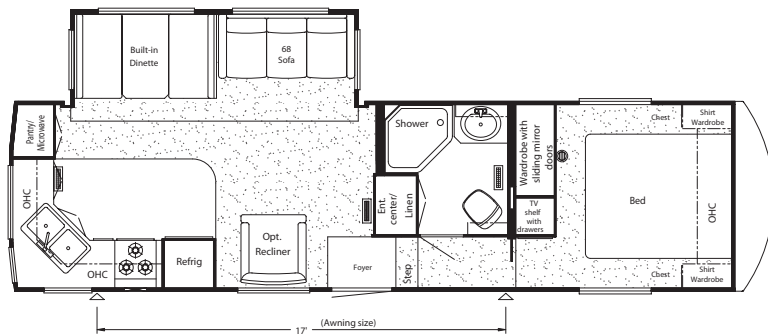
WINDOWS, AWNINGS, & VENTS

- Create-A-Breeze® Vent in Kitchen with Wall Switch (5 lbs.)
- Create-A-Breeze® Vent with Automatic Lift in Kitchen (5 lbs.)
- Skylight in Master Bathroom, Located Above Tub/Shower (2 lbs.)

TOWABLE CHASSIS FEATURES

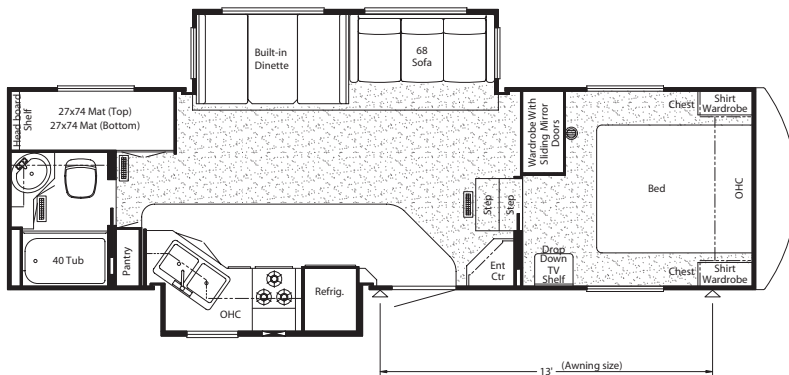
- Easy Lube Equalizers
- Shock Absorbers (2 lbs.)
- Spare Tire with Carrier & Cover (90 lbs.)

NEWMAR SPECIFICATIONS: 2003 AMERICAN STAR FIFTH WHEEL



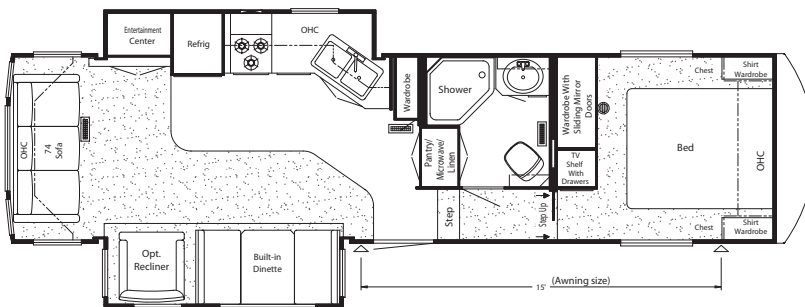
2003 American Star 30' BKCL-FW

Model	ASFW 30BKCL
TIRE SIZE	225/75R15-D
GAWR	5,080
GVWR	11,900
APP. LENGTH	32' 3"
APP. HEIGHT	12'
WIDTH	96"
APP. DRY WEIGHT	9,352
APP. HITCH WEIGHT	1,777
FRESH WATER	42
GREY	42
SEWAGE CAP.	42
APP. HITCH HEIGHT	46"
HEAT CAP.	35,000



2003 American Star 30' RBKS-FW

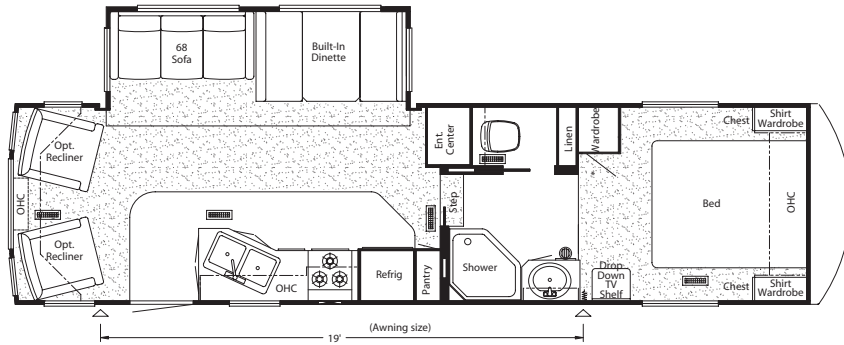
Model	ASFW 30RBKS
TIRE SIZE	225/75R15-D
GAWR	5,080
GVWR	11,900
APP. LENGTH	31' 7"
APP. HEIGHT	12'
WIDTH	96"
APP. DRY WEIGHT	8,946
APP. HITCH WEIGHT	1,655
FRESH WATER	42
GREY	42
SEWAGE CAP.	42
APP. HITCH HEIGHT	46"
HEAT CAP.	35,000



2003 American Star 32' RLKS-FW

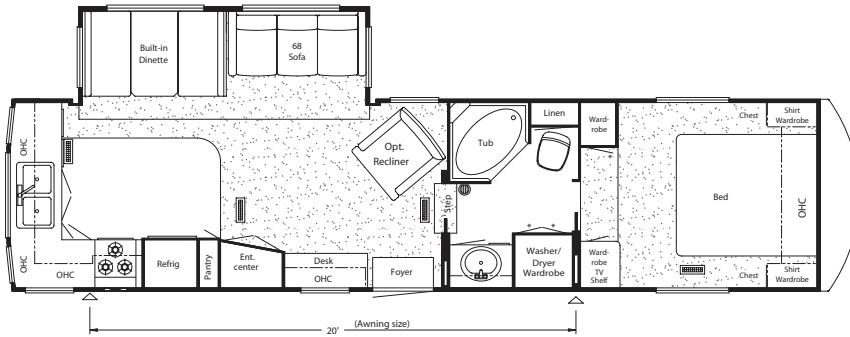
Model	ASFW 32RLKS
TIRE SIZE	225/75R15-D
GAWR	5,080
GVWR	11,900
APP. LENGTH	34' 2"
APP. HEIGHT	12'
WIDTH	96"
APP. DRY WEIGHT	10,284
APP. HITCH WEIGHT	2,159
FRESH WATER	42
GREY	42
SEWAGE CAP.	42
APP. HITCH HEIGHT	46"
HEAT CAP.	35,000

NEWMAR SPECIFICATIONS: 2003 AMERICAN STAR FIFTH WHEEL



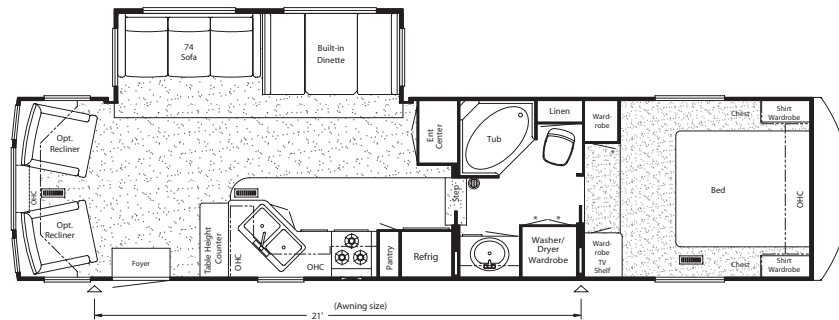
2003 American Star 32' RLRE-FW

Model	ASFW 32RLRE
TIRE SIZE	225/75R15-D
GAWR	5,080
GVWR	11,900
APP. LENGTH	33' 7"
APP. HEIGHT	12'
WIDTH	96"
APP. DRY WEIGHT	9,248
APP. HITCH WEIGHT	1,722
FRESH WATER	42
GREY	42
SEWAGE CAP.	42
APP. HITCH HEIGHT	46"
HEAT CAP.	35,000



2003 American Star 34' RKWD-FW

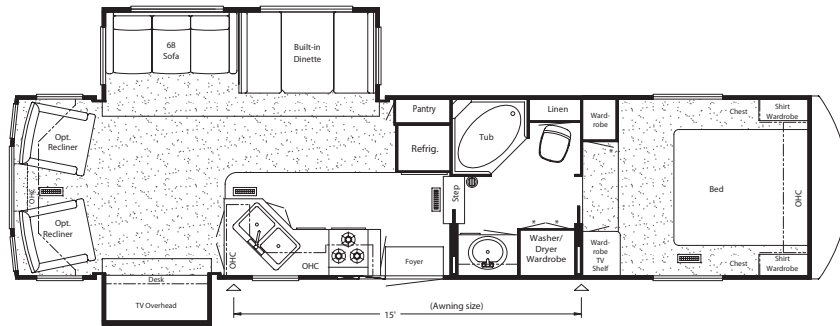
Model	ASFW 34RKWD
TIRE SIZE	225/75R15-D
GAWR	5,080
GVWR	11,900
APP. LENGTH	35' 7"
APP. HEIGHT	12'
WIDTH	96"
APP. DRY WEIGHT	9,937
APP. HITCH WEIGHT	1,789
FRESH WATER	42
GREY	42
SEWAGE CAP.	42
APP. HITCH HEIGHT	46"
HEAT CAP.	35,000



2003 American Star 34' RLCK-FW

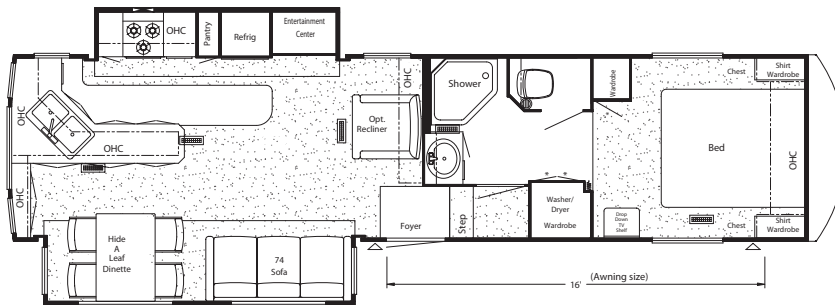
Model	ASFW 34RLCK
TIRE SIZE	225/75R15-D
GAWR	5,080
GVWR	11,900
APP. LENGTH	36' 8"
APP. HEIGHT	12'
WIDTH	96"
APP. DRY WEIGHT	10,187
APP. HITCH WEIGHT	2,037
FRESH WATER	42
GREY	42
SEWAGE CAP.	42
APP. HITCH HEIGHT	46"
HEAT CAP.	35,000

NEWMAR SPECIFICATIONS: 2003 AMERICAN STAR FIFTH WHEEL



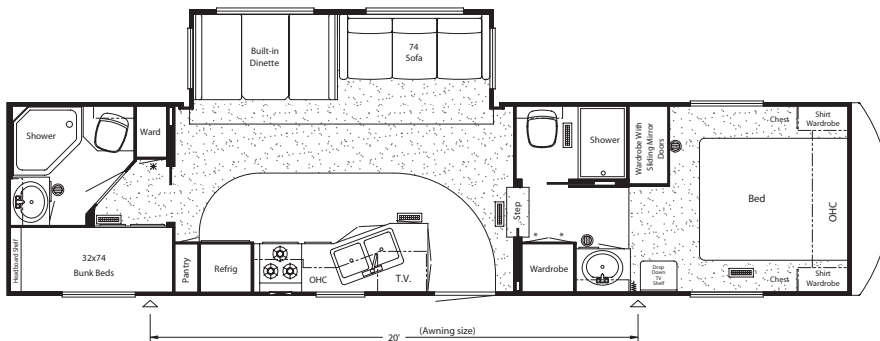
2003 American Star 34' RLES-FW

Model	ASFW 34RLES
TIRE SIZE	235/85R16-E
GAWR	6,000
GVWR	14,000
APP. LENGTH	36' 7"
APP. HEIGHT	12'
WIDTH	96"
APP. DRY WEIGHT	10,550
APP. HITCH WEIGHT	1,919
FRESH WATER	42
GREY	42
SEWAGE CAP.	42
APP. HITCH HEIGHT	47"
HEAT CAP.	35,000



2003 American Star 35' LKSA-FW

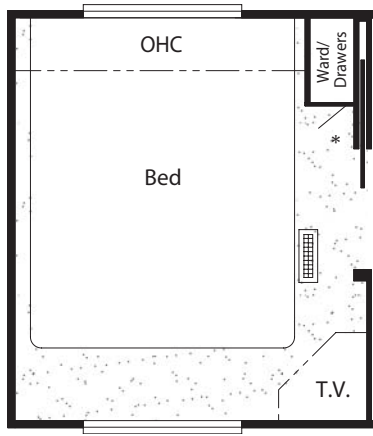
Model	ASFW 35LKSA
TIRE SIZE	235/85R16-E
GAWR	6,000
GVWR	14,000
APP. LENGTH	35' 11"
APP. HEIGHT	12' 1"
WIDTH	96"
APP. DRY WEIGHT	10,400
APP. HITCH WEIGHT	1,924
FRESH WATER	42
GREY	42
SEWAGE CAP.	42
APP. HITCH HEIGHT	47"
HEAT CAP.	35,000



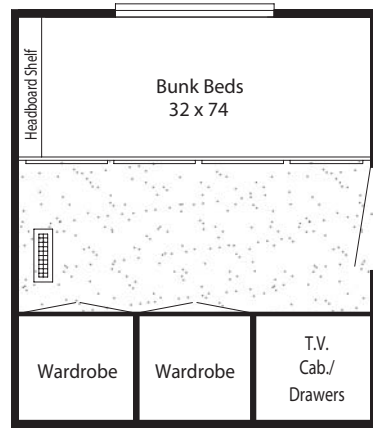
2003 American Star 36' DBDB-FW

Model	ASFW 36DBDB
TIRE SIZE	235/85R16-E
GAWR	6,000
GVWR	14,000
APP. LENGTH	36' 10"
APP. HEIGHT	12' 1"
WIDTH	96"
APP. DRY WEIGHT	10,480
APP. HITCH WEIGHT	1,975
FRESH WATER	42
GREY	42
SEWAGE CAP.	84
APP. HITCH HEIGHT	46"
HEAT CAP.	35,000

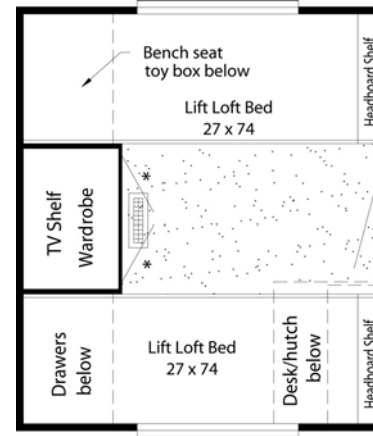
FLOORPLAN OPTIONS: 2003 AMERICAN STAR FIFTH WHEEL



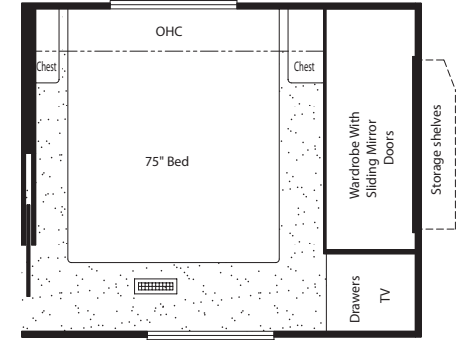
Option K650	Rear Bedroom
	ASFW: 36DBDB



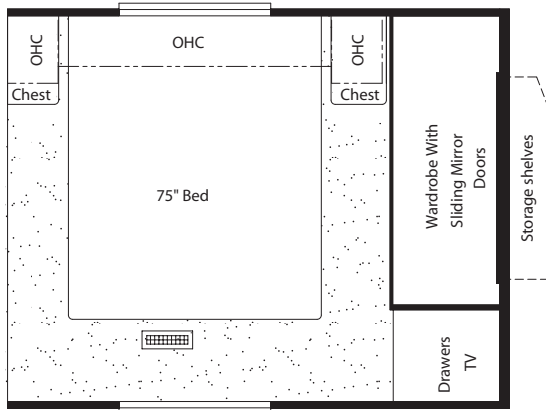
Option K660	Rear Bunkhouse Wardrobe
	ASFW: 36DBDB



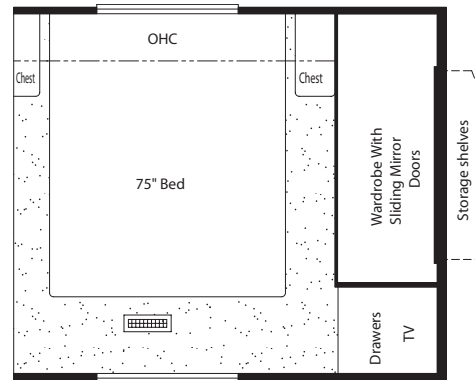
Option K680	Rear Loft
	ASFW: 36DBDB



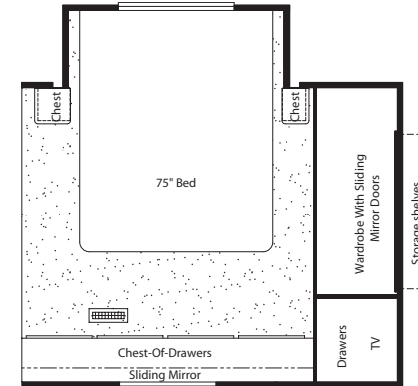
Option K925	Honeymoon Suite
	ASFW: 30BKCL, 32RLKS



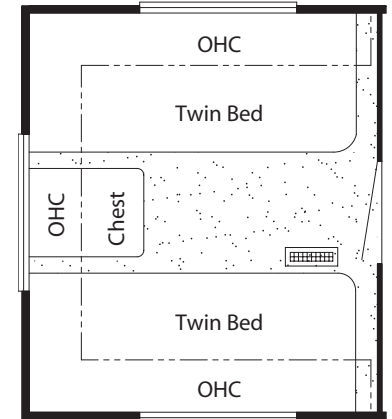
Option K927	Honeymoon Suite
	ASFW: 34RKWD, 34RLCK, 34RLES



Option K928	Honeymoon Suite
	ASFW: 30RBKS, 32RLRE, 35LKSA, 36DBDB

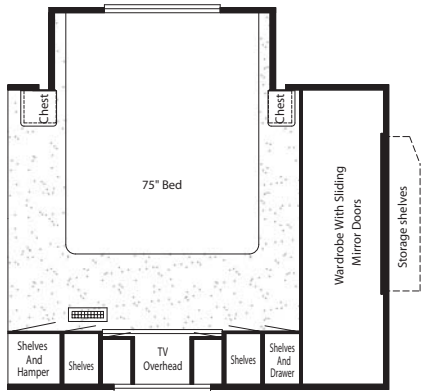


Option M715	Cabover Slideout With Dresser Ctr.
	ASFW: 34RKWD, 34RLCK

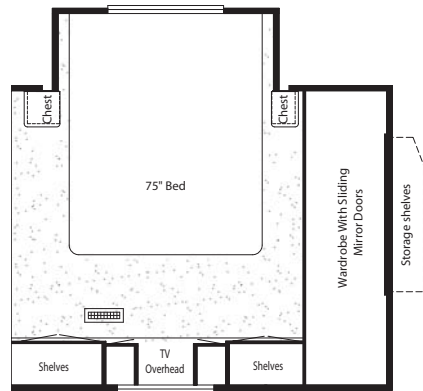


Option K510	Twin Bed
	ASFW: 36DBDB

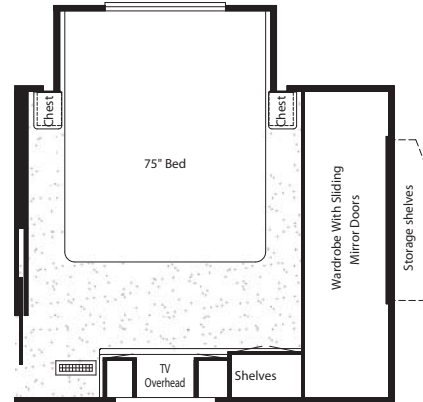
FLOORPLAN OPTIONS: 2003 AMERICAN STAR FIFTH WHEEL



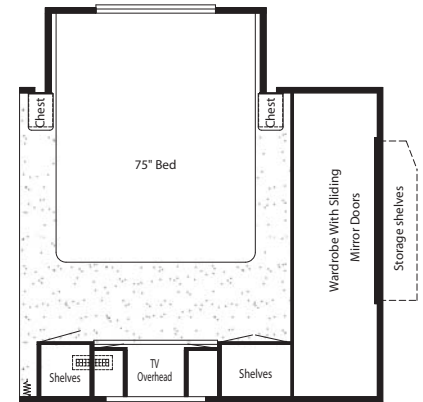
Option M719
Cabover Slideout With Vanity Ctr.
 ASFW: 34RKWD, 34RLCK



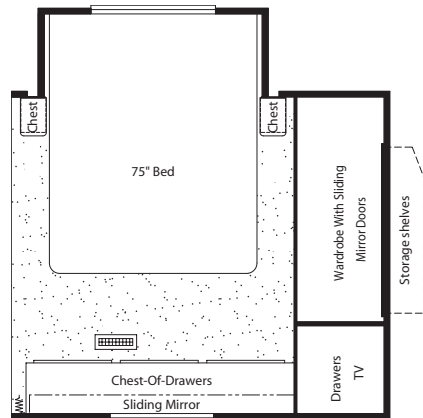
Option M720
Cabover Slideout With Vanity Over Dresser Ctr.
 ASFW: 34RKWD, 34RLCK



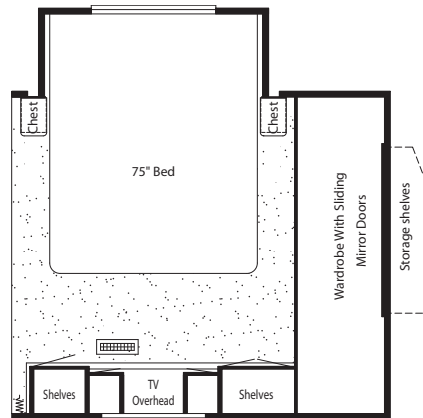
Option M727
Cabover Slideout with Vanity/Dresser Ctr.
 ASFW: 30BKCL, 32RLKS



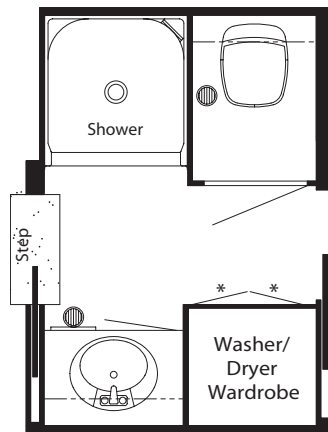
Option M732
Cabover Slideout With Vanity Ctr.
 ASFW: 32RLRE, 36DBDB



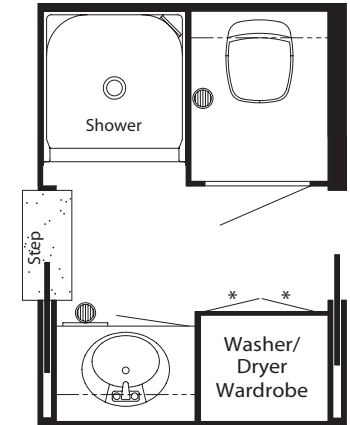
Option M733
Cabover Slideout With Dresser Ctr.
 ASFW: 32RLRE, 36DBDB



Option M734
Cabover Slideout With Vanity/Dresser Ctr.
 ASFW: 32RLRE, 36DBDB

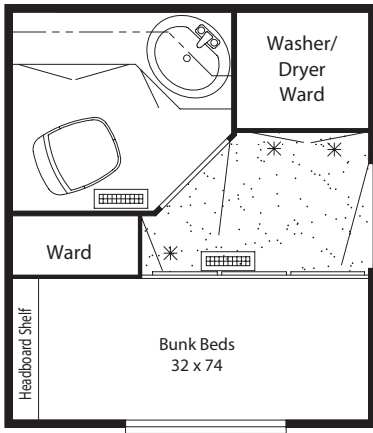


Option P183
Enclosed Stool With Shower
 ASFW: 34RKWD, 34RLCK

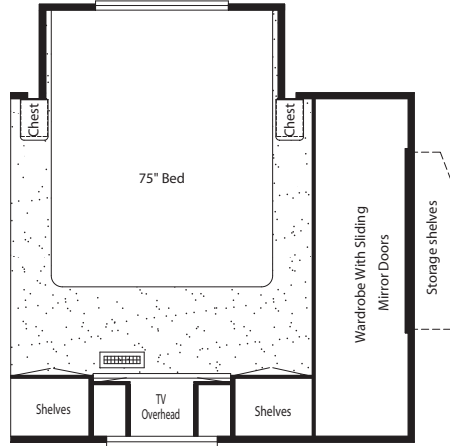


Option P184
Enclosed Stool With Shower
 ASFW: 34RLS

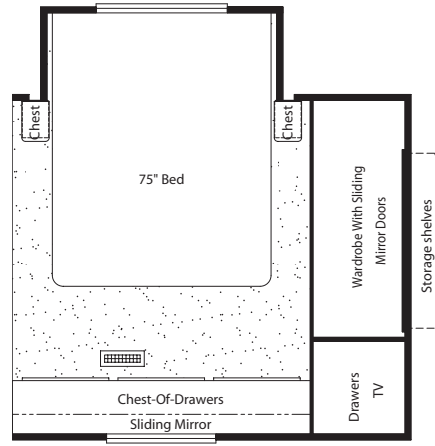
FLOORPLAN OPTIONS: 2003 AMERICAN STAR FIFTH WHEEL



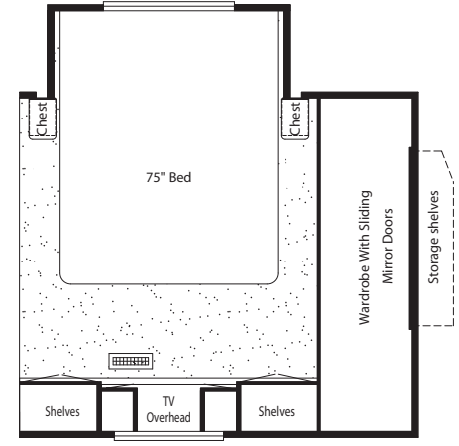
Option K750	Rear Bed/Bath
	ASFW: 36DBDB



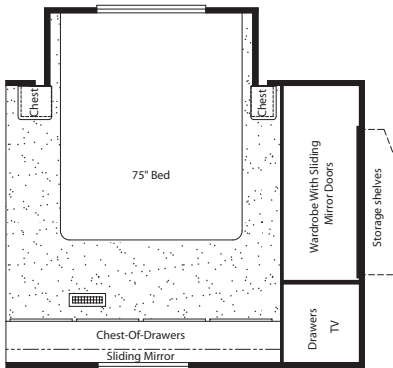
Option M160	Cabover Slideout With Vanity Ctr.
	ASFW: 30RBKS, 35LKSA



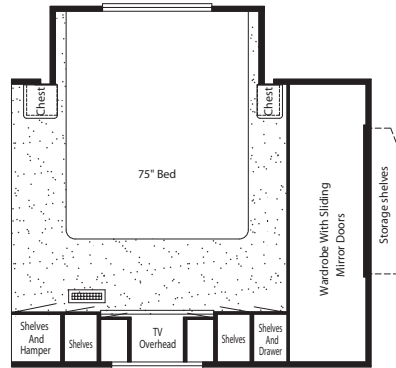
Option M161	Cabover Slideout With Dresser Ctr.
	ASFW: 30RBKS, 35LKSA



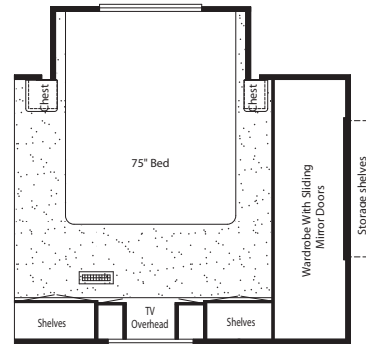
Option M162	Cabover Slideout With Vanity/Dresser Ctr.
	ASFW: 30RBKS, 35LKSA



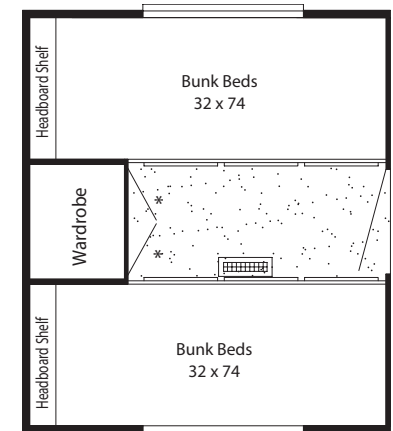
Option M800	Cabover Slideout With Dresser Ctr.
	ASFW: 34RLES



Option M801	Cabover Slideout With Vanity Ctr.
	ASFW: 34RLES

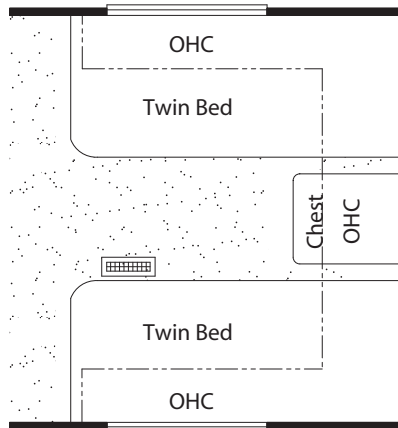


Option M802	Cabover Slideout With Vanity/Dresser Ctr.
	ASFW: 34RLES



Option K570	Rear Bunkhouse
	ASFW: 36DBDB

2003 American Star Travel Trailer & Fifth Wheel



Option K084	Twin Beds
	ASFW: 30BKCL, 30RBKS, 32RLKS, 32RLRE, 34RKWD, 34RLCK, 34RLES, 35LKSA, 36DBDB



Newmar Quality: A Way of Life.
355 N DELAWARE ST
PO BOX 30
NAPPANEE IN 46550-0030
574.773.7791 • FAX: 574.773.2895
www.newmarcorp.com

We invite you to visit our state-of-the-art production facility in Nappanee, Indiana. Plant tours are offered at 10 a.m. and 1 p.m. Monday through Friday.

Don't forget to check out the Newmar Kountry Klub. All you need for eligibility is to be a proud owner of any of the fine Newmar recreational vehicles.

Some features shown in our literature are optional. Colors and finishes are photographic representations and may appear differently when viewing actual materials. Prices, specifications, and floorplans are subject to change at Newmar's discretion without prior written notice or obligation. Please see your dealer for actual samples and specifications.

©2002 Newmar Corporation. Printed in the U.S.A. (9/05/02)