

# REAL-LITE

BY PALOMINO

TRUCK CAMPERS



EXPLORE  
THE GREAT  
OUTDOORS





## REAL-LITE CONSTRUCTION

All Palomino truck campers are aluminum framed with laminated construction to offer a light weight yet durable product at an affordable price.

- 1 White or grey gel coat exterior
- 2 High Density Block Foam Insulation
- 3 Alpha Super Flex Membrane Roof
- 4 Plywood Substrate
- 5 Decorative Wall Board
- 6 Framing: Fully Welded Aluminum Super Structure
- 7 Heated Insulated basement (*Max Series Only*)



# REAL-LITE STANDARDS & OPTIONS

## SOFT SIDE FEATURES

- 200 Watt Solar Panels (2)
- 100 Amp Lithium Battery
- Co2 Detector
- Maxx Air Vent
- 20,000 BTU Furnace
- 3.3 cu ft 12V Refrigerator
- Pre-Wired for Electric Jacks
- Convertible Jacks
- Electric Roof Lift
- Bluetooth® Charge Controller
- LED Interior Lighting
- Roof Ladder Bracket
- Hi Gloss Fiberglass Exterior
- Lift Remote
- Built With Azdel Construction
- Broad Maple Cabinets

## SOFT SIDE OPTIONS

- 2nd 100 Amp Lithium Battery
- 11,000 BTU Air Conditioner
- AM/FM, iPod, Bluetooth® Stereo
- Dually Bracket
- Electric Jacks
- Entry Step (4)
- Hot Water/Outside Shower (1600/1604/1605/1609 Only; STD on 1608/1600)
- Rear Bumper w/LED Lights (1609/1608/1610 Only)
- 5' Box Awning (1604 Only)
- 7' Box Awning (1605/1609/1608/1610 Only)
- Roof Rack
- Short Bed PKG (1609 Only)

## HARD SIDE FEATURES

- 200 Watt Solar Panels (2)
- 100 Amp Lithium Battery
- Co2 Detector
- Maxx Air Vent
- On Demand Water Heater
- Outside Shower w/ Hot & Cold Water
- LED Interior Lighting
- Frameless Windows
- Solar Prep
- Front Cap w/Line-X® Windshield
- Hi Gloss Exterior Fiberglass
- 20,000 BTU Furnace
- 12V Refrigerator (3.3 cu ft 1805/1803; 11 cu ft 1806)
- Bluetooth® Charge Controller
- Roof Ladder Bracket
- Built w/Azdel Construction
- Broad Maple Cabinets
- Electric Jacks

## HARD SIDE OPTIONS

- 2nd 100 Amp Lithium Battery
- 11,000 BTU Air Conditioner
- 22" LED TV 12 Volt
- Dually Bracket
- Entry Step (4)
- Euro Bunk (1806 Only)
- Microwave (N/A On 1805)
- Rear Bumper (1806 Only)
- Rear Awning (1806 Only)
- Short Bed PKG (1806 Only)
- Side Awning w/LED Lights
- Solid Surface Countertops (1806 Only)
- Roof Rack

## HARD SIDE MAX FEATURES

- 200 Watt Solar Panels (2)
- 100 Amp Lithium Battery
- 22" STD HD TV
- AM/FM CD/DVD Player w/Theater sound and Ext. Speakers
- Co2 Detector
- Maxx Air Vent
- Frameless Insulated Windows
- Electric Jacks
- On Demand Water Heater
- Hot/Cold Water Outside Shower
- LED Interior Lighting
- 12V Tank Heat Pads
- 11 cu ft 12V Refrigerator
- Heated, Enclosed Basement
- Front Cap w/Line-X® Windshield
- Hi Gloss Exterior Fiberglass
- Microwave
- Integrated Bumper
- 20,000 BTU Furnace
- Azdel Construction
- Roof Ladder Bracket
- Bluetooth® Charge Controller
- Rear Awning
- Solid Surface Countertops
- Broad Maple Cabinets

## HARD SIDE MAX OPTIONS

- 2nd 100 Amp Lithium Battery
- 11,000 BTU Air Conditioner
- Dually Bracket
- Entry Step (4)
- Short Bed PKG (1910/1912 Only)
- Side Awning w/LED Lights
- Theater Seating (1912/1914/2114 Only)

## ESSENTIAL PACKAGE

(Standard on 1916 Only)

Solid Surface Countertops

Sundeck

Rear and Side Awning

Outside Kitchen/Ent. Center

(32" TV, 3 cu ft Fridge)

MORryde® StepAbove Entry Step

## TRUCK BED COMPATIBILITY

### COMPACT TRUCK

Chevrolet® Colorado™/  
Toyota® Tacoma™

RL-1600: 5'-8' Bed



### 1/2 TON

F-150/1500

RL-780H: 5'-6"-8' Bed

RL-1604: 5'-8' Bed

RL-1605: 6'-6"-8' Bed

RL-1608: 6'-6" Bed

RL-1609: 6'-6"-8' Bed

RL-1805: 5'-6"-8' Bed



### 3/4 TON

F-250/2500

RL-1610: 8' Bed

RL-1803: 5'-6"-8' Bed

RL-1806: 6'-6"-8' Bed

RL-1910: 6'-6"-8' Bed

RL-1912: 6'-6"-8' Bed



### 1 TON

F-350/3500

RL-1914: 8' Bed

RL-1916: 8' Bed

RL-2114: 8' Bed



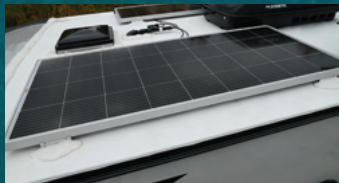
1. Palomino strongly recommends you check your trucks owners manual or contact the manufacturer for your trucks capabilities.
2. The center of gravity measurement is as built. Your options and loading on the truck may adjust this measurement.



# REAL-LITE POPULAR FEATURES

## OPTIONAL ROOF RACK

Our Optional Roof Rack System Provides Numerous Options for You to Take Your Outdoor Toys Along with You When You Travel. They are Rated to Hold Up to 300 lb and Can Be Used with the Roof in the Upright Position. (Roof Rack N/A 1806, MAX Models.)



## OPTIONAL SOLAR PANEL

100W Charging Power Helps Keep Battery System Charged for Extended Adventures.



## CHARGING PORT

Allows You to Charge or Maintain Your Onboard Battery with Ease from the Exterior of Your Palomino Camper.



## SOLAR CHARGE CONTROLLER

Our Optional Solar Charge Controller Makes it Easy for You to Monitor Your Onboard Battery System.



## HANGING STORAGE

Our New Hanging Pantry Provides You with Almost 100% More Storage Than the Upper Cabinets They Replace! They are Also Portable so Loading and Unloading Them is Now so Much More Convenient. (Soft-Side Only)



## SPACIOUS PARTY DECK

An Industry-First, the HS 1916 Boasts a Full Fold-Down 8' x 7' Party Deck Patio with a 32" TV and Small Fridge.



## FIBERGLASS FRONT CAP

Our Fiberglass Front Cap Has a Fully Integrated Windshield. Palomino RV Partnered with the Leaders in O.E. Automotive Windshield Manufacturing Guardian Industries as Well as Dow Chemicals to Create This Palomino Exclusive Feature. This Automotive Style Windshield Not Only Looks Great Rolling Down the Road, But Also Creates an Open Inviting Environment in the Palomino Hard-Side Max Cabover Bunks While You Enjoy Great Panoramic Views.



## EURO BUNK

The Palomino RV Euro Bunk is Easily Lowered Over the Dinette with the Touch of a Button to Allow for Additional Sleeping Area. (Only Available on HS-1806)



## SOFT-SIDE

---



## HARD-SIDE

---



## HARD-SIDE MAX

---





## ROOF LIFT SYSTEM

Newly Designed Electric Roof Lift System Has Been Extensively Tested to Provide Great Reliability and is Mounted on the Outside of the Unit for Ease of Maintenance and to Free Up Valuable Space Inside Your Camper.

TRAVEL  
POSITION



CAMPING  
POSITION

## REAL-LITE SOFT-SIDE

No matter the size of your truck, we have a Soft-Side truck camper perfect for you. Thanks to the electric lift you can easily set up your camper without hand-cranking the top up or down. And with the optional remote, it works with just a push of a button. Plus, our 55" one-piece door makes it that much easier to enter and exit the camper, compared to our competition's 46" or 47" door. The Soft-Side series comes in a white or grey gel coat exterior.



# RL-1600

DESIGNED FOR  
COMPACT TRUCKS



LENGTH: 12' 8" WIDTH: 6' 4" FLOOR LENGTH: 6' CLOSED HEIGHT: 6' INT. HEIGHT: 7'

UVW: 1197 LP GAS: 20 WHEEL WELL WIDTH: 40" CAB OVER BED: 66" x 75" DINETTE BED: 36" x 73"

CENTER OF GRAVITY<sup>2</sup> 22" FRESH: 8.5 GAL BLACK: N/A

# RL-1604

1/2 TON TRUCK  
5' TO 8' BED



LENGTH: 13' 5" WIDTH: 7' 2" FLOOR LENGTH: 7' CLOSED HEIGHT: 6' INT. HEIGHT: 7'

UVW: 1594 LP GAS: 20 WHEEL WELL WIDTH: 46 1/2" CAB OVER BED: 60" x 80" DINETTE BED: 36" x 90"

CENTER OF GRAVITY<sup>2</sup> 22" FRESH: 15 GAL BLACK: N/A

# RL-1605

1/2 TON TRUCK  
6' 6" TO 8' BED



LENGTH: 12' 10" WIDTH: 7' 2" FLOOR LENGTH: 8' CLOSED HEIGHT: 6' INT. HEIGHT: 7'

UVW: 1591 LP GAS: 20 WHEEL WELL WIDTH: 46 1/2" CAB OVER BED: 60" x 80" DINETTE BED: 36" x 72"

CENTER OF GRAVITY<sup>2</sup> 39" FRESH: 15 GAL BLACK: N/A

# RL-1609

1/2 TON TRUCK  
6' 6" TO 8' BED



LENGTH: 14' 10" WIDTH: 7' 2" FLOOR LENGTH: 8' 6" CLOSED HEIGHT: 6' INT. HEIGHT: 7'

UVW: 1876 LP GAS: 20 WHEEL WELL WIDTH: 46 1/2" CAB OVER BED: 60" x 80" DINETTE BED: 36" x 72"

CENTER OF GRAVITY<sup>2</sup> 37" FRESH: 15 GAL BLACK: 7 GAL

# RL-1608

1/2 TON TRUCK  
6' 6" BED



LENGTH: 14' 10" WIDTH: 7' 2" FLOOR LENGTH: 8' 6" CLOSED HEIGHT: 6' INT. HEIGHT: 7'

UVW: 1795 LP GAS: 20 WHEEL WELL WIDTH: 46 1/2" CAB OVER BED: 60" x 80" DINETTE BED: 36" x 72"

CENTER OF GRAVITY<sup>2</sup> 37" FRESH: 15 GAL BLACK: 7 GAL

# RL-1610

1/2 TON TRUCK  
8' BED



LENGTH: 14' 4" WIDTH: 7' 2" FLOOR LENGTH: 9' 6" CLOSED HEIGHT: 6' INT. HEIGHT: 7'

UVW: 1910 LP GAS: 30 WHEEL WELL WIDTH: 46 1/2" CAB OVER BED: 60" x 80" DINETTE BED: 36" x 72"

CENTER OF GRAVITY<sup>2</sup> 45" FRESH: 15 GAL BLACK: 7 GAL

1. Palomino strongly recommends you check your trucks owners manual or contact the manufacturer for your trucks capabilities.
2. The center of gravity measurement is as built. Your options and loading on the truck may adjust this measurement.





## REAL-LITE HARD-SIDE

---

Our lightweight, Hard-Side truck campers are packed with great features and keep a lighter payload, thanks to the fully aluminum welded frame. We've redesigned the interior to provide greater cabinet storage, and upgraded frameless windows. Our campers fit multiple truck sizes so check page 3 to find your favorite floorplan.



# R-780H

## O.V.E.



1/2 TON TRUCK 5' 6" TO 8' BED

LENGTH: 12' 9" WIDTH: 7' 2" FLOOR LENGTH: 6' 6" EXT. HEIGHT: 7' 11" INT. HEIGHT: 6' 6"

UVW: 1309 LP GAS: 20 WHEEL WELL WIDTH: 48" CAB OVER BED: 60" x 80" DINETTE BED: 36" x 75"

CENTER OF GRAVITY<sup>2</sup> 23" FRESH: 8 GAL GRAY: N/A BLACK: N/A

# RL-1803



1/2 TON TRUCK 5' 6" TO 8' BED

LENGTH: 16' 5" WIDTH: 7' 2" FLOOR LENGTH: 8' 2" EXT. HEIGHT: 7' 11" INT. HEIGHT: 6' 6"

UVW: 1870 LP GAS: 20 WHEEL WELL WIDTH: 48" CAB OVER BED: 60" x 80" DINETTE BED: 32" x 60"

CENTER OF GRAVITY<sup>2</sup> 27" FRESH: 21 GAL GRAY: 8 GAL BLACK: 8 GAL

# RL-1805



1/2 TON TRUCK 5' TO 8' BED

LENGTH: 12' 9" WIDTH: 7' 2" FLOOR LENGTH: 6' 6" EXT. HEIGHT: 7' 11" INT. HEIGHT: 6' 6"

UVW: 1561 LP GAS: 20 WHEEL WELL WIDTH: 48" CAB OVER BED: 60" x 80" DINETTE BED: 28" x 82"

CENTER OF GRAVITY<sup>2</sup> 23" FRESH: 8 GAL GRAY: N/A BLACK: N/A

# RL-1806

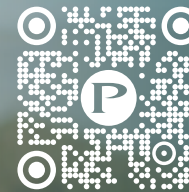


3/4 TON TRUCK 6' 6" TO 8' BED

LENGTH: 18' WIDTH: 7' 8" FLOOR LENGTH: 9' EXT. HEIGHT: 8' 4" INT. HEIGHT: 6' 11"

UVW: 2460 LP GAS: 30 WHEEL WELL WIDTH: 48" CAB OVER BED: 60" x 80" DINETTE BED: 32" x 60"

CENTER OF GRAVITY<sup>2</sup> 42" FRESH: 21 GAL GRAY: 7 GAL BLACK: 8 GAL



Scan with your Mobile Device

Virtual Tours, Photos, videos, follow Palomino on Social Media, and more!

[www.palominorv.com](http://www.palominorv.com)

1. Palomino strongly recommends you check your trucks owners manual or contact the manufacturer for your trucks capabilities.
2. The center of gravity measurement is as built. Your options and loading on the truck may adjust this measurement.





## **REAL-LITE HARD-SIDE MAX**

---

Our Hard-Side Max series is our premium product. With the insulated, frameless windows and heated basement, this camper is ready for adventure. Our exclusive front cap windshield opens the expansive living space with light and creates an inviting atmosphere.



# RL-1910

3/4 TON TRUCK  
6' 6" TO 8' BED



LENGTH: 18' 4" WIDTH: 8' 2" FLOOR LENGTH: 9' EXT. HEIGHT: 9' 9" INT. HEIGHT: 6' 8"

UVW: 3037 LP GAS: 30 WHEEL WELL WIDTH: 48" CAB OVER BED: 60" x 80" DINETTE BED: 24" x 63"

CENTER OF GRAVITY? 37" FRESH: 45 GAL GRAY: 20 GAL BLACK: 20 GAL

# RL-1912

3/4 TON TRUCK  
6' 6" TO 8' BED



LENGTH: 18' 4" WIDTH: 8' 2" FLOOR LENGTH: 9' EXT. HEIGHT: 9' 9" INT. HEIGHT: 6' 8"

UVW: 3261 LP GAS: 30 WHEEL WELL WIDTH: 48" CAB OVER BED: 60" x 80" DINETTE BED: 42" x 58"

CENTER OF GRAVITY? 37" FRESH: 45 GAL GRAY: 20 GAL BLACK: 20 GAL

# RL-1914

1 TON TRUCK  
8' BED



LENGTH: 19' 3" WIDTH: 8' 2" FLOOR LENGTH: 10' EXT. HEIGHT: 9' 9" INT. HEIGHT: 6' 8"

UVW: 3493 LP GAS: 30 WHEEL WELL WIDTH: 48" CAB OVER BED: 60" x 80" DINETTE BED: 43" x 69"

CENTER OF GRAVITY? 46" FRESH: 45 GAL GRAY: 20 GAL BLACK: 20 GAL

# RL-1916

1 TON TRUCK  
8' BED



LENGTH: 20' WIDTH: 8' 2" FLOOR LENGTH: 10' 8" EXT. HEIGHT: 9' 9" INT. HEIGHT: 6' 8"

UVW: 3572 LP GAS: 30 WHEEL WELL WIDTH: 48" CAB OVER BED: 60" x 80" DINETTE BED: 41" x 60"

CENTER OF GRAVITY? 53" FRESH: 45 GAL GRAY: 20 GAL BLACK: 20 GAL

# RL-2114

1 TON TRUCK  
8' BED



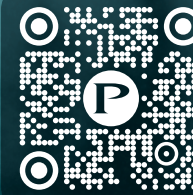
LENGTH: 19' 8" WIDTH: 8' 2" FLOOR LENGTH: 10' EXT. HEIGHT: 9' 9" INT. HEIGHT: 6' 10"

UVW: 3460 LP GAS: 30 WHEEL WELL WIDTH: 48" CAB OVER BED: 60" x 80" DINETTE BED: 40" x 69"

CENTER OF GRAVITY? 45" FRESH: 45 GAL GRAY: 20 GAL BLACK: 20 GAL

1. Palomino strongly recommends you check your trucks owners manual or contact the manufacturer for your trucks capabilities.
2. The center of G gravity measurement is as built. Your options and loading on the truck may adjust this measurement.





Scan with your Mobile Device

Virtual Tours, Photos, videos, follow Palomino on Social Media, and more!

www.palominorv.com



**PRE-DELIVERY INSPECTION FACILITY**

20,000 square feet of quality assurance. The bare essentials for a premium product. This state-of-the-art facility gives immediate daily feedback to production for quality assurance in every unit built.



**FOREST RIVER OWNER'S GUIDE**

Now you can have your Owner's Manual with you wherever you are. Download our FREE App from the App Store or Google Play and you'll have the information right at your fingertips.

**CUSTOMER SATISFACTION**



www.ForestRiverBuyLocal.com

**SPECIFICATION DEFINITIONS**

**GVWR (Gross Vehicle Weight Rating):** is the maximum permissible weight of the unit when fully loaded. It includes all weights, inclusive of all fluids, cargo, optional equipment and accessories. For safety and product performance do NOT exceed the GVWR.

**GAWR (Gross Axle Weight Rating):** is the maximum permissible weight, including cargo, fluids, optional equipment and accessories that can be safely supported by a combination of all axles.

**UVW (Unloaded Vehicle Weight):**<sup>1</sup> is the typical weight of the unit as manufactured at the factory. It includes all weight at the unit's axle(s) and tongue or pin and LP Gas. The UVW does not include cargo, fresh potable water, additional optional equipment or dealer installed accessories.

**CCC (Cargo Carrying Capacity):**<sup>1</sup> is the amount of weight available for fresh potable water, cargo, additional optional equipment and accessories. CCC is equal to GVWR minus UVW. Available CCC should accommodate fresh potable water (8.3 LWW per gallon). Before filling the fresh water tank, empty the black and gray tanks to provide for more cargo capacity.

Each Forest River RV is weighed at the manufacturing facility prior to shipping. A label identifying the unloaded vehicle weight of the actual unit and the cargo carrying capacity is applied to every Forest River RV prior to leaving our facilities.

The load capacity of your unit is designated by weight, not by volume, so you cannot necessarily use all available space when loading your unit.

<sup>1</sup> Estimated Average based on standard build optional equipment

**REAL-LITE WARRANTY**

Palomino will stand behind our products 100%. For complete details on our warranty program, please see your Palomino dealer.

- 1 2 year fiberglass warranty
- 2 Lifetime Alpha Super Flex roof warranty
- 3 2-3 year warranty on appliances (See manual for details)
- 4 1 year warranty against any manufacturing defects



Learn More  
Scan this barcode using a QR Reader on your smart phone to learn more about Forest River.

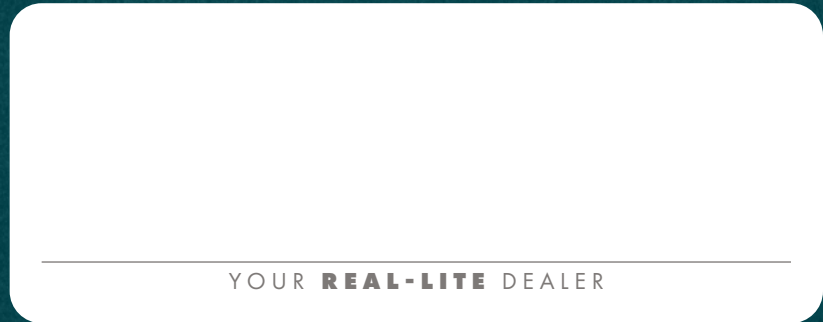


A Berkshire Hathaway company.

**PALOMINO**

1047 East M-86 | Colon, MI 49040  
P: 269.432.3271 | F: 269.432.2516

www.palominorv.com



YOUR **REAL-LITE** DEALER

All information contained in this brochure is believed to be accurate at the time of publication. However, during the model year, it may be necessary to make revisions and Forest River, Inc., reserves the right to make all such changes without notice, including prices, colors, materials, equipment and specifications as well as the addition of new models and the discontinuance of models shown in this brochure. Therefore, please consult with your Forest River dealer and confirm the existence of any materials, design or specifications that are material to your purchase decision. © 2023 Palomino RV, a Division of Forest River, Inc., a Berkshire Hathaway Company. All Rights Reserved. 12/18 Real-Lite

Follow Palomino on: