



ASPEN TRAIL  
TRAVEL TRAILERS




Make Every Journey Your Own



**Dutchmen**<sup>®</sup>  
THE SOUL OF RVING





**Each new day brings wonderment. The opportunity to discover something new. To pursue your dreams and fill your soul. This is the Soul of RVing.**

# MORE STANDARD FEATURES MORE VALUE

Everything we put into our innovative floorplans are designed to maximize storage and comfort. We don't stop there, to ensure peace of mind after the purchase we have the industry's best RV warranty, 100% pre-delivery inspection, and the leader in parts and service. While other manufacturers offer features as options, we prefer to make those same features standard.

We've built a reputation for bringing RV owners more standard features for less money for over 35 years, and it's a reputation we plan to keep.



## 100% Pre-Delivery Inspection

At Dutchmen, quality is standard. Every single RV that comes off the line receives its own pre-delivery inspection—a thorough 253-point check to ensure accurate measurements, as well as fully-functional electronics and components.



## The Industry's Best RV Warranty

Our industry-best 3 Year Warranty means you don't have to wrangle over the details. We deliver value by clearly outlining the major components we back for the first three years.



## The Leader In Parts & Service

Replacement parts. Routine checkups. Expert advice. We've got it all covered. When only the best RV services will suffice, our industry-leading parts and service department is ready to help you get back on the road—and stay there longer than ever before.

**Tow Vehicle Disclaimer.** CAUTION: Owners of Dutchmen recreational vehicles are solely responsible for the selection and proper use of tow vehicles. All customers should consult with a motor vehicle manufacturer or their dealer concerning the purchase and use of suitable tow vehicles for Dutchmen products. Dutchmen disclaims any liability or damages suffered as a result of the selection, operation, use or misuse of a tow vehicle. DUTCHMEN'S LIMITED WARRANTY DOES NOT COVER DAMAGE TO THE RECREATIONAL VEHICLE OR THE TOW VEHICLE AS A RESULT OF THE SELECTION, OPERATION, USE OR MISUSE OF THE TOW VEHICLE. REFERENCE DUTCHMEN MANUFACTURING OWNERS MANUAL FOR LIMITED WARRANTY DETAILS. © 2022 Dutchmen 9-1-2022-ASPEN TRAIL. MY 2023



# Dutchmen<sup>®</sup>

## 35<sup>TH</sup> ANNIVERSARY

Dutchmen began in 1988, this model year we are celebrating our 35th Anniversary. Our long term success comes from never losing focus on our core mission “We work for the customer”.

At Dutchmen we build a variety of floorplans to meet the needs of your family and lifestyle. More people than ever before are embracing the RV lifestyle, whether they are full timers, weekend warriors or just want to take the road less traveled and boondock. With more standard features than its competitors and a focus on quality, value, and design, you will feel at home from the first moment.

Everything we put into our Aspen Trail is designed not only to help you hit the road in comfort and style, but to also help you make memories with family, friends, and fellow travelers along the way.

You will have peace of mind knowing we have OVER 300 Strong Nationwide Dealer Network across North America and our industry-leading service center in Goshen, Indiana. So rest assured no matter where your travels take you, the best-resourced RV manufacturing company in the world is behind you all the way.

As each new day unfolds and limitless adventure awaits, Rving is about immersing yourself in laughter and storytelling with family and friends around the campfire. For 35 years Dutchmen has been in the business of making memories. This is the Soul of the RV.





**Destination: Aspen Trail** has the most dynamic range of floorplan options to fit any camping style. With more standard features than its competitors and a focus on quality, value, and design, Aspen Trail delivers the best RV in its class. Whether your trail leads across this great country or simply a staycation, the Aspen Trail is your base camp.

- **Aspen Trail Power Package** - Aspen Trail Power Stabilizers, Power Awning and Power Tongue Jack make setting up and breaking down your campsite a breeze.
- **Fully Enclosed Underbelly** - all of your RVs vital functions are kept out of the elements. Plus, this extra layer of protection means you can travel further into the year.
- **Aluminum Steps** - stability you need when coming and going from your Aspen Trail. Easy to expand and store away, these aluminum steps deliver a sound platform.



 To see more features, visit [dutchmen.com](https://dutchmen.com)



# Standard features in every floor plan.



Power Stabilizer Jacks



Power Tongue Jack



Fireplace



Dual 20lb Propane Tanks



Queen Bed



Backup Camera Prep



Prepped for WIFI 4G LTE



Solar Prep





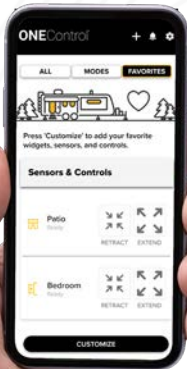
FEEL AT HOME FROM THE  
FIRST MOMENT.



# 35 YEARS ANNIVERSARY PACKAGE

Standard on ALL Floorplans

SOLO  
ONE Control



The SOLO ONE Control allows complete control over many of your RV's most important functions through a mobile app. From awnings and lighting, water tanks, and more with just a touch of a button.



### SAFETY

Receive custom notifications regarding your RV maintenance reminders and system status.



### CONTROL

Conveniently control your lighting, slide-outs, and awnings from the palm of your hand.



### ALERTS

Receive system status, low battery voltage, and tank levels.

### SLIDE-OUT TOPPERS



### ON-DEMAND TANKLESS WATER HEATER



DISCLAIMER: Product information is as accurate as possible as of the date of brochure publication. All features, floor plans and specifications in this brochure are subject to change without notice. Please consult Dutchmen's website at [www.Dutchmen.com](http://www.Dutchmen.com) for current product information and specifications.



To see more features, visit [dutchmen.com](http://dutchmen.com)





## Interior Features:

With spacious floor plans and all the amenities of home,

- Queen Bed
- Central Command Center
- Upgraded Beauflor Lino
- LED Interior Lighting
- Seamless Countertops
- High Rise Faucet
- 3 Burner Range w/ Oven and Glass Cover
- Microwave
- Stainless Steel Single Bowl Farm Sink
- 10 cu. ft. 12 Volt Refrigerator
- Optional 8 cu. ft. Gas/Electric Refrigerator
- Range Hood w/ Light and Exhaust Fan
- Blackout Roller Shades in Slide Out
- LED Fireplace (Slide Out Models)
- 13,500-BTU A/C (Optional 15K BTU)
- High Output Furnace
- On-Demand Tankless Water Heater



Titanium



Tungsten



Flooring



Woodgrain



Countertop

# Choose how your next adventure unfolds.



## ASPEN TRAIL 2260RBS

Length: 26' 11" Weight: 5,577 lbs. Sleeps: 3-4  
Hitch: 565 lbs. Height: 11' 3"



## ASPEN TRAIL 2550BHS

Length: 29' 6" Weight: 6,018 lbs. Sleeps: 3-4  
Hitch: 630 lbs. Height: 11' 3"



## ASPEN TRAIL 2790BHS

Length: 32' 1" Weight: 6,620 lbs. Sleeps: 3-4  
Hitch: 635 lbs. Height: 11' 3"



## ASPEN TRAIL 2850BHS

Length: 32' 11" Weight: 6,720 lbs. Sleeps: 3-4  
Hitch: 727 lbs. Height: 11' 3"

\*Length is defined as the distance from the centerline of hitch pin/coupler to rear bumper of trailer.

\*\*Our weights represent how most units are built, inclusive of many commonly-ordered options.

\*\*\*Fresh water capacity includes water heater capacity.

DISCLAIMER: Product information is as accurate as possible as of the date of brochure publication. All features, floor plans and specifications in this brochure are subject to change without notice. Please consult Dutchmen's website at [www.Dutchmen.com](http://www.Dutchmen.com) for current product information and specifications.



All info & specs are for units manufactured after 9/3/2022



ASPEN TRAIL



# Choose how your next adventure unfolds.



**ASPEN TRAIL 2860RLS**  
Length: 32' 11" Weight: 6,535 lbs. Sleeps: 3-4  
Hitch: 734 lbs. Height: 11' 3"



**ASPEN TRAIL 2880RKs**  
Length: 33' 1" Weight: 6,741 lbs. Sleeps: 3-4  
Hitch: 679 lbs. Height: 11' 2"



**ASPEN TRAIL 2910BHs**  
Length: 33' 3" Weight: 6,639 lbs. Sleeps: 3-4  
Hitch: 782 lbs. Height: 11' 3"



**ASPEN TRAIL 3020BHs**  
Length: 34' 6" Weight: 7,048 lbs. Sleeps: 3-4  
Hitch: 909 lbs. Height: 11' 4"

\*Length is defined as the distance from the centerline of hitch pin/coupler to rear bumper of trailer.

\*\*Our weights represent how most units are built, inclusive of many commonly-ordered options.

\*\*\*Fresh water capacity includes water heater capacity.

DISCLAIMER: Product information is as accurate as possible as of the date of brochure publication. All features, floor plans and specifications in this brochure are subject to change without notice. Please consult Dutchmen's website at [www.Dutchmen.com](http://www.Dutchmen.com) for current product information and specifications.



All info & specs are for units manufactured after 9/3/2022

# Choose how your next adventure unfolds.



## ASPEN TRAIL 3120BHS

Length: 35' 1" Weight: 6,872 lbs. Sleeps: 3-4  
Hitch: 868 lbs. Height: 11' 3"



## ASPEN TRAIL 3210BHDS

Length: 36' 10" Weight: 7,896 lbs. Sleeps: 3-4  
Hitch: 1,075 lbs. Height: 11' 4"



## ASPEN TRAIL 3230BHS

Length: 36' 3" Weight: 8,034 lbs. Sleeps: 3-4  
Hitch: 992 lbs. Height: 11' 6"



## ASPEN TRAIL 3280BHS

Length: 36' 3" Weight: 7,089 lbs. Sleeps: 3-4  
Hitch: 936 lbs. Height: 11' 6"



### STANDARD Solar Spirit I Kit Includes

- Side Port
- Roof Port
- Charge Controller Prep
- Inverter Prep



All info & specs are for units manufactured after 9/3/2022



# Aspen Trail Specifications

## Aspen Trail Options

Floorplan	Weights (lbs)			Tanks (Gallons)			Dimensions	
	Shipping Weight	Hitch Weight	Carrying Capacity	Fresh Water Capacity	Waste Water Capacity	Gray Water Capacity	Exterior Length	Exterior Height
2260RBS	5,577	565	2,023	46	42	42	26' 11"	11' 3"
2550BHS	6,018	630	1,582	46	42	84	29' 6"	11' 3"
2790BHS	6,620	635	2,180	46	42	84	32' 1"	11' 3"
2850BHS	6,720	727	2,080	46	42	84	32' 11"	11' 3"
2860RLS	6,535	734	2,265	46	42	42	32' 11"	11' 3"
2880RKS	6,697	679	2,059	46	42	84	33' 1"	11' 2"
2910BHS	6,639	782	2,161	46	42	42	33' 3"	11' 3"
3020BHS	7,048	909	2,632	46	84	84	34' 6"	11' 4"
3120BHS	6,872	868	1,928	46	42	84	35' 1"	11' 3"
3210BHDS	7,896	1,075	1,784	46	42	42	36' 10"	11' 4"
3230BHS	8,034	992	1,646	46	42	42	36' 3"	11' 6"
3280BHS	7,089	936	1,711	46	42	42	36' 3"	11' 6"



8 cu. ft. Gas/Electric  
RV Refrigerator



Tri-Fold Hide-a-Bed  
in place of Flip Sofa



Free Standing Dinette & Chairs  
(2860 & 2880 only)



Second Air Conditioner  
13,500 BTU Non-Ducted  
Bedroom A/C  
(Available on All Super Slide Models)



Second A/C Prep w/ 50 AMP Service  
(Mandatory on 3210 & 3230)  
Forced on Second A/C



All info & specs are for units  
manufactured after 9/3/2022

\*Length is defined as the distance from the centerline of hitch pin/coupler to rear bumper of trailer.

\*\*Our weights represent how most units are built, inclusive of many commonly-ordered options.

\*\*\*Fresh water capacity includes water heater capacity.

DISCLAIMER: Product information is as accurate as possible as of the date of brochure publication. All features, floor plans and specifications in this brochure are subject to change without notice. Please consult Dutchmen's website at [www.Dutchmen.com](http://www.Dutchmen.com) for current product information and specifications.



ASPEN TRAIL

# Choose how your next adventure unfolds.



**ASPEN TRAIL 1900BWE**  
Length: 24' 8" Weight: 4,268 lbs. Sleeps: 3-4  
Hitch: 511 lbs. Height: 10' 8"



**ASPEN TRAIL 2050QBWE**  
Length: 24' 10" Weight: 4,356 lbs. Sleeps: 3-4  
Hitch: 465 lbs. Height: 10' 6"



**ASPEN TRAIL 2150BHWE**  
Length: 25' 11" Weight: 4,645 lbs. Sleeps: 3-4  
Hitch: 515 lbs. Height: 10' 7"



**ASPEN TRAIL 2180RDWE**  
Length: 25' 5" Weight: 4,390 lbs. Sleeps: 3-4  
Hitch: 524 lbs. Height: 11' 3"

\*Length is defined as the distance from the centerline of hitch pin/coupler to rear bumper of trailer.

\*\*Our weights represent how most units are built, inclusive of many commonly-ordered options.

\*\*\*Fresh water capacity includes water heater capacity.

DISCLAIMER: Product information is as accurate as possible as of the date of brochure publication. All features, floor plans and specifications in this brochure are subject to change without notice. Please consult Dutchmen's website at [www.Dutchmen.com](http://www.Dutchmen.com) for current product information and specifications.



All info & specs are for units manufactured after 9/3/2022



# Choose how your next adventure unfolds.



**ASPEN TRAIL 2340BHSWE**  
Length: 27' 8" Weight: 5,601 lbs. Sleeps: 3-4  
Hitch: 605 lbs. Height: 11' 3"



**ASPEN TRAIL 2390RKSWE**  
Length: 27' 4" Weight: 5,602 lbs. Sleeps: 3-4  
Hitch: 607 lbs. Height: 11' 4"



**ASPEN TRAIL 2550BHSWE**  
Length: 29' 6" Weight: 6,000 lbs. Sleeps: 3-4  
Hitch: 650 lbs. Height: 11' 3"



**ASPEN TRAIL 2810BHSWE**  
Length: 32' 6" Weight: 6,418 lbs. Sleeps: 3-4  
Hitch: 825 lbs. Height: 11' 4"

\*Length is defined as the distance from the centerline of hitch pin/coupler to rear bumper of trailer.

\*\*Our weights represent how most units are built, inclusive of many commonly-ordered options.

\*\*\*Fresh water capacity includes water heater capacity.

DISCLAIMER: Product information is as accurate as possible as of the date of brochure publication. All features, floor plans and specifications in this brochure are subject to change without notice. Please consult Dutchmen's website at [www.Dutchmen.com](http://www.Dutchmen.com) for current product information and specifications.



All info & specs are for units manufactured after 3/15/2023

# Choose how your next adventure unfolds.



**ASPEN TRAIL 2340BHSWE**  
Length: 27' 8" Weight: 5,601 lbs. Sleeps: 3-4  
Hitch: 605 lbs. Height: 11' 3"



**ASPEN TRAIL 2390RKSWE**  
Length: 27' 4" Weight: 5,602 lbs. Sleeps: 3-4  
Hitch: 607 lbs. Height: 11' 4"



**ASPEN TRAIL 2550BHSWE**  
Length: 29' 6" Weight: 6,000 lbs. Sleeps: 3-4  
Hitch: 650 lbs. Height: 11' 3"



**ASPEN TRAIL 2810BHSWE**  
Length: 32' 6" Weight: 6,418 lbs. Sleeps: 3-4  
Hitch: 825 lbs. Height: 11' 4"

\*Length is defined as the distance from the centerline of hitch pin/coupler to rear bumper of trailer.

\*\*Our weights represent how most units are built, inclusive of many commonly-ordered options.

\*\*\*Fresh water capacity includes water heater capacity.

DISCLAIMER: Product information is as accurate as possible as of the date of brochure publication. All features, floor plans and specifications in this brochure are subject to change without notice. Please consult Dutchmen's website at [www.Dutchmen.com](http://www.Dutchmen.com) for current product information and specifications.



All info & specs are for units manufactured after 3/15/2023



# Choose how your next adventure unfolds.



**ASPEN TRAIL 2850BHSWE**  
Length: 32' 9" Weight: 6,687 lbs. Sleeps: 3-4  
Hitch: 713 lbs. Height: 11' 3"



**ASPEN TRAIL 2860RLSWE**  
Length: 32' 9" Weight: 6,598 lbs. Sleeps: 3-4  
Hitch: 776 lbs. Height: 11' 3"



**ASPEN TRAIL 2880RKSWE**  
Length: 33' 1" Weight: 6,620 lbs. Sleeps: 3-4  
Hitch: 706 lbs. Height: 11' 2"



## STANDARD WEST COAST Solar Spirit II Kit Includes

- 100 Watt Panel
- 10 Amp Charge Controller
- Side Port



\*Length is defined as the distance from the centerline of hitch pin/coupler to rear bumper of trailer.

\*\*Our weights represent how most units are built, inclusive of many commonly-ordered options.

\*\*\*Fresh water capacity includes water heater capacity.

DISCLAIMER: Product information is as accurate as possible as of the date of brochure publication. All features, floor plans and specifications in this brochure are subject to change without notice. Please consult Dutchmen's website at [www.Dutchmen.com](http://www.Dutchmen.com) for current product information and specifications.

**i** All info & specs are for units manufactured after 3/15/2023

# Aspen Trail West Coast Specifications

## Aspen Trail West Coast Options



Tri-Fold Hide-a-Bed  
in place of Flip Sofa  
N/A 1900, 2050, 2250

Floorplan	Weights (lbs)			Tanks (Gallons)			Dimensions	
	Shipping Weight	Hitch Weight	Carrying Capacity	Fresh Water Capacity	Waste Water Capacity	Gray Water Capacity	Exterior Length	Exterior Height
1900RBWE	4,268	511	3,332	52	38	38	24' 8"	10' 8"
2050QBWE	4,356	465	3,244	52	38	38	24' 10"	10' 6"
2150BHWE	4,645	515	2,955	52	38	38	25' 11"	10' 7"
2180RDWE	4,390	524	3,210	52	38	38	25' 5"	11' 3"
2340BHSWE	5,601	605	1,999	52	38	38	27' 8"	11' 3"
2390RKSWE	5,602	598	2,080	52	38	38	27' 4"	11' 4"
2550BHSWE	6,000	607	1,600	52	38	76	29' 6"	11' 3"
2810BHSWE	6,418	825	3,262	52	38	38	32' 6"	11' 4"
2850BHSWE	6,687	713	2,993	52	38	76	32' 9"	11' 3"
2860RLSWE	6,598	776	3,082	52	38	38	32' 9"	11' 3"
2880RKSWE	6,697	939	2,983	52	38	76	33' 1"	11' 2"

\*Length is defined as the distance from the centerline of hitch pin/coupler to rear bumper of trailer.

\*\*Our weights represent how most units are built, inclusive of many commonly-ordered options.

\*\*\*Fresh water capacity includes water heater capacity.

DISCLAIMER: Product information is as accurate as possible as of the date of brochure publication. All features, floor plans and specifications in this brochure are subject to change without notice. Please consult Dutchmen's website at [www.Dutchmen.com](http://www.Dutchmen.com) for current product information and specifications.



All info & specs are for units manufactured after 9/3/2022



ASPEN TRAIL





CRAFTED FOR  
YOUR LIFESTYLE





Select floor plans

## Exterior Features:

- Backup Camera Prep
- Mega Pass Thru Storage Compartment w/ LED Light
- Radial Tires
- Aluminum Entry Steps (Main Entry Only)
- Diamond Plate Rock Guard
- Power Awning w/ LED Light
- Black Tank Flush
- Outside Shower
- Power Stabilizers
- Smooth Metal Front End
- Fully Enclosed Underbelly
- Slide-out Toppers

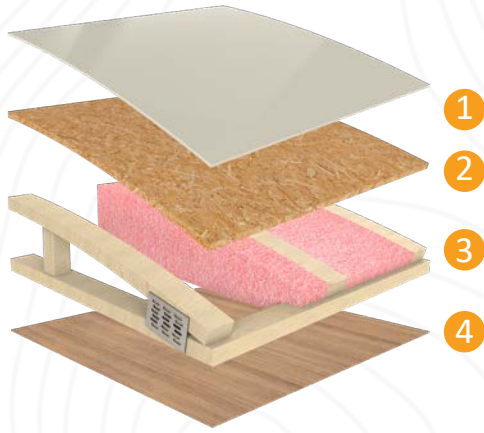


To see more features, visit [dutchmen.com](http://dutchmen.com)



# See the DUTCHMEN® Construction Advantage.

We put a great amount of thought into every RV we design and build. From strong frames, to sturdy walls and insulation, we build every RV to take you on many adventures to come.

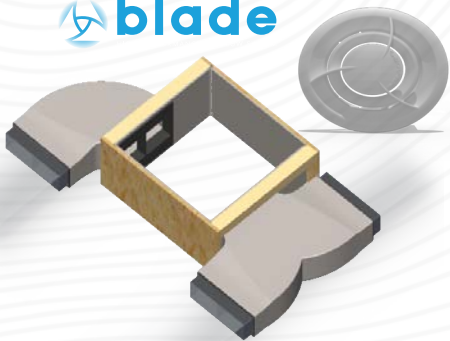
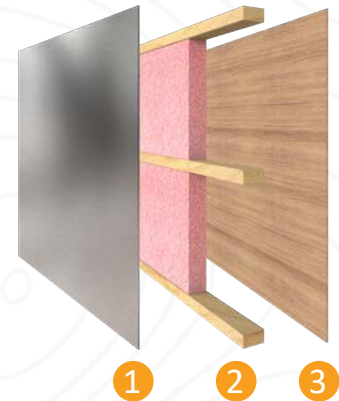


## Durable Roof Structure

- 1 TPO Roof
- 2 3/8" Decking
- 3 Fiberglass Insulation
- 4 Lauan Interior Panel

## Insulated Structure

- 1 Metal Exterior Panel
- 2 Wood Frame with R7 Thermal Insulation
- 3 Lauan Interior Panel



## Blade Air Flow System

This design reduces air turbulence and noise accelerating airflow with duct elbows and wyes that feature enlarged inlets and narrow as they push cooled air from the AC through the length of the ducting.

(On Ducted AC Models Only)



To see more features, visit [dutchmen.com](http://dutchmen.com)





## Make the DUTCHMEN® Connection.

Connect with other RVers in the Dutchmen community. Sharing adventures is a great way to get inspired and get on the road. Gather 'round our social media campfires with us—and be sure to follow us so we can share with you!

[dutchmen.com](http://dutchmen.com)



Visit us online to see all the Dutchmen brands, innovative models, and spacious floor plans.

CONTACT SALES: 574.537.0600

PO BOX 2000 | 2164 CARAGANA COURT | GOSHEN, IN 46527