

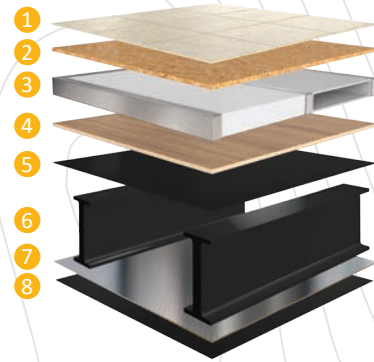


DUTCHMEN® CONSTRUCTION ADVANTAGE

We put a great amount of thought into every RV we design and build. From strong frames, to sturdy walls and insulation, we build every RV to take you on many adventures to come.

Main Floor Structure

- 1 Linoleum Flooring
- 2 Dynaspan Floor Decking
- 3 Aluminum Frame with Block Foam Insulation and Heat Duct
- 4 Lauan Panel
- 5 Darco Moisture Barrier
- 6 Steel Powder-Coated Main I-Beam Frame
- 7 Radiant Insulation
- 8 Fully Enclosed Underbelly

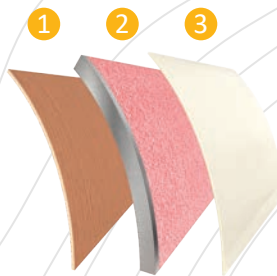


Laminated Walls

- 1 Gel Coat Fiberglass Exterior Panel
- 2 Lauan Wall Backing
- 3 Aluminum Frame with Block Foam Insulation
- 4 Interior Wall Panel

Insulated Reinforced Front Cap

- 1 Lauan Interior Panel
- 2 Aluminum Frame with Fiberglass Insulation
- 3 Fiberglass Front Cap



MORE STANDARD FEATURES MORE VALUE

Everything we put into our innovative floor plans are designed to maximize storage and comfort. We don't stop there, to ensure peace of mind after the purchase we have the industry's best RV warranty, 100% pre-delivery inspection, and the leader in parts and service. While other manufacturers offer features as options, we prefer to make those same features standard.

We've built a reputation for bringing RV owners more standard features for less money for over 25 years, and it's a reputation we plan to keep.



100% PRE-DELIVERY INSPECTION

At Dutchmen, quality is standard. Every single Dutchmen RV that comes off the line receives its own pre-delivery inspection. Every unit undergoes a thorough 253-point check to ensure accurate measurements, fully-functional electronics and components.



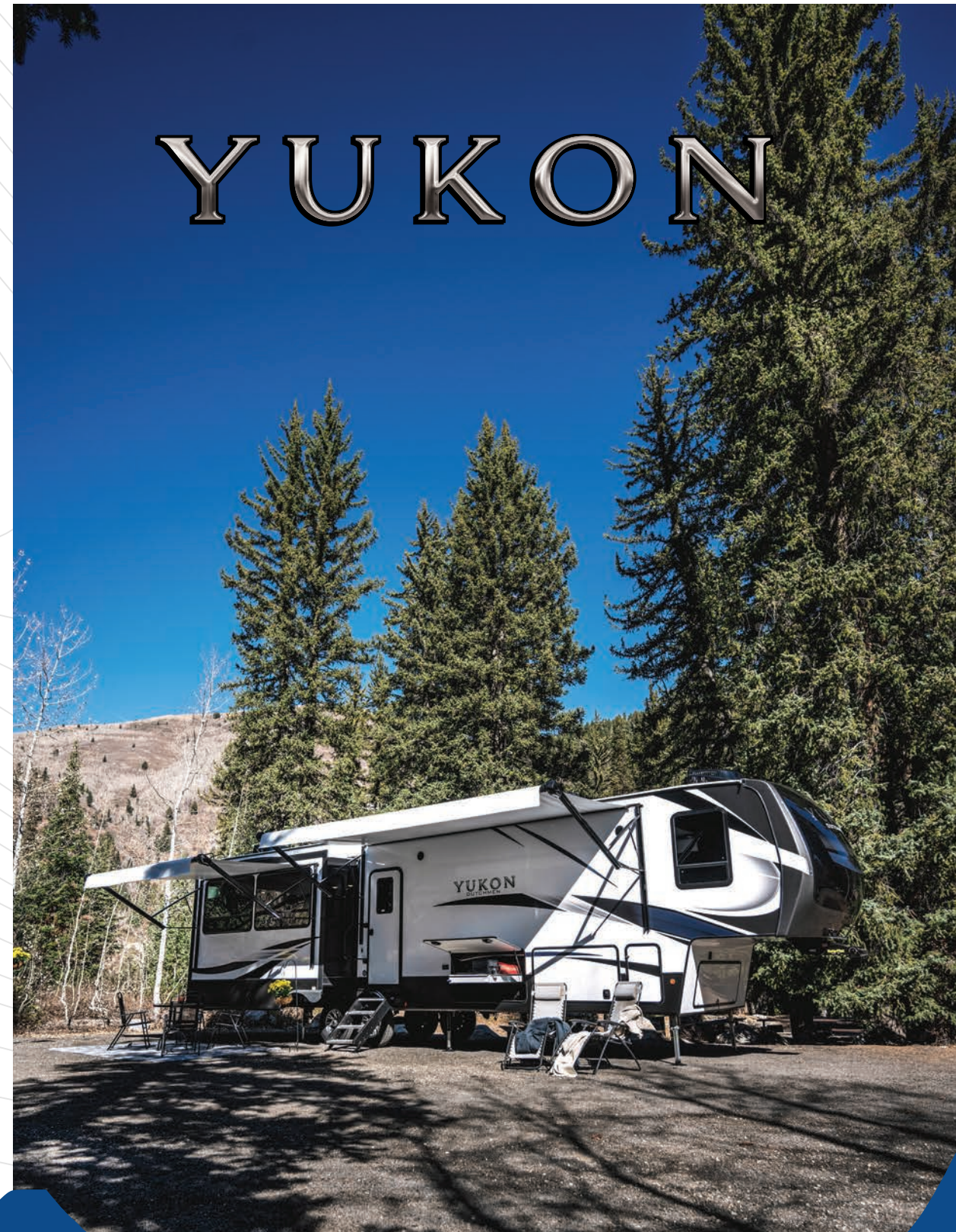
THE INDUSTRY'S BEST RV WARRANTY

With this industry-best warranty, we take the guessing game out of what is and isn't covered. So, that means you don't have to wrangle over the details, because we deliver value by clearly outlining the major components we back during the first three years.



THE LEADER IN PARTS AND SERVICE

Replacement parts. Routine checkups. Expert advice. You name it and we've got it covered. When only the best RV services will suffice, our industry-leading parts and service department is ready to help you get back on the road - and stay there longer than ever before.



YUKON

Luxury Fifth Wheel

Make anywhere you roam your territory.

Your Dealer

PO BOX 2000 | 2164 CARAGANA COURT | GOSHEN, IN 46527 | SALES 574.537.0600

www.dutchmen.com

Visit us online to see all the Dutchmen brands, innovative models and spacious floor plans.



Length is defined as the distance from the centerline of hitch pin/coupler to rear bumper of trailer. **Our weights represent how most units are built, inclusive of many commonly-ordered options. ***Fresh water capacity includes water heater capacity.

DISCLAIMER: Product information is as accurate as possible as of the date of brochure publication. All features, floor plans and specifications in this brochure are subject to change without notice. Please consult Dutchmen's website at www.Dutchmen.com for current product information and specifications. Tow Vehicle Disclaimer. CAUTION: Owners of Dutchmen recreational vehicles are solely responsible for the selection and proper use of tow vehicles. All customers should consult with a motor vehicle manufacturer or their dealer concerning the purchase and use of suitable tow vehicles for Dutchmen products. Dutchmen disclaims any liability or damages suffered as a result of the selection, operation, use or misuse of a tow vehicle. DUTCHMEN'S LIMITED WARRANTY DOES NOT COVER DAMAGE TO THE RECREATIONAL VEHICLE OR THE TOW VEHICLE AS A RESULT OF THE SELECTION, OPERATION, USE OR MISUSE OF THE TOW VEHICLE. REFERENCE DUTCHMEN MANUFACTURING OWNERS MANUAL FOR LIMITED WARRANTY DETAILS. © 2021 Dutchmen 10-13-21-Yukon-Printed in U.S.A



Dutchmen®

YUKON

Soul of the RV

Whether a weekend getaway or an extended season, the Yukon will renew your spirit. With more standard features and a focus on quality, value, and design, find your soul of the RV.

- **100" Wide Body Construction** - 4" EXTRA between sidewalls for DEEPER slides, MORE walk around room, and DEEPER cabinets for tons of storage.
- **Solid Entry Steps** - Aluminum steps deliver a sound platform for stability while easy to store away.
- **Massive Panoramic Windows** - Tinted windows provide scenic views and more natural light.
- **Cathedral Interior Roof Height** - Non-sloping roof line for more ceiling height in the main living area and allows for 7' "Teton Tall" slide outs.
- **All Weather Package** - Additional insulation with 12 volt tank pads.
- **78" Entry Door** - Maximum amount of headroom.
- **162 Gallons of Fresh Water** - 100 MORE gallons than the competition.
- **Options** - 18 cu. ft. residential refrigerator with ice maker or 18 cu. ft. gas/electric refrigerator, Third high efficiency AC, Solar Package with inverter.



YUKON 399ML
Length: 42' 5"
Weight: 13,768 lbs. Sleeps: 2-4
Hitch: 2,592 lbs. Height: 13' 4"



YUKON 400RL
Length: 42' 5"
Weight: 13,825 lbs. Sleeps: 2-4
Hitch: 2,440 lbs. Height: 13' 4"



YUKON 410RD
Length: 42' 5"
Weight: 14,166 lbs. Sleeps: 4-6
Hitch: 2,444 lbs. Height: 13' 4"



YUKON 421FL
Length: 45' 8"
Weight: 15,388 lbs. Sleeps: 4-6
Hitch: 3,220 lbs. Height: 13' 4"



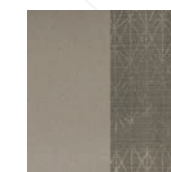
YUKON 400RL
Length: 42' 5"
Weight: 13,825 lbs. Sleeps: 2-4
Hitch: 2,440 lbs. Height: 13' 4"



INTERIOR FEATURES:

- Residential Insignia Oven w/4-Burner Cooktop
- Largest Countertop Space in the Industry
- 30" Residential Microwave
- Two 50" TV (Bedroom & Living Area)
- Two 40" Fireplace (Bedroom & Living Area)
- Electric Powered Theater Seating
- Ceiling Fan
- Tri-Fold Sofa in All Floor Plans
- Coffee Bar in Select Floor Plans
- King Bed Slide in All Floor plans
- Custom Wardrobe w/Massive Closet & 9 Drawers
- Largest & Most Distinguished Bathroom in the Industry
- Dual Vanity w/Vessel Bowl Sinks w/High Rise Faucets (NA 320RL)
- Washer/Dyer Prep
- Pull Out Laundry Hamper

INTERIOR DECORS



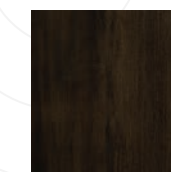
Linen



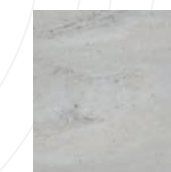
Macchiato



Flooring



Woodgrain



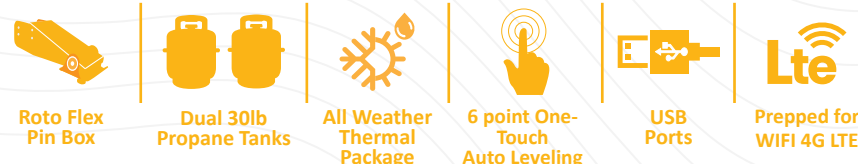
Countertop

EXTERIOR FEATURES:

- Upgraded RotaFlex Pin Box
- High Gloss Gel Coat Fiberglass
- MorRyde CRE 3000 Suspension
- MorRyde Secure Stance Entry Step
- Dual Pass Through Storage Compartments (NA 320RL)
- Pull Out Storage Tray on Every Floor Plan
- AlphaPly Roofing with Lifetime Warranty
- One Touch 6 Point Level-Up
- Dual Electric Awnings with LED Light Strip
- Tool Boxes Built into Skirting
- 3,000lbs Tow Hitch
- 2 High Efficiency AC's
- 12 Gallon Gas/Electric Water Heater
- Roof Ladder Standard
- Back Up Camera Prep
- Fully Painted Front Cap
- Insulated Slam Latch Baggage Doors



Standard Features In Every Floor Plan



*All information & specifications are for units manufactured after 04/15/2021

To learn more visit our website dutchmen.com