

WARRANTY FOR
FULL TIME RVING*

*REFERENCE KEYSTONE RV COMPANY OWNERS MANUAL FOR LIMITED WARRANTY DETAILS

LUXURY FIFTH WHEELS

keystonerv.com/montana

MONTANA

MODERN MAPLE EDITION



**Keystone RV
Company**

The ultimate
ownership experience.

The ultimate ownership experience.

The goal of Keystone RV Company is to surprise and delight our owners at each and every touchpoint. We're happy when our campers are happy, and we are committed to providing the very best ownership experience in the industry.



**Keystone RV
Company**

1 EASIER SHOPPING.

At Keystone, we make choosing an RV as easy as finding the Big Dipper on a dark summer night. With comprehensive online product information, Key Connect™ product advisors, and an unparalleled dealer network, we will help you select the perfect RV for your family's adventure.

2 INNOVATIVE THINKING.

The road's a nicer place when you have the industry's smartest features behind you. Keystone leads the pack in patented innovations that make our RVs safer, more comfortable, and easier to operate.

3 LONG HAUL QUALITY.

To keep you on the road, there are certain things we just won't build a Keystone RV without. Game-changing features like our Unified Wiring Standard, Tru-Fit™ five-point slide construction, and no-fail Tuf-Lok™ A/C duct joiners combined with exhaustive testing and inspections are some of the reasons why Keystone is able to offer our owners the industry's best 3-year limited structural warranty.

4 WORRY-FREE CUSTOMER SERVICE.

Wherever the road takes you, you're never too far from an authorized Keystone service center. We also offer live service assistance, ultra-fast parts shipping, online maintenance tips and tricks, and a single-point warranty claims policy. *That's* peace of mind.

5 KEYSTONE NATION.

When you choose Keystone, you become a part of one of the largest camping families in the country. We're Keystone Nation. A friendly community where people share photos, travel tips and amazing stories – all in the spirit of camaraderie and adventure. Come join us.

Experience the Montana lifestyle by visiting [#keystonemontana](#)



MONTANA

ENJOY WHAT YOU DESERVE



LUXURY FIFTH WHEELS

Expert craftsmanship that leaves a lasting impression

There is a time in your life when you know your next RV will be a Keystone Montana. You're an experienced camper. You know the ropes. You have the freedom to spend more time on the road and you are ready to see more of the country. You are ready to join more than 100,000 owners who have chosen Montana for its spacious floorplans, exceptional craftsmanship, cutting-edge technology, and the confidence that comes from twenty one years of building durable and dependable luxury fifth wheels.



ONE OF THE MOST-AWARDED BRANDS IN THE INDUSTRY

Keystone EXCLUSIVE Innovations

Year after year, Keystone RV's experienced team delivers Built For the Long Haul quality you expect and exclusive innovations you won't find anywhere else.



4G LTE and Wi-Fi Prep

All units are equipped with a new antenna that integrates 4G LTE and Wi-Fi with standard VHF/UHF/AM/FM reception.



3-year Limited Structural Warranty, 1-year Limited Base Warranty

Every new Keystone RV comes with the industry's best three-year limited structural warranty AND a one-year limited base warranty. Ask your dealer, visit keystonerv.com, or call Keystone owner relations for details.



KeyTV™

No more connection guesswork or poor reception. KeyTV offers a game-changing, single point of control of over-the-air, cable, and satellite feeds. Visit us online for more information.



Color-Coded Wiring

Easy-to-trace circuits simplify electrical and entertainment system troubleshooting.



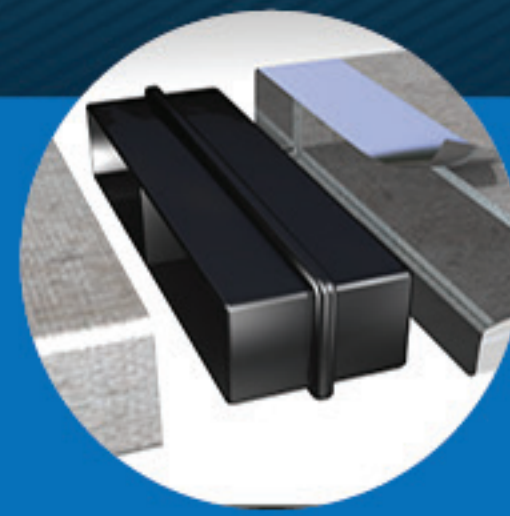
Automotive-Grade Painted Fiberglass Cap

Six layers of stunning and resilient automotive-grade paint with Key-Shield™ paint technology.



In-Floor Heating Ducts

Ducting allows for more airflow that distributes heat evenly for optimal comfort.



Tuf-Lok™ A/C Duct Joiners

Crush resistant design securely joins ductwork and A/C units, and drastically reduces chilled-air leaks to boost cooling efficiency and comfort.



Tru-Fit™ Slide Construction

A more durable slide room design that minimizes functional motor and structural stress, and resists leaking.



INTERIOR DÉCOR OPTION: COTTAGE WHITE

This charming two-toned interior feels light and clean while providing an enduring and versatile look you will delight in for years to come.

*Cottage White hand glazed cabinetry is exclusively offered with Bourbon furniture.



INTERIOR DÉCOR OPTION: BOURBON

Elegant, smooth, and refined, Bourbon décor is a classic choice. The rich brown tones of this furniture add a splash of depth to the Modern Maple cabinetry and refreshing light floor treatments.

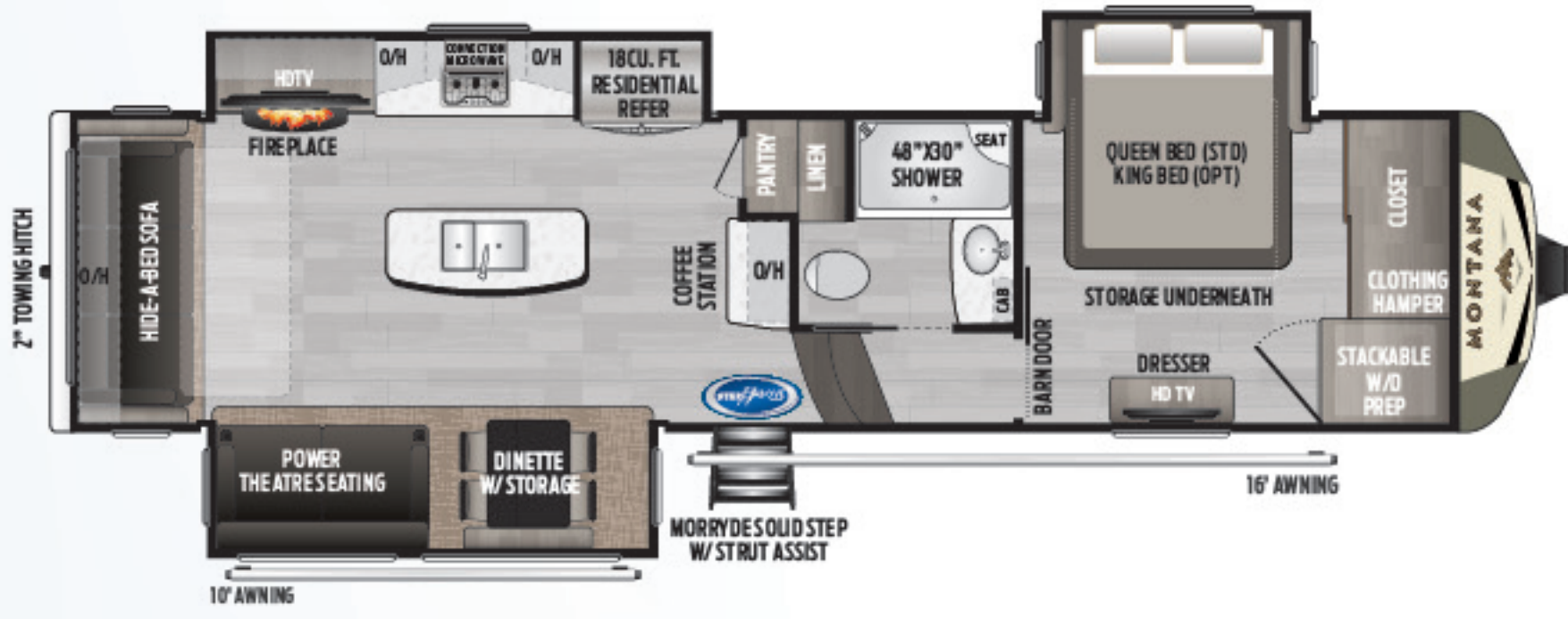




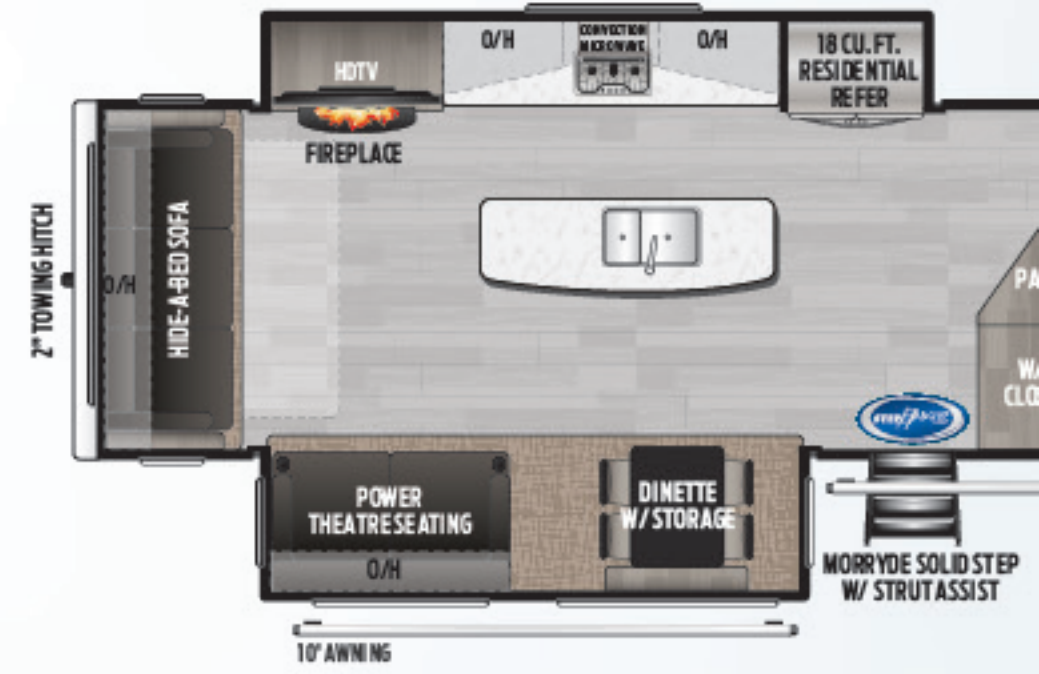
INTERIOR DÉCOR OPTION: **CHAMPAGNE**

Enjoy this bubbly twist on Montana décor with pale beige furniture accenting the new light and bright interior of the Modern Maple Edition. Champagne furniture offers a sophisticated element worth celebrating.

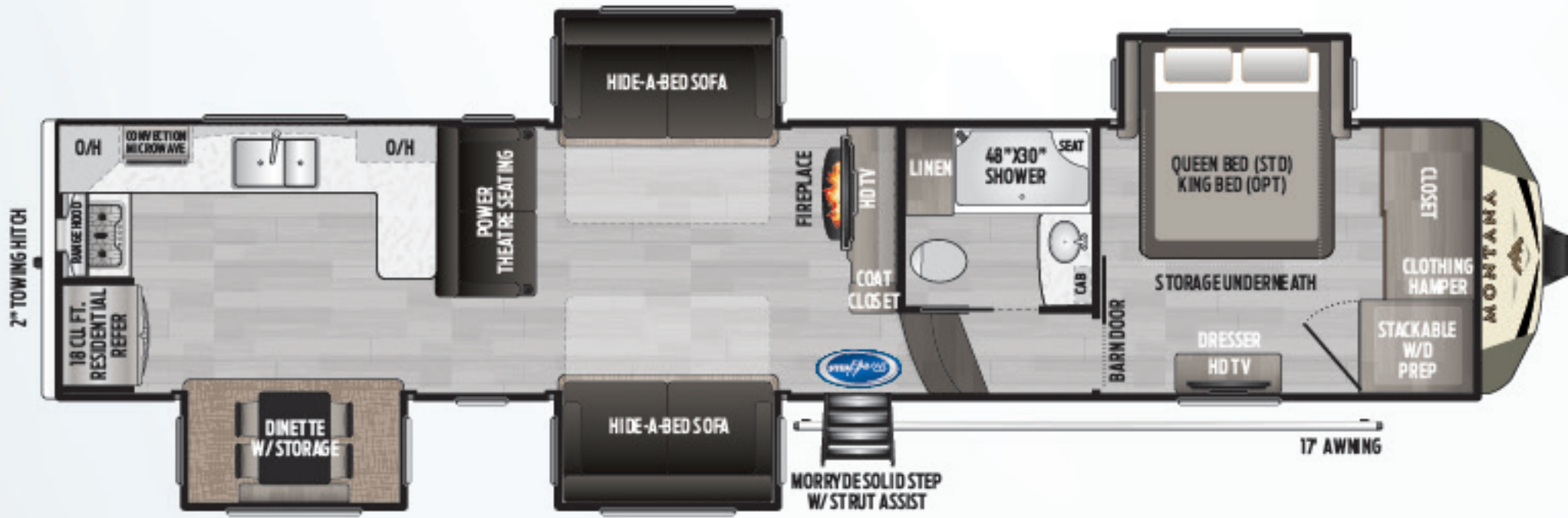




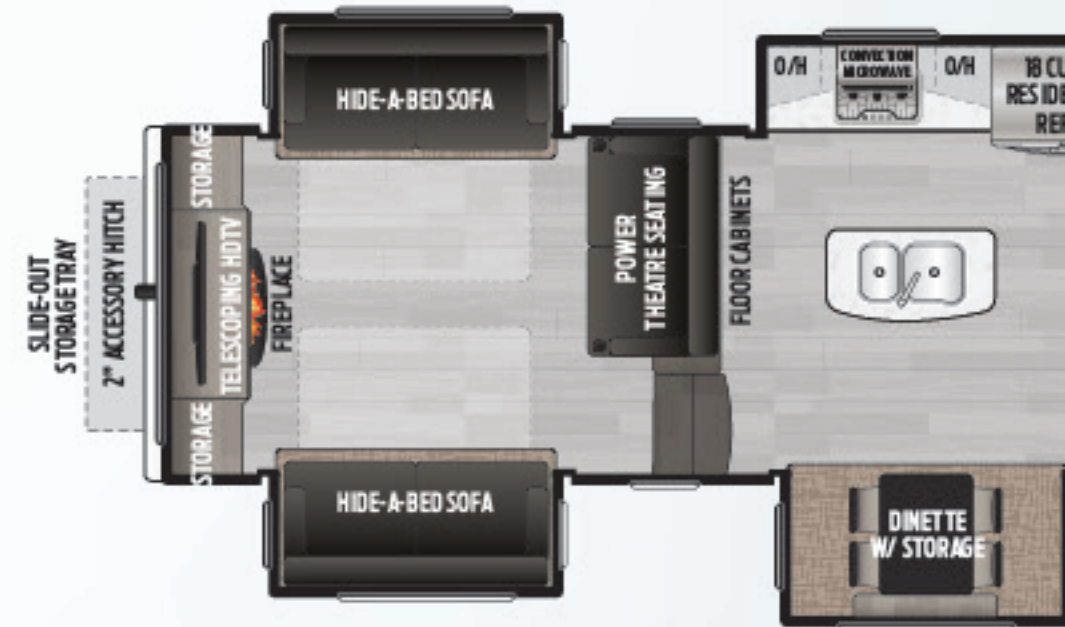
3120/3121RL | REAR LIVING ROOM, THREE SLIDES | Weight: 11999 LBS. | Length: 35' 0"
RV REFRIGERATOR RES. REFRIGERATOR



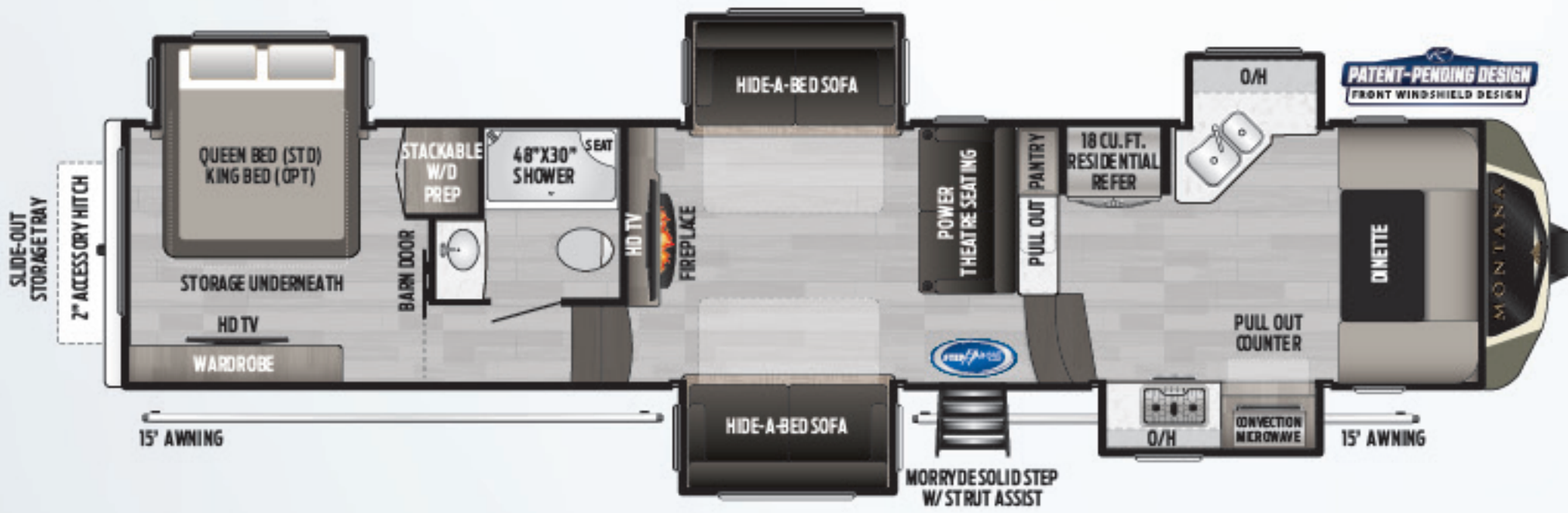
NEW! **3780/3781RL** | REAR LIVING W/ DOUBLE W...
RV REFRIGERATOR RES. REFRIGERATOR



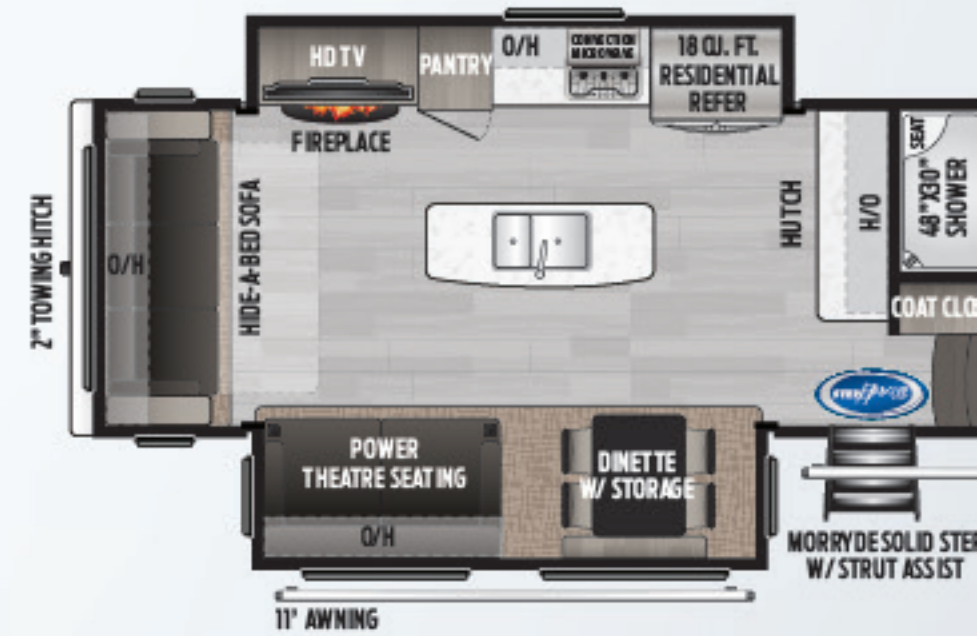
3700/3701LK | LUXURY REAR KITCHEN, FOUR SLIDES | Weight: 13126 LBS. | Length: 40' 6"
RV REFRIGERATOR RES. REFRIGERATOR



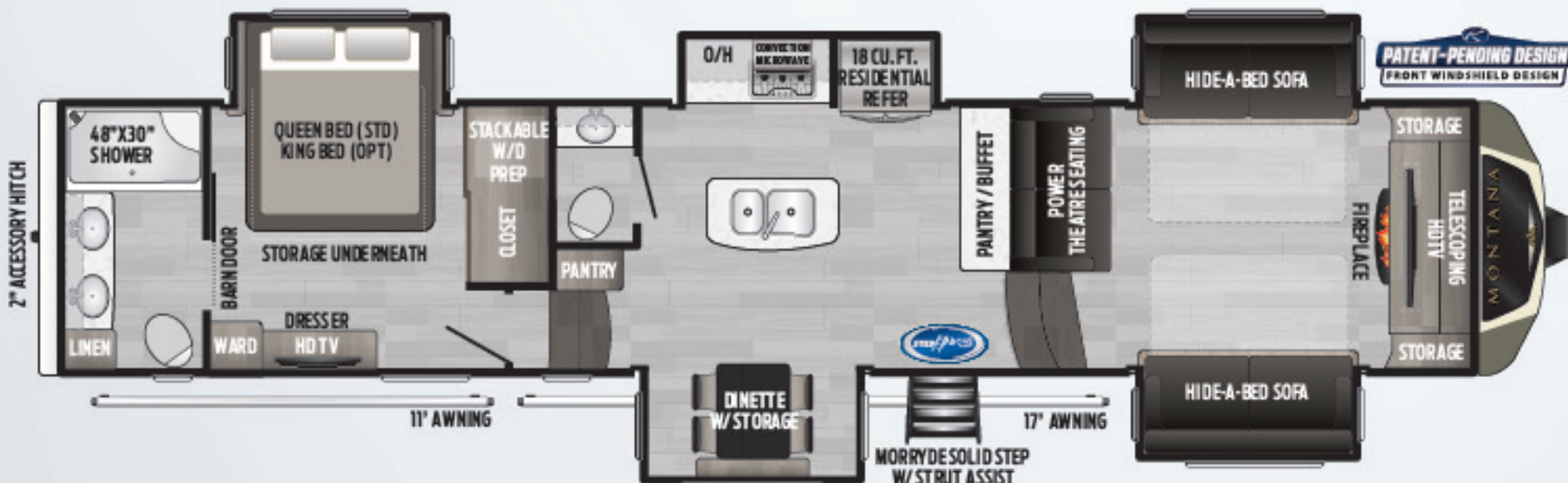
3790/3791RD | ELEVATED REAR DEN W...
RV REFRIGERATOR RES. REFRIGERATOR



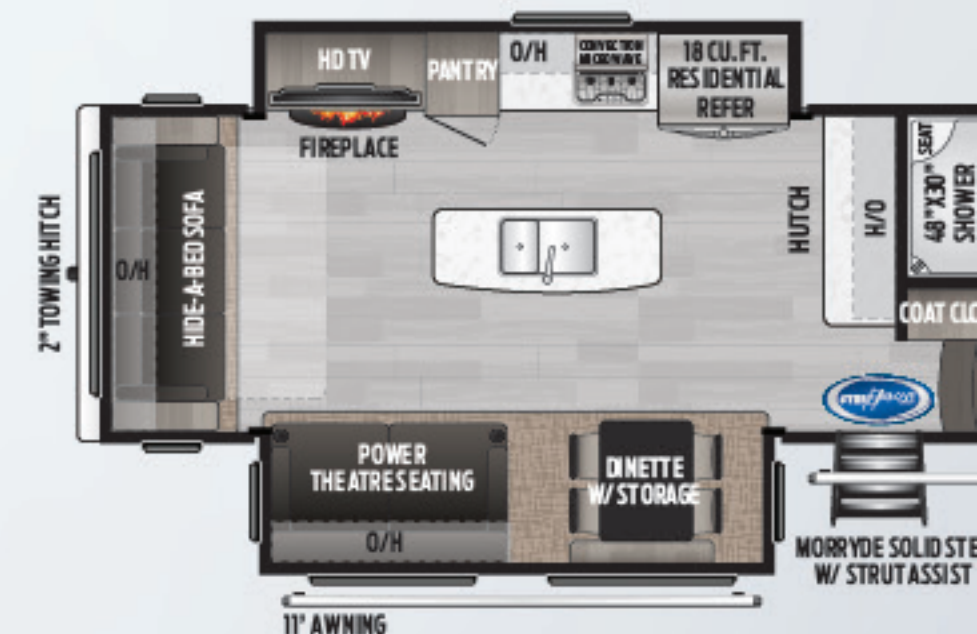
3740/3741FK | FRONT KITCHEN, RAISED REAR BEDROOM | Weight: 13755 LBS. | Length: 40' 2"
RV REFRIGERATOR RES. REFRIGERATOR



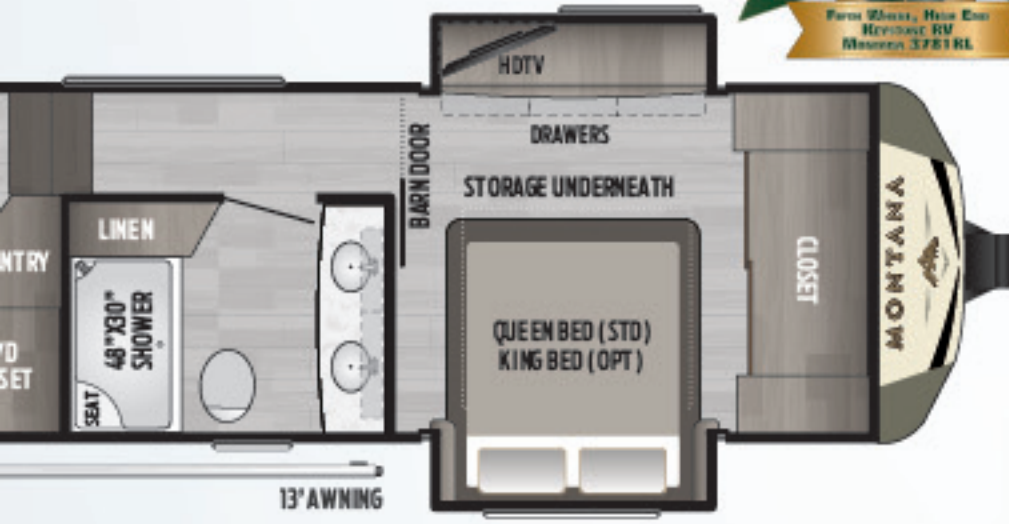
3810/3811MS | REAR LIVING ROOM W/ MASTER S...
RV REFRIGERATOR RES. REFRIGERATOR



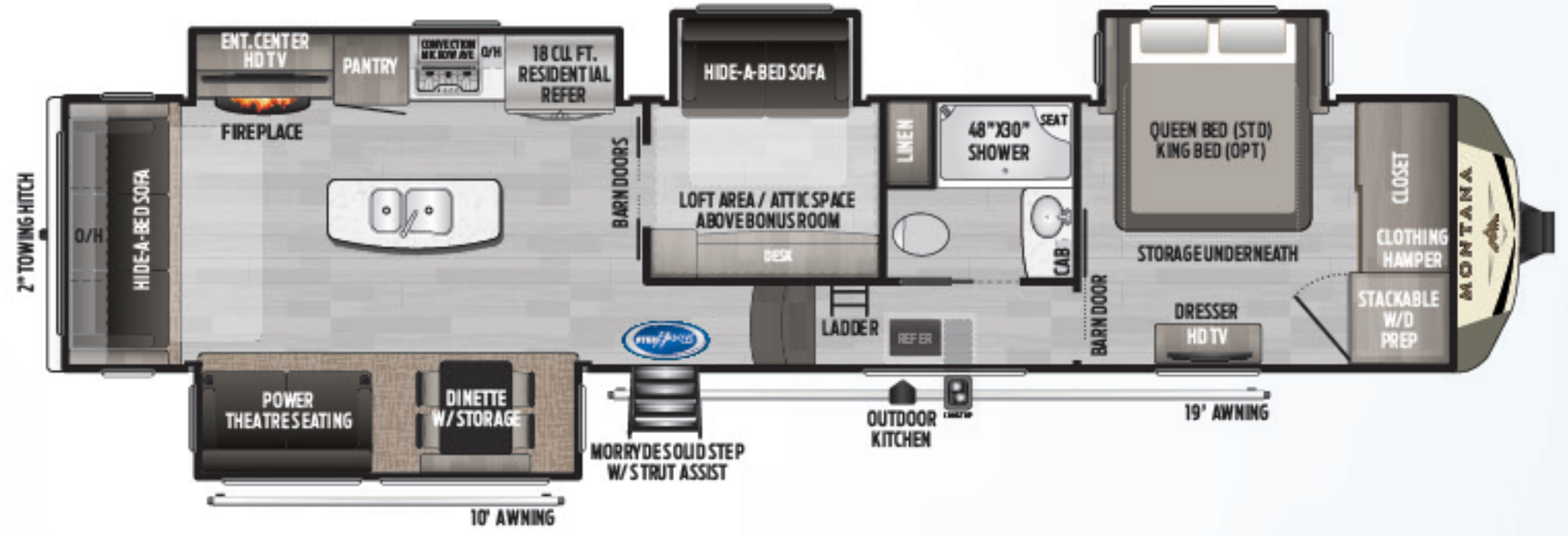
3760/3761FL | FRONT LIVING W/ FULL BATH AND A HALF | Weight: 14147 LBS. | Length: 41' 0"
RV REFRIGERATOR RES. REFRIGERATOR



NEW! **3812/3813MS** | REAR LIVING RO...
RV REFRIGERATOR RES. REFRIGERATOR

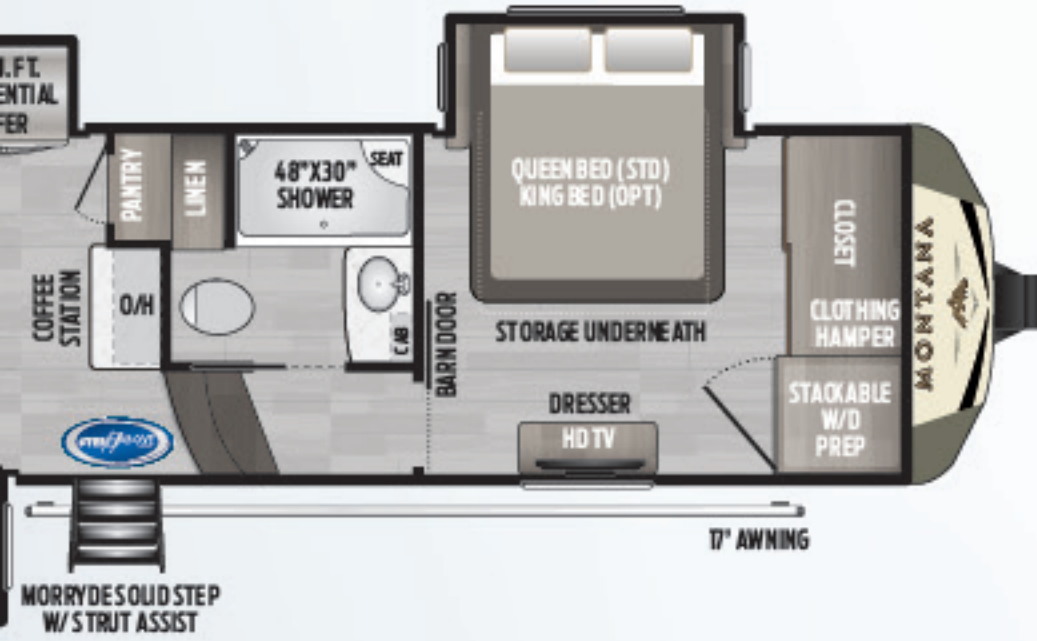


COMMUNITY BATHROOM & DOUBLE SLIDE BEDROOM | Weight: 13490 LBS. | Length: 41' 0"

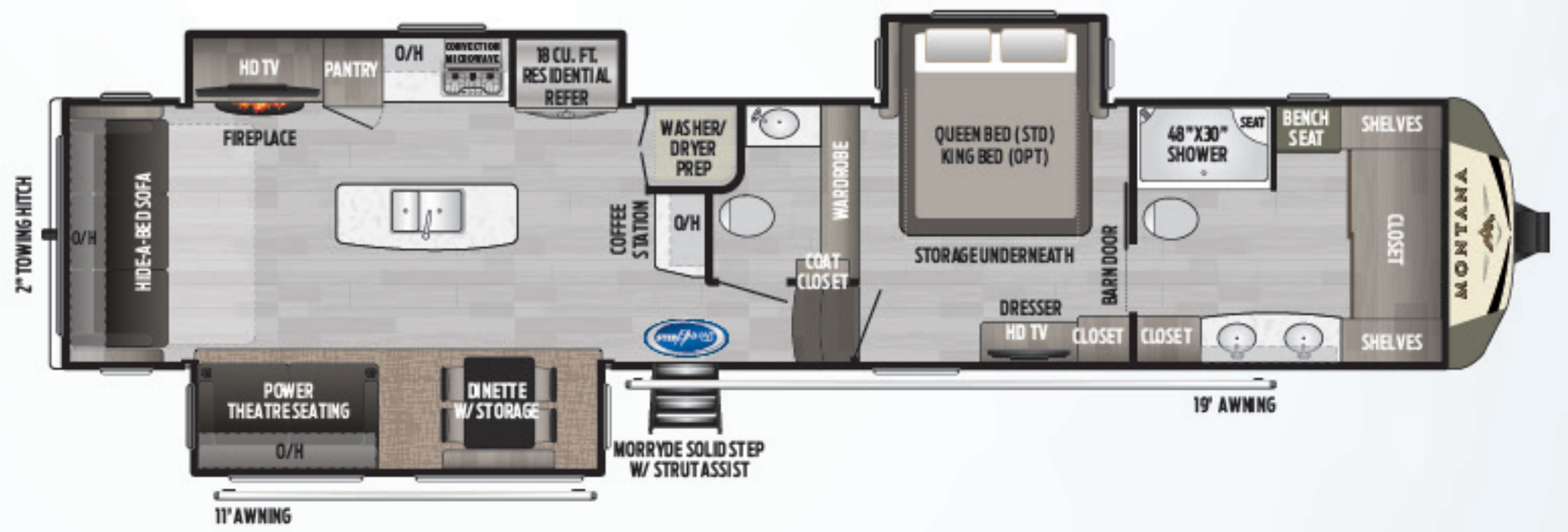


3854/3855BR
RV REFRIGERATOR RES. REFRIGERATOR

BONUS ROOM W/ LOFT AND OUTSIDE KITCHEN | Weight: 13644 LBS. | Length: 40' 10"

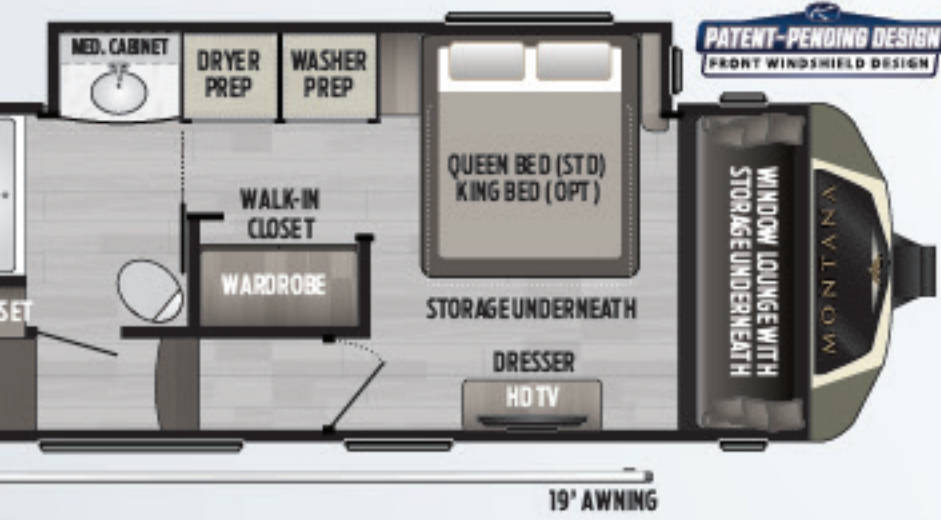


REAR PULL-OUT STORAGE | Weight: 14119 LBS. | Length: 40' 4"

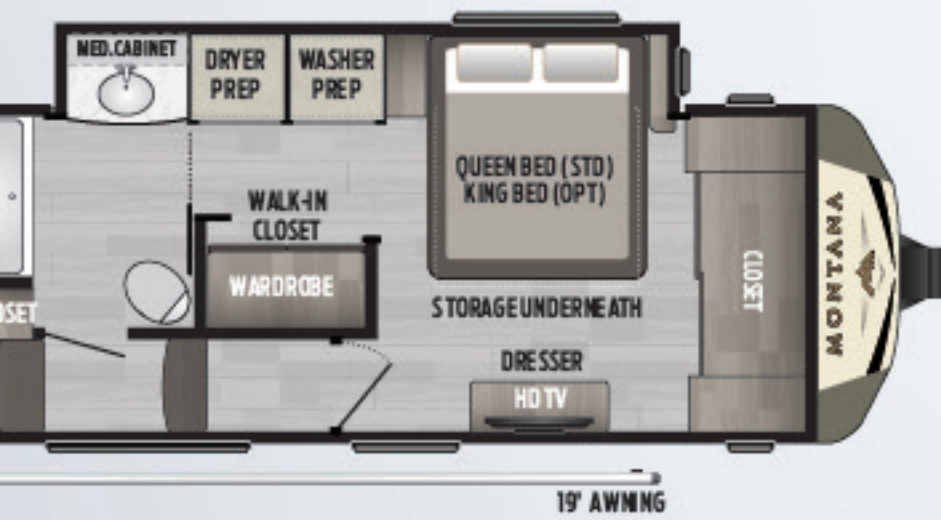


3930/3931FB
RV REFRIGERATOR RES. REFRIGERATOR

FRONT BATHROOM W/ FRONT WARDROBE | Weight: 13564 LBS. | Length: 41' 4"



WALK-IN CLOSET | Weight: 13595 LBS. | Length: 40' 9"



WALK-IN CLOSET | Weight: 13635 LBS. | Length: 40' 9"

#1 SELLING LUXURY FIFTH WHEEL BRAND
19 YEARS IN A ROW.



more product detail at
www.keystonerv.com/montana



Solid Hardwood Cabinet Stiles

Lasting elegance that won't peel or fade.



Woven Flooring with Residential Baseboards in Slideout

This highly durable marine-grade flooring eliminates carpet and makes cleaning a breeze.



Easy Sweep Resilient Flooring

Keep your RV tidy with durable vinyl flooring in the bedroom.



Indoor/Outdoor Central Vacuum

Clean up your coach in a snap with this convenient tool.



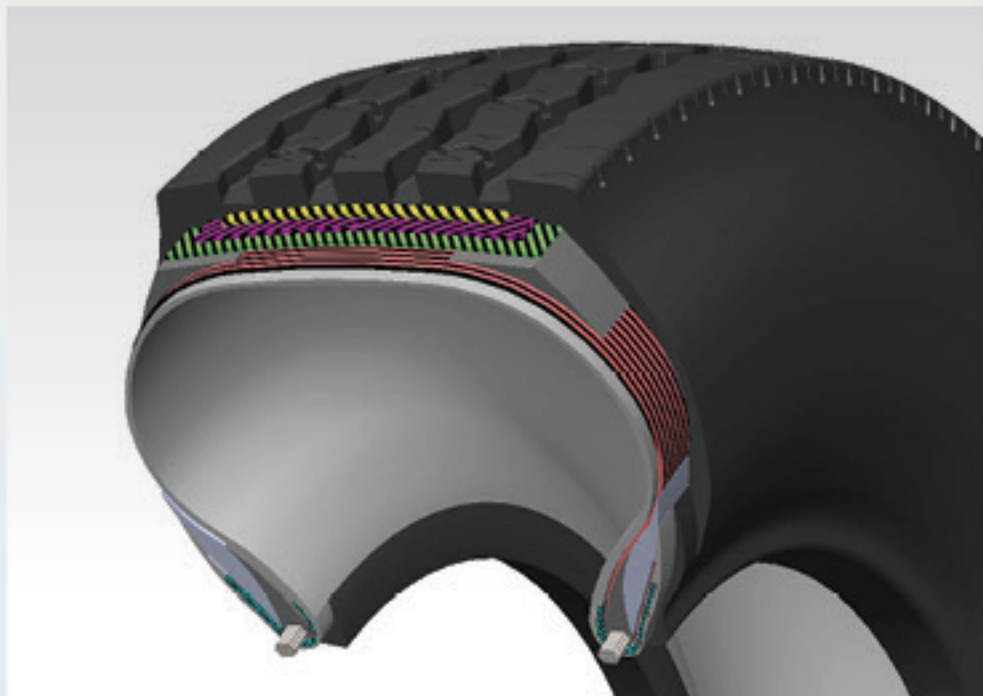
Day/Night Roller Shades

Dual shades allow you to control light and privacy levels at any time.



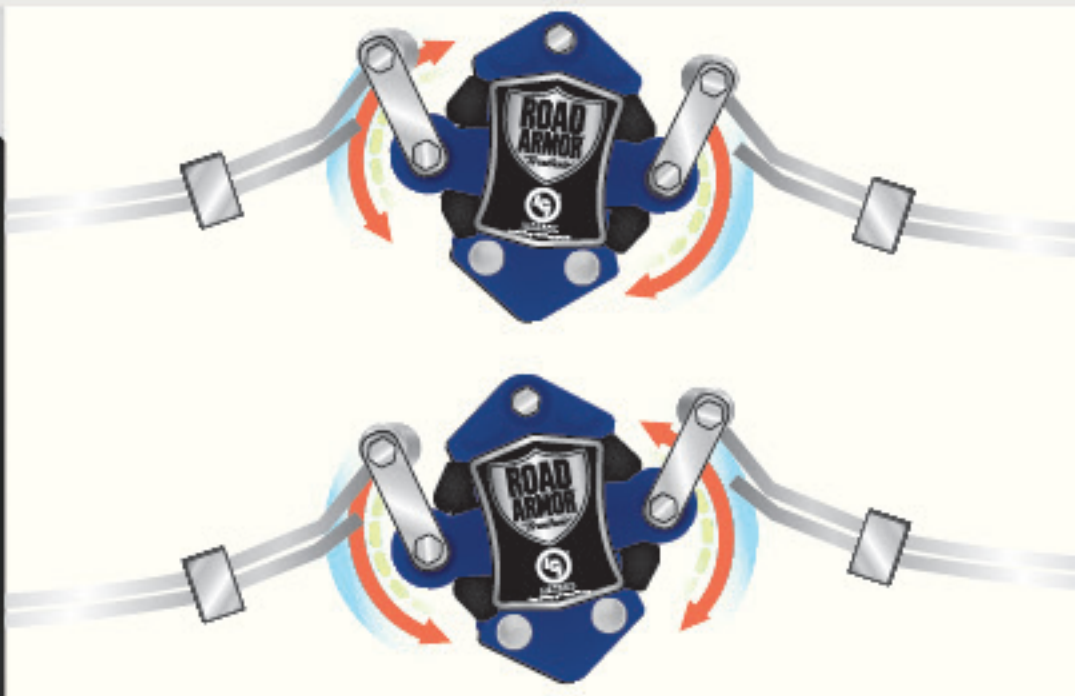
2" Towing Hitch N/A 3740/3741, 3760/3761, 3790/3791

Allows you to tow your watercraft behind your RV (up to 3,000 lb).



Sailun G-Rated Tires W/ 6-Year Warranty

Premium higher ply tires safely allow higher driving speeds and carrying capacity.



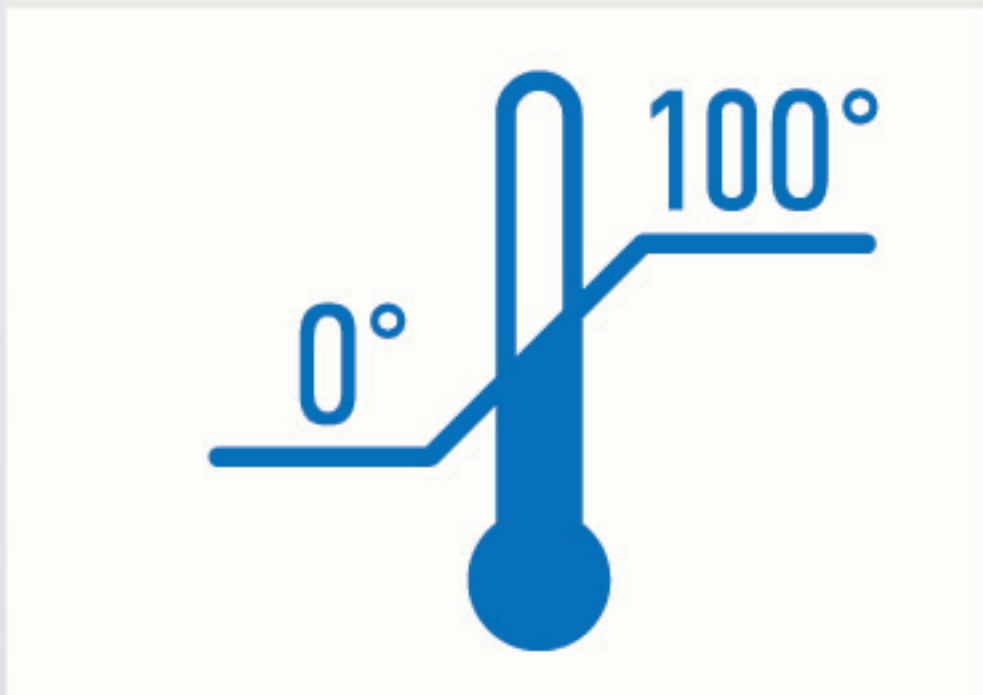
EXCLUSIVE Road Armor™ Suspension W/ 360° Vibration Control

Equalizes axle load to dampen shock and vibration.



Wet Bolts

Greasable wet bolts reduce friction and improve the life of your suspension system.



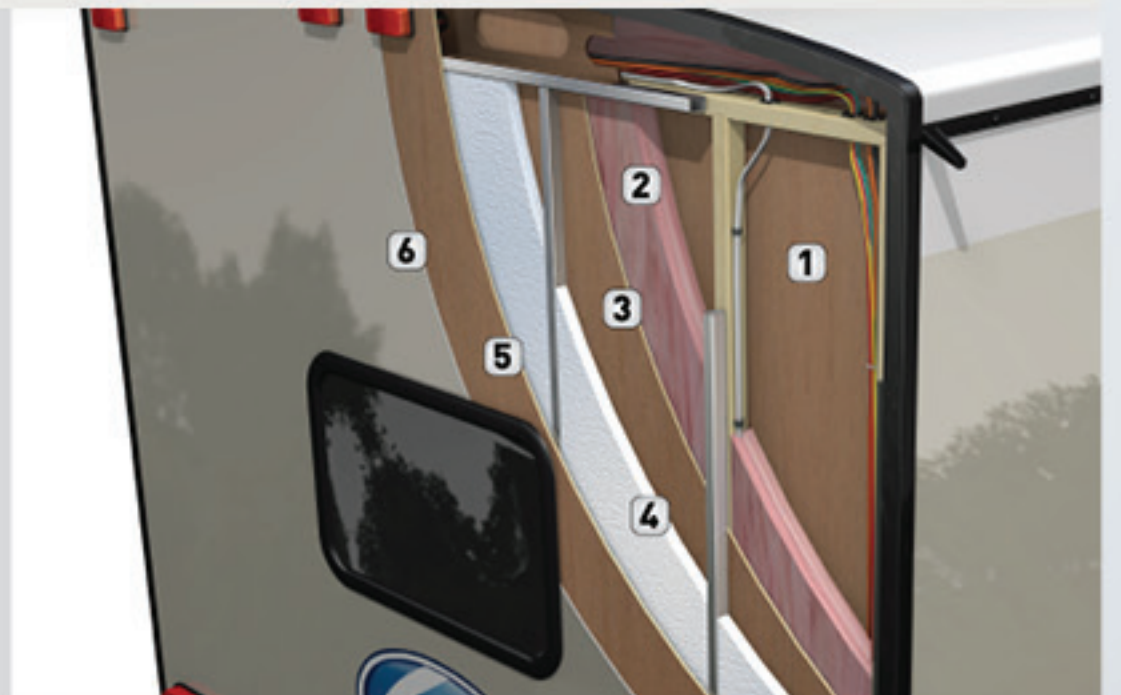
Four Season Camping

Water lines and tanks protected to keep you camping down to 0°F.



30K BTU A/C w/ Quiet Cool & Heat Pump

1/3 the noise of traditional A/C systems and the ability to warm your trailer without turning on your furnace.



Double-Insulated Laminated Rear Wall (Non Legacy)

A Montana EXCLUSIVE and the best insulated rear wall in the industry.



Benefits of Solar Power

No more dead batteries. Solar charging minimizes the need to plug into shore power to recharge and maintain batteries while increasing battery life. Solar power is quieter, cleaner and more sustainable than traditional RV generators. A solar power system can quickly pay for itself by eliminating the ongoing fuel and maintenance costs associated with generators.

Montana's optional Solar Flex systems take solar to the next level with Maximum Power Point Tracking (MPPT) controllers and Pure Sine Wave inverters. MPPT controllers prevent battery overcharging and protect against battery drainage while optimizing the conversion of solar energy into the best voltage for conventional deep cycle or lithium batteries. Pure sine wave inverters turn the low-wattage DC power produced by the solar panels and stored in the batteries into AC power, which is the type of power used by most appliances. Montana owners can use inverted outlets to run small appliances like a TV, coffee maker, blender, hair dryer or CPAP machine.

Optional Solar Flex System

- Grid Style 265 watt solar panel
- 30 amp MPPT controller
- 2000 watt inverter with 5 inverted electrical outlets: bedroom, refrigerator, kitchen, living area TV and theater seating

Optional Super Solar Flex System

- (4) Grid style 265 watt solar panels (1,060 watts total)
- 60 amp MPPT controller
- (2) 250 amp hour Dragonfly Energy LiFePO4 battery bank (500 amp hour total)
- 225 amp Precision Circuits battery guard
- 3000 watt hybrid inverter with every electrical outlet inverted
- 50 amp Precision Circuits energy management system
- (2) 15,000 BTU Power Saver air conditioners with soft start

Montana Legacy Package

Take your Montana to the next level with these premium upgrades



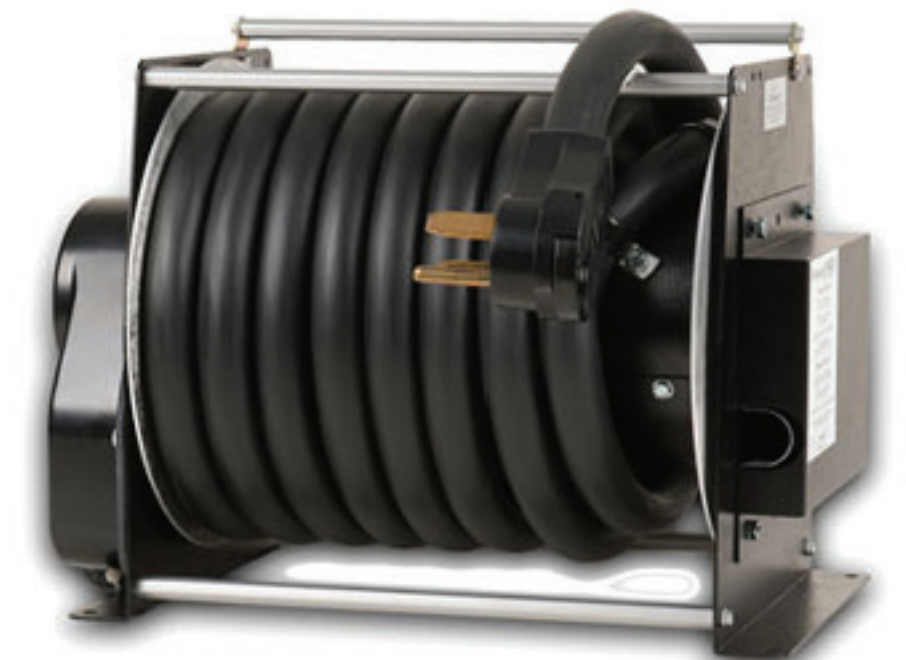
E/H Disc Braking

Add the ultimate in safety and stopping power to your Montana with the proven performance of electric over hydraulic disk brakes.



Furrion® Vision S™ Observation System

Side and rear-view cameras for ultimate safety and peace-of-mind when changing lanes, merging, and making wide turns.



Electric Power Cord Reel (N/A in 3130RE)

Quick and tidy storage for your power cord.



Surge Protection

Protects electronics without the need for additional equipment.



Generator Prep

Fully integrated wiring and controls to help you to get off the grid and give you more campsite options.



Rear Fiberglass Cap

(N/A 3700, 3701, 3740, 3741, 3760, 3761, 3790, 3791)
One-piece cap completely seals the roof, wall and floor.



CONTROL • SYSTEMS MONITORING • SAFETY

iN-Command™ Generation 3 w/ Global Connect

Total control over power, slide rooms, awnings and more from a convenient master control panel as well as your smartphone.



Make A Statement with Custom Full-Body Paint

Fade and peel-resistant automotive-grade paint available on Montana Legacy Edition coaches.



(3) COLOR OPTIONS

1

CASHMERE

2

COBALT

3

STERLING



Optional Outdoor Kitchen

Campsite entertainment at its finest
N/A 3740/3741, 3760/3761, 3854/3855

Transform your Montana with an optional outdoor kitchen that boasts two refrigerators, a stove top, utensil storage, and roomy counter space for food prep, bar or buffet. When the party's over, the entire kitchen easily tucks back into your pass-through storage.



MODEL	WEIGHT	CARRYING CAPACITY	HITCH WEIGHT	FRESH WATER	WASTE WATER	GRAY WATER	LPG	LENGTH*	HEIGHT
3120RL	12056	3944	2280	66	49	88	60	35' 0"	13' 5"
3121RL	11999	4351	2350	66	49	88	60	35' 0"	13' 5"
3700LK	13188	3212	2440	66	49	88	60	40' 6"	13' 5"
3701LK	13126	3274	2510	66	49	88	60	40' 6"	13' 5"
3740FK	13755	2745	2560	66	39	78	60	40' 2"	13' 5"
3741FK	13755	2745	2560	66	39	78	60	40' 2"	13' 5"
3760FL	14147	2653	2880	66	88	88	60	41' 0"	13' 5"
3761FL	14147	2653	2880	66	88	88	60	41' 0"	13' 5"
3780RL	13490	3110	2695	66	49	88	60	41' 0"	13' 5"
3781RL	13490	3110	2695	66	49	88	60	41' 0"	13' 5"
3790RD	14119	2481	2600	66	49	88	60	40' 4"	13' 5"
3791RD	14119	2481	2620	66	49	88	60	40' 4"	13' 5"
3810MS	13570	3180	2745	66	49	88	60	40' 9"	13' 5"
3811MS	13595	3155	2780	66	49	88	60	40' 9"	13' 5"
3812MS	13635	3165	2820	66	49	88	60	40' 9"	13' 5"
3813MS	13635	3165	2820	66	49	88	60	40' 9"	13' 5"
3854BR	13576	3324	2940	66	49	88	60	40' 10"	13' 5"
3855BR	13644	3256	2940	66	49	88	60	40' 10"	13' 5"
3930FB	13564	2936	2550	66	88	88	60	41' 4"	13' 5"
3931FB	13542	2958	2530	66	88	88	60	41' 4"	13' 5"

DISCLAIMER: Product information is as accurate as possible as of the date of publication of this brochure. All features, floor plans, and specifications in this brochure are subject to change without notice. Please also consult Keystone's web site at www.keystonerv.com for more current product information and specifications. **Tow Vehicle Disclaimer.** CAUTION: Owners of Keystone recreational vehicles are solely responsible for the selection and proper use of tow vehicles. All customers should consult with a motor vehicle manufacturer or their dealer concerning the purchase and use of suitable tow vehicles for Keystone products. Keystone disclaims any liability or damages suffered as a result of the selection, operation, use or misuse of a tow vehicle. **KEYSTONE'S LIMITED WARRANTY DOES NOT COVER DAMAGE TO THE RECREATIONAL VEHICLE OR THE TOW VEHICLE AS A RESULT OF THE SELECTION, OPERATION, USE OR MISUSE OF THE TOW VEHICLE.** *Length is defined as the distance from the centerline of hitch pin/coupler to rear bumper of trailer. Please review owner's manual prior to purchase for more information on service warranties, extended use, towing and maintenance. Owner's manuals can be found at keystonerv.com.

LIVING AREA FEATURES

Thomas Payne Collection® theater seating with electric recliners, massage and seat warmers (Modern Maple Edition)

Thomas Payne Collection® tri fold hide-a-bed sofa(s) (Modern Maple Edition)

Backlit crown molding (Modern Maple Edition)

Craftsman style slide-out fascia (Modern Maple Edition)

Handcrafted window valance center blocks (Modern Maple Edition)

Woven midnight roller shades with reflective back side and solar screen day shades (Modern Maple Edition)

Brunswick Shale wallboard (Modern Maple Edition)

Travertine illusion ceiling (Modern Maple Edition)

Residential baseboards (Modern Maple Edition)

Boulder Shadow vinyl flooring by Congoleum® (Modern Maple Edition)

Sensations PVC woven flooring by Syntec® (Modern Maple Edition)

Brushed nickel heat vents (Modern Maple Edition)

Living room privacy curtain: 3760/3761FL, 3790/3791RD (Modern Maple Edition)

LED dimmer switches in select areas (Modern Maple Edition)

Flush-mounted LED interior lights

LED motion sensor light at steps

KITCHEN FEATURES

Modern Maple cabinetry with hand wiped glazing (Modern Maple Edition)

Hidden cabinet hinges

Modern Maple hardwood cabinet framing (Modern Maple Edition)

Double Diamond decorative glass (Modern Maple Edition)

Modern Maple hardwood kitchen island panels with backlit double diamond glass inserts (Modern Maple Edition)

Modern subway backsplash (Modern Maple Edition)

35" x 12" or 48" x 12" kitchen window behind cook top (Modern Maple Edition)

MJ Finishing wall-mounted, free standing dinette with flip leaf (Not available 3740/3741FK) (Modern Maple Edition)

Two (2) fixed and two (2) folding dinette chairs (Not available 3740/3741FK)

Chair Buddy to secure dinette chairs (Not Available 3740/3741FK)

Pop-up electrical and USB outlets tower in free standing dinette buffet cabinet (Not available 3740/3741FK)

18 cu. ft. 4-door RV refrigerator (3120RL, 3700LK, 3740FK, 3760FL, 3780RL, 3790RD, 3810MS, 3812MS, 3854BR, 3930FB)

French door residential refrigerator with ice maker and 1000 watt inverter (3121RL, 3701LK, 3741FK, 3761FL, 3781RL, 3791RD, 3811MS, 3813MS, 3855BR, 3931FB)

Full extension drawer guides

Pull out kitchen trash can (select models)

Solid surface kitchen countertops (Residential Living Package)

Solid surface flush-mount sink covers (Residential Living Package)

Sink cover storage below kitchen sink (Residential Living Package)

Pop-up electrical and USB outlets tower in kitchen countertop

Motion sensor LED lighting below kitchen sink

LED accent lighting below kitchen countertops

Motion sensor LED light in pantry (select models)

Deep 60/40 stainless steel sink (Residential Living Package)

High-rise faucet with integrated pull out sprayer (Residential Living Package)

30" over-the-range convection/microwave oven (Residential Living Package)

Furrion® RV Chef Collection 9000 BTU oven with auto-ignite (Residential Living Package)

Furrion® RV Chef Collection cooktop (Residential Living Package)

Central vacuum with interior and exterior ports plus toe kick sweep (Residential Living Package)

Power vent fan with rain sensor (Four Season Living Package)

HOME ENTERTAINMENT

Jensen® DVD/CD/MP3 entertainment system with Bluetooth

Marine grade exterior speakers

EXCLUSIVE KeyTV satellite prep (Residential Living Package)

Omnidirectional rooftop antenna with 4G LTE / Wi-Fi Prep (Residential Living Package)

Jensen® 50" HD LED TV in living area (Residential Living Package)

Jensen® 32" HD LED TV in bedroom (Residential Living Package)

BEDROOM FEATURES

Vista Stone bedspread and pillows (Modern Maple Edition)

3 Square Ombre Black headboard (Modern Maple Edition)
48" x 12" bedroom window above headboard (Modern Maple Edition)
Renovo Sleep™ memory foam mattress with Feran Ice cover (Modern Maple Edition)
60" x 80" Queen Bed
Reading lights over bed
Massive storage under bed
Wood TV cabinet
Two (2) bedside electrical outlets (Residential Living Package)
Bedside night stands (Residential Living Package)
Prepped for combo or stackable washer/dryer with separate 20 amp circuits for each appliance (Residential Living Package)
Barn door with magnetic latch
Motion sensor LED light in bedroom closet
Laundry hamper (select models)
Six drawer extra capacity dresser
Folding dinette chair storage in washer / dryer closet

BATHROOM FEATURES

Sandstone natural molded bathroom vanity top with stainless steel sink (Modern Maple Edition)
Dometic 310 ceramic toilet with PowerFlush technology (Modern Maple Edition)
Sliding bathroom door: 3120/3121RL, 3700/3701LK, 3790/3791RD, 3854/3855BR
Sky light over shower (Four Season Living Package)
12-gallon DSI gas/electric water heater (Four Season Living Package)
Three (3) Drawers one (1) door vanity
Brushed nickel shower head and faucet
Seamless 48" x 30" fiberglass shower
50 amp Service (Residential Living Package)
75 amp converter with Charge Wizard technology (Residential Living Package)
Power vent fan with rain sensor (Four Season Living Package)
Motion sensor LED lighting in linen storage cabinet (3120/3121RL, 3700/3701LK, 3790/3791RD, 3854/3855BR)

CONSTRUCTION FEATURES

Unified wiring standard: each wire color-coded and numbered
5" Arched roof rafters
Welded aluminum framed walls and floors
Laminated sidewalls with dual layered I-wood and metal backing strips to anchor interior cabinets
Seamless 5/8" thick floor decking
Powder coated 12" steel I-beam frame
Seamless roto-cast holding tanks
Double-insulated laminated rear wall

FOUR SEASON FEATURES

35,000 BTU Furnace (Four Season Living Package)
3"x14" in-floor straight line heat duct system (Four Season Living Package)
15,000 BTU Whisper Quiet main air conditioner system, bedroom (Four Season Living Package)
15,000 BTU Whisper Quiet main air conditioner system, living room (Four Season Living Package)
Wired and framed for 3rd air conditioner (Four Season Living Package)
16,500 BTU heat pump on main air conditioner (Four Season Living Package)
Tested and approved for 0 degree usage (Four Season Living Package)
Two attic vents for cross-ventilation (Four Season Living Package)
Insulated and heated holding tanks and dump valves (Four Season Living Package)
Insulated in-floor water lines (Four Season Living Package)
Enclosed and heated low point drains (Four Season Living Package)
12V electric tank heaters (Four Season Living Package)
12V Ceiling fan with wall controls (Not Available 3760/3761FL, 3790/3791RD) (Four Season Living Package)

48" LED Fireplace (Four Season Living Package)

TOWING FEATURES

Max Turn Technology™ front cap and radius frame with Hitch Vision
Hitch Vision™ mirror
Road Armor™ pin box
Prepped for rear view camera
EXCLUSIVE Road Armor suspension
Sailun G-range tires with 6-year manufacturer warranty
Heavy duty wet bolt kit with bronze bushings and 1/2" shackle links
16" 8-lug aluminum wheels (110 psi)
7000 lb. Dexter E-Z Lube® axles with self adjusting brakes
Super-Brite LED taillights with back-up lights
LED marker lights
Undermount spare tire and carrier

EXTERIOR FEATURES

Automotive paint with 2-layers of clear coat on fiberglass front cap
High-gloss gel coated sidewalls and rear wall
Automotive frameless safety glass windows
Extra large fold away entry handle
Rear roof ladder
Roof mounted solar prep
Slam latch pass-through storage compartment doors
Extra large (30" wide by 78" tall) entry door with friction hinge (Residential Living Package)
Enormous drop-frame pass-through storage compartment (Residential Living Package)
MORyde® Step Above® entry steps with strut assist (Residential Living Package)
Motion sensor LED lights in pass-through storage compartment
LED safety light package: entry step, gooseneck, upper slide-outs and sewer termination
LED off door side scare light

EASY SET-UP FEATURES

Dometic 12V electric patio awning with LED lights and Power Channel
Second 12V electric patio awning with LED lights and Power Channel (select models)
Heated central exterior water and convenience center: (Outside shower w/ quick connect hose, Black tank flush, Easy winterization kit, Water heater bypass, Power tank fill, Enclosed low point drains, Battery disconnect, Key TV hook-ups, 12V Motion sensor light)

OPTIONS

Modern Maple Edition Package (Mandatory option)
Residential Living Package (Mandatory option)
Four Season Living Package (Mandatory option)
6 Point Hydraulic Leveling System (Mandatory option)
2" Towing Hitch: 3120/3121RL, 3700/3701LK, 3780/3781RL, 3810/3811MS, 3812/3813MS, 3854/3855BR, 3930/3931FB (Mandatory option)
2" Accessory Hitch: 3740/3741FK, 3760/3761FL, 3790/3791RD (Mandatory option)
Legacy Edition Package with Generator Ready
Full Body Paint (Requires Legacy Edition Package)
Dual Pane Windows
King Bed
Outdoor Kitchen (N/A 3740/3741FK, 3760/3761FL, 3854/3855BR)
Solar Flex System
Super Solar Flex System
Generator Ready
Onan Marquis Gold 5.5 KW LP generator
Slide-Out Awnings

BUILT FOR THE LONG HAUL



PRINT 11.2019

