



NOBO
NO BOUNDARIES

10 SERIES
(under 2,000 LBS)



16 SERIES
(under 3,500 LBS)



19 SERIES
(under 5,000 LBS)





WHAT IF THERE WERE NO•BOUNDARIES?

Designed for those who push limits, the versatile and exceptionally light weight No Boundaries (**NOBO**) travel trailer is rugged enough for any outdoor enthusiast. It's innovative and durable rooftop Rhino-Rack offers adaptable storage for Kayaks, mountain bikes, snowboards, fishing equipment, or just simply extra luggage. Towable by both 4- and 6-cylinder vehicles, **NOBO** is ready when you are.



FEATURES



**JBL PORTABLE
BLUETOOTH SPEAKER**



**MORRYDE STEPS
W/LED ENTRY STEP LIGHT**



**BEVERAGE OPENER
(STANDARD)**



**BATWING CANOPY
270° COVERAGE**



**WHEEL STEP/SEAT
(STANDARD IN OVERLANDER PACKAGE)**



**OUTDOOR KITCHEN
(STANDARD ON 10.5/10.6)**



**SEAMLESS PANORAMIC FRONT WINDOW
60" X 22" TEMPERED GLASS. FRONT CAP STANDARD WITH
BACK COUNTRY PACKAGE ON 19 SERIES, OPTIONAL ON 16 SERIES**



WHEN YOU LIVE LIFE BY A COMPASS, NOT A CLOCK.

With industry-leading ground clearance, larger diameter tires and a nimble suspension system, you'll be able to explore and set up camp in places that would otherwise be inaccessible. Additionally, the upscale interior focuses on thoughtful, useful design with ample storage and an ergonomic and refreshing living space. **NO•BO** is attractively equipped with both familiar standard equipment as well as fresh features for a truly unforgettable adventure.



NB10.6

SPECIFICATIONS

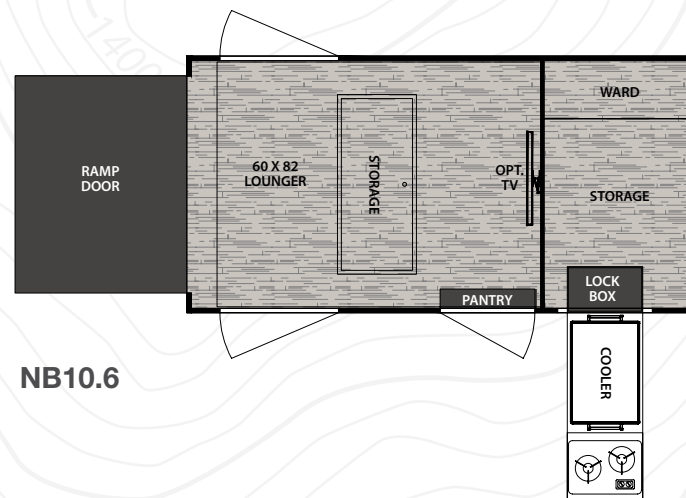
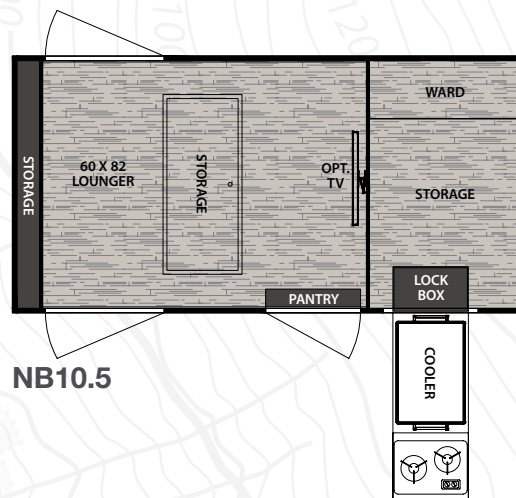
MODEL	NB10.5	NB10.6
Unloaded Vehicle Weight	1570	1606
Hitch Weight (lbs.)	210	198
Cargo Carrying Capacity	2140	1992
Roof Capacity (lbs.)	500	500
Exterior Length	13' 10"	13' 9"
Exterior Width	88"	88"
Exterior Height (w/ A/C)	6' 11"	7' 5"
Fresh Water (gal.)	30	30
Grey Water (gal.)	N/A	N/A
Black Water (gal.)	N/A	N/A

NOTE - Definitions for specifications can be found on the back page of this brochure.

KEY FEATURES

- **10.6 can haul a full-size ATV**
- **Standard Enclosed Underbelly**
- **30 gal. Fresh Water Capacity**

FLOORPLANS





10 SERIES STANDARDS/OPTIONS

DISCOVERER PACKAGE KEY STANDARD EQUIPMENT

JBL Portable Bluetooth Speaker

Complete Interior/Exterior LED Lighting PKG

LED Entry Step Light

1000 Lumen Amber/White Scare Light

Metropolitan Grey Lightweight-Ply Countertops

Stainless Steel Utility Hooks

Bottle Opener

Black Satin Faucet/Door Pulls (where applicable)

High Performance Vinyl Furniture

2-Burner Glass Recessed Cook Top

Black Stainless Steel Sink (where applicable)

Pleated Shades

USB Charging Station

Lamilux 1000 Fiberglass Exterior
Featuring Satin Matte Graphics
(Some Features N/A 10 Series)

OVERLANDER PACKAGE

Standard RVT Track (Rhino Rack #RTV148)

Two Vortex Bars (Rhino Rack #VA180B)

J-Cradle Kayak Holder (Rhino Rack #S510)

Wheel Step/Seat (Rhino Rack #RWS)

Satin Matte Finish 6-Lug Wheels

Wrapped in All Terrain Tires

OPTIONAL EQUIPMENT

13.5 BTU Low Profile Air Conditioning

5500 BTU Heat Strip
(applicable only with A/C equipped)

28" LED Flat Screen 12V TV

Power Tongue Jack w/LED Light

Cold Weather Package

Pioneer Platform
(IPO Vortex Bars and J-Cradle Kayak Rack)

Hybrid Single Bike Carrier
(Rhino Rack #RBC050)

Snowboard/Ski/Fishing Rod/Paddle Holder
(Rhino Rack #573)

J-Cradle Kayak Holder (Rhino Rack #S510)

One Standard Kayak Holder in Overlander PKG

Batwing Awning

Dinette Package

Ramp Door Screen Door (n/a 10.5)

NOBO Nest - Roof Top Tent



LOAD.



LOUNGE.



DINE.



RELAX.



REST.

REPEAT.



WHEN YOUR NEXT PATH IS OFF THE GRID.

Count on **NO•BO** to take you into uncharted territory. Escape the crowds into the remote rugged wilderness and take your gear with you. Whether in search of a big catch or a big wave, you don't have to leave amenities behind. Explore, get dirty, then return to home base to clean up, relax and recharge.



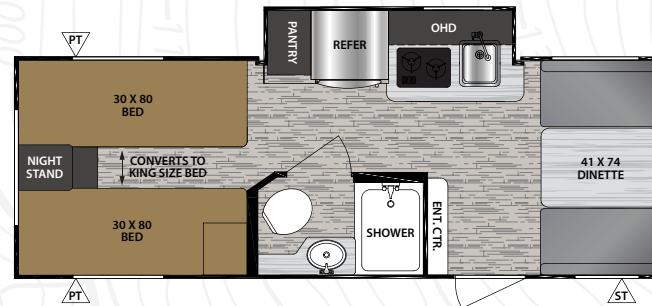
NB16.8

SPECIFICATIONS

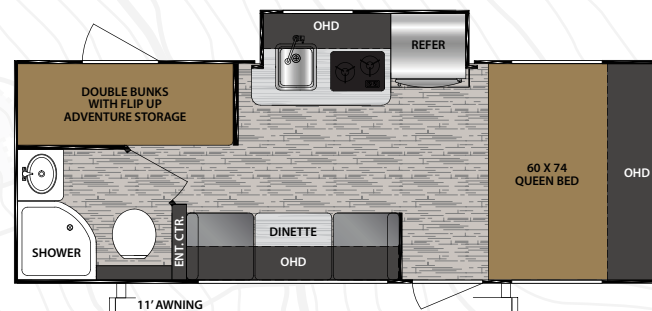
MODEL	NB16.2	NB16.6	NB16.8
Unloaded Vehicle Weight	3284	TBD	3264
Hitch Weight (lbs.)	440	TBD	270
Cargo Carrying Capacity	1556	TBD	1406
Roof Capacity (lbs.)	500	TBD	500
Exterior Length w/o Spare Tire	21' 8"	21' 8"	20' 1"
Exterior Width	96"	TBD	88"
Exterior Height (w/ A/C)	9' 11"	TBD	9' 7"
Interior Height	78"	TBD	78"
Box Width	6' 6"	6' 6"	6' 6"
Fresh Water (gal.)	30	30	30
Grey Water (gal.)	30	30	30
Black Water (gal.)	30	30	30

NOTE - Definitions for specifications can be found on the back page of this brochure.

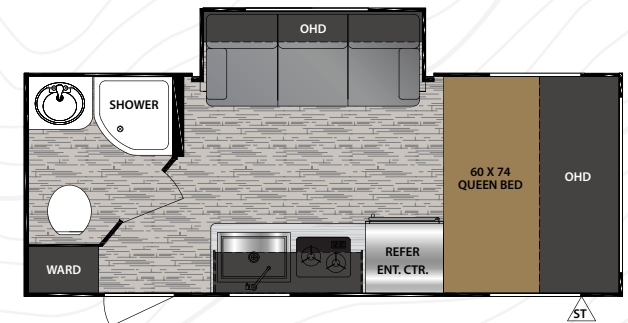
FLOORPLANS



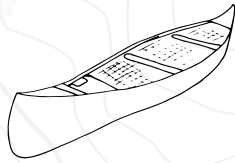
NB16.2



NB16.6



NB16.8



16 SERIES STANDARDS/OPTIONS

OVERLANDER PACKAGE

Standard RVT Track (Rhino Rack #RTV148)

Two Vortex Bars (Rhino Rack #VA180B)

J-Cradle Kayak Holder (Rhino Rack #S510)

Wheel Step/Seat (Rhino Rack #RWS)

Satin Matte Finish 6-Lug Wheels

Wrapped in All Terrain Tires

OPTIONAL EQUIPMENT

Stainless Steel Convection Microwave Oven

28" LED Flat Screen 12V TV

Power Tongue Jack w/LED Light

Cold Weather Package

Custom Front Fiberglass Protective Shell

JBL Bluetooth Speaker
and Quick Release Mount

Central Vacuum System

Solar Package (110 Watt Panel/
Digital Controller/1000 Watt Inverter)



NB16.8



NB16.8



OPTIONAL OVERLANDER AND
SOLAR PACKAGES SHOWN

NB16.8



WHEN YOU THRIVE ON PUSHING THE LIMITS.

NO•BO 19 Series delivers a true 7' wide box to align perfectly with smaller tow vehicles. Combine this with our enclosed underbelly and gate valves, panoramic front window, and torsion axle suspension system to offer you the most versatile, capable, and affordable towable on the market. Each **NO•BO** 19 series also features factory installed RVT tracks on the roof, ready to accept and integrate your personalized Rhino Rack Roof System!



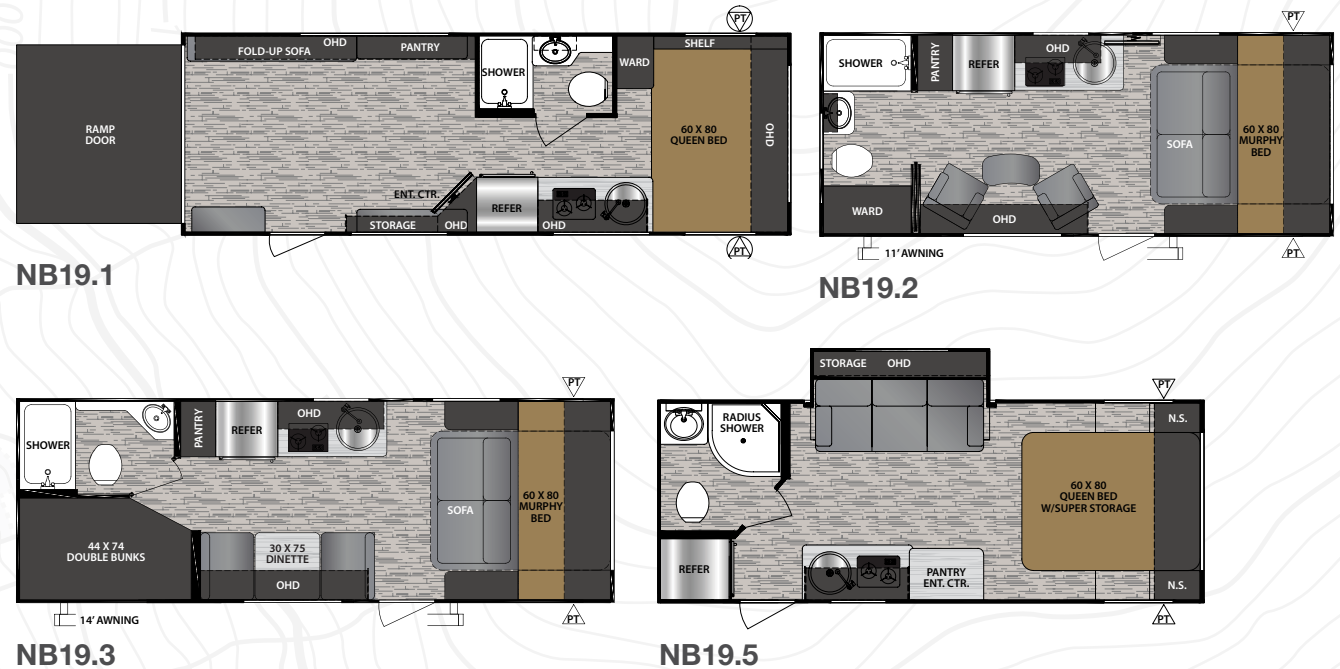
NB19.1

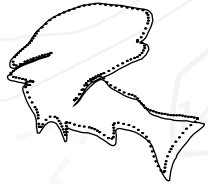
SPECIFICATIONS

MODEL	NB19.1	NB19.2	NB19.3	NB19.5	NB19.6	NB19.7	NB19.8
Unloaded Vehicle Weight	4264	TBD	TBD	3456	4284	3809	3789
Hitch Weight (lbs.)	720	TBD	TBD	365	490	388	395
Cargo Carrying Capacity	3456	TBD	TBD	1309	3206	979	1006
Roof Capacity (lbs.)	500	TBD	TBD	500	500	500	500
Exterior Length w/o Spare Tire	24' 11"	TBD	TBD	22' 8"	24' 4"	23' 8"	22' 8"
Exterior Width	88"	TBD	TBD	88"	88"	88"	88"
Exterior Height (w/ A/C)	9' 8"	TBD	TBD	9' 7"	9' 8"	9' 7"	9' 8"
Interior Height	78"	TBD	TBD	78"	78"	78"	78"
Fresh Water (gal.)	30	TBD	TBD	30	30	30	30
Grey Water (gal.)	30	TBD	TBD	30	30	30	30
Black Water (gal.)	30	TBD	TBD	30	30	30	30

NOTE - Definitions for specifications can be found on the back page of this brochure.

FLOORPLANS





NOBO
NO BOUNDARIES



19 SERIES STANDARDS/OPTIONS

DISCOVERER PACKAGE KEY STANDARD EQUIPMENT

JBL Portable Bluetooth Speaker
 Complete Interior/Exterior LED Lighting PKG
 LED Entry Step Light
 1000 Lumen Amber/White Scare Light
 Metropolitan Grey Lightweight-Ply Countertops
 Stainless Steel Utility Hooks
 Bottle Opener
 Black Satin Faucet/Door Pulls (where applicable)
 High Performance Vinyl Furniture
 2-Burner Glass Recessed Cook Top
 Black Stainless Steel Sink (where applicable)
 Pleated Shades
 USB Charging Station
 Lamilux 1000 Fiberglass Exterior
 Featuring Satin Matte Graphics
 (Some Features N/A 19 Series)

OVERLANDER PACKAGE

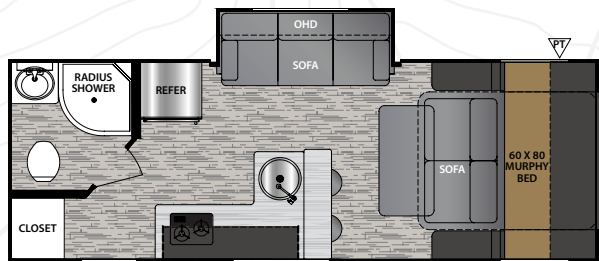
Standard RVT Track (Rhino Rack #RTV148)
 Two Vortex Bars (Rhino Rack #VA180B)
 J-Cradle Kayak Holder (Rhino Rack #S510)
 Wheel Step/Seat (Rhino Rack #RWS)
 Satin Matte Finish 6-Lug Wheels
 Wrapped in All Terrain Tires

BACK COUNTRY PACKAGE

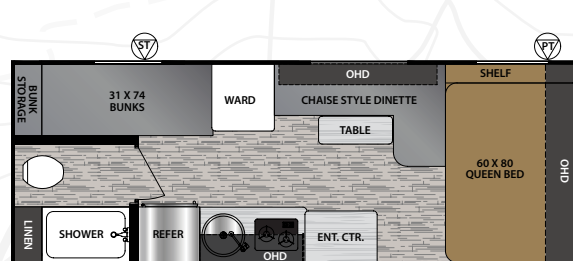
Custom Front Fiberglass Protective Shell
 Featuring Tempered Seamless Panoramic Window
 Roof Mounted Solar Prep
 13.5 BTU Low Profile Air Conditioning
 Power Awning
 Rear Ladder
 Azdel Exterior Construction

OPTIONAL EQUIPMENT

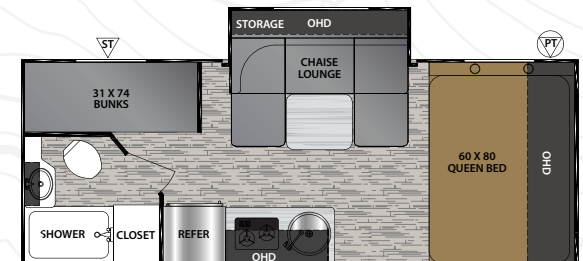
Stainless Steel Convection Microwave Oven
 28" LED Flat Screen 12V TV
 Power Tongue Jack w/LED Light
 Cold Weather Package
 Central Vacuum System
 Hybrid Single Bike Carrier (Rhino Rack #RBC050)
 Snowboard/Ski/Fishing Rod/Paddle Holder
 (Rhino Rack #573)
 J-Cradle Kayak Holder (Rhino Rack #S510)
 One Standard Kayak Holder in Overlander PKG
 Solar Package (110 Watt Panel/
 Digital Controller/1000 Watt Inverter)



NB19.6



NB19.7



NB19.8



NB19.6



NB19.6



NB19.8



NB19.6



NB19.1



NB19.1



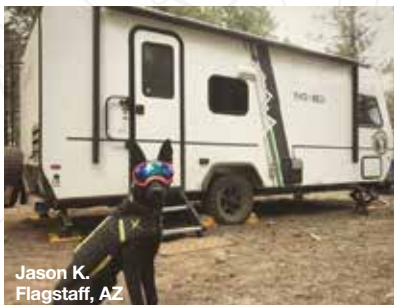
TO THOSE WITH
NO BOUNDARIES



Peter H.
Salmon River, ID



Andrew J.
Raymond, ME



Jason K.
Flagstaff, AZ



Juan A.
Padre Island



Jessie S.
Mountain Lake, VA



Geoff R.
Nordegg, AB Canada



Chris C.
Lavender Lake, WA



Forest River Owner "Digital Kit" App

Now you can have your Owner's Manual with you wherever you are. Download our FREE App from the App Store or Google Play and you'll have the information right at your fingertips.



Find us on Facebook

GVWR (Gross Vehicle Weight Rating) - is the maximum permissible weight of the unit when fully loaded. It includes all weights, inclusive of all fluids, cargo, optional equipment and accessories. For safety and product performance do NOT exceed the GVWR.

GAWR (Gross Axle Weight Rating) - is the maximum permissible weight, including cargo, fluids, optional equipment and accessories that can be safely supported by a combination of all axles.

UVW (Unloaded Vehicle Weight)** - is the typical weight of the unit as manufactured at the factory. It includes all weight at the unit's axle(s) and tongue or pin and LP Gas. The UVW does not include cargo, fresh potable water, additional optional equipment or dealer installed accessories.

*Estimated Average based on standard build optional equipment.

CCC (Cargo Carrying Capacity)** - is the amount of weight available for fresh potable water, cargo, additional optional equipment and accessories. CCC is equal to GVWR minus UVW. Available CCC should accommodate fresh potable water (8.3 lbs per gallon). Before filling the fresh water tank, empty the black and gray tanks to provide for more cargo capacity.

** Estimated average based on standard build optional equipment.

Each Forest River RV is weighed at the manufacturing facility prior to shipping. A label identifying the unloaded vehicle weight of the actual unit and the cargo carrying capacity is applied to every Forest River RV prior to leaving our facilities. The load capacity of your unit is designated by weight, not by volume, so you cannot necessarily use all available space when loading your unit.



PRE-DELIVERY INSPECTION FACILITY

20,000 square feet of quality assurance. The bare essentials for a premium product. This state-of-the-art facility gives immediate daily feedback to production for quality assurance in every unit built.

FREE MEMBERSHIP
to Forest River Owners' Group



www.forestriverfrog.com

**24/7 EMERGENCY
ROADSIDE ASSISTANCE
WITH VEHICLE PURCHASE***

TOWING	WINCH-OUT
JUMP-STARTS	MOBILE MECHANIC
TIRE CHANGES	TECHNICAL
FLUID DELIVERY	SUPPORT
LOCKOUT SERVICE	DEALER LOCATOR SERVICES



*VALID FOR 1 YEAR FROM DATE OF PURCHASE

CUSTOMER SATISFACTION

FOREST RIVER
encourages you to

BUY LOCAL

PREFERENTIAL SERVICE

PRODUCT INFORMATION

www.Forest River Buy Local.com

Your local  dealer

No Boundaries Division
Forest River, Inc.
1702 Century Dr.
Goshen, IN 46528
(574) 642.3119

www.forestriverinc.com/nobo
www.forestriveraccessories.com



Learn More
Scan this barcode using a QR Reader on your smart phone to learn more about Forest River.



A Berkshire Hathaway company.

All information contained in this brochure is believed to be accurate at the time of publication. However, during the model year, it may be necessary to make revisions and Forest River, Inc., reserves the right to make all such changes without notice, including prices, colors, materials, equipment and specifications as well as the addition of new models and the discontinuance of models shown in this brochure. Therefore, please consult with your Forest River dealer and confirm the existence of any materials, design or specifications that are material to your purchase decision. 12/19

©Copyright 2019 Forest River Inc - All Rights Reserved.