

CLASSIC

TRAVEL TRAILERS | FIFTH WHEELS

BY **Flagstaff**

PROUDLY

Millersburg Made

SINCE 1974



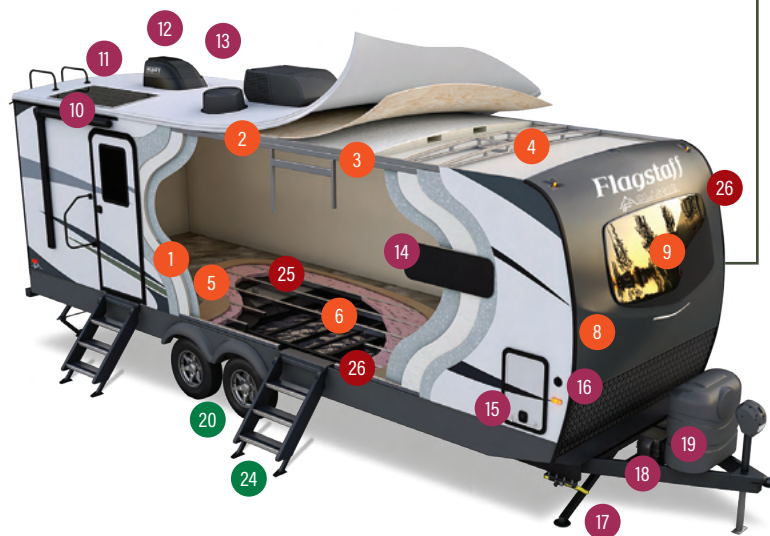
FOREST RIVER

FORESTRIVERINC.COM

Classic Travel Trailers

EXPERIENCE MODERN RESIDENTIAL LUXURY WITH SPACIOUS INTERIORS IN A TRAVEL TRAILER!

Flagstaff's 2025 Classic Travel Trailers need no introduction, but let's walk through some of the amazing features it has to offer. Modern standard amenities include a 200W roof mount solar with 30A charge controller, 1800W inverter with inverted outlets, aluminum framed dinettes and bed bases, hybrid woven flooring in flush floor slides, Showermiser water saving system, day/night roller shades, and more!



SUPERIOR CONSTRUCTION

1. Complete **Composite** Wall Construction
2. Fully **Laminated** Walkable Roof
3. Six-Sided Full-Aluminum Frame
4. Aluminum Truss Roof Bracing
5. 5/8" Tongue & Groove Plywood Floor
6. Aluminum Floor Joists
7. Aluminum Dinette, Bed, and Bunk
8. Painted Fiberglass Front Cap with Clear Coat
9. Automotive Glass Windshield

STANDARD FEATURES

10. 200W Solar Panel w/1800W Inverter & 30A Charge Controller
11. Back-Up Camera Prep
12. Maxxair® Fan with Cover
13. Winegard Air 360+ Prepped for Wi-Fi
14. Frameless Windows
15. Key-Alike Lock System with Slam Baggage Doors
16. Additional Solar Prep
17. PSX2 Power Stabilizers
18. Double Battery Boxes
19. Double 30 Lb. LP Tanks

SAFETY STANDARDS

20. Dexter® Torflex® Axles
21. TST Tire Pressure Monitor System
22. Goodyear Endurance Tires
23. Nitrogen-Filled Tires with Balancing Beads
24. MORryde® Strut Assist Steps

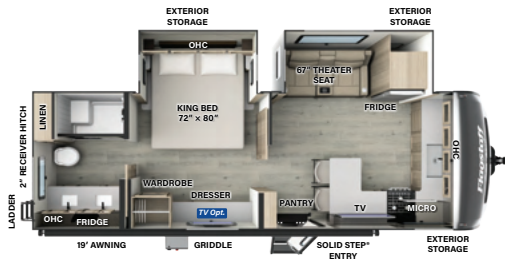
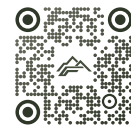
CLIMATE PROTECTION PACKAGE

25. 12V Thermostat-Controlled Heated Tanks
26. Radiant Foil in Underbelly, Front Caps & Slides

OPTIONAL FEATURES

27. Additional 200W Solar Panel
28. Slide Toppers
29. Auto-Leveling
30. 2nd or 3rd A/C Where Applicable

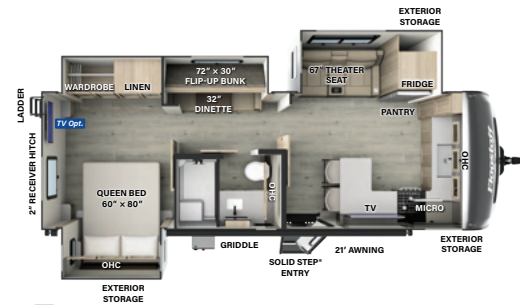




826MBR

LENGTH: 29' 11" WIDTH: 8' HEIGHT: 11' 7" HITCH: 1065 AXLE: 6685

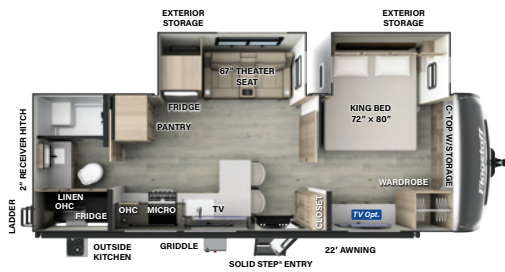
UVW: 7809 CCC: 2056 **F** 54 GAL **G** 78 GAL **B** 39 GAL



826BHS

LENGTH: 29' 11" WIDTH: 8' HEIGHT: 11' 7" HITCH: 1000 AXLE: 7220

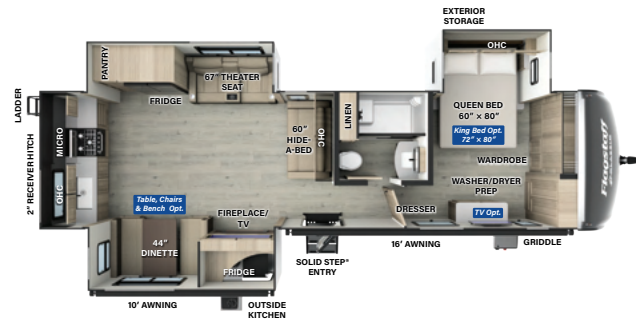
UVW: 8279 CCC: 1521 **F** 54 GAL **G** 92 GAL **B** 53 GAL



826KBS

LENGTH: 29' 11" WIDTH: 8' HEIGHT: 11' 7" HITCH: 1010 AXLE: 6580

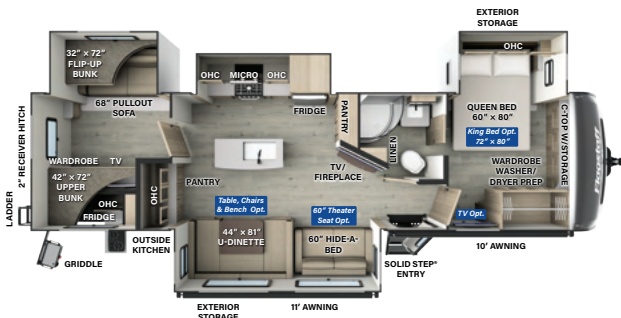
UVW: 7649 CCC: 2161 **F** 54 GAL **G** 78 GAL **B** 39 GAL



832RKSB

LENGTH: 36' 8" WIDTH: 8' HEIGHT: 11' 7" HITCH: 1266 AXLE: 8259

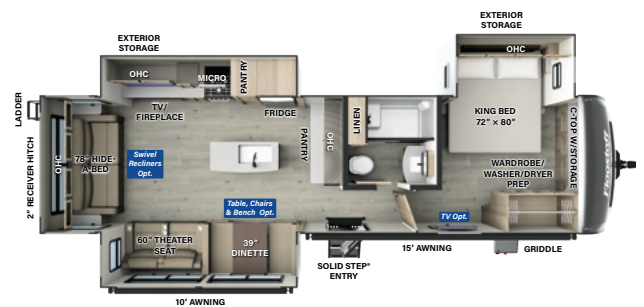
UVW: 9584 CCC: 1682 **F** 54 GAL **G** 113 GAL **B** 53 GAL



832BWS

LENGTH: 36' 8" WIDTH: 8' HEIGHT: 11' 7" HITCH: 1320 AXLE: 8290

UVW: 9669 CCC: 1651 **F** 54 GAL **G** 131 GAL **B** 53 GAL



832IKRL

LENGTH: 36' 8" WIDTH: 8' HEIGHT: 11' 7" HITCH: 1375 AXLE: 8020

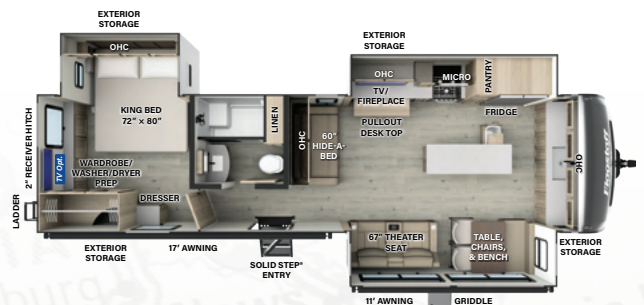
UVW: 9454 CCC: 1921 **F** 54 GAL **G** 122 GAL **B** 53 GAL



832DBS

LENGTH: 36' 10" WIDTH: 8' HEIGHT: 11' 7" HITCH: 1408 AXLE: 8313

UVW: 9780 CCC: 1628 **F** 54 GAL **G** 122 GAL **B** 53 GAL



NEW! 832FK

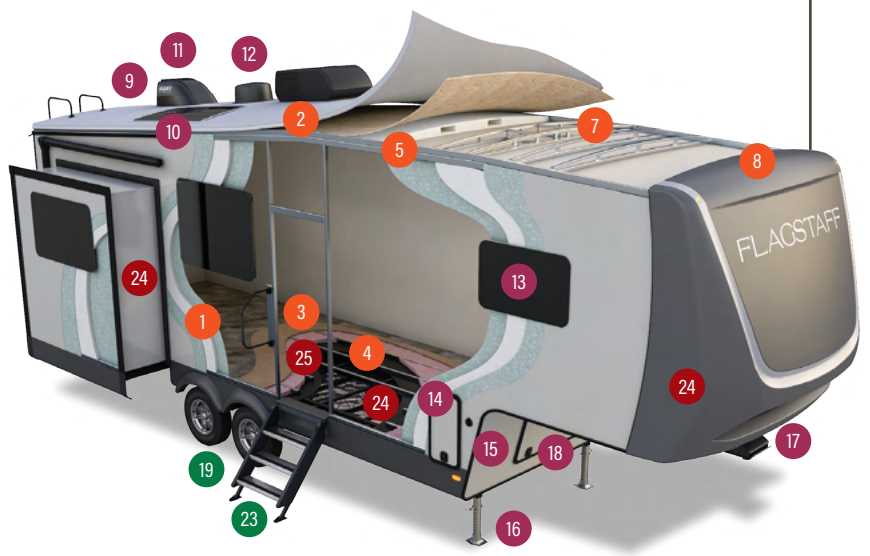
LENGTH: 36' 10" WIDTH: 8' HEIGHT: 11' 7" HITCH: 1295 AXLE: 8120

UVW: 9474 CCC: 1821 **F** 54 GAL **G** 131 GAL **B** 53 GAL

Classic Fifth Wheels

EXPERIENCE LUXURIOUS NEXT-LEVEL CAMPING WITH FLAGSTAFF CLASSIC FIFTH WHEELS.

Flagstaff's quality and superior construction reputation precedes itself in 2025 with Classic Fifth Wheels. The finest creature comforts were implemented during development of the Classic series. Amenities include electric auto leveling, residential brick fireplace surround, upgraded solid-surface countertops, and even residential style soft-close drawers.



SUPERIOR CONSTRUCTION

1. Complete **Composite** Wall Construction
2. Fully **Laminated** Walkable Roof
3. 5/8" Tongue & Groove Plywood Floor
4. Aluminum Floor Joists
5. Six-Sided Full-Aluminum Frame
6. Aluminum Dinette, Bed, and Bunk
7. Aluminum Truss Roof Bracing
8. Painted Fiberglass Front Cap with Clear Coat

STANDARD FEATURES

9. Back-Up Camera Prep
10. 200W Solar Panel with 30 AMP Charge Controller
11. Maxxair Fan with Cover
12. Winegard Air 360+ Prepped for Wi-Fi
13. Frameless Windows
14. Double 30 Lb. LP Tanks
15. Additional Solar Prep
16. Auto-Leveling
17. Units Over 32': Curt® Rota-Flex Pin Box¹
18. Key-Alike Lock System with Slam Baggage Doors

SAFETY STANDARDS

19. TST Tire Pressure Monitor System
20. ABS Brakes
21. 16" E-Rated Goodyear Endurance Tires
22. Nitrogen-Filled Tires with Balancing Beads
23. MORryde Strut Assist Steps

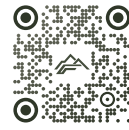
CLIMATE PROTECTION PACKAGE

24. Radiant Foil in Underbelly, Front Caps & Slides
25. 12V Thermostat-Controlled Heated Tanks

OPTIONAL FEATURES (NOT PICTURED)

26. Power Package
27. Additional 200W Solar Panel
28. Slide Toppers
29. 2nd or 3rd A/C Where Applicable

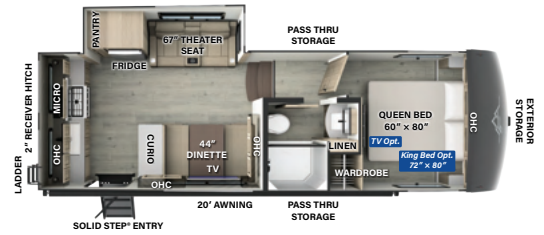
¹ Units under 32' have a Curt® Turning Point Pin Box



F281RK

LENGTH: 28' 11" WIDTH: 8' HEIGHT: 13' 2" HITCH: 1236 AXLE: 6952

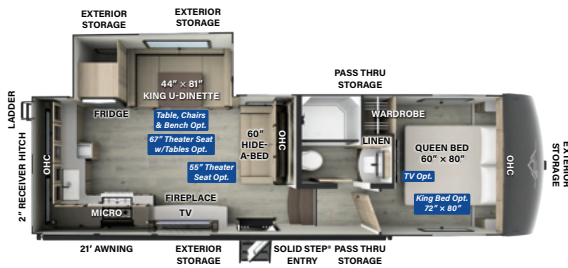
UVW: 8247 CCC: 1589 **F** 54 GAL **G** 78 GAL **B** 39 GAL



NEW!
F282RK

LENGTH: 28' 11" WIDTH: 8' HEIGHT: 13' 2" HITCH: 1356 AXLE: 6480

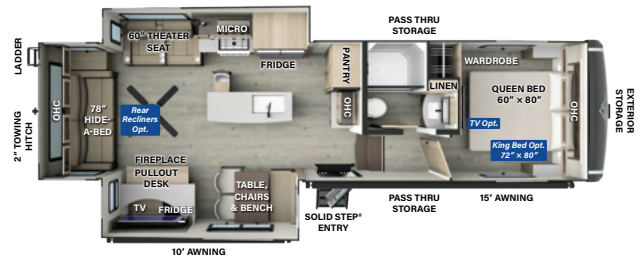
UVW: 7895 CCC: 1988 **F** 54 GAL **G** 78 GAL **B** 39 GAL



NEW!
F301RKS

LENGTH: 31' 4" WIDTH: 8' HEIGHT: 13' 2" HITCH: 1385 AXLE: 6715

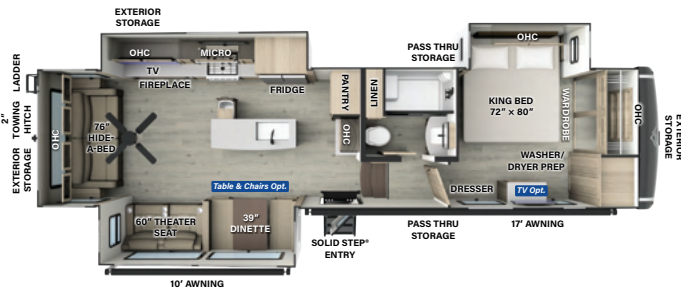
UVW: 8159 CCC: 1839 **F** 54 GAL **G** 78 GAL **B** 39 GAL



NEW!
F331RL

LENGTH: 34' WIDTH: 8' HEIGHT: 13' 4" HITCH: 1717 AXLE: 8108

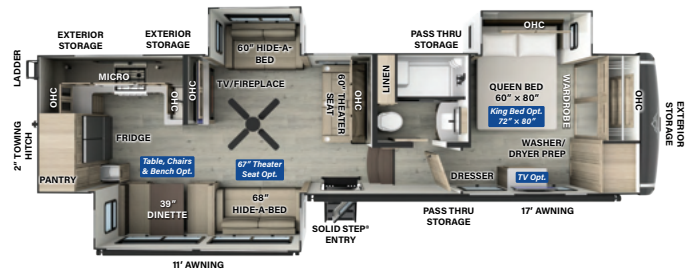
UVW: 9884 CCC: 2233 **F** 54 GAL **G** 92 GAL **B** 53 GAL



NEW!
F361RLS

LENGTH: 36' 10" WIDTH: 8' HEIGHT: 13' 4" HITCH: 1905 AXLE: 8315

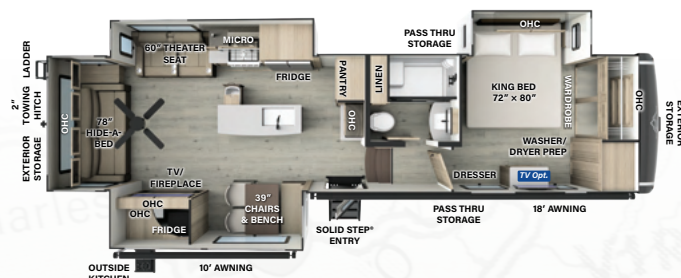
UVW: 10279 CCC: 2026 **F** 54 GAL **G** 92 GAL **B** 53 GAL



F371RK

LENGTH: 36' 10" WIDTH: 8' HEIGHT: 13' 4" HITCH: 2001 AXLE: 8290

UVW: 10350 CCC: 2051 **F** 54 GAL **G** 92 GAL **B** 53 GAL



F372RL

LENGTH: 36' 10" WIDTH: 8' HEIGHT: 13' 4" HITCH: 1905 AXLE: 8880

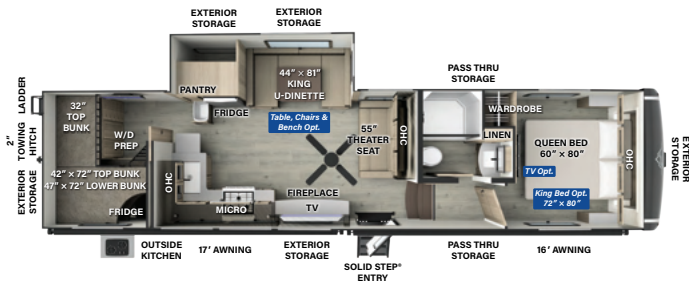
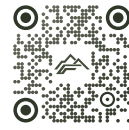
UVW: 10844 CCC: 1461 **F** 54 GAL **G** 83 GAL **B** 53 GAL

For half a century, we have proudly and passionately crafted recreational vehicles that have become synonymous with quality, innovation, and adventure.

Since our establishment in 1974, we've committed ourselves to putting quality first and doing things right, every step of the way.

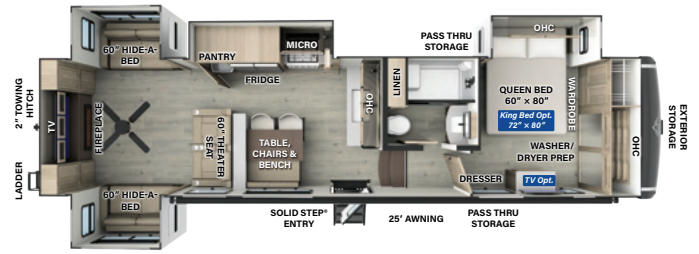
50
CELEBRATING
YEARS

FLAGSTAFF
SINCE 1974



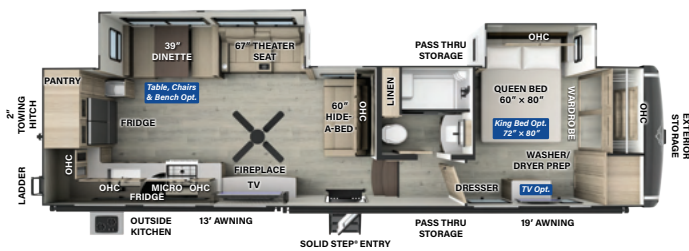
NEW! F374DBH

LENGTH: 36' 10" WIDTH: 8' HEIGHT: 13' 4" HITCH: 1745 AXLE: 7857
 UVW: 9661 CCC: 2084 **F** 54 GAL **G** 92 GAL **B** 53 GAL



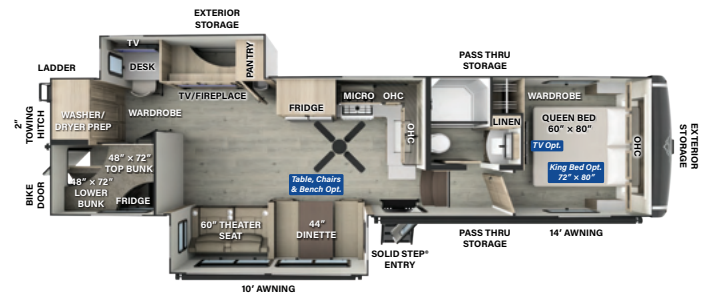
F375RL

LENGTH: 36' 10" WIDTH: 8' HEIGHT: 13' 4" HITCH: 1740 AXLE: 8580
 UVW: 10379 CCC: 1761 **F** 54 GAL **G** 92 GAL **B** 53 GAL



F376RK

LENGTH: 36' 10" WIDTH: 8' HEIGHT: 13' 4" HITCH: 1993 AXLE: 7920
 UVW: 9972 CCC: 2421 **F** 54 GAL **G** 92 GAL **B** 53 GAL



NEW! F378BH

LENGTH: 36' 10" WIDTH: 8' HEIGHT: 13' 4" HITCH: 1687 AXLE: 8506
 UVW: 10252 CCC: 1835 **F** 54 GAL **G** 131 GAL **B** 53 GAL

EXPERIENCE LIMITLESS RVING POWER!



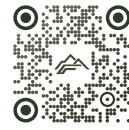
Whether boondocking or going off-grid, the Classic Fifth Wheel Power Package option was designed for outdoor enthusiasts who love adventure.



Option Includes:

- Charge at Home from a 15A Receptacle with Combimaster Power Sharing Feature
- 460Ah Lithium-Ion Battery; Optional Additional 460Ah Battery
- 3.5kW Inverter-Charger
- 200A Charge Capacity
- 50A DC/DC Charger —New!
- (6) 200W GoPower® Solar Panels
- Integrated 60A MPPT Charge Controller
- 5" Touchscreen Monitor
- Centralized System Disconnect Switch
- 15,000 BTU A/C w/Soft Start Technology

OPTIONAL POWER PACKAGE AVAILABLE ON ALL CLASSIC FIFTH WHEELS



Slide Options

Model	60" Theater Seat	67" Theater Seat	Table, Chairs & Bench	King Bed
Classic Travel Trailers				
826MBR		Standard		Standard
826BHS		Standard		
826KBS		Standard		✓
832RKSB	Standard		✓	Standard
832BWS	✓		✓	✓
832IKRL	Standard		✓	Standard
832DBS	✓		✓	✓
832FK		Standard	Standard	Standard
Classic Fifth Wheels				
F281RK		✓		✓
F282RK		Standard		✓
F301RKS		✓	✓	✓
R331RL	Standard		Standard	✓
F361RLS	Standard		✓	Standard
F371RK		✓	✓	✓
F372RL	Standard		Standard	Standard
F374DBH			✓	✓
F375RL			Standard	✓
F376RK		Standard	✓	✓
F378BH	Standard		✓	✓



MOBILE DEVICE CONTROL!

Your RV is equipped with Lippert™ One Control®. This WiFi app-based interface provides comfort and convenience to control and monitor your RV's functions.

With the WeRV app you can control your lights, slides and awning from your fingertips.

For a complete list of control capabilities, please visit lippert.com/onecontrol

Whenever, wherever we make your experience better.



Download the WeRV App!



Apple and App Store are registered trademarks of Apple Inc. Google Play and the Google Play logo are trademarks of Google LLC.

Flagstaff

201 WEST ELM MILLERSBURG, IN 46543
WWW.FORESTRIVERINC.COM/FLAGSTAFF
574.642.2640



RV WITH US



@FlagstaffRVs

50

CELEBRATING
YEARS

FLAGSTAFF
SINCE 1974

Flagstaff Warranty. Our Promise.

FOR DETAILS ON FLAGSTAFF'S COMPLETE WARRANTY PROGRAM, SEE YOUR FLAGSTAFF DEALER.

When it comes to backing products with the same quality and commitment it does when it begins the manufacturing process, the only name you have to remember when you're looking for a recreational vehicle is Flagstaff. Flagstaff offers the following additional limited warranties to the original purchasers. Consult written warranty for details.

- 1** Limited lifetime roofing warranty*
- 2** Two-year fiberglass warranty.
- 3** Ten-year Torflex® axle warranty.
- 4** One-year bumper to bumper warranty.

*Lifetime warranty is limited to original owner

CLASSIC PACKAGES

CLASSIC TRAVEL TRAILER STANDARD PACKAGE B

- White Fiberglass Exterior
- High Gloss Fiberglass Cap
- Composite Structural Exterior Walls
- Vacuum Laminated Roof
- Aluminum Cage Construction
- Front Windshield (Where Available)
- Frameless Windows
- Slam Latch Baggage Doors w/Magnetic Catch
- Enclosed Underbelly w/Thermostatically Controlled Heated Holding Tanks
- Pre-wire for Backup Camera
- Power Awning
- 200W Solar Panel w/Inverter & Additional Solar Side Port
- Speaker w/Bluetooth® Connection
- AIR 360+ Omnidirectional Antenna w/WI-FI Prep
- One Control® APP Monitor Panel
- Smart TV
- Bunkroom Smart Entertainment TV
- 50 AMP Service
- 12V Refrigerator
- Fireplace (Where Available)
- Maxxair Power Fan w/Remote
- 6 Gallon Quick Recovery Auto Ignite Gas/Electric Water Heater
- Dexter® Torflex® Torsion Axles
- Goodyear Endurance Tires w/TPMS
- Roller Shades
- MORryde Strut Assist Steps
- Key Alike Doors
- Undermount Kitchen Sink w/High Rise Faucet
- Solid Surface Kitchen Countertops
- Soft Close Roller Bearing Drawers
- Soft Close Hidden Cabinet Hinges
- Rear Ladder
- Black Tank Flush
- Shower Miser
- Exterior Hot/Cold Water Port
- Gas Griddle
- 2" Accessory Hitch
- Spare Tire
- Dual 15K BTU A/C Installed (832AKSB, 832BWS, 832IKRL, 832DBS, 832FK)
- 15K BTU A/C w/Second A/C Prep, Power Stabilizer Jacks (826MBR, 826BHS, 826KBS)

OPTIONS

- Andover Sable Woodgrain w/Solid Doors
- 4.0 Leveling System
- Thermopane Windows
- 15K BTU 2nd Roof A/C with Heat (826MBR, 826BHS, 826KBS) STD All Other Models
- 15K BTU 3rd Roof A/C (N/A 826MBR, 826BHS, 826KBS)
- Washer/Dryer (832RKS)
- Washer/Dryer Combo (832BWS, 832IKRL, 832DBS, 832FK)
- 2 Slide Toppers (826MBR, 826BHS, 826KBS)
- 3 Slide Toppers (832AKSB, 832IKRL, 832FK)
- 4 Slide Toppers (832BWS, 832DBS)
- Smart Bedroom TV
- Free Standing Table, Chairs & Bench (832AKSB, 832BWS, 832IKRL, 832DBS)
- Two Swivel Recliners IPO HAB Sofa (832IKRL)
- Theater Seating IPO Hide-A-Bed (832BWS, 832DBS)
- King Bed IPO Queen Bed (832AKSB, 832BWS, 832DBS)
- Extra 200W Roof Solar Panel
- Extra Maxxair Vent Fan & Cover w/Remote - Bunk Room (N/A with 3rd A/C)
- Extra Maxxair Vent Fan & Cover w/Remote - Bedroom (N/A with STD 2nd A/C)
- Extra Maxxair Vent Fan & Cover w/Remote - Kitchen/Living Room

CLASSIC FIFTH WHEEL STANDARD PACKAGE A

- Clay Fiberglass Exterior
- High Gloss Fiberglass Cap
- Composite Structural Exterior Walls
- Vacuum Laminated Roof
- Aluminum Cage Construction
- Frameless Windows
- Slam Latch Baggage Doors w/Magnetic Catch
- Enclosed Underbelly w/Thermostatically Controlled Heated Holding Tanks
- Pre-wire for Backup Camera
- 200W Solar Panel w/Additional Solar Side Port
- Speakers w/Bluetooth® Connection
- AIR 360+ Omnidirectional Antenna w/WI-FI Prep
- Smart TV
- Bunkroom Smart Entertainment TV
- 50 AMP Service
- 12V Refrigerator
- Fireplace (Where Available)
- 12 Gallon Quick Recovery Auto Ignite Gas/Electric Waterheater
- Curt® Slipper Roller Axles
- Goodyear Endurance Tires w/TPMS
- Roller Shades
- MORryde Strut Assist Steps
- Key Alike Doors
- Undermount Kitchen Sink w/High Rise Faucet
- Solid Surface Kitchen Countertops
- Soft Close Roller Bearing Drawers
- Soft Close Hidden Cabinet Hinges
- Rear Ladder
- Black Tank Flush
- 4.0 Leveling System
- Dual 15K BTU A/C Installed, 2" Towing Hitch, Curt® Rota-Flex Pinbox (F331RL, F361RLS, F371RK, F372RL, F374DBH, F375RL, F376RK, F378BH)
- 15K BTU A/C w/Second A/C Prep, Turning Point Pinbox (F281RK, F282RK, F301RKS)

OPTIONS

- Andover Sable Woodgrain w/Solid Doors
- Thermopane Windows
- 15K BTU 2nd Roof A/C with Heat (F281RK, F282RK, F301RKS) STD All Other Models
- 15K BTU 3rd Roof A/C (N/A F281RK, F282RK, F301RKS)
- Washer/Dryer (F361RLS, F371RK, F372RL, F375RL, F376RK)
- Washer/Dryer Combo (F374DBH)
- Maxxair Power Fan Cover with Remote
- Slide Topper (F282RK, F301RKS, F374DBH)
- 2 Slide Toppers (F281RK, F331RL, F376RK, F378BH)
- 3 Slide Toppers (F361RLS, F371RK, F372RL)
- 4 Slide Toppers (F375RL)
- Smart Bedroom TV
- Free Standing Table, Chairs and Bench (Option: F301RKS, F361RLS, F374DBH, F371RK, F376RK, F378BH)
- Power Package with 460Ah Lithium Battery
- Second 460Ah Lithium Battery Installed with Power Package
- Theater Seat IPO Dinette (F301RKS, F374BH)
- Theater Seating IPO Hide-A-Bed (F281RK, F301RKS)
- Two Swivel Recliners IPO HAB Sofa (F331RL)
- King Bed IPO Queen Bed (STD F361RLS, F372RL)
- Extra 200W Roof Solar Panel
- Extra Maxxair Vent Fan & Cover - Bunk Room
- Extra Maxxair Vent Fan & Cover - Bedroom (N/A with STD 2nd A/C)
- Extra Maxxair Vent Fan & Cover w/Remote - Kitchen/LIVING ROOM

EACH NEW FOREST RIVER PURCHASE PROVIDES:

- ✓ Pre-delivery Inspection.
- ✓ Digital Owner's Manual.
- ✓ Free Membership to Forest River Owners Group (FROG). Learn more at www.forestriverfrog.com.
- ✓ A Contribution to Care Camps Foundation www.carecamps.org.
- ✓ 1 Year Free Roadside Assistance from Date of Purchase.



LEARN MORE:

Scan this QR code with your mobile device to learn more about Forest River.



A Berkshire Hathaway Company



SPECIFICATION DEFINITIONS:

Scan this barcode using a QR reader on your smartphone to learn RV terminology and more!



YOUR FLAGSTAFF DEALER

All information contained in this brochure is believed to be accurate at the time of publication. However, during any model year, it may be necessary to make changes to the manufacturing process of the units and information in this brochure. Your unit may differ from the information in this brochure due to any changes in the manufacturing process and equipment. Forest River, Inc., reserves the right to make all such changes without notice, including prices, colors, combinations, materials, equipment and specifications of any model as well as the addition of new models and the discontinuance of models shown in this brochure. Therefore, please consult with your Forest River dealer and confirm the availability of any materials, combinations, designs, or specifications that are meaningful to your purchase decision. © 2024 Flagstaff, a Division of Forest River, Inc., a Berkshire Hathaway Company. All Rights Reserved. Forest River, Inc. 10/24