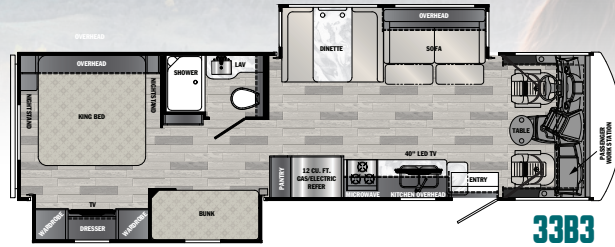


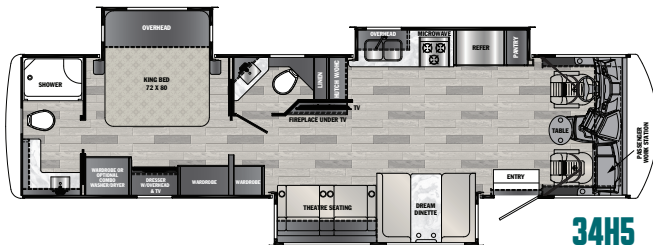
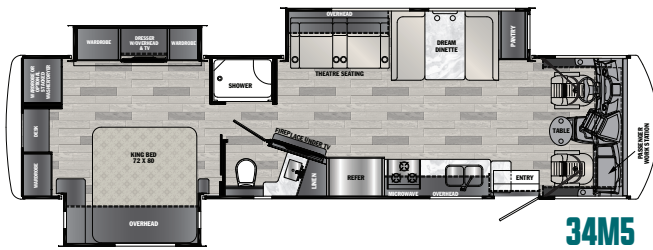
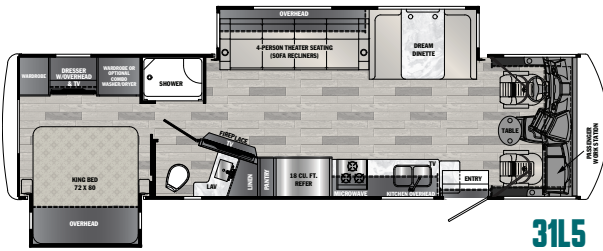
GEORGETOWN

BY FOREST RIVER

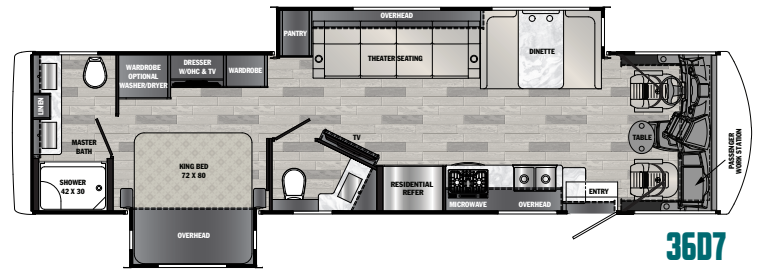
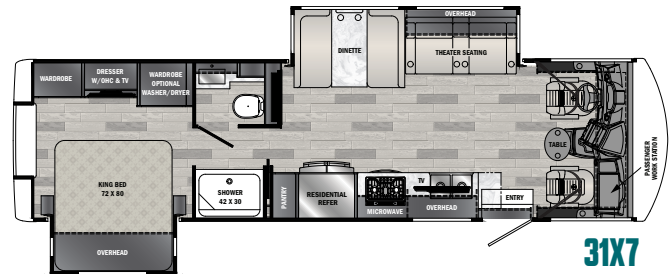
GT3



GT5



GT7



FOREST RIVER

FORESTRIVERINC.COM

GEORGETOWN SPECIFICATIONS

MODEL	32A3	33B3	31L5	34M5	34H5	36F5	31X7	36D7	36K7
Engine	7.3L V8	7.3L V8	7.3L V8	7.3L V8	7.3L V8	7.3L V8	7.3L V8	7.3L V8	7.3L V8
Horse Power	335	335	335	335	335	335	335	335	335
Torque (lb.-ft.)	468	468	468	468	468	468	468	468	468
Wheelbase	228"	228"	228"	242"	242"	252"	228"	252"	252"
GVWR (lbs.)	22,000	22,000	22,000	22,000	22,000	24,000	22,000	26,000	26,000
GCWR (lbs.)	26,000	26,000	26,000	26,000	26,000	30,000	26,000	30,000	30,000
GAWR Front (lbs.)	8,000	8,000	8,000	8,000	8,000	9,000	8,000	9,000	9,000
GAWR Rear (lbs.)	15,000	15,000	15,000	15,000	15,000	15,500	15,000	15,500	15,500
Exterior Width	100"	100"	100"	100"	100"	100"	100"	100"	100"
Exterior Length	34' 7"	34' 6"	34' 11"	37' 11"	37' 10"	39' 7"	33' 11"	37' 11"	40' 1"
Exterior Height (with A/C)	12' 9"	12' 9"	12' 9"	12' 9"	12' 9"	12' 10"	12' 10"	12' 11"	12' 11"
Fuel Capacity (gal.)	80	80	80	80	80	80	80	80	80
LP Capacity (lbs.)	103	103	103	103	103	103	TBD	103	103
Fresh Water Capacity (gal.)	52	52	82	82	82	73	73	85	85
Water Heater Capacity (gal.)	6	6	6	6	6	6	10	10	10
Gray Tank Capacity (gal.)	42	42	42	52	52	52	52	52	52
Black Tank Capacity (gal.)	42	42	42	52	52	52	52	52	52
Awning Length	17'	12'	19'	18'	17' & 12'	18'	17'	20'	18'

KEY FEATURES

- 22.5 inch tires standard
- 2 AC's with at least 1 heat pump
- 1 Piece seamless fiberglass roof
- Power theatre seating available on all floor plans
- 30 inch Wide entry door (Largest in the industry)
- 200W roof mounted solar panel
- Residential stainless steel appliance package
- Auto Generator start
- Arctic Package
- Sony radio with wireless Carplay & Android Auto
- P2K Bunk System

GVWR (Gross Vehicle Weight Rating) is the maximum permissible weight of the unit when fully loaded. It includes all weights, inclusive of all fluids, occupants, cargo, optional equipment and accessories. For safety and product performance do NOT exceed the GVWR.

GCWR (Gross Combined Weight Rating) is the maximum permissible loaded weight of your motor home and any towed trailer or towed vehicle. Actual GCWR of this vehicle may be limited by the sum of the GVWR and the installed hitch receiver maximum capacity rating; see hitch rating label for detail.

GAWR (Gross Axle Weight Rating) is the maximum permissible weight, including cargo, fluids, optional equipment and accessories that can be safely supported by each axle.

UVW (Unloaded Vehicle Weight)* is the typical weight of the unit as manufactured at the factory. It includes all weight at the unit's axle(s), including full fuel, all fluids and LP Gas. The UVW does not include cargo, fresh potable water, additional optional equipment or dealer installed accessories.

*Estimated Average based on standard build optional equipment.

CCC (Cargo Carrying Capacity)** is the amount of weight available for fresh potable water, cargo, passengers, additional optional equipment and accessories. CCC is equal to GVWR minus UVW. Available CCC should accommodate fresh potable water (8.3 lbs per gallon). Before filling the fresh water tank, empty the black and gray tanks to provide for more cargo capacity.

** Estimated average based on standard build optional equipment

Each Forest River motorhome is weighed at the manufacturing facility prior to shipping. A label identifying the unloaded vehicle weight of the actual unit and the cargo carrying capacity is applied to every Forest River motorhome prior to leaving our facilities.

The load capacity of your unit is designated by weight, not by volume, so you cannot necessarily use all available space when loading your unit.

Actual towing capacity is dependent upon your particular loading and towing circumstances, which includes the GVWR, GAWR and GCWR as well as adequate trailer brakes. Please refer to the Operator's Manual of your vehicle for further towing information.

All information contained in this brochure is believed to be accurate at the time of publication. However, during the model year, it may be necessary to make revisions and Forest River reserves the right to make all such changes without notice, including prices, colors, materials, equipment and specifications as well as the addition of new models and the discontinuance of models shown in this brochure. Therefore, please consult with your Forest River dealer and confirm the existence of any materials, design or specifications that are material to your purchase decision. 8/24

©Copyright 2024 Georgetown a Division of Forest River Inc - All Rights Reserved.



Learn More:
Scan this barcode using a QR reader on your smart phone to learn more about Forest River.



GEORGETOWN

Forest River Inc.
Georgetown Division
902 County Road 1
Elkhart, IN 46515
(574) 367-3285