

T  
R  
A  
V  
E  
L  
  
T  
R  
A  
I  
L  
E  
R  
S

PROUDLY  
*Millersburg Made*  
SINCE 1974



***Flagstaff***

BY FOREST RIVER


# MICRO LITE FLOORPLANS

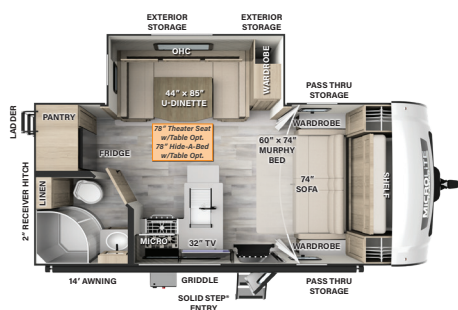


## POWER PACKAGE

### Includes:\*

- 460Ah Lithium-Ion Battery
- 3kW Inverter-charger
- 5" Touchscreen
- 160A Charge Capacity
- (5) 200W GoPower® Solar Panels
- Integrated 60A MPPT Charge Controller
- Centralized System Disconnect Switch
- 13,500 BTU A/C w/Soft Start Technology

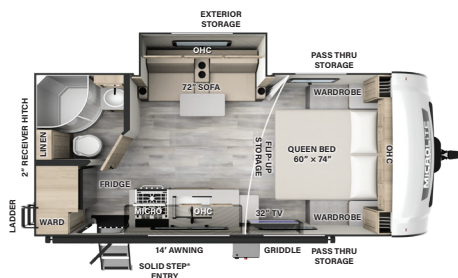
\*Power Package available in Select Micro Lite Models Only. Look for the  Icon Next to the Floorplan.



### 21DS

LENGTH: 22' 4" WIDTH: 8' HEIGHT: 10' 11" HITCH: 681 AXLE: 4237

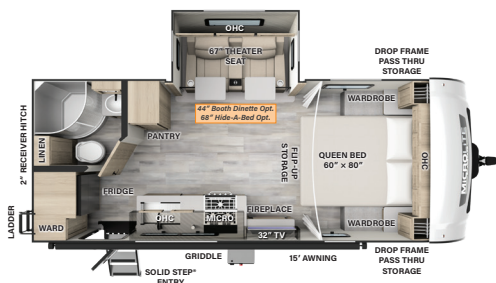
UWW: 4977 CCC: 1864 **F** 54 GAL **G** 30 GAL **B** 30 GAL



### 21FBRS

LENGTH: 22' 4" WIDTH: 8' HEIGHT: 10' 3" HITCH: 557 AXLE: 3877

UWW: 4493 CCC: 1344 **F** 54 GAL **G** 30 GAL **B** 30 GAL



### 22FBS

LENGTH: 23' 10" WIDTH: 8' HEIGHT: 10' 11" HITCH: 634 AXLE: 4439

UWW: 5132 CCC: 1662 **F** 54 GAL **G** 30 GAL **B** 30 GAL

# Construction

## SUPERIOR CONSTRUCTION

- |                                                |                                                           |
|------------------------------------------------|-----------------------------------------------------------|
| 1. Complete <b>Composite</b> Wall Construction | 6. Aluminum Floor Joists                                  |
| 2. Fully Laminated Walkable Roof               | 7. Frameless Windows                                      |
| 3. 6-Sided Full-Aluminum Frame                 | 8. Painted Fiberglass Front Cap w/Clear Coat <sup>1</sup> |
| 4. Aluminum Truss Roof Bracing                 | 9. Automotive Glass Windshield                            |
| 5. 5/8" Tongue & Groove Plywood Floor          |                                                           |

## STANDARD FEATURES

- |                                                                     |                                         |
|---------------------------------------------------------------------|-----------------------------------------|
| 10. 200W Solar Panel with 1800W Inverter & 30 AMP Charge Controller | 16. Sport Tire and Wheel Package        |
| 11. Back-Up Camera Prep                                             | 17. PSX2 Power Stabilizers <sup>2</sup> |
| 12. Maxxair Fan with Cover                                          | 18. Additional Solar Prep               |
| 13. Winegard Air 360+ Prepped for Wi-Fi                             | 19. Double Battery Boxes                |
| 14. Key-Alike Lock System                                           | 20. Double 30 Lb. LP Tanks              |
| 15. Slam Baggage Doors                                              |                                         |

## SAFETY STANDARDS

- |                                                                                  |                                             |
|----------------------------------------------------------------------------------|---------------------------------------------|
| 21. Nitrogen-Filled Goodyear Endurance Tires w/ TST Tire Pressure Monitor System | 22. Dexter® Torflex® Axles                  |
|                                                                                  | 23. MORryde Strut Assist Steps <sup>3</sup> |

## CLIMATE PROTECTION PACKAGE

- |                                            |                               |
|--------------------------------------------|-------------------------------|
| 24. 12V Thermostat-Controlled Heated Tanks | 25. Radiant Foil In Front Cap |
|--------------------------------------------|-------------------------------|

## Optional Features

- |                                                            |                                 |
|------------------------------------------------------------|---------------------------------|
| 26. Power Package (N/A 21FBRS, 25FKS, 25FKBS) <sup>4</sup> | 27. Additional 200W Solar Panel |
|------------------------------------------------------------|---------------------------------|

1 Super Lite Only; Micro Lite comes with a fiberglass front cap. 2 Super Lite Only; Optional on Micro Lite.  
3 N/A Micro Lite 21FBRS 4 Micro Lite Only.

# Slide Options

Model	Theater Seat	Hide-A-Bed	Table & Chairs	Booth Dinette	King Bed
Micro Lite Travel Trailers					
21DS	✓	✓		Standard U-Dinette	
21FBRS					
22FBS	Standard	✓		✓	
25FKS	✓	✓		Standard U-Dinette	
25BRDS	✓	✓		Standard U-Dinette	
25FBLS	Standard	✓		✓	
25BDS	Standard	✓		✓	
25SRK	Standard	✓		Standard	
25FKBS	Standard	✓			
25DK	✓	✓		Standard	
25FBDS	Standard	✓			
Super Lite Travel Trailers					
26RBWS	Standard	✓	✓	Standard	
26FKBS	Standard	✓	✓	Standard	
26RKBS	Standard	✓	✓	Standard	
26BHW	Standard	✓			
27BHWS	Standard	✓	✓	Standard U-Dinette	
27FBIK	Standard	✓	✓	Standard	✓
29RLBS	Standard	Standard	✓	Standard	✓
29RLS	Standard	Standard			
29BHS	Standard	✓	✓	Standard U-Dinette	



# SUPER LITE

Flagstaff's Micro Lite and Super Lite provide one of the best values in the lightweight travel trailer market. Both models are built with superior build quality that exceed Flagstaff's reputation.



## Customer Assurance Inspection (CAI)

CAI is our offline PDI facility where all units are run through rigorous testing protocols to ensure Flagstaff's quality standards are exceeded. We strive to provide a quality RV we're proud of and would camp in ourselves.

In 2023, our CAI facility moved to a new 16,950 FT<sup>2</sup> location in Millersburg to combine Quality, Engineering, Design, and Marketing in one location.

## WeRV App Control

Your RV is equipped with Lippert™ One Control®. This WiFi app-based interface provides comfort and convenience to control and monitor your RV's functions. Visit [lippert.com/onecontrol](http://lippert.com/onecontrol) for a complete list of capabilities.



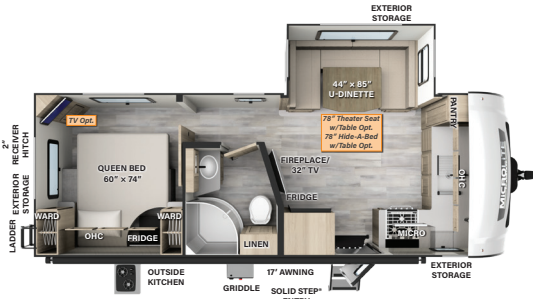
Download Today!



Apple and App Store are registered trademarks of Apple Inc. Google Play and the Google Play logo are trademarks of Google LLC.

# Flagstaff

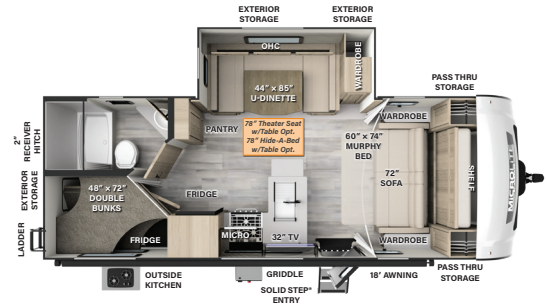
## MICRO LITE FLOORPLANS



**25FKS**

LENGTH: 25' 11" WIDTH: 8' HEIGHT: 10' 11" HITCH: 724 AXLE: 4768

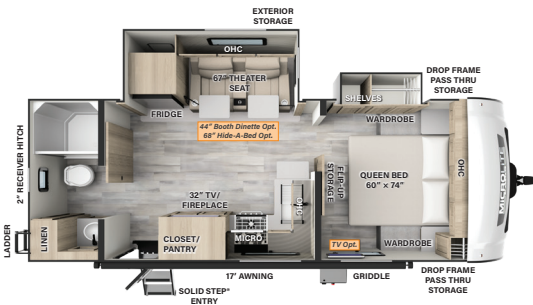
UWW: 5551 CCC: 1333 **F** 54 GAL **G** 60 GAL **B** 30 GAL



**25BRDS**

LENGTH: 25' 11" WIDTH: 8' HEIGHT: 10' 11" HITCH: 773 AXLE: 4667

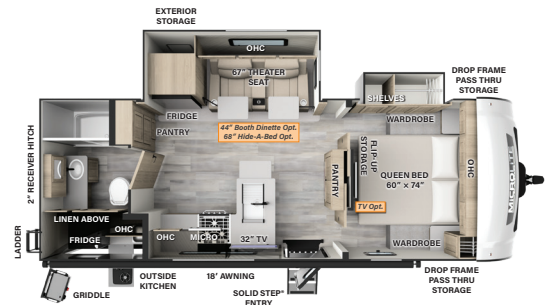
UWW: 5499 CCC: 1434 **F** 54 GAL **G** 30 GAL **B** 30 GAL



**25FBLS**

LENGTH: 25' 10" WIDTH: 8' HEIGHT: 10' 11" HITCH: 697 AXLE: 5000

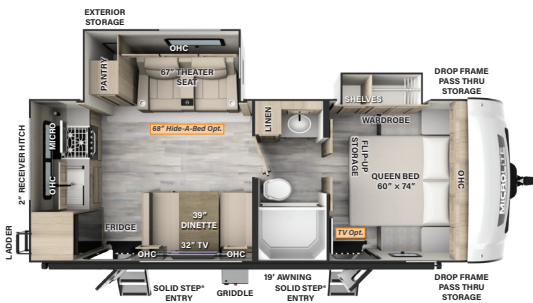
UWW: 5756 CCC: 1941 **F** 54 GAL **G** 60 GAL **B** 30 GAL



**25BSDS**

LENGTH: 25' 10" WIDTH: 8' HEIGHT: 10' 11" HITCH: 660 AXLE: 5252

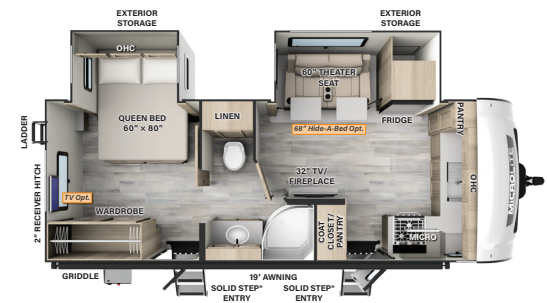
UWW: 5971 CCC: 1689 **F** 54 GAL **G** 30 GAL **B** 30 GAL



**NEW!**  
**25SRK**

LENGTH: 25' 10" WIDTH: 8' HEIGHT: 10' 11" HITCH: 681 AXLE: 5112

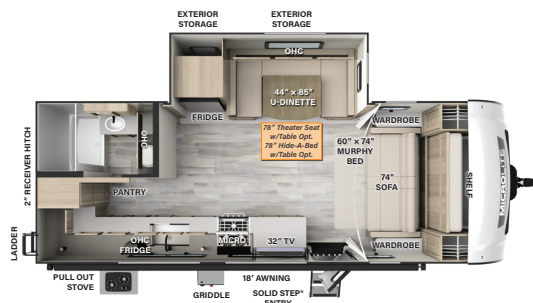
UWW: 5852 CCC: 1829 **F** 54 GAL **G** 60 GAL **B** 30 GAL



**25FKBS**

LENGTH: 25' 11" WIDTH: 8' HEIGHT: 10' 11" HITCH: 778 AXLE: 5340

UWW: 6177 CCC: 1601 **F** 54 GAL **G** 60 GAL **B** 30 GAL



**NEW!**  
**25DK**

LENGTH: 25' 11" WIDTH: 8' HEIGHT: 10' 11" HITCH: 615 AXLE: 5100

UWW: 5774 CCC: 1841 **F** 54 GAL **G** 30 GAL **B** 30 GAL



**NEW!**  
**25FBDS**

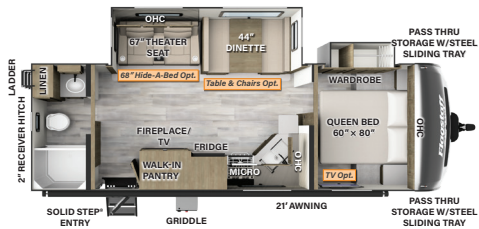
LENGTH: 25' 10" WIDTH: 8' HEIGHT: 10' 11" HITCH: 645 AXLE: 4915

UWW: 5619 CCC: 2026 **F** 54 GAL **G** 60 GAL **B** 30 GAL



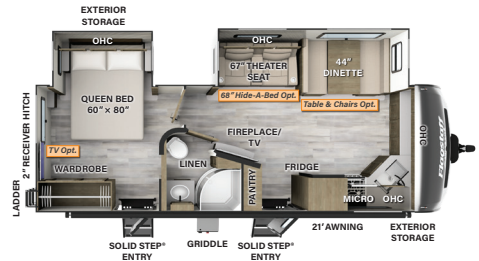
Power Package Option Available

# SUPER LITE FLOORPLANS



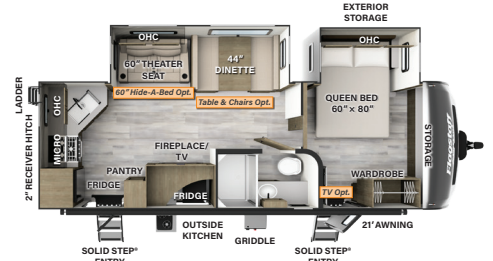
**26RBWS**

LENGTH: 29' 9" WIDTH: 8' HEIGHT: 11' 2" HITCH: 840 AXLE: 5742  
UWV: 6641 CCC: 1999 **F** 54 GAL **G** 90 GAL **B** 45 GAL



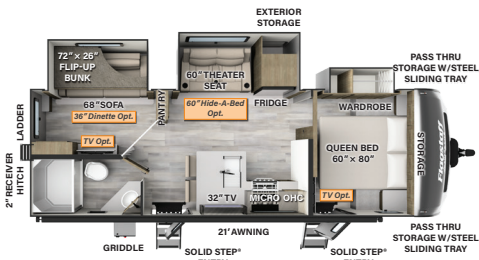
**26FKBS**

LENGTH: 29' 8" WIDTH: 8' HEIGHT: 11' 2" HITCH: 946 AXLE: 5831  
UWV: 6836 CCC: 1910 **F** 54 GAL **G** 90 GAL **B** 45 GAL



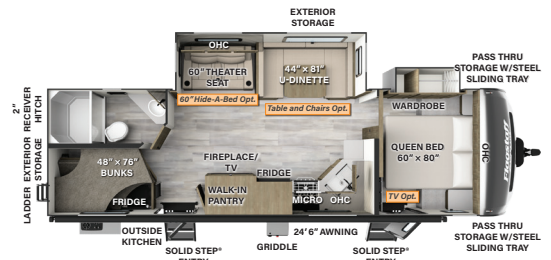
**26RKBS**

LENGTH: 29' 9" WIDTH: 8' HEIGHT: 11' 2" HITCH: 796 AXLE: 6133  
UWV: 6988 CCC: 1608 **F** 54 GAL **G** 90 GAL **B** 45 GAL



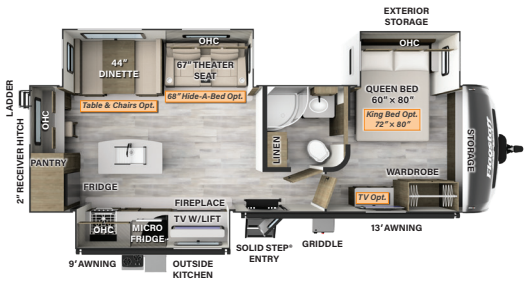
**NEW!**  
**26BHW**

LENGTH: 29' 9" WIDTH: 8' HEIGHT: 11' 3" HITCH: 938 AXLE: 6137  
UWV: 7134 CCC: 1604 **F** 54 GAL **G** 90 GAL **B** 45 GAL



**27BHWS**

LENGTH: 32' 10" WIDTH: 8' HEIGHT: 11' 2" HITCH: 921 AXLE: 6330  
UWV: 7310 CCC: 1411 **F** 54 GAL **G** 90 GAL **B** 45 GAL



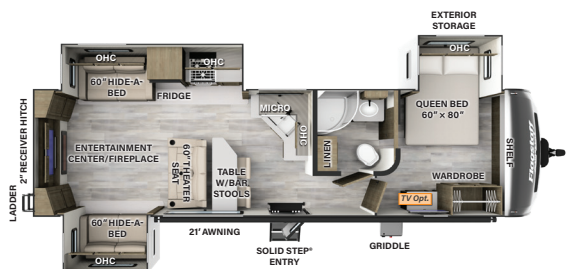
**27FBIK**

LENGTH: 33' 1" WIDTH: 8' HEIGHT: 11' 3" HITCH: 978 AXLE: 7114  
UWV: 8151 CCC: 1627 **F** 54 GAL **G** 90 GAL **B** 45 GAL



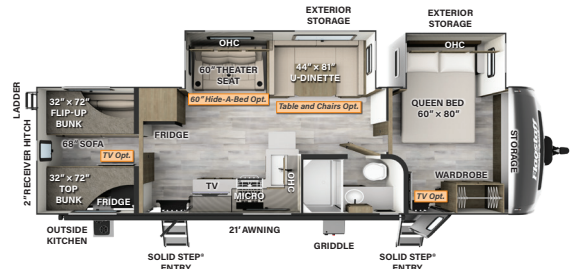
**29RLBS**

LENGTH: 35' 5" WIDTH: 8' HEIGHT: 11' 3" HITCH: 1100 AXLE: 7400  
UWV: 8559 CCC: 1341 **F** 54 GAL **G** 45 GAL **B** 45 GAL



**NEW!**  
**29RLS**

LENGTH: 35' 5" WIDTH: 8' HEIGHT: 11' 2" HITCH: 930 AXLE: 7295  
UWV: 8284 CCC: 1446 **F** 54 GAL **G** 45 GAL **B** 45 GAL



**29BHS**

LENGTH: 35' 5" WIDTH: 8' HEIGHT: 11' 2" HITCH: 1102 AXLE: 6708  
UWV: 7869 CCC: 2033 **F** 54 GAL **G** 45 GAL **B** 45 GAL

# Flagstaff Warranty. Our Promise.

FOR DETAILS ON FLAGSTAFF'S COMPLETE WARRANTY PROGRAM, SEE YOUR FLAGSTAFF DEALER.

When it comes to backing products with the same quality and commitment it does when it begins the manufacturing process, the only name you have to remember when you're looking for a recreational vehicle is Flagstaff. Flagstaff offers the following additional limited warranties to the original purchasers. Consult written warranty for details.

**1** Limited Lifetime roofing warranty.\*

\*Lifetime warranty is limited to original owner

**2** Two-year fiberglass warranty.

**3** Ten-year Torflex® axle warranty.

**4** One-year bumper to bumper warranty.

## Specification Definitions

**GVWR (Gross Vehicle Weight Rating):** is the maximum permissible weight of the unit when fully loaded. It includes all weights, inclusive of all fluids, cargo, optional equipment and accessories. For safety and product performance do NOT exceed the GVWR.

**GAWR (Gross Axle Weight Rating):** is the maximum permissible weight, including cargo, fluids, optional equipment and accessories that can be safely supported by a combination of all axles.


**UVW (Unloaded Vehicle Weight):**<sup>1</sup> is the typical weight of the unit as manufactured at the factory. It includes all weight at the unit's axle(s) and tongue or pin and LP Gas. The UVW does not include cargo, fresh potable water, additional optional equipment or dealer installed accessories.

**CCC (Cargo Carrying Capacity):**<sup>1</sup> is the amount of weight available for fresh potable water, cargo, additional optional equipment and accessories. CCC is equal to GVWR minus UVW. Available CCC should accommodate fresh potable water (8.3 IWW per gallon). Before filling the fresh water tank, empty the black and gray tanks to provide for more cargo capacity.

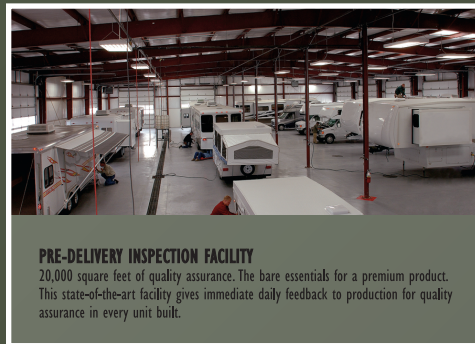
Each Forest River RV is weighed at the manufacturing facility prior to shipping. A label identifying the unloaded vehicle weight of the actual unit and the cargo carrying capacity is applied to every Forest River RV prior to leaving our facilities.

The load capacity of your unit is designated by weight, not by volume, so you cannot necessarily use all available space when loading your unit.

*All information contained in this brochure is believed to be accurate at the time of publication. However, during the model year, it may be necessary to make revisions and Forest River, Inc., reserves the right to make all such changes without notice, including prices, colors, materials, equipment and specifications as well as the addition of new models and the discontinuance of models shown in this brochure. Therefore, please consult with your Forest River dealer and confirm the existence of any materials, design or specifications that are material to your purchase decision. © 2023 Flagstaff RV, a Division of Forest River, Inc., a Berkshire Hathaway Company. All Rights Reserved.*

 02/26 Flagstaff

<sup>1</sup> Estimated Average based on standard build optional equipment



CUSTOMER SATISFACTION



[www.ForestRiverBuyLocal.com](http://www.ForestRiverBuyLocal.com)



RV WITH US



@FlagstaffRVs



FOREST RIVER OWNER'S GUIDE

Now you can have your Owner's Manual with you wherever you are. Download our FREE App from the App Store or Google Play and you'll have the information right at your fingertips.



YOUR **FLAGSTAFF** DEALER



Learn More  
Scan this barcode using a QR Reader on your smart phone to learn more about Forest River.



A Berkshire Hathaway company

# Flagstaff

201 WEST ELM MILLERSBURG, IN 46543  
[WWW.FORESTRIVERINC.COM/FLAGSTAFF](http://WWW.FORESTRIVERINC.COM/FLAGSTAFF)

574.642.2640

**FREE MEMBERSHIP**  
to Forest River Owners' Group

[www.forestriverfrog.com](http://www.forestriverfrog.com)

