

TIFFIN

2025

CLASS-A

BYWAY



What's New Summary - Byway

WHAT'S NEW

- FCCC Front Suspension Change to VFS
- Integrated Roof-Top HVAC Controls to Spyder System
- Integrated AGS Controls to Spyder System
- 7" Lite Spyder Main Touch Screen Upgrade
- Dish Receiver Box Removed when Satellite is Not Installed
- Change to Insignia Appliances with Exception of Refrigerator

- Change from Girard to Lippert Awnings
- Exterior TV Change from Standard to Optional
- "Built by Tiffin Motorhomes in Red Bay, AL" Sticker Added
- Exterior Ladder Standard
- New Generation 2 Paint Scheme
- Starlink® Prep at Sewer Board (Optional)

No Longer Available

- RoadWatch, ESC, & Adjustable Pedals
- Shadow Cabinets
- Battery Slide Tray
- Hydraulic Slide Tray
- Generation 1 Paint Scheme

Premium Paint System

The eight-step, full-body paint system features premium grade paints sealed with three layers of clear coat with ultraviolet protection. An additional layer of high-performance film protects the front of the coach and select areas.



G2 EURO BLUE



G2 FROSTED GRANITE



G2 SCARLET THUNDER



G2 NASA

Images shown are representations of paint layouts only and do not reflect all exterior features or options. Colors shown may slightly differ from colors on actual product. Initial MY2025 Model Change Plans. Subject to Change in Full Production

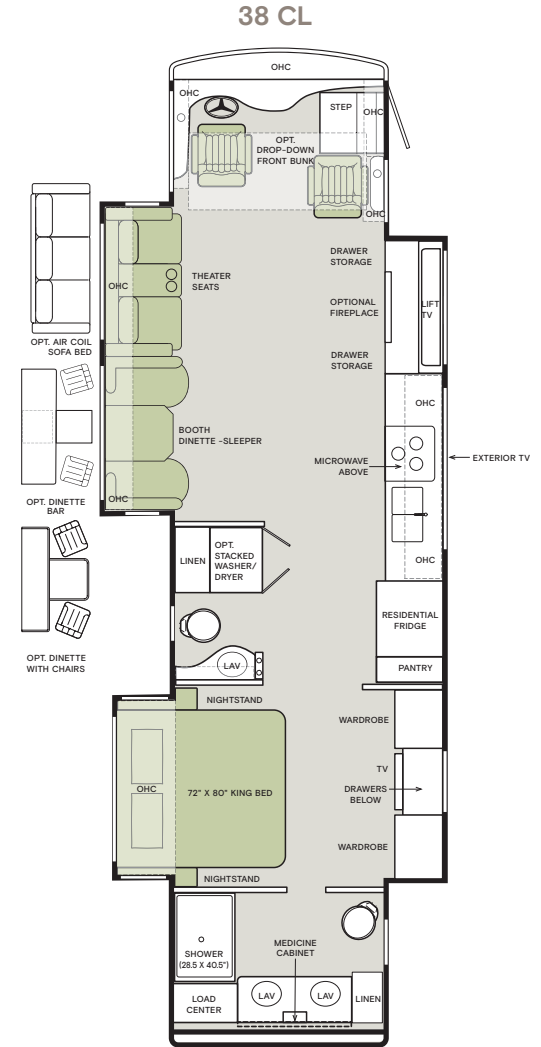
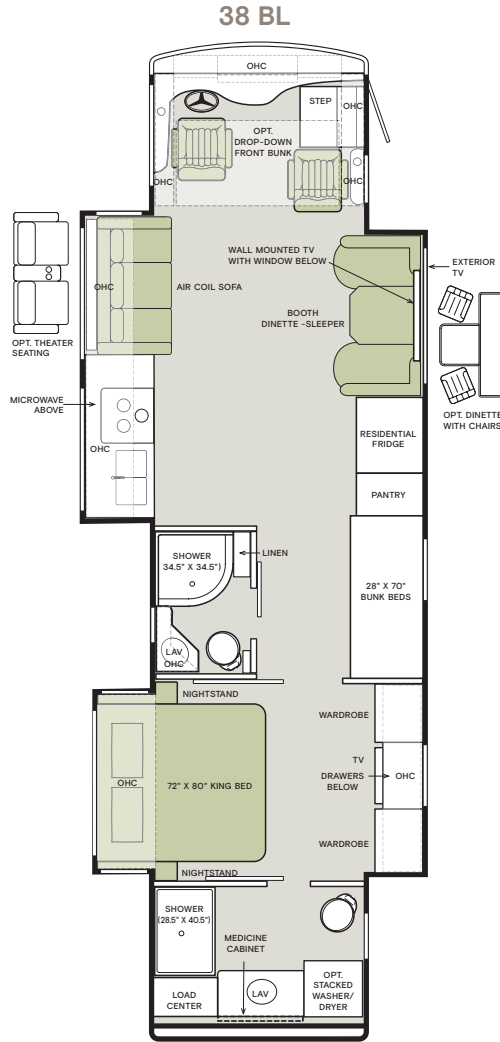
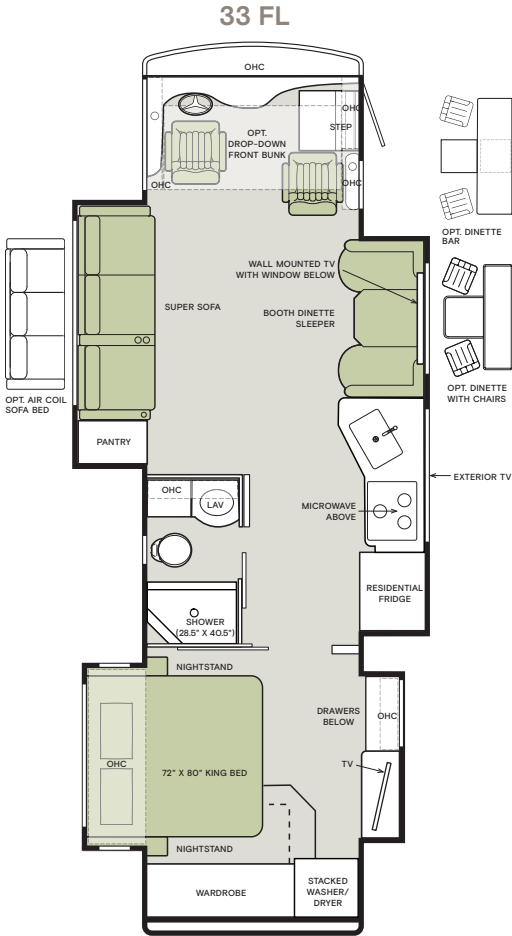
Floor Plans and Specifications

FLOOR PLAN	Overall Length (approx.) ¹	Wheel Base	Overall Width ¹	Overall Height	Minimum Garage Height	Interior Height	Interior Width	Square Footage (approx.) ²	Basement Storage (cubic feet, approx.)	GAWR-Front (pounds)	GAWR-Rear (pounds)	GVWR (pounds)	Maximum Trailer Weight (pounds) ³	Hitch Rating (pounds)	GCWR (pounds)
33 FL	35' 2"	198"	101"	12' 10"	14'	84"	96"	330	71	10,800	19,000	29,800	3,200	5,000	33,000
38 BL	39' 6"	252"	101"	12' 10"	14'	84"	96"	385	118	10,800	19,000	29,800	3,200	5,000	33,000
38 CL	39' 6"	252"	101"	12' 10"	14'	84"	96"	395	118	10,800	19,000	29,800	3,200	5,000	33,000

¹ The approximated coach width and length does not include side-view mirrors and rear ladders.

³ Maximum trailer weight is dependent on the loading and towing variables which include the GVWR, GAWR, and GCWR, as well as adequate trailer brakes.

² Square footage was calculated with the slide-outs fully extended.



If optional furniture combinations are selected, window locations may vary from diagram shown.

All options may not be available in every model. Because of progressive improvements and specifications, standard and optional equipment are subject to change without notice or obligation.

For a complete and up-to-date list of available options and specifications, visit tiffinmotorhomes.com.

Interior Décor

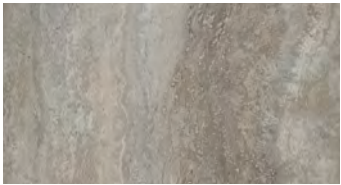
Make your experience on the road all your own. Express yourself by choosing from interior selections such as cabinet finishes and décor options for every part of your motorhome. In the 2025 Byway, you'll be able to travel in style no matter where your adventure takes you.



**MR. BOB TIFFIN
RECOMMENDS**
**MOONDANCE
DÉCOR PACKAGE
WITH SANDSTONE
CABINETS.**

FLOORING AND CABINET OPTIONS

OPTION 1



MONTEANO Luxury Vinyl Tile

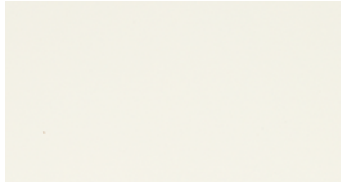


SANDSTONE

OPTION 2

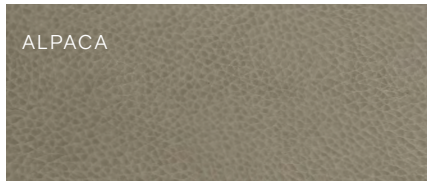


SEA GRASS Luxury Vinyl Tile



WHITE LINEN

MOONDANCE



ALPACA

FURNITURE



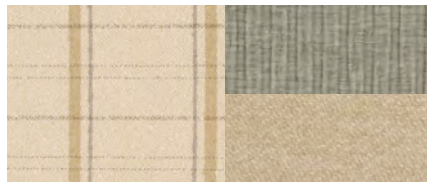
WINDOW TREATMENT



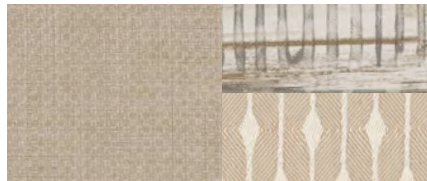
BACKSPLASH



COUNTERTOP

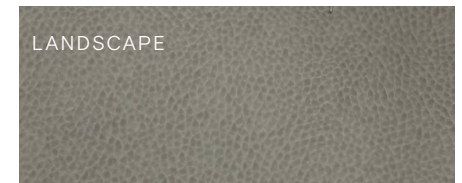


LIVING ROOM



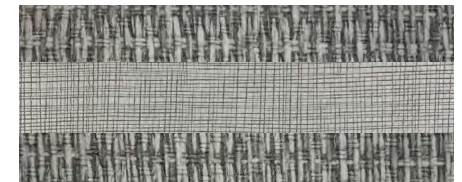
MASTER SUITE

IRON MOUNTAIN



LANDSCAPE

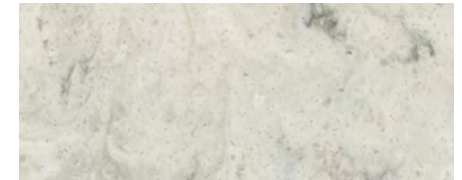
FURNITURE



WINDOW TREATMENT



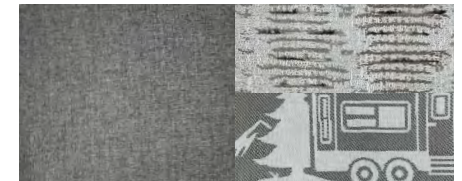
BACKSPLASH



COUNTERTOP



LIVING ROOM



MASTER SUITE

Images shown are representations of paint layouts only and do not reflect all exterior features or options. Colors shown may slightly differ from colors on actual product. Colors of interior decor options shown may vary from colors on actual product.

1

YEAR OR 12,000 MILES
LIMITED WARRANTY

3

YEAR DELAMINATION
LIMITED WARRANTY WITH
NO MILEAGE LIMITATION

5

YEAR CONSTRUCTION
LIMITED WARRANTY WITH
NO MILEAGE LIMITATION

1

YEAR COACH
ROADSIDE SERVICE

∞

ONGOING
CUSTOMER SUPPORT

FOR SALES CALL 256-356-8661 AND PARTS & SERVICE CALL 256-356-0261 OR VISIT TIFFINMOTORHOMES.COM

105 2ND ST NW RED BAY, AL 35582  



TIFFIN

MOTORHOMES

All trademarks and logos are owned or used under license by Tiffin Motor Homes, Inc. and include, but are not limited to: TIFFIN®, MANY ADVENTURES, ONE DREAM™, ALLEGRO®, ALLEGRO BREEZE®, ALLEGRO RED®, PHAETON®, ALLEGRO BUS®, ZEPHYR®, WAYFARER®, ROUGHING IT SMOOTHLY®, OPEN ROAD®, BYWAY™, and associated logos and emblems. Unauthorized use of any trademark of Tiffin Motor Homes, Inc. is strictly prohibited.

© Copyright 2024 Tiffin Motor Homes, Inc.

For all information concerning the limited warranty provided by Tiffin, please refer to the full written limited warranty set forth on the Tiffin website or held by our authorized dealerships. Please note, some interior furnishings not included. Revised: 6/11/2024