

2020

# PHAETON

CLASS A



TIFFIN









Clockwise from top: Cockpit; Dinette; PowerGlide Steering Wheel; Master Bed. All interiors shown are 40 IH with Sterling cabinets, Coastal Sand décor.

2020 PHAETON

# COMMANDING LUXURY

From the moment you set foot in the 2020 Phaeton®, you'll understand why it has been a customer favorite for more than a decade. Its newly reimagined front and rear caps give style and performance new meaning. The Phaeton is incredibly luxurious, offering an abundance of upscale amenities as standard features. Available in a multitude of floor plans, finishes, and décors, the Phaeton pampers you with an extraordinary level of elegance and comfort. For those who want to travel in style, this coach is for you.





## Main Living Area

The welcoming living area invites relaxation, with upscale furnishings and tasteful neutral tones to complement your preferred décor. Then make it yours with six floor plans, three new décor packages, and two new floor tile options. Innovative engineering adds convenience by providing an electric command center that controls features throughout the coach. A Lift TV console that keeps the TV hidden when not in use is also available on select floor plans.

**Left to right:** Living Area 40 IH with Sterling cabinets, Coastal Sand décor, Living Area 40 QBH with Amber Glazed cabinets, Trend Beige décor.







Top to bottom: Kitchen; Driver Side Dinette; Passenger Side Theater Seats.



The cool brightness of LED lighting illuminates interiors, using a fraction of the energy of incandescent bulbs to preserve the coach's battery life.





## Master Suite

A queen-sized memory foam mattress offers a restful landing place, or upgrade to a king-sized bed for more room. Entertainment is everywhere with its surround sound, TV, and DVD player. Belongings are easily organized with a chest of drawers, laundry hamper, large closet, and under bed storage. The adjoining master bath now features revised doors for easy entrance.

Left to right: 40 IH Bedroom Storage with Sterling cabinets; Optional King Bed, 40 QBH with Amber Glazed cabinets, Trend Beige décor.







Tiffin-crafted solid wood cabinets, drawers, and closets add more storage than many larger-sized models.



Top to bottom: 40 IH Bathroom; 40 QBH Bathroom.





Reflecting over four decades of innovation, Tiffin's exclusive, custom-built PowerGlide Chassis included on the 40 IH and 44 OH demonstrates our ongoing commitment to delivering a motorhome experience that's precisely engineered for durability, reliability, performance, and control wherever your journey takes you.

#### MULTIPLEX WIRING WITH DIAGNOSTICS

The PowerGlide's multiplexed electrical system, with auto-reset fuses and relays, uses less wiring and increases reliability, efficiency, and flexibility.

#### DYNAMOMETER TESTING

Our dynamometer testing simulates full power road testing, enabling us to better assess engine performance, cooling system function, and instrumentation.

#### POWERGLIDE CHASSIS WARRANTY

The PowerGlide carries a Tiffin-backed limited warranty for three years or 50,000 miles against defects in materials and workmanship.

#### HUCK-BOLTED CONSTRUCTION

Huck Bolts are precision engineered two-piece fasteners. Huck Bolts are vibration resistant and provide direct metal to metal contact when installed.



## Premium Paint System

Our eight-step full-body paint system features premium grade paints sealed with three layers of superclear coat with ultraviolet protection. An additional layer of scratch-resistant plastic coating protects the front of the coach, stairwell, and entry door lock.

## GENERATION 9



G9 EURO BLUE



G9 FIRE OPAL



G9 FROSTED GRANITE



G9 NASA



G9 SUNLIT SAND



G9 WHITE MAHOGANY



G9 MAROON CORAL

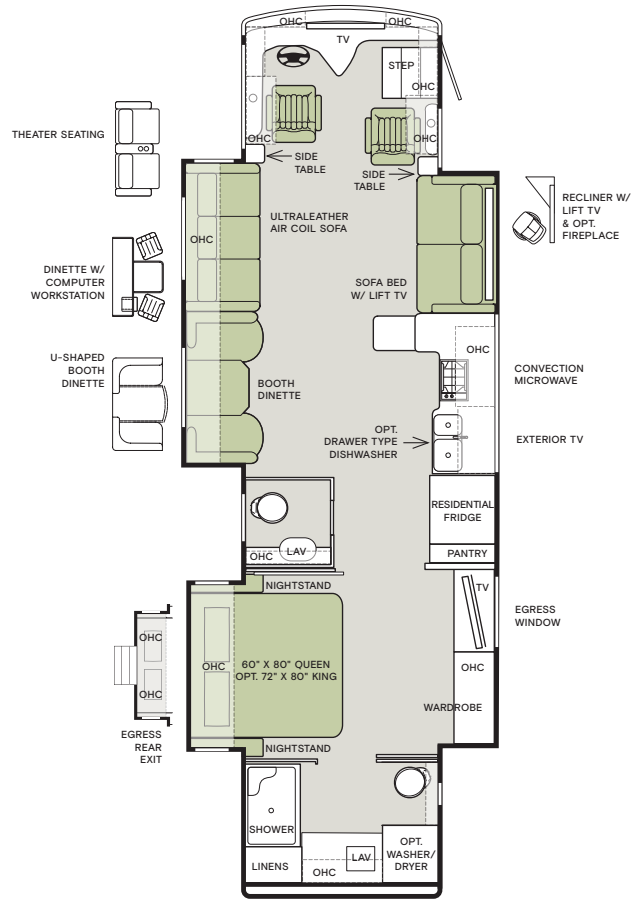


## Floor Plans

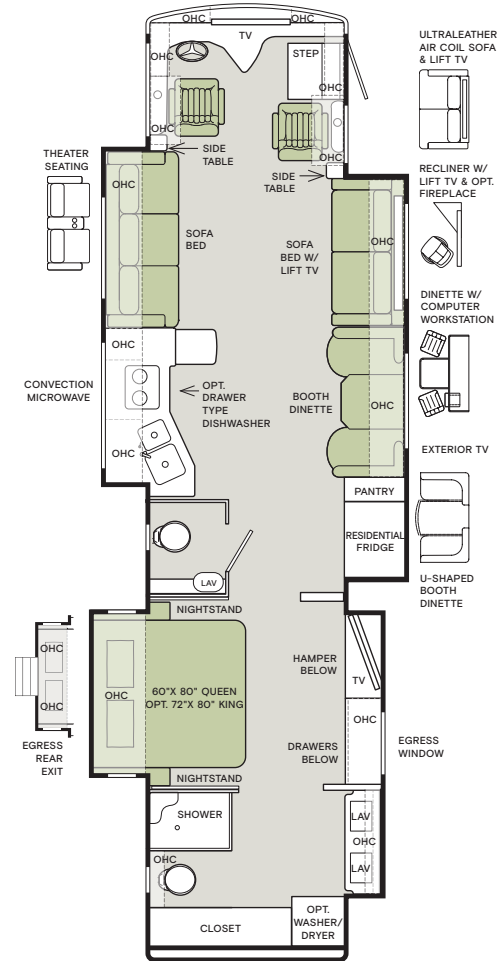


The design of every Phaeton floor plan must meet four essential criteria: Maximum space, Optimal organization, Relaxation plus, and Elegant atmosphere. Tiffin's MORE Plans offer your family the most comfortable layout for life on the road.

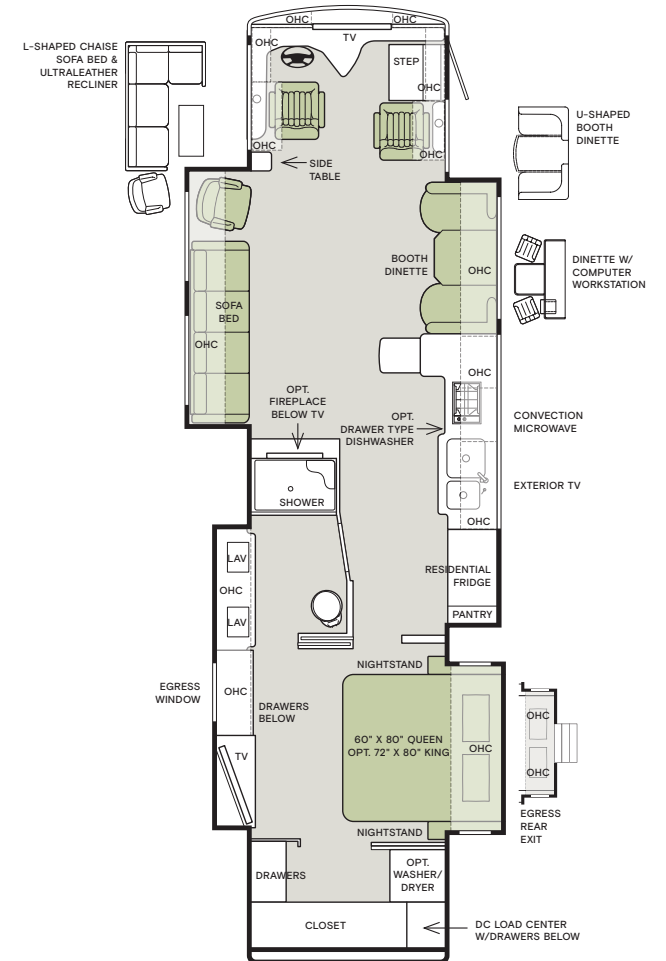
### 37 BH



### 40 IH



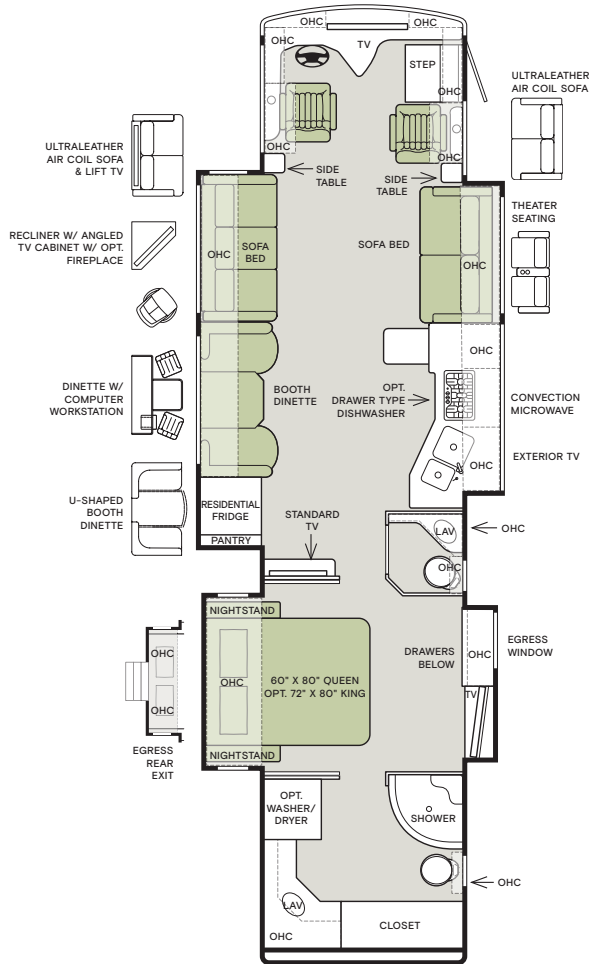
### 40 AH



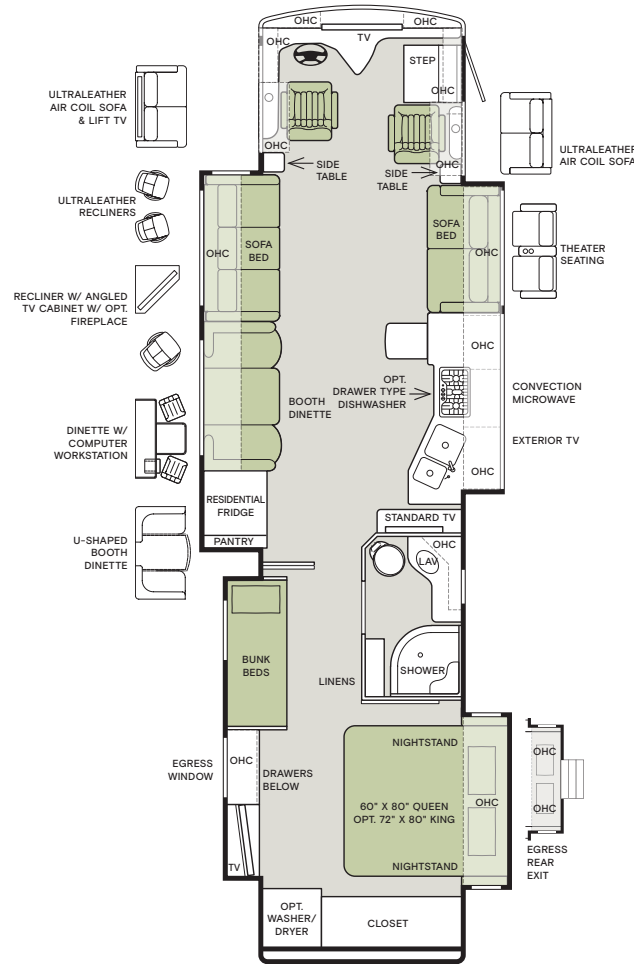
If optional furniture combinations are selected, window locations may vary from diagram shown. All options may not be available in every model. Because of progressive improvements and specifications, standard and optional equipment are subject to change without notice or obligation. For a complete and up-to-date list of available options and specifications, visit [tiffinmotorhomes.com](http://tiffinmotorhomes.com).



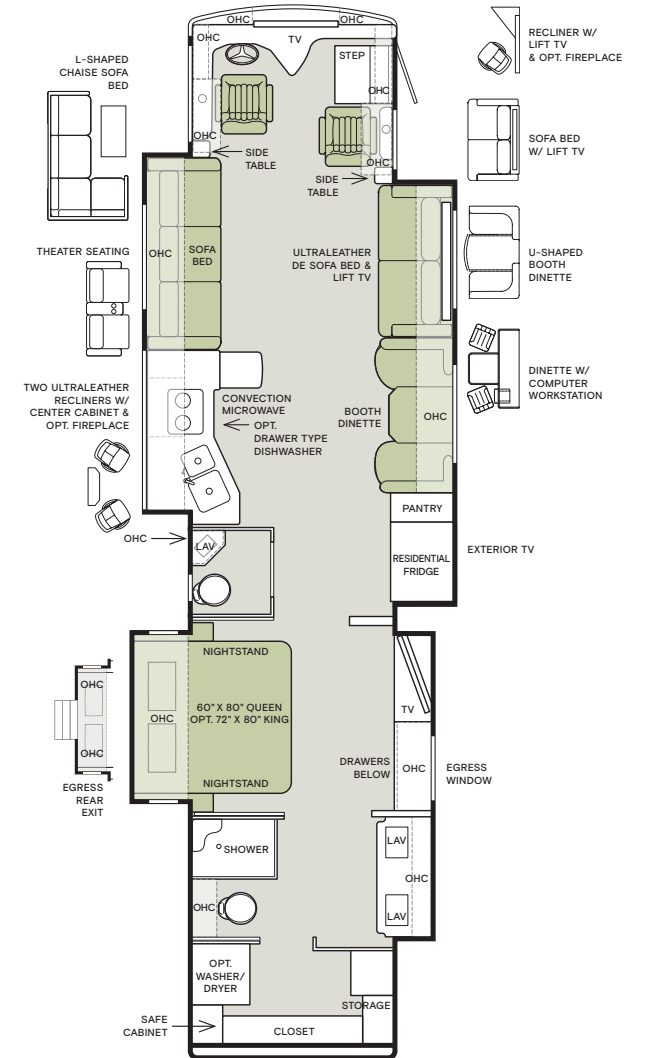
### 40 QBH



### 40 QKH



### 44 OH





## Interior Décor

Make your experience on the road all your own. Express yourself by choosing the interior appointments such as cabinet finishes, flooring, and décor ensembles for every part of your motorhome. In the 2020 Phaeton, you'll be able to go in style no matter where you go.

### CABINETS



MOCHA

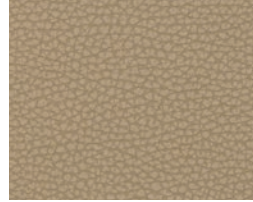


STERLING\*

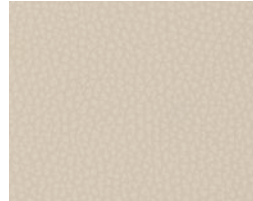


AMBER GLAZED

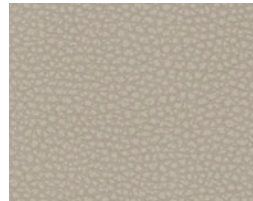
### ULTRALEATHER



BELGIAN



WHITE MAPLE

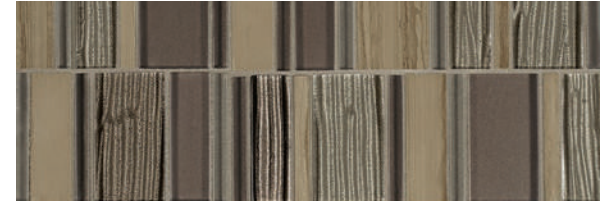


COCOON

### ARTISTS TAUPE



WINDOW TREATMENT



BACKSPLASH



COUNTERTOP



LIVING ROOM



MASTER SUITE

### FLOOR TILE



NAVARO (S)



WINTER SPRUCE (O)

Because of progressive improvements and specifications, standard and optional equipment are subject to change without notice or obligation. For a complete and up-to-date list of available options and specifications, visit [tiffinmotorhomes.com](http://tiffinmotorhomes.com).

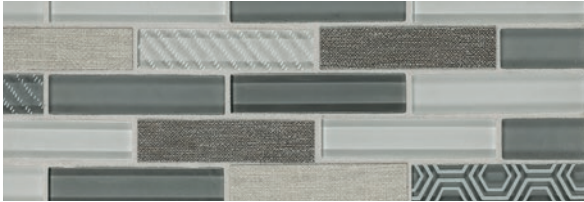
\*Requires Luster Sheen



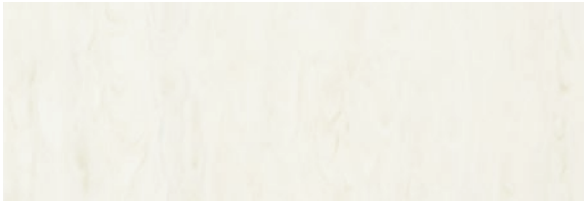
COASTAL SAND



WINDOW TREATMENT



BACKSPLASH



COUNTERTOP



LIVING ROOM

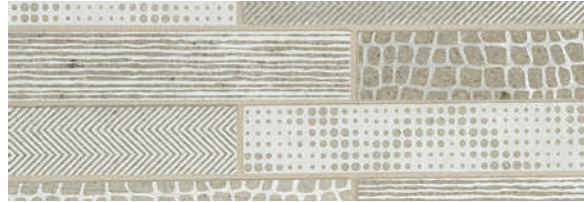


MASTER SUITE

TREND BEIGE



WINDOW TREATMENT



BACKSPLASH



COUNTERTOP



LIVING ROOM



MASTER SUITE



## Specifications

### AUTOMOTIVE

- Air Ride 4 Air Bags Up to 40' 6 Air Bags on Tag Axle Units
- Four Aluminum Wheels (6 with Tag Axle)
- Exhaust Brake on 380 HP Freightliner Chassis
- Compression Brake on all PowerGlide Chassis
- Adjustable Accelerator and Brake Pedals
- Allison 3000 MH 6-speed Automatic Transmission
- Air Brakes with Automatic Slack Adjusters and ABS
- Fog Lights
- Daytime Running Lights
- 18" Smart Wheel Steering Wheel
- Cruise Control
- Emergency Start Switch

CHASSIS OPTIONS:	37 BH	40 AH	40 IH	40 QBH	40 QKH	44 OH
Freightliner® Cummins ISL 380 HP/1150 lb Torque <sup>1</sup>	S	S	NA	S	S	NA
PowerGlide ISL 450 HP/1250 lb Torque with Independent Front Suspension	NA	NA	O	NA	NA	S
PowerGlide ISL 380 HP/1150 lb Torque with Independent Front Suspension	NA	NA	S	NA	NA	NA
GVWR (lb)	38,320	38,320	39,600	38,320	38,320	45,600
GAWR – Front (lb)	14,320	14,320	15,600	14,320	14,320	15,600
GAWR – Rear (lb)	24,000	24,000	24,000	24,000	24,000	20,000
GAWR – Tag Axle (lb)	NA	NA	NA	NA	NA	10,000
GCWR (lb)	48,320	48,320	49,600	48,320	48,320	55,600
Alternator Amps	160	160	210	160	160	210
Fuel Tank (gal.) – Dual Fuel Fill	100	100	100	100	100	100
DEF Tank <sup>2</sup> (gal.)	13	13	10	13	13	10

<sup>1</sup> Only the Freightliner® warranty will apply.

<sup>2</sup> Diesel Exhaust Fluid (DEF) is the active component used in Selective Catalytic Reduction (SCR) engines to reduce nitrogen oxide emissions by 90% to meet EPA standards.

WEIGHTS AND MEASURES	37 BH	40 AH	40 IH	40 QBH	40 QKH	44 OH
Overall Length (approximately <sup>3</sup> )	38' 2"	41' 4"	41' 4"	41' 4"	41' 4"	45'
Overall Height with Roof Air (max.)	12' 7"	12' 7"	13' 2"	12' 7"	12' 7"	13' 2"
Interior Height	83"	83"	83"	83"	83"	83"
Overall Width <sup>3</sup>	101"	101"	101"	101"	101"	101"
Interior Width	96"	96"	96"	96"	96"	96"
Fresh Water (gal.)	90	90	100	90	90	100
Black Water (gal.)	50	50	55	50	50	55
Grey Water (gal.)	66	66	100	66	66	100
LPG Tank (gal.; can only be filled to 80% capacity)	35.7	35.7	35.7	35.7	35.7	All Electric
Basement Storage (cubic ft – app.)	122	157	232	157	157	253
Wheel Base	234"	266"	266"	266"	266"	310"
Tire Size	275/80 R22.5	275/80 R22.5	295/80 R22.5	275/80 R22.5	275/80 R22.5	295/80 R22.5
Minimum Garage Height	14'	14'	14'	14'	14'	14'
Hitch Rating (lb) <sup>4</sup>	10,000	10,000	10,000	10,000	10,000	10,000

<sup>3</sup> The approximated coach width and length does not include side-view mirrors and rear ladders.

<sup>4</sup> Maximum Trailer Weight is dependent on the loading and towing variables which includes the GVWR, GAWR, and GCWR, as well as adequate trailer brakes.

### EXTERIOR

- Hydraulic Automatic Leveling Jacks
- Large Tinted One-piece Windshield
- Heated Power Mirrors with Integrated Cameras
- Single Motor Intermittent Wiper
- Lockable Swing-out Storage Doors with Gas Shocks
- Window Awning Package (2 Windows)
- Full-body Paint with Protective Film on Front Cap
- Remote Locking System for Entry Door
- Heated Water and Holding Tank Compartments
- Chrome Handles on Compartment Doors
- Deadbolt Front Entrance Door
- Double Electric Step
- Flush Mounted and Painted-frame Dual Pane Windows
- Exterior Patio LED Light
- Power Door Awning
- Metal-wrapped Power Patio Awning
- Motion Sensor Lighting for Exterior Storage
- 10.0 kw Onan® Manual Slide-out Generator
- Roof Ladder
- Electric Hose Reel
- Electric Power Cord Reel
- Fiberglass Front and Rear Caps
- Docking Lights
- Six 6 V House Batteries
- Black Tank Flush System
- Water Filter
- Custom Mud Flap
- Undercoating
- Dual Fuel Fills
- 110 V Exterior Receptacle
- Digital TV Antenna
- Back-up Camera
- Cable-ready TV Hook-up
- Gravity Water Fill
- 2000 Watt Inverter with 100 Amp Converter and Transfer Switching
- Air Horns
- Exterior Flat Panel TV (Includes Sound Bar)
- Solid Non-opening Window on Passenger Side

EXTERIOR OPTIONS:	37 BH	40 AH	40 IH	40 QBH	40 QKH	44 OH
One Storage Compartment Slide-out Tray	O	O	O	O	O	O
Two Storage Compartment Slide-out Trays	NA	O	O	O	O	O
In-motion Satellite Dish <sup>5</sup>	O	O	O	O	O	O
Pre-wired for Winegard® TRAV'LER	O	O	O	O	O	O
Winegard Connect™	O	O	O	O	O	O
Three Low Profile Roof ACs with Heat Pumps	S	S	S	S	S	S
Aqua-Hot™ and All Electric Unit	O	O	O	O	O	S
Prep for Solar Panels	O	O	O	O	O	O
Three Solar Panels	O	O	O	O	O	O
Extended Cycle Batteries	O	O	O	O	O	O

<sup>5</sup> High-definition programming is not available on a domed satellite antenna unless you subscribe to DISH Network®.

### COCKPIT

- Ultraleather Power Driver and Passenger Seats
- Contemporary Wraparound Dash
- Courtesy Drawer in Step Well
- Courtesy Light in Step Well
- Dual Dash Fans
- One Drawer in Dash
- Dual 12 V Dash Receptacle
- Single CD Player and AM/FM Stereo
- USB Dash Receptacle
- Power Solar and Privacy Windshield Shade
- Driver/Passenger Side Window Solar and Privacy Shades
- Color Rear Vision Monitor System with Side-view Cameras Activated by Turn Signals
- Satellite-ready Radio Includes Receiver and Antenna (requires subscription)
- Integrated Seatbelt Brackets
- Fire Extinguisher
- Front Overhead Flat Panel TV

COCKPIT OPTIONS:	37 BH	40 AH	40 IH	40 QBH	40 QKH	44 OH
In-dash Navigation System	O	O	O	O	O	O
Mobileye Collision Avoidance System	O	O	O	O	O	O
Ultraleather Power Passenger Seat with Footrest	S	S	S	S	S	S



**INTERIOR**

- Soft Touch Vinyl Ceiling with Trey Ceiling in Living Area
- Treated Carpet in Slide-outs
- Two Ducted Furnaces
- Solid Wood Cabinet Fascias and Doors with Concealed Hinges
- Complete Cable Wiring (Interfacing with Surround Sound and Satellite System)
- Home Theater Sound System with Concealed Speakers (Living Room)
- DISH® Network Receiver (requires subscription)
- Solar and Privacy Shades
- LED Lighting
- Fan-Tastic® Power Roof Vents
- Tank Level Monitor System
- Smoke Detector
- Electric Step Well Cover
- Wardrobe with Automatic Light
- House Battery Disconnect Switch
- Extraordinaire™ AC System
- Central Vacuum Cleaner
- Optional Stacked Washer/Dryer

	AVAILABLE OPTIONS:	37 BH	40 AH	40 IH	40 QBH	40 QKH	44 OH
<b>Cabinets</b>	Amber Glazed Solid Cabinet Doors and Drawer Fronts	O	O	O	O	O	O
	Mocha Solid Cabinet Doors and Drawer Fronts	O	O	O	O	O	O
	Sterling <sup>6</sup>	O	O	O	O	O	O
<b>Fabric Suites</b>	Artist Taupe	O	O	O	O	O	O
	Coastal Sand	O	O	O	O	O	O
	Trend Beige	O	O	O	O	O	O
<b>Ultraleather</b>	Belgian	O	O	O	O	O	O
	Cocoon	O	O	O	O	O	O
	White Maple	O	O	O	O	O	O
<b>Floor Tiles</b>	Navarro	S	S	S	S	S	S
	Season Wood Winter Spruce	O	O	O	O	O	O
	Heated Tile Floor	O	O	O	O	O	O

<sup>6</sup> Requires Luster Sheen.

**KITCHEN**

- Solid Surface Countertop with Stainless Steel Sink
- Solid Surface Sink Covers
- Expand-an-island
- Single Lever Sink Faucet with Sprayer
- Stainless Steel Microwave/Convection Oven
- Galley Splash Guards
- Stainless Steel Residential Refrigerator
- 3-burner Cooktop with Convection Microwave
- Panoramic Galley Window

KITCHEN OPTIONS:	37 BH	40 AH	40 IH	40 QBH	40 QKH	44 OH
Dishwasher	O	O	O	O	O	O

**BATHROOM**

- Medicine Cabinet with Vanity Lights
- Skylight and LED Light in Shower
- Solid Surface Vanity Top and Porcelain Bowl
- Solid Wood Custom Privacy Door
- Truma Gas Continuous Water Heater
- 3-speed Fan-Tastic® Fan

LIVING AREA/DINETTE OPTIONS:	37 BH	40 AH	40 IH	40 QBH	40 QKH	44 OH
Ultraleather Booth Dinette/Sleeper on Passenger Side	NA	S	S	NA	NA	S
Dinette with Computer Workstation on Passenger Side	NA	O	O	NA	NA	O
Ultraleather U-shaped Dinette (Non-sleeper) on Passenger Side	NA	O	O	NA	NA	O
Ultraleather Booth Dinette/Sleeper on Driver Side	S	NA	NA	S	S	NA
Dinette with Computer Workstation on Driver Side	O	NA	NA	O	O	NA
Ultraleather U-shaped Dinette (Non-sleeper) on Driver Side	O	NA	NA	O	O	NA
Ultraleather DE Sofa/Bed on Passenger Side	NA	NA	NA	S	S	NA
Ultraleather DE Sofa/Bed and Lift TV on Passenger Side	S	NA	O	NA	NA	O
Ultraleather Recliner and Lift TV on Passenger Side	O	NA	O	NA	NA	NA
Ultraleather Air Coil Sofa on Passenger Side	NA	NA	NA	O	O	NA
Ultraleather Air Coil Sofa on Driver Side	S	NA	O	S	S	O
Ultraleather Recliner with Angled TV Cabinet on Driver Side	NA	NA	NA	O	O	NA
Ultraleather Air Coil Sofa and Lift TV on Passenger Side	NA	NA	O	NA	NA	S
Ultraleather Air Coil Sofa/Bed and Lift TV on Driver Side	NA	NA	NA	O	O	NA
Ultraleather Air Coil Sofa and Ultraleather Recliner on Driver Side	NA	S	NA	NA	NA	NA
Theater Seating on Driver Side	O	NA	O	NA	NA	O
Theater Seating on Passenger Side	NA	NA	NA	O	O	NA
Two Ultraleather Recliners with Center Cabinet on Driver Side	NA	NA	NA	NA	NA	O
Two Ultraleather Recliners on Driver Side	NA	NA	NA	NA	O	NA
Ultraleather L-shaped Sofa on Driver Side	NA	NA	NA	NA	NA	O
Ultraleather L-shaped Sofa and Ultraleather Recliner on Driver Side	NA	O	NA	NA	NA	NA
Fireplace with Two Ultraleather Recliners on Driver Side	NA	NA	NA	NA	NA	O
Fireplace with Ultraleather Recliner with Angled TV Cabinet on Driver Side	NA	NA	NA	O	O	NA
Fireplace with Ultraleather Recliner with Lift TV on Passenger Side	O	NA	O	NA	NA	NA
Fireplace Below TV	NA	O	NA	NA	NA	NA

Note: Cannot option Air Coil Sofa on Driver Side and Passenger Side. Certain variations of furniture combinations will affect sleeping capacity. Certain variations will restrict walkway space.

**BEDROOM**

- Bed Comforter with Throw Pillows
- DVD Player in Bedroom with Surround Sound
- Under Bed Storage
- Memory Foam Queen Mattress
- Ceiling Fan
- Flat Panel TV
- Carbon Monoxide Detector
- LPG Leak Detector
- Chest of Drawers with Laundry Hamper

BEDROOM OPTIONS:	37 BH	40 AH	40 IH	40 QBH	40 QKH	44 OH
Bunk Beds with Convertible Wardrobe	NA	NA	NA	NA	S	NA
Sleep Number Mattress – Queen (60" x 80")	O	O	O	O	O	O
Sleep Number Mattress – King (72" x 80")	O	O	O	O	O	O
Memory Foam King Mattress (72" x 80")	O	O	O	O	O	O
Safe	O	O	O	O	O	O
Egress Rear Exit	O	O	O	O	O	O





1

YEAR\*  
LIMITED WARRANTY

5

YEAR\*\* DELAMINATION  
LIMITED WARRANTY

10

YEAR\*\* CONSTRUCTION  
LIMITED WARRANTY

1

YEAR COACH  
ROADSIDE SERVICE

∞

ONGOING  
CUSTOMER SUPPORT

©2020 Tiffin Motorhomes, Inc. Allegro®, Allegro Breeze®, Allegro RED®, Phaeton®, Allegro Bus®, Zephyr®, Wayfarer®, Roughing It Smoothly®, Open Road®, PowerGlide®, and Pusher® are registered trademarks of Tiffin Motorhomes, Inc. All rights reserved.  
For all information concerning the limited warranty provided by Tiffin, please refer to the full written limited warranty set forth on the Tiffin website or held by our authorized dealerships. Please note, some interior furnishings not included.  
\* or 12,000 miles. \*\* Or 50,000 miles.

FOR PARTS & SERVICE CALL 256.356.0261 OR VISIT [TIFFINMOTORHOMES.COM](http://TIFFINMOTORHOMES.COM)

105 2ND ST NW RED BAY, AL 35582 [f](#) [t](#) [i](#) [p](#)