

HIDEOUT

HIDEOUT LHS HORNET

TRAVEL TRAILERS • FIFTH WHEELS



 **Keystone RV
Company**



EASTERN EDITION

A sepia-toned landscape photograph of a mountain valley. In the foreground, a calm lake reflects the sky. A large, leafless tree stands on the right bank. In the background, snow-capped mountains rise under a cloudy sky. The overall tone is warm and nostalgic.

WWW.KEYSTONERV.COM/HIDEOUT

Luxury

COMES STANDARD

COMFORT AND LUXURY FOR THE WHOLE FAMILY



HIDEOUT LUXURY TRAVEL TRAILERS

With many new upscale luxury features inside and out the Hideout is more than just a travel trailer. Packed full of fun features the Hideout is the perfect choice for your family.



PGS. 4-12 ::::::::::



HIDEOUT LHS SERIES TRAVEL TRAILERS

When it comes to value, comfort and endless standard features Hideout has you covered. Get the new high-end look without the high-end price tag with Hideout's new LHS Series!



PGS. 13-16 ::::::::::



HORNET PLATINUM FIFTH WHEELS

Want high-profile features without the high profile price? Step out of the ordinary and into a new Hornet Platinum and we bet you'll have a hard time leaving.



PGS. 17-19 ::::::::::



HIDEOUT

38FDDS SHOWN IN
SILVER BIRCH DECOR

HIDEOUT LUXURY TRAVEL TRAILERS



Hideout's spacious living room comes equipped to meet the needs of any sized family. So book your next get-away and invite those friends you never had room for!

OPTIONAL TRI-FOLD SLEEPER SOFA



31RBD5 SHOWN IN
SILVER BIRCH DECOR



With a unique lineup of floorplans and loaded with standard features, you are sure to have a great place to entertain. Hideout's residential style interior will offer you a home away from home.



30RKD5 SHOWN IN
MAPLECREST DECOR



WARDROBE SLIDE IN THE
28RLD5, 30FKD5, 30RKD5

31RBDS BUNKROOM



FULLY FUNCTIONAL
OUTDOOR KITCHEN
(AVAILABLE ON HIDEOUT MODELS 27RBS, 31RBDS)

OUTDOOR KITCHEN

HIDEOUT LUXURY FEATURES



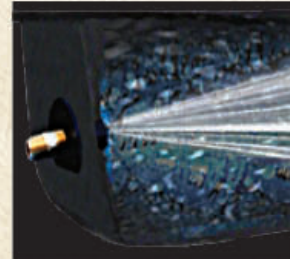
NIGHT SHADES IN
LIVING ROOM



FLAT PANEL TV



JENSEN CD/DVD
PLAYER



BLACK TANK FLUSH



XL ENTRY ASSIST
HANDLE



POCKET DOORS IN
BEDROOM



KITCHEN COUNTERTOP
EXTENSION



INTERIOR TV BRACKET
W/DISCONNECT FOR
EXTERIOR TV HOOKUP



EXTERIOR TV HOOKUP/
CABLE AND BRACKET



CENTRAL CONTROL
PANEL



ADJUSTABLE POWER
AWNING



HIDDEN LAUNDRY
CHUTE

HIDEOUT LUXURY CONSTRUCTION

- | | | |
|----------------------------------------|---------------------------------|----------------------------------------------|
| 1 One Piece I-Beam Powder Coated Frame | 9 Electric Color Matched Awning | 17 Radius Skirting |
| 2 Walkable Crowned Roof | 10 R-7 Insulation Throughout | 18 Easy Lube Axles |
| 3 Hurricane Strap Reinforcement | 11 Dual Battery Trays | 19 0.24 Aluminum Baked Enamel Siding |
| 4 Oversized Pass Through Storage | 12 XL Entry Assist Handle | 20 Black Framed, Tinted Safety Glass Windows |
| 5 Diamond Plate Front Protector | 13 5/8" Seamless Floor Decking | 21 Rain Gutter with Down Spouts |
| 6 One Piece Rubber Roof | 14 E-Coated Wheels | 22 Fender Skirts |
| 7 3/8" OSB Roof Decking | 15 Four Stage Slide Room Seals | 23 13,500 BTU Ducted Air Conditioner |
| 8 Twin 20 Lb. LP Bottles | 16 Easy Lift Steps | 24 Bumper Sewer Hose Storage |
| | | 25 Exterior TV Mount |

ALL OF YOUR
OUTDOOR KITCHEN
NEEDS ARE CLOSE
AT HAND



OUTDOOR AND CAMP
KITCHEN FEATURES
ARE NOT AVAILABLE
ON ALL MODELS

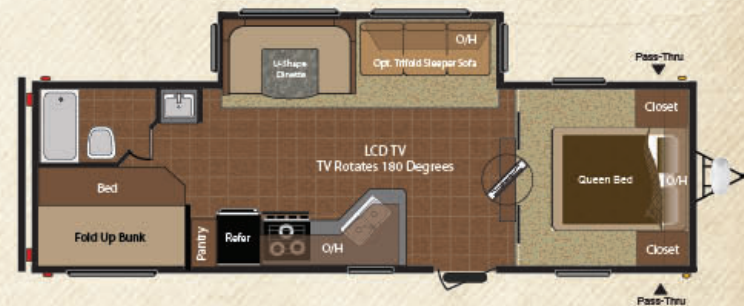
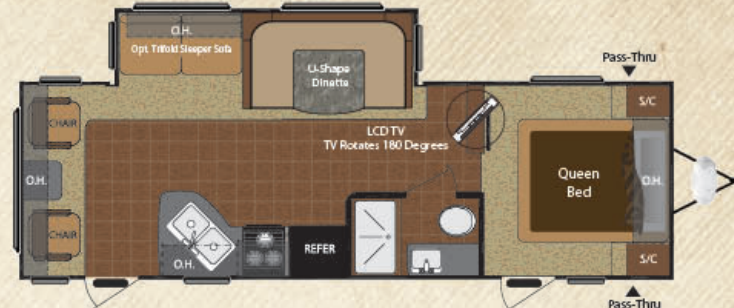


SCAN HERE
TO TAKE A 360° INTERIOR VIRTUAL
TOUR OF THE HIDEOUT TRAVEL TRAILER.
MORE VIRTUAL TOURS ARE AVAILABLE
AT KEYSTONERV.COM

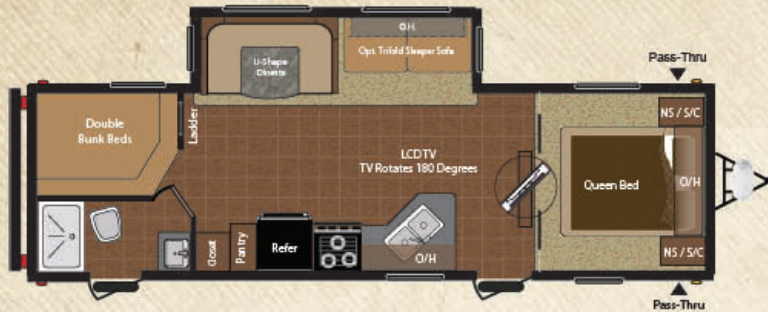


Luxury
COMES STANDARD

HIDEOUT LUXURY FLOORPLANS



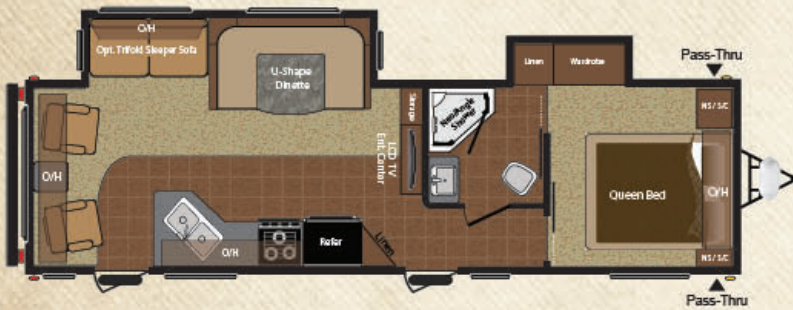
HIDEOUT LUXURY FLOORPLANS



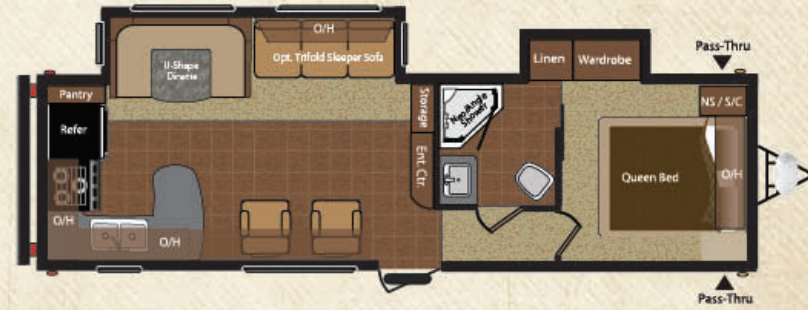
28BHS
SHIPPING WEIGHT: 6726



30FKDS
SHIPPING WEIGHT: 7350



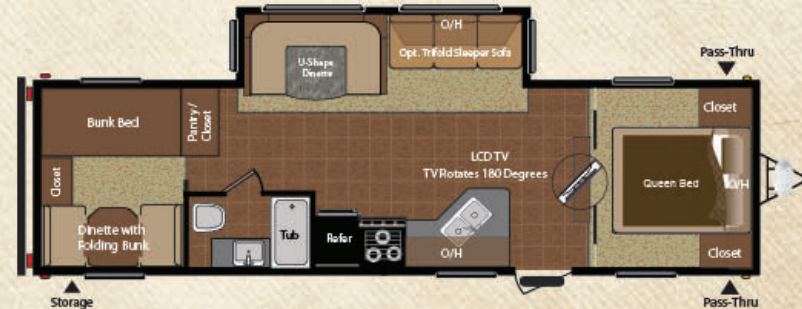
28RLDS
SHIPPING WEIGHT: 7490



30RKDS
SHIPPING WEIGHT: 7440



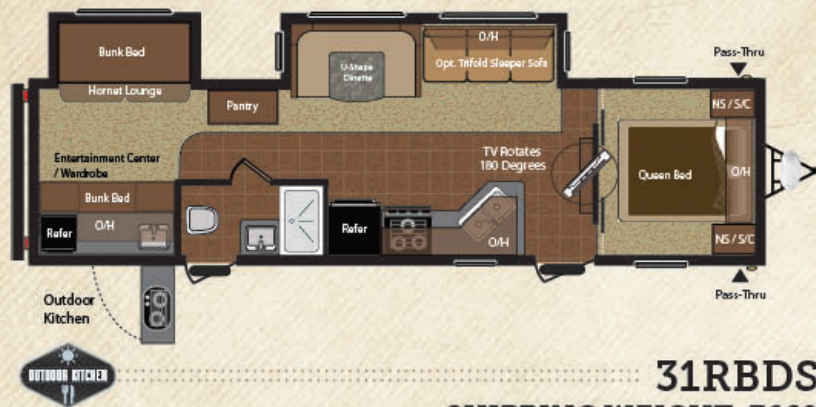
29BHS
SHIPPING WEIGHT: 7203



31BHS
SHIPPING WEIGHT: 6912



HIDEOUT LUXURY FLOORPLANS



31RBDS
SHIPPING WEIGHT: 7660



31RBTS
SHIPPING WEIGHT: 8140



360° INTERIOR VIRTUAL TOURS
AVAILABLE AT KEYSTONERV.COM

VISIT OUR ALL NEW WEBSITE TO VIEW INTERIOR
PHOTOS & MUCH MORE AT WWW.KEYSTONERV.COM



HIDEOUT LUXURY SPECIFICATIONS

MODEL	23RB	25RKS	26RB	26RLS	27DBS	27RBS	28BHS	28RLDS	29BHS	30FKDS	30RKDS	31BHS	31RBDS	31RBTS	38BHS	38FDDS	38FQDS
SHIPPING WEIGHT	4859	6053	5235	6334	6374	6611	6726	7490	7203	7350	7440	6912	7660	8140	8420	8340	8190
CARRYING CAPACITY	2666	1647	2365	1501	1566	2689	2969	2445	2502	2620	2315	2643	2005	1700	1590	1660	1710
HITCH WEIGHT	525	700	605	835	940	860	895	1135	905	1170	955	755	865	1040	1210	1205	1100
EXTERIOR LENGTH*	27' 1"	29' 8"	29' 11"	29' 11"	31' 10"	31' 3"	32' 3"	33' 2"	33' 11"	33' 2"	33' 3"	33' 11"	35' 8"	36' 4"	39' 10"	39' 11"	39' 11"
EXT HEIGHT	10' 3"	11' 0"	10' 3"	11' 0"	11' 0"	11' 3"	11' 0"	11' 2"	11' 2"	11' 2"	11' 2"	11' 2"	11' 2"	11' 2"	11' 5"	11' 2"	11' 2"
FRESH WATER	45	45	45	45	45	45	45	45	45	45	45	45	45	45	45	45	45
WASTE WATER	38	38	32	38	32	38	38	38	38	38	38	38	38	38	38	38	38
GREY WATER	38	70	38	32	38	32	70	76	38	76	76	38	38	38	38	38	38
LPG CAPACITY	40	40	40	40	40	40	40	40	40	40	40	40	40	40	40	40	40

DISCLAIMER: Product information is as accurate as possible as of the date of publication of this brochure. All features, floor plans, and specifications in this brochure are subject to change without notice. Please also consult Keystone's web site at www.keystonerv.com for more current product information and specifications. Tow Vehicle Disclaimer: CAUTION: Owners of Keystone recreational vehicles are solely responsible for the selection and proper use of tow vehicles. All customers should consult with a motor vehicle manufacturer or their dealer concerning the purchase and use of suitable tow vehicles for Keystone products. Keystone disclaims any liability or damages suffered as a result of the selection, operation, use or misuse of a tow vehicle. KEYSTONE'S LIMITED WARRANTY DOES NOT COVER DAMAGE TO THE RECREATIONAL VEHICLE OR THE TOW VEHICLE AS A RESULT OF THE SELECTION, OPERATION, USE OR MISUSE OF THE TOW VEHICLE. *Length is defined as the distance from the centerline of hitch pin/coupler to rear bumper of trailer. 03.13

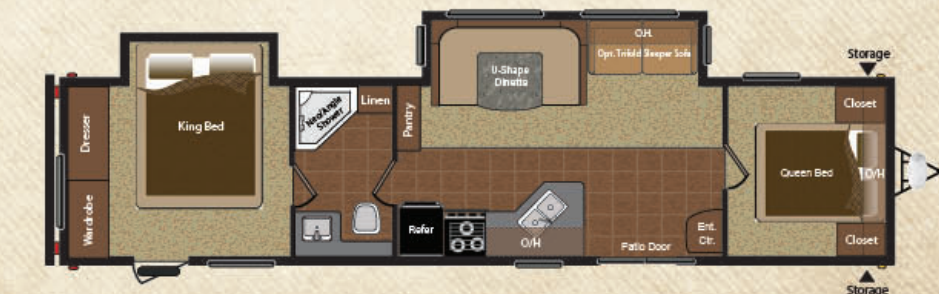
FLOORPLANS

YOUR
HOME*Away*FROM
HOME**38BHDS**

SHIPPING WEIGHT: 8420

**38FDDS**

SHIPPING WEIGHT: 8340

**38FQDS**

SHIPPING WEIGHT: 8190

38BHDS**Front bunkhouse with rear bedroom**

We've built our bunkroom with plenty of storage for all the clothes and toys. Best of all, everyone has their own space when it's time to settle in for the night.

38FDDS**Front living room with rear bedroom**

Hideout's family friendly living room comes packed to meet the needs of any sized family. Your family is sure to enjoy the increased spaciousness of our front living room.

38FQDS**Front bedroom with additional rear bedroom**

Hideout's bedroom provides spacious sleeping quarters and loads of storage space for a great night's sleep.

HIDEOUT LUXURY STANDARDS & OPTIONS

EXTERIOR

- » Upgraded Graphics Package
- » Adjustable Power Awning
- » Black Tank Flush
- » Exterior TV Hookup/Cable and Bracket
- » Entrance Door Featuring Integrated Strut
- » XL Entry Assist Handle
- » Walk on Roof
- » Ladder Backers
- » Powder Coated I-Beam Frame
- » Cambered Chassis
- » Two Heavy Duty Stabilizer Jacks
- » Easy Lube Axles
- » Full Length Outriggers
- » Dual Battery Rack
- » Two 20 lb. LP Bottles
- » Awning Color Coordinated
- » Heated and Enclosed Underbelly (N/A 23RB, 26B)
- » Fender Skirts
- » Exterior Speakers
- » Black Radius Window Frames
- » TV Antenna with Booster
- » Radio Antenna
- » Roof Vents
- » Cable Hook Up
- » GFI Electrical Outlets
- » Seamless One Piece Roof
- » Radius Skirting
- » Oversized Pass Thru Storage
- » Hose Storage in the Bumper
- » .024 Gauge Aluminum Siding
- » R-7 Insulation Throughout
- » Rain Gutters with Down Spouts
- » Four Stage Slide Room Seals
- » Roto-Cast Seamless Holding Tanks

INTERIOR

- » Central Control Panel
- » Radius Interior Bath Walls
- » Residential Refrigerator (38BHDS, 38FDDS, 38FQDS only)
- » Laundry Chute
- » 4 Interior Surround Sound Speakers
- » Interior TV Bracket
- » LCD TV
- » Kitchen Countertop Extension
- » Ball Bearing Drawer Guides
- » Nightshades in Living Room Arrangements
- » 12 Volt 55 Amp Converter
- » 13,500 BTU Air Conditioner
- » Entertainment System with AM/FM, CD, MP3 Jack
- » Jensen DVD Player
- » Foam Core Insulated A/C Ducts
- » Wallpaper Border
- » Built-In 30,000 BTU Furnace
- » 6 Gallon Gas DSI Quick Recovery Water Heater with By Pass Kit
- » Flex Pex Tubing with 10 Year Warranty
- » 81" Interior Height
- » 72" inch Slide Room Height
- » Tub Surround
- » Porcelain Foot Flush Toilet
- » Wall Switches for the Lights
- » RG6 Cable and Satellite Wiring
- » Pre-Drilled & Screwed Residential Cabinetry Throughout
- » Decorative Window Treatments
- » Panoramic Dinette Window
- » Jack Knife Sofa-Standard

- » 4 1/2" Crowned Roof
- » Truss Cleats on Both Sides
- » Double Trussed at Openings
- » Hurricane Straps Throughout
- » Loomed Wiring
- » Radius Corner Blocks
- » Radius Storage Doors
- » Radius Entry Doors

SAFETY

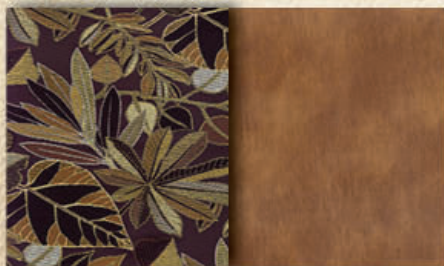
- » Safety Chains
- » Break Away Switch
- » Electric Brakes on All Wheels
- » Carbon Monoxide Detector
- » L.P. Gas Detector
- » Smoke Detector
- » Fire Extinguisher
- » GFI Electrical Outlets
- » Tinted Safety Glass
- » Radial Tires

OPTIONS

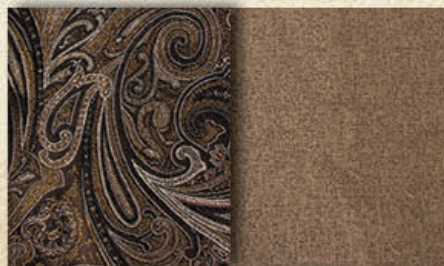
- » Exterior Shower
- » Spare Tire and Carrier
- » Tri-Fold Sleeper Sofa (N/A 23RB, 26B)
- » Rear Ladder
- » 15,000 BTU Air Conditioner
- » Two Additional Stabilizer Jacks (Four Total)
- » Gas/Electric DSI Water Heater
- » Twin 30# L.P. Bottles with Easy Access Cover
- » Freestanding Dinette (30FKDS, 30RKDS, 38BHDS, 38FDDS, 38FQDS only)

Standard features and options are subject to change without notice.

MAPLECREST



SADDLEBROOK



SILVER BIRCH



HIDEOUT LUXURY
DECOR

HIDEOUT LHS

280LHS SHOWN IN
SADDLEBROOK DECOR



HIDEOUT LHS TRAVEL TRAILERS

Sit back and relax in the new Hideout LHS. Loaded with value and tons of standard options, you are sure to have a fun filled weekend your friends and family won't forget.

Redefining
ITS CLASS

310LHS SHOWN IN
MAPLECREST DECOR

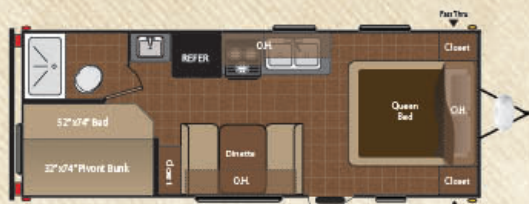
310LHS SHOWN IN
MAPLECREST DECOR

HIDEOUT LHS TRAVEL TRAILERS



Love to entertain? Bring the fun outside with Hideout's outdoor camp kitchen! Featuring dual burner cooktop, mini fridge and an outside sink! (268, 310)

HIDEOUT LHS FLOORPLANS



210LHS

SHIPPING WEIGHT: 4636



260LHS

SHIPPING WEIGHT: 5158



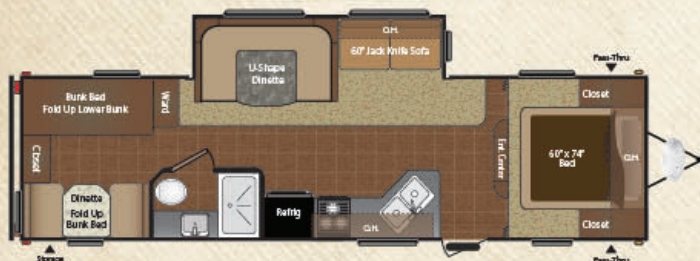
268LHS

SHIPPING WEIGHT: 6081



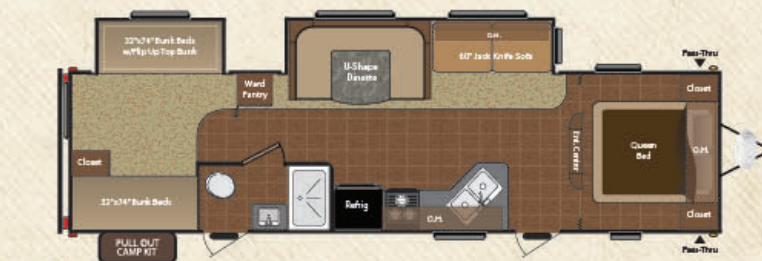
280LHS

SHIPPING WEIGHT: 6570



290LHS

SHIPPING WEIGHT: 6905



310LHS

SHIPPING WEIGHT: 7673

MODEL	210LHS	260LHS	268LHS	280LHS	290LHS	310LHS
SHIPPING WEIGHT	4636	5158	6081	6570	6905	7673
CARRYING CAPACITY	2564	2442	1584	3120	2660	1952
HITCH WEIGHT	600	645	665	890	765	825
EXTERIOR LENGTH*	26' 5"	29' 11"	29' 4"	32' 3"	33' 11"	35' 8"
EXT HEIGHT	10' 3"	10' 3"	11' 0"	11' 0"	11' 2"	825
FRESH WATER	45	45	45	45	45	45
WASTE WATER	32	32	32	38	38	38
GREY WATER	38	38	38	70	38	38
LPG CAPACITY	40	40	40	40	40	40

HIDEOUT LHS SPECIFICATIONS

DISCLAIMER: Product information is as accurate as possible as of the date of publication of this brochure. All features, floor plans, and specifications in this brochure are subject to change without notice. Please also consult Keystone's web site at www.keystonerv.com for more current product information and specifications. Tow Vehicle Disclaimer. CAUTION: Owners of Keystone recreational vehicles are solely responsible for the selection and proper use of tow vehicles. All customers should consult with a motor vehicle manufacturer or their dealer concerning the purchase and use of suitable tow vehicles for Keystone products. Keystone disclaims any liability or damages suffered as a result of the selection, operation, use or misuse of a tow vehicle. KEYSTONE'S LIMITED WARRANTY DOES NOT COVER DAMAGE TO THE RECREATIONAL VEHICLE OR THE TOW VEHICLE AS A RESULT OF THE SELECTION, OPERATION, USE OR MISUSE OF THE TOW VEHICLE. *Length is defined as the distance from the centerline of hitch pin/coupler to rear bumper of trailer. 02.13

STANDARDS & OPTIONS

EXTERIOR

- » Upgraded graphics package
- » Walk on roof
- » Ladder backers
- » Powder coated I-Beam frame
- » Cambered chassis
- » Four heavy duty stabilizer jacks
- » Easy lube axles
- » Full length outriggers
- » Dual battery rack
- » Two 30 Lb. LP bottles with cover
- » Heated and enclosed fresh water tank
- » Exterior speakers
- » Black radius window frames
- » TV antenna with booster
- » Radio antenna
- » Roof vents
- » Cable hook up
- » GFI electrical outlets
- » Seamless one piece roof
- » Radius skirting
- » Oversized pass thru storage
- » Hose storage in bumper
- » .024 Gauge aluminum siding
- » R-7 insulation throughout
- » Rain gutters with down spouts
- » Four stage slide room seals
- » Roto-cast seamless holding tanks

INTERIOR

- » Central control panel
- » Laundry chute
- » 2 Interior surround sound speakers
- » Ball bearing drawer guides
- » 12 Volt 55 amp converter
- » 13,500 BTU air conditioner
- » Foam core insulated A/C ducts
- » 30,000 BTU forced air furnace
- » 6 Gallon gas DSI quick recovery water heater with bypass kit
- » Flex pex tubing with 10 year warranty
- » 81" Interior height
- » 72" slide room height
- » Tub surround
- » Wall switches for the lights
- » RG6 cable and satellite wiring
- » Pre-drilled & screwed residential cabinetry throughout
- » Decorative window treatments
- » Panoramic dinette window
- » Jack knife sofa (standard)
- » Mini blinds throughout
- » Truss cleats on both sides
- » Double trussed at openings
- » Hurricane straps throughout
- » Loomed wiring
- » Radius corner blocks
- » Radius storage doors

SAFETY

- » Safety chains
- » Break away switch
- » Electric brakes on all wheels
- » Carbon monoxide detector
- » LP gas detector
- » Smoke detector
- » Fire extinguisher
- » GFI electrical outlets
- » Tinted safety glass
- » Radial tires

LHS COMFORT PACKAGE

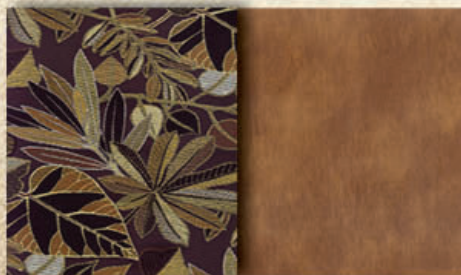
- » Electric awning
- » Diamond plate
- » Exterior and interior speakers
- » Outside 110 receptacle
- » Porcelain foot flush toilet
- » Color enhanced slideouts
- » Radius entry doors w/strut
- » X-Large baggage doors
- » Detachable face AM/FM CD w/MP3
- » Stainless steel appliance
- » Radius interior walls
- » Radius entertainment centers
- » 7 C.U. FT. refrigerator
- » Oven
- » E-Coated Wheels

OPTIONS

- » Exterior shower
- » Spare tire and carrier
- » 15,000 BTU air conditioner
- » 6 Gallon gas/electric DSI water heater

Standard features and options are subject to change without notice.

MAPLECREST



SADDLEBROOK



SILVER BIRCH



HIDEOUT LHS
DECOR

HORNET

Platinum

275RLS SHOWN IN
SADDLEBROOK DECOR



HORNET FIFTH WHEELS

All new aerodynamic profile, 7-foot tall ceilings, more storage, and new Mega Slide System deliver more livability in these family friendly RVs. Step out of the ordinary and step into the NEW Hornet.



295BH5 SHOWN IN
SADDLEBROOK DECOR



285RK5 SHOWN IN
SADDLEBROOK DECOR



295BH5 SHOWN IN
SADDLEBROOK DECOR

HORNET PLATINUM FLOORPLANS



245RLS

SHIPPING WEIGHT: 6838



275RLS

SHIPPING WEIGHT: 7536



285RKS

SHIPPING WEIGHT: 7772



295BHS

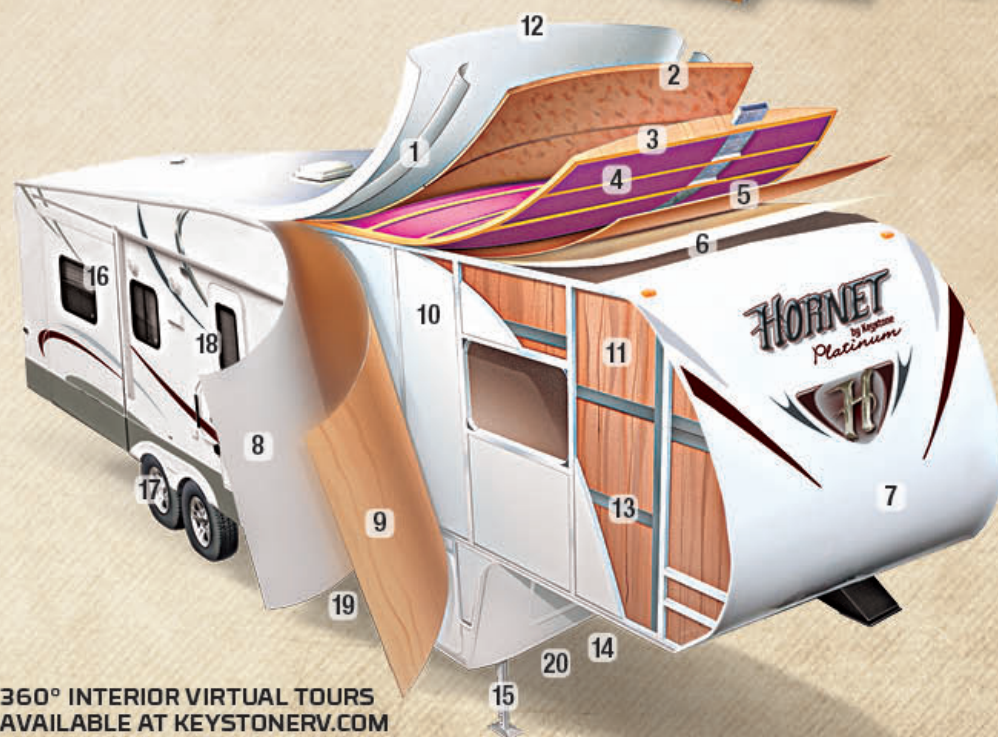
SHIPPING WEIGHT: 7907

HORNET PLATINUM CONSTRUCTION

- 1 Radius roof transition molding
- 2 3/8" roof decking
- 3 5" fabricated rafters on 16" centers
- 4 Fiberglass insulation (R-14)
- 5 Ceiling decking Luan backer
- 6 Vinyl ceiling panel
- 7 Aerodynamic Front Profile
- 8 Laminated Side Wall
- 9 1/8" Luan board
- 10 Solid block foam insulation (R-9)
- 11 Interior decorator wall board
- 12 One-piece EPDM rubber roof membrane with 12 year warranty
- 13 2" welded aluminum wall studs
- 14 Darco Wrapped Main Floor Moisture Barrier
- 15 Easy access adjustable snap jack pins
- 16 Tinted safety glass windows
- 17 Aluminum Wheels Option
- 18 Radius Entry Doors
- 19 Heated and Enclosed Underbelly
- 20 5/8" Seamless Sub-Floor



ENJOY THE COMFORTS
OF THE ALL NEW CAMP
KITCHEN ON THE 295BHS



360° INTERIOR VIRTUAL TOURS
AVAILABLE AT KEYSTONERV.COM

HORNET PLATINUM

STANDARDS & OPTIONS

EXTERIOR

- » Walk on Roof
- » Electric Awning
- » Filon Front Cap
- » Ladder Backers
- » Powder Coated I-Beam Frame
- » Cambered Chassis
- » Four Heavy Duty Stabilizer Jacks
- » Aluminum Rims
- » Easy Lube Axles
- » Full Length Outriggers
- » Dual Battery Rack
- » Two Enclosed 30lb Bottles
- » Awning Color Coordinated
- » Heated and Enclosed Underbelly
- » Fender Skirts
- » Diamond Plate
- » Exterior Speakers
- » Black Radius Window Frames
- » TV Antenna with Booster
- » Radio Antenna
- » Roof Vents
- » Cable Hook Up
- » GFI Electrical Outlets
- » Seamless One Piece Roof
- » Radius Skirting

- » Full Basement Storage Under Queen Bed
- » Hose Storage in the Bumper
- » R-9 Insulation Throughout
- » Rain Gutters with Down Spouts
- » Four Stage Slide Room Seals
- » Roto-Cast Seamless Holding Tank

INTERIOR

- » LCD TV
- » 13,500 BTU Air Conditioner
- » True Sound Entertainment System with AM/FM, CD, DVD, MP3 Jack
- » Foam Core Insulated A/C Ducts
- » Wallpaper Border
- » 72" Slide Ceiling Height
- » 30,000 BTU Furnace
- » 6 Gallon Gas/Electric DSI Quick Recovery Water Heater
- » Heater with By-Pass Kit
- » Flex Pex Tubing with 10 Year Warranty
- » Ball Bearing Drawer Guides
- » Wall Switches for the Lights
- » RG6 Cable and Satellite Wiring

- » Sculptured Valances with Lambrequins
- » Panoramic Dinette Window
- » Deep Slide Room Cabinets
- » Shirt Closets
- » Tri-Fold Sleeper Sofa

BEDROOM

- » TV Hook Up
- » Bedspread-Master Bedroom
- » Bed Storage with Struts
- » Cabinets Above Queen Bed
- » Reading Light

BATH

- » Porcelain Foot-Flush Toilet
- » Tub Surround
- » Shower Exhaust Fan
- » Large Medicine Cabinet
- » Robe and Towel Hooks
- » Glass Shower Enclosing (275RLS, 285RKS, 295BHS)

KITCHEN

- » 12 Volt SHURflo® Water Pump
- » Three Drawers

- » Silverware Divider
- » Holding Tank Monitor Panel
- » Range with Hi-Output Burner
- » 7 cu foot Refrigerator (5 Settings)
- » Exhaust Fan with Light
- » Microwave
- » Reversible Dinette Cushions
- » Largest Residential Kitchen Sink
- » High Rise Kitchen Faucet
- » Waste Basket Storage
- » Pre-Drilled & Screwed Residential Cabinetry Throughout
- » Mortise and Tenon Door Joints
- » Raised Panel Upper Cabinet Doors
- » Overhead Cabinets Above the Sink
- » Sink Cover
- » Heavy Duty Ball Bearing Drawer Glides
- » Counter Top Extensions

OPTIONS

- » Spare Tire Carrier/Cover
- » Rear Ladder
- » Two Swivel Rockers
- » Free Standing Dinette
- » 15,000 BTU Air Conditioner

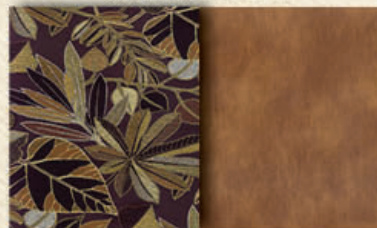
Standard features and options are subject to change without notice.

HORNET PLATINUM

SPECIFICATIONS & DECOR

MODEL	245RLS	275RLS	285RKS	295BHS
SHIPPING WEIGHT	6838	7536	7772	7907
CARRYING CAPACITY	3162	2639	2383	2338
HITCH WEIGHT	1265	1375	1355	1445
EXTERIOR LENGTH*	27' 10"	30' 2"	31' 5"	32' 3"
EXT HEIGHT	11' 9"	11' 9"	11' 9"	11' 9"
FRESH WATER	45	45	45	45
WASTE WATER	38	38	38	38
GREY WATER	38	38	76	76
LPG CAPACITY	60	60	60	60

MAPLECREST



SADDLEBROOK



SILVER BIRCH



DISCLAIMER: Product information is as accurate as possible as of the date of publication of this brochure. All features, floor plans, and specifications in this brochure are subject to change without notice. Please also consult Keystone's web site at www.keystonerv.com for more current product information and specifications. Tow Vehicle Disclaimer: CAUTION: Owners of Keystone recreational vehicles are solely responsible for the selection and proper use of tow vehicles. All customers should consult with a motor vehicle manufacturer or their dealer concerning the purchase and use of suitable tow vehicles for Keystone products. Keystone disclaims any liability or damages suffered as a result of the selection, operation, use or misuse of a tow vehicle. KEYSTONE'S LIMITED WARRANTY DOES NOT COVER DAMAGE TO THE RECREATIONAL VEHICLE OR THE TOW VEHICLE AS A RESULT OF THE SELECTION, OPERATION, USE OR MISUSE OF THE TOW VEHICLE. *Length is defined as the distance from the centerline of hitch pin/coupler to rear bumper of trailer. 02.13

Go RVing.



RVIA
RECREATION VEHICLE
INDUSTRY ASSOCIATION



HIDEOUT HIDEOUT LHS HORNET

WWW.KEYSTONERV.COM - 2642 HACKBERRY DRIVE - PO BOX 2000 - GOSHEN, IN. 46527-2000



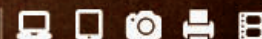
WWW.KEYSTONERV.COM/HIDEOUT



CONNECT WITH KEYSTONE RV AND STAY UP TO
DATE WITH PRODUCT NEWS AND INFORMATION

WWW.KEYSTONERV.COM/HORNET

VISIT OUR WEBSITE TO VIEW INTERIOR PHOTOS,
360 VIRTUAL TOURS AND MUCH MORE.



YOUR LOCAL HIDEOUT/HORNET DEALER:

MARCH 2013