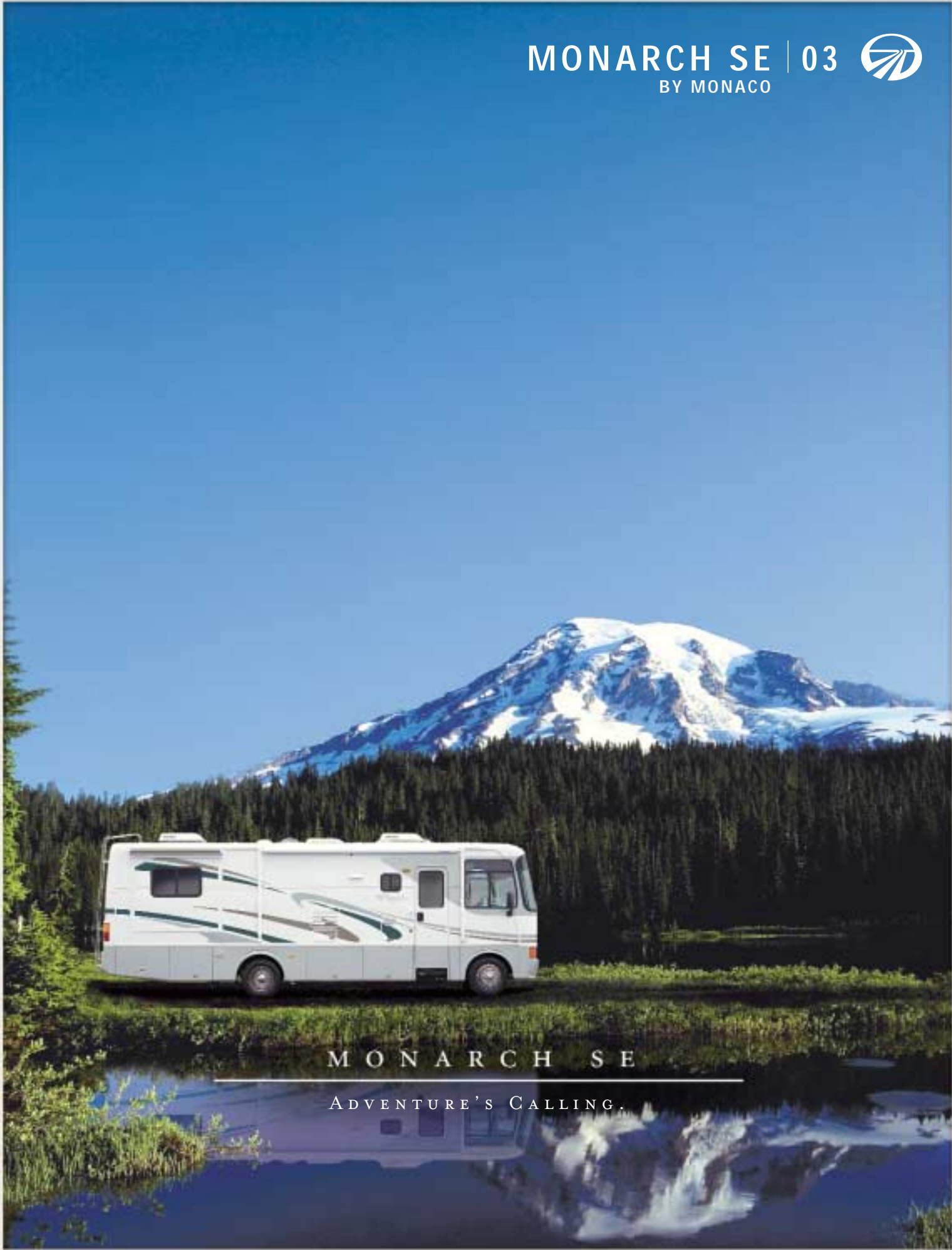


MONARCH SE | 03  
BY MONACO



MONARCH SE

ADVENTURE'S CALLING.

EXQUISITE STYLE.  
IMPECCABLE PERFORMANCE.  
WELCOME TO MONACO COUNTRY.



Considering stepping up to a Monaco? It all starts right here, in the 2003 Monarch SE. At Monaco, you'll find that the difference is in the details — so allow us to point out a few of the things we're especially proud of. Like our Alumaframe® Superstructure, with a double welded C-Channel aluminum frame for superior strength and integrity. As well as our multi-layer roof and wall construction, EasyStor slide-out system, and such conveniences as power heated remote mirrors and a rear ladder. You'll also appreciate the luxury of our roomy double slide-out floorplans and your choice of four wood cabinetry finishes and three beautiful interior decors. Sound enticing? It's the new Monarch SE. Where quality and value come together — Monaco style.

 MONARCH SE

YOU IMMEDIATELY  
RECOGNIZE THE  
DISTINCTIVE  
MONACO QUALITY.  
AND THAT'S THE  
WHOLE POINT.

One step inside the 2003 Monarch SE, and you'll know what sets a Monaco coach apart. It's the sum of dozens of thoughtful details — coupled with a wide range of choices to let you customize your coach to best suit you. Starting with thirteen different floorplans, ten double slide-outs, two triple slide-outs, including the popular bath-and-a-half. Up front, you'll enjoy the luxury of pilot and co-pilot recliner seats with optional six-way power controls. There's a padded vinyl ceiling for easy cleaning and reduced noise. And overhead, the 25" stereo color TV is wired through the ceiling speakers. A VCR, DVD player and digital satellite system prep are all excellent options.



*This computer laptop workstation on the co-pilot's side is the perfect place to plan your itinerary or catch up on e-mail.*



*This optional Easy bed sofa is perfect for kids or guests and adds versatility to the coach's floorplan.*

Walnut Hill / 36WDD / Autumn Haze

*The cozy dinette features large pull-out storage drawers which are ideal for stowing books, magazines or table linens.*





*You can easily check and control all the coach's systems, including slide-outs, tank levels, air conditioning/heat, and electrical systems right here in this systems control center. For increased efficiency, you have the option of an energy management system with 50 amp service, also located here.*



*The well-organized bathroom is easy to care for, thanks to its laminate countertop, linoleum flooring, one-piece fiberglass shower, and glass shower door with brass frame.*

**FEATURES THAT SET THE STANDARD FOR A WHOLE INDUSTRY.**

Style and convenience come together beautifully throughout the coach's interior. Take, for example, the beautiful cabinetry. You'll choose from three attractive styles, each with brass finished hardware and raised panel doors on the overhead cabinets. In the bedroom, you'll have plenty of space for everything you need, thanks to a variety of wardrobes, dressers and closets, depending on the floorplan. You'll also find ample under-bed storage for easy access to your belongings. And the 36DBD model features a full private bath in the rear of the coach, with a half-bath up front for maximum versatility.

*Sand Deco / 34SBD / Autumn Haze*

*The galley is designed for maximum efficiency, and many models include a pantry closet as well as a countertop extension. There are many attractive appliance options, including a large four-door refrigerator with ice maker and a convection microwave with touch control — both available on most floorplans.*



FOR THOSE WITH A DRIVE  
FOR SOMETHING BETTER.

To provide a superior RV experience, the Monarch SE offers a number of awning options, including a Carefree® patio awning, Carefree® automatic patio awning, Omega slide-out awning, and a window awning. You'll appreciate the radius flush mount single pane (or optional dual pane) tinted slider windows, as well as the radius entrance door with screen and deadbolt lock. For added enjoyment while camping, the coach includes the option of an exterior entertainment center.



The Monarch SE features large one-piece, polyethylene pass-through storage compartments and baggage doors with integrated single-handle latches.



The Monarch SE features our remarkable EasyStor system allowing the storage bays to slide out with the slide-out room, so you'll never have to stretch, strain and crawl on your knees to retrieve your stowed belongings.



The Monarch SE pampers you with every convenience to make the trip more enjoyable. Its many features include an optional rear vision system, multi-positioned sunvisors, cruise control, power steering, a CD player/radio with four speakers, and a one-piece molded dash for maximum stability and a good fit. You also have the option of luxurious Soft Touch vinyl pilot and co-pilot seats.



This central utility bay is easy to clean and provides easy access to all your hook-ups.

The high quality of the Monarch SE is reflected in the details of its exterior. It features smooth aluminum exterior walls, one-piece front and rear molded fiberglass caps, rear ladder, mud flaps, power heated remote mirrors, and headlamps with turn signals.



## 2003 EXTERIOR COLORS AND FABRICS

For 2003, our designers have selected exquisite fabric combinations for each model of the Monarch SE. Now, it's *your* turn to choose.

Autumn Haze Oak



Regal Cherry



Maple



Walnut



**Note:** While the color of the motorhome's exterior and the interior fabrics shown in this sales brochure are fair and reasonable depictions, they may not be an exact match of the actual colors. In addition, the consistency of the wood grains may vary.

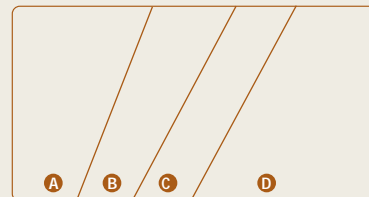
WALNUT HILL



SAND DECO



BOMBAY PARK



- A. Carpet
- B. Bedspread
- C. Chair/Accent
- D. Sofa

## 2003 SPECIFICATIONS, STANDARDS, OPTIONS AND WOODS

FORD WEIGHT RATINGS (LBS.)	29W	30PDD	30PBD	32PBD	34PDT	34SBD	34PBD	36WDD	36PBD	36PCD	36PCT	36PED	36DBD
Gross Vehicle	18,000	20,500	20,500	20,500	22,000	22,000	22,000	22,000	22,000	22,000	22,000	22,000	22,000
Gross Combined	23,000	25,500	25,500	25,500	26,000	26,000	26,000	26,000	26,000	26,000	26,000	26,000	26,000
Front Gross Axle	7,000	7,000	7,000	7,000	7,500	7,500	7,500	7,500	7,500	7,500	7,500	7,500	7,500
Rear Gross Axle	11,000	13,500	13,500	13,500	14,500	14,500	14,500	14,500	14,500	14,500	14,500	14,500	14,500

### WORKHORSE WEIGHT RATINGS (LBS.)

Gross Vehicle	20,700	20,700	20,700	20,700	22,000	22,000	22,000	22,000	22,000	22,000	22,000	22,000	22,000
Gross Combined	25,700	25,700	25,700	25,700	26,000	26,000	26,000	26,000	26,000	26,000	26,000	26,000	26,000
Front Gross Axle	7,500	7,500	7,500	7,500	8,000	8,000	8,000	8,000	8,000	8,000	8,000	8,000	8,000
Rear Gross Axle	13,500	13,500	13,500	13,500	14,500	14,500	14,500	14,500	14,500	14,500	14,500	14,500	14,500

### MEASUREMENTS

Wheelbase	190"	190"	190"	208"	228"	228"	228"	238"	238"	242"	242"	238"	238"
Overall Length	29' 10"	30' 9"	30' 9"	32' 7"	34' 10"	34' 10"	34' 10"	36' 6"	36' 6"	36' 11"	36' 11"	36' 6"	36' 6"
Overall Height	11' 8"	11' 8"	11' 8"	11' 8"	11' 8"	11' 8"	11' 8"	11' 8"	11' 8"	11' 8"	11' 8"	11' 8"	11' 8"
Overall Height Workhorse	11' 8"	11' 8"	11' 8"	11' 8"	12'	12'	12'	12'	12'	12'	12'	12'	12'
Interior Height	6' 6"	6' 6"	6' 6"	6' 6"	6' 6"	6' 6"	6' 6"	6' 6"	6' 6"	6' 6"	6' 6"	6' 6"	6' 6"
Interior Width	94 1/2"	94 1/2"	94 1/2"	94 1/2"	94 1/2"	94 1/2"	94 1/2"	94 1/2"	94 1/2"	94 1/2"	94 1/2"	94 1/2"	94 1/2"
Exterior Width	100 1/2"	100 1/2"	100 1/2"	100 1/2"	100 1/2"	100 1/2"	100 1/2"	100 1/2"	100 1/2"	100 1/2"	100 1/2"	100 1/2"	100 1/2"

### TANK CAPACITY (GAL.)

Water Heater	6	6	6	6	6	6	6	6	6	6	6	6	6
Gray Tank	42	42	42	42	42	42	42	42	42	42	42	42/40	42/40
Black Tank	42	42	42	42	42	42	42	42	42	42	42	42/39	42/39
Fresh Tank	70	62	62	62	62	62	62	55	62	62	62	55	55
LP Tank <sup>1</sup>	24	24	24	24	24	24	24	24	24	24	24	24	24
Fuel Tank	75 (Ford), 60 (Workhorse)		75	75	75	75	75	75	75	75	75	75	75

<sup>1</sup> Actual filled LP capacity is 80% of listing due to safety shut-off required on tank.

All tank capacities are estimated based upon calculations provided by the tank manufacturers and represent approximate capacities. The actual "usable capacity" may be greater or less than the estimated capacities based upon fabrication and installation of the tanks.

### MONARCH SE VALUE PACKAGE (FORCED OPTION):

In addition to the standard features the Monarch SE has to offer, this year we're also offering a host of options to make your "home away from home" as comfortable as possible. Introducing the 2003 Value Package from Monaco.

- Upgraded window treatments with full fabric overlays
- Larger drawers on booth dinette
- Fluorescent ceiling lights throughout (except private bath)
- Upgraded mirror to bedroom back wall and arched mirror to living room wall
- Upgraded dinette chairs with freestanding dinette
- Smoked glass doors on overhead cabinets
- Stainless steel sink with sink covers in the galley
- Framed art in living area or bedroom
- Upgraded decorative wall lights
- Cabinet hardware pulls in lieu of knobs
- Bath door casing added to private bath door (hallway side only)

### BODY CONSTRUCTION

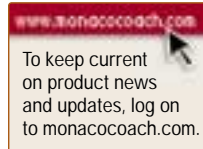
Alumaframe® Superstructure	Steel Framed Floor	One Piece Engine Cover	One-Piece Polyethylene Storage Compartment
Steel Cage Construction	Laminated Structurwood™ Flooring	Power Heated Remote Mirrors	Mud Flaps
Peaked Aluminum Roof with Fiberglass Insulation	Interior Paneling with 3/4" Insulation	Headlamps with Turn Signals	Painted Mask and Skirt with Vinyl Exterior Graphics
Smooth Aluminum Exterior Walls	Foam Insulation Underbelly with Luaun Backer	Baggage Doors with Integrated Single Handle Latches	Rear Ladder
Front & Rear Molded Fiberglass Cap		EasyStor Slide-Out	

### COCKPIT

Fiberglass Automotive Dash	Cruise Control	Carpet Driver and Passenger Floor Mats	Six-Way Power Pilot Seat
CD Player/Radio with Four Speakers	Power Steering	Computer Laptop Workstation	Six-Way Power Co-Pilot Seat
Multi-Positioned Sunvisors	Plastic Center Console for Engine Cover with Cup Holder & Snack Tray		Rear Vision System
Rear Vision System Prep	Side Cup Holder for Co-Pilot Seat		CB Prep
Intermittent Windshield Wipers	Fabric Pilot & Co-Pilot Recliner Seats		AM/FM Cassette (Deletes CD Player)
Tilt Steering Wheel			

### OPTIONS

Soft Touch Vinyl Pilot and Co-Pilot Seats



**APPLIANCES AND ACCESSORIES**

Large Double-Door Refrigerator with Black ABS Doors  
 High-Output 3-Burner Cooktop with Flush Mount Range Cover  
 Bi-Fold Range Cover  
 Spacesaver Microwave with Touch Control  
 25" Stereo Color TV with Remote Control in Living Area  
 TV Antenna with Booster with TV Jacks

Video Control Box with Dual Hook-Up for DSS and Cable  
 Cable TV Hook-Up and Telephone Jacks

**OPTIONS**

Large Double-Door Refrigerator with Ice Maker  
 Large Four-Door Refrigerator with Ice Maker (34SBD, 34PBD, 36WDD, 36PBD, 36PED, 36DBD)

Three-Burner Range with Oven ILO Three-Burner Cooktop  
 Spacesaver Convection Microwave with Touch Control  
 Stereo TV Wired Through Ceiling Speakers  
 VCR  
 DVD Player  
 Washer/Dryer Prep with 10 Gal. Water Heater (N/A: 29W, 30PBD, 34SBD, 36PCD, 36PCT) (Requires 50 Amp Service)

13" Color TV with Remote Control in Bedroom  
 Vented Combination Washer/Dryer (N/A: 29W, 30PBD, 34SBD, 36PCD, 36PCT) (Requires Washer/Dryer Prep with 50 Amp Service)  
 Digital Satellite System Prep  
 Exterior Entertainment Center (N/A: 34PDT)  
 Fireplace (36 PED) (Requires 50 AMP Service)

**INTERIOR**

Autumn Haze Oak Cabinetry  
 Raised Panel Cabinet Doors on Overhead Cabinets, Flat Panel Cabinet Doors on Base Cabinet and Wardrobes  
 Black ABS Refrigerator Inserts  
 Telestrut Overhead Storage Doors and Positive Catches on All Other Doors  
 Low Friction Roller Drawer Guides  
 Wood Interior Grab Handle  
 Brass Finished Cabinet Hardware  
 Laminated Kitchen Countertop with Stainless Steel Sink, Chrome Faucet, and Sink Cover  
 Kitchen Countertop Extension (29W, 34PBD, 36WDD, 36PBD, 36PED, 36DBD)  
 Arched Back Booth Dinette with Drawer(s) (N/A: 36PED)  
 Freestanding Dinette with Two Freestanding Chairs and Two Folding Chairs (36PED)  
 Linoleum Flooring in Kitchen (N/A: 30PBD, 34PDT, 36PBD)

Nylon Carpet in Kitchen (30PBD)  
 Linoleum Flooring in Bathroom  
 Nylon Carpeting and Pad in Living Area and Bedroom  
 Padded Vinyl Ceiling  
 Large Overhead Cabinets in Kitchen and Bedroom Slide-Outs  
 Laminate Bathroom Countertop  
 Bath and a Half (36DBD Only) (Plank Floor Std. in Rear Bath)  
 One-Piece Fiberglass Shower  
 Glass Shower Door with Brass Frame  
 Medicine Cabinet with Shelves  
 Bathroom Mirror  
 Towel Bars in Bathroom  
 Decorative Mirror on Rear Wall (N/A: 29W, 36WDD, 36PCD, 36PCT, 36PBD, 36DBD)  
 Queen Bed  
 Bedspread with Pillows  
 Mini Blinds in Kitchen and Bathroom

Valance at Entry Door with Clock  
 Party Table between Co-Pilot Seat and Barrel Chair (34SBD, 34PBD, 36WDD, 36PCD, 36PCT, 36DBD)  
 Fabric Barrel Chair (32PBD, 34SBD, 34PBD, 36WDD, 36PBD, 36PCD, 36PCT, 36DBD)  
 Jack Knife Sofa  
 Shelf Behind Sofa (N/A: 36PED)  
 Integrated Cup Holder in Main Slide-Out House Next to Sofa (N/A: 29W)  
 Barrel Chair and Desk Chair Bedroom (36PCD, 36PCT)

**OPTIONS**

Value Package (See Page 11) Forced Option  
 Woods: Regal Cherry, Maple, or Walnut  
 New decors: Walnut Hill-Tan, Sand Deco-Taupe, Bombay Park-Green  
 Plank Flooring in Kitchen & Bath

Freestanding Dinette with Two Freestanding Chairs and Two Folding Chairs (N/A: 34PDT, 36PED)  
 Bedroom Desk (Foot of Bed) (32PBD, 34PDT, 34SBD, 36WDD, 36PBD, 36PED, 36DBD)  
 Day/Night Pleated Shades in Living Area and Blackout Shades in Bedroom  
 Twin Beds (29W)  
 Fabric Jack Knife Sofa with Table (ILO Dinette) (29W, 30PBD)  
 Easy Bed Sofa (29W, 32PBD, 34PDT, 36PBD, 36PED)  
 Fabric Electric Sofa (N/A: 36PCD, 36PCT, 36PED)  
 Fabric L-Sofa Sleeper with drawer (36PED)  
 Fabric Recliner Chair (N/A: 29W, 30PDD, 30PBD, 34PDT, 36PED)  
 Hide-A-Bed Sofa (N/A: 29W, 30PBD, 34PDT, 36PBD, 36PED)  
 Hide-A-Bed Sofa with Footrest (36PED)

**ELECTRICAL SYSTEMS AND LIGHTS**

30 Amp 120V Distribution Panel and Power Cord  
 55 Amp Electronic 12V Power Converter  
 Onan® 4.0 KW Generator (29W, 30PBD, & 30PDD) When the Option of Dual Roof Air is selected, this will require the 5.5 KW Generator Option  
 Onan® 5.5 KW Gas Gold Generator (32'-36' units)  
 Two 6V Batteries  
 Battery Disconnect Switch

12V and 110V Outlets in Cockpit Area  
 Porch Light  
 Power Entry Step with Light  
 Water Pump Switch in Service Area  
 Lights in Outside Storage Compartment  
 120V Receptacles in Outside Storage Compartment  
 Underhood Utility Light  
 Computer Hook-Up with Phone Jack in Dinette Area

Systems Control Center  
 Fluorescent Ceiling Lights Throughout (Except Private Bath)  
 Decorative Dining Light  
 Cosmetic Vanity Lights in Bathroom  
 Halogen Lights Under Living Room Cabinets  
 Decorative Wall Lights in Bedroom  
 Decorative Wall Lights in Living Area

**OPTIONS**

Energy Management System with 50 Amp Service  
 50 Amp Service (Required Fireplace)  
 Onan® 5.5 KW Gas Gold Advantage Generator (29W, 30PDD, 30PBD) (Required with Dual Air Selection)

**PLUMBING AND LP SYSTEMS**

Demand Water System and Water Pump  
 6-Gallon LP Gas/Electric Water Heater with Electronic Ignition (DSI)  
 Winterization Valving System

Toilet with Sprayer  
 No-Fuss Flush Black Holding Tank Rinsing System  
 Insulated Systems Compartment with Easy Access to Hook-Up

Gravity and Pressurized Water Fill  
 Separate Faucet for Filtered Water

**OPTIONS**

Neo Angled Bath Tub (34PBD, 36WDD, 36PBD, 36PCD, 36PCT, 36PED, 36DBD)  
 10-Gallon LP Gas/Electric Water Heater with Electronic Ignition (DSI) (N/A: 30PBD)

**HEATING, VENTS, AND AIR CONDITIONING**

One 13.5M BTU Air Conditioner with Ducted Air and Wall Thermostat (N/A: 36' Models)  
 One 13.5M BTU and One 11.0M BTU Air Conditioner and Wall Thermostat (Std: 36' Models)

35M BTU Electronic Ignition Furnace (31M BTU Furnace on 29W)  
 Electronic AC/Heat Climate Control System  
 In-Floor Ducting Heating System  
 12V Roof Vent in Bath

**OPTIONS**

Dual 13.5M BTU Air Conditioner (36' Models Only) (Requires 50 Amp Service Option)  
 One 13.5M BTU and One 11.0M BTU Air Conditioner and Wall Thermostat (30PDD, 30PBD, 32PBD, 34SBD, 34PBD) (Requires Onan® 5.5 KW Gas Gold Advantage Generator Option)

12V Wet Bay Heater  
 12V Attic Fan

**WINDOWS, DOORS, AND AWNINGS**

Radius Flush Mount Single Pane Safety Glass Dark Tinted Slider Windows  
 Radius Entrance Door with Screen  
 Entry Assist Handle  
 Carefree® Topper Slide-Out Awning (N/A: 29W)

Awning Rail  
 Tinted Skylight in Bathroom with Protecta Glaze

**OPTIONS**

Radius Flush Mount Dual Pane Safety Glass Dark Tinted Slider Windows

Carefree® Patio Awning  
 Carefree® Automatic Patio Awning  
 Carefree® Omega Slide-Out Awning (N/A: 29W)  
 Window Awning

**SAFETY**

Fire Extinguisher  
 Deadbolt Lock on Entrance Door  
 120V GFI Protected Circuit (Kitchen, Bathroom, Exterior)

LP Gas Detector  
 Smoke Detector  
 Carbon Monoxide Detector

Pilot and Co-Pilot Three-Point Seat Belts (Lap and Shoulder)  
 Third Brake Safety Light  
 Egress Window

**FORD CHASSIS/ENGINE/SUSPENSION**

Roadmaster Smartstructure®  
 Electronic Fuel Injected Gas Engine 6.8L V10  
 Cubic Inch Displacement: 415"/6.8L  
 4-Speed Automatic Transmission with Overdrive  
 130 Amp Alternator  
 Rear Axle Ratio: 5.38:1

Radial Tires: 245/70/19.5F  
 Leaf Spring Suspension  
 ABS Brakes  
 Hitch Receiver with Six-Point Connector (4,000 lb. on 22,000 GVW Chassis) (5,000 lb. on 18,000 lb. and 20,500 lb. GVW Chassis)  
 Undercoating

**OPTIONS**

Manual Hydraulic Leveling System  
 Stainless Steel Wheel Simulators

**WORKHORSE CHASSIS/ENGINE/SUSPENSION**

Roadmaster Smartstructure®  
 Electronic Fuel Injected Gas Engine 8.1L/V8  
 Cubic Inch Displacement: 496"/8.1L  
 5-Speed Automatic Transmission with Overdrive  
 145 Amp Alternator  
 Rear Axle Ratio: 5.38:1

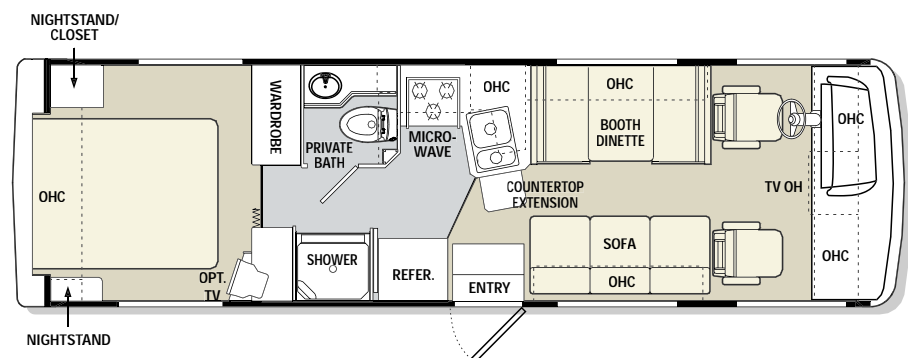
Radial Tires: 235/80R/22.5G on 34SBD, 34PBD, 34PDT, 36WDD, 36PCD, 36PCT, 36DBD; 245/70R/19.5F on 30PDD, 30PBD; and 225/70R/19.5 on 29W  
 Stainless Steel Wheel Simulators  
 Leaf Spring Suspension  
 ABS Brakes

**OPTIONS**

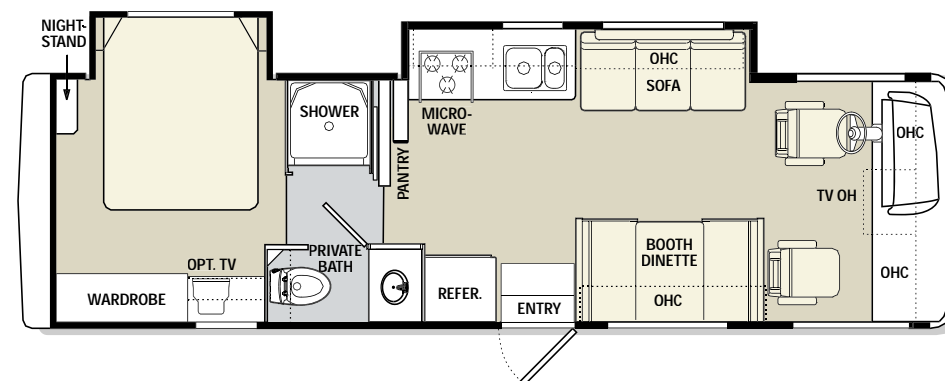
Manual Hydraulic Leveling System (N/A: 36PCT)

Due to the large variety of options and floorplan arrangements available to our customers, actual weights for each unit can differ significantly. Monaco Coach provides a weight sticker on each unit we produce which includes that unit's tank capacities and approximate weight. Consult your local Monaco Coach dealer for unit availability and further information. Your towed vehicle should be equipped with auxiliary brakes if the weight of the towed load exceeds 1,000 lbs. The information printed in this brochure reflects product design, fabrication, and component parts at the date of printing. The manufacturer reserves the right, at any time, to make changes in product design or material or component specifications as its sole option, without notice. This includes the substitution of components of a different brand or trade name which will result in comparable performance. All information printed in this brochure is subject to change after the date of printing. Some features shown or mentioned in this brochure are optional and may only be available in selected floorplans. Photographs may show props or decorations that are not standard equipment on Monaco Coach models. Monaco Coach, the Monaco logo and its design, are registered trademarks. All other products and company names are trademarks and/or registered trademarks of their respective holders. While the color of the motorhome's exterior and the interior fabrics depicted in this sales brochure are fair and reasonable depictions, the colors depicted may not be an exact match of the actual colors because of the variances in photo-processing and variances caused by inserting the photographs within the sales brochure. Due to product improvements, changes during the model year and/or transcription errors that may occur, information represented within this brochure may not be accurate at the time of your purchase. If certain information is significant to your purchasing decision, please confirm the information with your dealer prior to submitting your order.

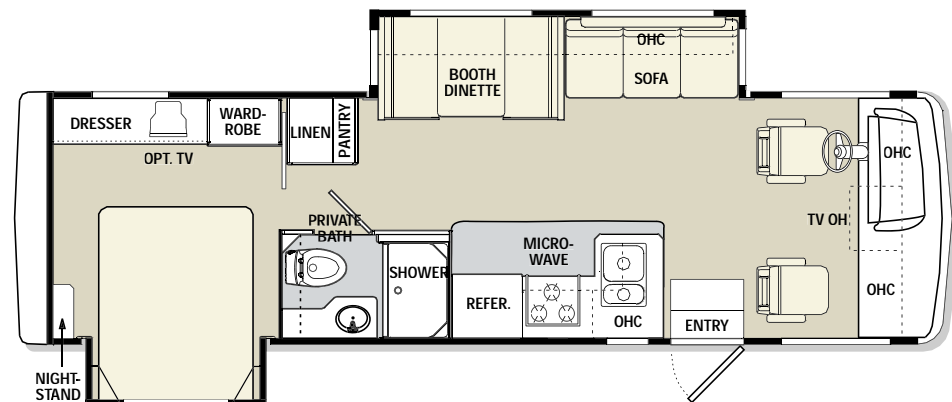
29W



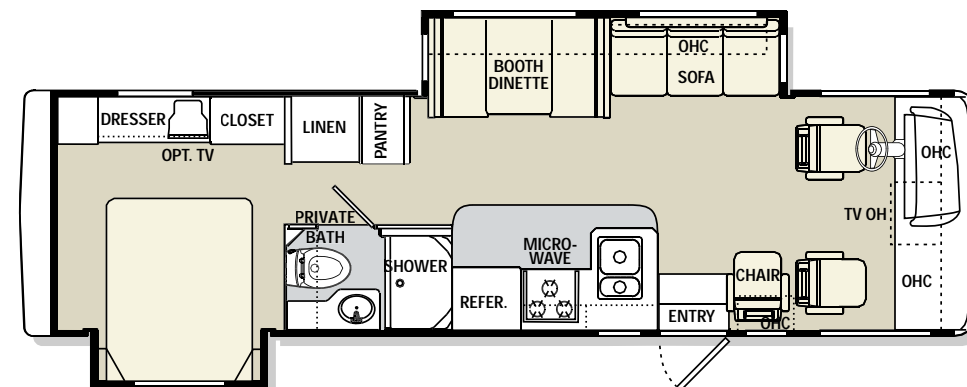
30PBD



30PDD



32PBD

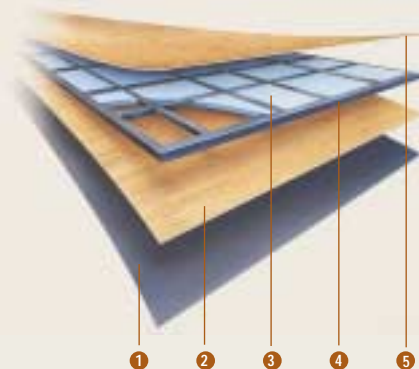


**INNOVATION. ENGINEERING. AND QUALITY THAT LEADS AN INDUSTRY.**

A Monaco coach. It's what other coaches aspire to be. And what other RVers wish they owned. Why? Because our Alumaframe® Superstructure, steel cockpit safety cage, and other innovative construction features put us years ahead of the rest of the industry. And because our high-quality materials and attention to detail have given us a reputation we live up to every day. Want to know more? A Monaco dealer near you will be happy to show you firsthand. In the meantime, here are a few of the highlights.

**FLOOR CONSTRUCTION:**  
(BOTTOM TO TOP)

1. Darco
2. Luaun
3. Blue foam
4. 1-1/2" steel tube
5. 5/8" Structurwood™



**ROADMASTER SMARTSTRUCTURE® FEATURES:**

- The Roadmaster SmartStructure® provides superior strength, balance and weight distribution while enabling Monaco engineers to make maximum use of space. SmartStructure® is fully integrated with your choice of Workhorse or Ford chassis.
1. A hitch receiver with six-point connector provides plentiful towing capacity.
  2. The Roadmaster SmartStructure® technology allows for more under-the-coach storage, including full pass-through storage bays.

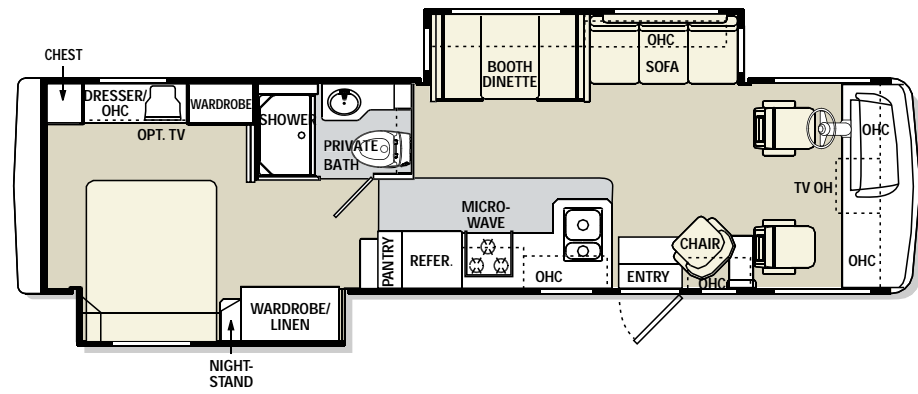
3. The steel truss system has a low center of gravity that grounds the coach and provides a strong platform to carry your coach almost anywhere you want to go.
4. Propane tank, inverter, water heater and batteries are accessible for easy use and service.
5. Anti-lock brakes help you stay in control.



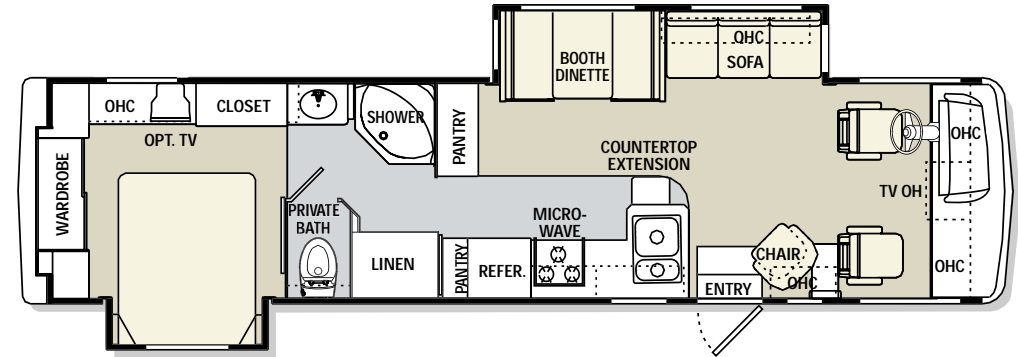


Carpet Linoleum Plank

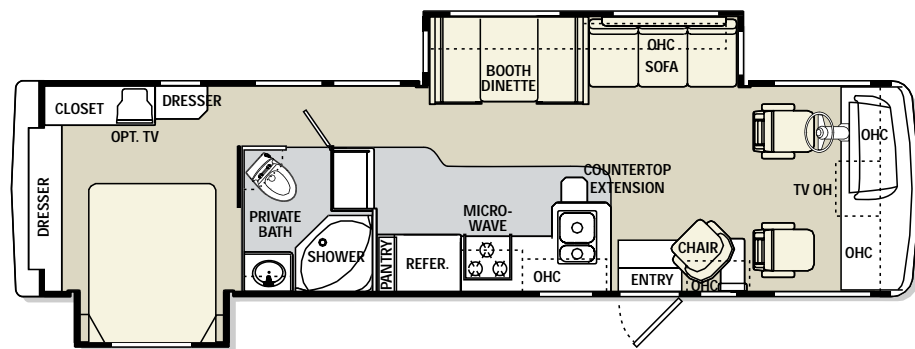
34SBD



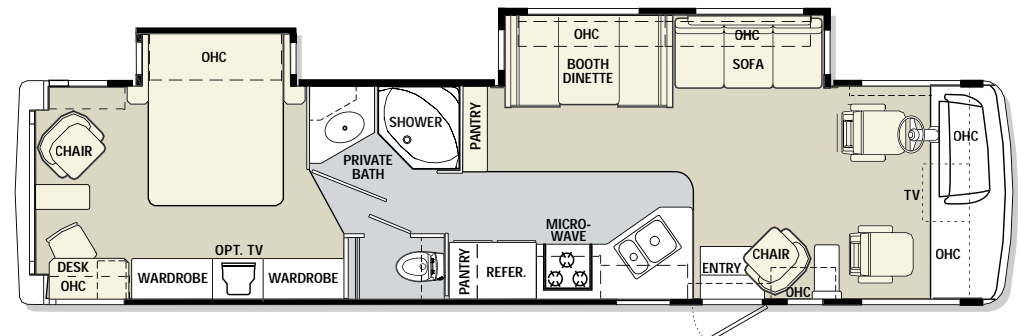
36WDD



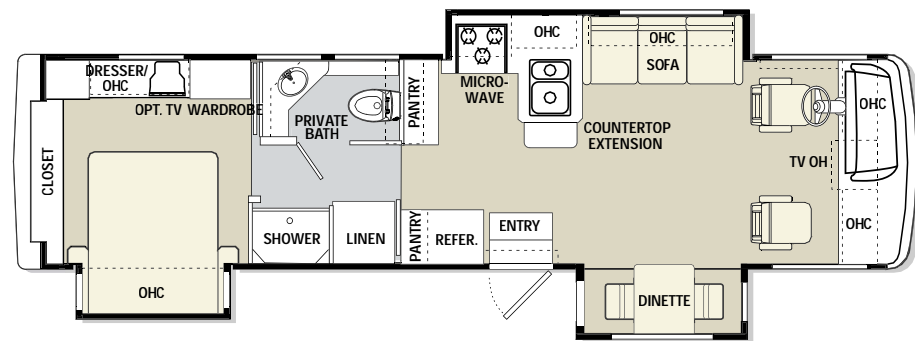
34PBD



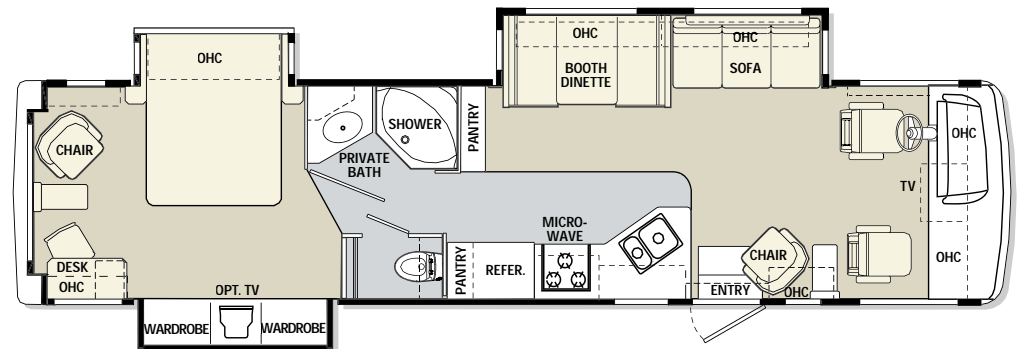
36PCD



34PDT

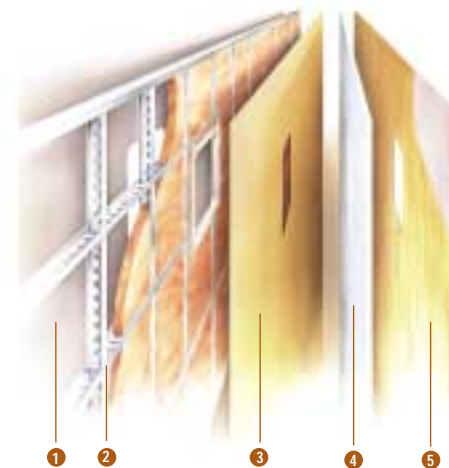


36PCT



**THE ROOF STRUCTURE CONSISTS OF:**  
(TOP TO BOTTOM)

1. Peaked aluminum roof
2. Luaun backing
3. Thick, tapered bead foam insulation
4. Aluminum double I-beam superstructure filled with fiberglass insulation
5. Vapor barrier
6. Structure foam: thermal insulative barrier
7. 1/2" bead foam insulation
8. Foam padding for extra insulation
9. Padded vinyl ceiling

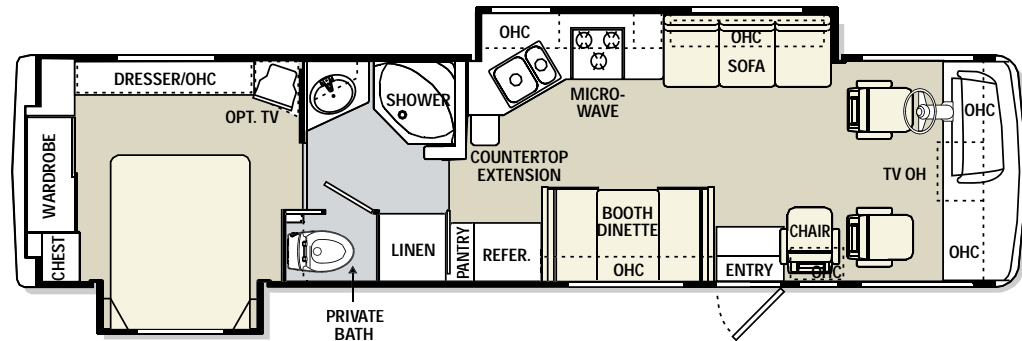


**WALL LAYERS OF PROTECTION:**  
(LEFT TO RIGHT)

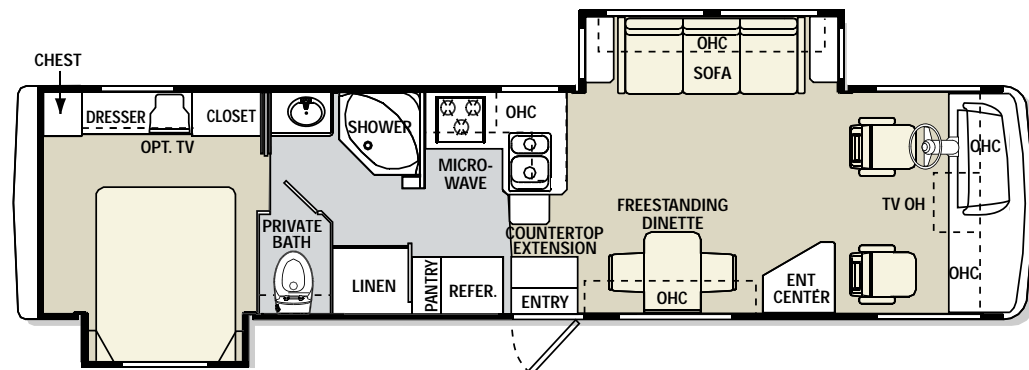
1. Smooth .063 aluminum
2. Interlocking C-Channel Alumafame® filled with 1-1/2" fiberglass insulation glued in place so it doesn't sag or leave spaces uninsulated
3. Vapor barrier
4. Bead foam adds comfort, saves energy and provides a thermal insulative barrier
5. Interior paneling

Carpet
  Linoleum
  Plank

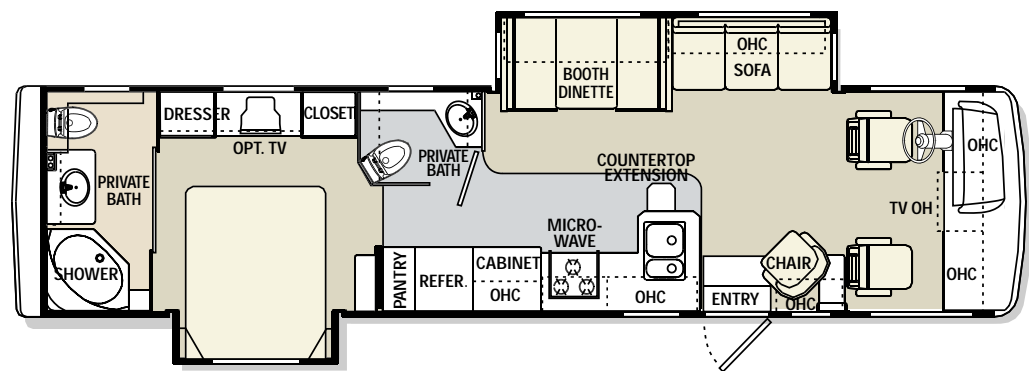
36PBD



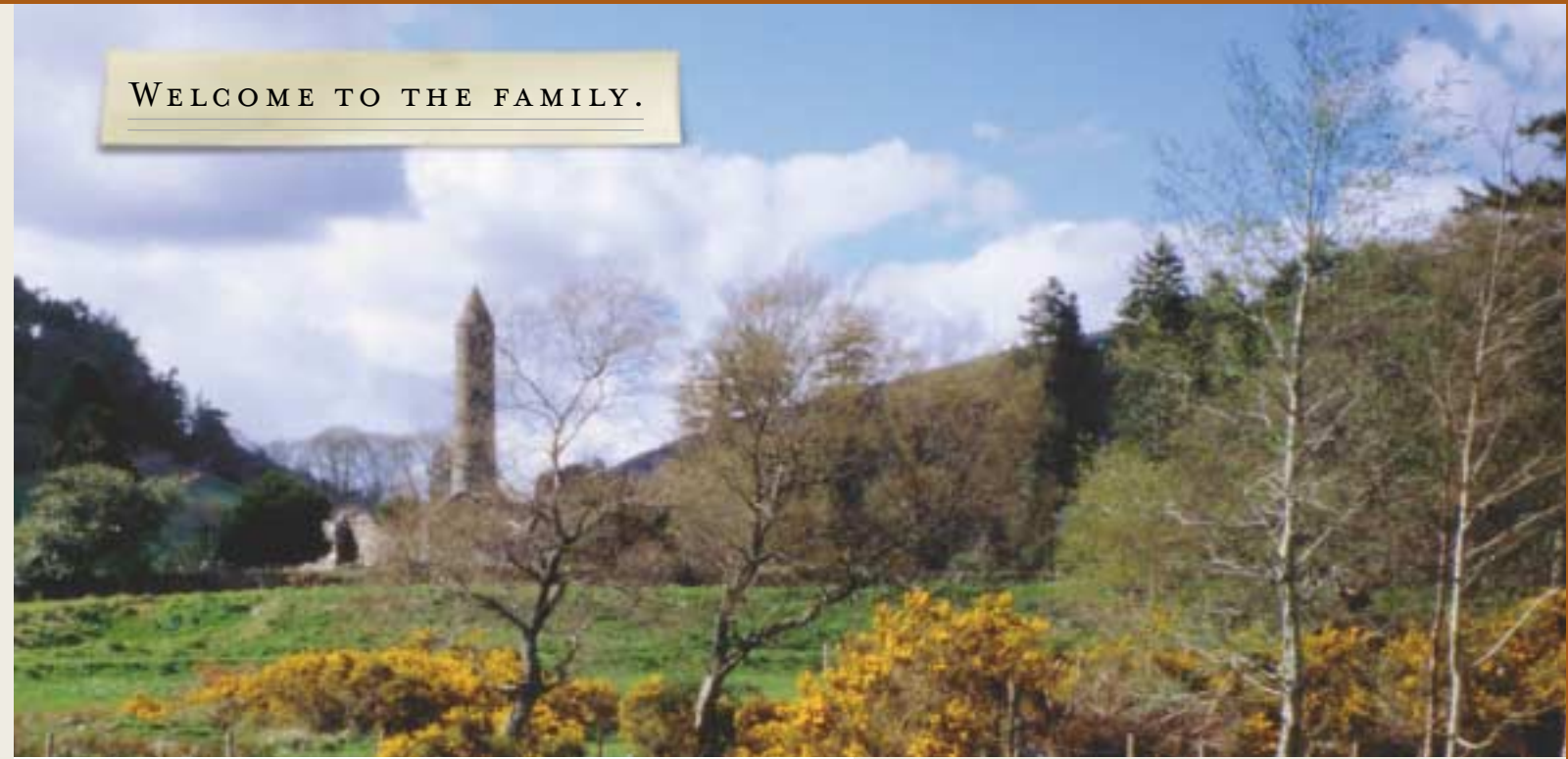
36PED



36DBD



WELCOME TO THE FAMILY.



◀ WEB SITE

Our web site is loaded with many features. Visit [www.monacocoach.com](http://www.monacocoach.com) for news you can use. The site contains all the basics, plus factory tours, a handy "dealer finder" option and updates on Monaco, its products and upcoming club events.

LIFESTYLES MAGAZINE ▶

To keep you informed, we'll send you a free subscription to *Lifestyles* magazine. You'll learn about product tests, club events, destinations and news from the road.

OWNER ADVANTAGE PROGRAM

As a Monaco owner, you're invited to join our comprehensive Owner Advantage Program. With this impressive roadside assistance package, Master Certified RVDA Technicians and ASE Certified Technicians are on call 24 hours a day to handle any problems you may experience with your coach. But that's not all. Members of our Owner Advantage Program also receive the following benefits: unlimited roadside service, fuel delivery, tire change, battery jump start, lockout service, trip routing and maps, and much more.



During your first year of ownership of a brand new motorhome, you will have access to free 24-hour emergency assistance, including free towing and roadside service.



CLUBS & RALLIES

Connect with other Monaco owners and build lasting friendships through the owner clubs and rallies. With chapters all across the nation, you'll have many opportunities to share the Monaco lifestyle. You will also receive a free one-year membership to a Monaco Owners Club.



## A STORY OF PASSION AND PERFECTION.

---

The fresh morning air that steams your coffee as you step outside. The quiet confidence of driving headlong into the scenery before you. The rush of smiles that greets you on surprising the kids with a visit. At Monaco, moments like these are our motivation — the inspiration behind the desire to create an elegant means to an end, a seamless synthesis of journey and destination. Ours is a passion that's shared by a growing number of freedom-seekers across the nation. By those who appreciate the quality of experience that comes from honing every detail to its most reliable performance. A performance that's supported nationwide throughout our network of service and support, day after day, year after year. Welcome home — welcome to Monaco.

*For more information, visit a Monaco dealer near you — or, log on to our web site, at [www.monacocoach.com](http://www.monacocoach.com).*



---

91320 Industrial Way, Coburg, OR 97408 800 634 0855  
606 Nelson's Pkwy., Wakarusa, IN 46573 800 650 7337

Monaco Coach Corporation is traded on the NYSE under the listing MNC.