

ULTRASPORT 2003



DAMON DARES YOU.



If you can find another



Go ahead. Check out our competitors. Ultrasport™ is the better value. We're sure of it. For one thing, it's a hard-charging diesel motorhome that sells for the price of a gas-powered coach. It was built as a diesel from the ground up, too: Ultrasport's not a compromised gas coach like some others in its price range. And there are no compromises in its beauty or luxury, either. We dare you to find a single competitor with all these extraordinary Ultrasport features:

motorhome with features like this at Ultrasport's price...

You may be in the middle of nowhere, but that doesn't mean you have to be uncomfortable. The huge **27-inch television** in Ultrasport's cockpit overhead ensures that you will feel right at home, wherever you are.

Our **ergonomically designed dash** puts everything within reach, with conveniences such as easy-to-read gauges, backlit rocker switches and an integrated back-up monitor.

You'll be pleased to know that Ultrasport is built on a powerful **Freightliner® chassis** with full air brakes, air ride and an Allison® transmission. Configured with either a Cummins® or a Caterpillar® engine, you will have the power you need to go the places you want.

A **huge windshield and cockpit windows** not only provide a safe view of the road, but also give Ultrasport a stylish, contemporary look.

The standard **Pioneer® AM/FM/CD player** in the cockpit dash is sure to make those long drives more enjoyable. Option the **Pioneer XM-satellite radio tuner**, and you not only expand your choice of stations, but you also get coast-to-coast programming — with no need to switch stations as you travel.

To make sure you don't have to leave anything behind, Ultrasport is equipped with multiple **pass-through storage compartments**. The compartments are constructed with waterproof rotocast and provide one-way drain valves for easy cleaning.

You also have the option of a **Surroundsound® home theater system**, complete with a DVD/CD player, five full-range satellite speakers, an amplified subwoofer and a Pioneer receiver.

Molded ABS dash



Pullout pantry drawers



Home theater system



27-inch television







Option the one-piece, seamless **fiberglass roof** and you'll virtually eliminate maintenance costs.

Ceramic tile in the kitchen and bath areas can be optioned for its elegant appeal. And unlike the competition, Ultrasport's tile resists cracking because it is adhered to cement board, not the plywood subfloor.

Our **cabinet door construction** is second to none. Mortise and tenon joints, an oven-baked performance catalyst finish and solid wood are just some of the features that make our cabinets the most reliable in the industry.

You don't have to settle for storing everything under your motorhome; Ultrasport has a substantial amount of **interior storage** space. Plus, with the galley pantry, which has adjustable shelves and drawers, it's simple to get to items, even when they're stored in the very back.

Ultrasport's convenient **storage in the step well** can be used as a cooler. Now you don't have to make a trip through the living room every time you want another drink.



When compare the price. Damon wins every time. Period.

An optional **10-gallon Motoraid® gas/electric water heater** provides hot water immediately when you pull into camp by simply warming the water with the heat from the engine.

Our gorgeous new **full-body paint packages** make Ultrasport stand out, even when comparing it to motorhomes that cost \$50,000 more.

For a Damon Dare checklist for easy comparison shopping, visit our web site at www.DamonRV.com. We're confident that these features put Ultrasport in a class of its own. So go ahead, shop around. Once you see everything that goes into an Ultrasport, we're confident you wouldn't dare settle for anything less.

Pioneer AM/FM/CD player



Storage in step well



Pass-through storage



Bloomfield Sand



Cobblestone Suede



Silverhills Beige



Woodland Willow



Maple



Oak



Champagne



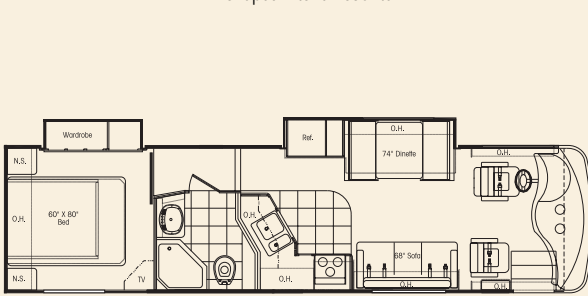
Black



Pewter

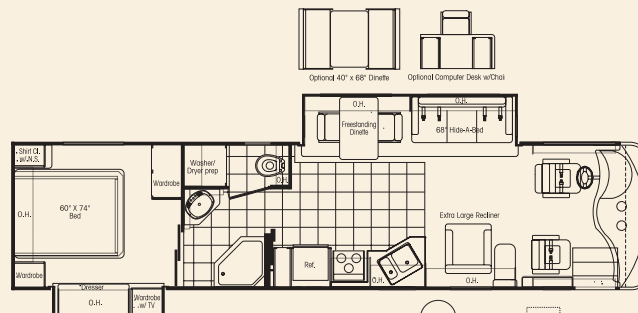


3465 LE Living-area slideout • Closet slideout
• L-shaped kitchen counter



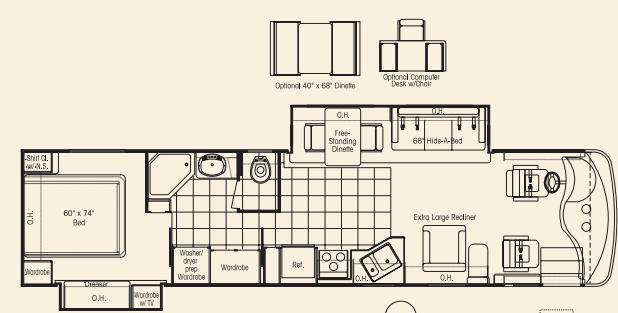
Optional Home Theatre

3677 Living-area slideout • Closet slideout • Washer/dryer ready



Optional 60" J-Lounge

3679 Living-area slideout • Bedroom slideout • Lots of closet space



Optional 60" J-Lounge

Optional Home Theatre

Daring choices ... to fit your life.

Décor

Damon's interior designers and engineers have created a choice of exciting environments that not only help you feel right at home, but also lend a sense of personality to your Ultrasport.

Floor Plans

Whichever Ultrasport floor plan you choose, you can be sure it's thoughtfully laid out to provide the roomiest, most comfortable, most convenient mobile living experience you've ever had.

Paint

Gorgeous automotive full-body exterior paint in a choice of three colors gives Ultrasport a distinctly upscale look. It's a new option for 2003 that's already turning heads and attracting a lot of buzz.

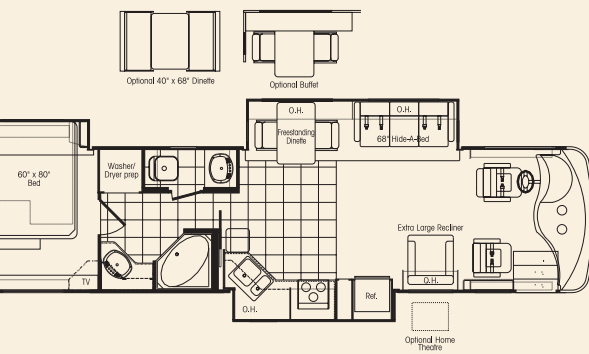
Deluxe graphics package — 3600 & 3800 series (standard)



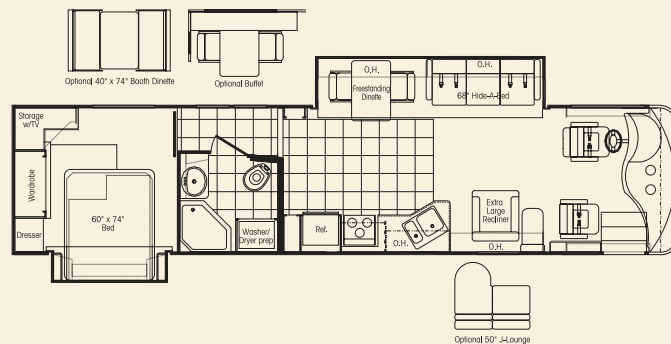
3465 LE deluxe graphics package (standard)



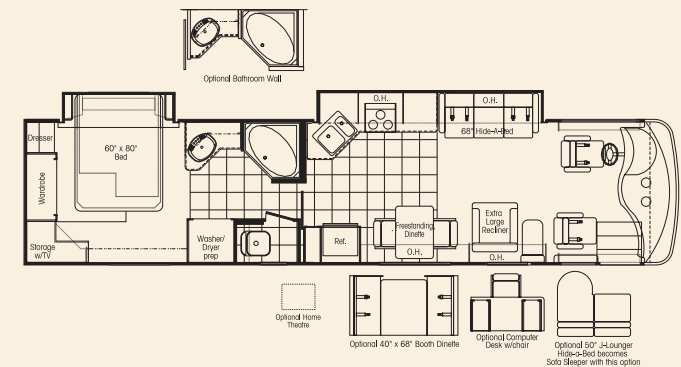
3873 Triple slideout • Dual bath vanities • End-of-bed storage



3876 Living-area slideout • Bedroom slideout • Floor-to-ceiling windows in hall
• Washer/dryer ready



3889 Living-area slideout • Bedroom slideout • Private stool
• Lots of kitchen counter space



The Sidewalls

Sidewalls are five layers thick:

- Exterior fiberglass
- Luan
- Aluminum frame
- Bead-foam insulation
- Interior wallboard

The walls are also vacuum-bond laminated for added strength and rigidity. The lamination process eliminates "soft walls," because it integrates all layers, turning them into one solid structure.

All wall openings — for doors, windows and other components — are framed in aluminum tubing with welded joints. This further strengthens the coach body.

The Utilities

It's no problem to travel in all four seasons because of Ultrasport's heated holding tanks and fully contained plumbing systems. We've mounted the tanks horizontally, making service and maintenance easy — you don't have to cut any steel to access the tanks.

The Basement and Storage

The Ultrasport basement employs a strong, welded steel truss system. The trusses are horizontal to better distribute house-body weight. They also provide a central location for attaching the house and storage compartments. And they allow for Ultrasport's huge pass-through storage area.

The Floor

A water-resistant, structurewood floor supports the living area in the motorhome. Framed in 1.5-inch welded steel tubing, it is insulated with solid bead-foam insulation and protected with a galvanized underbelly, which will not rust or corrode.

Dare to go anywhere: Ultrasport's built to take it.



The Roof

Ultrasport's roof is also vacuum-bond laminated for superior strength and rigidity.

It features an aluminum rafter support system with bowed rafters to maintain the roof's crowned shape. A crowned roof permits better water runoff, which helps prevent leaks. It also increases the insulation factor, especially around air-conditioner channels.

The optional one-piece fiberglass roof is seamless, eliminating the possibility of leaks and maintenance expenses.

The Chassis

Quality construction starts with the chassis. And Ultrasport uses only the finest: a powerful Freightliner® chassis that can be ordered with either a Cummins® or a Caterpillar® engine.

What makes the difference? Advanced engineering. Computer-aided design. Innovative manufacturing techniques. And paying attention to feedback from RVers just like you.

At Damon, we also maintain consistent standards. Many other manufacturers cut corners. Not us. Every motorhome we make, whatever the price, gets built the same way — the right way — with the same high-quality materials, components and construction techniques.

Chassis	3465 LE	3677	3679	3873	3876	3889
275-hp Cummins® ISB	S	N/A	N/A	N/A	N/A	N/A
300-hp Cummins® ISB (available late 2003)	O	S	S	S	S	S
300-hp Caterpillar® engine	N/A	O	O	O	O	O
330-hp Caterpillar® engine (available late 2003)	O	O	O	O	O	O
In-block engine heater	S	S	S	S	S	S
Leece Neville® 160-amp, 12-volt alternator	S	S	S	S	S	S
Allison® MH-2000 automatic transmission – 5 speed	S	N/A	N/A	N/A	N/A	N/A
Allison® MH-3000 automatic transmission – 6 speed	N/A	S	S	S	S	S
Exhaust brake	S	S	S	S	S	S
Full air brakes with auto slack adjusters (front and rear)	S	S	S	S	S	S
Midland® Pure-Air Plus™ heated air dryer	S	S	S	S	S	S
Air-ride suspension	S	S	S	S	S	S
22.5" radial tires	S	S	S	S	S	S
Leveling jacks	S	S	S	S	S	S
Stainless-steel wheel liners	S	S	S	S	S	S
Front and rear mud flaps	S	S	S	S	S	S
Trailer hitch (5,000 lbs.)	S	S	S	S	S	S
Emergency start circuit	S	S	S	S	S	S
Under-hood light	S	S	S	S	S	S
Layer of neoprene vibration dampener	S	S	S	S	S	S

Weights and Measures	3465 LE	3677	3679	3873	3876	3889
Chassis	Freightliner®	Freightliner®	Freightliner®	Freightliner®	Freightliner®	Freightliner®
Wheelbase	200"	228"	228"	242"	242"	242"
GVWR (lbs.)	24350	26850	26850	27910	27910	27910
GCWR (lbs.)	28000	31850	31850	32910	32910	32910
Overall length	34'10"	38'3"	38'3"	39'5"	39'5"	39'5"
Overall width	101"	101"	101"	101"	101"	101"
Overall height with A/C	12'	12'	12'	12'	12'	12'
Fresh water system (appx. gal.)	99	99	99	99	99	99
Gray water (appx. gal.)	50	50	50	50	50	50
Black water (appx. gal.)	50	50	50	50	50	50
LP (lbs.)	126	126	126	126	126	126
Sleeping capacity	4	4	4	4	4	4
Std. wt. (appx. lbs.)	18944	20966	20454	22800	22004	22424
Ext. storage (cu. ft.)	120	157	150	130	165	140
Interior drawers/capacity (cu. ft.)	28/13	22/13	30/18	21/9	29/19	27/18

S = Standard O = Optional N/A = Not available IPO = In Place Of

Bathroom	3465 LE	3677	3679	3873	3876	3889
Full-height fiberglass tub or shower with door	S	S	S	S	S	S
Skylight in shower	S	S	S	S	S	S
Obscure glass window in private stool area	N/A	S	S	S	N/A	S
Power vent	S	S	S	S	S	S
Foot-flush porcelain toilet with sprayer	S	S	S	S	S	S
Medicine cabinet with solid-wood door and mirror	S	S	S	S	S	S
Wallpaper border	S	S	S	S	S	S
Bedroom	3465 LE	3677	3679	3873	3876	3889
Pillowtop mattress	S	S	S	S	S	S
Bedsread with throw pillows	S	S	S	S	S	S
Lined wardrobe with mirrored doors	S	S	S	S	S	S
Wardrobe lights	S	S	S	S	S	S
TV area and jack	S	S	S	S	S	S
13" color TV	0	0	0	0	N/A	N/A
19" color TV	N/A	N/A	N/A	N/A	0	0
Lambrequin window treatments	S	S	S	S	S	S
Mini blinds	S	N/A	N/A	N/A	N/A	N/A
Day/night shades	0	S	S	S	S	S
Pin-up lights	S	S	S	S	S	S
AM/FM cassette stereo	0	0	0	0	0	0
Private bed/bath area	S	S	S	S	S	0
Cockpit	3465 LE	3677	3679	3873	3876	3889
Molded ABS dash	S	S	S	S	S	S
Burl instrument panel	S	S	S	S	S	S
Full instrumentation	S	S	S	S	S	S
Electronically controlled dash air conditioning	S	S	S	S	S	S
Premium AM/FM radio with CD	S	S	S	S	S	S
Premium AM/FM cassette radio with multi-disk CD changer	0	0	0	0	0	0
XM satellite radio tuner	0	0	0	0	0	0
4-speaker sound system	S	N/A	N/A	N/A	N/A	N/A
Premium 4-speaker sound system with powered subwoofer	N/A	S	S	S	S	S
Electronic cruise control	S	S	S	S	S	S
Power steering	S	S	S	S	S	S
Padded steering wheel	S	S	S	S	S	S
Douglas® tilt/telescoping steering column	S	S	S	S	S	S
Map lights	S	S	S	S	S	S
Dash fans	S	S	S	S	S	S
Roof-mounted air horns	0	S	S	S	S	S
Tinted wraparound windshield	S	S	S	S	S	S
Windshield privacy wrap	S	S	S	S	S	S
Front-mounted power mirrors	S	S	S	S	S	S
Floor mats	S	S	S	S	S	S
Reclining swivel captain's chairs	S	N/A	N/A	N/A	N/A	N/A
Ultra-leather reclining driver's seat with 6-way power	0	S	S	S	S	S
Ultra-leather reclining passenger seat	0	S	S	S	S	S
Ultra-leather reclining passenger's seat with 6-way power	0	0	0	0	0	0
3-point, wall-mounted seat and shoulder belts	S	N/A	N/A	N/A	N/A	N/A
3-point integrated seat and shoulder belts	N/A	S	S	S	S	S
Sun visors	S	N/A	N/A	N/A	N/A	N/A
Rosen® full-size sun visors	0	S	S	S	S	S
Carefree® electric sun visors with two manual side shades	0	0	0	0	0	0
Backup monitor system with audio	0	S	S	S	S	S
Drink holders	S	S	S	S	S	S

Exterior	3465 LE	3677	3679	3873	3876	3889
Paint package	0	S	S	S	S	S
Full-body paint package	0	0	0	0	0	0
Color-coordinated Carefree® awnings	0	0	0	0	0	0
Seamless fiberglass roof (required for full-body paint)	0	0	0	0	0	0
Color-coordinated Carefree® window awnings (only available with full-body paint)	0	0	0	0	0	0
Fog lights	S	S	S	S	S	S
Driving lights	S	S	S	S	S	S
Wide-body design	S	S	S	S	S	S
Radius-cornered domed roof	S	S	S	S	S	S
Seamless fiberglass roof	0	0	0	0	0	0
Roof vents	S	S	S	S	S	S
Rear ladder	0	0	0	0	0	0
Aerodynamic front and rear fiberglass caps	S	S	S	S	S	S
Contoured front and rear integrated bumpers	S	S	S	S	S	S
Awning rail	S	S	S	S	S	S
Side-mounted manual patio awning (Awnings not available on wide-body models in some locations. Check local regulations for applicable laws.)	0	0	0	0	0	0
Side-mounted manual front door awning	0	0	0	0	0	0
Side-mounted awning over slideout	S	S	S	S	S	S
Carefree® electric patio awning	0	0	0	0	0	0
Carefree® manual front door awning	0	0	0	0	0	0
Remote control for Carefree® electric patio awning	0	0	0	0	0	0
Entry-assist lighted grab handle	S	S	S	S	S	S
Upgraded gelcoated sidewall	S	S	S	S	S	S
Deluxe graphics package	S	S	S	S	S	S
Locking exterior storage doors	S	S	S	S	S	S
Custom-designed front entry door with screen	S	S	S	S	S	S
Black-framed radius-cornered windows	S	S	S	S	S	S
Dual-pane windows	0	0	0	0	0	0
2 porch lights (one on each side)	S	S	S	S	S	S
Easy-to-clean, lighted, rotocast storage compartments	S	S	S	S	S	S
Full basement pass-through storage	S	S	S	S	S	S
Gas pistons on exterior storage doors	S	S	S	S	S	S
RVQ grill	0	0	0	0	0	0
Kitchen	3465 LE	3677	3679	3873	3876	3889
Refrigerator: large flush-mounted, double-door	S	S	S	S	S	S
Refrigerator: large flush-mounted, double-door with icemaker	0	0	0	0	0	0
Refrigerator: side-by-side with icemaker						
IPO standard refrigerator and pantry	N/A	0	0	N/A	0	0
Refrigerator: solid-wood front (oak or maple)	0	S	S	S	S	S
3-burner range and oven	S	S	S	S	S	S
Cooktop IPO range and oven	0	0	0	0	0	0
Folding range cover	S	N/A	N/A	N/A	N/A	N/A
Solid-surface range cover	N/A	S	S	S	S	S
Mirrored backsplash behind stove	S	N/A	N/A	N/A	N/A	N/A
Microwave oven	S	S	S	S	S	S
Microwave/convection oven	0	0	0	0	0	0
Lighted power range hood and monitor panel with LPG readout	S	S	S	S	S	S
Double-bowl sink with oversized dish bowl	S	S	S	S	S	S
Sink covers	S	N/A	N/A	N/A	N/A	N/A

S = Standard 0 = Optional N/A = Not available IPO = In Place Of

Kitchen (con't.)	3465 LE	3677	3679	3873	3876	3889
Two solid-surface sink covers	N/A	S	S	S	S	S
Single-lever faucet with sprayer	S	S	S	S	S	S
Pantry	S	S	S	S	S	S
HP laminate countertop with solid-surface edge	S	N/A	N/A	N/A	N/A	N/A
Solid-surface countertops	N/A	S	S	S	S	S
Solid-wood cabinet doors throughout (oak or maple)	S	S	S	S	S	S
Brass-style cabinet hardware	S	S	S	S	S	S
12" x 12" vinyl tile flooring	S	S	S	S	S	S
Wood plank flooring in kitchen and bath (oak or maple)	0	0	0	0	0	0
Ceramic tile flooring in kitchen and bath	N/A	0	0	0	0	0
Booth dinette with padded top, deep storage drawers and solid-surface edged table	S	0	0	0	0	0
Freestanding dinette with 2 chairs	N/A	S	S	S	S	S
2 folding chairs (available with freestanding dinette only)	N/A	0	0	0	0	0
Mini blinds	S	S	S	S	S	S
Fantastic® power vent	0	0	0	0	0	0
Fantastic® power vent with rain sensor	0	0	0	0	0	0
Wallpaper border	S	S	S	S	S	S
Fire extinguisher	S	S	S	S	S	S

Living Area	3465 LE	3677	3679	3873	3876	3889
Extra-large recliner with footrest (cloth)	N/A	S	S	S	S	S
Extra-large recliner with footrest (ultra-leather)	N/A	0	0	0	0	0
Lounge table	N/A	S	S	S	S	S
J-lounger (ultra-leather) (replaces recliner and lounge table, N/A with hide-a-bed)	N/A	0	0	N/A	0	0
Sofa bed (cloth) (replaces hide-a-bed in 3670, 3677, 3679, 3876)	S	0	0	N/A	0	S
Sofa bed (ultra-leather) (replaces hide-a-bed in 3670, 3677, 3679, 3876)	0	0	0	N/A	0	0
Hide-a-bed (cloth) (N/A with J-lounger)	N/A	S	S	S	S	N/A
Hide-a-bed (ultra-leather) (N/A with J-lounger)	N/A	0	0	0	0	N/A
Mini blinds	S	N/A	N/A	N/A	N/A	N/A
Day/night shades	0	S	S	S	S	S
100% nylon carpeting with stain treatment and padding	S	S	S	S	S	S
27" color TV in cockpit overhead with full-function remote, antenna booster and jack	S	S	S	S	S	S
Video package (VCR and control center)	0	S	S	S	S	S
Theater TV/VCR sound	N/A	S	S	S	S	S
Home theater package (DVD/CD player and 5-channel Dolby® Pro-Logic receiver amplifier)	N/A	0	0	0	0	0
Decorator clock and mirror	S	S	S	S	S	S
Fabric ceiling	S	S	S	S	S	S
Living room pin-up lights	S	S	S	S	S	S
Aisle lights	S	S	S	S	S	S
Lined overhead cabinets throughout	S	S	S	S	S	S

Utilities	3465 LE	3677	3679	3873	3876	3889
Air conditioner: 13,500-BTU ducted center (front)	S	S	S	S	S	S
Air conditioner: 13,500-BTU ducted center (rear)	0	S	S	S	S	S
Dual heat pumps with 15,000-BTU A/C and 12,700-BTU heat	0	0	0	0	0	0
5-watt chassis solar battery charger (N/A with low-profile A/C or heat pump)	0	0	0	0	0	0
Furnace: 35,000-BTU electronic ignition, floor-ducted	S	S	S	S	S	S
Water heater: Motoraid® 10-gallon gas/electric with electronic ignition	0	0	0	0	0	0
Water heater: 10-gallon gas/electric with electronic ignition	S	S	S	S	S	S
Water heater bypass kit	S	S	S	S	S	S
Generator: 6.3 kW Onan® LP	S	S	S	S	S	S

Utilities (con't.)	3465 LE	3677	3679	3873	3876	3889
Generator: 7.5 kW Onan® Quiet Diesel	0	0	0	0	0	0
2500-watt inverter (N/A with 400-watt)	0	0	0	0	0	0
Entertainment inverter (N/A with 2500-watt)	0	0	0	0	0	0
Converter: solid-state 75-amp, 12-volt	S	S	S	S	S	S
12-volt demand water pump	S	S	S	S	S	S
6-volt Thermoil® auxiliary batteries (two standard, four with 2500-watt inverter)	S	S	S	S	S	S
Electronic battery distribution center	S	S	S	S	S	S
Battery disconnect	S	S	S	S	S	S
50-amp, 120-volt service with marine-type detachable power cord	S	S	S	S	S	S
Exterior GFCI receptacle	S	S	S	S	S	S
Enclosed heated potable and holding tanks	S	S	S	S	S	S
Black-water tank flush	S	S	S	S	S	S
City water hookup	S	S	S	S	S	S
Water filtration system	S	S	S	S	S	S
Washer/dryer prep	N/A	S	S	S	S	S
Washer/dryer combo	N/A	0	0	0	0	0
Telephone hookup	S	S	S	S	S	S
Cable TV/satellite hookup	S	S	S	S	S	S
Pre-wired for roof-mounted satellite dish	S	S	S	S	S	S
DSS manual satellite dish	0	0	0	0	0	0
Exterior shower	S	S	S	S	S	S
Carbon monoxide detector	S	S	S	S	S	S
LP gas detector	S	S	S	S	S	S
Smoke detector	S	S	S	S	S	S

Due to constant product improvements, the specifications, component parts and standard/optional equipment are subject to change without notice or obligation. Product photography or diagrams may show equipment that is optional. Damon Corporation reserves the right to make changes in prices and models and to discontinue models without notice or obligation. Components, parts or chassis may have been manufactured at times other than the model year indicated. All capacities are approximate and dimensions are nominal. All dry weights are based on standard model features and do not include optional features or equipment. Various RV components and features may differ to conform to local codes.

5,000-lb. towing capacity



Damon
Value by Design



If you are interested in touring Damon's manufacturing facilities, please visit our web site or call 800-860-5658.

Damon Corporation • P.O. Box 2888 • Elkhart, IN 46515
Literature or Dealers: 574-389-0179 or 800-577-5692
Customer service: 800-860-3812.
www.DamonRV.com