

STARCRAFT®

THE FUTURE OF CAMPING | pure and simple.

AUTUMN RIDGE AFFORDABLE TRAVEL TRAILERS

IT'S EASY TO SEE WHY THIS IS OUR MOST POPULAR TRAVEL TRAILER.

AUTUMN RIDGE



AUTUMN RIDGE TRAVEL TRAILERS



339BHTS with Granite interior.



339BHTS with Premier Package.

HIGH-END LOOK, YET AFFORDABLE.

Autumn Ridge is the most popular travel trailer series in Starcraft's wide array of model lines. There are 13 well-thought-out floorplans to choose from along with great options like fiberglass sidewalls.



BETTER FEATURES.

Autumn Ridge series comes with more standard features (see page 5 for a list of many popular items) and options. Shown here is our wireless backup camera system option. The wiring and prep comes standard.



339BHTS with Granite interior.



339BHTS with Granite interior.



LIVING ROOM.

Residential quality is an Autumn Ridge trait. Upgraded Dehco™ brand stain-resistant carpeting, upgraded decorative lighting, a quality sleeper sofa with arms, 4" taller and wider entry door, and much more adorn this upscale travel trailer series.

KITCHEN.

More upgrades here! Residential sink and faucet with pull-out sprayer, sink cover, double drawer with silverware dividers, 8 cu. ft. refrigerator and LED lighting under countertops are all standard on Autumn Ridge.

BEDROOM.

You'll find quality in every floorplan. For comfort, an upgraded mattress and Xtend-A-Bed (74" beds) are standard. The double-over-double bunks (278BH and 289BHS) are rated for 600 lb. each!

BATHROOM.

A standard radius corner shower (vs. competitors' neo-angle) is standard on select models. Other standards include honey-glazed cherry wood cabinetry, plenty of storage, genuine porcelain toilet (others use plastic) and more.

AUTUMN RIDGE TRAVEL TRAILERS



326TSI with Amaretto interior.



326TSI



326TSI



MORE STORAGE.

The large dinette and table convert into a spacious bed. And you'll find plenty of deep storage in these drawers located under the booth dinette seating.



ELECTRIC TONGUE JACK.

An electric power operated tongue jack is a great convenience feature. And dual 30-lb. propane tanks with cover are also part of the Show Stopper Package.



PREMIER PACKAGE.

Includes fiberglass front cap, front and rear electric stabilizer jacks, Denver Mattress® pillow top, and upgraded bedspread with shams.

UFO

UNBELIEVABLE FEATURES & OPTIONS.

POPULAR STANDARDS

- 5/8" tongue-and-groove plywood main floor decking
- 81" living room ceiling height
- Crowned truss roof rafters on 16" centers with 3/8" WALK ON decking
- Hardwood screwed-stile cabinet construction
- Magnum Roof System - 50% Stronger
- 30" x 72" radius-cornered main entry door with screen door
- Cable and satellite TV prep
- Digital antenna (TV/FM)
- Large folding grab handle
- StarMAXX Pass-Thru storage system: TPO composite flooring, dual tie down tracks, battery disconnect switch and ToyLok®
- Ball-bearing drawer guides, 50-lb. capacity with full-drawer extension
- Double-over-double bunk bed with 600-lb. bunk capacities (278BH and 289BHS)

POPULAR OPTIONS

- Porcelain toilet with foot-flush
- Ultra Plush Denver Mattress® bunk mats
- Oversized 21" oven
- Pots and pans drawer, below oven (select models)
- Residential-style "high rise" faucet with pull-out sprayer

CUSTOMER CONVENIENCE PACKAGE (MANDATORY)

SHOW STOPPER PACKAGE (MANDATORY)

PREMIER PACKAGE OPTION

- Fiberglass front cap
- Front and rear electric stabilizer jacks
- Denver Mattress® pillow top
- Upgraded bedspread with shams

POPULAR OPTIONS

- Medium LED TV
- Climate Package: Insulated, heated and enclosed underbelly and foil insulation in roof
- Climate Package with full-foil wrap
- Exterior fiberglass sidewalls (two-toned)
- Ledgestone fireplace with 39" TV (315RKS, 326TSI, 336FKSA, 346RESA)
- Roof ladder
- Solid-surface countertops with sink covers & pop-up USB and electrical receptacle
- Fan-Tastic® fan with vent cover in kitchen/living room
- Raised panel hardwood cabinetry in kitchen OHC & hardwood refrigerator door inserts

SPACE AGE CONSTRUCTION FEATURES.

For over 50 years Starcraft RV's reputation has been built around top-quality products. Each is designed to provide years of trouble-free use. Backed by a 2-year limited warranty, our innovation and quality start with a solid foundation. Compare and you'll see just how much care and meticulous attention to "doing it right" goes into every Starcraft.



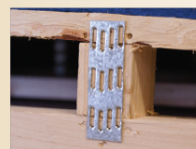
SEE THE FULL COMPARISON ONLINE AT STARCRAFTCAMPING.COM



US 4,500 lbs. on a Starcraft roof!



THEM Same weight on a competitor's style roof.



US Vertical wood studs for added support.



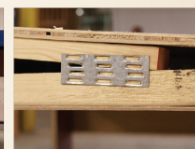
THEM Little aluminum brace, if that.

STRONGEST ROOF EVER!

Strength is one of the basic principles of engineering; the stronger something is built, the longer it will last. At Starcraft, we understand strength comes from within, which is why we focused on the smallest of details when constructing our exclusive Magnum Roof System. From sturdier vertical studs to 7" header beams, we pride ourselves on staying at the top of our game—building stronger products that last.



US We use large oversized nail plates on both sides.



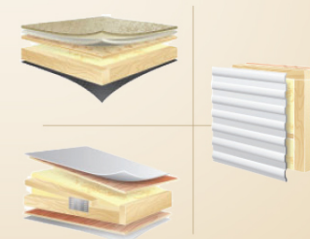
THEM They use smaller and only on one side of truss.



Our optional Climate Package extends your camping season and provides protection against cooler temperatures with its insulated, heated and enclosed underbelly. For additional protection, the optional full-foil wrap boosts your R-values to R-24 in the floor, R-19 in the walls and R-22 in the roof.

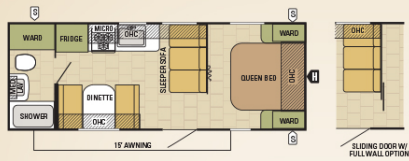
DURABLE CONSTRUCTION.

A firm foundation is built on 2"x3" floor joists with 5/8" tongue-and-groove plywood. The walls provide a long-lasting structure with 2"x2" wooden studs on 16" centers and .024 aluminum exterior siding. A one-piece seamless rubber roof membrane covers 4-1/2" arched trusses while 3/8" decking adds protection from the elements.

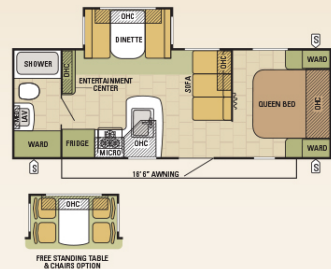


FOR FULL OPTIONS AND MORE STANDARD FEATURES GO TO starcraftcamping.com

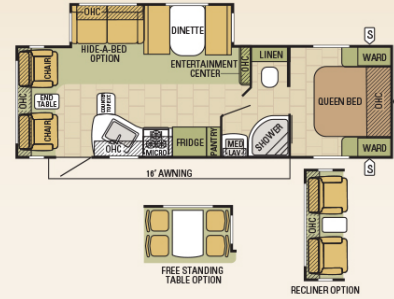
235FB | AUTUMN RIDGE



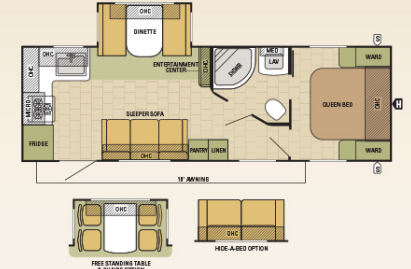
245DS | AUTUMN RIDGE



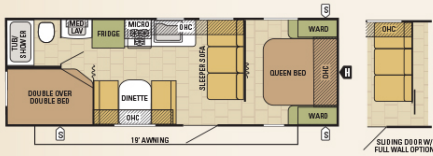
265RLS | AUTUMN RIDGE



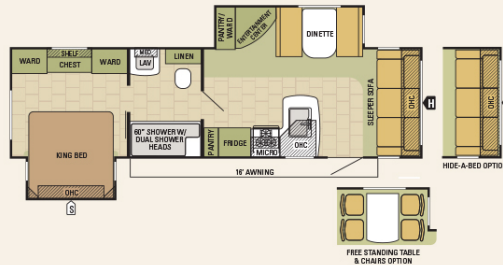
266RKS | AUTUMN RIDGE



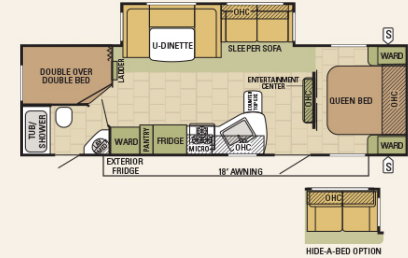
278BH | AUTUMN RIDGE



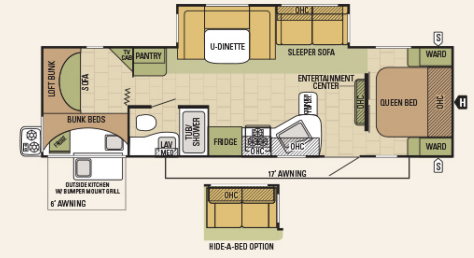
286KBS | AUTUMN RIDGE



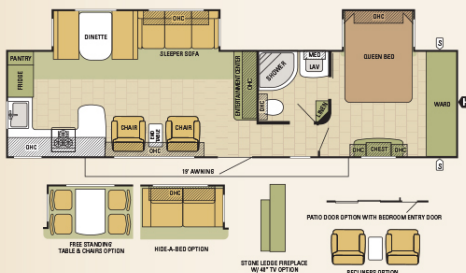
289BHS | AUTUMN RIDGE



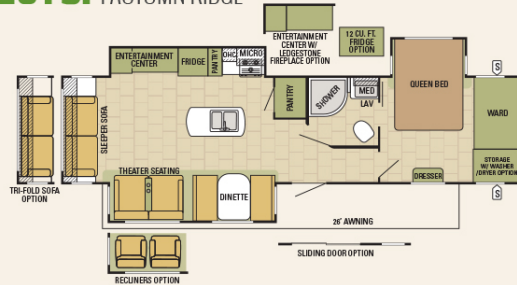
309BHL | AUTUMN RIDGE



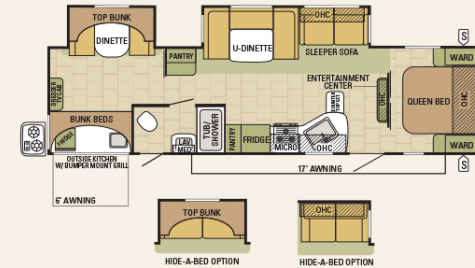
315RKS | AUTUMN RIDGE



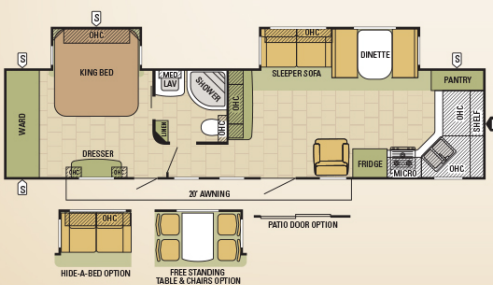
326TSI | AUTUMN RIDGE



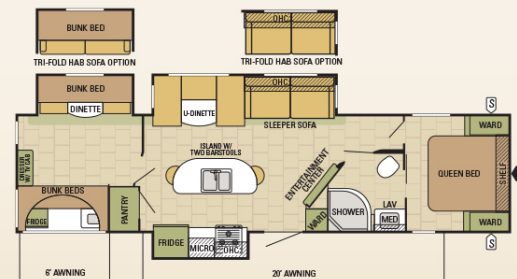
329BHU | AUTUMN RIDGE



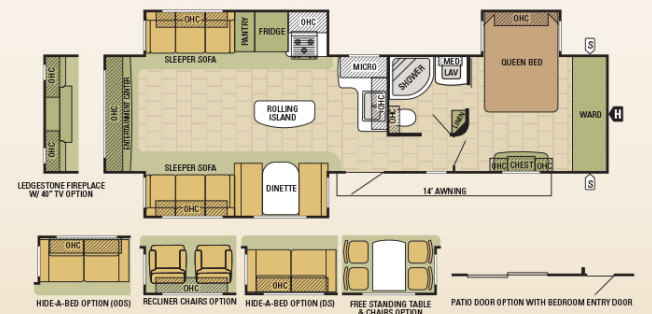
336FKSA | AUTUMN RIDGE



339BHTS | AUTUMN RIDGE



346RESA | AUTUMN RIDGE



COLOR CHOICES.

SEE YOUR STARCRAFT DEALER
FOR ACTUAL FABRIC, COLOR AND
TEXTURE SAMPLES.



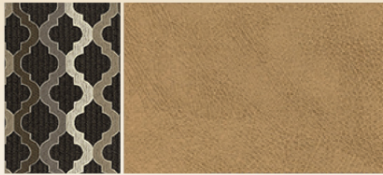
CABINETRY



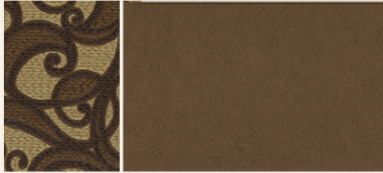
FLOORING



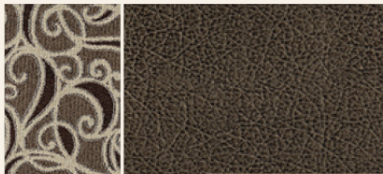
COUNTERTOPS



ALMOND



AMARETTO



GRANITE

STARMAXX™ PASS-THRU STORAGE SYSTEM.

All Autumn Ridge models come with our well-thought-out and convenient front storage compartment we call StarMAXX. It's an integrated pass-through storage area featuring many exclusive advantages like:

- TPO composite rubber floor
- Dual tie-down tracks
- Battery disconnect switch
- Lighting and switches
- Secure mounted ToyLok® for all of your personal belongings
- Insulated, lockable and sealed baggage doors.



SPECIFICATIONS

SPECIFICATIONS	235FB	245DS	265RLS	266RKS	278BH	286KBS	289BHS	309BHL	315RKS	326TSI	329BHU	336FKSA	339BHTS	346RESA
Unloaded Vehicle Weight (lbs.)	4220	5520	6364	5843	4645	7349	6521	7063	8103	8758	8001	8274	8796	8846
Dry Hitch Weight (lbs.)	465	500	665	590	450	840	675	735	1040	1255	800	945	800	1230
Gross Vehicle Weight Rating (lbs.)	6500	7500	8500	7750	7500	9500	8500	9250	9975	11000	9950	10500	10750	10750
Cargo Carrying Capacity (lbs.)	2240	1940	2096	1867	2815	2111	1939	2147	1832	2182	1909	2186	1894	1864
Exterior Length	26' 9"	27' 7"	30' 11"	29' 11"	29' 5"	33' 11"	31' 9"	33' 11"	37' 10"	37' 6"	36' 2"	38' 3"	37' 8"	38' 3"
Exterior Width	96"	96"	96"	96"	96"	96"	96"	96"	96"	96"	96"	96"	96"	96"
Exterior Height with A/C	127 1/2"	133 1/2"	135"	133 1/2"	128"	134"	135 1/4"	134"	133 3/4"	134"	134"	132 3/4"	134"	133 1/4"
Interior Height	81"	81"	81"	81"	81"	81"	81"	81"	81"	81"	81"	81"	81"	81"
Fresh Water Capacity (gals)*	68.6	68.6	68.6	68.6	68.6	68.6	68.6	68.6	68.6	68.6	68.6	68.6	68.6	68.6
Gray Wastewater Capacity (gals)	32.5	32.5	32.5	32.5	32.5	32.5	32.5	32.5	32.5	32.5	32.5	32.5	32.5	32.5
Black Wastewater Capacity (gals)	32.5	32.5	32.5	32.5	32.5	32.5	32.5	32.5	32.5	32.5	32.5	32.5	32.5	32.5
Sleeping Capacity	4-6	3-6	3-6	3-6	8-10	2-6	9-10	9-10	3-6	3-6	9-11	3-6	9-11	3-8

*Includes water heater. The weights of mandatory options are included in the UVW listed above, but optional packages are not included. See weight information details on the back of this brochure.

AUTUMN RIDGE. THE FUTURE OF CAMPING JUST GOT BRIGHTER!



LANDED IN 1964. Starcraft is one of the oldest and most respected names in the RV industry. In fact, we've been around since 1903. Back then, we made our name building livestock tanks and other metal farm equipment. In the 1920's, we added a variety of boats to our product lineup. And in 1964, we entered—and revolutionized—the modern camping industry.



2-YEAR WARRANTY. The Starcraft warranty is a manufacturer's limited warranty. Each Starcraft is warranted to the original purchaser for 24 months from the original date of purchase against defects in materials and workmanship. For a copy of the limited warranty with full terms and conditions, ask your local Starcraft RV dealer.



GET MORE OF WHAT YOU NEED IN CYBERSPACE. Explore more Starcraft RVs by visiting our world-class website. This advanced, digital-age-friendly site offers more product photo galleries, construction information, videos, the latest floorplans, specifications and other great features to assist you. Find your closest dealer, customer service info and more!

STARCRAFTCAMPING.COM

ROADSIDE ASSISTANCE. Travel worry-free with the complimentary one-year Roadside Assistance program through a third-party provider, which gives you immediate access to dependable roadside assistance with a simple phone call. Check with your local dealer to learn more (available at participating dealers).

eco advantage™

SAVING THE PLANET. The Starcraft EcoAdvantage™ is our company's commitment to protecting the environment. Through smart sustainability efforts, we're creating better ways to build better RVs using fewer or renewable natural resources. This is our commitment to you—to build a better RV so that we can do a better job of protecting our planet. Learn more at StarcraftCamping.com/EcoAdvantage.

SEE YOUR LOCAL STARCRAFT DEALER:

STARCRAFT®

THE FUTURE OF CAMPING | pure and simple.

536 Michigan Street
Topeka, IN 46571 USA

Phone: (800) 945-4787
Web: starcraftcamping.com

**FOR INTELLIGENT LIFE
FOLLOW US ON:**



Unloaded Vehicle Weight (UVW): Sometimes referred to as "Dry Weight," UVW means the typical weight of this trailer as built at the factory. The UVW, as used in product literature and other promotional materials, does not include cargo, fresh water, propane, options or dealer-installed accessories. **Gross Vehicle Weight Rating (GVWR):** GVWR means the maximum permissible weight of the trailer, including the UVW plus passengers, personal items, all cargo, fluids, options, and dealer-installed accessories. The GVWR is equal to or greater than the sum of the UVW and the CCC. **Cargo Carrying Capacity (CCC):** CCC means the maximum weight of all passengers, personal items, food, fresh water, propane, tools, other cargo and dealer-installed accessories that can be carried by the trailer. CCC is equal to or less than GVWR minus UVW. The addition of options will decrease the CCC. **Hitch Weight (HW):** The hitch weight, as used in product literature and other promotional materials, does not include cargo, fresh water, propane gas, options or dealer-installed accessories. The addition of these types of items will either add to or subtract from the stated hitch weight. It is important for your safety and enjoyment that your tow vehicle be adequately sized and equipped to tow and handle the GVWR of the RV you select. Review weights and rating of your tow vehicle and consult a competent advisor for questions or advice. Whether you are new to RVing or a veteran, get a feel for the performance of your tow vehicle before heading out on the roadways. When you tow an RV, you must drive differently than when you drive a single vehicle. Practice hooking up, driving, backing up and braking in a safe environment or seek out professional instruction. Starcraft affixes a weight label to each RV which lists weight information for that vehicle. See specifications chart on the respective pages of this brochure.

All information contained in this brochure and on the Starcraft RV website is the latest available and is correct to the best of our knowledge at the time of publication approval. Starcraft reserves the right to make changes and to discontinue models without notice or obligation. Photography may show optional equipment or props used for decoration purposes only. RVs built for sale in Canada may differ to conform to Canadian codes. Check with your Starcraft dealer for the latest in specifications, standard and optional equipment. 01/16

© 2016 STARCRAFT RV, INC.