

Pursuit
BY COACHMEN

Pursuit

BY COACHMEN



**Coachmen**[®]
A division of Forest River, Inc.

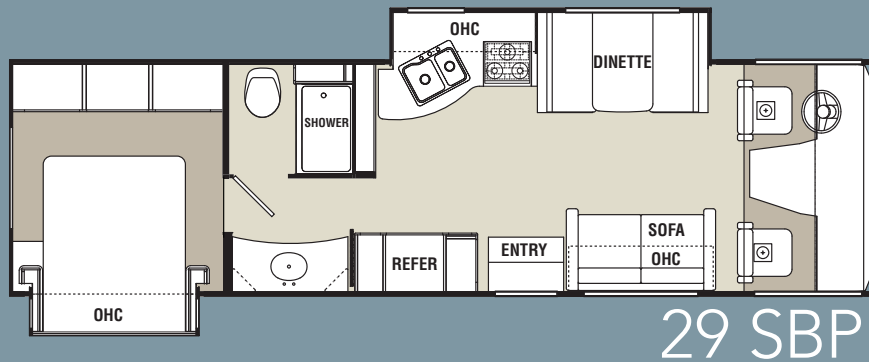


- A. Each Pursuit comes standard with an electric drop-down bunk for additional sleeping capacity.
- B. The Horseshoe booth dinette (31BDP) converts easily for comfort sleeping.
- C. The hidden pull out pantry provides extra counter space in all models.
- D. Each Pursuit comes equipped with a broom and coat closet.
- E. Don't track in dirt! Store shoes in the lighted Mud Room located conveniently just inside the step well.
- F. More storage hidden behind the Swing-out TV (31BDP) adds to the already spacious kitchen storage.
- G. Take advantage of the over-sized exterior compartments of the Pursuit.



Each Pursuit is **Pet-Friendly**. A feeding station and a floor-line window will give your pet their own unobstructed view of the great outdoors.

MODEL NO	29 SBP	31 BDP	33 BHP
GVWR	18,000lb	18,000lb	18,000lb
GCWR	23000 Lbs	23000 Lbs	23000 Lbs
Wheel base	208"	208"	208"
Unit Length	32' 6"	32' 6"	33'
Exterior Height	11' 11"	11' 11"	11' 11"
Exterior Width	102"	102"	102"
Interior Height	84"	84"	84"
Awning Size	18'	18'	12'
Fuel Tank (Gal)	80	80	80
L.P. GAL	20.3	20.3	20.3
Fresh / Waste / Grey Water (Gal)	50 / 45 / 45	50 / 45 / 45	50 / 45 / 45
Water Heater (Gal)	6	6	6
Sleeping positions	6	6	6



GVWR (Gross Vehicle Weight Rating):
The maximum permissible weight of the unit, including the unloaded vehicle weight (UVW) plus all fluids, cargo, optional equipment and accessories. For safety and product performance, do not exceed the GVWR.

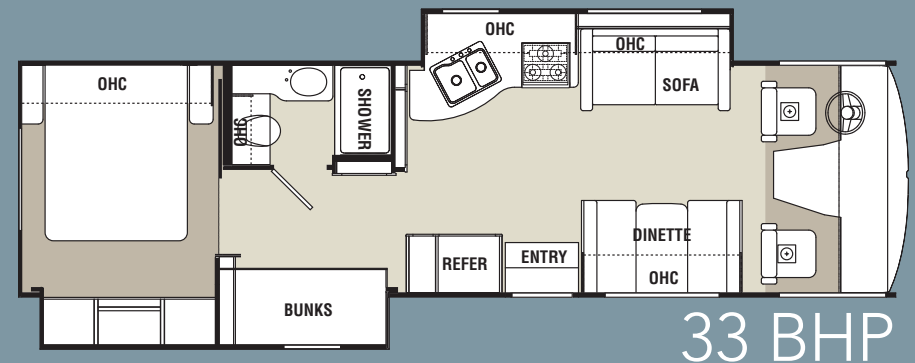
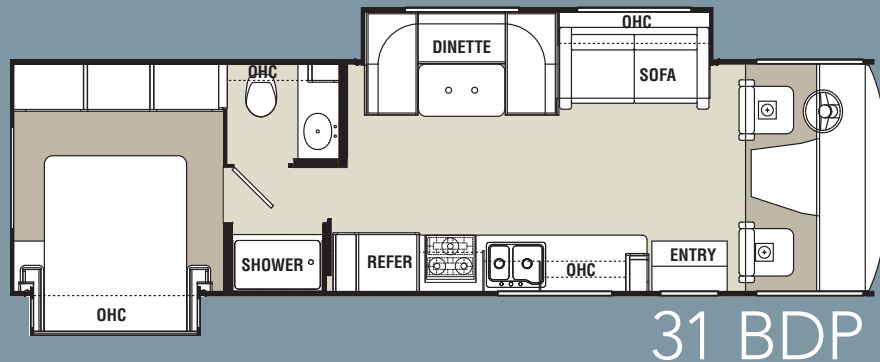
GCWR (Gross Combined Weight Rating):
The maximum total weight of the loaded unit, plus a tow vehicle. This includes the weight of both the unit and tow vehicle, fuel for each, all other fluids, cargo, occupants, optional equipment and accessories.

Important Note: All capacities are approximate, and all dimensions are nominal. Coachmen motorhomes are designed to allow for a wide variety of uses, extended trips with two people or short trips with multiple people. Accordingly, each unit allows ample room for sleeping, seating, fluids and cargo. While the customer is the beneficiary of this design, the customer also bears the responsibility to select the proper

combination of passengers, cargo, load, and tow vehicle without exceeding the chassis weight capabilities. Consumer may need additional braking capacity to tow loads greater than 1,000 pounds.

Seat belts should always be worn for passenger safety. Seat belts are provided at most locations to allow convenience in selecting which seat to occupy. However, it is not intended that all seating positions equipped with a seat belt may be occupied while the vehicle is in motion, without regard to other weight factors.

All Coachmen motorhomes are designed to ensure that the number of passengers allowed while the vehicle is in motion will always at least equal the stated sleeping capacity. Though extra seat belts may be provided, for your safety and the proper operation of your vehicle, limit your passengers to the number allowed by the Net Carrying Capacity of your vehicle.



Standard Features

INTERIOR APPOINTMENTS

Power Bunk System
Cognac Maple Cabinetry
Laminate countertops throughout
Congoleum Linoleum Throughout
Antique Nickel Hardware
Hardwood Cab Doors/flat panel
Reclining / Swivel Pilot Seats
Soft Touch Jackknife Sofa
Mini-Blinds in Living Room/ Kitchen
Residential Curtains in Bedroom
Standard Booth Dinette (29SBP)
Horseshoe Booth (31BDP only)

INTERIOR EQUIPMENT

Radio AM/FM/CD
LP Leak Alarm and Smoke Detector
Carbon Monoxide Detector
Fire Extinguisher
32" LCD TV coach
Message Center (white board and cork)
Broom Closet
Mud Room at Stepwell
Pet Feeding Center

Pantry
Pull out Pantry with counter top

GALLEY

Range Hood w/Light
Flush Mount, Double Door Ref
Single Lever High Kitchen
Faucet w/ Sprayer
Double Bowl Kitchen Sink
3-Burner Range
Microwave Oven

BATH AND WATER

Porcelain Toilet w/Foot Flush
One Piece ABS shower
Surround
Upgrade Shower curtain
Power Bath Vent
6-Gallon (gas) D.S.I Water Heater

SLEEPING

Queen Bed 60W X 74L
Pre-wired for power vent

ELECTRICAL//HEATING/AC

30'-30amp Power Cord
55 amp Converter w/
Distribution Panel
GFI Circuit
Outside recept

Emergency Start Switch
Patio Light
30,000 BTU E.I. Furnace
15,000 BTU Roof Air
Conditioner-Ducted
Single Coach Battery
4.0 Generator ONAN
Coach Command Center
Heated Holding Tank
Compartment
Exterior Cable TV Jack

AUTOMOTIVE/EXTERIOR

18,000# Ford Chassis
Passenger Side Safety Window
Mega Rear Storage (N/A 33BHP)
Dash Air Conditioning
Cab Privacy Shades
Back Up Monitor
Rear Mud Flaps Only
Power Entrance Step-Single
Crowned, Laminated TPO Roof
Radius Trunk Doors
Fiberglass Front Cap
Dead Bolt Lock-Entrance Door
Radius Entry Door
Power Patio Awning
5,000 Towing Hitch w/7 Way Plug
Rear Mounted Roof Ladder

Exterior Mirrors
Rear Bumper
Stainless Steel Wheel Liners
Slide-out room awning(s)
20 Gallon LP Tank

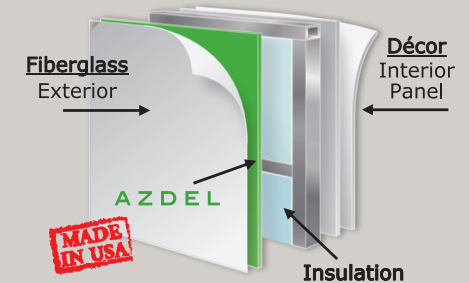
OPTIONS

Tan Colored Glass
FULL PAINT
Burgandy Blaze
Sapphire Blue
Nevada Sand
Ivory Coast
Bedroom TV
Fantastic Vent in Bedroom
Side Cameras
Power Heated Mirrors
Automatic Leveling Jacks
(¹)DIAMONDSHIELD
(req. w/ full paint)
(¹)CSA Upfit
CD-MVSA (Canadian Motor
Vehicle Safety Act)
RVID (Mandatory TX, CA and FL)
Travel Easy Roadside Assistance
(Coach-Net)

Notes: (¹) Mandatory For All
Canadian Provinces

RV SIDEWALL CUT-AWAY Lighten Your Adventure:

Featuring
AZDEL
ONBOARD™
COMPOSITE SIDEWALLS



Coachmen RV uses Azdel Composite Panels to replace wood in RV Sidewalls. Azdel Panels are impervious to water: **No Rot, Mold or Water Damage.** Azdel Panels are constructed using a blend of polypropylene and fiberglass, creating an extremely strong, lightweight and water resistant sidewall.



Forest River, Inc. encourages our customers to purchase their Forest River products from a local dealership whenever possible for the following reasons:

- 1) Forest River, Inc. dealers are independently owned and operated businesses so priority service and scheduling is at their discretion and is often provided to customers that purchased their unit at that dealership.
- 2) Purchasing locally allows customers to establish meaningful relationships with a dealer, enhancing the RV experience through assistance with product questions, user tips or RV regulations for your state or country, and much more!
- 3) Canadian customers must meet requirements to bring an RV purchased out of the country to their home. These requirements may involve additional inspections and certifications, taxes and fees. Your local Canadian Dealer is a professional at meeting these requirements.
- 4) Scheduling timely warranty repairs and adjustments through a local dealership provides far greater flexibility and convenience to you, the customer!

It is the goal of Forest River, Inc. that all of our RV owners fully enjoy the RV experience and that customer satisfaction meets or exceeds their expectations!

FREE One Year Membership – Coachmen Owners Association!



Coachmen is proud to sponsor the largest manufacturer sponsored camping club in North America ... Coachmen Owners' Association (COA). COA provides you a world of ways to enjoy your RV. This is FUN ON OVERDRIVE and provides: Free Trip Routing, Exciting Tours & Rallies, Free Campground Directory, Local/State Club Activities, Easy RVing Magazine Free, Theme Park Discounts, Fuel Discounts, and Much More! Every new Coachmen RV buyer is eligible for a 1 Year FREE membership in the Coachmen Owners' Association. It all adds up to an easy ownership experience!



Coachmen RV, a Division of Forest River Inc.,
A Berkshire Hathaway Company
423 N. Main St., P.O. Box 30, Middlebury, IN 46540

www.coachmenrv.com

All information contained in this brochure is believed to be accurate at the time of publication. However, during the model year, it may be necessary to make revisions and Coachmen reserves the right to make all such changes without notice, including prices, colors, materials, equipment and specifications as well as the addition of new models and the discontinuance of models shown in this brochure. Therefore, please consult with your Coachmen dealer and confirm the existence of any materials, design or specifications that are material to your purchase decision.

Travel Easy™ Roadside Assistance



RVing is easier with Coachmen's Travel Easy™ Roadside Assistance provided FREE the first year of ownership to those who purchase a New Coachmen RV. Administered by Coach-Net, this service provides you with 24/7 operational, technical and emergency road service coverage. Also included is towing, fuel delivery, jump starts, lockout service, tire changes, mobile mechanic and unlimited technical assistance. Anywhere. Anytime. Travel Easy™ is the security of knowing that help is an easy phone call away.



Learn More
Scan this barcode using
a QR Reader on your
smart phone to learn
more about Forest River.



A Berkshire Hathaway company.