

# KODIAK



KODIAK

**Where Ultra-Lite Meets Luxury**









Kodiak Ultra-Lite  
Model 276BHSL in Buckshot

## Premium Entertainment System

Kodiak's premium entertainment system features an AM/FM /CD/DVD player with MP3 input. Interior and exterior speakers are also included. The flat screen LCD HD TV is an optional feature.



## Central Control Station

All switches and monitor panel centrally located for easy use.



Kodiak Ultra-Lite  
Model 276BHSL

Kodiak is the leader in ultra-lite technology. With units light enough to be towed by most SUV's minivans, crossovers and light trucks, we're sure to have the model that best fits your family's needs.

But, just because Kodiak is an ultra-lite doesn't mean it's light on storage or features. With spacious countertops, well-designed cabinets and oversized pass-thru exterior storage compartments, it's easy to take everything along on your next adventure.

# KODIAK



Model 276BHSL



Model 276BHSL



Model 299BHSL

Kodiak's all-new custom cabinetry design increases storage space by over 40%! Overhead cabinets are wider, taller and deeper. Plus, our exclusive countertops offer more usable space.

Solid surface countertop with stainless steel sink and pullout faucet, extra deep storage drawers, dedicated pots and pans storage, plus full-extension steel roller ball bearing drawer guides are standard on all Kodiaks.

You'll appreciate Kodiak's large hanging wardrobe space, dual reading lights, and upgraded Evergreen super-comfortable mattress with designer bedding package.



Model 279RBSL



Model 276BHSL



Model 276BHSL





Model 299BHSL

Kids really enjoy the 299BHSL's convertible bunk/sofa. Opposite, there's an overhead bunk with ladder, as well as ample storage for toys and clothes.



Model 299BHSL Sofa and Bunk



Model 299BHSL Sofa



Model 279RBSL



Model 299BHSL

Spacious bathroom with large bathtub, shower surround with sliding glass doors, large linen closet and skylight.



Model 299BHSL



Bunk Beds  
Model 276BHSL



Bunk Room Storage  
Model 276BHSL

Quad bunk with full dinette and hanging wardrobe with three full-size drawers.



## AERODYNAMIC PROFILE



## ULTRA-LITE DESIGN MEANS BETTER FUEL ECONOMY

Kodiak is specifically designed to be towed by most light trucks and sport utility vehicles. The aerodynamic profile pushes air up the front wall and over the roof, improving towing ease and fuel economy.

## ENCLOSED AND HEATED UNDERBELLY

Kodiak's enclosed and heated underbelly prevents water tanks from freezing, and protects the tanks and floor from road damage.



Spray Port



Detachable Power Cord



Outside Kitchen

Model 299BHSL



Slam Latch  
Doors



Pass-thru Storage

## BEAR CAVE STORAGE

Kodiak's Bear Cave pass-thru V-shaped cargo compartment is the largest offered by any ultra-lite. Our unique design increases storage volume by 30%.

*With Kodiak, you can take it with you!*

## POPULAR OPTIONS



Flat Screen  
HDTV



Aluminum  
Rims



Front  
Jack



# BEAR CAGE CONSTRUCTION

## ROOF - 5" THICK TRUSS STYLE ALUMINUM FRAME CONSTRUCTION

- 1 TPO Roof with 12 Year Manufacturer's Warranty
- 2 Luan Wood Backer
- 3 Tubular Aluminum Welded Framed Roof
- 4 High Density Structural Foam
- 5 Decorative Ceiling Finish
- 6 13,500 BTU Roof Ducted A/C
- 7 A/C Ducting System with Taped Seams

## FLOOR - FULLY LAMINATED WELDED ALUMINUM FRAME CONSTRUCTION

- 1 Residential Carpeting in Slide Room
- 2 Beauflor® Flooring -10 Year Warranty
- 3 Dual Layers of Floor Decking
- 4 Tubular Welded Aluminum Framed Floor
- 5 High Density Structural Foam
- 6 Polypropylene Waterproof Vapor Barrier

## CHASSIS - STEEL I-BEAM POWDER COATED CHASSIS

- 1 Folding Entry Steps
- 2 Four Corner Stabilizer Jacks
- 3 Large Heated Tanks Mounted Below Floor
- 4 "Polar Package" Enclosed and Heated Underbelly (N/A Express)
- 5 Radial Tires
- 6 Easy-Lube Hubs
- 7 LP Tanks with ABS Cover

## WALLS - FULLY LAMINATED, WELDED ALUMINUM FRAME CONSTRUCTION

- 1 High Gloss Fiberglass Exterior
- 2 Luan Wood Backer
- 3 Tubular Aluminum Welded Frame Walls
- 4 High Density Structural Foam Insulation
- 5 Decorative Wall Finish
- 6 Tinted Safety Glass Windows
- 7 Insulated Baggage Doors with Slam Latches (N/A Express)
- 8 TPO Fender Skirts
- 9 XL-Folding Entry Assist Handle (N/A Express)
- 10 Aerodynamic Front Profile for Better Fuel Economy
- 11 Diamond Plate Rock Guard
- 12 Adjustable Power Awning

### 5-WAY LAMINATION

### 6-WAY WELDED ALUMINUM SUPER STRUCTURE

### R11 ROOF & FLOOR R7 WALLS

## REAL WEIGHTS!

Did you know that every unit is weighed as it leaves the production line? Our certified Acu-Weight even includes options! Most competitors publish only a base weight that doesn't include options. Make sure that you know what the *real weight* is before you buy your next ultra-lite.



## DECOR CHOICES



Peppercorn



Buckshot



Rullio Eggplant

# KODIAK

## TRAVEL TRAILERS

8' WIDES



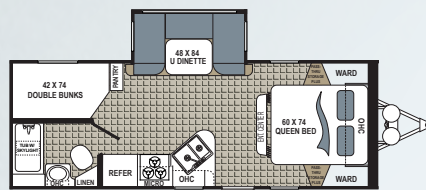
Model  
263RLS



### 200QB

Unloaded Weight (lbs) . 3,804  
Hitch Weight (lbs).....322  
Cargo Capacity (lbs) ... 1,596  
Overall Height w/AC ... 10'  
Overall Length ..... 24' 2"

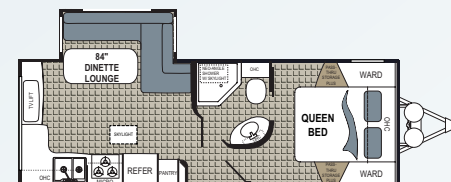
\*Fresh Water Capacity .... 52  
Black Water Tank(s) ..... 28  
Grey Water Tank(s)..... 39  
Tire Size.....ST205/75R15(C)  
Furnace BTU Output .. 19,000



### 240BHSL

UVW ..... TBD  
Hitch..... TBD  
Cargo ..... TBD  
Overall Height ..... TBD  
Overall Length ..... 26' 11"

\*Fresh Water Capacity .... 52  
Black Water Tank ..... 28  
Grey Water Tank ..... 39  
Tire Size.....ST205/75R15(C)  
Furnace BTU Output .. 30,000

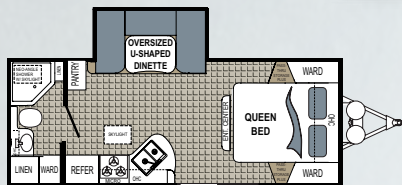


### 242RESL

Unloaded Weight (lbs) . 4,935  
Hitch Weight (lbs).....505  
Cargo Capacity (lbs) ... 1,665  
Overall Height w/AC ... 10' 7"  
Overall Length ..... 27' 7"

\*Fresh Water Capacity .... 52  
Black Water Tank(s) ..... 22  
Grey Water Tank(s)..... 39  
Tire Size.....ST205/75R15(C)  
Furnace BTU Output .. 30,000

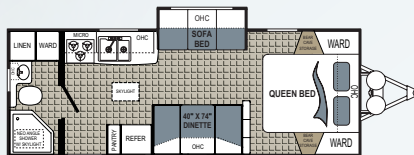
FLOORPLANS START AT ONLY 3000 LBS.



### 221RBSL

UVW ..... 4,542  
Hitch..... 555  
Cargo ..... 1,458  
Overall Height ..... 10' 8"  
Overall Length ..... 24' 8"

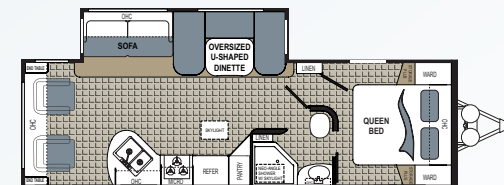
\*Fresh Water Capacity .... 52  
Black Water Tank ..... 28  
Grey Water Tank ..... 39  
Tire Size.....ST205/75R15(C)  
Furnace BTU Output .. 19,000



### 241RBSL

Unloaded Weight (lbs) . 4,427  
Hitch Weight (lbs)..... 426  
Cargo Capacity (lbs) .... 1,573  
Overall Height w/AC ..... 10'  
Overall Length ..... 27' 2"

\*Fresh Water Capacity .... 52  
Black Water Tank(s) ..... 28  
Grey Water Tank(s)..... 39  
Tire Size.....ST205/75R15(C)  
Furnace BTU Output .. 19,000



### 263RLS

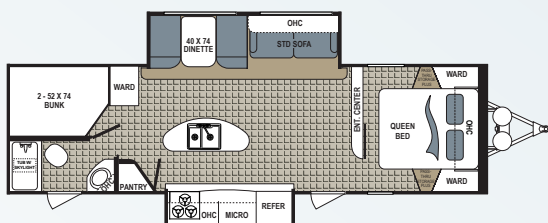
Unloaded Weight (lbs) . 5,783  
Hitch Weight (lbs)..... 670  
Cargo Capacity (lbs) ... 1,817  
Overall Height w/AC ... 10' 7"  
Overall Length ..... 31'

\*Fresh Water Capacity .... 52  
Black Water Tank(s) ..... 28  
Grey Water Tank(s)..... 39  
Tire Size.....ST205/75R15(C)  
Furnace BTU Output .. 30,000



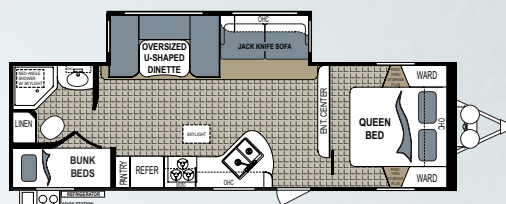


Model  
290BHSL



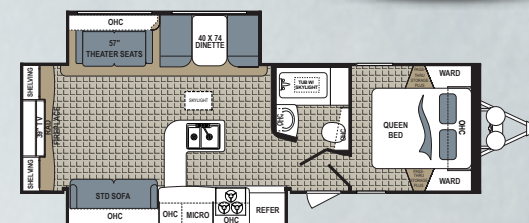
## 276BHSL

UVW ..... 6,577 \*Fresh Water Capacity .... 52  
 Hitch ..... 989 Black Water Tank ..... 28  
 Cargo ..... 1,023 Grey Water Tank ..... 67  
 Overall Height ..... 10' 11" Tire Size ..... ST205/75R15(C)  
 Overall Length ..... 33' 8" Furnace BTU Output .. 30,000



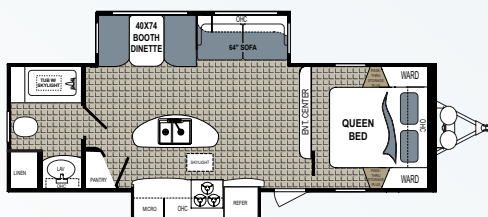
## 284BHSL

Unloaded Weight (lbs) . 5,799 \*Fresh Water Capacity .... 52  
 Hitch Weight (lbs) ..... 712 Black Water Tank(s) ..... 28  
 Cargo Capacity (lbs) ... 1,801 Grey Water Tank(s) ..... 39  
 Overall Height w/AC ... 10' 7" Tire Size ..... ST205/75R15(C)  
 Overall Length ..... 31' 10" Furnace BTU Output .. 30,000



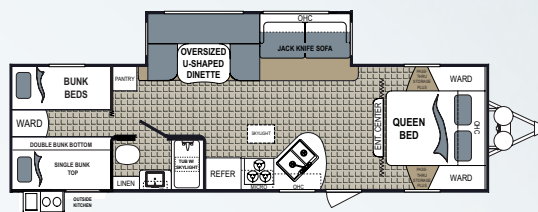
## 291RESL

UVW ..... 6,490 \*Fresh Water Capacity .... 52  
 Hitch ..... 710 Black Water Tank ..... 28  
 Cargo ..... 2,410 Grey Water Tank ..... 56  
 Overall Height ..... 11' 1" Tire Size ..... ST225/75R15(D)  
 Overall Length ..... 32' 4" Furnace BTU Output .. 30,000



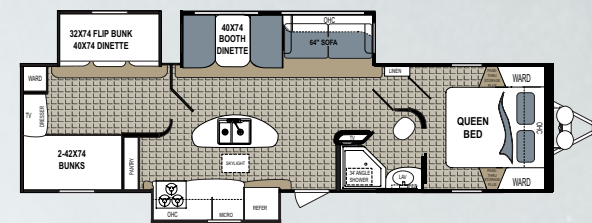
## 279RBSL

UVW ..... 5,941 \*Fresh Water Capacity .... 52  
 Hitch ..... 783 Black Water Tank ..... 28  
 Cargo ..... 1,659 Grey Water Tank ..... 67  
 Overall Height ..... 10' 10" Tire Size ..... ST205/75R15(C)  
 Overall Length ..... 30' 8" Furnace BTU Output .. 30,000



## 290BHSL

Unloaded Weight (lbs) . 5,939 \*Fresh Water Capacity .... 52  
 Hitch Weight (lbs) ..... 765 Black Water Tank(s) ..... 28  
 Cargo Capacity (lbs) ... 1,661 Grey Water Tank(s) ..... 39  
 Overall Height w/AC ... 10' 7" Tire Size ..... ST205/75R15(C)  
 Overall Length ..... 33' 4" Furnace BTU Output .. 30,000

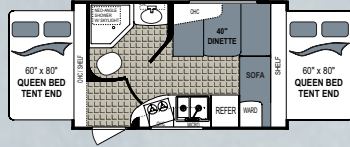


## 300BHSL

UVW ..... 7,531 \*Fresh Water Capacity .... 52  
 Hitch ..... 833 Black Water Tank ..... 28  
 Cargo ..... 1,369 Grey Water Tank ..... 67  
 Overall Height ..... 10' 11" Tire Size ..... ST225/75R15(D)  
 Overall Length ..... 36' 11" Furnace BTU Output .. 30,000

# KODIAK EXPRESS

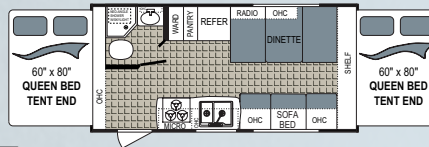
## 8' WIDES



### 166E

Unloaded Weight (lbs) ..3,110  
Hitch Weight (lbs).....490  
Cargo Capacity (lbs) .....640  
Overall Height w/AC ....9' 10"  
Overall Length .....17' 9"

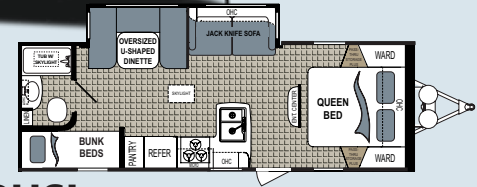
\*Fresh Water Capacity .....52  
Black Water Tank(s) .....28  
Grey Water Tank(s).....39  
Tire Size..... ST205/75R14(C)  
Furnace BTU Output .. 19,000



### 186E

Unloaded Weight (lbs) ..3,588  
Hitch Weight (lbs).....396  
Cargo Capacity (lbs) ....1,412  
Overall Height w/AC ....9' 10"  
Overall Length .....20' 8"

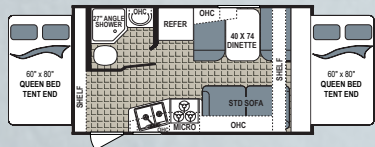
\*Fresh Water Capacity .....52  
Black Water Tank(s) .....22  
Grey Water Tank(s).....39  
Tire Size..... ST205/75R14(C)  
Furnace BTU Output .. 19,000



### 255BHSL

UVW .....4,676  
Hitch.....493  
Cargo .....1,924  
Overall Height.....10' 5"  
Overall Length .....28' 4"

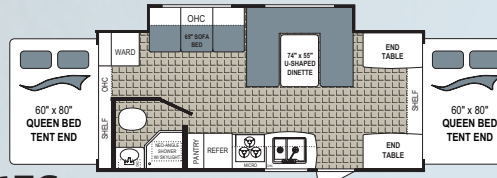
\*Fresh Water Capacity .....52  
Black Water Tank(s) .....28  
Grey Water Tank(s).....39  
Tire Size..... ST205/75R14(C)  
Furnace BTU Output .. 19,000



### 172E

UVW .....3,108  
Hitch.....284  
Cargo .....742  
Overall Height .....10'  
Overall Length .....18' 6"

\*Fresh Water Capacity .....52  
Black Water Tank .....28  
Grey Water Tank .....39  
Tire Size..... ST205/75R14(C)  
Furnace BTU Output .. 19,000



### 216ES

Unloaded Weight (lbs) ..4,243  
Hitch Weight (lbs).....536  
Cargo Capacity (lbs) ....1,257  
Overall Height w/AC ....9' 10"  
Overall Length .....23' 11"

\*Fresh Water Capacity .....52  
Black Water Tank(s) .....22  
Grey Water Tank(s).....39  
Tire Size..... ST205/75R14(C)  
Furnace BTU Output .. 19,000



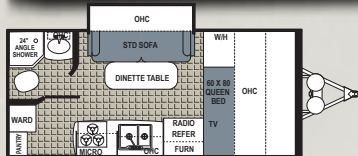
### 283BHSL

UVW .....5,376  
Hitch.....732  
Cargo .....1,224  
Overall Height.....10' 7"  
Overall Length .....32'

\*Fresh Water Capacity .....52  
Black Water Tank(s) .....28  
Grey Water Tank(s).....39  
Tire Size..... ST205/75R14(C)  
Furnace BTU Output .. 30,000



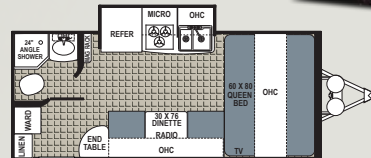
## 7' WIDES



### 163QBSL

UVW .....3,213  
Hitch.....360  
Cargo .....1,487  
Overall Height .....10'  
Overall Length .....19' 7"

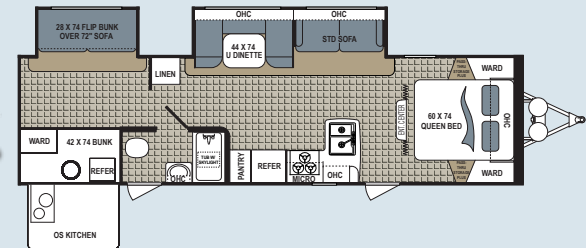
\*Fresh Water Capacity .... 52  
Black Water Tank ..... 28  
Grey Water Tank ..... 39  
Tire Size..... TBD  
Furnace BTU Output .. 19,000



### 173QBSL

UVW .....3,213  
Hitch.....394  
Cargo .....1,409  
Overall Height .....10'  
Overall Length .....20' 5"

\*Fresh Water Capacity .... 52  
Black Water Tank ..... 28  
Grey Water Tank ..... 39  
Tire Size..... TBD  
Furnace BTU Output .. 19,000



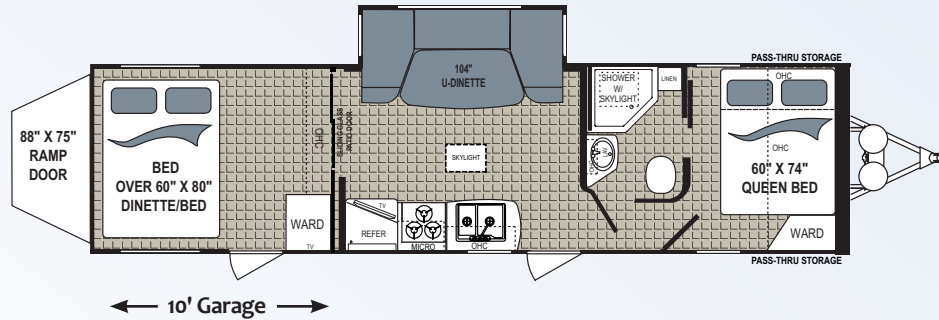
### 299BHSL

UVW .....6,290  
Hitch.....772  
Cargo .....1,310  
Overall Height .....10' 9"  
Overall Length .....34' 11"

\*Fresh Water Capacity .....52  
Black Water Tank .....28  
Grey Water Tank .....39  
Tire Size..... ST205/75R14(C)  
Furnace BTU Output .. 30,000



# TOY HAULER



## 292TQB

Unloaded Weight (lbs) ... 6,891  
 Cargo Capacity (lbs) ..... 2,789  
 Hitch Weight (lbs) ..... 1,056  
 Overall Length ..... 35' 6"  
 Overall Height w/AC ..... 11'  
 \*Fresh Water Capacity ..... 46  
 Black Water Tank(s) ..... 28  
 Grey Water Tank(s) ..... 67  
 Tire Size ..... ST225/75R15(D)  
 Furnace BTU Output .... 30,000

Spring Assist Ramp Door  
 3000 Lb. Capacity  
 Pulldown Screen Option



# KODIAK STANDARD AND OPTIONAL FEATURES

## External Features

Steel Rims  
Easy Lube Axles  
Spare Tire, Carrier, & Cover  
Diamond Plate  
Enclosed Underbelly  
Tinted Safety Glass Windows  
Frameless Windows - Standard on all Kodiak  
& Kodiak Express  
Outside Speakers  
Hitch Light (N/A Express)  
Patio Light  
Bedroom Roof Vent (N/A Express)  
Stab Jacks  
Electric Awning  
LP Cover (N/A Express)  
20 LB Bottles  
Exterior Spray Port (N/A Express)  
LP Quick Disconnect  
Extended Downspouts  
TV Antenna  
Deluxe Folding Entry Assist Handle  
(N/A Express)  
Standard Exterior Grab Handle (Express,  
Expandable)  
Double or Triple Entry Step  
Slam Latch Baggage Doors (N/A Express)  
28x18 Standard Doors (Express,  
Expandable where Applicable)  
Limited Graphics (Express, Expandable)  
Full Graphics Package (N/A Express)  
Standard Bunk Mats (Express, Expandable)

## External Features (continued)

Upgraded Bunk Mats  
6" I Beam (Express, Expandable, Standard  
Kodiak where Applicable)  
8" I Beam (Standard Kodiak where  
Applicable)  
46 Gallon Fresh Water Capacity  
28 Gallon Black Tank  
39 Gallon Grey Tank  
Radial Tires  
Window in Door (N/A Express)  
Taupe Fiberglass (N/A Express)  
Two Tone White Fiberglass (Express,  
Expandable)

## Options

Aluminum Rims  
19", 26", 32", or 39" LCD/HD TV  
(N/A Express)  
Tri Fold Sofa (N/A Express)  
Table and Chairs (N/A Express)  
Black Tank Flush (N/A Express)  
King Cool Sofa Lounge (N/A Express)  
Outside BBQ Grill (N/A Express)  
15" Aluminum Wheels (N/A Express)  
Electric Tongue Jack (N/A Express)  
15K Air Conditioner

## Interior Features

Beauflor® Flooring  
Night Shades Throughout  
Wallpaper Border in Living Area  
Flip Sofa  
Bath Skylight  
Tub Surround w/Shelf  
Medicine Cabinet w/Mirror  
12V Exhaust Bath Fan  
Valance Legs (N/A Express)  
3 Burner Range w/Oven  
Range Hood w/12V Fan/Light  
6 Gallon Gas/Electric/DSI Water Heater  
(N/A Express)  
6 Gallon DSI/Gas Water Heater  
(Express, Expandable)  
AM/FM/CD Player (Express, Expandable)  
Jensen Radio  
Cable TV Hookup w/Booster  
Bedroom TV Hookup w/LCD Backer  
(Express, Standard)  
Microwave  
13.5K A/C Non-Ducted (Expandable)  
13.5K ASA A/C (Express, Expandable)  
13.5K A/C Ducted (Standard Kodiak  
Where Applicable)  
6 CU FT Double Door Refer  
Black Refer Insert  
Foot Flush Toilet  
Sink Cover (N/A Express)  
Solid Surface Countertop (N/A Express)  
Formica Countertop (Express, Expandable)

## Interior Features (continued)

Peppercorn/Egg Plant/ Buckshot  
Accent Vinyl Fabrics  
Accent Cloth Fabrics (Express, Expandable)  
Maple Cherry Glazed Cabinets  
Hard Door Bedroom Separation  
(Standard Kodiak Where Applicable)  
Soft Curtain Bedroom Separation  
(Express, Expandable)  
Schwintech Slide System (Where  
Applicable)  
Non-Opening Window in Slide Room  
End (Express, Expandable)  
Opening Window in Slide Room End  
(N/A Express)  
145" Slide Room (Express, Expandable)  
152" Slide Rooms (N/A Express)



**Scan our quick response  
code to open our website,  
and explore the many  
products we have to offer!**



**P.O. BOX 2164 • 2164 Caragana Court  
Goshen, Indiana 46527**

**Sales: 574.537.0600 • Fax: 574.975.6274**

**www.Kodiak-RV.com**

Disclaimer: Product information is as accurate as possible as of the date of publication of this brochure. Features, floorplans and specifications are subject to change without notice. Please also consult our website for more current product information and specifications.

Tow Vehicle Disclaimer CAUTION: Owners of Dutchmen Manufacturing, Inc., recreational vehicles are solely responsible for the selection and proper use of tow vehicles. All customers should consult with a motor vehicle manufacturer or their dealer concerning the purchase and use of suitable tow vehicles for Dutchmen products. Dutchmen disclaims any liability or damages suffered as a result of the selection, operation, use or misuse of a tow vehicle. Dutchmen's limited warranty does not cover damage to the recreational vehicle or the tow vehicle as a result of the selection, operation, use or misuse of the tow vehicle.

**Your Local Dealer**