

# MELBOURNE

2012



MELBOURNE® | MOTORHOMES BY JAYCO®

AMERICA'S MOST LIVEABLE RVs.



MELBOURNE | MOTORHOMES



FORM MEETS  
FUNCTION



MELBOURNE 28F | NUTMEG



MELBOURNE 29D | WALNUT



MELBOURNE 28F | NUTMEG



MELBOURNE 28F | NUTMEG

## MAJOR MANEUVERING

Whether you're navigating crowded city streets or steep mountain passes, the 2012 Jayco Melbourne is designed to make driving a breeze. Featuring a Triton 305 HP engine and Ford E-450 chassis, Melbourne is raising the bar for Class C motorhomes everywhere, while its luxurious interior—complete with Washington Glazed Maple cabinetry, Optima leather comfort lounge and Cloud Ten pillowtop mattress—ensures you'll get there in style.



# NOBODY OFFERS A BETTER WARRANTY THAN WE DO

## YOU WANT YOUR RV TO LAST A LONG TIME.

That's why we offer our exclusive 2-year Co-Pilot Warranty, the best and most comprehensive warranty program in the industry. Every Jayco RV undergoes rigorous quality control testing before it leaves the factory, so you can be confident your new Jayco will continue to provide the ultimate in liveability and reliability for years to come.

For a copy of our 2-year limited warranty with full terms and conditions, ask your local Jayco dealer.

## ROADSIDE ASSISTANCE

Travel worry-free with Jayco's Customer First Roadside Assistance program, yours at no cost during your first year of ownership. This program is offered through National Motor Club, the largest RV emergency road service in the country, and gives you immediate access to dependable roadside assistance and support services with a simple phone call.



TO LEARN MORE ABOUT  
OUR QUALITY CONTROL  
TESTING, SCAN HERE WITH  
YOUR SMARTPHONE.



## TRUE VALUE OF OWNERSHIP



### MORE STANDARD FEATURES

We pack more standard features into our RVs than anyone else. Even better, they're features we know you'll want, designed to make your motorhome more home-like, comfortable and convenient. Because at Jayco, it's always been about liveability.



### BRAND-NAME COMPONENTS

We like living up to the name we've built for ourselves. That's why we only use dependable components in our RVs, made by companies that value their reputation as much as we do ours.



### LESS MAINTENANCE

Our top-quality materials and production techniques let you spend more time enjoying your new RV and less time maintaining it.



### BETTER AVERAGE RESALE VALUE

In the last three years, Jayco owners have been banking on their investments. According to the NADA, Jayco's average resale value was 4.81% higher than the competition, giving Jayco the top resale value in the RV industry.

With Jayco, you get more amenities, more liveable, home-like features and superior construction for less maintenance and greater resale value.

**Simply put, you won't find another RV packed with more TRUE VALUE.**



### SETTING THE BAR FOR PERFORMANCE

At Jayco, we believe in making our motorhomes well-oiled machines, so we don't skimp on standards that give you power. With **A** | a Triton 6.8L EFI V-10 305 HP engine with power anti-lock brakes and power steering and a Ford E-450 chassis with a five-speed TorqShift automatic transmission, Melbourne can effortlessly tow up to 5,000 pounds. And with **B** | a lap belt built in to every seating position and **C** | an Optima leather driver seat with 6-way power, you'll be set for the ride.

### HIGH-END FEATURES

Melbourne offers up top-notch names with its **A** | standard, fuel-efficient Onan 4,000-watt generator (usually optional on other motorhomes), **B** | Clarion infotainment system with in-dash, touch-screen radio with 6.5" LCD color display and **C** | Apollo convection microwave with 3-burner cooktop.



### MORE CONVENIENT, LESS MAINTENANCE

We want you to be able to enjoy your trip. And to do that, we've taken the maintenance out of camping. With **A** | easily accessible large exterior storage and **B** | electric-powered, swing-away, remote and heated side-view mirrors, we've taken the work out of packing up and backing up—so you can focus on the fun part of camping.



### LONG-LASTING QUALITY CONSTRUCTION

Known for quality construction, Jayco is built to hold its value years from now. Thanks to features, like **A** | painted, gel-coated exterior, more resistant to UV damage, and **B** | new fiberglass front and rear caps, built with economy and durability in mind, you can be confident Melbourne will hold up to years of adventure.

# JAYCO CONSTRUCTION

At Jayco, we've built a reputation for superior construction and craftsmanship. We always use top-quality materials and innovative manufacturing techniques—down to the smallest details. The result? Unmatched resale value and peace of mind in an RV that's built to handle whatever the road throws at it, while outlasting everything but your memories.



## OLD WORLD CRAFTSMANSHIP

Jayco's dedicated production team includes Amish craftsmen who build with well-honed woodworking techniques passed down for generations.



## BALL BEARING GUIDES

Our residential-style ball bearing drawer guides provide smooth operation and full-drawer extension for a stronger, more substantial drawer and a true home-like feel.



All Jayco products are green certified. Melbourne received a gold rating through use of sustainable materials, environmentally friendly production methods and reduction of waste.



## WALL CONSTRUCTION

- 1 Vacuum-bonded layers:** Involves 15-18 minutes of 144 tons of pressure to ensure a stronger bond
- 2 High-gloss, gel-coated fiberglass exterior and optional Diamond Shield paint protection:** Withstands use, travel and UV damage while creating a stunning package
- 3 Curved sidewalls and seamless front cap:** Increases aerodynamics, while the cap adds durability and leak protection where it's needed most

## FLOOR CONSTRUCTION

- 4 Vacuum-bonded layers:** Backed by computer monitoring and constant quality control checks, Jayco prides itself on building a solid foundation
- 5 Welded aluminum frame:** Lighter than wood, increases Melbourne's maneuverability
- 6 Structurwood floors:** Creates one of the industry's strongest foundations

## ROOF CONSTRUCTION

- 7 Vacuum-bonded layers:** Laminates materials together using more pressure than typical pinch-roll process
- 8 Seamless fiberglass shield:** Features one-piece construction, ensuring better leak protection
- 9 1/4" plywood decking on 5" arched welded aluminum trusses:** More moisture resistant, plywood holds up to the elements
- 10 Bead-foam insulation (R-23):** Maintains interior temperatures

## PERFORMANCE

- 11 Rubber body mounts with Hellwig helper springs:** Reduces vibration
- 12 MOR/ryde frame:** Extends chassis for optimal weight distribution and features durable design with one-piece assembly, laser-shear, tight-fit construction and consistent, robotically-welded structure
- 13 Ford E-450 chassis and Triton 6.8L V-10 305 HP engine:** Features a 19,500 lbs. GCWR with up to 5,000 lbs. of towing capacity

## STANDARDS AND OPTIONS

## STANDARD INTERIOR EQUIPMENT

- 6 cu. ft. refrigerator
- 6-panel residential-style passage door
- 12V electrical system with 110V, 60-amp power converter
- 22" digital LCD HDTV in bedroom
- ABS shower with one-piece surround
- Auto-ignition furnace with wall thermostat
- Ball bearing drawer guides, 75-lb. capacity with full-drawer extension
- Cable TV hookup with RG-6 coax
- Cabinetry crafted with screwed-stile construction
- Crank-up digital antenna for TV with signal booster
- Dream Dinette mechanism, raises and lowers dinette tabletop
- Entertainment center in front, includes 32" digital LCD HDTV
- Interior Command Center
- Porcelain stool with foot flush
- Prep for satellite dish for roof and sidewalls
- J-Stone solid-surface, high-gloss countertop with integrated deep bowls
- Lap safety belts on all seats in living area
- Leather touch comfort lounge with cup holders in arms
- Queen bed with Cloud Ten pillowtop mattress and quilted bedspread
- Raised-panel cabinet doors
- Single-lever faucet with pull-out sprayer
- Sink/cutting board covers (2)
- Trackless carpeting with padding throughout unit
- Under-counter Apollo convection microwave with 3-burner cooktop
- Washington Glazed Maple cabinetry
- Water purification system

## STANDARD EXTERIOR EQUIPMENT

- 6-gal. gas/electric DSI auto-ignition water heater with bypass system
- 30-amp power cord
- 120V G.F.C.I. protected exterior receptacle

Automotive taillights and third brake light

Black holding tank sprayer

Dual sliding battery tray

Electric-powered, double-entrance step

Entry door gas strut

Fiberglass running boards with wheel flares

Full front and rear molded gel-coated fiberglass caps

Heated holding tanks, 12V pads

High-gloss, gel-coated sidewalls

High-output, marine-grade exterior speakers (2)

Lockable exterior storage compartments with door pulls

Painted skirting

Slideout topper awnings

Tinted safety-glass windows

TuffShell vacuum-bonded 5" crowned laminated roof

TuffShell vacuum-bonded floor/sidewalls

Onan 4000-watt MicroQuiet generator with auto-changeover

One-piece fiberglass roof

Outside shower

Unitized, 1-1/2" laminated construction of floor

Welded aluminum sidewall framework

Wheel liners

## STANDARD CAB EQUIPMENT

- 3-point lap and shoulder safety belts (driver and passenger)
- Auxiliary start switch
- Battery disconnect
- Deadbolt lock on entrance door
- Driver and passenger air bags
- Optima leather driver seat with 6-way power
- Optima leather passenger seat
- Padded fabric headliner
- Privacy drape for lower cab
- Remote keyless entry

## STANDARD CHASSIS EQUIPMENT

- 5-speed automatic TorqShift series transmission with overdrive
- 55-gal. fuel tank
- 56-lb. chassis-mounted propane tank
- 78" ceiling height
- 120-amp alternator
- 5,000-lb. rated hitch with 7-way plug
- A/C and cruise control
- Ford E-450 chassis
- Hellwig helper springs
- Power window and door locks
- Tilt steering wheel
- Triton 6.8L EFI V-10 305 HP engine

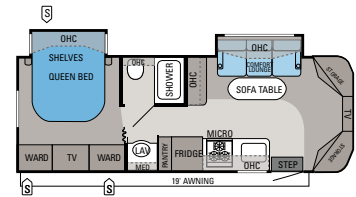
## OPTIONS

- 400-watt inverter
- 15,000-BTU A/C with heat pump
- Aluminum rims
- Customer Value Package
- Diamond Shield paint protection film
- Driver/passenger side view cameras
- Electric leather comfort lounge (n/a 28F)
- Hydraulic auto-leveling jacks
- In-motion satellite dish
- Premium Paint Package: Cinnamon
- Premium Paint Package: Sandrift
- Navigation system
- On-demand tankless water heater
- Satellite kit (includes tripod, dish and A/V cables)
- Sirius satellite radio system

## CUSTOMER VALUE PACKAGE

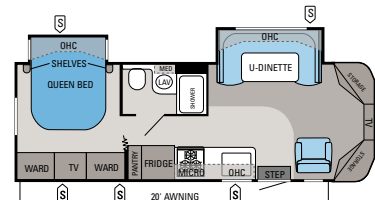
- Attic fan in living area
- Bathroom power vent
- Clarion infotainment system with in-dash, touch-screen radio with 6.5" LCD color display, DVD/USB, Sirius satellite prep and Bluetooth
- Deluxe, remote-control, heated, side-view mirrors
- Glass shower door
- Portable, outside gas grill
- Wood-grain dash kit

## FLOORPLANS



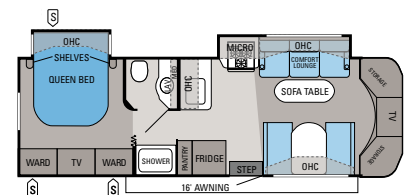
## MELBOURNE | 26A

Ext. Length: 28' 9" Ext. Height: 126" Sleeps: 3-4



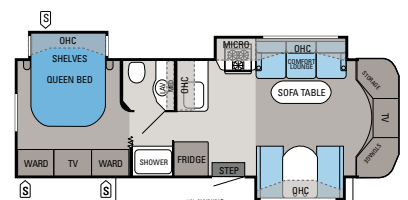
## MELBOURNE | 28F

Ext. Length: 29' 10" Ext. Height: 126" Sleeps: 3-4



## MELBOURNE | 29C

Ext. Length: 31' 7" Ext. Height: 126" Sleeps: 4-5



## MELBOURNE | 29D

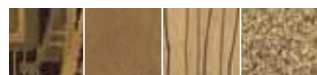
Ext. Length: 31' 5" Ext. Height: 126" Sleeps: 4-5

## INTERIOR DÉCOR CHOICES

## CRIMSON



## WALNUT



## NUTMEG



## WOOD



## EXTERIOR PAINT OPTIONS



STANDARD PAINT



SANDRIFT PREMIUM PAINT (OPTIONAL)



CINNAMON PREMIUM PAINT (OPTIONAL)



FOR A COMPLETE LIST OF STANDARDS AND OPTIONS, SCAN HERE WITH YOUR SMARTPHONE OR VISIT JAYCO.COM.

## SPECIFICATIONS

FLOORPLAN	EXT. LENGTH	EXT. WIDTH	EXT. HEIGHT (WITH A/C)	INT. HEIGHT	GROSS VEHICLE WEIGHT RATING (LBS.)	GROSS COMBINED WEIGHT RATING (LBS.)	ENGINE/SIZE	WHEEL BASE	FURNACE AUTO-IGNITION (BTUS)	FRESH WATER CAPACITY (INCLUDES WATER HEATER) (GALS.)	GRAY WASTE WATER CAPACITY (GALS.)	BLACK WASTE WATER CAPACITY (GALS.)
26A	28' 9"	96"	126"	78"	14,500	19,500	TRITON EFI V10	181"	31M	39	34	32
28F	29' 10"	96"	126"	78"	14,500	19,500	TRITON EFI V10	191"	31M	39	34	32
29C	31' 7"	96"	126"	78"	14,500	19,500	TRITON EFI V10	212"	31M	37	34	32
29D	31' 5"	96"	126"	78"	14,500	19,500	TRITON EFI V10	212"	31M	37	34	32

# A TRADITION OF LIVEABILITY

**THE JAYCO STORY BEGAN IN 1968** when Jayco founder Lloyd Bontrager created an innovative, easy-to-use lifter system that led to a better fold-down camper. Loaded with more comforts and conveniences, Lloyd believed his camper would bring people closer together because it was more liveable. A devoted family man, Lloyd's passion extended to his business as well. In fact, our company's success stems from his insistence on treating everyone at Jayco as family — from our factory to our front office, our salespeople to our suppliers, and our customers to our community.

**BLENDING OLD WORLD AMISH CRAFTSMANSHIP WITH INNOVATIVE TECHNOLOGY**, Jayco is the nation's largest family-owned and operated RV manufacturer today. And while our product line has grown considerably over the years, every unit we build is still guided by Lloyd's vision and a humble desire to help make it easier for families to explore together and relax together. It's what separates us from other RV manufacturers. And it's what continues to make Jayco America's Most Liveable RVs.



AMERICA'S MOST **LIVEABLE** RVs.



Jayco proudly sponsors Tread Lightly!, a nonprofit organization whose mission is to empower generations to enjoy the outdoors responsibly through education and restoration.



From RV insurance to extended warranties, JayPlus has it covered. Ask your Jayco dealer about our exclusive JayPlus program today.



As a Jayco owner, you can be part of the Jayco Jafari International Travel Club. Ask your dealer about the Jafari "flight" in your area, write Jayco or visit our website.

**Gross Vehicle Weight Rating (GVWR):** The maximum permissible weight of the motorhome, including the Unloaded Vehicle Weight (UUV) plus passengers, personal items, all cargo, fluids, options and dealer-installed accessories. The GVWR is equal to or greater than the sum of the UUV and the Cargo Carrying Capacity.

**Gross Combined Weight Rating (GCWR):** The maximum allowable combined weight of the motorhome used as a tow vehicle and the attached towed vehicle. It is important for your safety and enjoyment that you are aware of the weights and tow ratings of the RV you select. Consult a competent advisor for questions or advice. Whether you are new to RVing or a veteran, get a feel for the performance

of your RV before heading out on the roadways. When you tow a vehicle with your RV, you must drive differently than when you drive a single vehicle. Practice hooking up, driving, backing up and braking in a safe environment or seek out professional instruction. Jayco affixes a weight label to each RV which lists weight information for that vehicle. Refer to that label to verify the vehicle will meet your requirements. See specifications chart inside.

**Jayco, Inc., P.O. Box 460, Middlebury, IN 46540, [www.jayco.com](http://www.jayco.com)** 

See dealer for further information and prices. All information in this brochure is the latest available at the time of publication approval. Jayco reserves the right to make changes and to discontinue models without notice or obligation. Photos in this brochure may show optional equipment and props for photography purposes. RVs built for sale in Canada may differ to conform to Canadian codes. ©2011 Jayco, Inc. 12-MEL-PL 0811-75K Printed in U.S.A.