

AMERICA'S JAY FLIGHT FAVORITE

2012



JAY FLIGHT® | TRAVEL AND PARK TRAILERS BY JAYCO®



AMERICA'S MOST LIVEABLE RVs.



JAY FLIGHT 29QBH | SIENNA



AMERICA'S MOST LIVEABLE RVs

Liveability means making your camping experience more comfortable, in an RV you can depend on, at a price you'll feel good about. It's spending quality time together, without spending a fortune. And it's what makes Jayco America's Most Liveable RVs.





#1 SELLING TRAVEL TRAILER SIX YEARS STRAIGHT

With spacious slideouts, well-planned living areas, comfortable furniture and residential-style kitchens and baths, the 2012 Jayco Jay Flight is our most family-friendly travel trailer yet. In fact, many of the high-end features that come standard are only available as expensive upgrades in other RVs, making Jay Flight friendly on your wallet, too. And that's one more reason why Jay Flight continues to be the top-selling travel trailer in the country.

JAY FLIGHT TRAVEL TRAILER

With its advanced WaterWorks system, Jay Flight features 85-plus gallons of fresh water capacity—more than most other travel trailers—so the whole family can wash up, making it the perfect fit.

SLEEPING CAPACITY | **UP TO 12**

EXTERIOR LENGTH | **23' 1"– 37' 11"**

UNLOADED WEIGHT | **4,140–8,190**

FLOORPLANS | **15**

JAY FLIGHT BUNGALOW PARK TRAILER

With a residential-style atrium front profile, 8-foot ceilings, 60" patio door, free-standing 4-burner gas range with oven and 18 cu. ft. refrigerator with ice maker, you'll forget you're in an RV—which should be the point when you park your park trailer.

SLEEPING CAPACITY | **UP TO 10**

EXTERIOR LENGTH | **40' 11"**

UNLOADED WEIGHT | **10,570–10,905**

FLOORPLANS | **3**



JAY FLIGHT | TRAVEL TRAILERS AND PARK TRAILERS

AMERICA'S
FAVORITE



JAY FLIGHT | TRAVEL TRAILERS



FAMILY FLOORPLANS

Jay Flight is a perfect fit for families. With 15 different floorplans, there's an array of choices to suit your lifestyle. From bunk rooms for the kids, a queen-sized bed for you and a new extendable Flex Dinette for the whole family, Jay Flight is designed with everyone in mind.



JAY FLIGHT 26RLS | DRIFTWOOD



JAY FLIGHT 26RLS | DRIFTWOOD



JAY FLIGHT 26RLS | DRIFTWOOD



JAY FLIGHT 29QBH | SIENNA

READY TO TOW

Built for families on the go, Jay Flight is packed with more standard towing features, like E-Z Lube axles for easy maintenance and an aerodynamic curved front profile for better gas economy.

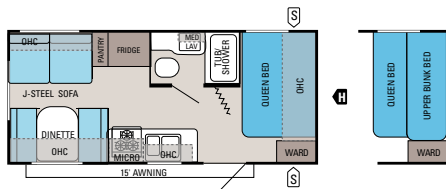
CONVENIENT

With a 3-burner gas range, microwave oven with carousel and residential-style sink, you can whip up a meal for the whole family. And with raised-panel, solid hardwood cabinetry and decorative kitchen backsplash, you can cook in stunning style.

CLEAN UP

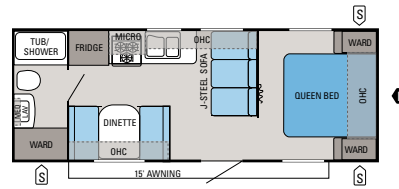
Boasting a porcelain foot-flush toilet, tub/shower combo, bathroom exhaust fan and a medicine cabinet with mirror, Jay Flight's bathroom comes with everything you need at a price you can afford.

FLOORPLANS



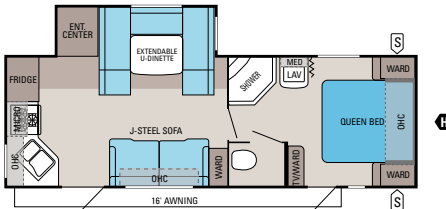
JAY FLIGHT | 19RD

Ext. Length: 23' 1" Ext. Height: 128" Unloaded Wt. (lbs.): 4,140 Sleeps: 4-7



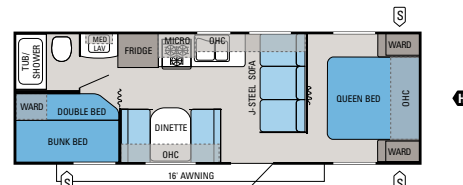
JAY FLIGHT | 22FB

Ext. Length: 26' 5" Ext. Height: 127" Unloaded Wt. (lbs.): 4,370 Sleeps: 4-6



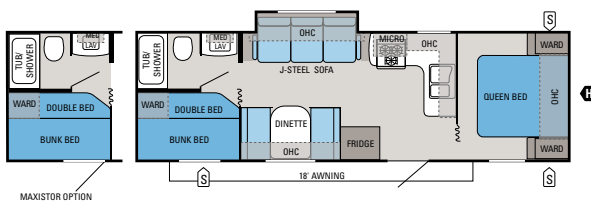
JAY FLIGHT | 25RKS

Ext. Length: TBD Ext. Height: TBD Unloaded Wt. (lbs.): TBD Sleeps: 4-6



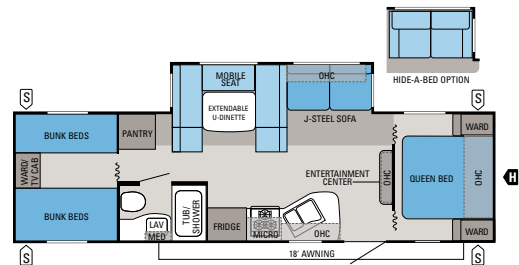
JAY FLIGHT | 26BH

Ext. Length: 29' 1" Ext. Height: 127" Unloaded Wt. (lbs.): 4,860 Sleeps: 7-9



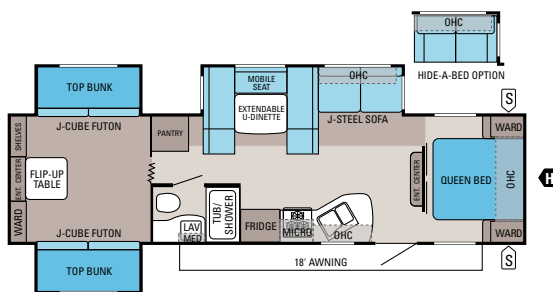
JAY FLIGHT | 28BHS

Ext. Length: 30' 6" Ext. Height: 127" Unloaded Wt. (lbs.): 5,215 Sleeps: 7-9



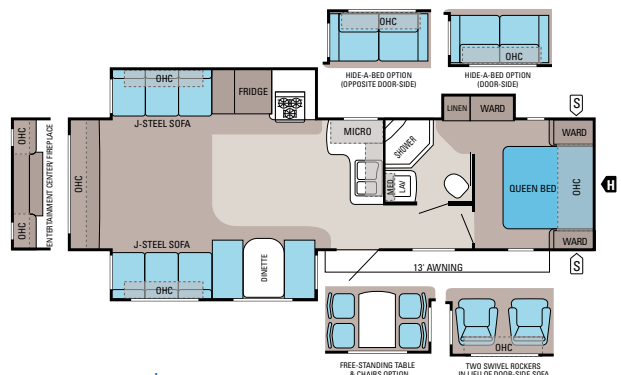
JAY FLIGHT | 29QBH

Ext. Length: 33' 2" Ext. Height: 133" Unloaded Wt. (lbs.): 6,745 Sleeps: 9-10



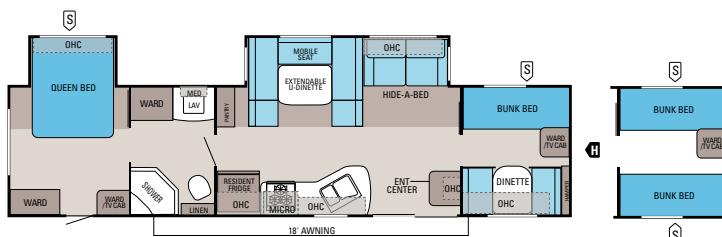
JAY FLIGHT | 32TSBH

Ext. Length: 35' 6" Ext. Height: 134" Unloaded Wt. (lbs.): 8,075 Sleeps: 11-12



JAY FLIGHT | 33RLDS

Ext. Length: 35' 5" Ext. Height: 134" Unloaded Wt. (lbs.): 7,995 Sleeps: 3-8

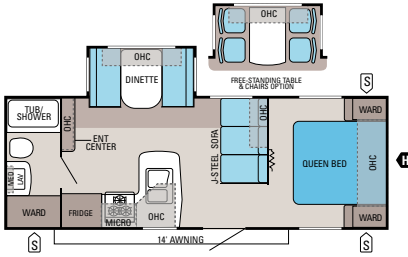


JAY FLIGHT | 36BHDS

Ext. Length: 37' 11" Ext. Height: 134" Unloaded Wt. (lbs.): 8,190 Sleeps: 8-10

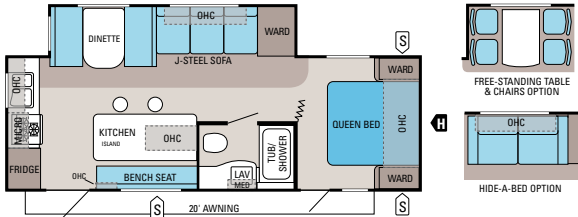
- | | | | |
|-----|-----------------|--------|-------------------|
| | OUTSIDE STORAGE | MICRO | MICROWAVE |
| | TRAILER HITCH | OHC | OVERHEAD CABINETS |
| LAV | BATHROOM SINK | FRIDGE | REFRIGERATOR |
| | | WARD | WARDROBE |

QUAD FRONT BUNK OPTION



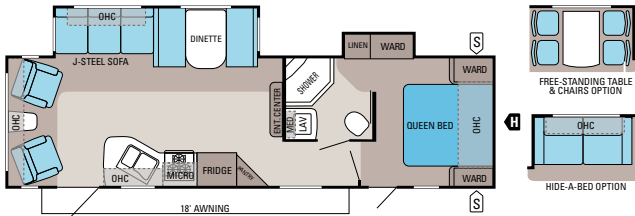
JAY FLIGHT | 24FBS

Ext. Length: 26' 11" Ext. Height: 134" Unloaded Wt. (lbs.): 5,195 Sleeps: 3-6



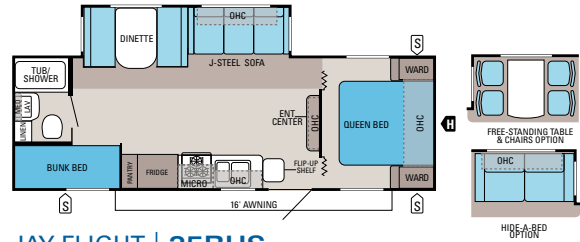
JAY FLIGHT | 26RKS

Ext. Length: 28' 5" Ext. Height: 134" Unloaded Wt. (lbs.): 6,200 Sleeps: 3-6



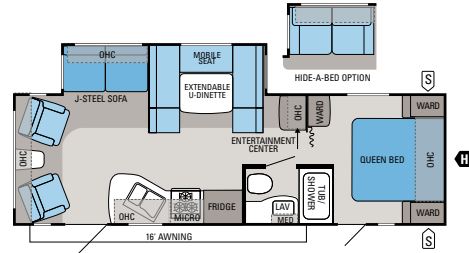
JAY FLIGHT | 29RLDS

Ext. Length: 33' 4" Ext. Height: 134" Unloaded Wt. (lbs.): 7,175 Sleeps: 3-6



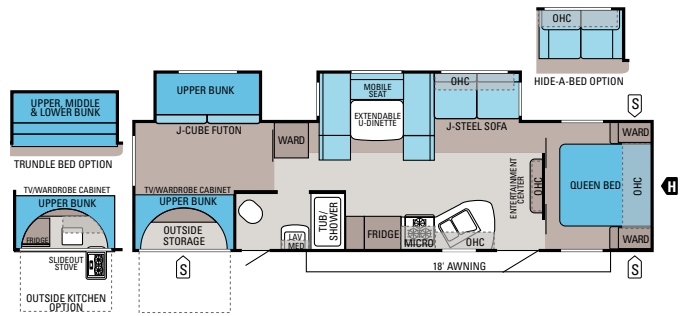
JAY FLIGHT | 25BHS

Ext. Length: 28' 11" Ext. Height: 134" Unloaded Wt. (lbs.): 6,015 Sleeps: 6-8



JAY FLIGHT | 26RLS

Ext. Length: 30' Ext. Height: 134" Unloaded Wt. (lbs.): 6,310 Sleeps: 4-6



JAY FLIGHT | 32BHDS

Ext. Length: 35' 6" Ext. Height: 128" Unloaded Wt. (lbs.): 7,675 Sleeps: 8-10

SPECIFICATIONS

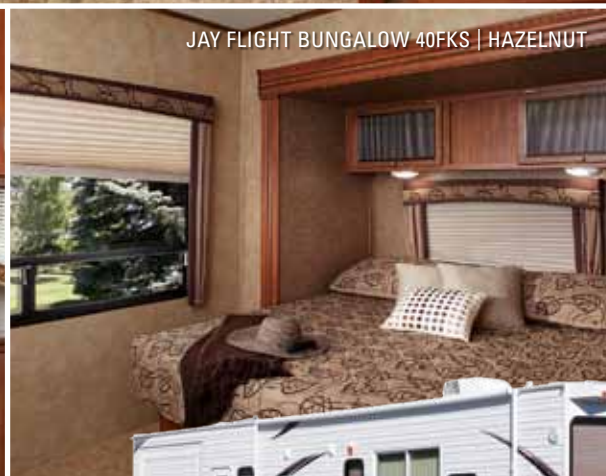
FLOORPLAN	EXTERIOR LENGTH	EXTERIOR WIDTH	EXTERIOR HEIGHT (WITH A/C)	INTERIOR HEIGHT	UNLOADED VEHICLE WEIGHT (LBS.)	DRY HITCH WEIGHT (LBS.)	GROSS VEHICLE WEIGHT RATING (LBS.)	CARGO CARRYING CAPACITY (LBS.)	FRESH WATER CAPACITY (GAL.) (WITH WATER HEATER)	GRAY WASTEWATER CAPACITY (GAL.)	TOILET/BLACK WASTEWATER CAPACITY (GAL.)
19RD	23' 1"	96"	128"	81"	4,140	530	6,200	2,060	90	32.5	32.5
22FB	26' 5"	96"	127"	81"	4,370	570	6,500	2,130	90	32.5	32.5
24FBS	26' 11"	96"	134"	81"	5,195	630	7,500	2,305	86	32.5	32.5
25BHS	28' 11"	96"	134"	81"	6,015	775	8,180	2,165	86	32.5	32.5
25RKS	TBD	96"	TBD	81"	TBD	TBD	TBD	TBD	86	65	32.5
26BH	29' 1"	96"	127"	81"	4,860	580	7,500	2,640	90	32.5	32.5
26RKS	28' 5"	96"	134"	81"	6,200	765	8,400	2,200	86	65	32.5
26RLS	30'	96"	134"	81"	6,310	780	8,500	2,190	86	32.5	32.5
28BHS	30' 6"	96"	127"	81"	5,215	685	7,500	2,285	90	32.5	32.5
29QBH	33' 2"	96"	133"	81"	6,745	880	9,250	2,505	86	32.5	32.5
29RLDS	33' 4"	96"	134"	81"	7,175	955	9,500	2,325	86	65	32.5
32BHDS	35' 6"	96"	128"	81"	7,675	1,055	10,200	2,525	86	32.5	32.5
32TSH	35' 6"	96"	134"	81"	8,075	940	10,500	2,425	86	32.5	32.5
33RLDS	35' 5"	96"	134"	81"	7,995	1,060	10,300	2,305	86	32.5	32.5
36BHDS	37' 11"	96"	134"	81"	8,190	990	10,500	2,310	90	32.5	32.5



JAY FLIGHT BUNGALOW 40FKS | HAZELNUT



JAY FLIGHT BUNGALOW 40FKS | HAZELNUT



JAY FLIGHT BUNGALOW 40FKS | HAZELNUT



BUNGALOW 40FKS | HAZELNUT

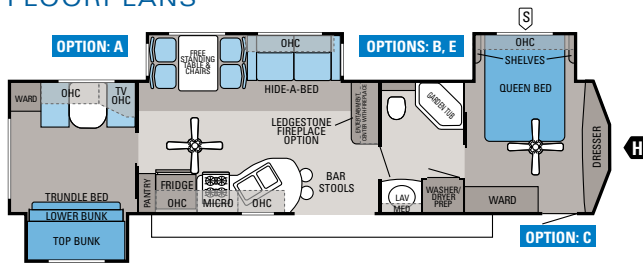


JAY FLIGHT BUNGALOW | PARK TRAILERS

STAY AWHILE

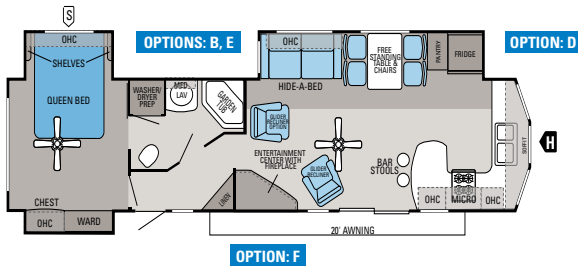
Jay Flight Bungalow features an open 40-foot floorplan with comfortable living spaces, ample storage options and high-end finishing touches. It's more spacious than a traditional travel trailer and less expensive than building on-site, making it ideal for long-term stays at your favorite vacation spot.

FLOORPLANS



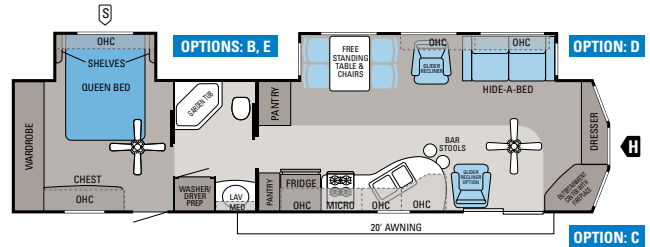
JAY FLIGHT BUNGALOW | 40BHS

Ext. Length: 40' 11" Ext. Height: 152" Unloaded Weight (lbs.): 10,905 Sleeps: 8-10



JAY FLIGHT BUNGALOW | 40FKS

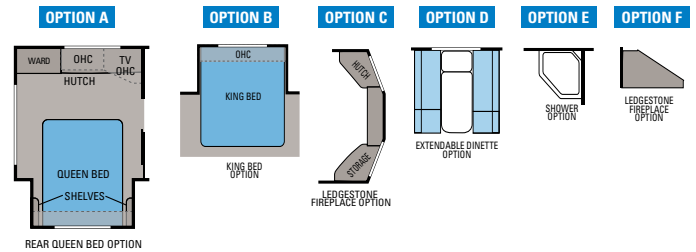
Ext. Length: 40' 11" Ext. Height: 152" Unloaded Weight (lbs.): 10,815 Sleeps: 4-6



JAY FLIGHT BUNGALOW | 40FER

Ext. Length: 40' 11" Ext. Height: 152" Unloaded Weight (lbs.): 10,570 Sleeps: 4-6

OPTIONS



SPECIFICATIONS

FLOORPLAN	EXTERIOR LENGTH	EXTERIOR WIDTH	EXTERIOR HEIGHT (WITH A/C)	INTERIOR HEIGHT	UNLOADED VEHICLE WEIGHT (LBS.)	DRY HITCH WEIGHT (LBS.)	GROSS VEHICLE WEIGHT RATING (LBS.)	CARGO CARRYING CAPACITY (LBS.)	FRESH WATER CAPACITY (GAL.) (WITH WATER HEATER)	GRAY WASTEWATER CAPACITY (GAL.)	TOILET/BLACK WASTEWATER CAPACITY (GAL.)
40BHS	40' 11"	102"	152"	96"	10,905	1,615	12,500	1,595	50	65	32.5
40FER	40' 11"	102"	152"	96"	10,570	1,620	12,500	1,930	50	65	32.5
40FKS	40' 11"	102"	152"	96"	10,815	1,625	12,500	1,685	50	65	32.5

STANDARDS AND OPTIONS

STANDARD INTERIOR EQUIPMENT

- 18 cu. ft. residential-style 120V refrigerator with ice maker (Bungalow)
- 20" free-standing 4-burner gas range with oven (Bungalow)
- 96" interior height (Bungalow)
- Ball bearing drawer guides, 50-lb. capacity with full-drawer extension
- Decorative kitchen backsplash
- Diamondflor vinyl flooring
- Glazed Concord Cherry stained-hardwood, raised-panel kitchen cabinet doors
- Large MaxView tinted safety-glass windows
- Oversized 60/40 style kitchen sink with high-rise faucet
- Pocket screwed cabinetry
- Porcelain stool with foot flush
- Pleated shades throughout
- Residential furniture, cushions and window treatments designed and made by Jayco

STANDARD EXTERIOR EQUIPMENT

- 5/8" tongue-and-groove plywood flooring
- 30" x 72" entrance door with step light
- 60" patio door (Bungalow)
- 102" wide-body construction (Bungalow)
- Aerodynamic, rounded front profile (n/a Bungalow)
- Big Easy entrance step with 10" deep treads (select models)
- Detachable hitch (Bungalow)
- Electric powered slideouts
- Fiberglass, atrium-style front cap with recessed lights (Bungalow)
- I-Class cambered structural I-beam frame

- Integrated A-frame
- Fully decked plywood, walkable crowned roof
- WaterWorks System, including 75-plus gallons of fresh water (n/a Bungalow)

OPTIONS

- 2nd A/C in bedroom (Bungalow)
- 2nd glider recliner (40FER, 40FKS)
- 20-gal. electric water heater (Bungalow)
- Aluminum rims
- Bike rack/cargo tray
- Carefree adjustable pitch electric patio awning
- Customer Value Package
- Customer Value Package with 15,000-BTU A/C (n/a Bungalow)
- Door-side hide-a-bed sofa (select models)
- Elite Package (n/a Bungalow)
- Extendable dinette (select models)
- Free-standing dinette table and 4 chairs (select models)
- Hide-a-bed sofa (select models)
- King-sized bed (Bungalow)
- LedgeStone fireplace, including LedgeStone facade with 32" LCD HDTV (Jay Flight) or 40" LCD HDTV (Bungalow)
- Linoleum in living area (select models)
- Maxistor door (28BHS)
- No patio awning (Bungalow)
- Outside kitchen
- Outside grill
- Power stabilizer jacks (4)
- Rear queen bed in lieu of bunks (40BHS)
- Roof ladder
- Satellite kit
- Shower in lieu of garden tub (Bungalow)

- Spare tire (Bungalow)
- Technology Package (n/a Bungalow)
- Thermal Package (Bungalow)
- Thermal pane tinted safety-glass windows (Bungalow)
- Trundle bed in lieu of futon (32BHDS)

CUSTOMER VALUE PACKAGE

- 13,500 or 15,000-BTU A/C with wall thermostat and louvered-directional ceiling vents
- ABS tub surround
- Bathroom power vent
- Double 30-lb. propane bottles/regulator
- Microwave oven with carousel
- Quilted bedspread
- Shirt wardrobe in bedroom
- Sink cover/cutting board
- Spare tire and carrier
- Tub/shower skylight
- Water heater bypass system

ELITE PACKAGE (JAY FLIGHT)

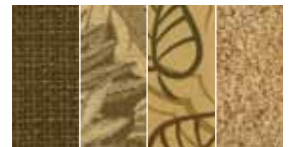
- 8 cu. ft. refrigerator
- Aluminum rims
- Hardwood refrigerator insert
- Pillowtop mattress
- Power tongue jack

TECHNOLOGY PACKAGE (JAY FLIGHT)

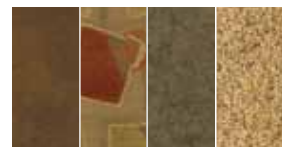
- 26" LCD HDTV
- Multi-Media Premium Sound System
- AM/FM/CD/DVD stereo with MP3 input jack

INTERIOR DÉCORS

HAZELNUT



SIENNA



DRIFTWOOD



WOOD



FOR A COMPLETE LIST OF STANDARDS AND OPTIONS, SCAN HERE WITH YOUR SMARTPHONE OR VISIT JAYCO.COM.

JAYCO CONSTRUCTION

At Jayco, we've built a reputation for superior construction and craftsmanship. We always use top-quality materials and innovative manufacturing techniques—down to the smallest details. The result? Unmatched resale value and peace of mind in an RV that's built to handle whatever the road throws at it, while outlasting everything but your memories.



OLD WORLD CRAFTSMANSHIP

Jayco's dedicated production team includes Amish craftsmen who build with well-honed woodworking techniques passed down for generations.



BUILT TO LAST

Jay Flight is built to hold its value years from now thanks to durable details like pre-drilled and screwed cabinet construction.



All Jayco products are green certified. Jay Flight received a gold rating through use of sustainable materials, environmentally friendly production methods and reduction of waste.



WALL CONSTRUCTION

- 1** 2" x 2" wooden studs: Creates Jay Flight's long-lasting framework
- 2** Hand-tucked and glued fiberglass insulation (R-7): Prevents insulation from sagging over time (vs. blanket-insulation technique), while helping increase insulation value near studs
- 3** Extra-wide corner seals: Prevents leaks on the corner molds, baggage and entrance doors and window seals

FLOOR CONSTRUCTION

- 4** 5/8" tongue-and-groove plywood deck on 2" x 3" wooden floor joists: Moisture resistant, plywood holds up to the elements
- 5** Fiberglass insulation (R-7): Maintains interior temperatures
- 6** Full-width outriggers: Supports wall weight with 4-foot spacing (vs. 8-foot spacing) and wall-to-wall, full-width design

ROOF CONSTRUCTION

- 7** 3/8" plywood decking on 4 1/2" arched wood trusses: Moisture resistant, plywood holds up to rain
- 8** Fiberglass insulation (R-7): With optional thermal package, increases R-value to 22
- 9** Seamless rubber roof: Features one-piece construction, ensuring better leak protection

OTHER FEATURES

- 10** Galvanized steel wheel wells: Reduces heat loss through floor; prevents floor damage in case of a blown tire
- 11** WaterWorks system: Boasts 85-plus gallons of fresh water (n/a Bungalow)
- 12** Innovative, aerodynamic front profile: Eliminates angled profile, increasing towability (n/a Bungalow)



TRUE VALUE OF OWNERSHIP

With Jayco, you get more amenities, more liveable, home-like features and superior construction for less maintenance and greater resale value. **Simply put, you won't find another RV packed with more TRUE VALUE.**

↑ MORE STANDARD FEATURES

We pack more standard features into our RVs than anyone else. Even better, they're features we know you'll want, designed to make your RV more liveable.



MAKING THE MOST OF SPACE

Say hello to the innovative, standard Flex Dinette. Featuring **A** | extra pull-out seating, **B** | a convertible ottoman and **C** | storage space, this **D** | U-dinette is just one of many features that makes Jay Flight extremely liveable.

↑ LESS MAINTENANCE

Our top-quality materials and production techniques let you spend more time enjoying your new RV and less time maintaining it.



PUTTING THE FOCUS ON CAMPING

At Jayco, we want your RV to be easy to use. That's where the Jay Flight's **A** | optional electric stabilizer jacks and **B** | optional electric awning come in. And with our awning's push-button adjustable pitch, it's easier than ever to adjust it for desired shade and water runoff. Meanwhile, our **C** | heavy-duty, full-extension ball bearing drawer guides and **D** | pleated night shades are easy to use and built to hold up to constant use.



NOBODY OFFERS A BETTER WARRANTY THAN WE DO

Our exclusive 2-year Co-Pilot Warranty is the best and most comprehensive warranty program in the industry. Every Jayco RV undergoes rigorous quality control testing before it leaves the factory, so you can be confident your new Jayco will continue to provide the ultimate in liveability and reliability for years to come.

For a copy of our 2-year limited warranty with full terms and conditions, ask your local Jayco dealer.

www.jayco.com

A TRADITION OF LIVEABILITY

THE JAYCO STORY BEGAN IN 1968 when Jayco founder Lloyd Bontrager created an innovative, easy-to-use lifter system that led to a better fold-down camper. Loaded with more comforts and conveniences, Lloyd believed his camper would bring people closer together because it was more liveable. A devoted family man, Lloyd's passion extended to his business as well. In fact, our company's success stems from his insistence on treating everyone at Jayco as family — from our factory to our front office, our salespeople to our suppliers, and our customers to our community.

BLENDING OLD WORLD AMISH CRAFTSMANSHIP WITH INNOVATIVE TECHNOLOGY, Jayco is the nation's largest family-owned and operated RV manufacturer today. And while our product line has grown considerably over the years, every unit we build is still guided by Lloyd's vision and a humble desire to help make it easier for families to explore together and relax together. It's what separates us from other RV manufacturers. And it's what continues to make Jayco America's Most Liveable RVs.



AMERICA'S MOST **LIVEABLE** RVs.



Jayco proudly sponsors Tread Lightly!, a nonprofit organization whose mission is to empower generations to enjoy the outdoors responsibly through education and restoration.

Unloaded Vehicle Weight (UVW): Sometimes referred to as "Dry Weight," UVW means the typical weight of this trailer as built at the factory. The UVW, as used in product literature and other promotional materials, does not include cargo, fresh water, propane, options or dealer-installed accessories.

Gross Vehicle Weight Rating (GVWR): GVWR means the maximum permissible weight of the trailer, including the UVW plus passengers, personal items, all cargo, fluids, options, and dealer-installed accessories. The GVWR is equal to or greater than the sum of the UVW and the CCC.



From RV insurance to extended warranties, JayPlus has it covered. Ask your Jayco dealer about our exclusive JayPlus program today.

Cargo Carrying Capacity (CCC): CCC means the maximum weight of all passengers, personal items, food, fresh water, propane, tools, other cargo and dealer-installed accessories that can be carried by the trailer. CCC is equal to or less than GVWR minus UVW. The addition of options will decrease the CCC.

Hitch Weight (HW): The hitch weight, as used in product literature and other promotional materials, does not include cargo, fresh water, propane gas, options or dealer-installed accessories. The addition of these types of items will either add to or subtract from the stated hitch weight.



As a Jayco owner, you can be part of the Jayco Jafari International Travel Club. Ask your dealer about the Jafari "flight" in your area, write Jayco or visit our website.

It is important for your safety and enjoyment that your tow vehicle be adequately sized and equipped to tow and handle the GVWR of the RV you select. Review weights and rating of your tow vehicle and consult a competent advisor for questions or advice. Whether you are new to RVing or a veteran, get a feel for the performance of your tow vehicle before heading out on the roadways. When you tow an RV, you must drive differently than when you drive a single vehicle. Practice hooking up, driving, backing up and braking in a safe environment or seek out professional instruction. Jayco affixes a weight label to each RV which lists weight information for that vehicle. See specifications chart inside.

Jayco, Inc., P.O. Box 460, Middlebury, IN 46540, www.jayco.com

See dealer for further information and prices. All information in this brochure is the latest available at the time of publication approval. Jayco reserves the right to make changes and to discontinue models without notice or obligation. Photos in this brochure may show optional equipment and props for photography purposes. RVs built for sale in Canada may differ to conform to Canadian codes. ©2011 Jayco, Inc. 12-JFLT-PL 0711-100K Printed in U.S.A.