

REYO

2012





ON THE COVER: 25T Tarnished Silver Full-Body Paint



25Q Smoke Screen with Mocha Cherry



25Q Smoke Screen with Mocha Cherry

INNOVATION CONTINUES

Just a few years ago, Itasca® introduced the Reyó,[™] redefining what a class A coach can achieve. Built on the Mercedes-Benz® Sprinter chassis and powered by a Mercedes-Benz turbo-diesel engine, the Reyó offers unprecedented automotive performance and fuel efficiency in a modern, luxurious package, and presents three diverse models to choose from.

Our quest for continuous improvement is obvious in the innovations for 2012. The retractable screen door is a brand new addition to the Reyó, as is LED lighting which will cut your energy consumption up to 70%—extending vital battery life while dry camping. Both offer ways of creating just that perfect environment for you and those you love.

Performance. Style. Comfort. Fun. The 2012 Itasca Reyó.

Why Reyó?

- Mercedes-Benz® Sprinter chassis
- Fuel efficient and easy to maneuver
- Three 25' floorplans
- Queen bed 25Q and 25R, Twin beds with Flex Bed kit 25T
- Available StudioLoft[™] 25R and 25T
- RV Radio/rearview monitor system or available Infotainment Center/GPS system
- MCD American Duo® solar/blackout roller shades
- Ultraleather[™]
- Threshold[™] Quiet RV door and retractable screen door



DESIGNED FOR ENTHUSIASTS

Owners love their Itasca motor homes, and with good reason. The RV Dealers Association annually bestows the Quality Circle Award based on dealer ratings to manufacturers that provide exceptional products, service and support. Only one manufacturer has received this award for sixteen consecutive years: Winnebago Industries,® proud manufacturer of the Itasca Reyó.



25T Plateau with Sunset Cherry

RELAX AND ENJOY

The Itasca Reyo combines luxury and modern styling into a versatile lounge you can tailor to suit you. Nimble features like the swiveling cab seats and movable pedestal table maximize functionality. Both cab seats and the sofa come standard in Ultraleather—part of the upscale Ultrafabrics line that is durable and incredibly easy to clean. High quality vinyl floorcovering throughout the coach also adds to the ease of maintenance.

A mid-coach LCD TV (26" on 25Q/25T, 32" on 25R) comes standard. The TV mounting brackets allow the TV to be positioned for viewing even when the slideroom is retracted. The available

satellite TV antenna system with elevation sensing unit maximizes your potential for programming, and coupled with the coach stereo system, provides high-quality entertainment.

Because just any blind won't do, the Itasca Reyo offers as standard MCD American Duo solar/blackout roller shades, which control both light and privacy levels with separate, smoothly-retracting, roller shades. Discerning buyers can opt for the available dual-pane acrylic windows, complete with built-in screens and shades, for increased climate control in an easy-to-maintain package.



The innovative sliding system for the 26" LCD TV (25Q/25T) allows for optimal viewing, whether the slideout is extended or not. Convenient, isn't it?

COMPACT AND COMPLETE

The Itasca Reyo does a remarkable job of providing a fully equipped kitchen in a compact footprint, and harnesses Winnebago Industries' SmartSpace™ design philosophy across every inch. The standard microwave/convection oven shortens cooking time and offers food preparation flexibility. The vented range hood (NA 25Q) keeps steam at bay while you cook. The refrigerator/freezer unit is adaptable as well, with a pull-out freezer compartment so you can determine the amount of cold storage you need.

Both the sink and range top come with glass covers, expanding a countertop surface that is both modern and easy to clean. Sleek, gorgeous cabinetry houses full-extension drawer slides for optimum storage capacity, and the galley backsplash offers a chic touch. Water quality, no matter where your travels take you, is assured with the water filtration system available for the cold water faucet.

All models come with the movable pedestal table, which can be placed in front of the couch or swiveled cab seats for casual dining and lounge flexibility. Or you can choose to add the BenchMark® dinette (25R) for a more formal dining experience.

The IntelliSense One Touch Control® panel is conveniently housed above the refrigerator for easy access.



The two-burner range top offers two burner sizes, large enough to accommodate a 13" pan. A glass cover maximizes counter space when not in use.



The large, stylish stainless steel sink with flip-up faucet adds to your counter space with a smoky glass cover.





25T Flex Bed (Twins)



25T Studio Loft (up)



25T Flex Bed (Queen)



25T Studio Loft (down)

GET YOUR REST

All three Itasca Reyos offer comfortable and innovative sleeping solutions to suit your traveling needs. The 25R offers a queen bed with a 32" LCD TV at its foot for comfortable nighttime viewing. Or you may opt for the 25T with the Flex Bed system, where you can swiftly convert two twin beds into an oversized queen bed. The added benefit of underbed storage is just one more way we make the most of all available space.

Traveling with guests or kids? The StudioLoft™ (available 25R or 25T) adds additional sleeping space over the cab—you will easily have room for everyone.

Purists will enjoy the bedroom in the 25Q with a walk-around queen bed and innerspring mattress. It also offers the option of adding the Comfort Sofa Sleeper, covered in Ultraleather, for additional sleeping in the lounge area. Both the 25Q and 25T have 19" LCD TVs in the bedroom area for late night viewing.

No matter which model you choose, you will find ample wardrobe space in the Reyos, and the stylish appeal for which Itasca is known.



Goltasca.com is your resource for web-exclusive content and all the details you can't fit in a brochure!



PERFORMANCE COUNTS

You will absolutely love to get behind the wheel of the Itasca Rey. The Mercedes-Benz turbo diesel engine exudes superior maneuverability and automotive performance, so you will enjoy the drive as much as the destination.

Ultraleather cab seats offer plush comfort, and the stylish dash offers all the technology you could ever need. The rearview monitor and sideview cameras make all manner of navigation a snap. Coming or going, we've got you covered, and you will do it in style with the available dash appliqué for that added touch of elegance.

The RV Radio, standard, offers AM/FM stereo, CD player, MP3 input, and weather band, all from an easy-to-operate 6.5" LCD touch screen monitor. Available Sirius® satellite radio can add more than 100 radio programming options—perfect for those that enjoy an eclectic mix of music and talk radio.

Coach in park? The cab seats lift and swivel to become an integral part of the living space, and the powered sunvisor (available with the StudioLoft 25R/25T) drops down with the touch of a button when desired.



Take full advantage of available technologies with the Infotainment Center/GPS—you will know where you are at all times, set routes, and have touch screen control of information and entertainment.

DISCOVER THE DIFFERENCE

The difference is in the details. Explore the exceptional features and technologies that go into making Itasca motor homes simply the best.



Our SmartSpace™ design philosophy shines in the well-appointed galley; **Full-Extension Drawers** are sized to maximize storage and open wide on full-extension slides for easy access.



Power consumption is vitally important when dry camping, and our **LED Lighting** can reduce energy usage up to 70%—extending battery life when needed. Innovation at work for you.



With our smoothly retracting **MCD American Duo Solar/Blackout Roller Shades** you can control just how much light and privacy you want—no matter the time of day.



The **RV Radio** with its 6.5" LCD touch screen brings AM/FM stereo, weather band and MP3 input right to your fingertips, with the added security of a rearview monitor system to make navigation even easier.



Other motor homes employ tank monitors with probes that can corrode; our **TrueLevel™ Tank Monitor System** harnesses sonar technology to provide accurate readings every time.



When you choose the optional StudioLoft system, you can enjoy a **Powered Sunvisor** for the cab, which quickly and easily lets you adjust the visor height at the touch of a button (25R, 25T).



See clearly when you want to, block everything out when you don't. The available **Acrylic Windows** come with built-in shades that maintain your privacy.



You'll never have to track the dirt inside again, thanks to the available **Exterior Wash Station**. Easy access and a lighted pump switch enable you to clean your gear, your kids, even your dog before re-entering the coach.



You will simply love to drive the Reyo with its incredible fuel efficiency and stylish cab area—topped off with the available **Driver-Side Door** that features a low entry threshold for easy entrance.



The Winnebago Industries' exclusive **Threshold™ RV Door** incorporates aircraft technology to reduce noise and wind while ensuring an airtight seal. Simply brilliant.



Residential comfort comes to mind with our new **Retractable Screen Door**. You can enjoy letting the outdoor breeze in while keeping unwanted pests out.

THE FOUNDATION OF FUN

The Reyo's revolutionary design starts with the versatile Mercedes-Benz Sprinter F50 chassis. A powerful Mercedes-Benz turbo-diesel engine makes the Reyo a coach that is both fun to drive and a pleasure to call home. Adaptive

ESP® electronic stability control delivers more responsive control with ABS, traction control (ASR) and load adaptive control (LAC) that calculates the vehicle's mass and center of gravity to ensure optimum stability.

- 11,030-lb. GVWR
- Mercedes-Benz 3.0L Turbo-Diesel Engine
- Adaptive ESP Technology
- 5-Speed Automatic Transmission
- 180-amp. Alternator
- 5,000-lb.³ Hitch
- Available Stylized Aluminum Wheels
- Most fuel-efficient Class A motor home with unparalleled estimated fuel economy of 16+ miles per gallon*

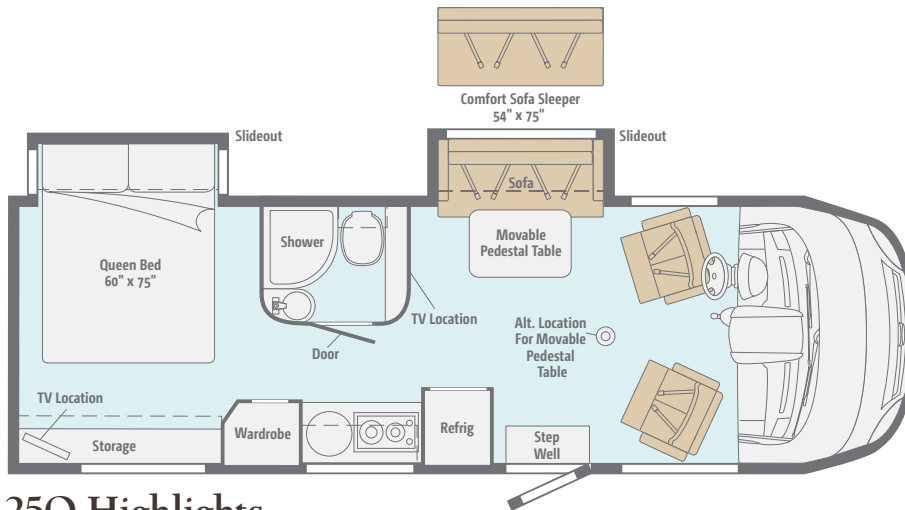
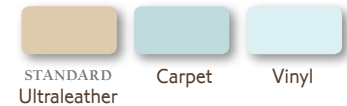
*Fuel efficiency will vary with driving conditions and individual driving practices.



GoItasca.com is your resource for web-exclusive content and all the details you can't fit in a brochure!

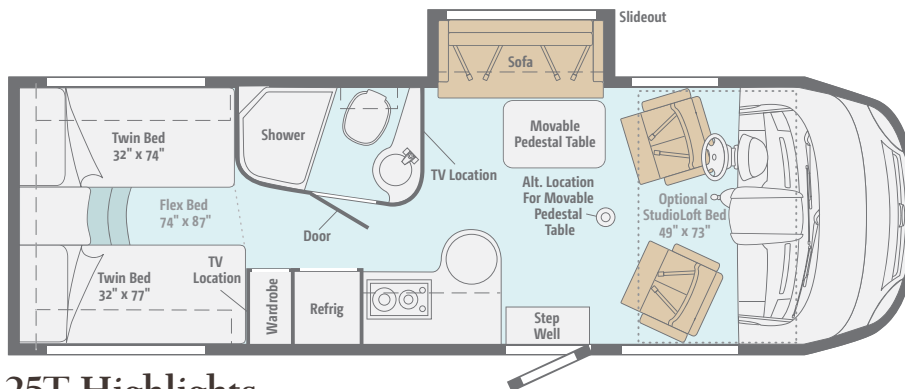
FLOORPLANS & SPECIFICATIONS

Dimensions shown are for sleeping space only and may vary due to styling differences. Dashed lines denote overhead storage areas. Floorplans and specifications are also available online at Goltasca.com.



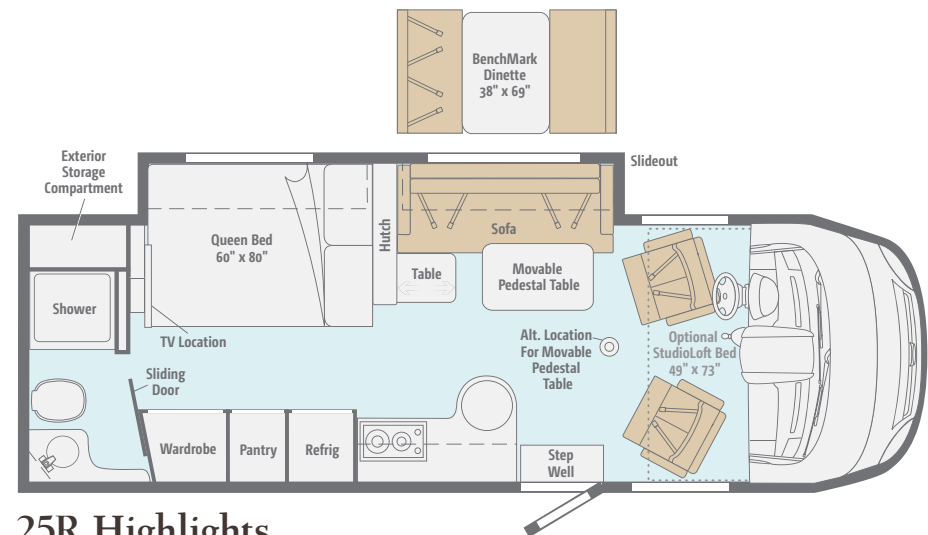
25Q Highlights

An Ultraleather sofa comes standard or choose the Comfort Sofa Sleeper. The movable pedestal table provides dining flexibility.



25T Highlights

The Flex Bed system in tandem with the available StudioLoft offers plenty of sleeping capacity.



25R Highlights

A rear bathroom and a full slideout with queen bed and Ultraleather sofa or the available BenchMark dinette give you plenty of room.



Experience the Reyo in action—take a virtual tour at Goltasca.com.

Mercedes-Benz® Sprinter F50 Chassis

**188-hp Mercedes-Benz 3.0L
6-cylinder turbo-diesel engine**

**5-speed automatic
transmission w/tip shift**

Hydraulic brakes w/ABS

Adaptive ESP® technology

180-amp. alternator

**Trailer Hitch⁵ 5,000-lb.
drawbar/500-lb. maximum
vertical tongue weight w/7-pin
connector**

Stainless steel wheel liners

Optional Equipment
Stylized aluminum wheels

Cab Conveniences

**RV Radio®/Rearview Monitor
System** 6.5" LCD touch
screen, CD player, weather
band, remotes, iPod interface
connector, rear camera w/one-
way audio

Cab Seats armrest, adjustable
lumbar support, power lift,
swivel/slide, recline

**Power steering w/tilt and
telescoping wheel**

**Power door lock w/remote
for main entry door**

**Removable one-piece fitted
carpet liner**

12-volt powerpoints

Power mirrors w/defrost

Cruise control

**Chassis/house battery radio
power switch**

Sideview video camera system

Sunvisors

Front wraparound curtain

Optional Equipment

**Sirius® satellite radio
w/complimentary 6-month
subscription**

Dash appliqué package

Infotainment Center/GPS
voice navigation, 7" LCD touch
screen w/PIP, Bluetooth,
remote, AM/FM/CD/DVD
radio, iPod interface connector,
Sirius® satellite ready

Interior

**IntelliSense One Touch
Control® LCD monitor panel**

**Key-activated slideroom
master lock switch**

Soft vinyl ceiling

Privacy curtain

Stereo System AM/FM, alarm
clock, CD/DVD player, input
jack

26" LCD TV (25Q, 25T)

32" LCD TV (25R)

Satellite system ready

Tinted windows

LED ceiling lights (coach)

**MCD American Duo® solar/
blackout roller shades**

**Amplified digital TV antenna
system**

Powered roof vent (bath and
galley, 25Q only)

Optional Equipment

**StudioLoft™ and powered
sunvisor** (25R, 25T) (NA 25R
driver-side w/optional door)

**Satellite TV antenna system
w/elevation sensing unit**

**Roof vent w/powered
ventilator fan** (bath)

**Dual-pane windows w/built-
in screen and shade** (NA 25R
w/optional dinette)

Kitchen

Microwave/convection oven

Vented range hood (25R, 25T)

**2-burner range top w/glass
cover**

**Refrigerator w/removable
freezer compartment**

**Stainless steel sink w/glass
cover and folding faucet**

Laminate countertops

Decorative backsplash

Optional Equipment

**Water filtration system w/
cold water faucet**

Bath

Flexible showerhead

**Retractable self-cleaning
shower door** (25R, 25T)

Shower curtain (25Q)

Skylight

Bedroom

**Twin beds w/foam
mattresses, Flex Bed kit,
pillows w/shams and access
to storage below** (25T)

**Queen bed w/expandable
base, foam mattress, pillows,
shams** (25R)

**Queen bed w/innerspring
mattress, pillows, shams,
bedspread and access to
storage below** (25Q)

19" LCD TV (25Q, 25T)

Exterior

Premium high-gloss skin

16' electric patio awning

Threshold RV™ entrance door

Retractable screen door

**Automatic entrance door
steps**

Lighted storage compartment

Mud flaps (rear)

Porch light

Stepwell light

Optional Equipment

**Driver's door w/power lock
and power window**
(NA w/StudioLoft)

Lower front protective mask

Heating & Cooling System

**13,500 BTU roof-mount air
conditioner w/heat pump**

**20,000 BTU low-profile
furnace**

Electrical System

Service Center cable TV input,
30 amp. power cord, portable
satellite dish hookup

**AC/DC load center, 45-amp.
converter/charger**

Auxillary start circuit

Battery disconnect system
(coach)

**2 deep-cycle, Group 24 RV
batteries**

**Automatic dual-battery
charge control**

**3,600-watt Cummins Onan®
MicroQuiet™ LP generator**

1,000-watt DC/AC Inverter

**Exterior TV jack and AC
duplex**

Optional Equipment

**3,200-watt Cummins Onan
diesel generator**

Plumbing System

Service Center color-coded
labels, city water hookup/tank
diverter fill, drainage valves,
10' sewer hose

**TrueLevel™ holding-tank
monitoring system**

**6-gallon water heater w/
electric ignition, 110 V/LP**

Winterization Package water
heater bypass valve and siphon
tube

On-demand water pump

**Permanent-mount LP tank
w/remote fill**

Optional Equipment

Heated drainage system

**Exterior wash station w/
lighted pump switch**

Safety

Seat belts

Child seat tether anchor (25R)

**LP, smoke and carbon
monoxide detectors**

10 BC fire extinguisher

Ground fault interrupter

High-mount brake lamps

Daytime running lamps

Fog lamps

Warranty⁶

**12-month/15,000-mile basic
warranty⁷**

**36-month/36,000-mile
limited warranty on structure⁷**

**10-year limited parts-and-
labor warranty on roof skin⁷**

- ¹ The height of each model is measured to the top of the tallest standard feature and is based on the curb weight of a typically equipped unit. The actual height of your vehicle may vary by several inches depending on chassis or equipment variations. Please contact your dealer for further information.
- ² The load capacity of your motor home is designated by weight, not by volume, so you cannot necessarily use all available space when loading your motor home.
- ³ Capacities are based on measurements prior to tank installation. Slight capacity variations can result due to installation applications.
- ⁴ Capacities shown are tank manufacturer's listed water capacity (W.C.) Actual filled LP capacity is 80% of listing due to overfilling prevention device on tank.
- ⁵ Actual towing capacity is dependent upon your particular loading and towing circumstances, which includes the GVWR, GAWR and GCWR as well as adequate trailer brakes. Please refer to the Operator's Manual of your vehicle for further towing information.
- ⁶ See separate chassis warranty.
- ⁷ See your dealer for complete warranty information.

NA Not Available

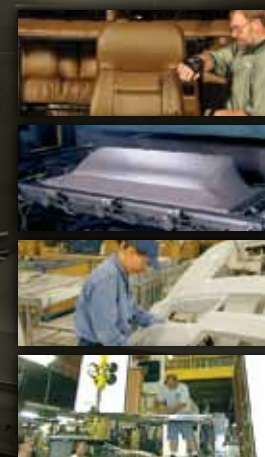
Not all items available in combination. See dealer for details.

Winnebago Industries® continuing program of product improvement makes specifications, equipment, model availability, and prices subject to change without notice. Comparisons to other motor homes are based on the most recent information available at printing.

Weights & Measures

	25Q	25R	25T
Length	25'5"	25'5"	25'5"
Exterior Height ¹	11'	11'	11'
Exterior Width	7'6"	7'6"	7'6"
Exterior Storage ² (cu. ft.)	26.5	52.1	76
Awning Length	16'	16'	16'
Interior Height	6'5"	6'5"	6'5"
Interior Width	7'3"	7'3"	7'3"
Freshwater Capacity w/Heater ³ (gal.)	34	33	34
Holding Tank Capacity - Black/Gray ³ (gal.)	36/36	40/30	36/36
LP Capacity ⁴ (gal.)	13	13	13
Fuel Capacity (gal.)	26.4	26.4	26.4
GCWR ⁵ (lbs.)	15,250	15,250	15,250
GVWR (lbs.)	11,030	11,030	11,030
GAWR - Front (lbs.)	4,410	4,410	4,410
GAWR - Rear (lbs.)	7,720	7,720	7,720
Wheelbase	170"	170"	170"

TAKE A TOUR



We're proud of our processes, state-of-the-art facilities and the people who make Winnebago Industries number one.

We invite you to visit our complex in Forest City, Iowa, for a first-hand look at the dedication and technology behind every motor home we build.

NO SHORTCUTS — NO COMPROMISES

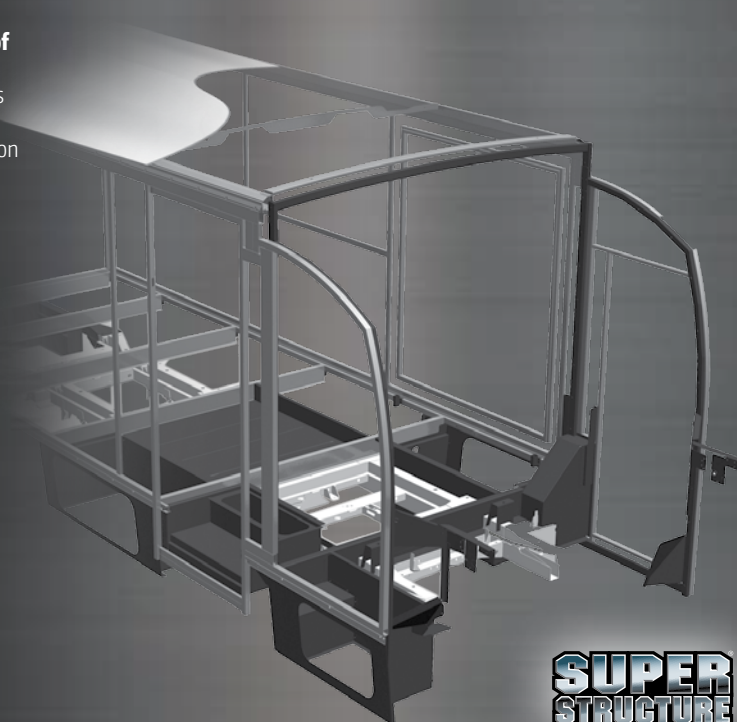
The crowned, one-piece **fiberglass roof** is backed by a 10-year limited parts-and-labor roof skin warranty. Fiberglass offers superior strength and durability over less attractive rubber roofs found on so many competitive models that can streak and degrade over time.

Durable, lightweight **Thermo-Panel® sidewalls** combine fiberglass, high-density block-foam insulation and the inner wall surface with aluminum support structures.

Metal substructures secure cabinets and appliances to add safety and stability.

An **electrodeposition coating** helps protect critical steel components.

Specially engineered **interlocking joints** connect the floor, sidewalls and roof into a cohesive unit.



**SUPER
STRUCTURE**



You can compare features. You can compare styles. But when it comes to quality construction, there is no comparison. Only motor homes manufactured by Winnebago Industries harness the legendary strength and durability of our SuperStructure® construction process—a process we've been perfecting for more than 50 years.

SuperStructure means a solid framework, steel and aluminum substructures and components built in-house to our exacting standards. It means managing each detail to ensure the integrity and quality of every coach. It means barcoding parts to save time and frustration during service and running every coach through a high-pressure leak test before it leaves the factory.

Where other manufacturers cut corners, SuperStructure ensures the features you can't see are treated with the same care as the ones you can. When you buy an Itasca motor home, you are getting a coach that is built for you—and built to last.

EXTERIORS

Deluxe graphics or full-body paint highlight the fresh look of the Itasca Rey.



Black Mist
DELUXE GRAPHICS



Sand
DELUXE GRAPHICS



Shoreline Mist
FULL-BODY PAINT



Pewter
FULL-BODY PAINT



Red Dawn
FULL-BODY PAINT



Tarnished Silver
FULL-BODY PAINT

DÉCOR

Enjoy the soft feel and upscale luxury of Ultraleather™ in the fabric collection of your choice. Beautiful cabinetry in Sunset Cherry or Mocha Cherry with stylish hardware provides plentiful storage.

Trail Blazer *Elegant and tranquil earth tones with a pop of rich color.*



Cocoa Ultraleather



Accent



Bedspread



Vinyl

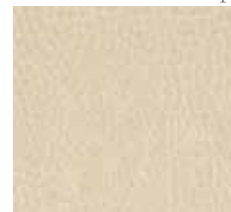


Marble
Wall Board

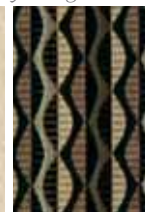


Antique Topaz
Wilsonart Laminate
Countertop

Smoke Screen *A play on light and dark with bold contrast and modern appeal.*



Surfside Ultraleather



Accent



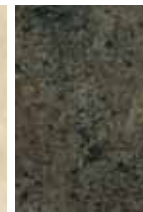
Bedspread



Vinyl



Driftwood
Wall Board



Alpine Passage
Wilsonart Laminate
Countertop

Plateau *Earthy warmth evokes desert sands and open spaces.*



Briarwood Ultraleather



Accent



Bedspread



Vinyl



Sashay
Wall Board



Alpine Passage
Wilsonart Laminate
Countertop



Sunset Cherry



Mocha Cherry

Fabrics and carpets may change without notice or obligation.

DON'T MISS OUT



Caravans, rallies, local and state events, and exclusive RV travel benefits can all be yours as a WIT Club member—and you can meet like-minded folks that possess the same enthusiasm for traveling this great nation of ours. It's a wonderful way to make your Revo a way of life. Learn more about the Winnebago-Itasca Travelers Club at WITclub.com.

Members enjoy:

- Caravans and Rallies
- Local and State Group Activities
- RV Travel Benefits



Four simple questions
to ask *before* you buy.

visit
BetterBuiltRVs.com

COMMITTED TO SERVICE

We back our motor homes with best-in-class support both before and after the sale:



TRIPSaver
EAST TRACK PARTS

- 12-month/ 15,000-mile basic limited warranty
- 36-month/36,000-mile limited warranty on structure
- 10-year standard limited parts-and-labor roof skin warranty
- Complimentary 24-hour roadside assistance program
 - RV Technical Assistance Hotline
 - RV Service Appointment Assistance
 - Emergency Trip Interruption
 - Emergency Message Service
 - Nationwide Trip Routing
 - Fee-Free Travelers Cheques
- TripSaver Fast Track Parts guarantees that in-stock warranty parts ship directly to your dealer within 24 hours
- National dealer service network



THE MOST RECOGNIZED
NAME IN MOTOR HOMES*

NYSE: WGO
Goltasca.com



For Sales and Service Information Contact: