

# Passport

ULTRA LITE  
*by Keystone*

Go Anywhere.







Shown above: All Passport models come equipped with an extra large double door refrigerator. Along with the adjustable shelving pantry you can always have what you need for those campsite meals.

Shown below: The adjustable shelving pantry doubles as a wardrobe. Perfect for the trips when you need to bring those extra clothes or larger items.



## Enjoyable Interiors

Passport is a true example of form meeting function. With space and amenities maximized you can enjoy every aspect of your Passport. All of the Passport dinettes feature unobstructed storage, extra large windows, and overhead cabinets. Select models, like the 290BH shown here in Tuscan décor, have the media tower making it easy to view the HD TV from the main living area or the bedroom. The 290BH and other select models have a full length bar with 2 barstools included for the extra seating and counter space you need.





Shown above: The media tower in select models makes it easy to view TV or a DVD from anywhere in the main living area. Swivel the TV, as shown below, and it turns into a full bedroom entertainment center!



All Passports are equipped with an AM/FM Stereo CD/DVD/MP3 player and aux. input. With 2 interior mounted ceiling speakers and 2 mounted outside you will never miss a beat!

One thing Passport is not short on is space! With some models including the large u-shape dinette, shown above in the 300BH in Havana, you can invite the family, the friends and even your camping neighbors for any type of social gathering. Located under the chaise lounge end of the u-shape dinette is a large trunk for storing those bigger items that just don't seem to fit in other trailers. Not only good for storage and dining, the u-shape dinette converts into a "jumbo-sized" bed for comfortable, easy sleeping.







Shown above: All of our Passport models have 2 full extension drawers in the galley. Mounted on steel glides, these drawers make it easy to grab what you need.

Do you want to go camping? Do you want a trailer that most vehicles on the road today can tow? Welcome to Passport, where we put everything you need to go camping in a lite weight easy to tow trailer that's functional and stylish!



## Life is Easy

The Passport interiors are not only stylish but functional, shown above in Tuscany decor. All of the Passport galley slides feature a spacious contoured counter top, full overhead storage, large windows with elegant décor, and vast under sink storage. The sofa is equipped with built in cup holders for the convenience of accommodating your favorite beverage. You will also notice the two tone wood treatment throughout giving your Passport the modern look you are searching for.



Shown right: Our 288RK, shown here in Harvest décor, has hanging closets with full length mirrors, a TV shelf, and a desk area for you to stay connected.

Shown left: All the Passport models have easy to use overhead storage. Most open up into a single large compartment rather than two small ones. This makes bringing along those larger cooking items easy!





Shown above: Small showers? Not in a Passport! With the large corner glass shower in the 195RB, 245RB and 286RB, you hardly realize you are camping. All of our tubs and showers have built-in shelves and a skylight for added room and extra light.



Shown above: We didn't forget the kids. In our 290BH we gave them a full hanging wardrobe, shoe storage, and two extension drawers. Above all of this is a large counter top with TV hook-up.

Shown right: All your accessory controls are housed in the fully functional Convenience Center. Inside you'll find the slide room switch, light switches for porch and interior lights, tank monitors, and electric awning switch. The hinged cover is even outfitted with coat and key hooks and a corkboard for messages.



Shown right: Need a place to put your shoes? In most Passport models we have convenient shoe storage located directly by the entrance door.





# Construction & Features



HD Flat Screen Television



**Online videos available**

Want to know more about these amazing features? Go to [www.keystone-passport.com](http://www.keystone-passport.com) and look for the video symbol!



Deep Sink with High-Rise Faucet



Outside Speakers and Power Awning



Pass-Thru Storage with Light



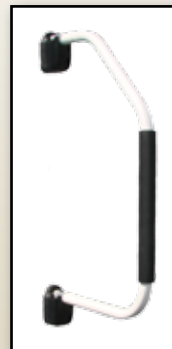
Stabilizer Jacks



1. Gel Coated Filon Exterior
2. Luan Layer
3. Hi-Density Block Foam Insulation
4. Interior Wallboard
5. Total Aluminum Frame
6. Residential Grade Linoleum
7. 1st Layer Floor Decking
8. 2nd Layer Floor Decking with Staggered Seams
9. Hi-Density Block Foam Insulation
10. Aluminum Floor Studs
11. 3rd Layer Floor Decking
12. Moisture Barrier Wrap
13. Enclosed Underbelly

14. PACO I-Beam Frame
15. One Piece Rubber Roof
16. Roof Decking
17. R-11 Insulation
18. 5" Crowned / Stamped Roof Trusses
19. Hurricane Straps
20. Diamond Plate
21. Dual Battery Tray
22. Sloped Slide Roof
23. Wiper Seals
24. Bulb Seal in T-Track

25. Aerodynamic Front Wall
26. Easy Lube Axles
27. Load Equalization Axles
28. Radial Tires
29. Radius Entry Steps



Folding Entry Assist Handle



Slide-Out Cook Center (Passport only)



Foot Flush Toilet



LP Tank Cover



Tank cover opens for easy access to tanks.



Outside Shower

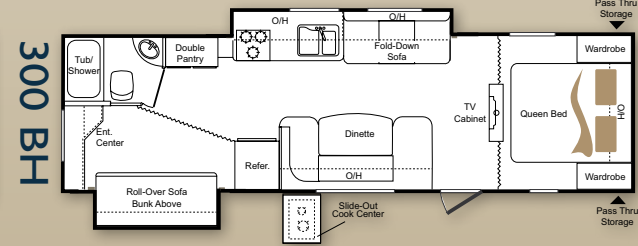
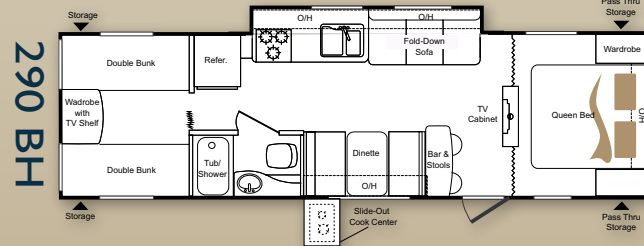
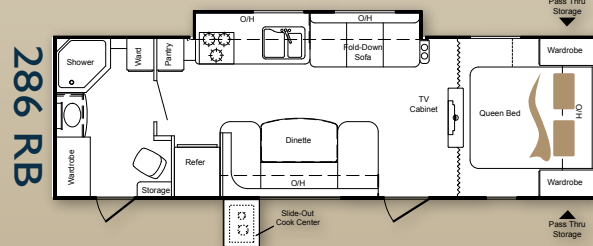
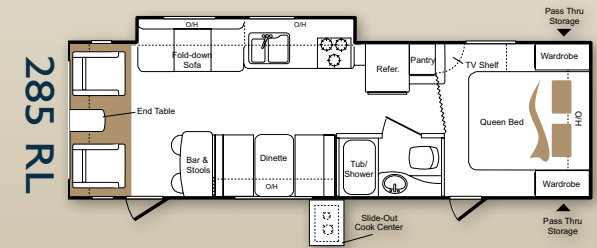
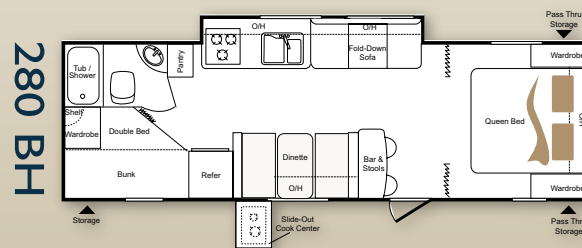
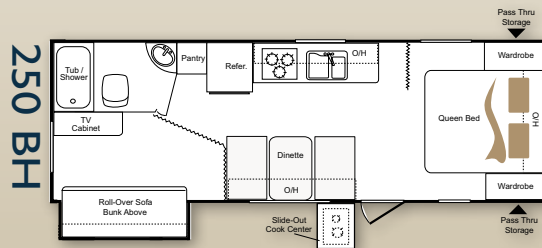
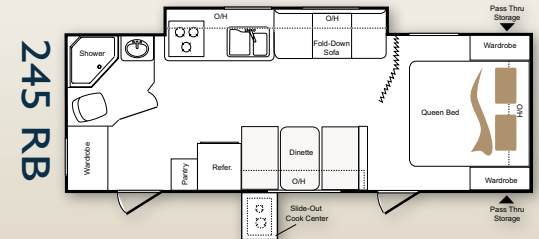
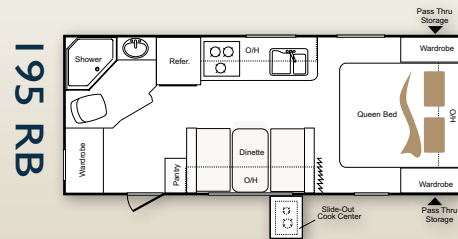


Load Equalization Axles

Go Anywhere...



# Floorplans



	195 RB	245 RB	250 BH	280 BH	285 RL	286 RB	290 BH	300 BH
Shipping Weight	3880	4591	4349	4752	4909	4894	5134	5484
Carrying Capacity	2050	1409	1691	1293	1296	1154	2441	2051
Hitch	330	400	440	445	605	448	575	535
Exterior Length	23' 10"	27' 2"	27' 10"	31' 2"	31' 2"	31' 2"	33' 3"	33' 6"
Ext Height	10' 1"	10' 2"	10' 2"	10' 2"	10' 2"	10' 2"	10' 2"	10' 4"
Fresh Water gal.	30	30	30	30	30	30	30	30
Waste Water gal.	30	30	30	30	30	30	30	30
Grey Water gal.	30	30	30	30	30	30	30	30
LPG Capacity lbs.	40	40	40	40	40	40	40	40



# ULTRA SLIDE

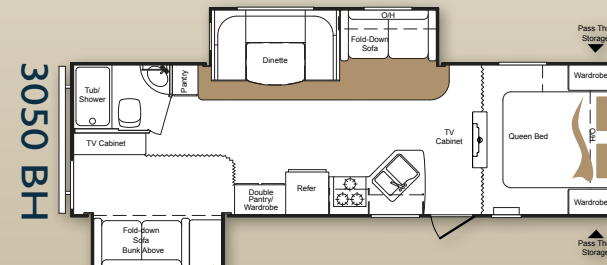
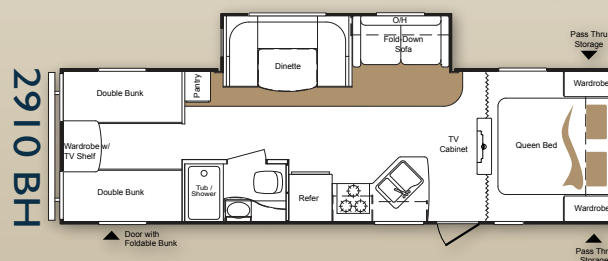
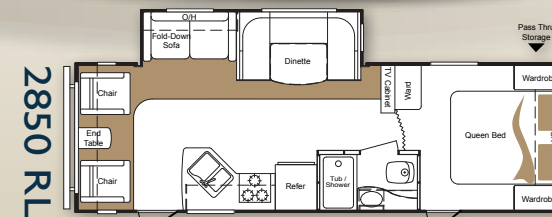
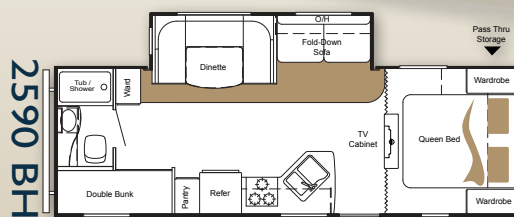
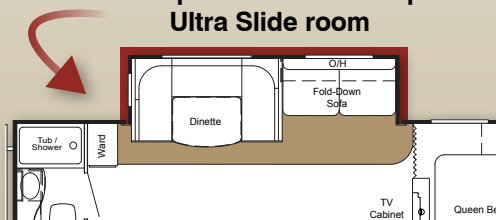
Passport  
ULTRA-LITE

www.keystone-passport.com

## Passport ULTRA-LITE Grand Touring

- The first true ultra-light 36" deep slide
- 20% lighter weight than other ultra lite deep slides
- More spacious living area with flush floor design
- Floorplans start at under 5,000 pounds shipping weight

### Passport's new 36" deep Ultra Slide room



Shown right: The Galley area in the GT Series is ultra workable. With large under sink storage, full pull out drawers and room for your waste basket and larger items its just like home. The angled double bowl sink with the metal high arch faucet allows for easy use and added counter top space which is always a plus!



	2590 BH	2850 RL	2910 BH	3050 BH
Shipping Weight	4840	5095	5465	5725
Carrying Capacity	2360	2105	1735	1475
Hitch	590	650	725	590
Exterior Length	28' 10"	30' 4"	32' 10"	32' 8"
Ext Height	10' 7"	10' 7"	10' 9"	10' 9"
Fresh Water gal.	30	30	30	30
Waste Water gal.	30	30	30	30
Grey Water gal.	30	30	30	60
LPG Capacity lbs.	40	40	40	40





# ULTRA SLIDE

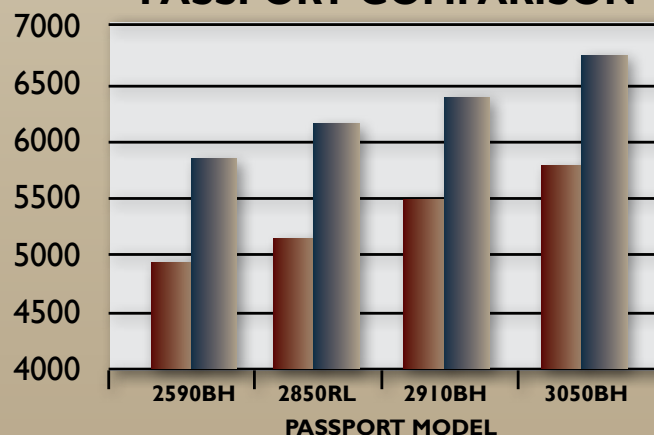
The Passport Ultra Lite Grand Touring joins conventional size with a true Ultra Lite travel trailer. Our engineers and design team have met the demands of lite weight buyers by giving them the room they desire while keeping the Passport GT easily towable by today's SUV's and half ton vehicles. The Ultra Slide technology utilized allows Passport to have floorplans starting less than 5000 pounds. We didn't just add the name Ultra Lite to a full size product, we reinvented it.

You can immediately feel the difference when you step in to a Passport Ultra Lite Grand Touring. With the full 36 inch Ultra Slide you have the conventional room you need without the extra weight. Passport GT gives you the added room with a flush floor slide, oversized u-shape dinette and still keeps the weight 20% less than most of our competition. And we didn't do it by taking anything out of the Passport. We still give you the features and living comforts you expect that make camping easy in a Passport. So go ahead live large, go light, and get more with a Passport Ultra Lite Grand Touring.



The full depth 36 inch slide room in the Passport GT, shown above in Havana, adds the ultimate space and convenience. With the oversized u-shape dinette and adjustable table, you have plenty of room for the whole family as well as a true full size bed when converted. With the adjustable dinette table you also have a perfect size coffee table for use in front of the sofa or anywhere. Not just conventional size but easy camping, that's what Passport Ultra Lite Grand Touring is all about.

## PASSPORT COMPARISON



Passport Ultra Lite Grand Touring rises above the competition, but not even close to their weights!

\*Competitors deep slide lite weight models for comparison were chosen based on similar length, layout and number of slides

Passport  
Similar deepslide lite weight



# Standard Features

## PASSPORT & PASSPORT GT

### Chassis

- ☐ Engineered specifically for each floor plan
- ☐ Tube style bumper w/ sewer hose storage
- ☐ Fully welded outriggers
- ☐ 100% "E" coated Paco frame
- ☐ Cambered for added structural support
- ☐ Extra support cross members
- ☐ Electric slide out system
- ☐ Enclosed and heated underbelly (N/A 195RB)

### Construction

- ☐ Welded aluminum framed sidewalls
- ☐ Laminated gel-coated filon exterior walls
- ☐ High density bead foam insulation in sidewalls (R-7 insulation)
- ☐ Laminated aluminum framed floor 2" thick
- ☐ One piece breathable Darco protective wrap
- ☐ R-11 floor insulation
- ☐ Stamped galvanized 5" thick crowned rafters
- ☐ One piece seamless Rubber roof
- ☐ R-11 ceiling insulation

### Exterior Features

- ☐ Insulated lockable radius baggage doors with hold backs
- ☐ Insulated radius entrance door with screen door
- ☐ Double entry steps at main door
- ☐ Aerodynamic fender skirts
- ☐ Heavy duty front mechanical jack
- ☐ 4 scissor style stabilizer jacks
- ☐ 2-20lb. Propane bottles with flip top cover
- ☐ Dual battery rack over A-frame
- ☐ Rain gutters with downspouts
- ☐ Electric adjustable awning
- ☐ Lighted exterior pass thru storage compartment
- ☐ Outside cook center w/stove (Passport only)
- ☐ Portable Outside Grill (GT only)
- ☐ Patio entrance light

- ☐ Exterior shower w/ hot & cold
- ☐ Fold away exterior grab handle
- ☐ Front diamond plate
- ☐ Load Equalization (spread axle design)
- ☐ EZ lube axles
- ☐ Exterior speakers
- ☐ Roof air vent system
- ☐ Exterior light at dump valves

### Interior Features

- ☐ Residential style furniture with high grade fabric
- ☐ Convenience center with slide, lights, awning and water system controls
- ☐ 13.5 BTU ducted A/C
- ☐ Forced air furnace
- ☐ 6 gallon gas/electric DSI water heater
- ☐ Water system winterization ready
- ☐ Residential grade durable linoleum
- ☐ Digital TV system
- ☐ 12 volt DVD/CD/AM/FM stereo with aux input & quality sound speakers
- ☐ 19" LCD flat screen HD TV with 12V operation
- ☐ 2 tone wood accents
- ☐ Residential light fixtures in slide room (GT only)

### Kitchen

- ☐ Extra large double door refrigerator
- ☐ Oversized 60/40 residential sink
- ☐ Metal high-rise faucet
- ☐ Microwave with carousel
- ☐ 3-burner high output range with oven
- ☐ Range hood with 12-volt exhaust fan and light
- ☐ Residential hardwood cabinet doors
- ☐ Coordinated wall paper border

### Bathroom

- ☐ Medicine cabinet with mirror
- ☐ Tub surround with built-in shelves
- ☐ Radius shower curtain
- ☐ Pedestal foot flush toilet
- ☐ Skylight over tub
- ☐ 12 volt power exhaust fan

### Bedroom (Main)

- ☐ Quilted bedspread
- ☐ Decorative headboard
- ☐ Oversized wardrobe
- ☐ Nighttime reading lights

### Safety Package

- ☐ 4 wheel electric brakes
- ☐ Break-away switch
- ☐ Heavy duty safety chains with clasp
- ☐ Tinted safety glass windows
- ☐ Multiple emergency egress windows
- ☐ GFI receipts
- ☐ Carbon monoxide detector
- ☐ Smoke alarm
- ☐ Fire extinguisher
- ☐ Propane gas leak detector
- ☐ Dead-bolt lock on entrance doors
- ☐ Manual override on slide system
- ☐ Spare tire kit





# Standard Features

## PASSPORT EXPRESS SUPER LITE

- ☐ **Chassis**
- ☐ Engineered specifically for each floorplan
- ☐ Fully welded outriggers
- ☐ 100% "E" coated
- ☐ Extra support cross members
- ☐ Electric slide out system

- ☐ **Construction**
- ☐ 8' Wide construction
- ☐ Welded aluminum framed sidewalls
- ☐ Laminated gel-coated flon exterior walls
- ☐ High density bead foam insulation
- ☐ in sidewalls (R-7 insulation)
- ☐ Laminated aluminum framed floor 2" thick
- ☐ R-11 floor insulation
- ☐ Galvanized 5" thick stamped crowned rafters
- ☐ One piece seamless rubber roof
- ☐ R-11 ceiling insulation
- ☐ 78" Interior ceiling height

- ☐ **Exterior Features**
- ☐ Insulated lockable radius baggage doors with hold backs
- ☐ Insulated radius entrance door with screen door
- ☐ Heavy duty front mechanical jack
- ☐ 2-20lb. Propane bottles with flip top cover
- ☐ Rain gutters with downspouts
- ☐ Color coordinated awning
- ☐ Lighted exterior pass thru storage compartment
- ☐ Dual battery rack over A frame
- ☐ Patio entrance light

- ☐ Exterior light at dump valves
- ☐ 4 scissor style stabilizer jacks
- ☐ Portable outside grill
- ☐ Exterior shower w/ hot & cold
- ☐ Front diamond plate
- ☐ EZ lube axles
- ☐ Exterior speakers

- ☐ **Interior Features**
- ☐ Residential style furniture with high grade fabric
- ☐ Digital TV system
- ☐ Forced air furnace
- ☐ 13.5 BTU A/C
- ☐ 6 gallon gas/electric DSI water heater
- ☐ Water system winterization ready
- ☐ Residential grade durable linoleum
- ☐ 12-volt CD/DVD/AM/FM stereo with aux input & quality sound speakers
- ☐ 15" LCD flat screen HDTV w/ 12 volt operation

- ☐ **Kitchen**
- ☐ Extra large double door refrigerator
- ☐ Oversized 60/40 residential sink
- ☐ Metal high-rise faucet
- ☐ Microwave with carousel
- ☐ 3-burner high output range
- ☐ Range hood with 12-volt exhaust fan and light
- ☐ Residential hardwood cabinet doors
- ☐ Coordinated wall paper border

- ☐ **Bathroom**
- ☐ Medicine cabinet with mirror
- ☐ Tub surround
- ☐ Shower curtain
- ☐ Pedestal foot flush toilet
- ☐ 12 volt power exhaust fan

- ☐ **Safety Package**
- ☐ 4 wheel electric brakes
- ☐ Break-away switch
- ☐ Heavy duty safety chains with clasp
- ☐ Tinted safety glass windows
- ☐ GFI receipts
- ☐ Carbon monoxide detector
- ☐ Smoke alarm
- ☐ Fire extinguisher
- ☐ Propane gas leak detector
- ☐ Dead-bolt lock on entrance doors
- ☐ Manual override on slide system
- ☐ Spare tire kit





The Express Super Lite gives you more for less. We have increased the size of the bunk ends by 10% over traditional hybrids. Shown right in Harvest, the 190EXP with the oversized bunk ends also shows all 3 sides of the Sunbrella tent enclosure open with screens for great ventilation.



Oversized lighted pass-thru storage compartment.



Portable outside grill with LP connection.



15" LCD HD TV with DVD/CD/AM/FM stereo with auxiliary input.



The Express **Double Compression** closure system has 2 points of contact for the bunk ends to ensure an accurate fit and the handle is positioned low for easy use by anyone.



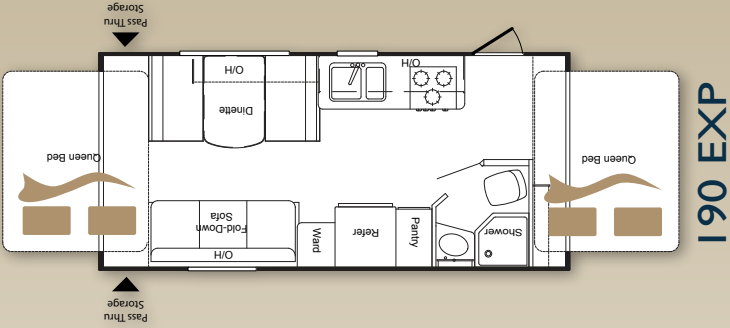
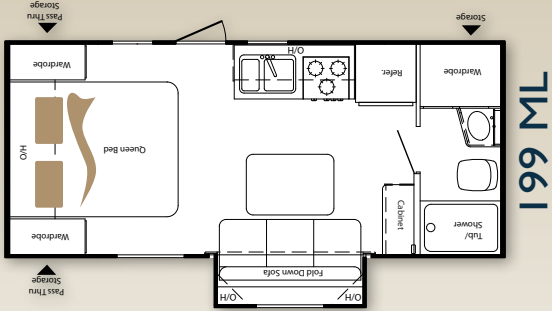
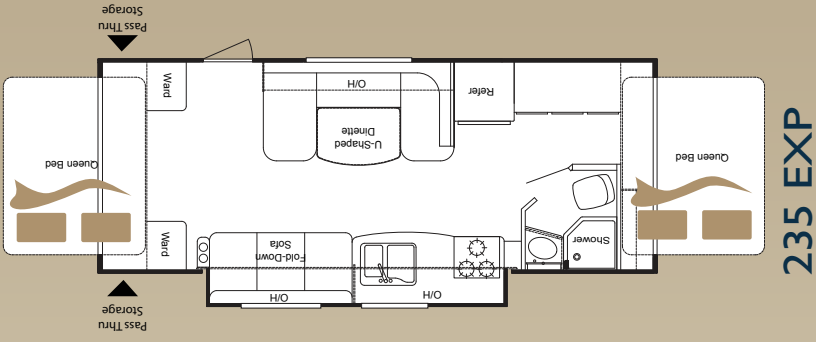
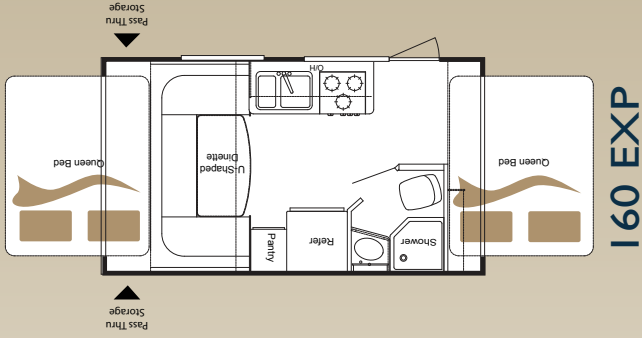
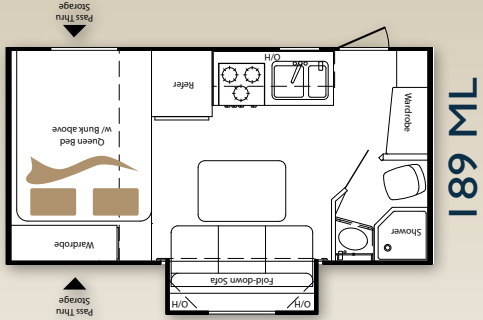
Sunbrella performance fabric was chosen for Express bunk end enclosures because of the superb water repellency with no lose of breathability, giving you a comfortable and hassle free camping experience in an Express Super Lite.



The Express **Secure Track** keeps the tent end permanently attached. This not only makes set up a breeze but doesn't allow anything to get in or out of your sleeping area.



# Express Floorplans



189 ML	199 ML	160 EXP	190 EXP	235 EXP
3275	3491	TBD	3450	TBD
2570	2431	TBD	1750	TBD
245	322	TBD	370	TBD
19'	20' 7"	TBD	20' 7"	TBD
10' 1"	10' 1"	10' 1"	10' 1"	10' 1"
30	30	30	30	30
30	30	30	30	30
30	30	30	30	30
30	30	30	30	30
Grey Water gal.	40	40	40	40
Waste Water gal.	40	40	40	40
Fresh Water gal.	40	40	40	40
Exterior Height	10' 1"	10' 1"	10' 1"	10' 1"
Exterior Length	19'	20' 7"	TBD	TBD
Hitch	245	322	TBD	TBD
Carrying Capacity	2570	2431	TBD	TBD
Shipping Weight	3275	3491	TBD	TBD



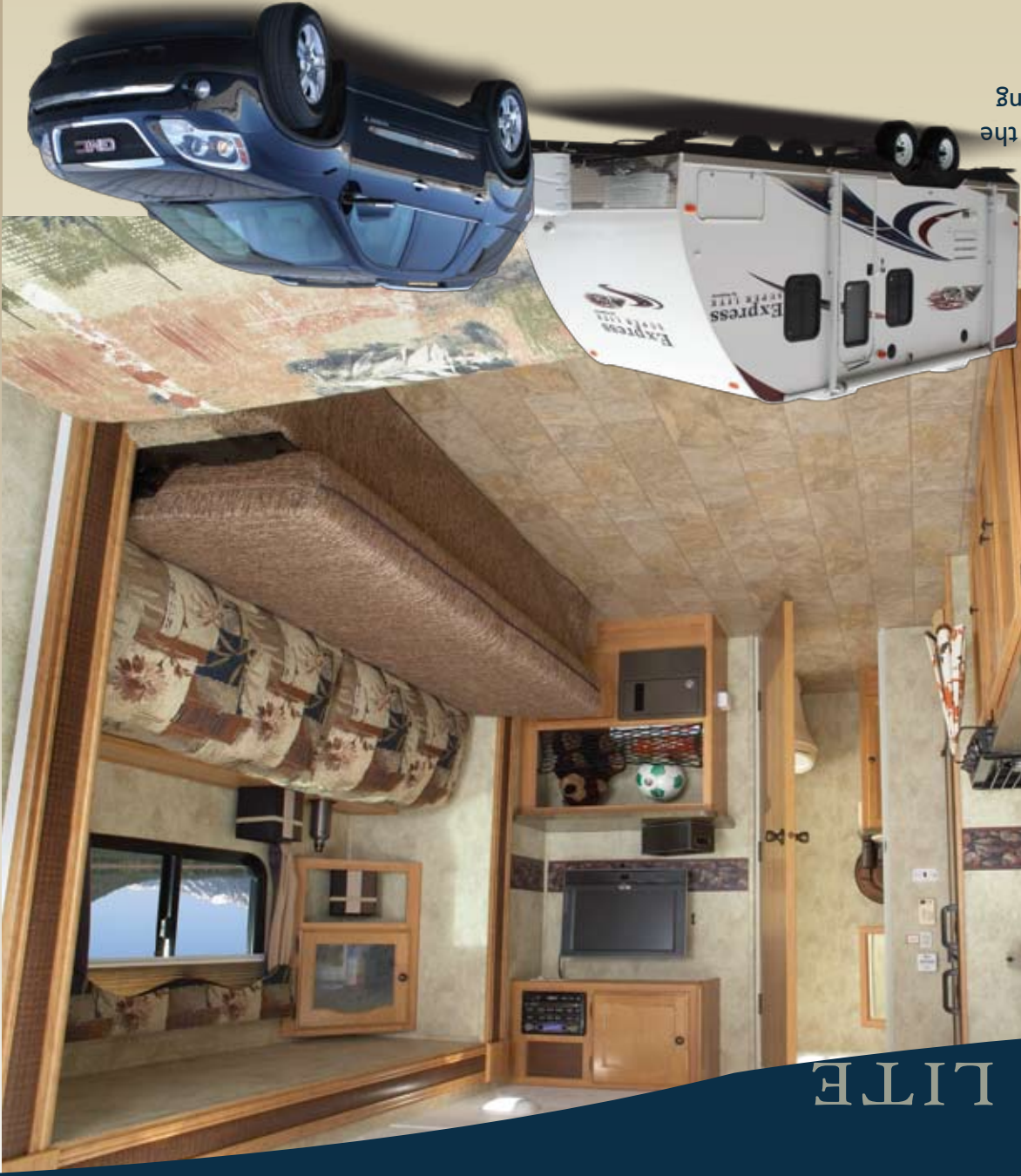
With many vehicles on the road today having reduced tow ratings and smaller, more fuel efficient engines, the drive to meet these vehicle owners' needs has inspired the Express Super Lite. With all of our models weighing less than 3500 lbs, the Express can be towed by almost all vehicles on the road today. We have taken all the essentials and more and put them in a compact, super lite weight trailer.

Express Super Lite doesn't mean small and unlivable. The Express comes standard with 78" of interior height, 8 ft. wide, a full size sofa, 6 cu. ft. double door refrigerator, 15" TV, and this is just the beginning of what we offer over our competition in this weight category. Shown here is our 199ML in Harvest decor. The standard removable table (not shown) in the 189ML and 199ML makes it is easy to dine inside or outside. Simply store the table in the large lighted front pass thru storage and have even more living space.

# Express SUPER LITE

\*Sink cover not included.

The Express Super Lite by Passport left the weight at the curb and threw in everything including the kitchen sink!





# Express SUPER LITE by Keystone

## More for Less.

- 8' Wide Construction
- 78" Interior Ceiling Height
- 32 cu. ft. of Pass Thru Storage
- 30/30/30 Holding Tank Capacity
- Crossover & SUV Towable Floorplans



Your PASSPORT dealer:

\*Product information is as accurate as possible as of the date of publication of this brochure. Features, floor plans, and specifications are subject to change without notice. Please also consult Keystone's web site at [www.keystone.com](http://www.keystone.com) for more current product information and specifications. Tow Vehicle disclaimer: CAUTION: Owners of Keystone recreational vehicles are solely responsible for the selection and proper use of tow vehicles. All customers should consult with a motor vehicle manufacturer or their dealer concerning the purchase and use of suitable tow vehicles for Keystone products. Keystone disclaims any liability or damage suffered as a result of the selection, operation, use or misuse of a tow vehicle. KEYSTONE'S LIMITED WARRANTY DOES NOT COVER DAMAGE TO THE RECREATIONAL VEHICLE OR THE TOW OF THE TOW VEHICLE. Jan. 2010

[www.keystone-passport.com](http://www.keystone-passport.com)



**Keystone RV  
Company**

2642 Hackberry Dr. • Goshen, IN 46526  
(574) 535-2100

Jan/10