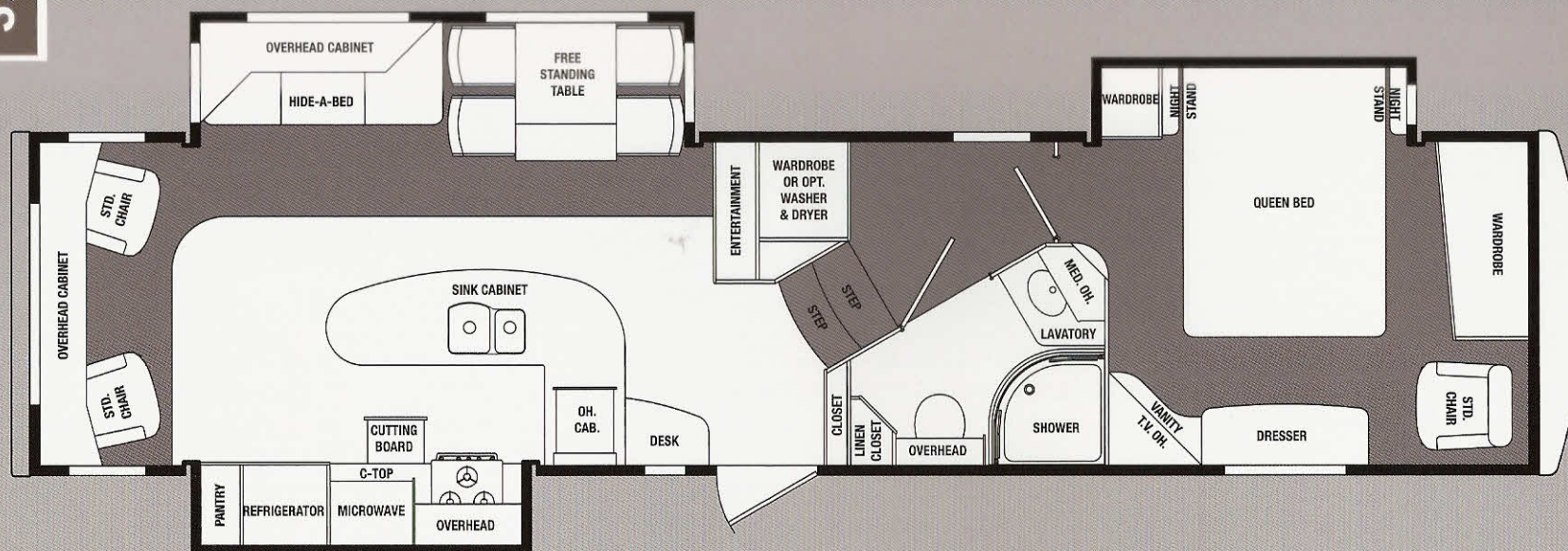


# WEST POINTE

3783 SB



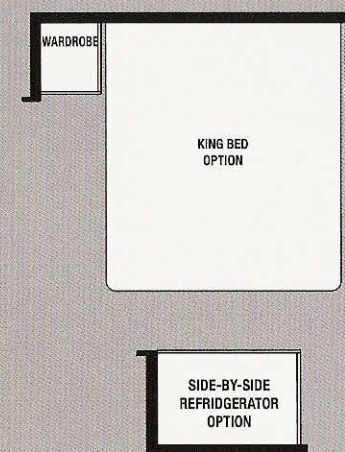
## SPECIFICATIONS

### 3783 SB

Exterior Length	38'- 3 5/8"
Exterior Height with A/C	12'- 10 1/4"
Exterior Width	9'- 5 7/8"
Interior Height	7'5"
Dry Hitch Weight	2,797
Dry Gross Weight	14,344
GVWR	18,000 lbs.
Triple 6,000 lbs.	Str. Axles

Tire Size	LT235/80R16G
Hitch Height	48 1/2"
Awning Size	20'
Furnace Size	40,000 BTU
Dometic Gas/Electric Refrigerator	Double Door
Fresh Water Capacity	98 gal.
Black Water Capacity	50 gal.
Gray Water Capacity	90 gal.
Sleeping Capacity	4

## AVAILABLE OPTIONS





QUALITY

WEST  
POINTE

# DYNA LOCK®

## PERFORMANCE ENGINEERED

The only structural plywood flooring system with a Lifetime Limited Warranty

- Designed and manufactured specifically for Recreation Vehicles
- Precisely engineered tongue and groove locking system adds dimensional stability
- Bonded with 100% exterior grade adhesives guaranteed not to delaminate
- Quality standards independently audited, routinely tested, and fully certified

*ahead of the curve*



Ahead of the curve...

Sunnybrook products feature

# DYNA LOCK®

## PERFORMANCE ENGINEERED FLOORING

The only structural plywood flooring system with a Lifetime Limited Warranty.



AFFILIATED RESOURCES, INC.  
PROVIDING SOLUTIONS



# Formaldehyde FREE

Meets January 1, 2009 CARB emission standards.

**10 YEAR**  
LIMITED  
WARRANTY

Genesis Products, Inc. offers a 10 year limited warranty on our "Endura" Oak Panel Cabinetry Doors. For complete warranty details contact Genesis Products, Inc.

Genesis Products, Inc.  
Hardwoods  
2515 Industrial Park Dr.  
Goshen, IN 46526

**10 YEAR**  
LIMITED  
WARRANTY

*"Endura"*  
Cabinet Doors

*Structurally superior inside—  
Naturally beautiful outside...*

*"Endura"* Cabinet Doors

*Structurally superior inside – Naturally beautiful outside...*

"Endura's" superior dimensional stability is achieved through the combining of today's advanced manufacturing technology and the timeless beauty of nature's hardwood. The result is a cabinet door, **WARRANTED for TEN YEARS** against *warping, cupping or splitting*, that endures long-term exposure to the extreme changes of temperature and humidity encountered by RVs season after season.

This same advanced manufacturing process has been adopted by many of America's leading home furniture manufacturers, and with good reason...

- the beautiful look of a "seamless" door panel greatly enhances visual aesthetics
- today's advanced technology delivers a product that surpasses traditionally constructed door panels, but still delivers all of nature's charm and character
- by selecting "Endura" Cabinet Doors you are practicing environmental responsibility and stewardship, because our products are "green certified"
- this product is made of 100% wood solids

"Endura" Cabinet Doors are a product of Genesis Products, Inc., Hardwoods, Goshen, Indiana