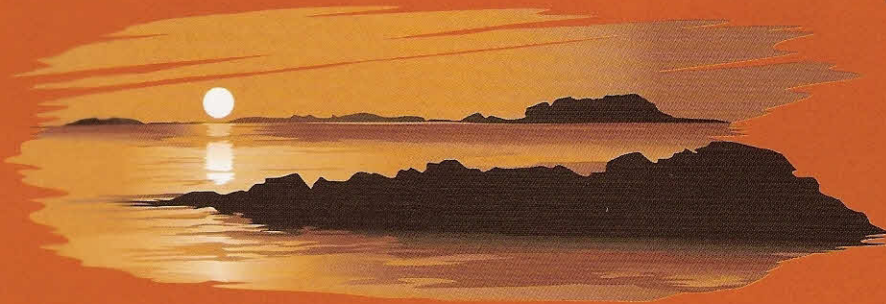


SUNSET CREEK

by Sunny Brook



WHAT AREN'T YOU DOING THIS WEEKEND?



Model 298 BH shown.

WE'RE THERE.

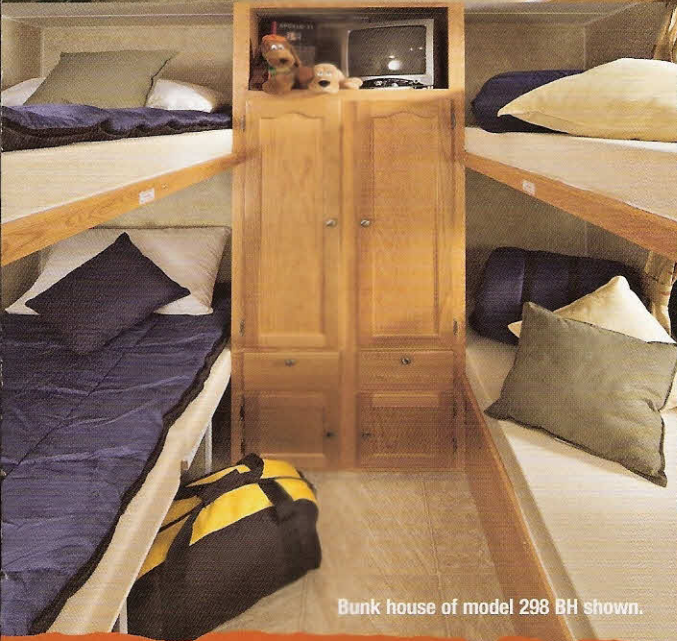


Model 298 BH shown.

Some RV manufacturers offer high styling and quality. Others provide value through a lower price. Now and then it can work both ways. Introducing Sunset Creek. The best of all worlds, perfect for any adventure in your world. Great amenities make Sunset Creek incredibly comfortable and stylish. Just like being home. And quality construction is highlighted by our AX5 aluminum framing, heated and enclosed tanks, foam core insulation and more.



Model 298 BH shown in Harvest.



Bunk house of model 298 BH shown.



Kitchen of model 298 BH.

Pictured at top is proof our interiors are more livable. And you get more too: Padded carpeting, oversized sink, extra large countertop and large dinette booth.

The bunk house shown above is ideal for families. This model has the sleeping capacity for 10 people! Take your family and friends on your next outing.

Kitchens come standard with a microwave, oven, double door refrigerator and plenty of storage space. We've thought of everything, so you won't have to.



Model 267 RL shown in Contemporary.

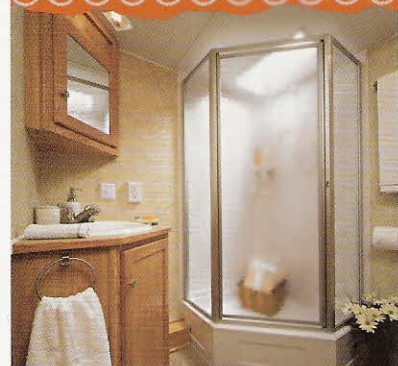
TAKE IT EASY.



Model 279 RB shown in Bahama Breeze.



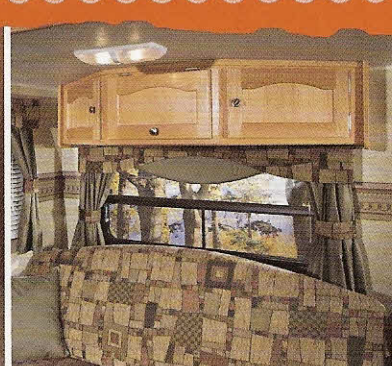
Bedrooms are spacious and comfortable.



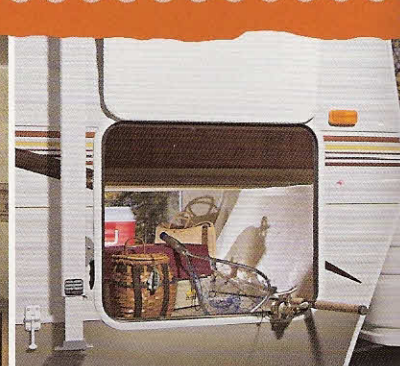
Bathrooms feature tub surround, skylight, power vent and 60 gallons of fresh water with a water heater.



Other brands come with cheap plastic toilets. Sunset Creeks have porcelain foot-flush toilets standard!

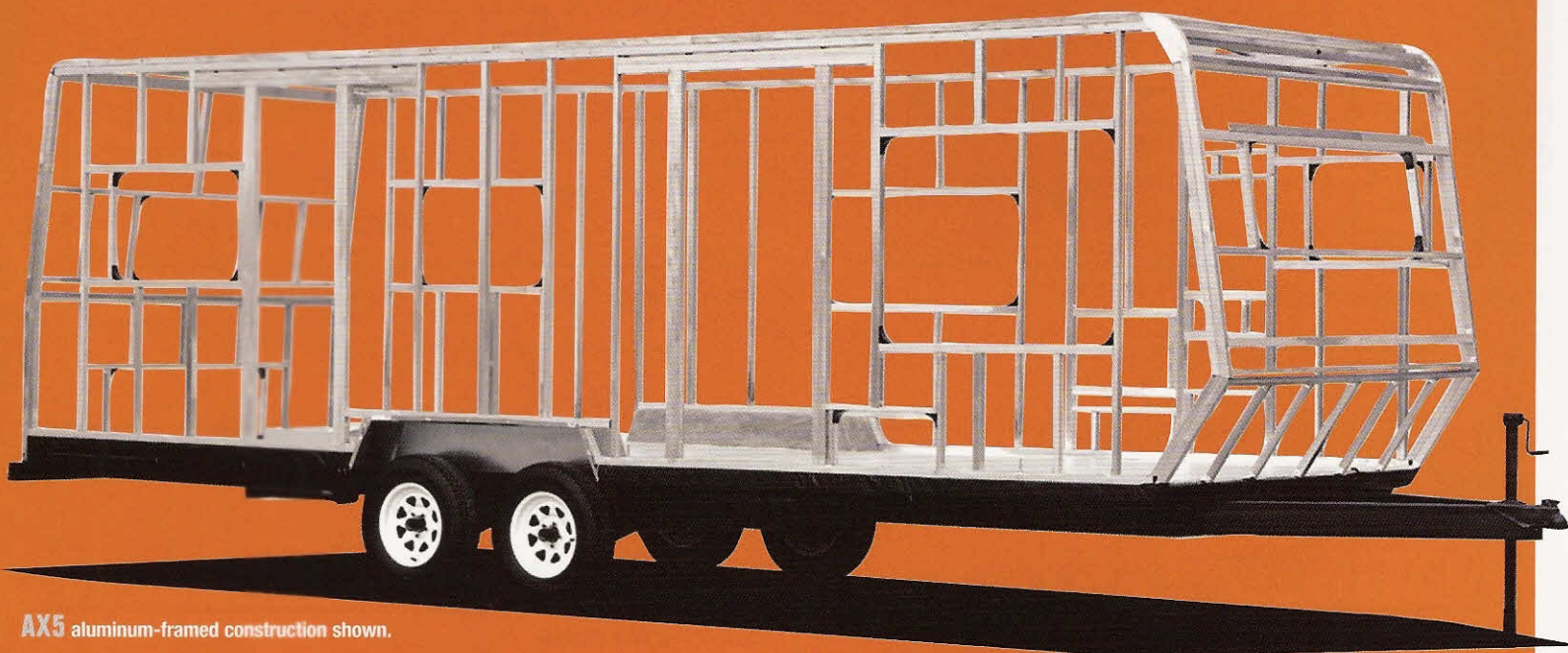


Angled, stylish overhead cabinetry shown. Our cabinets offer Lumber Cor stiles & screwed, not stapled frames.



Extra large, pass-through storage is standard on most floorplans. This finished compartment is lockable.

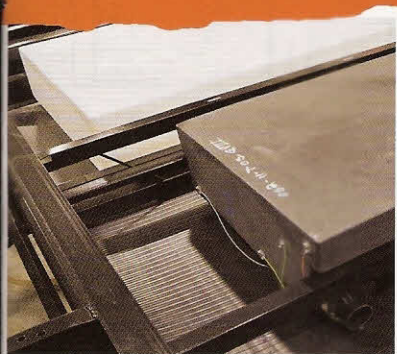
LASTING VALUE? YOU BET!



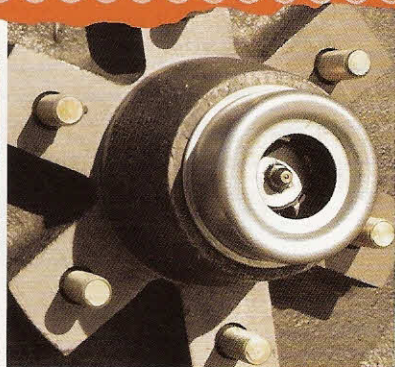
AX5 aluminum-framed construction shown.

We set the standard high. That's why we created and developed the AX5 aluminum-framed construction. This ultra-light structure means a smoother ride, less gas consumption, and a stronger body. By the looks of some other brands, you'll see that they either use minimal aluminum framing or an inexpensive, complete wood structure.

Of course, if you look closer, you'll see they use far less aluminum and structural support. SunnyBrook RV pioneered the aluminum Superstructure over 10 years ago because we care about quality. So if you're looking for the best built trailers in this market, see what's under the surface. Sunset Creek is the leader in value!



Heated and enclosed holding tanks are standard. They're optional or not even offered on some other brands.



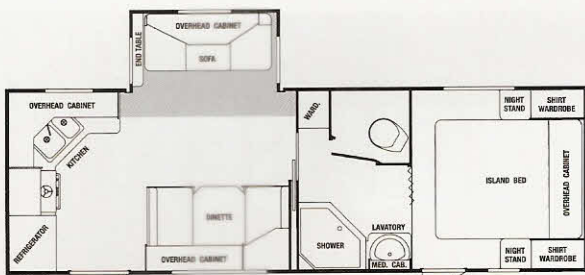
Super lube axles are higher quality than most. They feature lower maintenance and more durability.



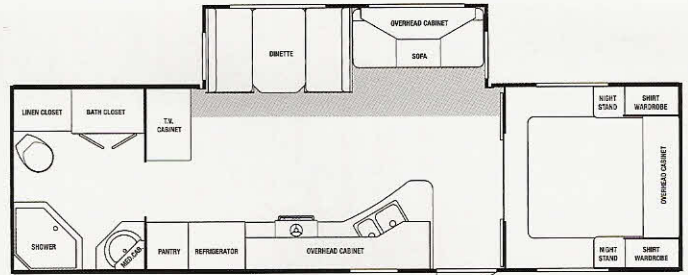
All Sunset Creek cabinetry is screwed together. This provides a stronger product than stapling.



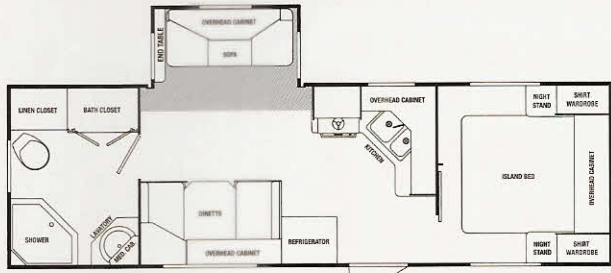
Along with R-7 insulation, we give you, at no extra charge, quality Fome Cor insulation for a cozier trailer.



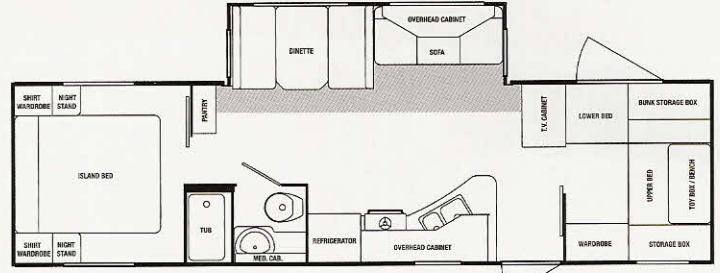
255 RK | TRAVEL TRAILER



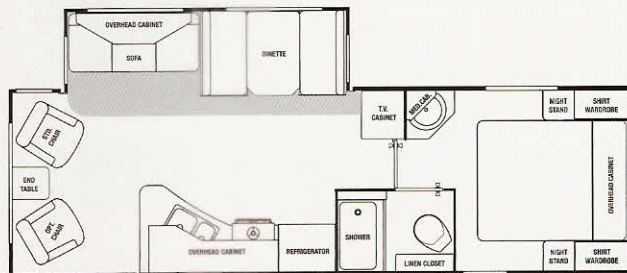
279 RB | TRAVEL TRAILER



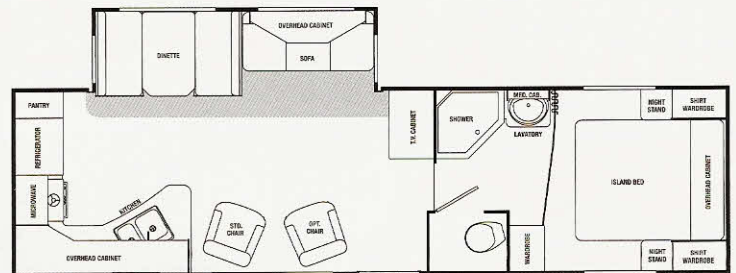
266 RB | TRAVEL TRAILER



296 FB | TRAVEL TRAILER



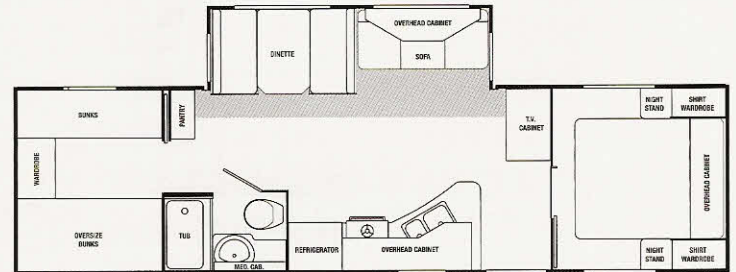
267 RL | TRAVEL TRAILER



297 SL | TRAVEL TRAILER



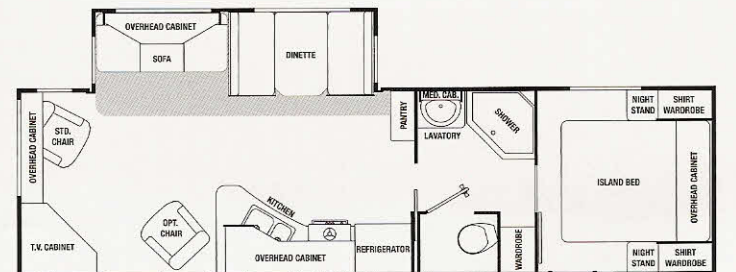
268 FL | TRAVEL TRAILER



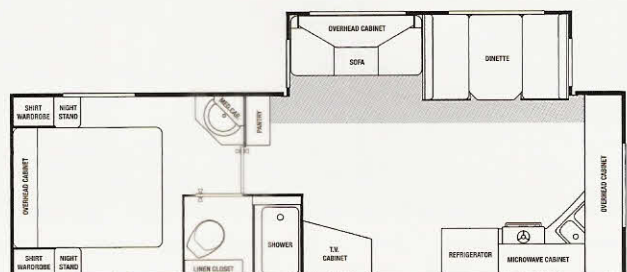
298 RH | TRAVEL TRAILER



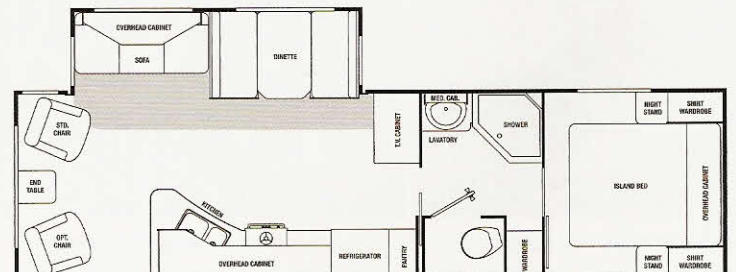
269 RH | TRAVEL TRAILER



299 RE | TRAVEL TRAILER



272 FK | TRAVEL TRAILER



307 RL | TRAVEL TRAILER

SUNSET CREEK STANDARDS & OPTIONS

STANDARD FEATURES

EXTERIOR

- AX5 Aluminum Structure
- Radius Entry Door
- Roof Vent
- Cable TV Hook Up
- Satellite Ready
- TV Antenna with Booster
- Outside Security Light
- 30 lb. LP Bottles
- 30 lb. LP Bottle Cover (Travel Trailers)
- Stabilizer Jacks
- Swing-Out Grab Handle
- Awning
- Walk-On Roof

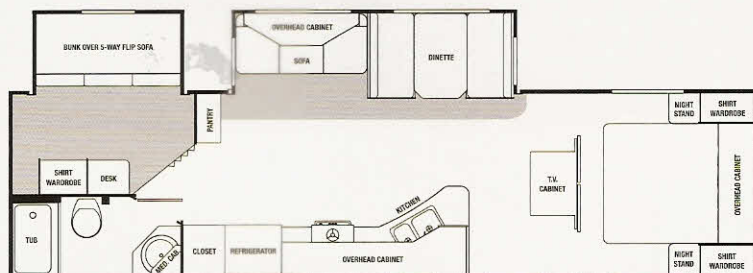
INTERIOR

- Bedspread
- Carbon Monoxide Detector
- Shirt Wardrobe (Two in Travel Trailers)
- Double-Door Refrigerator
- Shower with Tub Surround
- LP Leak Detector
- Mini Blinds
- Valances with Curtains
- Wallpaper Boarder
- Conventional Oven w/Piezo Ignition
- Water Heater By-Pass
- 13.5 Ducted Air Conditioner
- Microwave
- Skylight Over Tub

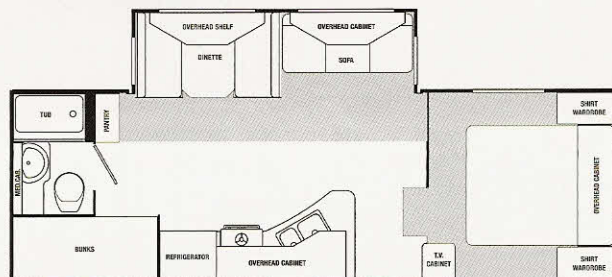
- 6-Gallon DSI Gas/Electric Water Heater
- AM/FM/CD Player

OPTIONAL EQUIPMENT

- Swivel Rocker
- Outside Shower
- Hide A Bed (Most Models)
- 12V Power Front Jacks (FW Only)
- 15.0M BTU A/C (Upgrade)
- Spare Tire, Carrier and Cover
- Range Cover
- Roof Ladder
- Sink Cover
- Tinted Safety Glass
- TV Shelf with Electrical Jack in Bedroom



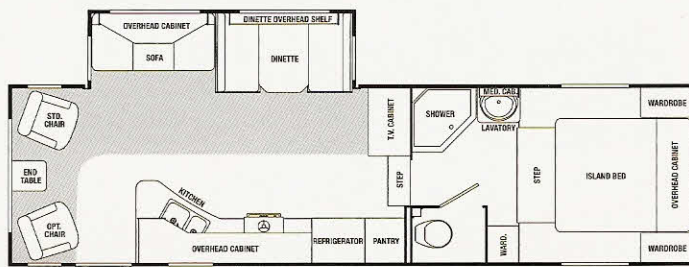
312 BHDS | TRAVEL TRAILER



248 FWH | FIFTH WHEEL



341 SRD | TRAVEL TRAILER



294 FWRL | FIFTH WHEEL

NOW GET OUT THERE.

SUNSET CREEK STANDARDS & OPTIONS

	255 RK	266 RB	267 RL	268 FL	269 BH	272 FK	279 RB	296 FB	297 SL	298 BH	299 RE	307 RL	312 BHDS	341 SRD	248 FWBH	294 FWRL
EXTERIOR LENGTH*	28'- 5"	28'- 5"	29'- 8"	30'- 8"	29'- 8 1/2"	29'- 6"	31'- 10"	33'- 7 1/2"	33'- 8"	33'- 6"	32'- 10"	32'- 10"	34'- 11"	37'- 10"	25'- 11 1/2"	31'- 4"
EXTERIOR HEIGHT**	10'- 8"	10'- 8"	10'- 8"	10'- 8"	10'- 8"	10'- 8"	10'- 8"	10'- 8"	10'- 8"	10'- 8"	10'- 10"	10'- 10"	10'- 10"	10'- 8"	12'- 0"	12'- 0"
EXTERIOR WIDTH	8'- 0"	8'- 0"	8'- 0"	8'- 0"	8'- 0"	8'- 0"	8'- 0"	8'- 0"	8'- 0"	8'- 0"	8'- 0"	8'- 0"	8'- 0"	8'- 0"	8'- 0"	8'- 0"
INTERIOR HEIGHT	6'- 5"	6'- 5"	6'- 5"	6'- 5"	6'- 5"	6'- 5"	6'- 5"	6'- 5"	6'- 5"	6'- 5"	6'- 5"	6'- 5"	6'- 5"	6'- 5"	7'- 5 1/2"	7'- 5 1/2"
DRY HITCH WEIGHT/LBS.***	760	702	756	1017	830	714	875	866	820	902	971	861	931	1080	1435	1249
DRY GROSS WEIGHT/LBS.***	5780	5639	5997	6149	6061	6035	6324	6509	6366	6615	6379	6549	7199	7299	6523	7477
GVWR/LBS.	10000	10000	10000	10000	10000	10000	10000	10000	10000	10000	10000	10000	10000	10000	10000	12700
DUAL 5,200 LBS.	STR Axles	STR Axles	STR Axles	STR Axles	STR Axles	STR Axles	STR Axles	STR Axles	STR Axles	STR Axles	STR Axles	STR Axles	STR Axles	STR Axles	STR Axles	STR Axles
TIRE SIZE	ST225/75D15D	ST225/75D15D	ST225/75D15D	ST225/75D15D	ST225/75D15D	ST225/75D15D	ST225/75D15D	ST225/75D15D	ST225/75D15D	ST225/75D15D	ST225/75D15D	ST225/75D15D	ST225/75D15D	ST225/75D15D	ST225/75D15D	ST225/75D15D
HITCH HEIGHT	21 1/4"	21 1/4"	21 1/2"	21 1/2"	21 1/4"	21 1/4"	21 1/2"	21 1/4"	21 1/4"	21 1/4"	21 1/2"	21 1/2"	21 1/2"	21 1/2"	45"	45"
AWNING SIZE	19'	19'	20'	16'	20'	19'	20'	20'	17'	20'	20'	17'	20'	19'	17'	19'
FURNACE SIZE	25M BTU	25M BTU	30M BTU	30M BTU	30M BTU	30M BTU	30M BTU	30M BTU	30M BTU	30M BTU	30M BTU	30M BTU	35M BTU	34M BTU	25M BTU	35M BTU
DOMETIC GAS/ELEC REFRIG.	Double Door	Double Door	Double Door	Double Door	Double Door	Double Door	Double Door	Double Door	Double Door	Double Door	Double Door	Double Door	Double Door	Double Door	Double Door	Double Door
FRESH WATER CAPACITY/GAL.	56	56	56	56	56	56	56	56	56	56	56	56	56	56	56	56
BLACK WATER CAPACITY/GAL.	41	41	41	41	41	41	41	41	41	41	41	41	41	35	41	35
GRAY WATER CAPACITY/GAL.	76	76	41	41	41	69	41	41	76	41	41	41	76	41	41	70
SLEEPING CAPACITY	6	6	6	6	8	6	6	10	6	10	6	6	9	8	8	6

*Measured from center of king pin to rear bumper. **Includes air conditioner on roof. ***Does not include optional equipment.

LIVE A LITTLE!

www.sunnybrookrv.com

(574) 825-5250

201 14th Street

Middlebury, IN 46540

Printed in the USA

© SunnyBrook RV, Inc

Rev. 07/08

SUNSET CREEK

by SunnyBrook



All illustrations and specifications contained in this literature are based on the latest product information available at the time of printing. SunnyBrook RV, Inc. reserves the right to make changes to colors, materials, specifications and pricing without notice or obligation. Photography may show optional equipment available at an additional cost. Items used as props in photography are not part of the packages. All liquid capacities and weights are approximate and dimensions are nominal. SunnyBrook reserves the right to make changes and improvements without incorporating these changes into similar models produced at an earlier date. Consult your local, authorized Sunset Creek or SunnyBrook dealer for the latest information and changes. SunnyBrook RV, Inc. continues to be a member in good standing of the RVIA.