

GEORGETOWN

BY FOREST RIVER

GT XL WITH OPTIONAL FULL BODY PAINT



ISN'T IT ABOUT TIME?



Stylish, spacious and comfortable surroundings say a lot about how you head down the road. No compromises in your quality of living need to be made in your quest to travel the America you always dreamed of seeing. Georgetown takes you there with all the convenience of home.

Shown right is the incredible 378 with the optional XL package. The 32" LCD HD TV, home theatre and fireplace bring warmth and comfort to your travels.



GEORGETOWN



MODEL 378 WITH XL PACKAGE





MODEL 378 IN CHERRY AND HAZELNUT



MODEL 370 ASH AND CASHMERE



**MODEL 370 BATH
WITH DOUBLE SINKS**

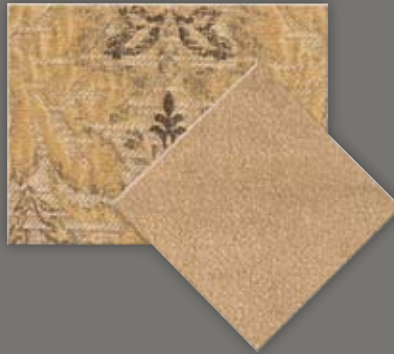
Go ahead. Indulge yourself. This master suite comes complete with two slide-outs, flatscreen TV, abundant storage and a master bath with his and hers medicine cabinets, sinks and linen closets. No wonder the 370 sets the standard for life on the road.

INTERIOR DECOR OPTIONS AVAILABLE ON ALL MODELS

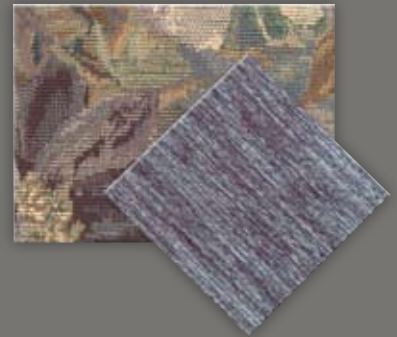
HAZELNUT



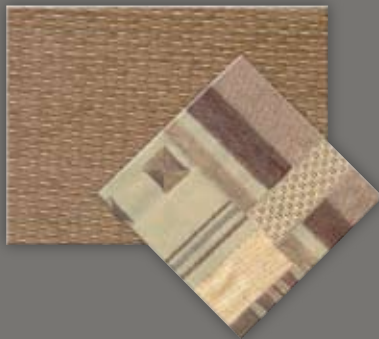
BIRCH



BLUE



CASHMERE

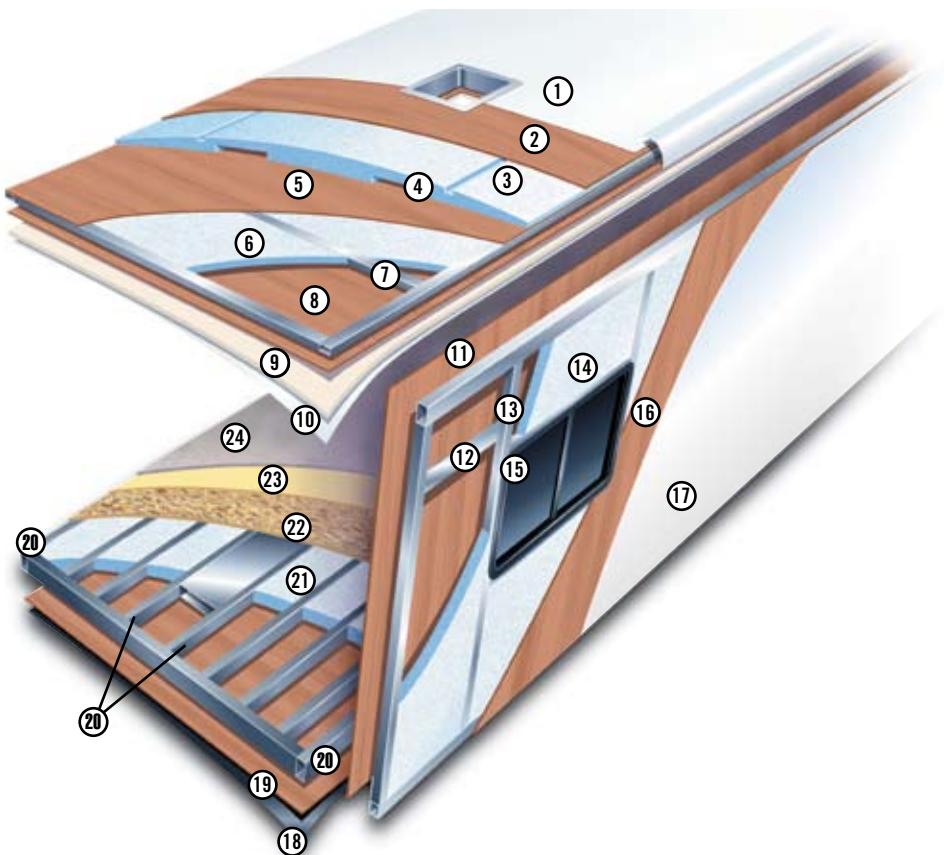


BARLEY



**A. CHERRY
B. ASH**

GEORGETOWN CONSTRUCTION



MULTI-LAYERED LAMINATED ROOF SYSTEM (Total roof thickness 5")

1. Seamless fiberglass roof
2. Luan Decking
3. 3.5" Block foam insulation
4. Dual A/C Ducts
5. Vapor Barrier
6. 1" Block foam insulation
7. Tubular aluminum framing
8. Luan
9. Foam padding
10. Vinyl interior headliner

VACUUM-BOND LAMINATED SIDEWALLS

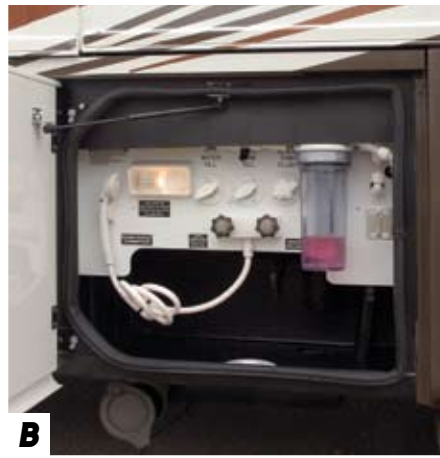
11. Decorative interior wall board
12. Electro-galvanized sheet metal backers
13. Tubular aluminum framing
14. Block foam insulation
15. All sidewall openings framed in aluminum
16. Luan
17. Smooth gelcoat fiberglass exterior (Required option)

VACUUM-BOND LAMINATED FLOOR SYSTEM

18. Fiberglass reinforced vinyl vapor barrier
19. Luan
20. 2.5" Tubular steel floor framing
21. 2.5" Block foam insulation
22. Virtually seamless floor decking
23. Thick padding
24. Durable carpet



A



B



C



D



E



F



G



H

GEORGETOWN SPECIAL FEATURES

A. REAR TRUNK. All standard Georgetown models have an opening rear trunk for all of your miscellaneous travel items and storage for your spare tire.

B. WATER FILTRATION SYSTEM purifies your water for the whole coach. This system is found standard on every Georgetown model.

C. SPRING-BACKED DINETTE CUSHIONS are supremely comfortable. Seats lift up to provide extra storage below.

D. PASS-THROUGH STORAGE compartments are lighted creating expansive storage to take it all with you. Side hinge doors make access easier.

E. CONVENIENCE COMMAND CENTER keeps all the controls managed in one place.

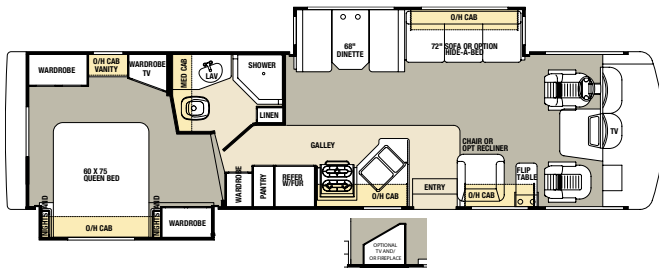
F. CO-PILOT WORK STATION provides a convenient area for your laptop or road map. Now the co-pilot has a place to spread out.

G. UNDER BED STORAGE provides that additional storage space where the competition comes up short.

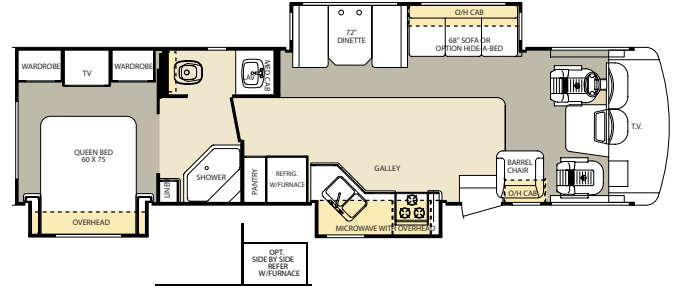
H. FULLY AUTOMATIC LEVELING JACKS are standard on all Georgetown models.

GEORGETOWN FLOORPLANS

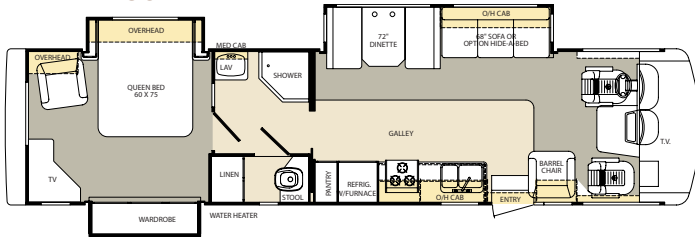
326



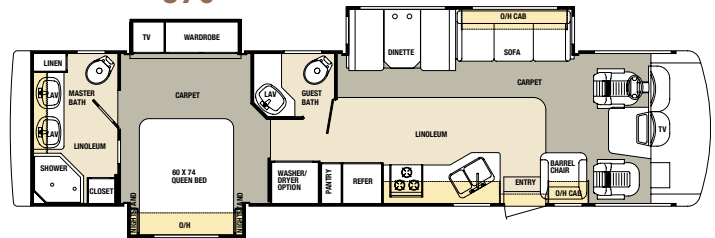
349



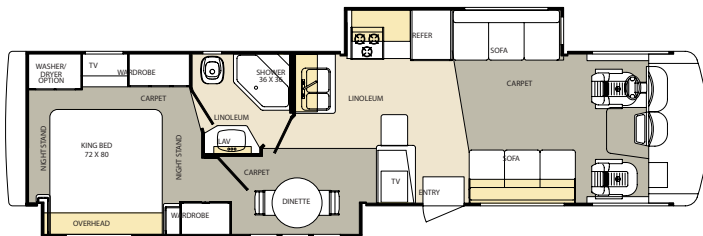
359



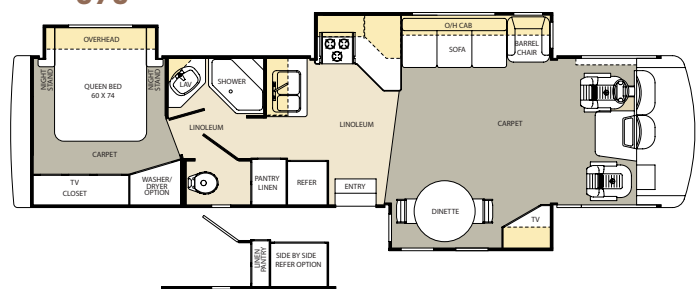
370



373



378



DIMENSIONS & CAPACITIES

	326DS	349TS	359TS	370TS	373DS	378TS
GCWR	26,000	26,000	26,000	26,000	26,000	26,000
GVWR	22,000	22,000	22,000	22,000	22,000	22,000
UVW	17,700	19,000	18,960	19,040	18,960	19,360
CCC	3,115	1,798	1,863	1,445	1,937	1,537
Wheel Base	228"	228"	242"	242"	242"	242"
Fuel Capacity	75	75	75	75	75	75
Tire Size	22.5	22.5	22.5	22.5	22.5	22.5
Interior Height	80"	80"	80"	80"	80"	80"
Interior Width	96"	96"	96"	96"	96"	96"
Overall Height w/ AC	12'5"	12'5"	12'5"	12'5"	12'5"	12'5"
Overall Length	34'6"	35'3"	36'8"	37'3"	37'6"	37'2"
Overall Width	100"	100"	100"	100"	100"	100"
Fresh Water (gal)	80	80	80	80	80	80
Black Water (gal)	41	41	41	41	41	41
Grey Water (gal)	41	41	41	41	41	41
LP Tank (lb.)	105	105	105	105	105	105

PEACE OF MIND.

Forest River has yet another

exclusive feature to offer:

One year of free roadside

assistance will be given to

every Georgetown customer.

This is just one more way

to say "Thank you" and to

ensure an enjoyable

traveling experience.



FULL BODY PAINT



BRONZE EXTERIOR



AQUA EXTERIOR

GEORGETOWN STANDARDS AND OPTIONS

EXTERIOR

- One-piece fiberglass roof
- Gelcoat fiberglass *
- Formed one-piece cargo doors
- Rotocast baggage compartments
- Foam seal undercoating
- Cable T.V. phone jacks (opt.)
- Coach battery – single
- Coach battery – 1 additional (opt.)
- Driver's door (opt.)
- Dual full-sized mirrors
- Entrance door with screen and deadbolt
- Entrance step – electric (exterior package opt.)
- Entry assist handle
- Exterior fiberglass skin
- Hitch 5000 lb. (opt. exterior package)
- Automatic hydraulic leveling jacks - std.
- Ladder with rack - exterior package (opt.)
- Lockable, lighted basement storage with single action slam latches
- Mud flaps (4)
- Outside shower (opt.)
- Painted side-hinge baggage doors (opt.)
- Pantographic intermittent windshield wiper system
- Patio awning
- Patio awning with remote and wind sensor (opt.)
- Patio light
- Remote heated mirrors (opt.)
- Slide-out room awnings – all
- Slider windows with screens (except bedroom)
- TV antenna with booster
- 22.5" tires with Alcoa aluminum rims
- Full body paint option

STRUCTURAL

- Aluminum framed all openings
- Laminated, steel framed floor
- 3" floor with ducted heating
- Insulated, formed one-piece baggage doors
- Laminated alum. framed sidewalls, roof (including all openings)
- Under floor steel truss system
- Rear trunk for spare or storage

DRIVER/PASSENGER AREA

- Soft touch leatherette driver and passenger seats
- Automotive heater/air conditioner with deluxe controls
- Auxiliary start switch
- Defroster fans (2) (opt.)
- Driver/passenger map lights
- Driver/passenger reclining swivel bucket seats
- Optional driver's door w/ electric window
- Optional driver side 6-way power seat
- Front wrap-around privacy curtain with easy slide track and rod
- I.C.C. flash
- Map pocket passenger side
- Fiberglass Molded engine cover
- Radio – single CD AM/FM (Optional 6 CD

- changer)
- Radio power selector switch
- Rear vision camera with monitor *

LIGHTING/DINING/GALLEY

- 3-burner range with 22" oven
- Barrel chair
- High rise deluxe faucet
- Dinette – booth with storage underneath
- Double door – 8 cu. ft. refrigerator/freezer 2-way
- Double door – 8 cu. ft. refrigerator/freezer 2-way with ice maker (opt.)
- Side by side refrigerator with ice maker (opt. some models)
- Flip sofa with arm rests
- Front color 24" flatscreen T.V.
- Laminate kitchen counter with double bowl sink with Corian edge
- Linoleum in kitchen area to entry door
- Microwave – 30" over the range
- Wood raised panel refrigerator insert (opt.)
- Overhead cabinets in slide-outs
- Range cover - accessory package (opt.)
- Rubber step tread
- Satellite prep
- Slide-out pantry
- Stainguard carpet with pad
- Sink cover with cutting board (1)
- Solid Ash or Cherry framed raised panel cabinet doors
- 32" LCD HD TV w/ Home theatre system (opt.)
- Video switch box (opt.)
- Vinyl padded soft touch ceiling
- Window – day/night shades (opt.)
- Window – opaque night shades
- Euro recliner with ottoman
- Soft touch leatherette sofa (opt.)

BATH

- 10 gallon gas/electric water heater with DSI
- ABS shower with surround
- Black water tank flush system (opt.)
- Dual control shower faucet with flex head
- Linoleum in bathroom area
- Medicine cabinet
- Porcelain toilet with foot flush
- Shower skylight
- Toothbrush holder
- Towel bar
- Washer/dryer (opt. models 370, 373, 378)
- Washer dryer prep (opt. models 370, 373, 378)

BEDROOM

- 60" x 75" island queen bed with bedspread, headboard pillow shams and storage below
- 20" flat screen T.V. (std. on all DS models)
- Bedskirts
- Nightstand
- Shirt closet
- Window – day/night shades (opt.)
- King Bed (80" x 72") standard on 373

- Window – opaque night shades

SAFETY

- 110v GFI protected circuit (kitchen, bath, exterior)
- Carbon monoxide detector*
- Exit window
- LPG detector
- Smoke alarm
- Recess mounted fire extinguisher (inside entry door)

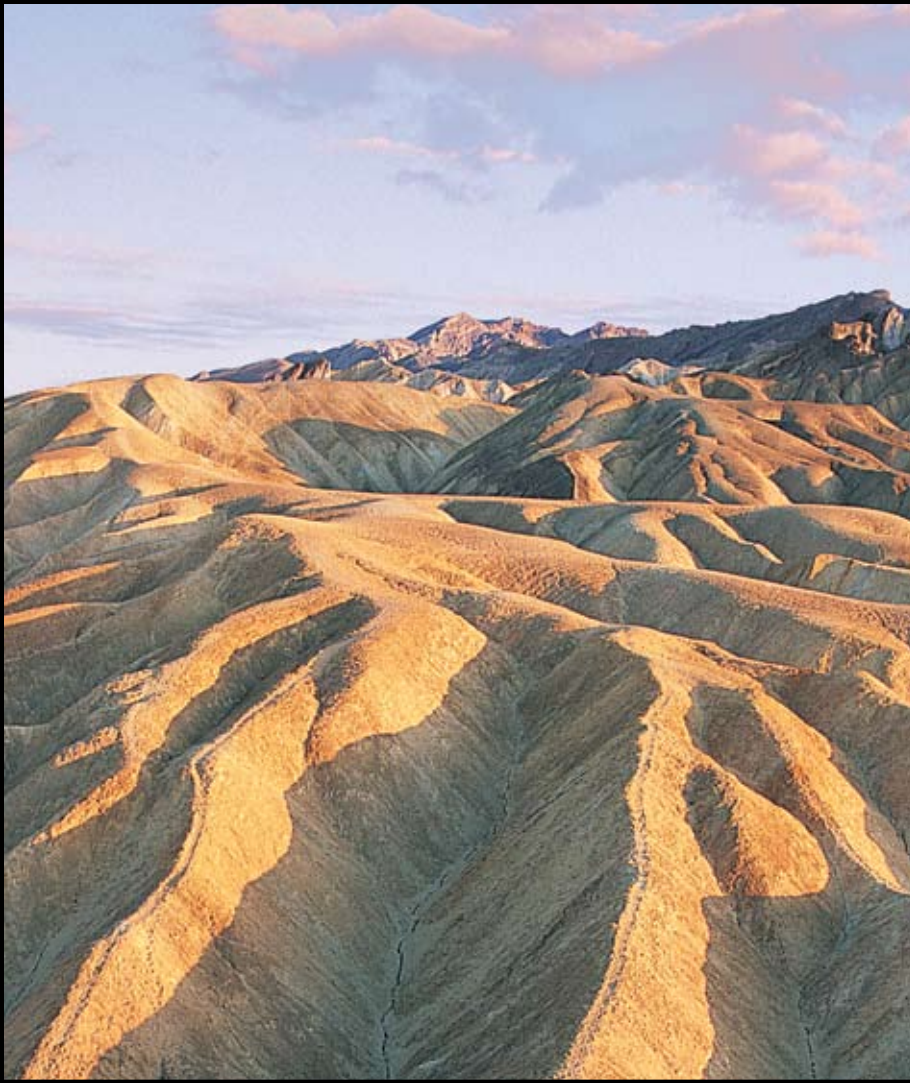
WATER/HEATING/VENTILATION/POWER

- 30 amp 120v distribution panel and cord
- 50 amp 120v distribution panel and cord * with washer dryer (opt.)
- 55 amp 12v power converter
- Artic package*
- Water filter system (1 micron)*
- Ducted in-floor heat 35,000 BTU furnace
- Model 378 two 35,000 BTU furnace
- Electric battery disconnect
- Fantastic roof vent – (opt. kitchen, bath)
- Generator – Onan 5.5 Marquis (opt.)
- Power ceiling fan in bath
- Roof A/C – 13.5 BTU ducted – front (std.)
- Optional bedroom A/C (13.5 BTU)
- Optional low profile A/C
- Roof A/C – 15.0 BTU ducted – IPO standard 13.5 front (opt.)
- Roof A/C – heat strip (opt.)

OPTIONAL XL PACKAGE

- High-gloss gelcoat fiberglass sidewalls
- Thermopane windows
- Solid surface countertops (kitchen)
- Undermount sink with flush solid surface covers
- Deluxe grab handle at entrance door
- Day/night shades
- Exterior paint* - upgrade
- Fluorescent ceiling lights - living room
- Upgrade bath lighting
- Faux marble shower
- Faux marble bath sinks
- Corian surface countertop edging - bathroom, bedroom, dinette
- 32" HD LCD TV and home theatre
- Kitchen faucet w/ pull-out spray
- Dimmer switch for main slide flush halogen reading lamps
- Unique wood entrance - door and trim

* Required option



GEORGETOWN SE



The 2007 model year brings a brand new interior to the SE series. The all-new cockpit features standard soft touch leatherette driver and passenger seats. The easy view camera position makes backing up a breeze. Clean, elegant and functional are central to the new forward control area... life on the road as it was meant to be.

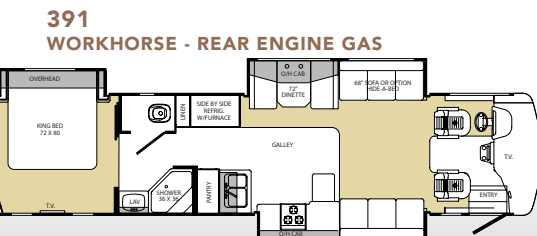
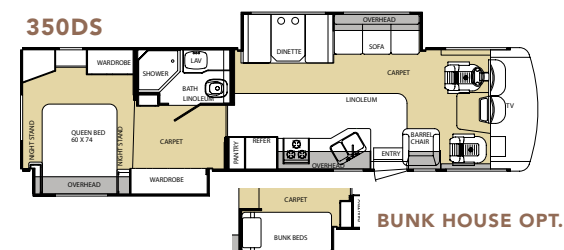
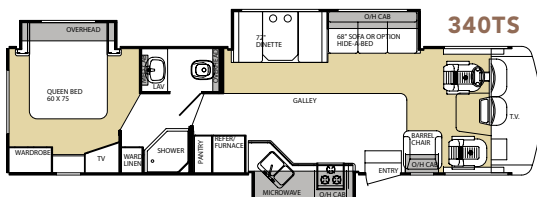
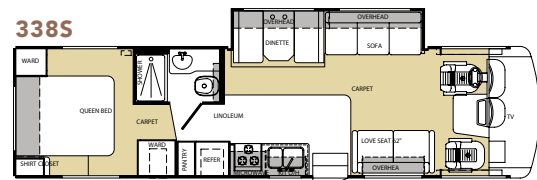
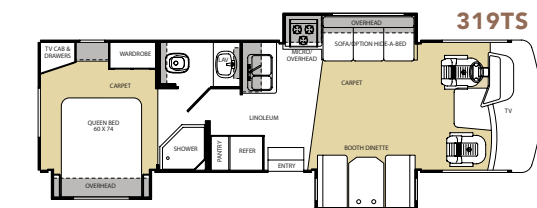
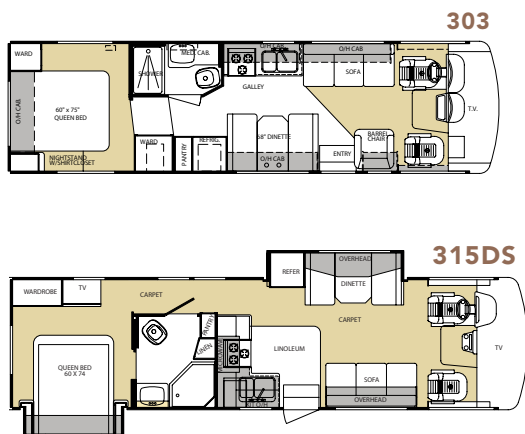


MODEL 340 IN CHERRY AND HAZELNUT



MODEL 340 BEDROOM

GEORGETOWN SE FLOORPLANS



DIMENSIONS & CAPACITIES

	303	315DS	319TS	338S	340TS	350DS	391TS
GCWR	26,000	26,000	26,000	26,000	26,000	26,000	30,000
GVWR	18,000	20,500	20,500	20,500	22,000	22,000	26,000
UVW	14,020	16,520	16,860	15,960	17,500	17,500	21,600
CCC	2,878	2,877	2,538	3,436	3,398	3,340	3,297
Wheel Base	208"	208"	190"	228"	228"	228"	262"
Fuel Capacity	75	75	75	75	75	75	100
Tire Size	19.5	19.5	19.5	19.5	22.5	22.5	22.5
Interior Height	80"	80"	80"	80"	80"	80"	80"
Interior Width	96"	96"	96"	96"	96"	96"	96"
Overall Height w/ AC	12'3"	12'3"	12'3"	12'3"	12'5"	12'5"	12'7"
Overall Length	30'10"	32'10"	31'11"	33'	34'5"	35'6"	39'6"
Overall Width	100"	100"	100"	100"	100"	100"	100"
Fresh Water (gal)	80	80	80	80	80	80	80
Black Water (gal)	41	41	41	41	41	41	41
Grey Water (gal)	41	41	41	41	41	41	41
LP Tank (lb.)	105	105	105	105	105	105	105

32" LCD HD TV WITH HOME THEATRE (OPTIONAL ON ALL SE)



GEORGETOWN SE SPECIFICATIONS

EXTERIOR

- Foam seal undercoating
- Cable TV/phone jacks
- Dual Exterior Mirrors
- Day- Night Shades (opt)
- Entrance step- Electric
- Hitch 5000 lb
- Patio light
- Ladder (opt)
- Exterior Paint Package (opt)
- Hydraulic auto leveling jacks (n/a-303)
- Pleated Night Shades Throughout (std.)
- Stainless steel wheel liners (required opt. models 303, 338, 319, 315)
- 22-1/2" Alcoa wheels (models 340, 350)
- Patio awning
- Picnic Table (338S, 303)
- Rear bedroom window (opt)
- Slide-out room awning (s)
- Thermo Pane Windows (opt)
- TV antenna w/booster
- Mud flaps (2)

STRUCTURAL

- 3" Laminated steel framed floor
- Laminated alum. framed sidewalls, roof (includes all openings)
- Under floor steel truss system

BEDROOM

- 60"x 75" island queen bed
- Nightstands

- Flat screen- 20" color TV (opt) N/A on 303, 338
- Bedspreads, pillow shams (opt)
- King Bed (80" x 72") standard on 373

BATH

- 6 gallon gas water heater w/DSI
- ABS shower w/surround
- Shower skylight

SAFETY

- 110v GFI protected circuit (kitchen, bath, exterior)
- Carbon monoxide detector (mandatory/opt)
- Exit window
- LPG detector
- Smoke alarm

DRIVER/PASSENGER AREA

- Automotive heater/air conditioner w/ deluxe controls
- Auxiliary start switch
- Driver/passenger map lights
- Driver/passenger reclining, swivel fabric bucket seats
- Front wraparound privacy curtain w/easy slide track and rod
- I.C.C. flash
- Big button radio- AM/FM CD (std.)
- Radio power selector switch
- Rear vision camera w/monitor and sound (opt.)
- Soft touch leatherette driver and passenger seats

LIVING/DINING/GALLERY

- 3-burner range w/oven
- Double door refrigerator
- Flat screen- front color 24" TV
- Hide a Bed Sofa (NA 303)
- Laminate kitchen counter top
- Linoleum in kitchen area to entry door
- Linoleum in place of carpet (opt)
- Microwave
- Overhead cabinets in slide outs
- Solid wood raised panel cabinet doors
- Video Switch Box (opt)
- Euro recliner with ottoman (opt.)
- Soft touch leatherette sofa (opt.)
- 32" HD LCD TV and home theatre (opt.)

WATER/HEATING/ VENTILATION/POWER

- 30 amp 120v distribution panel and cord
- 50 amp 120v distribution panel and cord (opt)
- 55 amp 12v power converter
- Full Coach Water Filtration System (1 Micron)
- Ducted in-floor heat 35000 btu furnace
- Electronic battery disconnect
- Generator- Onan 4.0 Microlite (std)
- Generator- Onan 5.5 Marquis & 50 amp (opt.)
- Power ceiling vent in bath
- Roof A/C- 13.5 Brisk Air ducted- Front (std.)

* Required option

GEORGETOWN SE EXTERIORS



SE EXTERIOR

LTD PACKAGE

(REQUIRED OPTION EXCEPT MODEL 303)

- 6.5 Generator
- A&E Electric awning (Weatherpro series w/ remote & windsensor)
- Rear Vision system
- Exterior paint
- Fiberglass roof
- Gelcoat fiberglass
- Deluxe grab handle
- Corian countertop edging (kitchen)
- Raised panel refrigerator door

GEORGETOWN

BY FOREST RIVER

SE



Forest River, Inc. 58277 S.R. 19 South Elkhart IN, 46517 Phone: 574.296.7700

Fax: 574.295.8749 www.forestriverinc.com www.forestriveraccessories.com

COMPLIMENTS OF

All illustrations and specifications contained in this literature are based on the latest product information at time of publication. Forest River reserves the right to make changes in prices, colors, materials, equipment and specifications at anytime without notice and assumes no responsibility for any error in this literature. All units are shipped F.O.B. Goshen, Indiana. Litho U.S.A. Rev 11/05

CONSULT YOUR LOCAL DEALER FOR WARRANTY INFORMATION. PHOTOS MAY DEPICT OPTIONAL FEATURES. LITHO: U.S.A. FOR 0513