

GEORGETOWN

THE ADVENTURE BEGINS
BY FOREST RIVER



YOUR SECOND HOME ON THE ROAD.



MODEL 349XL: BIRCH

Stylish, spacious and comfortable surroundings say a lot about how you head down the road. No compromises in your quality of living need to be made in your quest to travel the America you always dreamed of seeing. Georgetown takes you there with all the convenience of home.

ROYAL COMFORTS.

At the day's end, you will appreciate our spacious and comfortable bedroom suites. Dual purpose lamps are stylish and swivel for ease of reading. 110 volt plugs are conveniently located at each night stand. All Georgetown bedrooms have a 20" flat screen TV to make viewing easy. Lift up the bed and what do you find? More storage! Compare and you will find all Georgetown models have tremendous amounts of drawers and closet space.



JUST LIKE HOME.

The model 370 features his and hers sinks, medicine cabinets and linen closets. The faux marble offered with the XL package enhances the feeling of true luxury.

PRACTICAL BEAUTY.



The center of the home is the kitchen. The centerpiece of the Georgetown is the kitchen. The raised panel wood doors, drawers and solid surface countertops (XL option) bring the amenities of home on the road. The countertop extension to the left raises and adds counter space when you need it and conveniently lowers when finished.



READY FOR TAKE-OFF.

Comfort, convenience and safety are the trademarks of our cockpit. Our cockpit hosts an enormous windshield, full auto leveling jacks, remote generator start switch and large rear vision monitor (optional) making the Georgetown model a pure joy to drive.

UNDER SINK STORAGE.

We supply the space you need to take all of your favorite goodies with you. All Georgetown models have slide-out pantries next to the refrigerator for more convenient storage.



TRASH IS BETTER LEFT UNSEEN.

Trash is a common reality each motorhome user lives with but few design kitchens with trash receptacles in mind. Georgetown not only dedicated space for the trash but designed a secure compartment so it does not topple while traveling.



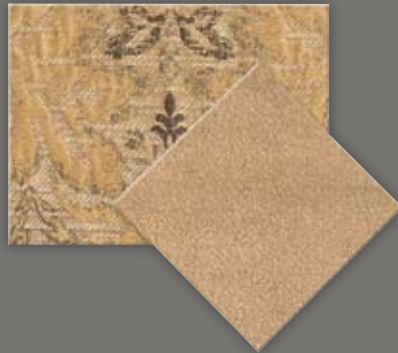
MODEL 349 ONLY

INTERIOR DECOR OPTIONS

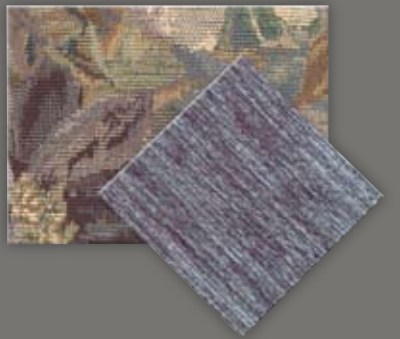
HAZELNUT



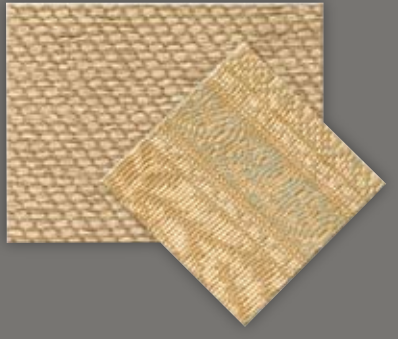
BIRCH



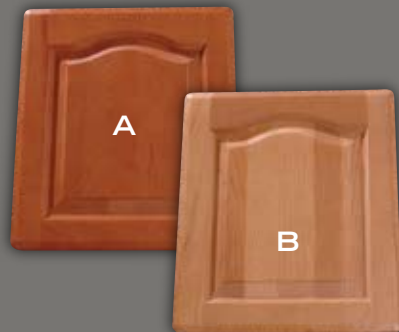
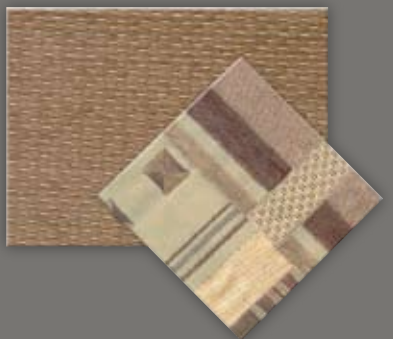
BLUE



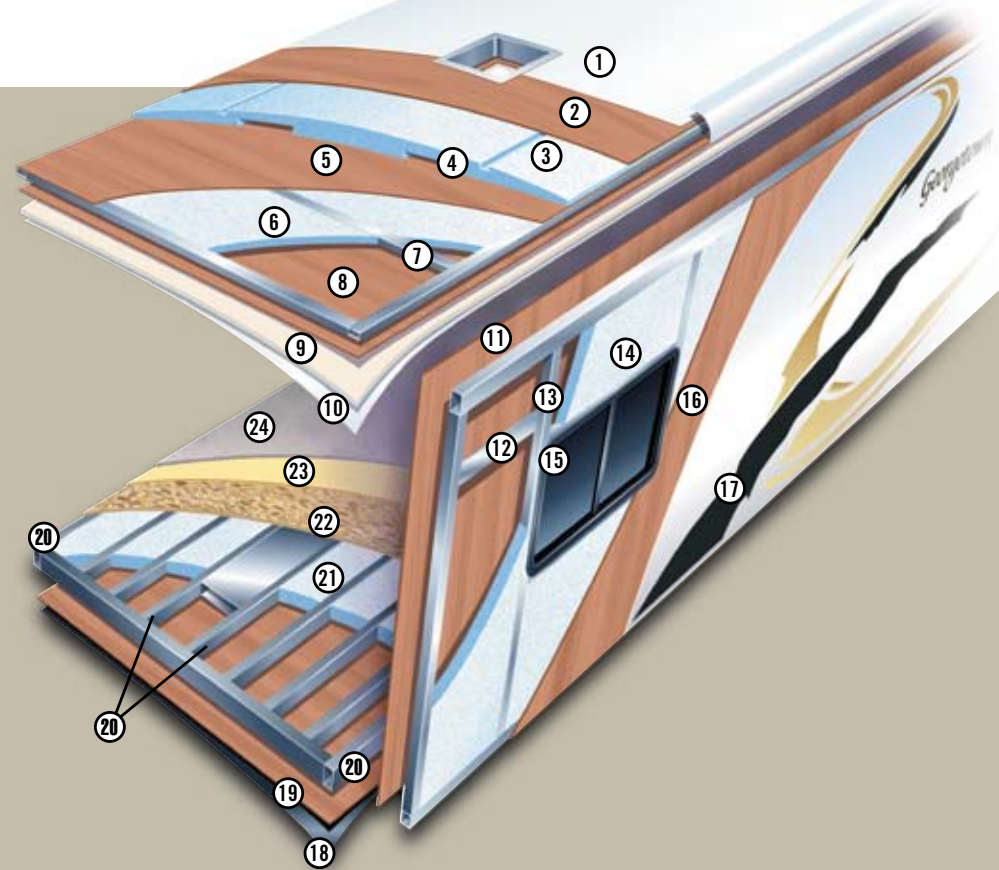
BARLEY



CASHMERE



A. CHERRY B. ASH



MULTI-LAYERED LAMINATED ROOF SYSTEM

(Total roof thickness 5")

1. Seamless fiberglass roof
2. Luan Decking
3. 3.5" Block foam insulation
4. Dual A/C Ducts
5. Vapor Barrier
6. 1" Block foam insulation
7. Tubular aluminum framing
8. Luan
9. Foam padding
10. Vinyl interior headliner

VACUUM-BOND LAMINATED SIDEWALLS

11. Decorative interior wall board
12. Electro-galvanized sheet metal backers
13. Tubular aluminum framing
14. Block foam insulation
15. All sidewall openings framed in aluminum
16. Luan
17. Smooth fiberglass exterior

VACUUM-BOND LAMINATED FLOOR SYSTEM

18. Fiberglass reinforced vinyl vapor barrier
19. Luan
20. 2.5" Tubular steel floor framing
21. 2.5" Block foam insulation
22. Virtually seamless floor decking
23. Thick padding
24. Durable carpet

CONSTRUCTION

THE ADVENTURE BEGINS. GEORGETOWN.



A



B



C



D



E



F



G



H

SPECIAL FEATURES

A. REAR TRUNK. All standard Georgetown models have an opening rear trunk for all of your miscellaneous travel items and storage for your spare tire. 22.5" spares are optional.

B. WATER FILTRATION SYSTEM purifies your water for the whole coach. This system is found standard on every Georgetown model.

C. SPRING-BACKED DINETTE CUSHIONS are supremely comfortable. Seats lift up to provide extra storage below.

D. CO-PILOT WORK STATION provides a convenient area for your laptop or road map. Now the co-pilot has a place to spread out.

E. PASS-THROUGH STORAGE compartments are lighted creating expansive storage to take it all with you.

F. CONVENIENCE COMMAND CENTER keeps all the controls managed in one place.

G. UNDER BED STORAGE provides that additional storage space where the competition comes up short.

H. FULLY AUTOMATIC LEVELING JACKS are standard on all Georgetown models.



XL PAINT PACKAGE IN CHAMPAGNE.

GEORGETOWN STANDARDS & OPTIONS

EXTERIOR

- One-piece fiberglass roof
- Formed one-piece cargo doors
- Rotocast baggage compartments
- Foam seal undercoating
- Cable T.V. phone jacks (opt.)
- Coach battery – single
- Coach battery – 1 additional (opt.)
- Driver's door (opt.)
- Dual full-sized mirrors
- Entrance door with screen and deadbolt
- Entrance step – electric (exterior package opt.)
- Entry assist handle
- Exterior Filon® fiberglass skin (Gelcoat with XL Package)
- Hitch 5000 lb. (opt. exterior package)
- Automatic hydraulic leveling jacks - std.
- Ladder with rack - exterior package (opt.)
- Lockable, lighted basement storage with single action slam latches
- Mud flaps (4)
- Outside shower (opt.)
- Painted baggage doors (opt.)
- Pantographic intermittent windshield wiper system
- Patio awning
- Patio awning with remote and wind sensor (opt.)
- Patio light
- Remote heated mirrors (opt.)
- Slide-out room awnings – all
- Slider windows with screens (except bedroom)
- Spare tire (opt.)
- TV antenna with booster
- 22.5" tires with Alcoa aluminum rims

STRUCTURAL

- Aluminum framed all openings
- Laminated, steel framed floor
- 3" floor with ducted heating
- Insulated, formed one-piece baggage doors
- Laminated alum. framed sidewalls, roof (including all openings)
- Under floor steel truss system
- Rear trunk for spare or storage

DRIVER / PASSENGER AREA

- Automotive heater/air conditioner with deluxe controls
- Auxiliary start switch
- Defroster fans (2) (opt.)
- Driver/passenger map lights
- Driver/passenger reclining swivel bucket seats
- Optional driver's door w/ electric window
- Optional driver side 6-way power seat
- Front wrap-around privacy curtain with easy slide track and rod
- I.C.C. flash
- Map pocket passenger side - accessory package (opt.)
- Fiberglass Molded engine cover
- Radio – single CD AM/FM (Optional 6 CD changer)
- Radio power selector switch
- Rear vision camera with monitor (opt.)

LIGHTING / DINING / GALLEY

- 3-burner range with 22" oven
- Barrel chair
- Countertop extension
- High rise deluxe faucet
- Dinette – booth with storage underneath
- Double door – 8 cu. ft. refrigerator/freezer 2-way
- Double door – 8 cu. ft. refrigerator/freezer 2-way with ice maker (opt.)
- Side by side refrigerator with ice maker (opt. some models)
- Flip sofa with arm rests
- Front color 27" flatscreen T.V.
- Laminate kitchen counter with double bowl sink
- Linoleum in kitchen area to entry door
- Microwave – 30" over the range
- Wood raised panel refrigerator insert (opt.)
- Overhead cabinets in slide-outs
- Range cover - accessory package (opt.)
- Rubber step tread
- Satellite prep
- Slide-out pantry
- Stainguard carpet with pad
- Sink cover with cutting board (1)

- Solid Ash or Cherry framed raised panel cabinet doors
- Spice rack - accessory package (opt.)
- Home theatre system (opt.)
- Video switch box (opt.)
- Vinyl padded soft touch ceiling
- Window – day/night shades (opt.)
- Window – opaque night shades

BATH

- 10 gallon gas/electric water heater with DSI
- ABS shower with surround (1 piece FBGL model 342 with tub)
- Black water tank flush system (opt.)
- Dual control shower faucet with flex head
- Linoleum in bathroom area
- Medicine cabinet
- Porcelain toilet with foot flush
- Shower skylight
- Toothbrush holder
- Towel bar
- Washer/dryer (optional models 370, 375, 378)
- Washer dryer prep (optional models 370, 375, 378)

BEDROOM

- 60" x 75" island queen bed with bedspread, headboard pillow shams and storage below
- 20" flat screen T.V. (std. on all DS models)
- Bedskirts
- Nightstand
- Shirt closet
- Windows – 4 tier jalousie window
- Window – day/night shades (opt.)
- Window – opaque night shades

SAFETY

- 110v GFI protected circuit (kitchen, bath, exterior)
- Carbon monoxide detector*
- Exit window
- LPG detector
- Smoke alarm
- Recess mounted fire extinguisher (inside entry door)

WATER / HEATING / VENTILATION / POWER

- 30 amp 120v distribution panel and cord
- 50 amp 120v distribution panel and cord - forced with washer dryer (opt.)
- 55 amp 12v power converter
- Artic package*
- Water filter system (1 micron)*
- Ducted in-floor heat 35,000 BTU furnace
- Electric battery disconnect
- Fantastic roof vent – (opt. kitchen, bath, bedroom)
- Generator – Onan 4.0 Microlite (opt.)
- Generator – Onan 5.5 Marquis (opt.)
- Power ceiling fan in bath
- Roof A/C – 13.5 BTU ducted – front (std.)
- Optional bedroom A/C (11.0 or 13.5 BTU)
- Optional low profile A/C
- Roof A/C – 15.0 BTU ducted – IPO standard 13.5 front (opt.)
- Roof A/C – heat strip (opt.)

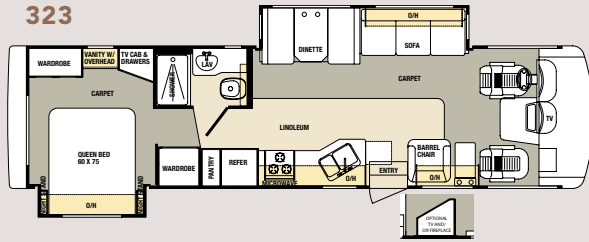
OPTIONAL XL PACKAGE

- High-gloss gelcoat fiberglass sidewalls
- Thermopane windows
- Solid surface countertops (kitchen)
- Undermount sink with flush solid surface covers
- Deluxe grab handle at entrance door
- Day/night shades
- UltraLeather driver/passenger seats
- Exterior paint* - upgrade
- Sculpted carpet
- Fluorescent ceiling lights - living room
- Upgrade bath lighting
- Faux marble shower
- Faux marble bath sinks
- Solid surface countertop edging

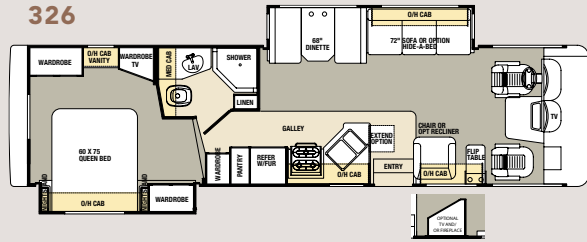
* Forced option

FLOORPLANS & SPECIFICATIONS

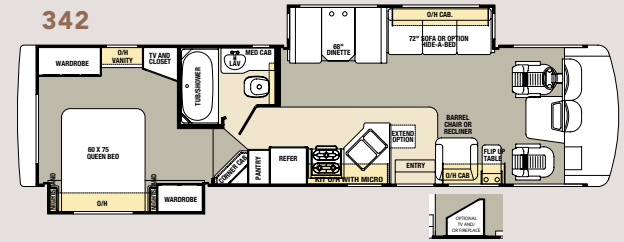
323



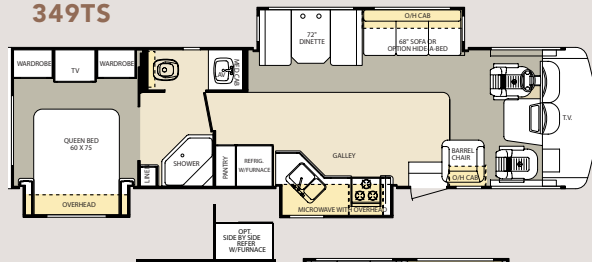
326



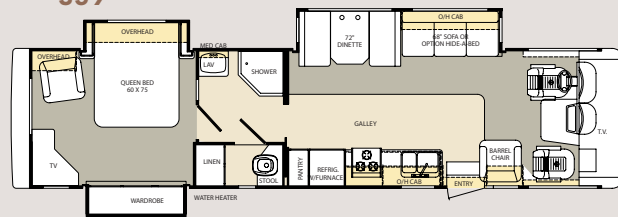
342



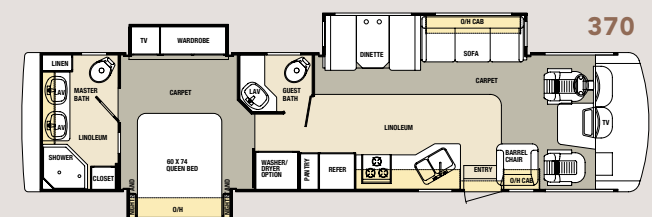
349TS



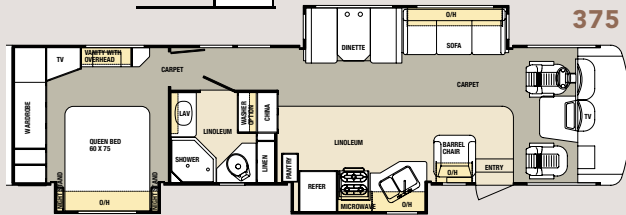
359



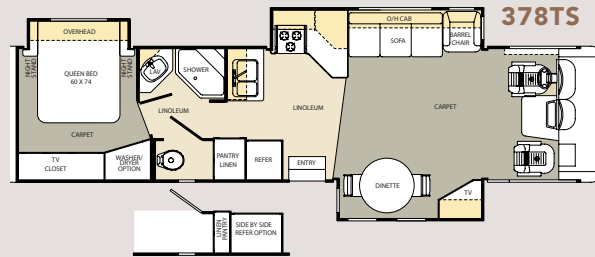
370



375



378TS

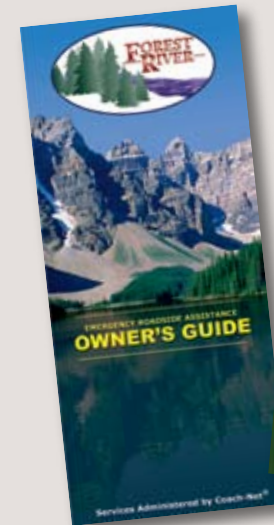


DIMENSIONS & CAPACITIES

	323DS	326DS	342DS	349TS	359TS	370TS	375TS	378TS
GCWR	26,000	26,000	26,000	26,000	26,000	26,000	26,000	26,000
GVWR	22,000	22,000	22,000	22,000	22,000	22,000	22,000	22,000
UVW	17,530	17,700	17,900	19,100	18,960	19,040	19,700	19,360
CCC	3,285	3,115	2,915	1,798	1,863	1,445	1,114	1,537
Wheel Base	228"	218"	228"	228"	228"	242"	242"	242"
Fuel Capacity	75	75	75	75	75	75	75	75
Tire Size	22.5	22.5	22.5	22.5	22.5	22.5	22.5	22.5
Interior Height	80"	80"	80"	80"	80"	80"	80"	80"
Interior Width	96"	96"	96"	96"	96"	96"	96"	96"
Overall Height w/ AC	12'5"	12'5"	12'5"	12'5"	12'5"	12'5"	12'5"	12'5"
Overall Length	33'11"	34'6"	35'2"	35'3"	36'8"	37'3"	37'8"	37'2"
Overall Width	100"	100"	100"	100"	100"	100"	100"	100"
Fresh Water (gal)	80	80	80	80	80	80	80	80
Black Water (gal)	41	41	41	41	41	82	41	41
Grey Water (gal)	41	41	41	41	41	82	41	41
LP Tank (lb.)	105	105	105	105	105	105	105	105

PEACE OF MIND.

Forest River has yet another exclusive feature to offer: One year of free roadside assistance will be given to every Georgetown customer. This is just one more way to say "Thank you" and to ensure an enjoyable traveling experience.



GEORGETOWN SPECIAL EDITION THE AFFORDABLE ALTERNATIVE.



MODEL 340TS SE: BIRCH.

Georgetown construction features abound throughout the SE, making it a robust and lasting value. Even if the SE is your first motorhome, it is built to be a faithful companion for years to come. Unique features usually only found in more expensive coaches, like full-unit water filtration, basement storage, and a designer lighting package speak of our ongoing commitment to our customers. Don't make sacrifices to get on the road... start with the best! The Special Edition Georgetown by Forest River!



SE SHOWN WITH OPTIONAL BOTTOM PAINT.

DIMENSIONS & CAPACITIES

	303 SE	319TS SE	338S SE	340TS SE	350DS SE
GCWR	26,000	26,000	26,000	26,000	26,000
GVWR	18,000	20,500	20,500	22,000	22,000
UVW	14,020	16,860	15,960	17,500	17,500
CCC	2,878	2,538	3,436	3,398	3,348
Wheel Base	208"	190"	228"	228"	228"
Fuel Capacity	75	75	75	75	75
Tire Size	19.5	19.5	19.5	22.5	22.5
Interior Height	80"	80"	80"	80"	80"
Interior Width	96"	96"	96"	96"	96"
Overall Height w/ AC	12'3"	12'3"	12'3"	12'5"	12'5"
Overall Length	30'10"	31'11"	33'	34'5"	35'6"
Overall Width	100"	100"	100"	100"	100"
Fresh Water (gal)	80	80	80	80	80
Black Water (gal)	41	41	41	41	41
Grey Water (gal)	41	41	41	41	41
LP Tank (lb.)	105	105	105	105	105

SPECIFICATIONS

EXTERIOR

- Foam seal undercoating
- Cable TV/phone jacks
- Dual Exterior Mirrors
- Day- Night Shades (opt)
- Entrance step- Electric
- Hitch 5000 lb
- Patio light
- Ladder (opt)
- Exterior Paint Package (opt)
- Hydraulic auto leveling jacks (n/a-303)
- Pleated Night Shades Throughout (std.)
- Stainless steel wheel liners (mandatory opt. models 303, 338, 319)
- 22-1/2" Alcoa wheels (models 340, 350)
- Patio awning
- Picnic Table (338S, 303)
- Rear bedroom window (opt)
- Slide-out room awning (s)
- Spare tire (opt. 338, 303)
- Thermo Pane Windows (opt)
- TV antenna w/booster
- Mud flaps (2)

STRUCTURAL

- 3" Laminated steel framed floor
- Laminated alum. framed sidewalls, roof (includes all openings)
- Under floor steel truss system

BEDROOM

- 60"x 75" island queen bed
- Nightstands
- Flat screen- 20" color TV (opt)
- Bedspreads, pillow shams (opt)

BATH

- 6 gallon gas water heater w/DSI
- ABS shower w/surround
- Shower skylight

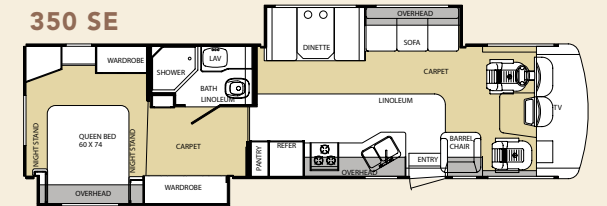
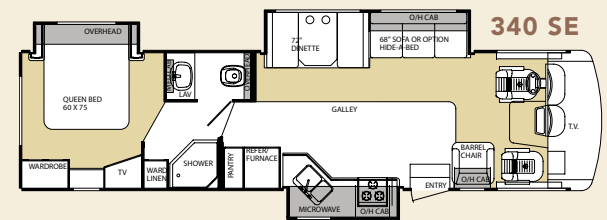
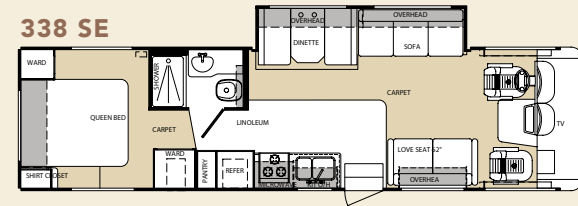
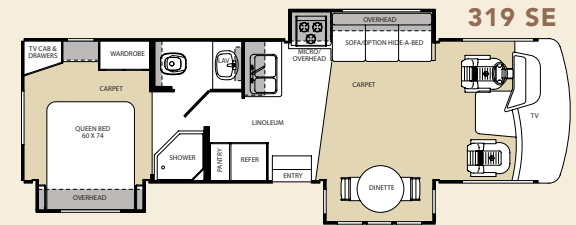
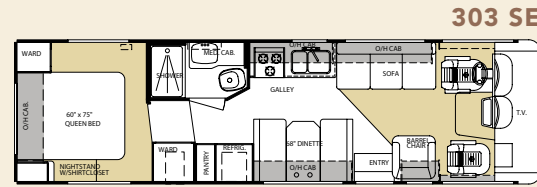
SAFETY

- 110v GFI protected circuit (kitchen, bath, exterior)
- Carbon monoxide detector (mandatory/opt)
- Exit window
- LPG detector
- Smoke alarm

DRIVER/PASSENGER AREA

- Automotive heater/air conditioner w/ deluxe controls
- Auxiliary start switch
- Driver/passenger map lights
- Driver/passenger reclining, swivel fabric bucket seats
- Front wraparound privacy curtain w/easy slide track and rod
- I.C.C. flash
- Radio- AM/FM CD (std.)
- Radio power selector switch
- Rear vision camera w/monitor (opt.)

FLOORPLANS



LIVING/DINING/GALLERY

- 3-burner range w/oven
- Double door refrigerator
- Flat screen- front color 20" TV
- Hide a Bed Sofa (NA 303)
- Laminate kitchen counter top
- Linoleum in kitchen area to entry door
- Linoleum in place of carpet (opt)
- Microwave
- Overhead cabinets in slide outs
- Solid wood raised panel cabinet doors
- Video Switch Box (opt)

WATER/HEATING/VENTILATION/POWER

- 30 amp 120v distribution panel and cord
- 50 amp 120v distribution panel and cord (opt)
- 55 amp 12v power converter
- Full Coach Water Filtration System (1 Micron)
- Ducted in-floor heat 35000 btu furnace
- Electronic battery disconnect
- Generator- Onan 4.0 Microlite (std)
- Generator- Onan 5.5 Marquis & 50 amp (opt.)
- Power ceiling vent in bath
- Roof A/C- 13.5 Brisk Air ducted- Front (std.)
- Optional Rear A/C (11.0)



SAY GOOD-BYE TO YOUR PAST AND HELLO TO YOUR FUTURE.



Forest River, Inc. 58277 S.R. 19 South Elkhart IN, 46517 Phone: 574.296.7700

Fax: 574.295.8749 www.forestriverinc.com www.forestriveraccessories.com

All illustrations and specifications contained in this literature are based on the latest product information at time of publication. Forest River reserves the right to make changes in prices, colors, materials, equipment and specifications at anytime without notice and assumes no responsibility for any error in this literature. All units are shipped F.O.B. Goshen, Indiana. Litho U.S.A. Rev 11/05

CONSULT YOUR LOCAL DEALER FOR WARRANTY INFORMATION. PHOTOS MAY DEPICT OPTIONAL FEATURES.

COMPLIMENTS OF