



SURVEYOR BY FOREST RIVER
True, Super Lightweight Travel Trailers



***Strong, Durable Laminated Fiberglass
with All Aluminum Cage Construction***



Model SV-233T with Cabernet Decor

Lightweight Travel Trailers have grown very popular in recent years for one reason ... they simply make sense. No longer is it necessary to invest in a gas-guzzling tow vehicle to enjoy a retreat! In fact, many of the minivans, SUVs and small V-8s you drive everyday will easily tow a Surveyor! Surveyor utilizes construction techniques that greatly reduce weight while providing incredible durability and strength.

Developed Specifically for Mini-Vans, SUVs, and Light Duty Pick-Up Trucks.

In addition, aerodynamics, low centers of gravity and independent torsion ride suspension ensures superior towing and tracking. It all adds up to an enjoyable, carefree adventure. We know you have choices but with careful study, you will find Surveyor the lightweight of choice. Why tow a heavier trailer?

Thanks,
The Surveyor Group

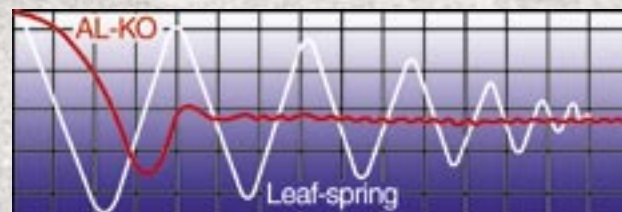


Radius bunk ends with 1,000 lb. capacity are standard on our expandable models. The radius corners are stronger, while large drip rails and automotive rubber seals help prevent moisture penetration. Boltaflex™ weathershield tents with a 5 Year warranty offer double flap seals and stain-resistant interiors.

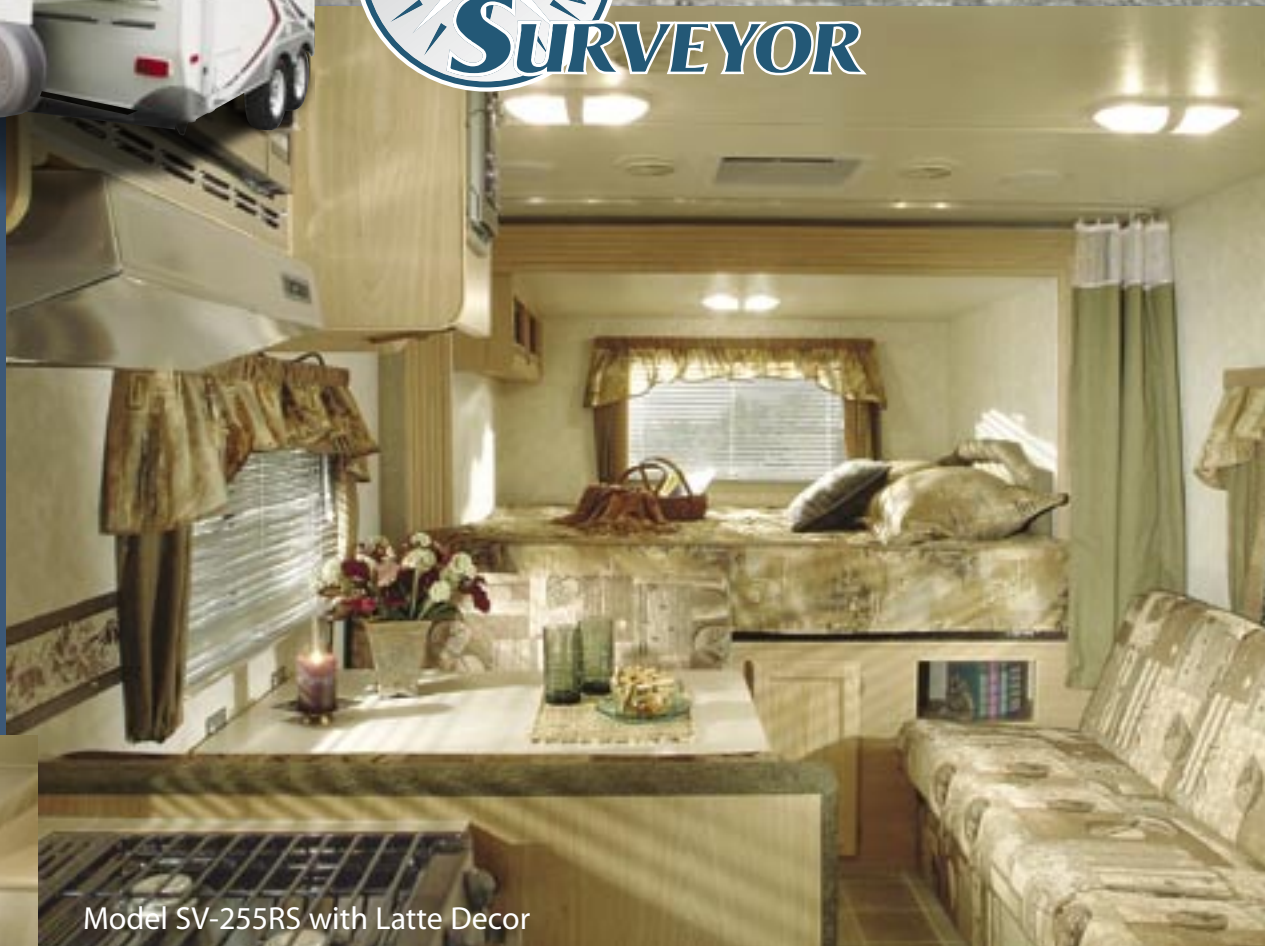
AL-KO® Axles & Easy Lube Hubs

AL-KO Axles offer many advantages over conventional axles:

- Fully independent wheel suspension.
- No metal to metal contact and no springs, shackles, hangers, or U-bolts to break or wear out.
- Lower trailer center of gravity for improved stability.



The UltrULube™ Hubs allow you to repack bearings quickly and easily without disassembly.

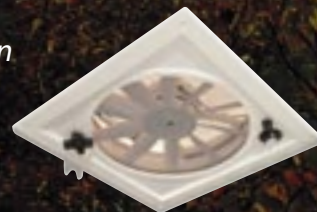


Model SV-255RS with Latte Decor



These quad bunks are perfect for larger families and you'll appreciate the slide-out bin storage under the nightstand. Pack these lightweight tub drawers anywhere and slide them in when ready to travel.

This three-speed Fantastic Fan increases air circulation that other smaller bath fans do not. Standard in all Surveyor bathrooms.



You'll appreciate the water filtration system that is standard with each Surveyor. This compact unit filters water for the entire coach, eliminating those unwanted contaminants and odors. Insuring safe drinking water for you and your family.

The SV-235RS offers twin double bunks! The unique folding bed provides ample room to store large items.

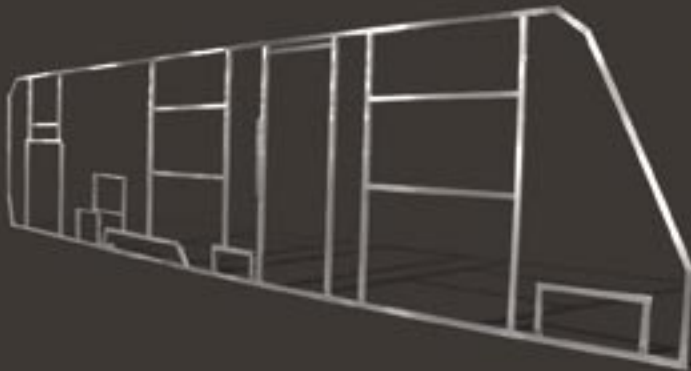




Model SV-291 with Denim Decor

The rich interior colors found in the fabrics and woods of each Surveyor reflect our desire to create an inviting, open living space for our owners. Surveyor's feature "Sweetheart Oak" cabinetry with mortise and tenon constructed cabinet doors with beaded panels, name brand appliances, durable yet attractive flooring and more. If you are in the market for a light weight towable with style - then the Surveyor is your best choice!

WHAT'S IN YOUR SIDEWALL?



Dare to compare! Your Surveyor is constructed with 1.5" tubular aluminum framing in **"all"** openings. Is this necessary - we think so! Aluminum framed openings add strength and integrity to every Surveyor sidewall. No other lightweight trailer compares.



Surveyor sidewalls feature Lamilux™ fiberglass which contains a higher gloss and less fade rate than others; 1.5" block foam insulation; welded 1.5" tubular aluminum tubing, and complete anti-wicking agent to protect the bond - all laminated together.



Tough, welded steel frames with a powder coated protection provides lasting durability and corrosion resistance.



The "storage plus" door with a unique flip-up bunk bed system allows you to pack all your necessities needed to make your camping experience enjoyable.

SURVEYOR, SURVEYOR LITE & REAR SLIDE SPECIFICATIONS

Appliances/Equipment

- Air conditioner ready
- Color-coded water lines
- Copper gas lines, double flared
- Dometic, flush-mount refrigerator
- Demand water pump
- Double-bowl kitchen sink
- Power range hood with light
- Six gallon gas water heater
- Three burner range top
- 15,000 BTU furnace (18'-21')
- 20,000 BTU ducted furnace (22'-26')
- 30,000 BTU ducted furnace (29')
- Water heater bypass system
- Monitor Panel

Bath

- ABS tub/shower
- Adjustable shower head/faucet
- Lavatory sink and faucet
- Medicine cabinet with mirror
- Shower curtain with tieback
- Thetford commode
- Skylight in tub/shower (select models)

Construction

- Welded, Aluminum framed, laminated roof with 3" block foam insulation (R11) & ducted A/C (25' and above travel trailers)
- Welded, aluminum framed, laminated roof with 1-1/2" block foam insulation (R7) (Expandables and 24' and below travel trailers)
- Welded, aluminum cage constructed, laminated walls with 1-1/2" block foam insulation (R7)
- Welded, aluminum framed, laminated floor with 1-1/2" block foam insulation (R7)
- Electric powered slide-out mechanism

Electrical

- 28', 30-amp power cord, removable
- 55 amp converter with charger
- Exterior 120 volt recept
- Patio light with amber lens
- Pre-wired for microwave oven
- 12 volt interior lighting
- 120 volt GFI protected circuit Safety

Expandable Beds

- Boltalex Weathershield tent(s)
- Automotive rubber gasket and screw-down pressure clamps
- 5" bunk cushions
- Radius door w/ hinge
- 1000 lb. capacity

Safety

- Breakaway switch
- Fire extinguisher
- LP detector
- Smoke Detector
- Ground fault protected electrical circuit(s)
- Dead-bolt door lock
- Safety chains
- Multiple egress windows
- CO Detector

Exterior

- Rubber roof with 12 year warranty
- Lamilux Super 1000 Fiberglass skin with 2 year warranty
- Radius corner windows
- Butyl tape sealant on seams
- Flush mount front window/awning
- Combination entrance/screen door with dead-bolt lock
- Outside storage compartment(s)
- Self-storing step(s)
- Designer exterior graphics
- Rotocast holding tanks
- Rotocast fresh water tank
- 20# LP tanks

Interior

- Sofa bolsters
- Hardwood framed cabinets
- Panoramic galley window
- Designer interior decors
- Valances with mini-blinds
- No-wax seamless vinyl flooring
- Solid lumber core cabinet fronts assembled with screws
- Solid oak mortise & tenon framed cabinet doors
- Reversible dinette and bunk cushions
- Power range hood with light
- Wallpaper border

Running Gear

- Ultrulube™ hubs
- Galvanized steel wheel wells
- Independent Torsion suspension system
- Radial trailer tires
- Electric Brakes, all wheels
- White spoked wheels
- ABS fender skirts
- Tough, powder coated frame
- 2-5/16" coupler

Forest River ADVANTAGE

- Fantastic Fan in Bath
- Water Filtration System (entire unit)

Options

Approximate Weight

- | | |
|---|------|
| • Air conditioning, 13500 (Expandables & 24' and below Travel Trailers) | 104# |
| • Air conditioning, 13500 ducted (25' and above Travel Trailers) | 104# |
| • Awning, A&E | 40# |
| • AM/FM CD player w/4 Speakers | 4# |
| • 30# LP Bottles w/cover | 12# |
| • Chrome wheel covers | 8# |
| • DSI water heater | 1# |
| • Monitor Panel (Std in SV) | 1# |
| • Microwave oven | 30# |
| • Gas oven | 38# |
| • Outside grill | 15# |
| • Outside Storage Drawer | 36# |
| • Outside Shower | 3# |
| • Refrigerator, 2-door (23' & above) | 17# |
| • Roof ladder (N/A rear expandables and rear slide-out models) | 15# |
| • Sink covers | 5# |
| • Spare tire & carrier | 40# |
| • Stabilizer jacks (4) (Standard in Expandables & Rear Slides) | 24# |
| • Stove cover | 5# |
| • TV antenna | 6# |
| • Water filter | 3# |
| • Tub Surround (N/A 190T) | 6# |
| • Slide-out awning topper | 35# |
| • Axle riser w/ double step | 10# |

General Warranty Information*

- | | |
|----------------------------------|--------------------|
| • Atwood appliances | 2 yrs |
| • Boltalex weathershield tent(s) | 5 yrs |
| • Dometic appliances | 3 yrs |
| • Fiberglass skin | 2 yrs |
| • Lippert slide-out mechanism | 3 yrs |
| • Powder coated frame | 2 yrs |
| • Rubber roof material | 12 yrs |
| • Fantastic Fan | (life of the unit) |
| • SHURflo water pump | 2 yrs |
| • TV antenna - Wineguard | 2 yrs |
| • Toliet - Thetford | 2 yrs |
| • Suspension system | 5 yrs |

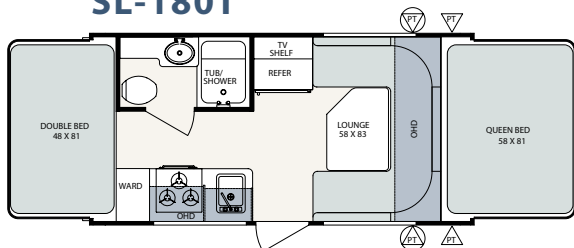
* For items not warranted by the component manufacturer, Forest River, Inc. provides a limited one year warranty on construction and workmanship. Refer to specific warranty statement in owners manual.

SURVEYOR EXPANDABLES • 8' WIDE



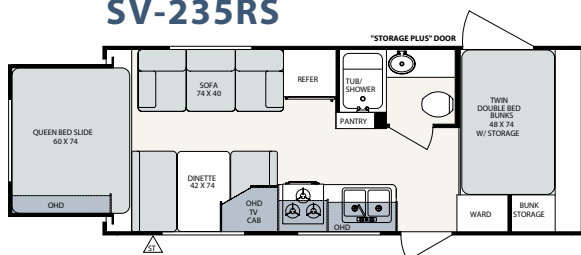
SURVEYOR LITE EXPANDABLE • 7'3" WIDE

SL-180T

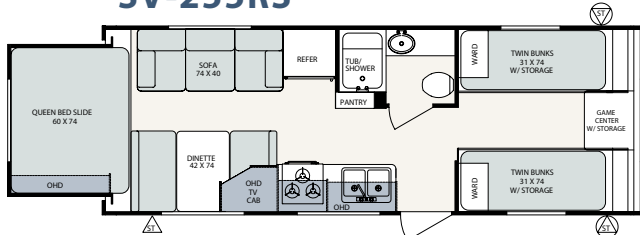


SURVEYOR REAR SLIDES • 8' WIDE

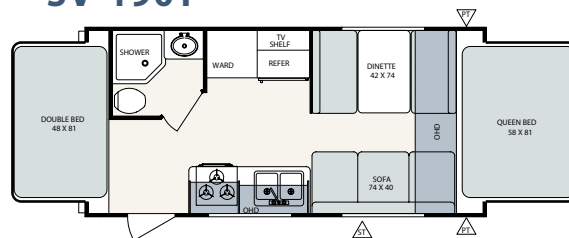
SV-235RS



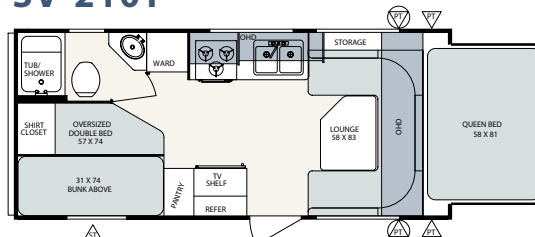
SV-255RS



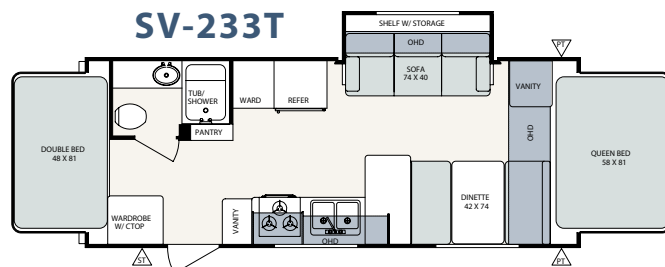
SV-190T



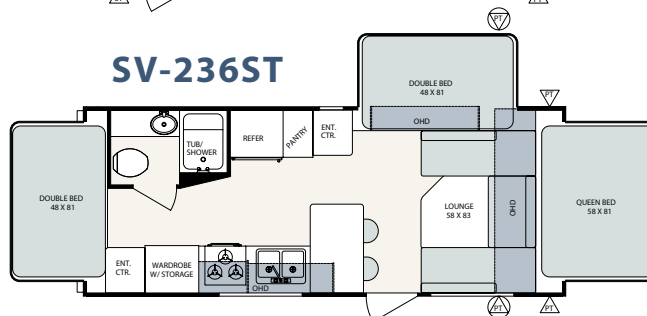
SV-210T



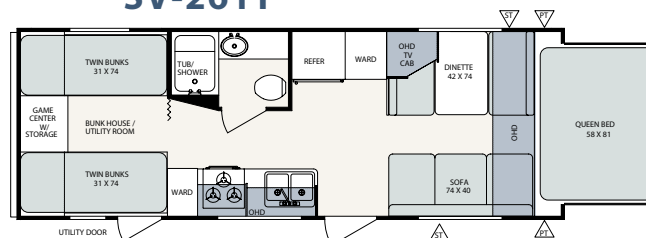
SV-233T



SV-236ST



SV-261T



*Total Dry Weight
Load Capacity
Hitch Weight
Overall Length (closed)
Overall Length (open)
Exterior Width
Exterior Height (Roof Edge)
Fresh Water (gal)
Grey Water (gal)
Black Water (gal)
Tire Size

SL180T

2467
1150
356
18'8"
21'6"
7'3"
8'2"
30
30
30
205/75/R14

SV235RS

3699
1320
360
24'6"
28'3"
8'0"
8'2"
30
30
30
205/75/R14

SV255RS

4302
960
500
27'1"
30'9"
8'0"
8'4"
30
30
30
205/75/R14

SV-190T

3034
2020
320
21'1"
23'11"
8'0"
8'2"
30
30
30
205/75/R14

SV210T

2980
2096
350
22'6"
22'7"
8'0"
8'2"
30
30
30
205/75/R14

SV233T

3767
1240
320
24'11"
27'9"
8'0"
8'2"
30
30
30
205/75/R14

SV236ST

3596
1556
496
24'5"
27'4"
8'0"
8'2"
30
30
30
205/75/R14

SV261T

3648
1525
505
27'0"
27'1"
8'0"
8'2"
30
30
30
205/75/R14

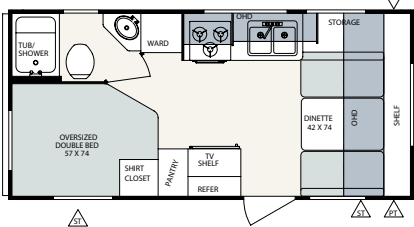
*We know weights and dimensions are an important part of your buying decision. Surveyor weights every model to ensure accuracy.

SURVEYOR TRAVEL TRAILERS - 8' WIDE

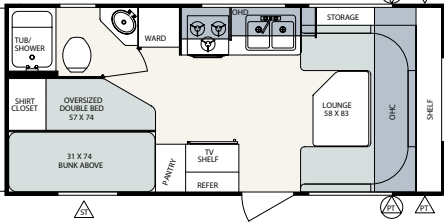


Surveyor's pass-through compartment features an impressive 29 cubic foot storage space. (Select models with front walk-around queen beds)

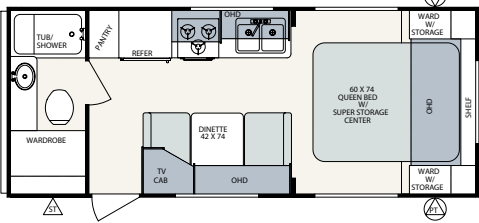
SV-191



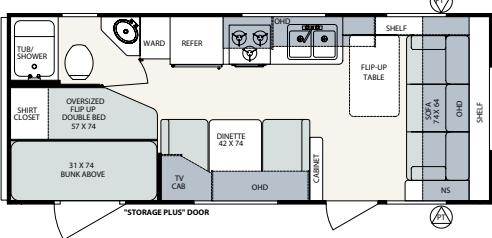
SV-210



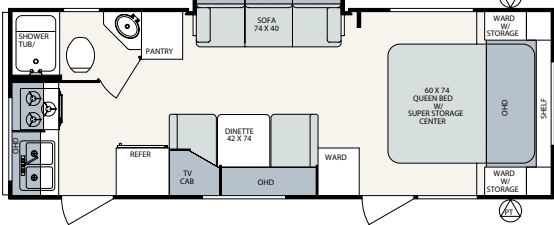
SV-230



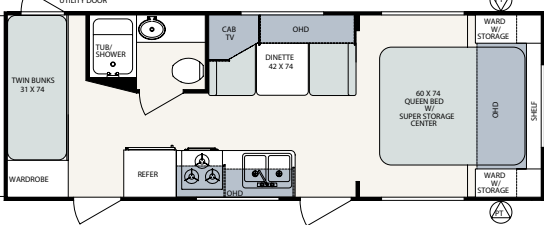
SV-234



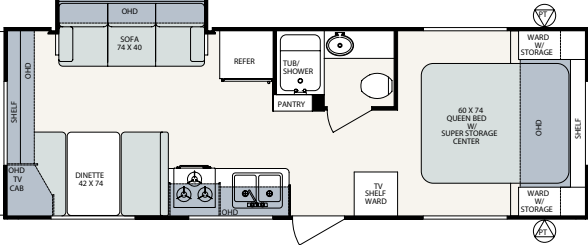
SV-260



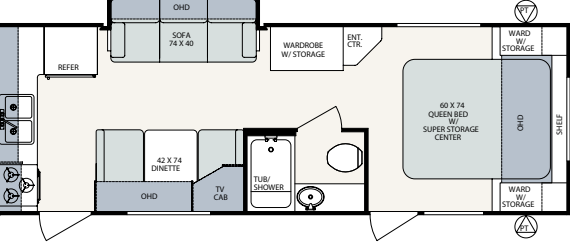
SV-262



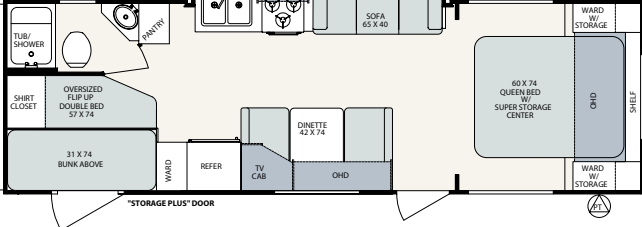
SV-263



SV-264



SV-291



| | SV191 | SV210 | SV230 | SV234 | SV260 | SV262 | SV263 | SV264 | SV-291 |
|-----------------------------|------------|------------|------------|------------|------------|------------|------------|------------|------------|
| *Total Dry Weight | 2790 | 2914 | 3337 | 3311 | 3882 | 3605 | 4324 | 4053 | 4427 |
| Load Capacity | 2160 | 2160 | 1580 | 1840 | 1180 | 1555 | 960 | 1080 | 1320 |
| Hitch Weight | 280 | 380 | 280 | 480 | 400 | 495 | 640 | 480 | 420 |
| Overall Length (closed) | 21'1" | 22'6" | 23'11" | 24'5" | 27'0" | 27'0" | 28'6" | 28'6" | 30'6" |
| Exterior Width | 8'0" | 8'0" | 8'0" | 8'0" | 8'0" | 8'0" | 8'0" | 8'0" | 8'0" |
| Exterior Height (Roof Edge) | 8'2" | 8'2" | 8'2" | 8'2" | 8'4" | 8'4" | 8'4" | 8'4" | 8'4" |
| Fresh Water (gal) | 30 | 30 | 30 | 30 | 30 | 30 | 30 | 30 | 30 |
| Grey Water (gal) | 30 | 30 | 30 | 30 | 30 | 30 | 30 | 30 | 30 |
| Black Water (gal) | 30 | 30 | 30 | 30 | 30 | 30 | 30 | 30 | 30 |
| Tire Size | 205/75/R14 | 205/75/R14 | 205/75/R14 | 205/75/R14 | 205/75/R14 | 205/75/R14 | 205/75/R14 | 205/75/R14 | 205/75/R14 |

although refinements to the product can create variations to weights and dimensions. Review a current model at your nearest authorized Surveyor Dealer today.

Towing Guide

The tow ratings listed below are the highest available for the respective models listed. Certain optional equipment may be required and other restrictions may apply. See your automotive dealer for more information.

| Vehicle | Engine | Max Tow Limit (lbs.) |
|--------------|---------|----------------------|
| Acura | | |
| MDX | 3.5 V-6 | 3500 |
| RL | 3.5 V-6 | 2000 |

| | | |
|----------------------|-------------|------|
| AM General | | |
| Hummer (2-passenger) | Diesel | 8510 |
| Hummer (2-passenger) | Turbodiesel | 8440 |
| Hummer H2 | 6.0 V-8 | 6700 |

| | | |
|--------------|---------|------|
| Buick | | |
| Rendezvous | 3.4 V-6 | 3500 |

| | | |
|------------|---------|------|
| BMW | | |
| X5 | 4.6 V-8 | 6000 |
| X5 | 3.0 I-6 | 6000 |

| | | |
|-----------------|---------|------|
| Cadillac | | |
| Escalade (AWD) | 6.0 V-8 | 8200 |
| Escalade (2WD) | 5.3 V-8 | 7400 |

| | | |
|------------------------|---------|------|
| Chevrolet/GMC | | |
| Astro/Safari (AWD) | 4.3 V-6 | 5100 |
| Astro/Safari (RWD) | 4.3 V-6 | 5300 |
| Avalanche 1500 (RWD) | 5.3 V-8 | 7300 |
| Avalanche 1500 (4WD) | 5.3 V-8 | 7100 |
| Blazer/Jimmy (2WD) | 4.3 V-6 | 5700 |
| Colorado Ext Cab (4WD) | 3.5 I-5 | 4000 |
| S-10 Sonoma Crew (4WD) | 4.3 V-6 | 5200 |
| Silverado/Sierra | 4.8 V-8 | 7300 |
| Suburban | 5.3 V-8 | 7200 |
| Tahoe/Yukon (4WD) | 5.3 V-8 | 7500 |
| Trailblazer (4WD) | 4.2 I-6 | 5600 |

| | | |
|----------------------|--------------|------|
| Chrysler | | |
| Pacifica | 3.5 V-6 | 3500 |
| Town & Country (FWD) | 3.3, 3.8 V-6 | 3800 |

| | | |
|-------------------------|--------------|------|
| Dodge | | |
| Caravan (FWD) | 3.3, 3.8 V-6 | 3800 |
| Caravan (AWD) | 3.8 V-6 | 3500 |
| Dakota (2WD) Reg. Cab. | 4.7 V-8 | 6650 |
| Dakota (2WD) Club Cab. | 4.7 V-8 | 6450 |
| Dakota (4WD) Reg. Cab. | 4.7 V-8 | 6400 |
| Dakota (4WD) Club Cab. | 3.7 V-6 | 4900 |
| Dakota (4WD) Club Cab. | 4.7 V-8 | 6150 |
| Durango (4WD) | 4.7 V-8 | 5700 |
| Durango (4WD) | 5.7 V-8 | 7300 |
| Ram (2WD) 1500 All Cab. | 4.7 V-8 | 7400 |
| Ram (2WD) 1500 All Cab. | 5.7 V-8 | 8350 |

| Vehicle | Engine | Max Tow Limit (lbs.) |
|-------------------------|---------|----------------------|
| Ford | | |
| Econoline Van | 4.2 V-6 | 5000 |
| Econoline Van | 4.6 V-8 | 6400 |
| Econoline Van | 5.4 V-8 | 6800 |
| Expedition (4WD) | 4.6 V-8 | 5000 |
| Expedition (2WD) | 5.4 V-8 | 8950 |
| Expedition (4WD) | 5.4 V-8 | 8650 |
| Explorer (2WD) | 4.0 V-6 | 5720 |
| Explorer (4WD) | 4.0 V-6 | 5380 |
| F-150 Reg. Cab. (2WD) | 4.2 V-6 | 4600 |
| F-150 Reg. Cab. (2WD) | 4.6 V-8 | 6100 |
| F-150 Reg. Cab. (2WD) | 5.4 V-8 | 8200 |
| F-150 Super Crew (2WD) | 4.6 V-8 | 6500 |
| F-150 Super Crew (4WD) | 4.6 V-8 | 6200 |
| Ranger Reg. Cab. (2WD) | 2.3 I-4 | 2240 |
| Ranger Reg. Cab. (4WD) | 3.0 V-6 | 3320 |
| Ranger Super Cab. (2WD) | 4.0 V-6 | 5860 |
| Windstar | 3.8 V-6 | 3500 |
| Excursion | 5.4 V-8 | 7600 |

| | | |
|--------------|---------|------|
| Honda | | |
| Passport | 3.2 V-6 | 4500 |
| Odyssey | 3.5 V-6 | 3500 |
| Pilot | 3.5 V-6 | 3500 |

| | | |
|----------------|---------|------|
| Hyundai | | |
| Santa Fe (2WD) | 2.7 V-6 | 3200 |
| Santa Fe (4WD) | 2.7 V-6 | 2700 |

| | | |
|-------------------|--------------|------|
| Isuzu | | |
| Rodeo/Rodeo Sport | 2.2, 2.6 I-4 | 2500 |
| Rodeo | 3.2 V-6 | 4500 |
| Trooper | 3.5 V-6 | 5000 |
| Axiom | 3.5 V-6 | 7000 |

| | | |
|----------------|---------|------|
| Jeep | | |
| Grand Cherokee | 4.0 I-6 | 5000 |
| Grand Cherokee | 4.7 V-8 | 6500 |
| Liberty | 2.4 I-4 | 2000 |
| Liberty | 3.7 V-6 | 5000 |
| Wrangler | 4.0 I-6 | 2000 |

| | | |
|------------|---------|------|
| Kia | | |
| Sportage | 2.0 I-4 | 2000 |
| Sedona | 3.5 V-6 | 3500 |
| Sorento | 3.5 V-6 | 3500 |

| | | |
|-------------------|---------|------|
| Land Rover | | |
| Discovery | All | 5500 |
| Range Rover | 4.4 V-8 | 7700 |

| | | |
|--------------|---------|------|
| Lexus | | |
| RX330 | 3.3 V-6 | 3500 |
| LX470 | 4.7 V-8 | 6500 |
| GX470 | 4.7 V-8 | 5000 |

| Vehicle | Engine | Max Tow Limit (lbs.) |
|----------------|---------|----------------------|
| Lincoln | | |
| Aviator | 4.6 V-8 | 7100 |
| Navigator | 5.4 V-8 | 8800 |

| | | |
|--------------|---------|------|
| Mazda | | |
| B3000 (4WD) | 3.0 V-6 | 2500 |
| B4000 | 4.0 V-6 | 5900 |
| B4000 (4WD) | 4.0 V-6 | 3300 |
| Tribute | 3.0 V-6 | 3500 |

| | | |
|----------------------|---------|------|
| Mercedes-Benz | | |
| G-500 | 5.0 V-8 | 7000 |
| ML 350 | 3.7 V-6 | 5000 |
| ML 500 | 4.3 V-8 | 5000 |
| G55AMC | 5.4 V-8 | 7000 |

| | | |
|----------------|---------|------|
| Mercury | | |
| Mountaineer | 4.0 V-6 | 5460 |
| Mountaineer | 4.6 V-8 | 7300 |
| Villager | 3.3 V-6 | 3500 |

| | | |
|-------------------|-----|------|
| Mitsubishi | | |
| Montero | All | 5000 |

| | | |
|---------------|---------|-------|
| Nissan | | |
| Pathfinder | 3.5 V-6 | 5000 |
| Frontier | 2.4 I-4 | 3500 |
| Xterra | 3.3 V-6 | 5000 |
| Quest | 3.3 V-6 | 3,500 |

| | | |
|-------------------|---------|------|
| Oldsmobile | | |
| Bravada (RWD) | 4.2 I-6 | 5800 |
| Silhouette | 3.4 V-6 | 3500 |

| | | |
|----------------|---------|------|
| Pontiac | | |
| Aztec | 3.4 V-6 | 3500 |
| Montana | 3.4 V-6 | 3500 |

| | | |
|---------------|---------|------|
| Saturn | | |
| Vue | 3.0 V-6 | 2500 |

| | | |
|-------------------------|-----|------|
| Subaru | | |
| Legacy/Outback/Forester | All | 2400 |

| | | |
|---------------|---------|------|
| Toyota | | |
| 4 Runner | 3.4 V-6 | 5000 |
| 4 Runner | 4.7 V-8 | 7000 |
| Land Cruiser | 4.7 V-8 | 6500 |
| Sienna | 3.3 V-6 | 3500 |
| Tacoma | 3.4 V-6 | 5000 |
| Tundra | 4.7 V-8 | 7200 |



SURVEYOR DIVISION
Forest River Inc.
2703 College Avenue
Goshen, IN 40527
Ph. 574.533.1105

www.forestriverinc.com

www.forestriveraccessories.com

As Surveyor constantly strives to improve our product, all specifications listed in this informative brochure are subject to change without notice or obligation. Photos may show optional equipment which is not included in the purchase price of the unit. Review a current model on your dealer's lot today.

1M DCD 11/04

Your Dealer: