

2004 COLORADO

2004 Travel Trailers and Fifth Wheels



You've Arrived... Colorado.



Luxurious designer decors, maple cabinets with raised panel doors, 6'7" tall slide rooms (H5s) and oversized dinettes are standard features on the Colorado. Main slide rooms feature a large picture window at the dinette.



Colorado's galleys feature a large oven with a three-burner range, oversized microwave, 8 cubic foot refrigerator, and an oversized double bowl acrylic sink, pull-out sprayer faucet and backsplash. Colorado maximizes kitchen storage with large pots and pans drawers on steel rollers, oversized pantry with pull-out drawers, counter top extensions and additional overhead storage cabinets.

The 35RL features a rear sunken living room with an overstuffed L-shaped sofa. All Colorados feature a home entertainment center with 24" TV, CD/DVD/MP 3 player and surround sound with sub-woofer.

COLORADO



Designed for the discriminating RV owner, the 2004 Colorado surrounds you in luxury. Dazzling interior decors, solid maple hardwood cabinets, brushed nickel hardware and 30 ounce frieze carpeting are just a few of the standard features that make the Colorado your best value.

Sophisticated, expansive living areas define the Colorado product line. Colorado boasts elegant floorplans with spacious and functional kitchens, master baths and bedroom suites.



There is more to a quality recreational vehicle than the interior. Colorado's six-way welded aluminum superstructure means more strength and durability than the competition. Walls, roof, floors and front and rear walls are aluminum framed. The walls and floor are filled with polystyrene insulation. Two-tone, pigmented fiberglass encapsulates the exterior walls. The aluminum trussed roof features a 5" crown and is insulated to R-14. Colorado features a full walk-on roof covered with a one-piece rubber membrane.

The underbelly is insulated, heated and enclosed to protect electrical, plumbing, and mechanical systems from the hazards of the road.



Enjoy the view with Colorado's large panoramic windows. Rear fiberglass caps are standard on Colorado high-profile fifth wheels and are available on mid-profile fifth wheels and travel trailers.

Storage, storage, storage. Designed for maximum storage, Colorado's fifth wheel bedrooms feature large mirrored closets with shelves, shirt closets with drawers and oversized storage drawers below the lift-up bed. Bed slides are standard on high-profile fifth wheels and available on travel trailers.

COLORADO



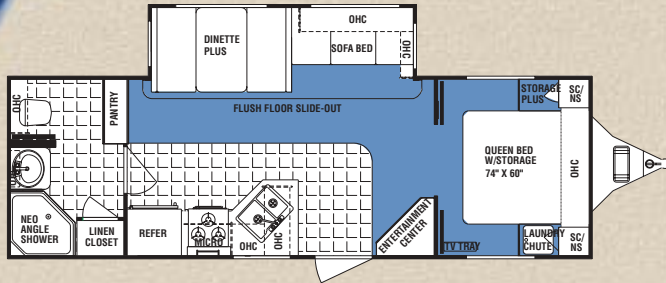
Colorado's home office workstation is a standard feature on the 35RL (shown). With keyboard tray, phone line, 110v outlets and storage drawers, the home office computer workstation helps you keep up with those emails while exploring the Rocky Mountains. See floorplan guide for additional floorplans with the home office workstation.



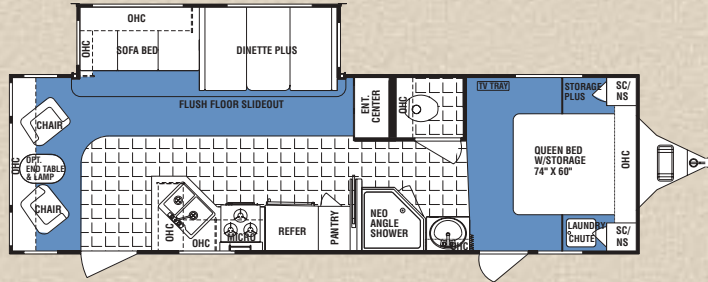
Beauty, Comfort, Style and Durability. You've Arrived... Colorado.

2004 Travel Trailers

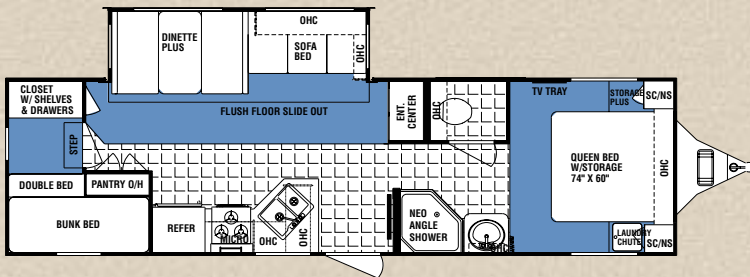
26FB



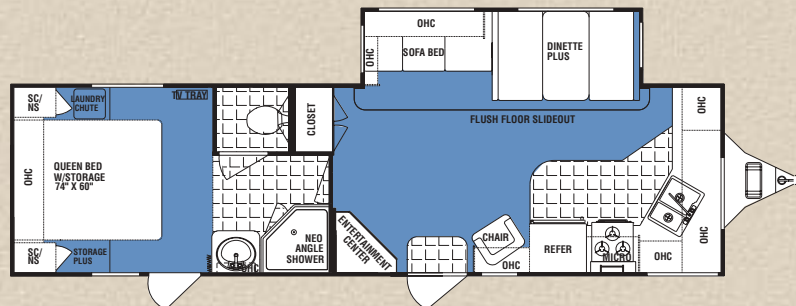
30RL
Option M
(front)



31BK
Option M
(front),
Option T

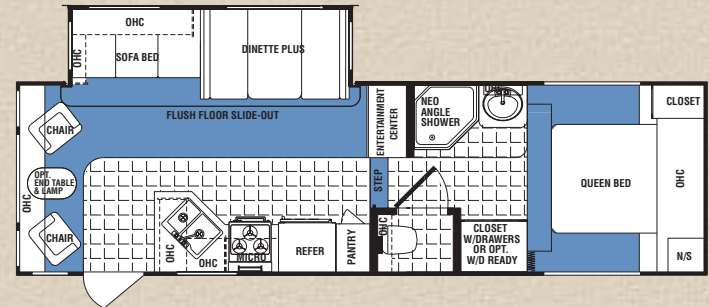


31FK
Option M
(rear)

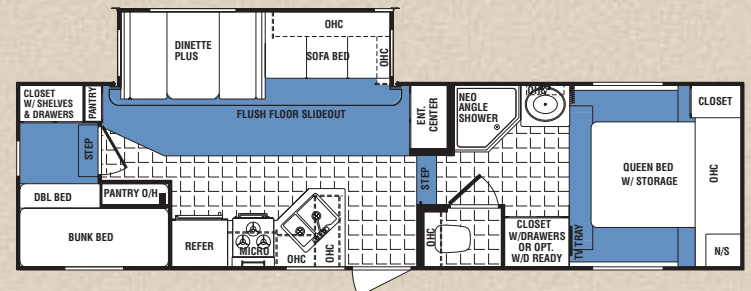


2004 Mid-Profile Fifth Wheels

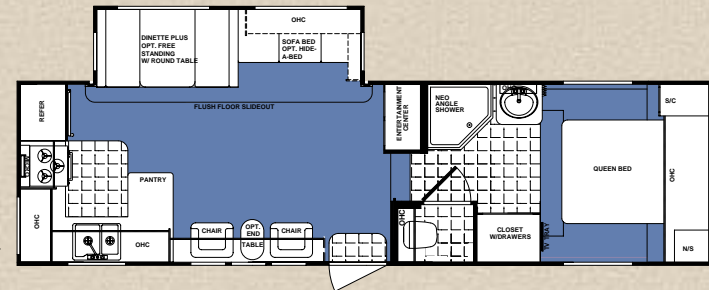
27RL-M5



28BH-M5
OPTIONS D, T

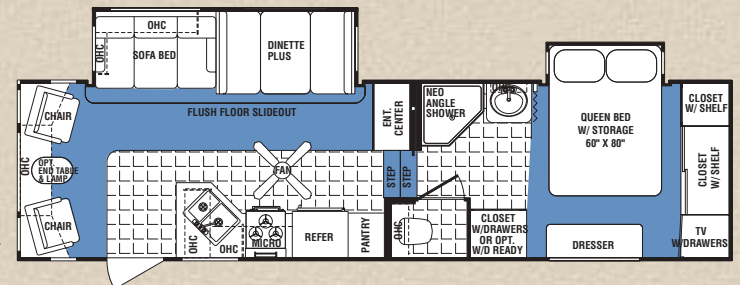


28RK-M5

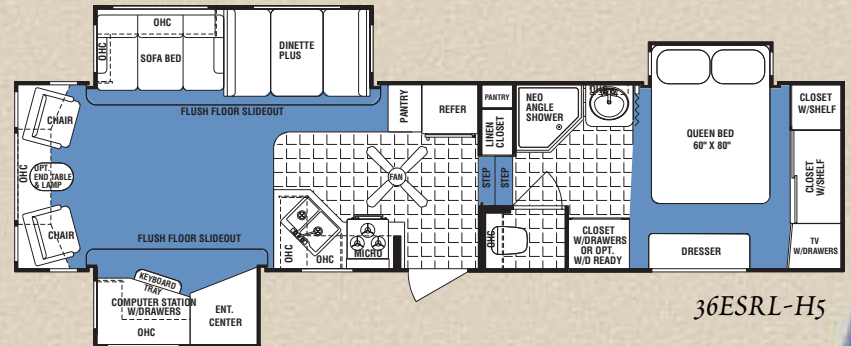
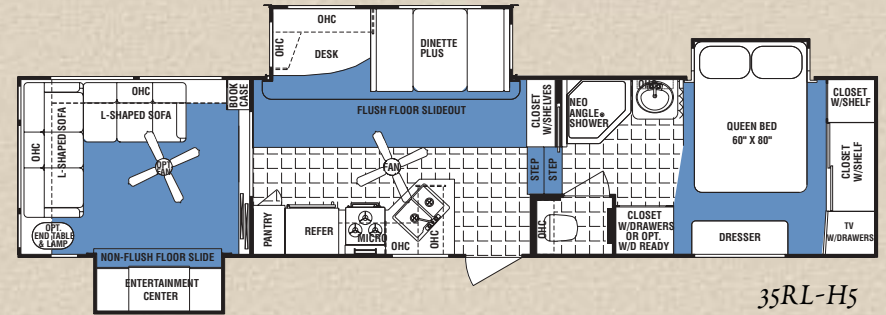
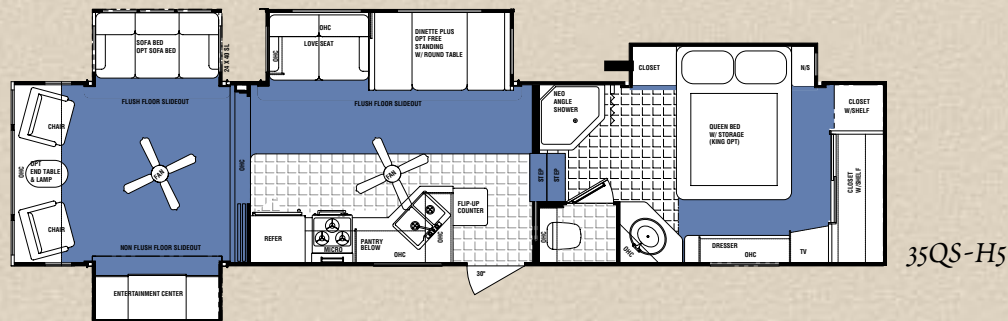
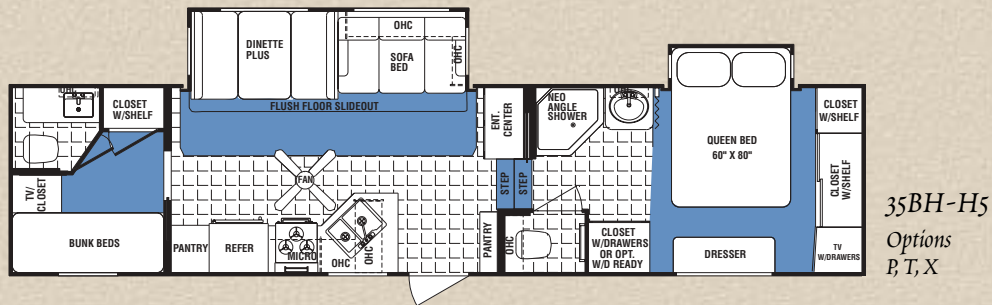
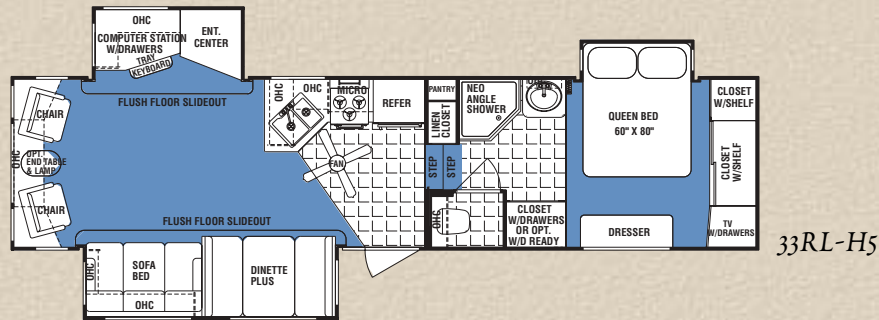
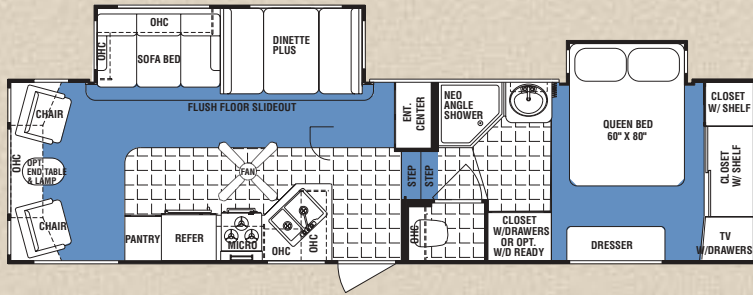


2004 High-Profile Fifth Wheels

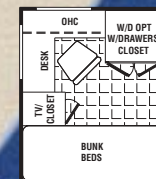
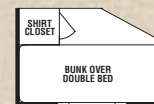
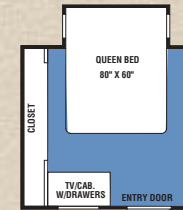
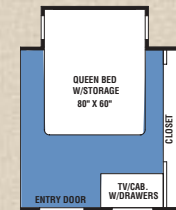
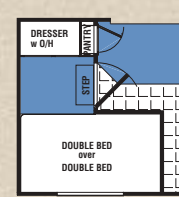
29RL-H5



2004 High-Profile Fifth Wheels



Floorplan Options





Standard Features

Exterior

	HIGH-PROFILE FIFTH WHEELS	MID-PROFILE FIFTH WHEELS	TRAVEL TRAILER
30" radius entrance doors	•	•	•
Battery box with vent (n/a TTs)	•	•	n/a
Battery rack on A-frame (n/a H5s and M5s)	n/a	n/a	•
Bedroom slide (most models)	•	n/a	•
Black water flush	•	n/a	•
Enclosed dump valves	•	n/a	n/a
Exterior light under gooseneck	•	•	n/a
Fiberglass laminated sidewalls—pigmented two tone	•	•	•
Flush door latch with dead bolt lock	•	•	•
Front gelcoat fiberglass cap	•	•	•
High-end designer graphics	•	•	•
Extra large pass-through outside storage compartments (most models)	•	•	n/a
Locking insulated baggage doors with finger pulls	•	•	•
One piece EPDM rubber roof	•	•	•
Patio / step light by door	•	•	•
Power front landing gear	•	•	n/a
Radius jalousie tinted windows	•	•	•
Rear fiberglass cap	•	opt	opt
Rear stabilizer jacks	•	•	•
Seamless rotocast holding tanks	•	•	•
Sewer hose storage	•	•	•
Side slider windows in living room slide-outs	•	•	•
Triple entry step	•	•	•
Twin 30# LP bottles with auto changeover	•	•	•

6-Way Fully Welded "Aluminum Cage" Construction

5" welded aluminum truss roof rafters w/ 3/8" decking	•	•	•
Welded aluminum framed fully laminated 2" sidewall	•	•	•
Block foam insulation sidewalls and floor	•	•	•
Laminated/welded aluminum framed floor	•	•	•
1 pc seamless 5/8" Weyerhaeuser structure wood floor decking	•	•	•
Enclosed underbelly with heated tanks	•	•	•
Large pass-through storage under bath deck	•	•	n/a
Fiberglass sidewalls	•	•	•
Roofline rain gutter with down spouts	•	•	•
Electric worn gear rack and pinion with flush floor slide-out system with manual override	•	•	•



Colorado's standard home entertainment center is sure to be a hit with the entire family!

Colorado maximizes kitchen storage with the use of a food pantry with slide-out shelves (standard on most floorplans).

Chassis / Suspension

	HIGH-PROFILE FIFTH WHEELS	MID-PROFILE FIFTH WHEELS	TRAVEL TRAILER
15" radial tires (15" on M5 & TTs)	•	•	•
16" radial tires, 33" and up	•	n/a	n/a
Al-Ko "Ultra-Lube" axles	•	•	•
Al-Ko leaf spring axles	n/a	•	•
Al-Ko leaf spring axles with shock absorbers	•	n/a	n/a
Break away safety switch	•	•	•
10" cambered I-beam frame	•	n/a	n/a
8" cambered I-beam frame	n/a	•	•
Electric brakes on all wheels	•	•	•

Electrical

110 volt outlet in slide room (living area)	•	•	•
30 amp detachable power cord	•	•	•
55 amp converter with battery charger	•	•	•
Ceiling lights with wall switch	•	•	•
GFI protected 110-volt duplex receptacles	•	•	•

Bath

Flat floor bath to bed deck (no step)	•	n/a	n/a
Semi-flush floor bath deck	n/a	•	n/a
Medicine cabinet w/ mirror door and make-up lights	•	•	•
Neo Angle shower w/ surround, opaque glass door	•	•	•
Power roof vent	•	•	•
Skylight above shower	•	•	•
Thetford foot pedal toilet	•	•	•
Toothbrush holder, toilet paper holder, towel bar	•	•	•

Appliances / Equipment

3 burner range with oversized 21" oven	•	•	•
Double bowl acrylic kitchen sink	•	•	•
Extra large 8 cu. ft. double door refrigerator	•	•	•
Folding range cover	•	•	•



Ultra Lube hubs for Al-Ko are standard on the 2004 Colorado. Just remove the dust cap to access the grease zerk fitting to keep your bearings lubricated.



Ceiling fans with lights are standard on high-profile fifth wheels. An optional fluorescent lighting package is available on all floorplans.



Large pass-through heated storage compartments are standard on high-profile and mid-profile fifth wheels. Storage drops down below the chassis rail for additional storage.

Appliances, continued

	HIGH-PROFILE FIFTH WHEELS	MID-PROFILE FIFTH WHEELS	TRAVEL TRAILER
Large residential-style microwave	•	•	•
Single lever faucet with telescoping sprayer	•	•	•
Sink covers	•	•	•
Cable TV hook up	•	•	•
DSS prep for satellite hook up	•	•	•
Home theater system w/ TV, DVD/CD/MP3 & sub woofer	•	•	•
Second TV outlet in bedroom	•	•	•
TV antenna with booster	•	•	•
13.5 BTU ducted air conditioner w/ quick cool feature	•	•	•
6 gallon gas/electric water heater with DSL	•	•	•
8500 Series A&E awning	•	•	•
12V water pump	•	•	•
Adjustable ceiling A/C ducts	•	•	•
Hydro-flame forced air, DSI furnace with wall thermostat	•	•	•
Floor ducted heat	•	•	•
Systems monitor panel	•	•	•
Water heater bypass system with low point drain	•	•	•

Interior

6'7" living room slide-out interior height (H5s)	•	n/a	n/a
Brushed nickel appliances and hardware	•	•	•
Ceiling fan with light	•	n/a	n/a
Decorator reading lights above bed	•	•	•
Designer arched maple cabinet doors throughout	•	•	•
Designer valances	•	•	•
Fire extinguisher	•	•	•
Interior grab handle at entrance door	•	•	•
Mini blinds throughout (vertical blinds in RL models)	•	•	•
Overhead cabinets with decorative glass doors in living room slide-out	•	•	•
Oversized storage drawers throughout	•	•	•
Phone jack / computer line	•	•	•
Quilted bedspread w/ pillow shams and headboard	•	•	•

Interior, continued

	HIGH-PROFILE FIFTH WHEELS	MID-PROFILE FIFTH WHEELS	TRAVEL TRAILER
Roof vents	•	•	•
Smoke detector	•	•	•
Solid wood drawer with residential style metal drawer glides	•	•	•
Knife holder	•	•	•
Solid maple decorative fascia on living room slide	•	•	•
Swivel rocker (most models)	•	•	•

Décor Selections



Anton Blue



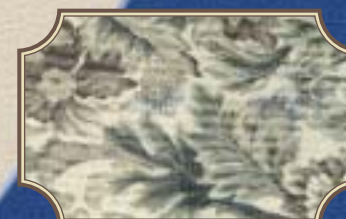
Baretto Green



Boysenberry



Haze Taupe



Skylar Green



Upgrade your Colorado
with the optional
Washer Dryer Prep
feature. No more trips
to the laundromat!

Optional Features

Options

Convenience Package: Rechargeable flashlight,
lock box, large entry assist handle, patio light, water
filter w/ spout & "spray-away" exterior wash station

	HIGH-PROFILE FIFTH WHEELS	MID-PROFILE FIFTH WHEELS	TRAVEL TRAILER
12 volt ultra heat pads	opt	opt	opt
15M BTU ducted A/C	opt	opt	opt
16" tires (standard 34' and above)	opt	—	—
2nd A/C (13.5M BTU)	opt	opt	opt
5 spoke premium aluminum rims	opt	opt	opt
50 amp service (N/A TTs & M5 FWs)	opt	—	—
Bedroom slide	std	—	opt
Day/night shades in place of mini-blinds	opt	opt	opt
Duo pane solar reflective windows	opt	opt	opt
End table with lamp (most models)	opt	opt	opt
Fantastic fan w/rain sensor & thermostat	opt	opt	opt
Fiberglass rear cap	std	opt	opt
Fireplace (triple slides only)	opt	—	—
Fluorescent lighting package	opt	opt	opt
Generator installed	opt	—	—
Generator prep	opt	—	—
Hide-a-bed sofa	opt	opt	opt
Hide-a-bed sofa with footrests	opt	opt	opt
High gloss fiberglass walls	opt	opt	opt
Polyair insulation in roof	opt	opt	opt
Power tongue jack	—	—	opt
Quick release front jacks (most models)	opt	opt	—
Rear ladder	opt	opt	opt
Rocker/recliner/glider IPO swivel rocker	opt	opt	opt
Free standing dinette & 4 chairs (round or square)	opt	opt	opt
Scare lights	opt	opt	opt
Solid maple doors in slide-out overhead	opt	opt	opt
Solid maple slide out fascia on bedroom slide	opt	opt	opt
Spare tire	opt	opt	opt
Washer/dryer prep	opt	—	—
10 gallon gas/electric water heater	opt	—	—
50 amp service	opt	—	—



Rocker-recliners with foot rest are
available in most Colorado floorplans.



Add the sofa sleeper
option to the 35RL
and make your
sunken living room
a guest bedroom.



A residential-style
sofa sleeper is available
as an upgrade.



The optional
Spray-Away exterior
wash station
includes both hot and
cold water lines and a
quick-release coil hose
with sprayer.



Colorado Quality 6-way Aluminum Cage Construction

- 
- 1 Full fiberglass rear cap (H5, Opt. TT & M5)
 - 2 13,500 BTU ducted air conditioner
 - 3 One-piece EPDM rubber roof w/12 year manufacturer's warranty
 - 4 3/8" Weyerhaeuser structural wood decking w/25 year warranty
 - 5 Poly air insulation (opt.) takes roof to R-21
 - 6 2 layers of R-14 fiberglass insulation
 - 7 1-1/2" thick polystyrene block foam R-7 insulation
 - 8 Ducted air conditioning through roof rafters
 - 9 5" aluminum truss roof rafters
 - 10 Scare light (optional)
 - 11 Full front cap w/clearance lights
 - 12 Smooth fiberglass filon exterior (gel coat optional)
 - 13 Decorative wallboard
 - 14 Radius-cornered baggage doors
 - 15 6000# electric front jacks (H5 only)
 - 16 I-beam frame (10" fifth wheels, 8" travel trailers)
 - 17 Polystyrene R-7 block foam insulation—floor
 - 18 Totally enclosed insulated and heated underbelly
 - 19 Full 11" outriggers
 - 20 Galvanized aluminum laminated to 1/8" thick luan board (floors)
 - 21 Triple fold-away steps (fifth wheels)
 - 22 15" radial tires, 16" on 33' and up
 - 23 Al-Ko leaf spring axles with ultra lube hubs
 - 24 Polyair insulation (R-7) protecting tanks and mechanicals
 - 25 Laminated aluminum framed floor
 - 26 Radius jalousie windows
 - 27 2" thick laminated fiberglass bonded walls
 - 28 5/8" one-piece Weyerhaeuser structure wood with 25 year warranty
 - 29 1-1/2" x 1-1/2" aluminum framed walls
 - 30 Tile-like vinyl flooring
 - 31 30 ounce frieze carpeting
 - 32 Solid maple raised panel cabinet doors

No matter where you look, Colorado is the new standard of quality, feature by feature.

Colorado Specifications & Weights

	Exterior Width	Exterior Height	Exterior Length	Hitch Dry Weight	Gross Vehicle Weight	Unloaded Vehicle Weight	Net Cargo Capacity (gal.)	Fresh Water (gal.)	Gray Water (gal.)	Black Water (gal.)	Tire Size	Furnace Size (BTUs)
<i>Travel Trailers</i>												
26FB	8'	10' 11"	29' 9"	902	9680	7128	2552	46	31	31	ST225/75R15(D)	31,000
30RL	8'	10' 11"	32' 3"	1008	11176	7606	3570	46	31	31	ST225/75R15(D)	31,000
31BK	8'	10' 11"	34' 5"	1232	11176	8168	3008	46	31/31	31	ST225/75R15(D)	31,000
31FK	8'	10' 11"	32' 11"	884	9680	7088	2592	46	31/31	31	ST225/75R15(D)	31,000
<i>Mid-Profile Fifth Wheels</i>												
27RL-M5	8'	11' 11"	29' 11"	1606	10560	8236	2324	46	31/31	31	ST225/75R15(D)	35,000
28BH-M5	8'	11' 11"	32' 2"	1542	10560	8672	1888	46	31/31	31	ST225/75R15(D)	35,000
28RK-M5	N/A	N/A	N/A	N/A	N/A	N/A	N/A	N/A	N/A	N/A	N/A	N/A
<i>High-Profile Fifth Wheels</i>												
29RL-H5	8'	12' 9"	33' 4"	1924	12192	9694	2498	46	31/31	31	ST225/75R15(D)	35,000
31RL-H5	8'	12' 11"	34' 2"	2142	12192	9588	2604	46	35/35	46	ST225/75R15(D)	35,000
33RL-H5	8'	12' 11"	36' 2"	1934	14400	10378	4022	46	35/35	35	LT235/85R16(E)	35,000
35BH-H5	8'	12' 11"	37' 6"	2252	12480	10526	1954	46	35/35	35/35	LT235/85R16(E)	35,000
35QS-H5	N/A	N/A	N/A	N/A	N/A	N/A	N/A	N/A	N/A	N/A	N/A	N/A
35RL-H5	8'	12' 11"	39' 8"	2470	14400	11682	2718	46	31/31	31	LT235/85R16(E)	35,000
36ESRL-H5	8'	12' 9"	36' 7"	1956	14400	10712	3688	46	40/40	40	LT235/85R16(E)	35,000



Why A Thor Product Is Your Best RV Value:

Thor Industries, Inc., listed on the New York Stock Exchange, proudly traces its history back over seventy years to the pioneering days of the RV industry with the founding of Airstream, the industry's oldest and most renowned brand. Our total commitment to quality and our philosophy of putting our customers first has led to our continuous growth. Today, Thor is the largest builder of RVs. Thor's strong financial condition and years of solid growth are your assurance that we will be here to serve you for years to come. We think this extra peace of mind is important when you are making a significant investment. Because our customers are always #1 with us, we work harder than other manufacturers to satisfy you.



This brochure is printed on recycled paper as part of Thor's corporate effort to minimize waste and conserve our natural resources. Providing safe, fuel-efficient recreational vehicles is Thor's way of further demonstrating our role as the industry leader in safeguarding our nation's environment.



Vehicle Loading – Every effort has been made to provide the greatest number of options for the recreation vehicle owner. Along with these choices comes the responsibility to manage the loads that are imposed by the choices so that they remain within the manufacturer's specified chassis weight limits. Do not overload the recreation vehicle.

Dry weights based on standard run and includes some optional features. Net carrying capacity (NCC) determined by subtracting unloaded vehicle weight (UVW) from gross vehicle weight (GVWR) and includes fluids, options and cargo. Liquid capacities and weights are approximations only.

Warning: This information is intended as a guide only. Weights of individual vehicles may vary. Consult your owner's manual for complete loading, weighing and towing instructions.

Product information, specifications, and photography in this brochure were as accurate as possible at time of printing. Photographs may contain some features that are optional on your vehicle. Since we continually strive to improve our products, actual products may differ. Prices and specifications are subject to change without notice. **All capacities are approximate and dimensions are nominal. Some features shown are optional and may be different or unavailable in Canada.** Vehicles are designed for recreational use only and not intended for use as a primary residence.

2164 Caragana Court • Goshen, IN 46526
Sales 574.534.1224 • Fax 574.533.3807
Parts, Service & Information 574.537.0700
www.colorado-rv.com

©2003 Thor Industries, Inc.
Printed in U.S.A.
1103-CO-R1

Your Local Dealer