

# Embassy & Embassy Diesel

EMBASSY 2004



TAKE FREEDOM *Further*







# COME HOME TO FREEDOM

Wake up in a new city. Sleep  
surrounded by stars. Breathe in pure  
country air. The freedom itself is  
exhilarating – but it's the  
environment that makes it complete.

A34F shown with Lapis Blue Décor >>





# All Under One Roof

The 2004 Embassy is better and bolder than ever before. This impressive motorhome takes RV living to new heights with more amenities, more storage, and an unparalleled sense of style.

With standard features including a generator, 20-inch television, and rearview camera and monitor, the Embassy covers much more than the basics. Configured to accommodate a host of options, if desired, you can add on any of the following:

- DVD/VCR combination unit
- Wood laminate flooring in the galley
- Air conditioning
- Painted skirts and baggage doors
- Awnings

To extend your RV season from early spring to late fall, consider the optional XL package which includes:

- Enclosed, insulated and heated holding tanks
- Light package in baggage compartments
- Rear auxiliary heater
- Thermal pane windows



Visit [www.tripleerv.com](http://www.tripleerv.com) for details on available options.



1 The private master bedroom is furnished with plush carpet, an island bed with innerspring mattress, and pleated shades – guaranteeing a great rest.

2 Featuring top quality appliances and fixtures, including a slide-out pantry (on select models), the galley helps make meal prep convenient and enjoyable.

3 With plenty of easily accessible exterior storage, there's room for larger items like bar-b-ques and golf clubs.

4 The spacious lavatory is equipped with elegant fixtures and a neo angle shower. (Select models only)

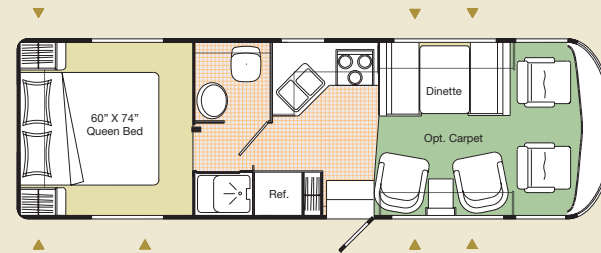


# STANDARDS AND OPTIONS – EMBASSY GAS

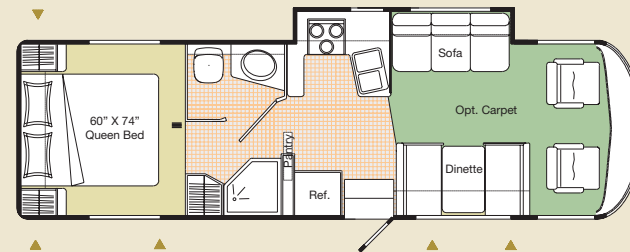
S = Standard O = Option <b>New</b> = New for 2004		A29	A30G	A34F	A36FB			A29	A30G	A34F	A36FB
<b>VEHICULAR</b>							<b>INTERIOR</b>				
	Air Conditioner - Chassis	S	S	S	S		Bedspread - Decorative Bedspread & Throw Pillows	S	S	S	S
	Airbag Assist Rear Suspension	S	S	S	S		Blind - Venetian Blind in Galley	S	S	S	S
<b>New</b>	Airbag Assist Suspension - Front	O	O	O	O		Borders - Wall Borders in Galley & Bedroom Areas	S	S	S	S
	Batteries - Auxiliary Coach Batteries (2 x 12 V)	S	S	S	S		Ceiling - Automotive "Soft Touch" Headliner	S	S	S	S
	BIRD - Bi-directional Isolator Relay Delay Battery Charging	S	S	S	S		Detectors - Electronic Smoke, LP & CO Detectors	S	S	S	S
	Block Heater	S	S	S	S		Doors - Raised Solid Oak Cabinet Doors	S	S	S	S
	Bumper - Steel Reinforced Rear Bumper	S	S	S	S		Drawers - Dual Roller Glide Drawers with Travel Lock	S	S	S	S
	Chassis - Ford V-10, 6.8 L V-10 Triton - 18,000 LB GVW - 190" Wheelbase	S	S	-	-		Fan - Thermostatically Controlled Ceiling Fan (Bedroom)	O	O	O	O
	Chassis - Ford V-10, 6.8 L V-10 Triton - 20,500 LB GVW - 228" Wheelbase	-	-	S	-		Fire Extinguisher - Dry Chemical	S	S	S	S
	Chassis - Ford V-10, 6.8 L V-10 Triton - 22,000 LB GVW - 228" Wheelbase	-	-	-	S	<b>New</b>	Flooring - Carpet in Living Area as per Floor Plan	O	O	O	O
	Cruise Control and Tilt Steering Wheel	S	S	S	S		Flooring - Linoleum Living Area, Galley & Lavatory with Carpet in Bedroom	S	S	S	S
	Fans - Chrome Cockpit Ventilating with Dash Switch	O	O	O	O	<b>New</b>	Flooring - Wood-look Laminate Flooring in Galley with Carpet in Living Area	O	O	O	O
	Hitch - Trailer Hitch Receiver with Wiring and Plug - Class III	S	S	S	S		Headboard - Fabric Wrapped Deluxe Headboard	S	S	S	S
	Jacks - HWH Hydraulic Levelling Jacks with Joystick Control	O	S	S	S		Shades - Pleated	S	S	S	S
	Light - High Mounted Stoplight – LED Long Life	S	S	S	S						
<b>New</b>	Mirrors - Heated Remote Mirrors	S	S	S	S		<b>FURNITURE</b>				
	Rust Protection	O	O	O	O		Bed - Twin Beds (36" x 74")	O	O	O	-
	Slide-out - HWH Hydraulic Slide-out System	-	S	S	S		Booth Dinette - Steel Framing for Seat Belts	S	S	-	-
	Spare Tire and Wheel	-	S	S	S		Booth Dinette - with under Seat Storage	-	-	S	S
	Switch - Battery Boost Switch	S	S	S	S		Chair - Cloth Cocktail Chair (2 in A29, 1 in A36FB and A34F)	S	-	S	S
	Switch - Battery Disconnect Switch	S	S	S	S		Flip Table - Oak	S	-	S	S
	Tires - Radial Ply	S	S	S	S	<b>New</b>	Hide-a-Bed - in lieu of Jackknife Sofa	-	-	S	S
	Transmission - 4-Speed Automatic with Overdrive	S	S	S	S		Make-up Table in Bedroom	-	-	-	S
	Transmission Cooler	S	S	S	S		Mattress - Air Coil Mattress Upgrade on Hide-a-Bed (with 110 V Air Pump)	-	-	O	O
	Undercoating - Automotive Type	S	S	S	S		Mattress - Innerspring 60" X 74"	S	S	S	-
	Wheel Simulators	S	S	S	S		Mattress - Innerspring 60" x 80"	-	-	-	S
	Wipers - Wet Arm Windshield Wipers with Intermittent	S	S	S	S		Pillows - Coordinated Pillows for Living Area	O	O	O	O
							Seats - Reclining Driver's and Passenger's Swivel Bucket Seats	S	S	S	S
<b>CONSTRUCTION</b>							Sofa - Jackknife Sofa	-	S	-	-
	Floor - Vacuum Bonded Steel-Framed Insulated Floor Construction	S	S	S	S		Sofa - Jackknife Sofa in lieu of Cocktail Chairs	O	-	-	-
	Galvanized Luggage Compartments with Carpet Base	S	S	S	S		Table - Solid Oak Free Standing Table & Slat Back Chairs	-	-	O	O
	Gel Coat Fibreglass Front & Rear Masks	S	S	S	S						
	Roof - Domed EPDM Roof with Rain Gutters & Down Spouts	S	S	S	S		<b>GALLEY</b>				
	Sidewalls - Vacuum Bonded FRP "Filon" Sidewalls	S	S	S	S		Bi-fold Range Cover	S	S	S	S
	Steel Cab Floor, Firewall & Dash Structure	S	S	S	S		Coffee Maker	O	O	O	O
	Vacuum Bonded Aluminium-Framed Insulated Roof & Wall Construction	S	S	S	S		Convection Microwave - OTR with Light and 110 V Vent Fan with Cook Top & Drawers	-	O	-	-
	Windows - Tinted Radius Corner Windows	S	S	S	S		Cook Top - 3-Burner Stove Top with High Output Burner with Oven	S	S	S	S
<b>EXTERIOR</b>						<b>New</b>	Countertop - Oak-edged Laminate Counter with Acrylic Sink & Cutting Board Sink Cover	S	S	S	S
	Door - Screened Entry Door with Deadbolt Lock	S	S	S	S		Flooring - Vinyl Floor Covering in Galley & Entrance Area	S	S	S	S
	Exterior Assist Handle	S	S	S	S		Microwave - Over the Range with Light and Vent Fan	-	S	-	-
	Exterior Shower with Shut-off Valves for Winterizing	O	O	O	O		Microwave Oven	S	-	S	S
	Ladder - Roof Rack & Ladder	S	S	S	S	<b>New</b>	Range Hood - with Monitor Panel and Light	S	-	S	S
	Light - Porch Light	S	S	S	S		Refrigerator - Dometic LP/Electric 8 cu ft with Temperature Control	S	S	S	S
	Painted Skirts	O	O	O	O		Refrigerator Inserts - Oak Finished Raised Fridge Inserts	O	O	O	O
	Receptacle - Patio GFI Receptacle	S	S	S	S						
	Step - Electric Entry Step	S	S	S	S		<b>LAVATORY</b>				
	Storage - Extra Large Exterior Storage with Locking Flush Baggage Doors	S	S	S	S		Door - Folding Shower/Tub Door	S	-	-	-
							Fan - Power Bath Vent	S	S	S	S
							Flooring - Vinyl Floor Covering	S	S	S	S
							Shower - Neo-Angle Shower with Glass Doors	-	S	S	S
<b>New</b>							Skylight in Shower	S	S	S	S
							Toilet - Foot Flush	S	S	S	S

# FLOOR PLANS

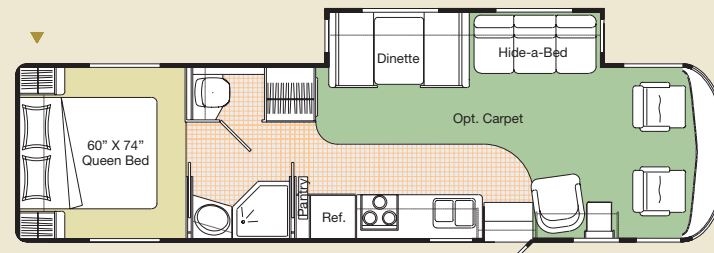
	A29	A30G	A34F	A36FB
<b>ENTERTAINMENT</b>				
CB Antenna - Includes Coax Lead under Dash	O	O	O	O
<b>New</b> DVD / VCR Combination Unit	O	O	O	O
<b>New</b> Pre-wire - Satellite Dish (with 12 V and 110 V Power) with Switch Box	O	O	O	O
<b>New</b> Satellite Dish - Wineguard with Electronic Elevation Sensor	O	O	O	O
<b>New</b> Stereo - Big Button AM/FM Cassette/CD in Dash Stereo - 80 W	O	O	O	O
Stereo - Big Button AM/FM CD in Dash Stereo - 80 W	S	S	S	S
Stereo - Big Button AM/FM CD Stereo with 6-Stack in Dash CD Changer - 80 W	O	O	O	O
Telephone and Cable TV Hook Up - Exterior	S	S	S	S
TV - AC 20" Colour Stereo with Remote in Bedroom	-	-	-	S
TV - AC 20" Colour Stereo with Remote in Dash	S	S	S	S
TV - DC 13" Colour with Remote in Oak Cabinet in Bedroom	O	O	O	-
TV Antenna - Roof Top Retractable with Booster	S	S	S	S
VCR - A/C Video Cassette Recorder	O	O	O	O
<b>HEATING, VENTILATION AND AIR CONDITIONING</b>				
Air Conditioner - 13,500 BTU with Heat Strip	O	O	O	O
Air Conditioner - 15,000 BTU with Heat Strip	O	O	O	O
Air Conditioning - Dual Ducted 2 x 13,500 BTU Roof Air w/ Selector Switch	-	-	O	O
Ducting - Ducted for Roof Air Conditioner	S	S	S	S
Furnace - Forced Air Furnace - 35,000 BTU	S	S	S	S
<b>ELECTRICAL</b>				
Converter - 120 V/12 V/55 Amp with Charger	S	S	S	S
Cord - Power Cord 30 Amp	S	S	S	S
<b>New</b> Generator - 4.0 KW Onan MicroQuiet	S	S	S	S
Generator Ready Package	S	S	S	S
<b>New</b> Plug - 12 V Power Plug in Dash	S	S	S	S
<b>New</b> Switch - Electronic Battery Disconnect (Coach Batteries)	S	S	S	S
<b>PLUMBING AND LP SYSTEMS</b>				
LP Tank - under Floor Mounted	S	S	S	S
Valve - Water Heater Bypass Valve	S	S	S	S
Water Heater - Electronic Ignition LP/Electric	S	S	S	S
<b>SYSTEMS</b>				
Rearview Camera/Monitor - B&W	S	S	S	S
Factory PDI	O	O	O	O
<b>OPTIONAL AWNING PACKAGES</b>				
<b>New</b> Awning - A&E 8500 Patio Awning - Vinyl (Length Shown)	15	16	18	18
Awning - A&E Deluxe Slide Toppers (Number of Awnings Shown)	-	1	1	2
<b>New</b> Awning - Weathershield Equipped A&E Elite 9000 Patio Acrylic (Length Shown)	15	16	18	18
Awning - Weathershield Equipped A&E Elite Slide Toppers (Number of Awnings Shown)	-	1	1	2
<b>SPECIAL OPTION PACKAGE(S)</b>				
<b>XL PACKAGE INCLUDES:</b>	O	O	O	O
Holding Tanks Enclosed, Insulated & Heated				
Light Package in Baggage Compartment				
Rear Auxiliary Heater				
Thermal Pane Windows				



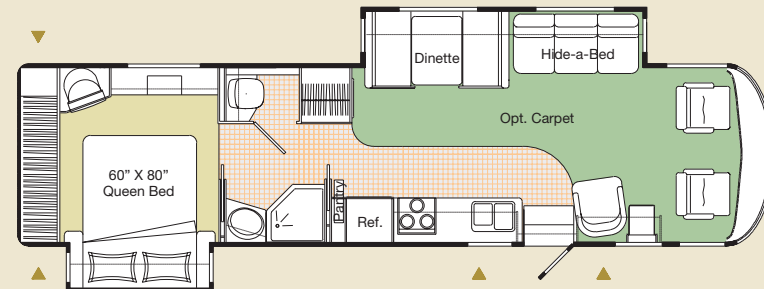
A29



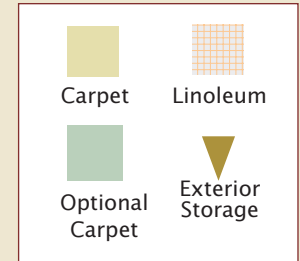
A30G



A34F



A36FB



Product improvement is a continuing process at Triple E Recreational Vehicles. Thus we reserve the right to change specifications on any or all products without prior notice; errors and omissions excepted. Triple E Recreational Vehicles is under no obligation to undertake modification to units manufactured prior to changes on specifications.

NOTE: Please see your dealer for weights of factory installed options.





# EMBASSY DIESEL

## *New Memories Await*

Headed for the gulf or to golf?

Visiting the sun or your son?

No matter the destination, the  
journey will be one to remember.

A35FW shown with Lapis Blue Décor >>





## Miles of Smiles

Raise the bar on your travels. The 2004 Embassy Diesel is covering new ground. With impressive features and a stylish new look, this motorhome constantly turns heads wherever it goes.

Life on the road just doesn't get any better than the Embassy Diesel. Adding on to the list of standard features which include air conditioning and an electric entry step, you are able to add functional options including:

- Satellite dish
- Exterior shower
- Refreshment centre cabinet
- DVD/VCR combination unit
- Chrome cockpit ventilating fans
- Air horns
- Painted skirts & baggage doors
- CB antenna
- Washer/dryer



Visit [www.tripleerv.com](http://www.tripleerv.com) for more photos of the Embassy Diesel.

- 1 *The neo-angle shower with glass doors comes with an overhead skylight.*
- 2 *Spacious wardrobes allow you to store more clothing for a variety of occasions.*
- 3 *Driver and passenger seats swivel for additional seating in the living area.*
- 4 *The large exterior storage compartment is fitted with flush, locking aluminium baggage doors.*
- 5 *Built into the stylish front fibreglass mask is a retractable 6.5 KW propane generator.*



# STANDARDS AND OPTIONS – EMBASSY DIESEL

S = Standard    O = Option	A35FW			A35FW
<b>VEHICULAR</b>			<b>INTERIOR</b>	
Air Brakes - with Automatic Slack Adjusters	S		Bedspread - Decorative Bedspread and Throw Pillows	S
Air Conditioner - Chassis	S		Cabinetry - Oak Finish Cabinet Face Framing	S
Air Horns	O		Ceiling - Domed with Automotive "Soft Touch" Headliner	S
Air Suspension - with Tuned Sachs Shocks	S		Detectors - Electronic Smoke, LP & CO	S
Alternator 130 Amp	S		Doors - Solid Oak Raised Panel Cabinet Doors	S
Block Heater (750 W)	S		Drawers - Dual Roller Glide Drawers with Travel Lock	S
Bumper - Integrated Steel Reinforced Fibreglass Bumpers	S		Fire Extinguisher - Dry Chemical	S
Chassis - Freightliner XC with Cummins 300 HP Turbo Diesel 24,850 LB GVW 208" Wheelbase Straight Rail	S		Flooring - Wall to Wall Carpeting in Living & Bedroom Areas	S
Cruise Control	S		Latches - Snap Latches on Galley, Lavatory Overhead Cabinets & Large Wardrobe Doors	S
Exhaust Brake - Cummins Exhaust Brake Integral with Turbo	S		Pillows - Coordinated Pillows for Living Area	O
Fans - Chrome Cockpit Ventilating with Dash Switch	O		Shades - Pleated	S
Fuel Fill - Concealed Locking Fuel Fill Access on both Sides	S		Slide-out - Wardrobe Slide in Bedroom	S
Headlights - Halogen Styled	S		Storage - Easy under Bed Storage & Engine Access with Gas Struts	S
Hitch - Trailer Hitch Receiver with Wiring and Plug - Class III	S			
Jacks - HWH Touch Pad Control Levelling System with Manual Air Dump	S		<b>FURNITURE</b>	
Light - High Mounted Stoplight – LED Long Life	S		Booth Dinette - with under Seat Storage	S
Rust Protection	O		Chair - Cloth Swivel Cocktail on Passenger's Side with Solid Oak Flip Table	S
Slide-out - HWH Hydraulic Slide-out System	S		Hide-a-Bed - Cloth Hide-a-Bed on Driver's Side	S
Steering Wheel - Tilt/Telescopic	S		Mattress - Air Coil Mattress Upgrade on Hide-a-Bed (with 110 V Air Pump)	O
Switch - Battery Boost Switch (Coach to Chassis Batteries)	S		Mattress - Residential Quality Queen (60" x 80")	S
Switch - Battery Selector Switch for Radio	S		Mattress - Upgrade	O
Tires - Michelin Radial - 235/80R22.5 LRG XRV	S		Seats - Reclining Driver's and Passenger's Swivel Bucket Seats	S
Transmission - Allison 2000 MH 5-Speed Automatic with Lock Up & Electronic Shift Pads	S		Table - Solid Oak Free Standing Table & Slat Back Chairs	O
Transmission Cooler	S			
Undercoating - Automotive Type	S		<b>GALLEY</b>	
Wheel Simulators	S		Bi-fold Range Cover	S
Wipers - Wet Arm Windshield Wipers with Intermittent	S		Coffee Maker	O
			Convection Microwave - OTR with Light and 110 V Vent Fan with Cook Top and Drawers	O
<b>CONSTRUCTION</b>			Cook Top - 3-Burner Stove Top with High Output Burner & Oven	S
Baggage Compartments - Lined Floor	S		Countertop - Laminate Counter with Acrylic Sink & Cutting Board Sink Cover	S
Baggage Doors - Aluminium Baggage Doors with Gas Struts & Slam Latch	S		Flooring - Linoleum in Galley	S
Gelcoat Fibreglass Molded Front & Rear Mask	S		Flooring - Wood-look Laminate Flooring in Galley in lieu of Linoleum	O
Roof - Domed EPDM Rubber Roof	S		Microwave - OTR with Light & 110 V Vent Fan	S
Steel Cab Floor, Firewall & Dash Structure	S		Refrigerator - Dometic LP/Electric 8 cu ft w/ Temperature Control	S
Vacuum Bonded Aluminium-Framed Insulated Sidewall & Roof Construction	S		Refrigerator Inserts - Oak Finished Raised Fridge Inserts	O
Vacuum Bonded FRP Sidewalls	S		Stainless Steel Sink	S
Vacuum Bonded Steel-Framed Insulated Floor Construction	S			
Windows - Tinted Radius Corner Windows	S		<b>LAVATORY</b>	
			Cabinet - Oak Finish Medicine Cabinet with Mirror	S
<b>EXTERIOR</b>			Fan - Power Vent Fan in Bathroom	S
Door - Screened Entry Door with Deadbolt Lock	S		Neo-Angle Shower - with Folding Door	S
Exterior Shower	O		Skylight - Shower Compartment	S
Handle - Exterior Assist Handle	S		Toilet - Foot Flush	S
Ladder - Exterior Ladder with Detachable Lower Section	S			
Light - Porch Light	S		<b>ENTERTAINMENT</b>	
Lights - Rear Docking Lights	S		CB Antenna - Includes Coax Lead under Dash	O
Painted Skirts	O		DVD / VCR Combination Unit	O
Step - Electric Retractable Entry Step	S		Prewire - for AC & DC Bedroom TV	S
			Prewire - Satellite Dish (with 12 V Power & 110 V)	O
			Satellite Dish - Wineguard with Electronic Elevation Sensor	O
			Stereo - AM/FM Cassette/CD - 80 W	O
			Stereo - Big Button AM/FM CD in Dash Stereo - 80 W	S



# FLOOR PLAN

A35FW

Stereo - Big Button AM/FM Stereo with 6-Stack in Dash CD Changer - 80 W	O
Telephone and Cable TV Hook Up - Exterior	S
TV - AC 20" Colour Stereo TV with Remote in Overhead Cabinet	S
TV - DC 13" Colour TV with Remote in Oak Cabinet in Bedroom	O
TV Antenna - Roof Top Retractable Antenna with Booster	S
VCR - AC Video Cassette Recorder	O

## HEATING, VENTILATION AND AIR CONDITIONING

Air Conditioner - Dual Ducted (2) 13,500 BTU with Heat Strip	O
Air Conditioner - Ducted 13,500 BTU with Heat Strip	S
Fan - Thermostatically Controlled Fan in Bedroom	O
Fan - Thermostatically Controlled Fan in Living Area	O
Furnace - Two Forced Air Furnaces - 25,000 BTU	S

## ELECTRICAL

Batteries - Deep Cycle Coach Batteries - 2 x 12 V	S
Bi-directional Isolator Relay Delay (BIRD) Battery Charging	S
Generator - 6.5 KW Onan Liquid LP Gas Marquis on Slide-out Tray	S
Panel - 50 Amp Electrical Service with Energy Management System	S
Pre-wire - for Solar Panel	O
Switch - Electronic Battery Disconnect (Coach Batteries)	S

## PLUMBING AND LP SYSTEMS

Black Tank Flush System	S
Holding Tanks - Enclosed Waste Holding Tanks	S
LP Tank - Easy Access Propane Tank	S
Rough in for Washer/Dryer	S
Systems Monitor Panel	S
Valve - Water Heater By-Pass	S
Water Heater - Electronic Ignition LP/Electric Water Heater (10 gal.)	S
Water Tank - Enclosed Fresh Water Tank	S
Water Tank Fill & Bleach Port	S
Winterization System with Pick Up Kit	S

## SYSTEMS

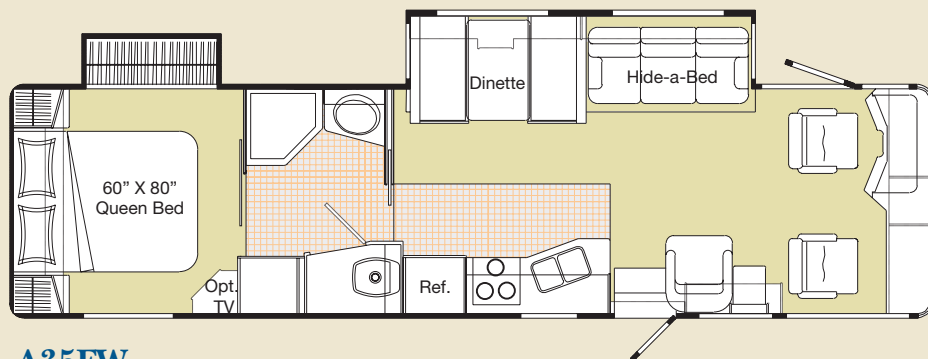
Rearview Camera/Monitor - B&W	S
Washer/Dryer (vented)	O
Factory P.D.I.	O

## OPTIONAL AWNING PACKAGES

Awning - A&E 8500 Patio Awning - Vinyl (Length Shown)	18
Awning - A&E Deluxe Plus Window Awnings (Number Shown)	2
Awning - A&E Deluxe Side Topper Awning (Number Shown)	2
Awning - Weathershield Equipped A&E Elite 9000 Patio - Acrylic (Length Shown)	18
Awning - Weathershield Equipped A&E Elite Slide Topper (Number Shown)	2
Awning - Elite Window Awning (Number Shown)	2

## SPECIAL OPTION PACKAGE(S)

<b>XL PACKAGE INCLUDES:</b>	O
Holding Tanks Enclosed, Insulated and Heated	
Light Package in Baggage Compartment	
Rear Auxiliary Heater	
Thermal Pane Windows	



A35FW

Product improvement is a continuing process at Triple E Recreational Vehicles. Thus we reserve the right to change specifications on any or all products without prior notice; errors and omissions excepted. Triple E Recreational Vehicles is under no obligation to undertake modification to units manufactured prior to changes on specifications.

*NOTE: Please see your dealer for weights of factory installed options.*



# GOOD LOOKS

You are able to customize your motorhome with one of four distinct interior design schemes. Developed by a group of professionals, our combinations skillfully coordinate upholstery, carpeting, window treatments, and exterior graphics in a manner that is both especially pleasing to the eye and of uncompromising quality.

Visit [www.tripleerv.com](http://www.tripleerv.com) for more information on the Embassy's features.



The Embassy is equipped with Filon Filoplated smooth exterior sidewalls. Extremely dent and weather resistant, these panels will keep your motorhome looking its best for years to come.



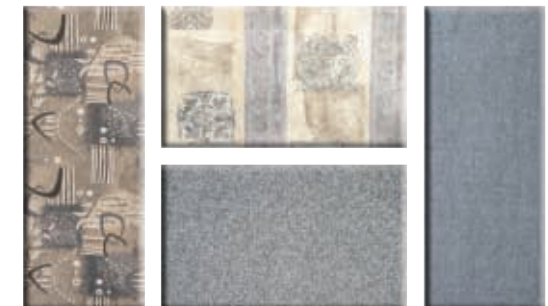
Raised solid oak cabinet doors and drawer fronts are both beautiful and durable.



Pebble Beach



Enchanted Forest



Lapis Blue



Mulberry Grove

Colours may not be exactly as shown due to the printing process. Please see your dealer for specific colours.



# SPECIFICATIONS AND FEATURES



EMBASSY 2004	A29	A30G	A34F	A36FB	EMBASSY DIESEL 2004	A35FW
GVWR - lbs (kg)	18,000 (8,164)	18,000 (8,164)	20,500 (9,298)	22,000 (10,000)	GVWR - lbs (kg)	26,350 (11,952)
UVW - lbs (kg)	12,838 (5,823)	13,889 (6,300)	15,166 (6,879)	16,334 (7,418)	UVW - lbs (kg)	18,918 (8,581)
NCC - lbs (kg)	5,162 (2,341)	4,111 (1,864)	5,334 (2,419)	5,666 (2,573)	NCC - lbs (kg)	7,432 (3,371)
Wheelbase - in (mm)	190 (4,826)	190 (4,826)	228 (5,791)	228 (5,791)	Wheelbase - in (mm)	208" (5,283)
Length (not incl. spare) - ft (mm)	29'3" (8,915)	30'8" (9,345)	34'2" (10,425)	35'9" (10,910)	Length - ft (mm)	35'1" (10,693)
Width - ft (mm)	8'4" (2,534)	8'4" (2,534)	8'4" (2,534)	8'4" (2,534)	Width - ft (mm)	8'4" (2,534)
Height (incl. A/C) - ft (mm)	11'3" (3,428)	11'3" (3,428)	11'3" (3,428)	11'3" (3,428)	Height (incl. A/C) - ft (mm)	11'10" (3,607)
Water Tank Cap. (incl. w/h) gal (l)	76 (285)	76 (285)	76 (285)	76 (285)	*Water Tank Cap. - gal (l)	88 (333)
Holding Tank Cap. - gal (l)	78 (295)	78 (295)	78 (295)	78 (295)	Black Holding Tank Cap. - gal (l)	43 (158.8)
Fuel Cap. - gal (l)	75 (284)	75 (284)	75 (284)	75 (284)	Grey Holding Tank Cap. - gal (l)	39 (147.4)
Propane Cap. - gal (l)	25.3 (95.8)	25.3 (95.8)	25.3 (95.8)	25.3 (95.8)	Fuel Cap. - gal (l)	90 (341)
					Propane Cap. - gal (l)	25.3 (95.8)
					*Includes 10 gallon water heater	NOTE: All capacities in U.S. gallons

## GVWR

GROSS VEHICLE WEIGHT RATING means the maximum permissible weight of this motorhome. The GVWR is equal to or greater than the sum of the unloaded vehicle weight (UVW) plus the net carrying capacity (NCC).

## UVW

UNLOADED VEHICLE WEIGHT means the weight of the motorhome as built at the factory with full fuel, engine oil, and coolants. The UVW does not include cargo, fresh water, LP gas, occupants, factory or dealer installed accessories.

## NCC

NET CARRYING CAPACITY means the maximum weight of all occupants, including the driver, personal belongings, food, fresh water, LP gas, tools, tongue weight of towed vehicle, factory and dealer installed accessories, etc., that can be carried by this motorhome. (NCC is equal to or less than GVWR minus UVW.)

# TRIPLE E QUALITY



## Unparalleled craftsmanship



Triple E is located in the centre of Canada – in one of the most extreme climates in North America. Customers can thus be confident that our optional

XL package, designed to comfortably extend the RV season, has truly been put to the test.

Much of what you see in our products is built on site to our highest standards. In our plant you'll find an impressive, progressive production facility complete with welding shop, paint shop, fibreglass and mold shop, sewing department, and cabinet manufacturing department.

Structural integrity and

durability are critical in every unit we produce – to the smallest of details. For example, cabinetry is constructed



with screws rather than staples. It's the little things that make a big difference.

All Triple E products are built to CSA (Canadian Standards Association) or

RVIA (Recreational Vehicle Industry Association) Standards. Triple E was one of the first RV manufacturers to obtain the ISO 9002 certification – your assurance of the careful construction and high quality materials that are part and parcel of every Triple E unit.



Triple E is proud to offer a  
**2 YEAR LIMITED WARRANTY**  
on structure as well as most major components.  
Please see your dealer for further details.

ISO 9002  
REGISTERED



This combination of labels assures the purchaser that the manufacturer has met or surpassed CSA-CRVA-RVIA standards covering electrical services, gas services, plumbing services, and vehicular safety.

Embassy Motorhomes exceed 96 inches in width. In some states, 96 inches is the maximum width of vehicles travelling some or all state roads. It is the responsibility of the owner to be familiar with the road usage laws of the states in which you travel.

## COACH NET

Triple E is a proud partner of Coach Net, an extensive support program providing complete and fully paid roadside assistance, emergency road service, and special warranty support benefits that follow you throughout Canada and the US. Service is free for the first year of ownership and available at a nominal fee for subsequent years.

Coach Net's 24-hour Customer Care includes:

- Emergency roadside assistance - including tow vehicle
- Toll free technician hotline for operation and service support
- Toll free nationwide service appointment assistance
- Free custom trip routing and colour maps
- Warranty service at over 6,800 locations throughout North America
- Benefits such as free jump starts, tire changes, fuel delivery, and lock out service

Brochure pictures may be shown with optional equipment.



Full of possibilities. Full of life. View the entire family of Triple E products at [www.tripleerv.com](http://www.tripleerv.com).



P.O. Box 1230, Winkler, MB  
Canada R6W 4C4  
Tel: (204) 325-4361  
Fax: (204) 325-5241  
[www.tripleerv.com](http://www.tripleerv.com)

TAKE FREEDOM *Further*