

# SUNNYBROOK RV



**Sunny Brook**

2001 TRAVEL & FIFTH WHEEL TRAILERS

**MOBILE SCOUT™**

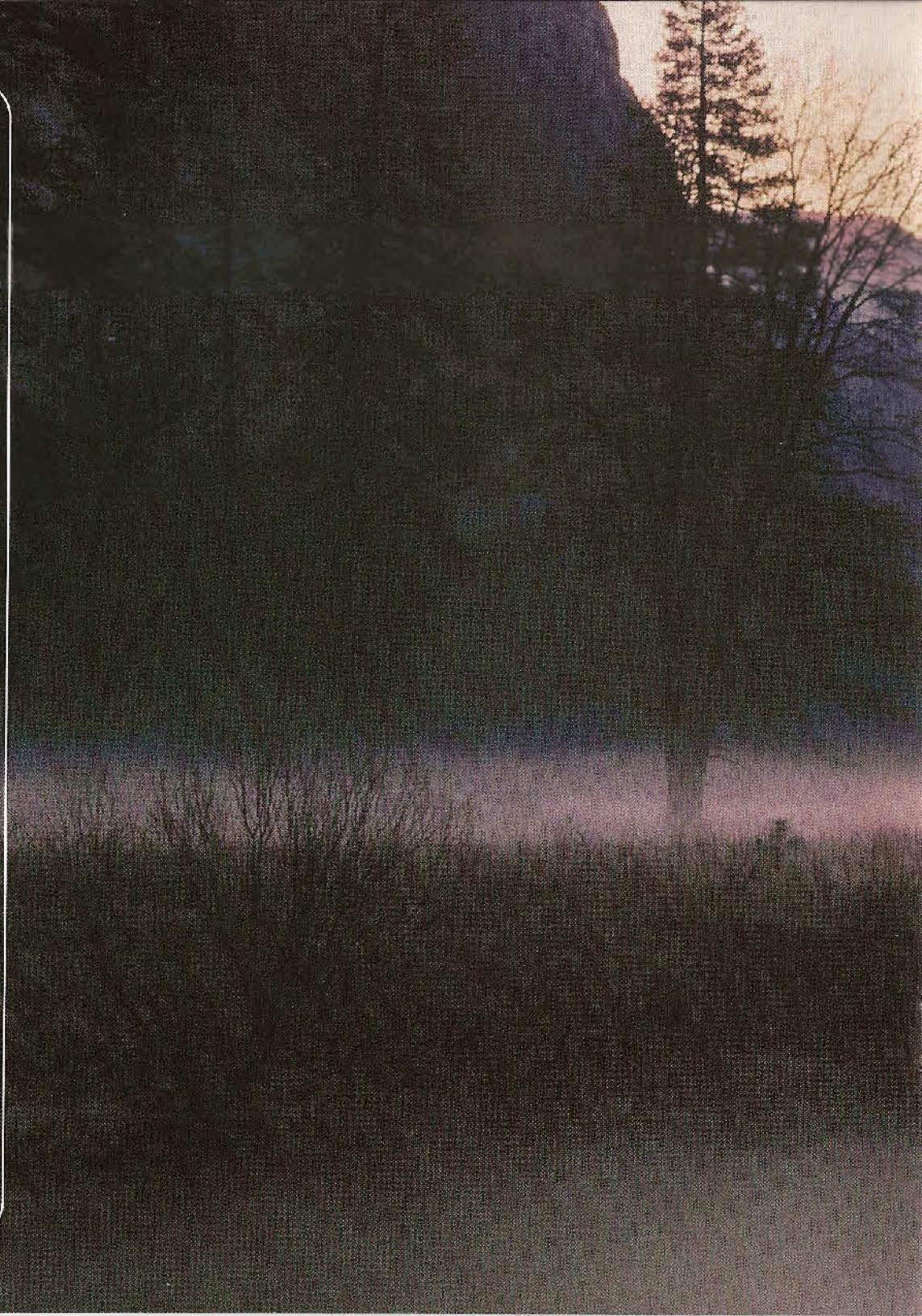
BY SUNNYBROOK

Go RVing.™



## A BETTER PLACE

Travel down that road to adventure with complete peace-of-mind. It's easier when you have a SunnyBrook or Mobile Scout recreational vehicle behind you. Travel and fifth wheel trailers featuring an industry-famous aluminum superstructure have set us apart for years. And at SunnyBrook RV, we know you want the best quality-built, feature-packed, luxuriously-appointed product for the money. Our heritage springs from a lifetime of camping and RV manufacturing experience. You'll find SunnyBrook's principals and associates alike camping in these trailers most weekends throughout the year. So it's no wonder SunnyBrook and Mobile Scout are the most talked-about trailers with the seasoned, second-time RV buyers. Experience the difference today. But don't just take our word for it—ask the thousands of satisfied owners, many of whom attend our industry-leading camper club rallies. Or find your own serenity in a place where only a SunnyBrook or Mobile Scout can take you.













# GET AWAY



## GEL-COAT EXTERIOR

Sidewalls and end caps will look as good as they're designed and built when you choose this quality looking, lower maintenance exterior option.



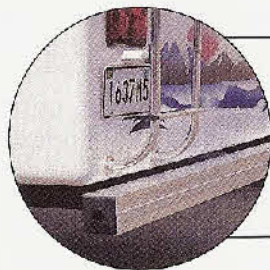
## BAY WINDOWS

Models featuring a unique bay window rear area integrates viewing into this fiberglass gel-coat end cap design.



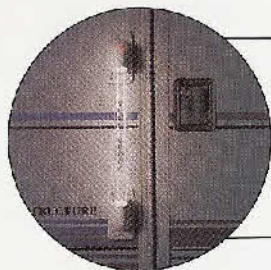
## SOLID TIRE COVER

A solid dish tire cover with stainless steel ring is a great looking (and customizable) upgrade option many RVers have come to appreciate over the years.



## BUMPER COVER

This aluminum bumper cover is standard and not only looks great, but protects the surface when it needs it. Another SunnyBrook RV detail difference.



## LIGHTED GRAB BAR

Our standard, lighted grab bar makes entering and exiting your trailer, especially at night, safer and easy. For a complete list of options, see details on page 17.



## ALUMINUM WHEELS

This option is worth it. Make your trailer look great and last longer for higher resale when you choose quality aluminum wheels from SunnyBrook RV.

This is where the years of hard work pay off. And, at SunnyBrook RV, we want to make your experience as relaxing and enjoyable as possible. We begin with our famous light-aluminum Superstructure, an exclusive all-aluminum frame construction, designed to make towing easier and extend the life of your trailer. Then we added better designs, materials and workmanship—all for the purpose



of doing it right. Features and amenities abound as well. Big storage spaces like our innovative Sunny-Stor® and convenient Sunny-Seat™ repositionable dinette sofa are industry firsts. Plus options such as gel-coat fiberglass exteriors keep maintenance to a minimum. Every inch of trailer, inside and out, is built using good old-fashioned common sense. You know, the way you'd do it.



## FIFTH WHEEL FLOORPLANS

SunnyBrook and Mobile Scout models and floorplan options have been tested by professional RVers throughout the country.



## TRAVEL TRAILER FLOORPLANS

It's easy to find a travel trailer model or floorplan option among this industry-leading, wide selection of configurations.







# COMFORT

## OVERHEAD CABINETS

Standard overhead cabinetry in slide rooms offers additional storage and features solid oak cabinet doors. Beautiful oak hardwood trim around slide room is standard as well.

## LAMBREQUINS

Lambrequins are tasteful window trim that adds to the beautiful decor of your trailer. They are standard in living and dining room areas. Blinds are standard, too.

## WASTE BASKET

This pull-out waste basket is standard in kitchens of most models. It's hidden within the cabinetry. Little details continues to set SunnyBrook RV apart!

## VCR COMPARTMENT

Bring your VCR along for reviewing family memories. And put it in this custom wood compartment console. Another great storage idea making a difference.

## FLUSH SLIDE-OUT FLOOR

SunnyBrook RV's unique slide-out rooms come with flush (flat) floors. They are safe and make rooms appear to be as large and spacious as they really are.

## GLASS SHOWER DOOR OPTION

All models are available with an optional glass shower door. It adds brightness, beauty and a sense of space to your bathroom.

## COLORFUL INTERIOR DECOR

Furniture fabric, carpeting, drapes and accents are tastefully designed and made from only the finest, most durable materials. From left to right are our four distinct, standard colors: Teal, Sandstone, Blue and Mauve with Sandstone in optional interior SB package shown.

Pamper you and yours with the finer things. Now you can in a SunnyBrook and Mobile Scout. We load them up with luxuriously-appointed rooms full of top brand name appliances, quality materials, spacious interior layouts, easy-to-access storage—all designed around your comfort. This is how you can get away without ever leaving home!



Our kitchens, living rooms, bedrooms and baths will make you feel at home as well. Inside each room are amenities that will far surpass your expectations of what a travel and fifth wheel trailer should deliver within this price category. Better value has always been a SunnyBrook RV trademark. All you really need to do is choose a color, and your favorite destination.









# PRECISION



## BETTER INSULATION

Trailers are kept insulated with thick R7 & 11 batten. SunnyBrook RV has a state-of-the-art facility built for the sole purpose of creating a quality workplace.



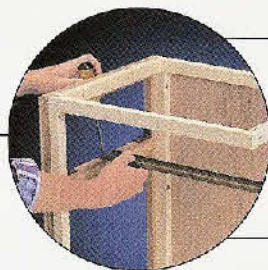
## ROOF DESIGN

Aluminum roof trusses are integrated with sidewalls and feature a unique ducting system through bridge-truss style roof bows. A stronger trailer and design is the result.



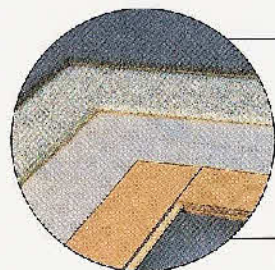
## HOLDING TANKS

Enclosed and heated holding tanks come with easy-access dump valves. This holding tank design is standard on some models. See page 17 for details.



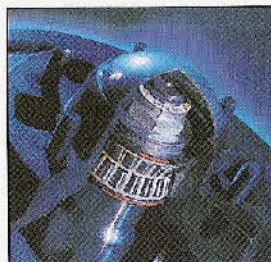
## POPLAR HARDWOODS

All interior cabinetry and framing is constructed of poplar hardwood, not soft pine. Hidden details like this are never excuses for shortcuts at SunnyBrook RV.



## SOLID FLOOR DESIGN

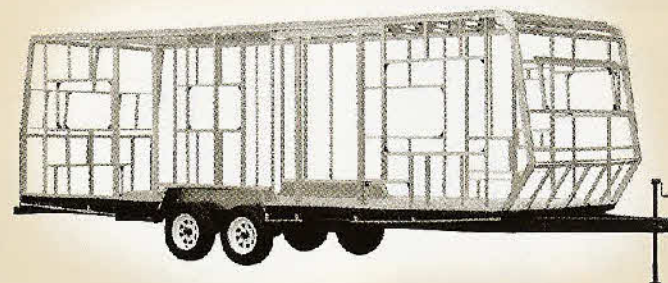
Thick floor construction includes 28-oz. nylon carpet with rebond pad, residential vinyl Congoleum and 5/8 inch tongue-and-groove exterior grade plywood underneath.



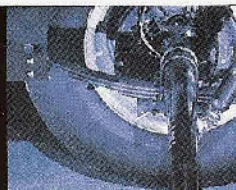
## NO-MAINTENANCE AXLE/HUB

New Dexter® Nev-R-Lube sealed-bearing axles require no greasing or maintenance. You just worry about relaxing with a SunnyBrook RV trailer.

SunnyBrook's and Mobile Scout's haven't been around for ages, but if you listen to one of our thousands of proud owners, you'd think we have. It's because of experience. The owners and seasoned work force at SunnyBrook RV have been designing and building camping trailers for decades. And our famous, exclusive light-aluminum Superstructure continues to be the envy of the industry.

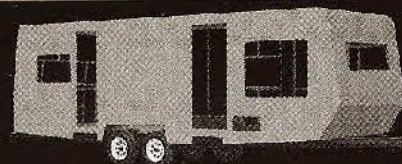


It's a unique trailer concept because we screw and bond each aluminum frame and roof member together similar to the way an aircraft is made. The trailer's ability to flex means it will last longer. Lighter weight is also achieved thanks to an integrated aluminum roof, floor and sidewall system. Better materials, construction methods, brand name appliances and support after the sale add value as well.



## JAKE PLATE

Fifth wheels come with a standard, welded Jake plate. This adjustment bracket system allows you to match trailer height with your tow vehicle's.



## FULL WRAP FOME-COR® EXTERIOR

Better insulation continues with quality Fome-Cor panels. This insulation barrier helps keep your trailer cool in the summer and warmer on those cold mornings.



# FEATURES



## SUNNY-SEAT™ DINETTE FEATURE

Need more seating in the living area? Try our exclusive Sunny-Seat repositionable dinette sofa. It simply unlatches from the wall and can be moved on casters, giving you more seating options. Available on some models.



## SUNNY-STOR™

As pictured on page 4, Sunny-Stor is yet another SunnyBrook exclusive. It features an extra-deep storage compartment located underneath the bed. It is accessible from either inside or from the exterior rear (side on some models) and it's standard on most travel trailers.



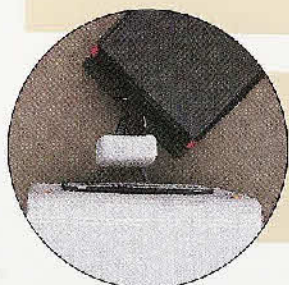
## FUNCTIONAL KITCHENS

When you step into a kitchen in a SunnyBrook or Mobile Scout trailer, you will notice more than beauty. Functional layouts with top name appliances and amenities garnish the landscape. Three-burner ranges with Piezo® ignitions, Dometic® Royale double door (optional) refrigerators, solid oak cabinet doors and trim, and optional interior upgrade packages are a few of the benefits of owning one of our trailers. And remember, a great kitchen helps sell a home at resale time.



## STRETCH-OUT COMFORT

Queen size beds with deluxe Pillow Top mattresses offer spacious comfort. A long list of convenience features adorn a SunnyBrook and Mobile Scout trailer. See the next few pages for floorplans and many more details.



## YOU'LL LOVE THE DIFFERENCES

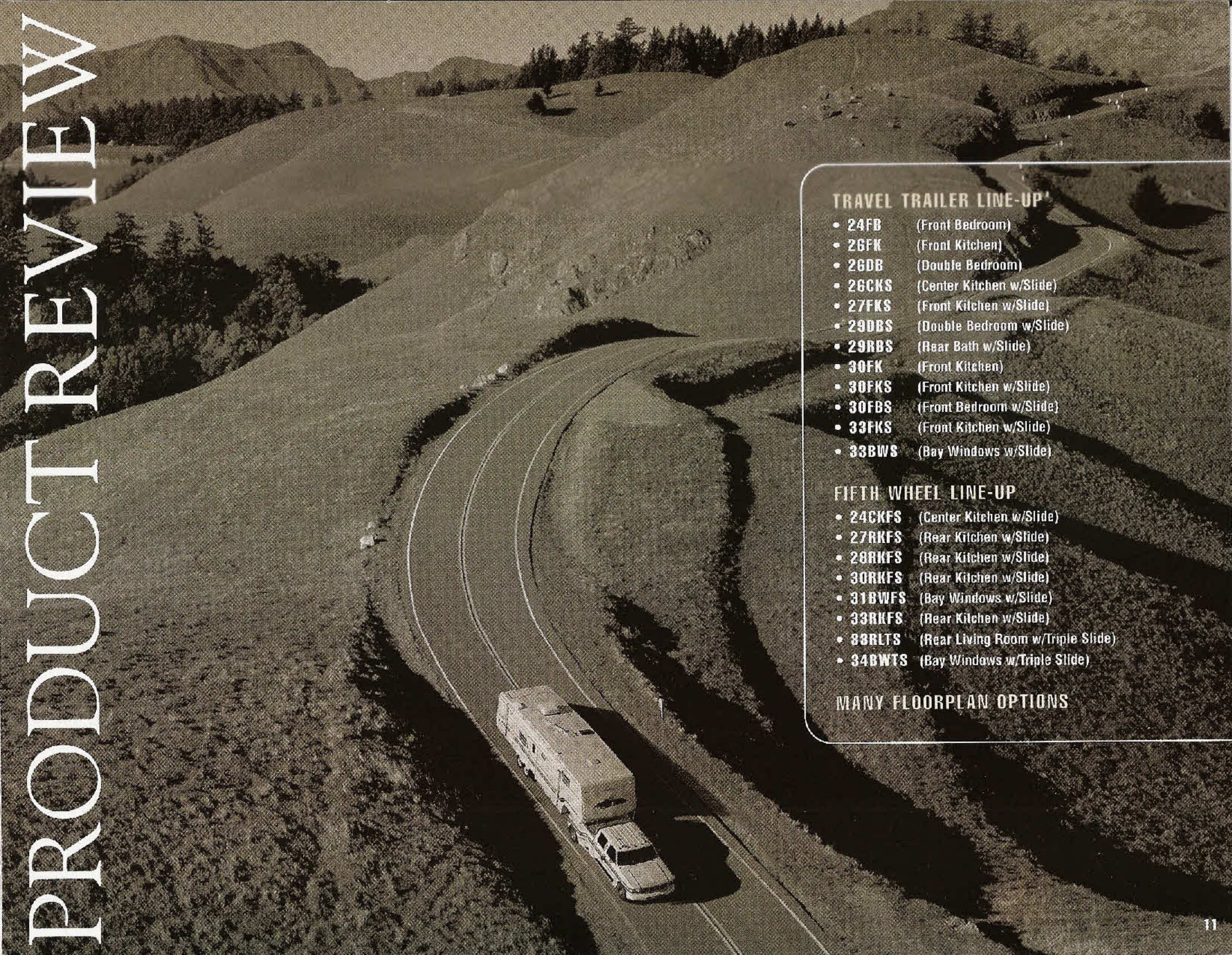
At SunnyBrook RV, we add longer tongue hitches to our travel trailers which allow for much improved turning radiuses. You may think it's a small feature, but you'll appreciate it in those tight trailer parks or turnpike rest stops.



## MODERN MANUFACTURING PLANT

And it's full of old-world craftsmen and women. The work force at SunnyBrook RV is made up of predominantly Amish tradesmen working in our 140,000 square-foot purpose-built facility right here in the heartland of America.





# PRODUCT REVIEW

## TRAVEL TRAILER LINE-UP

- **24FB** (Front Bedroom)
- **26FK** (Front Kitchen)
- **26DB** (Double Bedroom)
- **26CKS** (Center Kitchen w/Slide)
- **27FKS** (Front Kitchen w/Slide)
- **29DBS** (Double Bedroom w/Slide)
- **29RBS** (Rear Bath w/Slide)
- **30FK** (Front Kitchen)
- **30FKS** (Front Kitchen w/Slide)
- **30FBS** (Front Bedroom w/Slide)
- **33FKS** (Front Kitchen w/Slide)
- **33BWS** (Bay Windows w/Slide)

## FIFTH WHEEL LINE-UP

- **24CKFS** (Center Kitchen w/Slide)
- **27RKFS** (Rear Kitchen w/Slide)
- **28RKFS** (Rear Kitchen w/Slide)
- **30RKFS** (Rear Kitchen w/Slide)
- **31BWFS** (Bay Windows w/Slide)
- **33RKFS** (Rear Kitchen w/Slide)
- **33RLTS** (Rear Living Room w/Triple Slide)
- **34BWTS** (Bay Windows w/Triple Slide)

## MANY FLOORPLAN OPTIONS



# TRAVEL TRAILERS

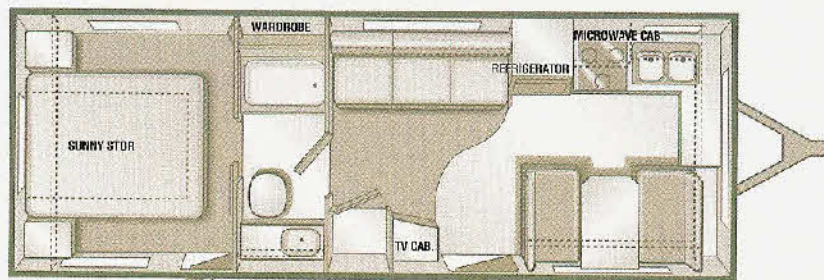
Dotted lines represent overhead cabinetry or storage.



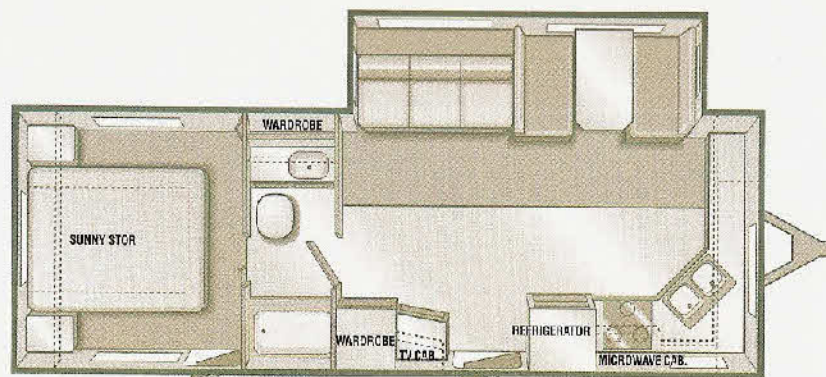
Available with Options C and N **24FB**



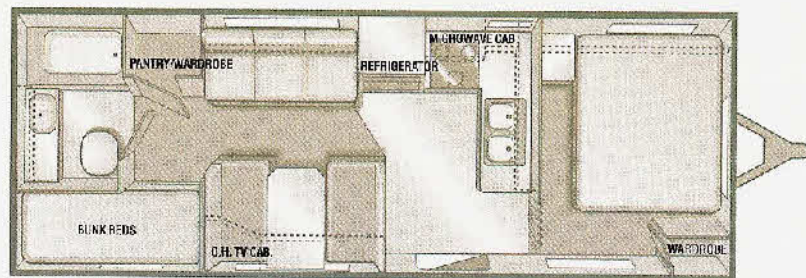
Available with Options A, F and N **28CKS**



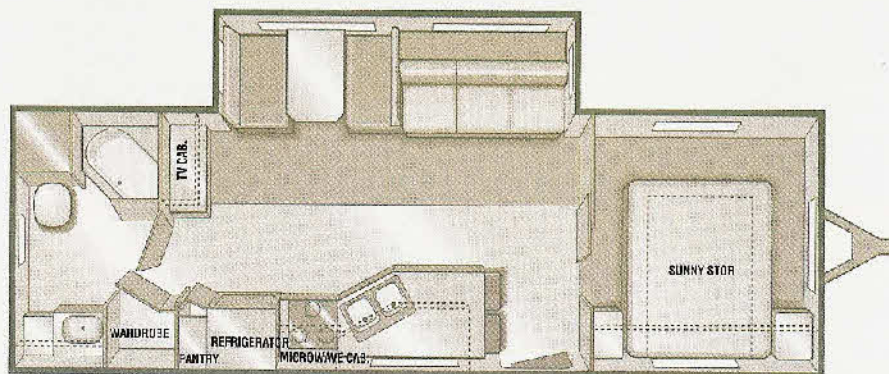
Available with Options A, H, M and N **28FK**



Available with Options A, F and N **27FKS**



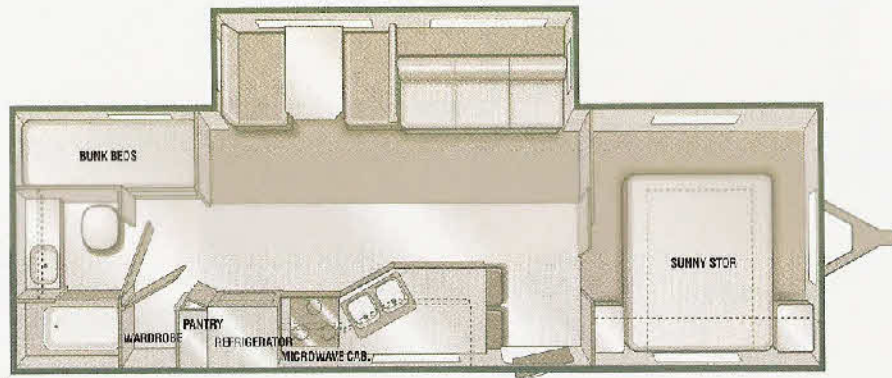
Available with Option N **26DB**



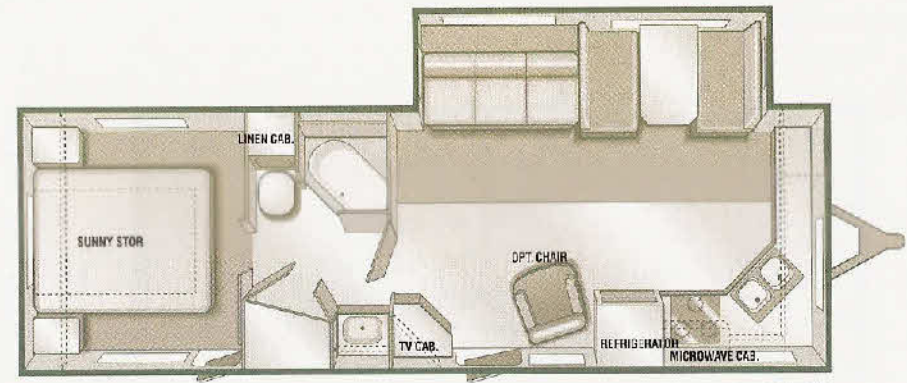
Available with Options C, E, F, O and R **29RBS**

If you can't find a travel trailer floorplan here, look at the options on page 15 that will help you truly customize a layout to your exact needs. SunnyBrook and Mobile Scout trailers are designed around previous RV buyer's requests. 'User-friendly' adds to the warmth of every model we make.

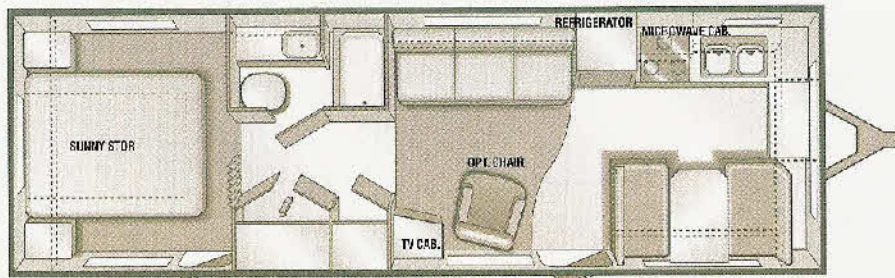




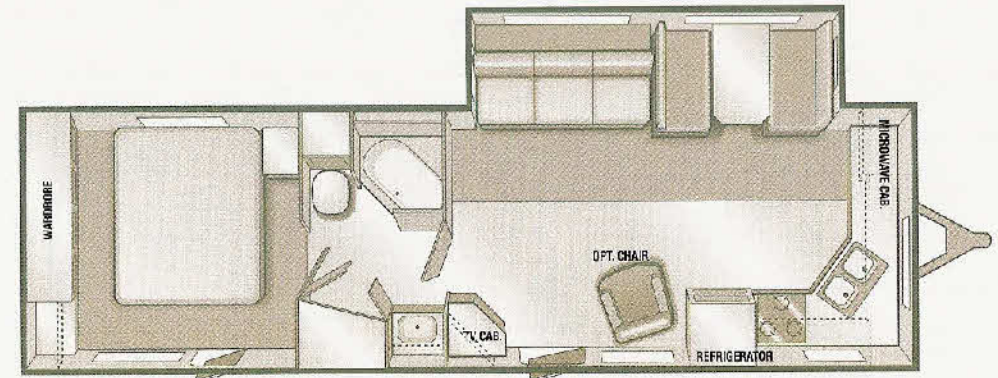
Available with Options C, F, N and R **29DBS**



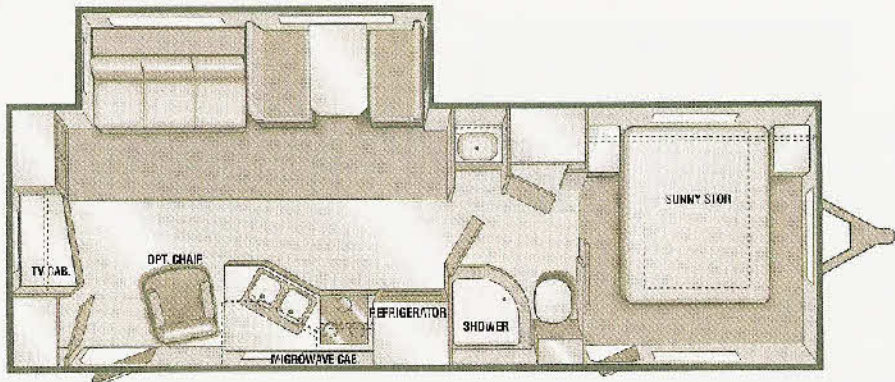
Available with Options A, E, F and O **30FKS**



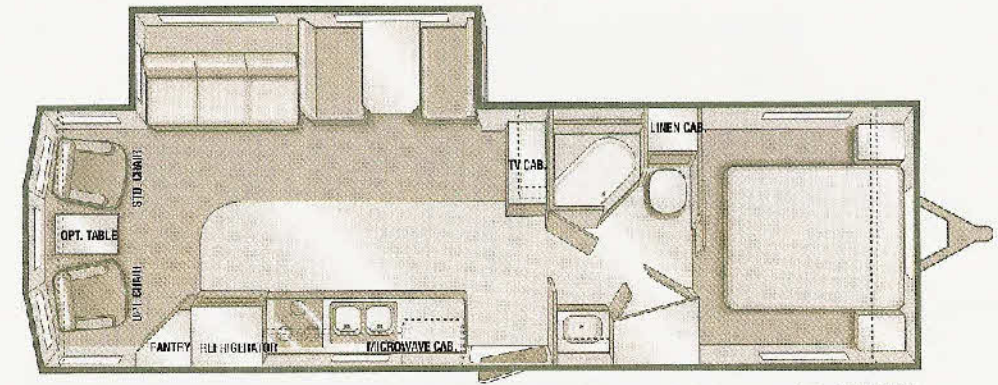
Available with Options A, B, E, H, M, N and O **30FK**



Available with Options E, F, J, K, L1 and O **33FKS**



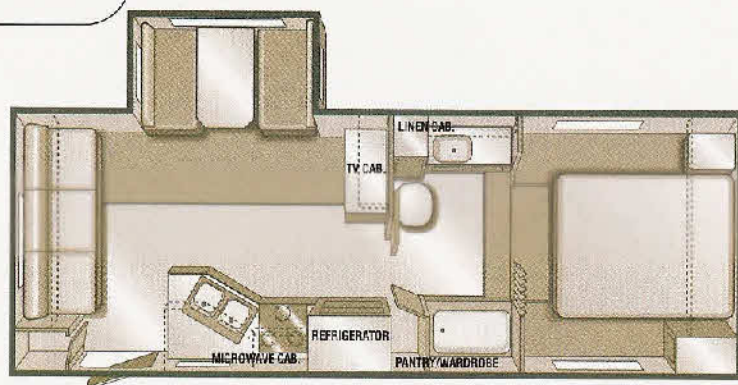
Available with Options C and F **30FBS**



Available with Options C, E, F and O **33BWS**



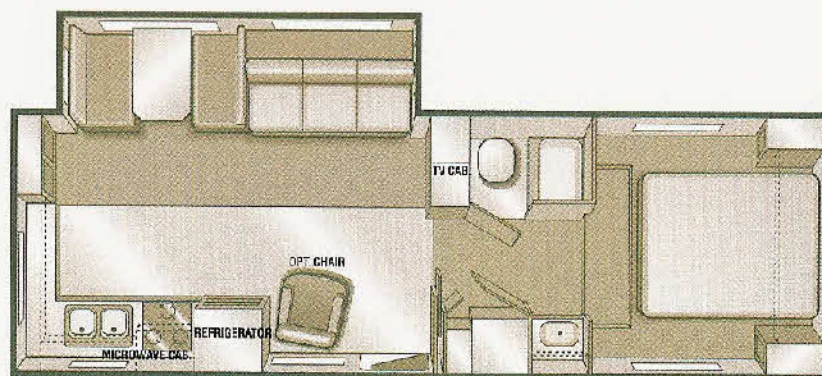
# FIFTH WHEELS



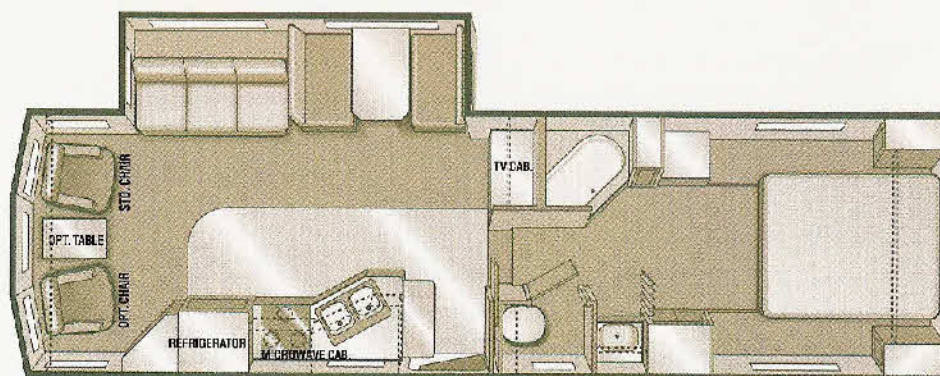
Available with Options D, F and N **24CKFS**



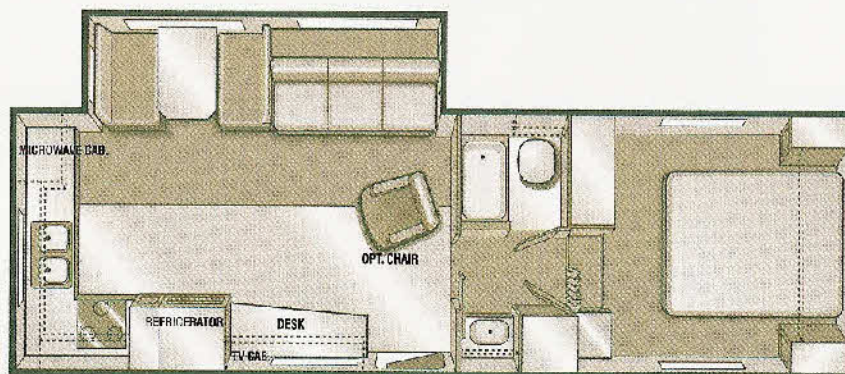
Available with Options D, E, F and O **30RKFS**



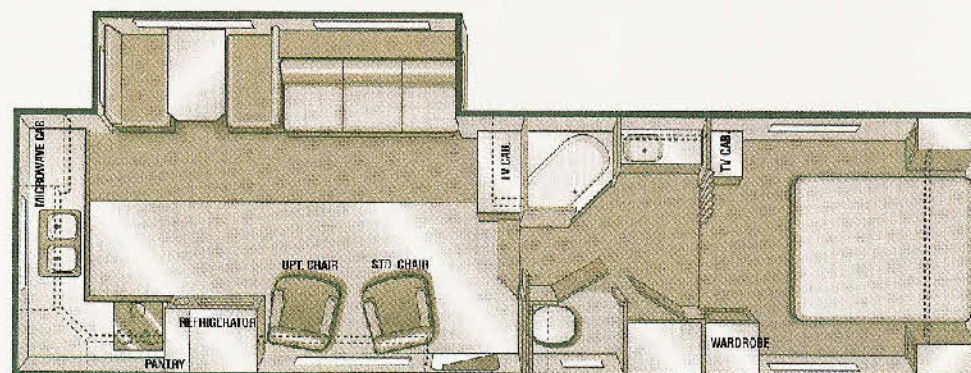
Available with Options D, F and N **27RKFS**



Available with Options D, E, F, L2, O and Q **31BWFS**



Available with Options D, F, L2 and N **28RKFS**

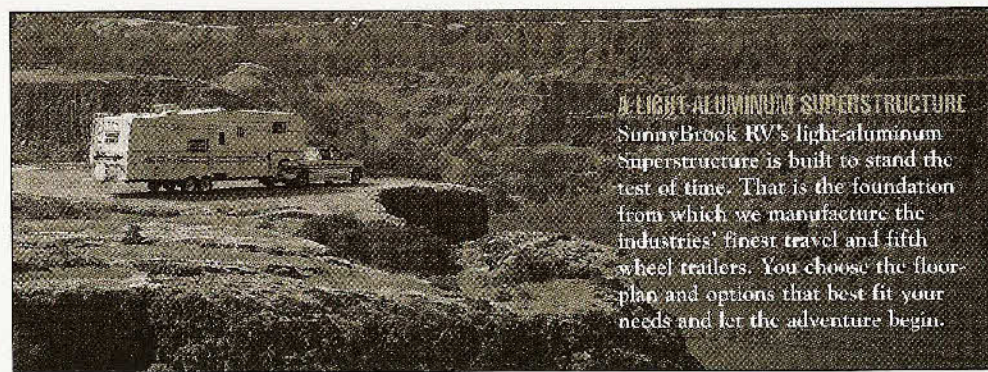
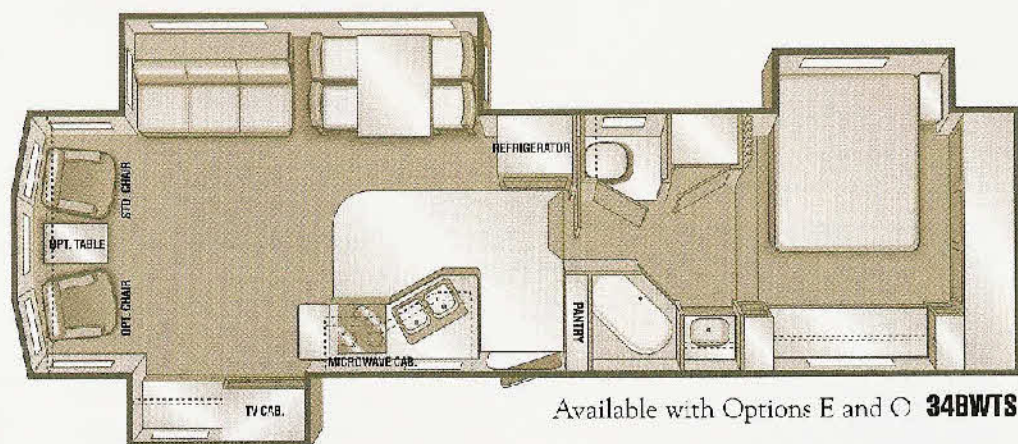


Available with Options D, E, F, L2 and O **33RKFS**

Dotted lines represent overhead cabinetry.

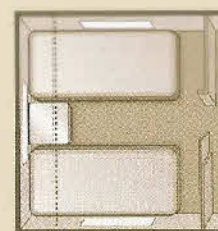
With many travel trailer models and floorplan configurations and great fifth wheel arrangements, SunnyBrook RV gives you more choices than other brands in our price category. Take a few minutes and study the differences—in the floorplans and features on the following pages.





Dotted lines represent overhead cabinetry or storage.

# OPTIONS



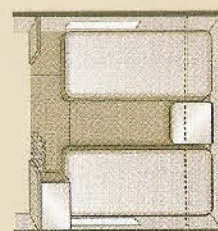
**OPTION A**



**OPTION B**



**OPTION C**



**OPTION D**



**OPTION E**  
(Shower)

**OPTION H**  
(Shower)



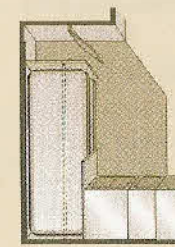
**OPTION F**



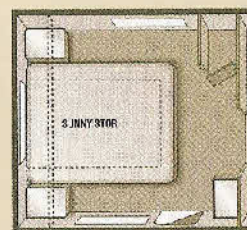
**OPTION N**  
(Shower)



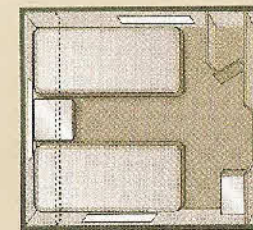
**OPTION O**  
(Shower)



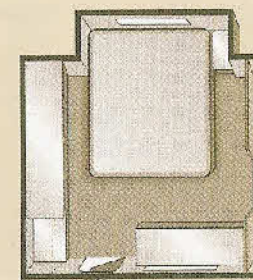
**OPTION Q**  
(Bunk Beds)



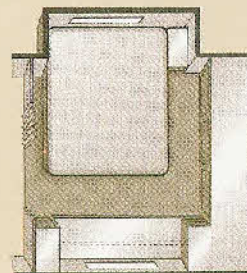
**OPTION J**



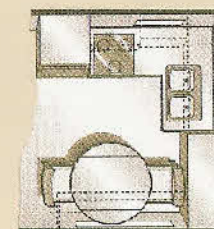
**OPTION K**



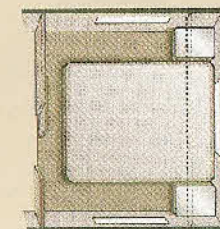
**OPTION L1**  
(Travel Trailer)



**OPTION L2**  
(Fifth Wheel)



**OPTION M**



**OPTION R**

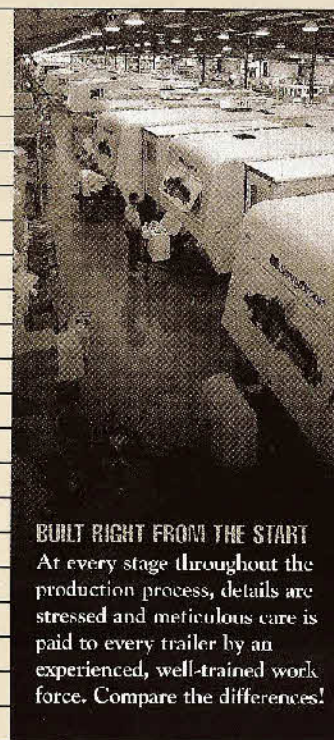


## TRAVEL TRAILER SPECIFICATIONS

	24FB	26FK	26DB	28CKS	27FKS	29DBS	29RBS	30FK	30FKS	30FBS	33FKS	33BWS
Exterior Length	25'-0"	27'-10"	27'-10"	27'-10"	28'-8"	30'-10"	30'-10"	30'-10"	30'-10"	30'-10"	33'-9"	33'-9"
Exterior Height	9'-4"	9'-4"	9'-4"	9'-6"	9'-11"	9'-11"	9'-11"	9'-4"	9'-11"	9'-11"	9'-11"	9'-11"
Exterior Width	8'-0"	8'-0"	8'-0"	8'-0"	8'-0"	8'-0"	8'-0"	8'-0"	8'-0"	8'-0"	8'-0"	8'-0"
Interior Height	6'-5"	6'-5"	6'-5"	6'-5"	6'-5"	6'-5"	6'-5"	6'-5"	6'-5"	6'-5"	6'-5"	6'-5"
Dry Hitch Weight	569	547	487	735	730	695	650	617	885	725	835	895
Dry Gross Weight	4255	4575	4756	5493	6025	6259	6154	5060	6372	6199	6698	6998
GVWR	7840	7840	7840	7840	9632	9632	9632	7840	9632	9632	10,000	10,000
Carrying Capacity	3585	3265	3084	2347	3607	3373	3478	2780	3260	3433	3302	3002
Dual Axles	Straight	Straight	Straight	Straight	Straight	Straight	Straight	Straight	Straight	Straight	Straight	Straight
Tire Size	ST225/75R13C	ST225/75R13C	ST225/75R13C	ST225/75R13C	ST225/75R15C	ST225/75R15C	ST225/75R15C	ST225/75R13C	ST225/75R13C	ST225/75R15C	ST225/75R15C	ST225/75R15C
Hitch Height	22"	22"	22"	23"	23"	23"	23"	22"	23"	23"	23"	23"
Optional Awning Size	18'	21'	21'	21'	21'	21'	21'	21'	21'	23'	21'	21'
Furnace Size	25M BTU	25M BTU	25M BTU	25M BTU	25M BTU	31M BTU	31M BTU	31M BTU	31M BTU	31M BTU	31M BTU	31M BTU
Dometic Gas/Ele. Refer.	Single Door	Single Door	Single Door	Single Door	Single Door	Single Door	Single Door	Single Door	Single Door	Single Door	Single Door	Single Door
Fresh Water Capacity	42	42	42	42	42	42	42	42	42	42	42	42
Black Water Tank Cap.	41	41	41	41	41	41	41	41	41	41	41	41
Gray Water Tank Cap.	34	34	34	34	69	34	34	34	69	34	69	69
Sleeping	6	6	8	6	6	8	6	6	6	6	6	6

## FIFTH WHEEL SPECS

	24CKFS	27CKFS	28CKFS	30CKFS	31BWFS	33CKFS	33RLTS	34BWTS
Exterior Length	25'-0"	27'-11"	28'-6"	31'-0"	32'-0"	34'-0"	34'-0"	35'-4"
Exterior Height	10'-10"	11'-1"	11'-2"	11'-9"	11'-9"	11'-8"	11'-11"	11'-11"
Exterior Width	8'-0"	8'-0"	8'-0"	8'-0"	8'-0"	8'-0"	8'-0"	8'-0"
Interior Height	6'-5"	6'-5"	6'-5"	6'-5"	6'-5"	6'-5"	6'-5"	6'-5"
Dry Hitch Weight	995	1495	1450	1515	1510	1540	2140	1950
Dry Gross Weight	5700	6945	7050	7373	7525	7950	8845	9195
GVWR	8750	10,750	12,700	12,700	12,700	12,700	15,000	15,000
Carrying Capacity	3041	3805	5650	5327	5175	4750	6155	5805
Dual Axles	Straight	Straight	Straight	Straight	Straight	Straight	Straight	Straight
Tire Size	ST225/75R13C	ST225/75R13C	ST225/75R13D	ST225/75R13D	ST225/75R15D	ST225/75R15D	LT235/65R16E	LT235/65R16E
Hitch Height	50"	46"	46"	46"	46"	46"	46"	46"
Optional Awning Size	16'	18'	18'	18'	18'	21'	16'	16'
Furnace Size	25M BTU	31M BTU	31M BTU	31M BTU	35M BTU	35M BTU	35M BTU	35M BTU
Dometic Gas/Ele. Refer.	Single Door	Single Door	Single Door	Single Door	Single Door	Single Door	Single Door	Single Door
Fresh Water Capacity	42	42	42	42	42	42	42	42
Black Water Tank Cap.	41	41	41	41	41	41	41	41
Gray Water Tank Cap.	34	69	69	69	69	69	69	69
Sleeping	6	6	6	6	6	6	4	4



**BUILT RIGHT FROM THE START**  
At every stage throughout the production process, details are stressed and meticulous care is paid to every trailer by an experienced, well-trained work force. Compare the differences!

# S's & O's

(STANDARDS AND OPTIONS)

## CONSTRUCTION

All-Aluminum Bonded Superstructure	S
Extra-Long A-Frame for Tighter Turning Radius	S
5/8" Tongue-and-Groove Exterior-Grade Plywood Floors	S
Flush Floor System on Slide Room Models	S
Floor is Bonded and Screwed to Aluminum Floor Joist	S
Tapered Aluminum Truss-Type Roof Rafters	S
Exterior-Grade Plywood Roof Decking	S
R-7 Fiberglass Insulation in Floor/Walls and R-11 on Roof	S
Complete Home-Cor® Insulation in Walls and Roof	S

## INTERIOR

22oz. Congoleum® Residential Vinyl Floor Covering	S
28oz. Nylon Carpeting (FHA Approved), Dlx Rebound Pad	S
Oak-Edged Formica® Counter and Cabinet Tops	S
Min. Blinds on All Windows and/or Lined Drapes	S
Day/Night Shades	O
Solid Oak Cabinet Doors and Drawer Fronts	S
Wainscot Interior Walls with Solid Oak Trim	S
Large Wardrobe with Drawer System (Most Models)	S
Interior Upgrade Package: (Raised Oak Refrigerator Door Panels, Two Extra Wall Lamps Behind Sofa and Reading Lights at Head of Bed, Fluorescent Light Over Kitchen Sink and Light Bar Over Mirror in Bathroom)	O
Interior SB Package: (Wood Look Floor in Kitchen, Upgraded Sofa (or optional Hide-a-Bed), Curtains, Valances/Lambrequins, Bedspread and Cabinet Doors (available on 31', 33' and 34' Models Only)	O

## BEDROOM

Queen Bed (Width) with Deluxe Pillow Top Mattress	S
Twin Beds (N/A on 26DB, 33RLTS and 34BWTS)	O
Deluxe Bedspread	S
Bedroom Slide-Out (33RLTS and 34BWTS)	S
Bedroom Slide-Out (33FKS, 28RKFS, 31BWFS, 33RKFS)	O
Sunny-Star® System (N/A on Fifth Wheels and 26DB)	S
Trimmed Plywood Bed Board	S
Piston-Lift Beds with Lights (on Queen Beds only)	S



Slit Wardrobes (Available for Most Models)	O
Wall-Switched Overhead Light	S
Roof Vent	S
12V Power Vent or Fantastic® Fan	O

## LIVING ROOM

Flexsteel® Hide-a-Bed (Available with Glide Rooms)	O
Flexsteel Sofa with Decorative Kickboard	S
Oak End Table with Magazine Rack	O
Swivel Rocker	
(One Standard in 33BWS, 30', 31', 33' and 34' Fifth Wheels)	O
Reclining Swivel Chair	O
Ceiling Fan (28', 30', 31', 33' and 34' Fifth Wheels)	O
O/H Cab. in Slide Rooms (N/A 26CKS, 24CKFS, 33RLTS)	S
Oak Trim Perimeter on Slide Rooms	S
Lambrequin Window Treatments in Living Room	S

## BATHROOM

Acrylic One-Piece Bathroom Lavatory Sink Countertop	S
Single Lever Faucet on Lavatory Sink	S
Thetford® Foot-Push Toilet	S
12V Power Roof Vent and Wall-Switched Lights	S
Skylight in Tub/Shower	O
Garden Tub (29RBS, 30/33FKS/BWS, 30RKFS, 31BWS, 33RKFS, 33RLTS and 34BWS)	S
Garden Tub Option (30FK)	O
Shower Curtain	S
Glass Shower Door (All Models)	O
Folding Tub/Shower Door	O
Shower Option (See Floorplans for Details)	O
Radius Shower with Door (30FBS)	S
Radius Shower w/Door (See Floorplans for Details)	O

## KITCHEN

Large Acrylic Double Sink with Cover	S
Single-Lever Faucet on Kitchen Sink	S
Flush-Mount Single-Door Refrigerator	S
Dometic® Royale Double-Door Refrigerator	O
Dometic Royale Large Double-Door Refrigerator	O
Ice Maker in Large Double-Door Refrigerator	O
Raised Oak Refrigerator Door Panels	O
Microwave Oven	O
Three-Burner Range and Oven with Piezo® Ignition	S
Water Filter at Kitchen Sink	O

Sunny-Scar™ (26FK, 30FK)	S
Double-Pedestal Oak-Edged Dinette Table	S
Oak Table/Chairs (Some Models, Std. on 33RLTS, 34BWS)	O
Lazy Susan Cabinet (Most Models)	S
Waste Basket (Pull-Out on Most Models)	S
Fantastic® Fan	O

## ENTERTAINMENT

TV Antenna with Power Booster	S
AM/FM Cassette Stereo with Speakers	O
Compact Disk CD Player Add On	O
Cable TV Hookup and Telephone Jacks	O
TV Shelf with Outlet in Bedroom	O
Satellite Dish	O
27" Color TV (Some Models)	O
VCR Compartment (Most Models)	S
Entertainment Package (33RLTS, 34BWS) 27" Color TV, VCR, CD Player, AM-FM Tuner/Amplifier, Dual-Cassette Player/Recorder and Surround Sound Speakers	O

## SYSTEMS

AC/DC Power Converter with Charger	S
Floor-Ducted Forced-Air Furnace	S
Dual 30lb. L.P. Tanks with Auto Change-Over Regulator	S
Enclosed Heated Holding Tanks (27FKS, 30FKS, 30FBS, 29' and 33' Travel Trailers & All Fifth Wheels Except 24CKFS)	S
Atwood® Gas 6-Gallon Water Heater	S
Atwood Direct-Spark Ignition Gas 6-Gal. Water Heater	O
Atwood Gas or 110V Electric 6-Gallon Water Heater	O
Atwood Direct-Spark Ignition Gas or Electric 6-Gal. Heater	O
Atwood 10-Gallon Water Heaters	
(27FKS, 30FBS, 30FKS, 33FKS, 30', 31', 33', 34' Fifth Wheels)	O
Water Heater By-Pass System	O
Dometic® 13,500 BTU Ducted Air Conditioner	O
Dometic 13,500 BTU Ducted Air Conditioner with 2-Speed Control	O
Dometic 13,500 BTU Ducted Air Conditioner with Heat Strip	O
Dometic 15,000 BTU Ducted Air Conditioner	O
Dometic 15,000 BTU Ducted Air Conditioner with Heat Strip	O
Cool Air Diverter with All Air Conditioners	S
Washer/Dryer Prep or Installed (33FKS, 30RKFS, 33RLTS, 33RKFS, 34BWS) Includes 10-Gal. Water Heater Upgrade	O

## EXTERIOR

.324 Mesa Aluminum on Sidewalls	S
Dead-Bolt Locks on Entry Doors	S
Door Side Patio Light, Front and Roadside Setup Lights	S
30" Main Entry Door (Wheelchair Accessible, All Units Except 24FB)	S
Lights in Outside Storage Compartments	S
Radius Corner Front Window Awning	S
White Framed Radius Doors (and Baggage) and Windows	S
12V Power Front Jack	O
A&E® 8500 Series Awning, Center Rafter and Slide-Room Awnings	O
Door Bell	O
Gel-Coat Fiberglass End Caps	O
Gel-Coat Fiberglass Sidewalls	O
Lifco® Leveling or Stabilizing Jacks	O
Molded Bottle Cover with Hinged Lid	O
Outside Shower	O
Rear Window Stoneguard (Most Models)	O
Reinforced Rubber Roof	S
Reinforced Rubber Roof with Rack and Ladder	O
Safety Glass Windows or Storm Windows	O
Deep Tint Windows	O
Spare Tire, Carrier and Cover	O
Lighted Grab Handle	S
Lead-A-Hand Grab Handle	O
Aluminum Bumper Cover	S
Hard Tire Cover and Chrome Ring	O
Aluminum Wheels	O
Extended Pin Box on Fifth Wheels	
(Standard on 24CKFS, N/A on 31', 33' and 34' Fifth Wheels)	O
Recessed Taillights on Fiberglass End Caps	S

## SAFETY

Name Brand Radial Tires	S
Four-Wheel Electric Brakes	S
Break-Away Switch	S
Smoke Detector	S
L.P. Leak Detector	S
GFI Electrical Circuit Protection	S
Dexter® Nav-R-Lube Axles (Sealed Bearings) All Models	S
All Wheel Shock Absorbers (24' and 26' Travel Trailers)	O

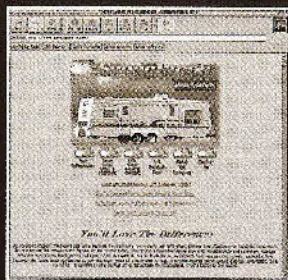
Ferrie-Cor, Congoleum, Flexsteel, Dometic, Pierce, Atwood, A&E and Dexter are all registered trade names of their respective companies. If the brand name products listed here are not available, they will be substituted during production with items of similar quality. Some photographs may show optional equipment available at an additional cost.



## JOIN OUR FAMILY



The SunnyTravelers camper club filled the fairgrounds at York, PA



### VISIT US ON LINE

Now you can print out color photos, review all models and specifications, take 3-D virtual product tours of popular floorplans without ever leaving home. Visit our innovative, user-friendly website today by typing and logging on to: [www.sunnybrookrv.com](http://www.sunnybrookrv.com)



### PRODUCT VIDEO

Do you live too far away to take a guided factory tour? Then this video is your ticket. Ask your dealer if you can view the tape or contact us for your own personal copy, available for a small fee. It's informative and a great way to show friends what you're buying.



### A REAL WARRANTY

That's right! The entire trailer. Anything built by SunnyBrook that's not right will be made right. OEM items such as Dometic, A&E and etc. come with their own warranties and coverage periods. Check with your dealer for complete warranty details.





with almost 250 units. Fun and enjoyment, however, were immeasurable.



#### **SUNNYBROOK CAMPER CLUB RALLY KEEPS GROWING**

Now you can live the RV lifestyle with folks just like you. Our SunnyTravelers camper club holds annual (and industry-best, we're told) rallies plus guided caravans throughout the USA. Mackinaw City, Michigan; York, Pennsylvania; and next year: Nashville, Tennessee are a few of the great locations we have and will be meeting. SunnyBrook rallies are never dull. Auctions, games and activities, tours, live entertainment and camaraderie are enjoyed by all who attend. Don't miss these good times with great people!

Please read the following fine print—it's large because we have nothing to hide! SunnyBrook RV, Inc. believes all information, colors, standards, options and specifications shown and listed within this brochure to be accurate at the time of printing.

#### **Go RVing<sup>SM</sup>**

We ask that you consult your local, authorized SunnyBrook or Mobile Scout dealer for the latest improvements and changes. Or give us a call direct and tell us about your RV experience. Contact us by writing SunnyBrook RV 201 14th Street, Middlebury, IN 46540 or call 219-825-5250, send faxable information to 219-825-5433, or visit our website at [www.sunnybrookrv.com](http://www.sunnybrookrv.com) for more information. Printed in the USA. 8/00. ©2000 SunnyBrook RV, Inc. The company is a member in good standing with the RVIA (Recreational Vehicle Industry Association).





**SunnyBrook**

SunnyBrook RV, Inc. 201 14th St. Middlebury, IN 46540

Phone: 219-825-5250 Fax: 219-825-5433

Website: [www.sunnybrookrv.com](http://www.sunnybrookrv.com)



A brand name from SunnyBrook RV marketed in the southwest.