



The Official RV of Disney's Fort Wilderness Resort and Campground  
and Disney's Wide World of Sports™ Complex

**Ultimate RV<sup>SM</sup>  
Vacation Program  
FREE!**

Two Weeks RV Vacation

Two-Year Structural &  
Major Components Warranty

**FREE!**  
**Coachmen Caravan**  
Owner's Club Membership  
& Benefits



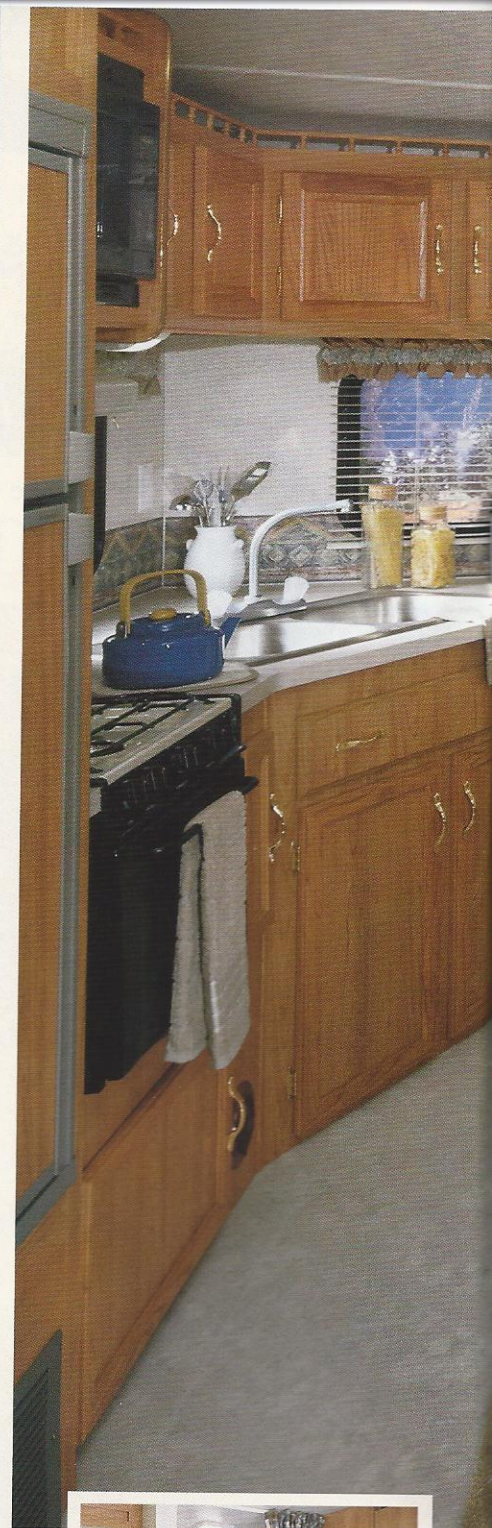


*for the new millennium*

# Catalina. Exactly What You Want It To Be

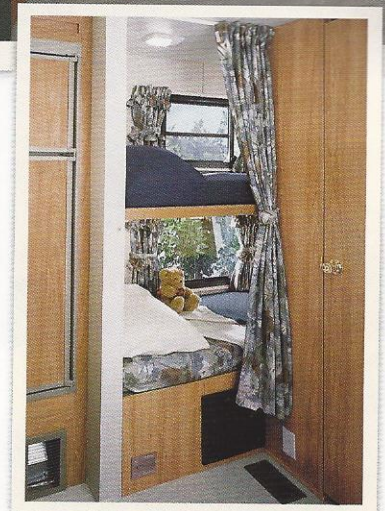
Each individual may have a different idea of what to do with leisure time, but most people agree there simply isn't enough of it. That's why it's important to make every minute count. You can, with affordable Catalina Travel Trailers and Fifth Wheels. Catalina is exactly what you want it to be. . . a second home at the lake; a weekend getaway; or a comfortable way to travel across the country.

Many attributes explain Catalina's remarkable popularity. Maybe it's because Catalina is designed and built to stand up to real life. Or maybe because it comes in so many shapes and sizes – just like families. There's a Catalina model that matches your needs, lifestyle and budget.



The 300TBS features plenty of living space with the large slide out room. Shown in Blue Dimension.

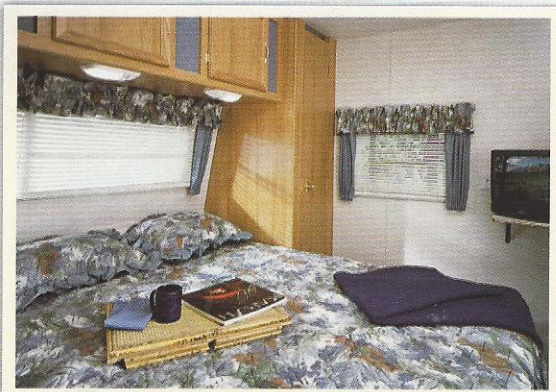
Convenient bunk beds, whether standard or optional, are available on many Catalina floorplans.







Beautiful Golden Cherry Finish Cabinets accentuate the expansive "great room" style layout of the 245RKS. Pictured in Sable Sand decor.



Enjoy comfortable sleeping on the deluxe inner spring queen mattress.

The only thing missing from Catalina is your family! Whether you explore new territories or return to the solace of familiar ones, Catalina can take you there. Catalina is where your leisure time dreams become reality.



*for the new millennium*

# Catalina, Features Galore!

A complete photo album would be required to fully display the many features and innovations of Catalina Travel Trailers and Fifth Wheels. Here are just a few of the many features available from Coachmen RV.

## Decor Selections

Blue Dimension



Fantastic Teal



Sable Sand



Imperial Sage



◀ Dazzling interiors feature skillfully coordinated upholstery and window treatments. What doesn't meet the eye is the exceptional quality of our furniture. Coachmen chooses only top-grade fabrics wear-dated as heavy-duty. These fabrics have been tested for durability beyond 15,000 double rubs (in and out action) to simulate heavy usage. An average chair in an American home is subjected to only 3,000 double rubs per year.



Residential quality continuous filament nylon carpeting with thick pad stands up to dirt and wear.



Coachmen's optional ducted roof air conditioning system is the best of it's kind. Every angle, seal and vent has been carefully designed for maximum cooling with minimum condensation

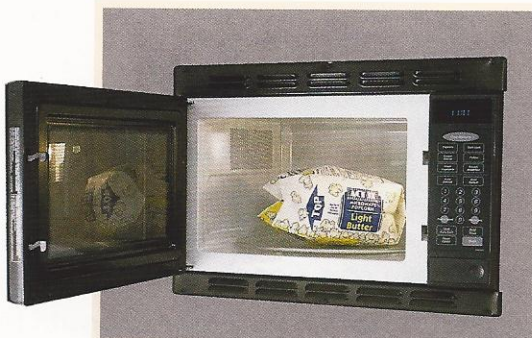


Floor-ducted heat system provides balanced heat distribution. The duct system itself is sealed and insulated to avoid an inefficient loss of heat.





Our spacious refrigerators feature a convenient interior light, and a handy freezer shelf.



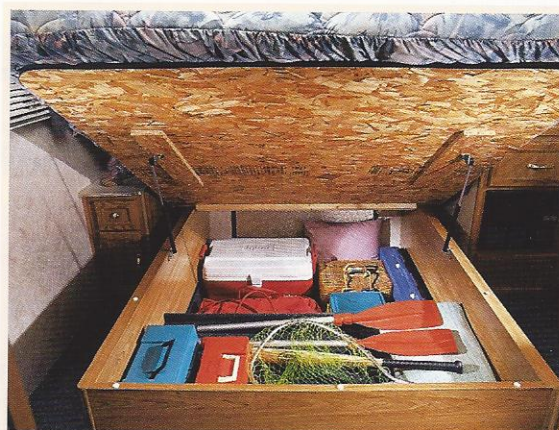
The optional microwave oven boasts a huge 1.2 cu.ft. interior space, making preparation of large dishes a breeze.



Catalina roofs are covered with a seamless rubber skin and feature tapered rafters for superior water runoff and leak prevention.



Another Coachmen innovation is the functional and handy under-sink silverware and utensil drawer.



Most Catalina beds are equipped with a bed-lift storage system that features hydraulic cylinder lift struts for ease of operation.



You'll be sure to appreciate the massive storage compartment in Catalina Fifth Wheels.



Optional Filon® fiberglass sidewalls are available on several Catalina floorplans.



*for the new millennium*

# A Proud History of Quality & Value

**Thank you for considering the purchase of a Coachmen RV. We would like to take this opportunity to tell you more about the Coachmen family and show you why you'll be "In Good Company With Coachmen".**

In 1964, Coachmen Industries was founded by three brothers, Tom, Keith and Claude Corson. They built the company on principles such as:

- "Practice the Golden Rule"
- "Our Word is our bond"
- "Business goes where it is invited and stays where it is well cared for"
- "Dedicated to the enrichment of your life"

By staying committed to these principles, Coachmen has grown to become one of the largest full-line manufacturers of RVs in the world.

The Corson brothers started Coachmen Industries, Inc. in a 5,000 square foot plant in downtown Middlebury, Indiana. First year production included 12 travel trailers, a single truck camper and 80 truck caps. Since that time Coachmen Companies have produced nearly 600,000 recreational vehicles of all sizes and types.

In 1969, the Company became a public company, and in 1972 Coachmen was first listed on the American Stock Exchange. In January of 1978, the stock was approved for trading on the New York Stock Exchange. In 1984, Coachmen joined the ranks of the prestigious Fortune 500.



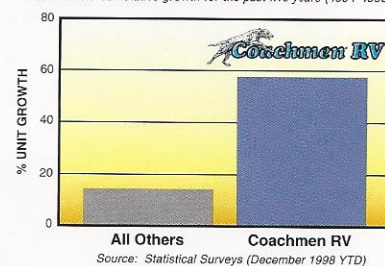
Come visit us at our Complex in Middlebury, Indiana (above) where you can relax at our Visitor's Center and enjoy guided tours of the assembly plants. Also visit us at our facilities in Fitzgerald, Georgia, Goshen, Indiana and Grants Pass, Oregon.

Today Coachmen Industries, Inc. has grown to become a diverse corporation. Aside from the Company's recreational vehicle operations, Coachmen Industries also is the country's largest producer of modular housing. Other markets served by Company divisions include office seating, recreational vehicle furniture and automotive parts and accessories as well as fiberglass and ABS components for recreational vehicles.

Coachmen Recreational Vehicle Company is the largest division and cornerstone of Coachmen Industries, Inc. and continues to be one of the industry's fastest growing companies in terms of sales and market share. Over the past five years, Coachmen RV has outperformed the rest of the industry by over 100%.

## Incredible Sales Growth Continues

Coachmen RV cumulative growth for the past five years (1994-1998)



Our main headquarters and primary manufacturing facilities are located in Middlebury, Indiana. We also have manufacturing facilities in Goshen, Indiana, Fitzgerald, Georgia, and Grants Pass, Oregon. In all, we occupy nearly 700,000 square feet of manufacturing space on nearly 120 acres. Over 1,600 dedicated workers will produce approximately 15,000 Coachmen RVs within the year.

You will find proof of our dedication in our innovative and user-friendly products and our wide range of customer benefits and services. We are driven by a deep concern for your safety, comfort, pride of ownership and pleasure – in short, your Ultimate Satisfaction.

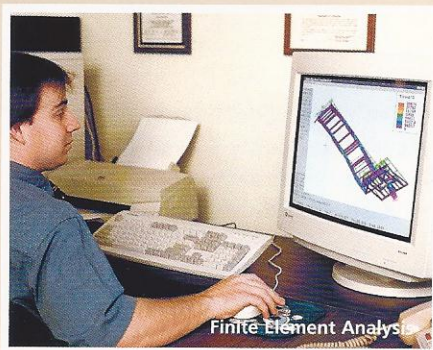
Take a closer look at Coachmen RV Company and see why we're known as the...

**"Leader To The Great Outdoors".**



# Up-Front Design for Long Term Comfort

Founded in 1964, Coachmen is one of the oldest, continuous producing manufacturers of recreational vehicles. A secret of our success is our commitment to the continuous improvement of our products. We have learned that quality must be designed and built into the products, up front. Combining experience and technology, we are able to prevent many problems before they arise, through proper analysis and testing.

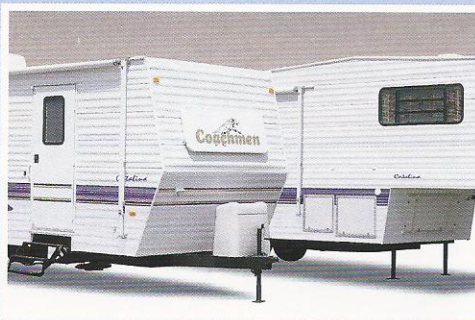


## Design & Analysis

Unlike most companies, Coachmen uses computerized technology for much more than simple drafting applications.

At Coachmen RV, we utilize and rely on advanced computer technology to design and engineer a reliable and safe vehicle for you and your family. Finite Element Analysis helps evaluate structural integrity of components and systems quickly and efficiently. 3D model simulations and numerous other process and software systems are also used in the design and development of Coachmen recreational vehicles.

Computer weight testing is performed on every new model. Before a floorplan is approved, we know the approximate weights, including dry and loaded, front and rear axle weights and even side-to-side weights which affect towing. After a model is built, the computer analysis is manually verified.



## Performance Testing

Coachmen does not want, nor expect, our customers to be the "proving ground." We believe it is our job to adequately test our products, before they reach our customers.

Coachmen subjects its new models to a myriad of stringent tests, before introduction to the customer. Rigorous road tests, sometimes up to 15,000 simulated miles, are performed on actual production units, to verify computer modeling. Studies are made of structural integrity, stress analysis, cabinetry durability, weight loading, vibration analysis and handling.

There can be little doubt that Coachmen has superior quality – by design.



## Leak Prevention

Due to the complexity of the product, compounded by road vibration, water leaks can be a problem. Coachmen's quest is to eliminate this frustrating and potentially damaging problem.

Every corner – at the roof, floor and sidewall is wrapped, sealed and secured. All roof and sidewall openings receive framing reinforcement, and are sealed with a non-shrinking, pliable silicone.

To promote water drainage and leak protection, all roofs have tapered rafters.

Finally, every unit we produce is tested for leaks in a high-pressure rain chamber, designed to simulate a driving rain, not just a spring shower.



**for the new millennium**

# A Company You Can Trust

For over 35 years Coachmen RV has been leading the RV Industry in product design, dependability and customer service support. We work very hard in seeking to have our products exceed your expectations. Equally important is the service that we provide during your ownership experience. Whether it be information about your unit, reliable warranties, or industry leading service support . . . Coachmen RV ranks second to no one.

## Comprehensive Product Information

Your new Travel Trailer or Fifth Wheel comes with a complete *Owner Information Guide*. This comprehensive package provides a wealth of information about your new unit.

The guide contains everything you ever need to know about operation and maintenance including:

- Product Warranty Summary Booklet
- Owner's Manual
- Maintenance Guide
- Trouble Shooting Guide

Manuals for all the major components, appliances and accessories are also included.

## Owner's Video

Coachmen provides an owner's video with each new Coachmen RV. This helpful video walks you through a series of informative tips on how to prepare for a trip, use of your unit on the road, setting up your unit at your destination, getting back on the open road and unit storage tips.

## Buckstopper Warranty

Your Owner's registration card and our famous Buckstopper Limited Warranty is your passport to worry free travel.



Coachmen RV features a complete parts and service center at the Middlebury, Indiana complex. Relax during your visit in our comfortable parts and service lounge.

Our nationwide network of approximately 350 authorized Coachmen Service Centers stand ready to provide you with courteous, dependable and timely service. Coachmen RV also owns and operates Regional Service Centers, all of which are committed to satisfying your needs.

## Two Year Structural & Major Components Warranty

In addition to your One Year Buckstopper Warranty, you can travel with confidence knowing that all of your major structural components such as walls, ceilings, and floors are covered for two years by Coachmen's Extended Structural Limited Warranty. Coachmen also boasts a Two Year Major Components Limited Warranty



for all of your major components and appliances, including TV's VCR's, Air Conditioners, Furnaces, and Kitchen Appliances to mention a few.

## Transferable Warranty

Your Buckstopper Warranty may be transferred to a subsequent owner for a small registration fee, in the unlikely event you sell your Coachmen RV during the term of your one-year warranty period. This feature enhances the resale value of your Coachmen product.

## Additional Service Support

Coachmen also provides a toll free service number for your assistance and convenience, along with a Priority Customer Parts Order program for overnight part shipments in critical repair situations. Coachmen's Service & Parts Department is staffed with trained professionals that are committed to satisfying your needs.

## Ultimate Satisfaction – First

Coachmen RV owners regularly receive comprehensive surveys through our Ultimate Satisfaction – First (US1 Program). US1 questionnaires provide us with valuable information regarding our customers' products as well as the purchase and ownership experience. Listening to our customers helps us achieve your... "Ultimate Satisfaction – First".



# Enjoy Your Coachmen RV More with International Caravan



Your purchase of a Coachmen recreational vehicle qualifies you for a free, one-year membership in the International Coachmen Caravan, the nation's largest manufacturer sponsored RV club.

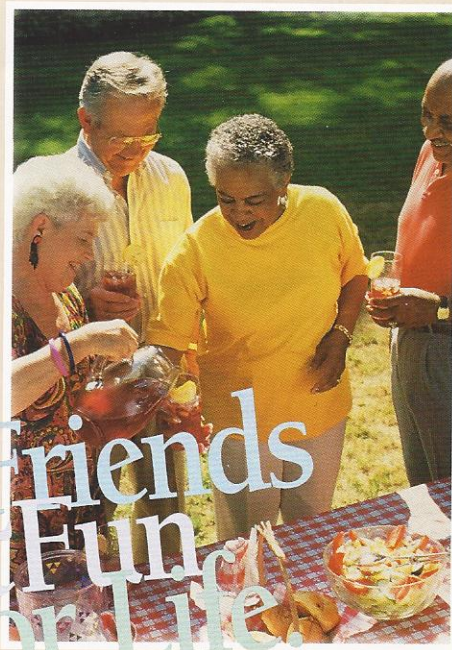
Consisting of over 23,000 member families, the Coachmen Caravan was formed in 1966 to help our owners enjoy RV ownership to the fullest.

With Coachmen, unlimited opportunities exist for you and your family to form lifelong friendships; improve and share your unique talents, skills and crafts; be active in running your club; and exchange ideas, information and helpful hints — all these, plus the many benefits outlined below, are uniquely yours through the International Coachmen Caravan.

## Incredible Membership Benefits.

In addition to automatically expanding your circle of friends, your Caravan membership brings you a multitude of benefits:

- ✓ Free \$5,000 Accidental Death and Dismemberment Insurance policy, with additional policies available for \$5 a year.
- ✓ Emergency road service and RV insurance at low rates.
- ✓ Free trip-planning service.
- ✓ 10% Discounts at over 4,000 campgrounds in the U.S. and Canada.
- ✓ Free annual Campground Directory.
- ✓ Hassle-free group travel to popular destinations.
- ✓ Free lost-key return service.
- ✓ Organized campouts, meetings and parties.
- ✓ Free subscription to COACHMEN CAPERS, the club's quarterly magazine.

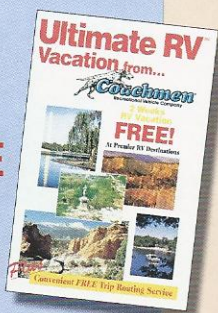


- ✓ Annual International Rally Week.
- ✓ A Coachmen Caravan MasterCard with no annual fee and low interest.
- ✓ Free I.D. card, Caravan key ring, vehicle decals and I.D. numbers.
- ✓ Discounts on club clothing, accessories, film developing and selected RV publications.

## 2 Weeks RV Vacation **FREE** at Premier RV Destinations. Plus **FREE** Trip Routing Service.

Now you can experience the RV lifestyle at it's very best with Coachmen RV's **Ultimate RV Vacation Program\***. Purchase any new Coachmen Class A Motorhome, Class C Mini Motorhome, Travel Trailer or Fifth Wheel and Coachmen RV will provide **2 weeks of free camping** at premier RV destinations across the country.

The Ultimate RV Vacation Program is convenient and easy to use. Coachmen RV has done all the work for you. See your authorized Coachmen RV dealer to obtain our comprehensive Ultimate RV Vacation Booklet. The Booklet provides detailed profiles of each participating resort so all you have to do is choose a location and make your reservation. It's as easy as that! See your nearest Coachmen RV dealer now for all the details of this great new program.



## Coachmen RV Invites Public to Tour Facilities

The Coachmen Visitor's Center in Middlebury, Indiana is your starting point for weekday tours of our motorhome, travel trailer and fifth wheel manufacturing plants. Also located at the Visitor's Center is the headquarters of the

International Coachmen Caravan Owners Club and the Coachmen RV store "Pete's Market", loaded with a large selection of Coachmen RV clothes and merchandise. Please call ahead for tour information and times. The Coachmen RV plants in Fitzgerald, Georgia, Goshen, Indiana and Grants Pass, Oregon produce travel trailers and fifth wheels only. Motorhome production tours are available only at the Middlebury location.



\*Certain restrictions apply



*for the new millennium*

# Take a Closer Look at Coachmen Quality Construction

**1** We believe in our products and back them with a two year structural warranty.

**2** Our truss roof rafters are similar to home construction and offer terrific strength.

**3** We deck our entire roof to add strength and to assure a smooth roof, which improves water run off.

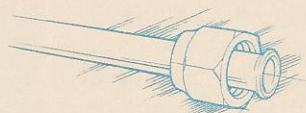
**4** Wood cabinets, with screwed (not stapled!) fronts are mounted to backing in the sidewalls so they stay secure and won't pull free.

**5** Our entry door is 30" wide, has an integrated drip rail and is painted to avoid unattractive metal oxidation which occurs on unpainted door frames.

**6** Equipped with an abundance of interior and exterior lighting including an off-door-side porch light, LP light and a porch light.

**7** We use top quality, #2 grade spruce lumber on 16" centers for strength and reliability.

**8** We insulate around every refrigerator to improve operating efficiency and prolong the trouble free life of the refrigerator.



**9** All copper LP lines with double flare fittings help assure no rust will get into and damage your appliances the way black steel LP lines can.

**10** Plumbing - All fresh water lines are polybutelene (crack and freeze resistant). Holding tanks are crafted from rotocast and durable polypropylene.

**11** Take a look under the floor at our well organized and secure electrical wiring and LP lines.

**12** Weyerhaeuser Structurwood Floors come in 24 foot lengths to reduce seams and create a floor 10% stronger than plywood.

**13** Aluminum floor ducting distributes heat throughout the unit from a centrally located electronic ignition furnace.



**30** Coachmen "Even Cool" ducted roof air conditioning provides quiet, cool air that easily distributes through the same extruded baffled ducting used in household construction.

**29** All roof seams are sealed with butyl rubber based sealants that expand and contract with the climate to help prevent leaks.

**28** A 2" x 10" header called Timberstrand assures a precisely straight and strong support for our slideroom opening.

**27** We taper the slideroom roof to assure controlled water run-off.

**26** Baked enamel aluminum with no vertical seams in the metal, eliminates leak areas.

**24** Seamless rubber roofs are crowned to allow controlled water run-off, which helps prevent leaks.

**25** Metal sleeves in wall studs protect all 110 volt wiring.

**23** Safety is utmost. The LP leak alarm, fire extinguishers, smoke detector and heavy link safety chain are all standard.

**22** We use only radius clamp ring windows which have no exterior fasteners or screw covers. We seal our windows with butyl encapsulated foam for years of trouble free use.

**21** Windows in the slideroom sidewall provide an open feeling and are always slide windows (not jalousie) to prevent accidents when moving your slideroom.

**20** Owens-Corning fiberglass insulation, with an R-7 rating, is carefully hand packed between each stud to maximize the insulation's effectiveness.

**19** All wheel wells are galvanized steel and are sealed and undercoated with Kendall Automotive Sound & Seal.

**18** Slide room floors are framed in tubular steel to provide a solid foundation.

**17** Independent suspension and brakes on all wheels with automotive studded hubs and lug nuts.

**15** We wrap the entire underbelly with an extremely tear resistant, fiber laminated, polypropylene material called Darco to help keep water and dirt out.

**16** All outside storage doors have latches to hold the door open which makes access to the storage areas easier. Abundant interior storage includes large residential style closet drawers and innovative under sink utensil drawer. All drawers utilize reliable metal drawer glides

**14** Steel framing, with full width steel outriggers and cross members provide a reliable foundation to build upon.

*Note: Tubular steel frame shown in illustration. Some units are constructed with I-beam steel.*

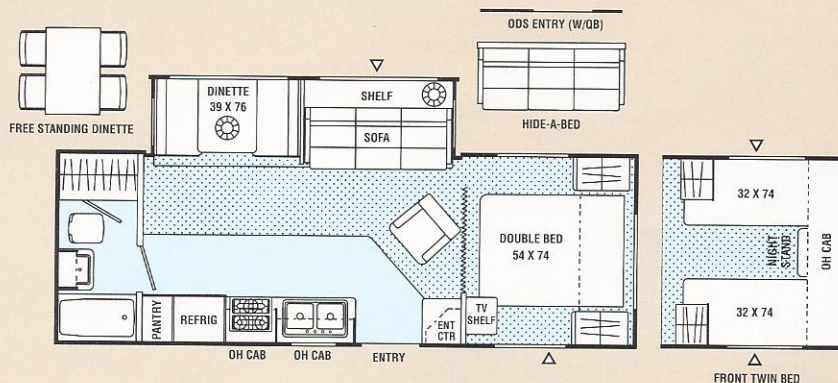




## 270rbs / Rear Bath / Slide Out / Wide Body

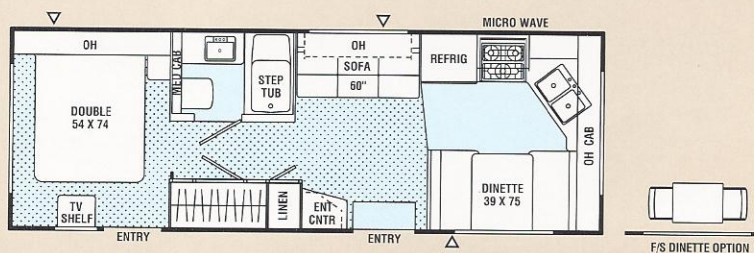
Optional Filon® Fiberglass Sidewalls Available

**NEW**

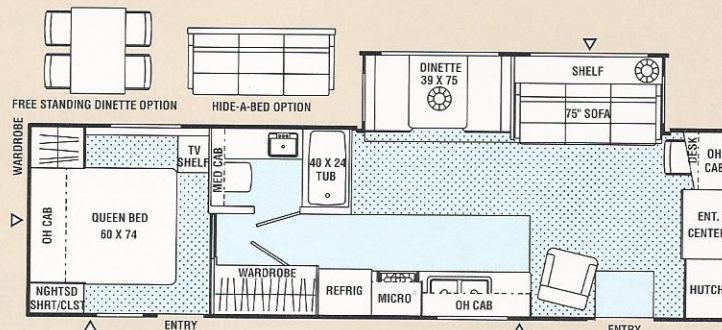


## 271fk / Front Kitchen / Wide Body

Optional Filon® Fiberglass Sidewalls Available



## 291fls / Rear Bath / Slide Out / Wide Body

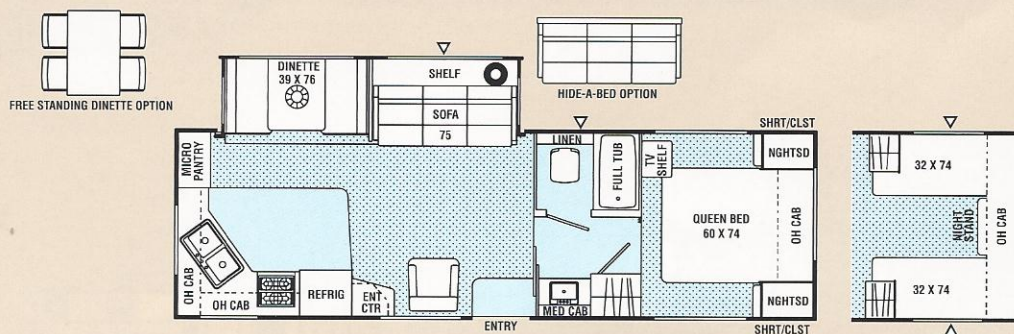


■ INDICATES CARPETING

△ INDICATES OUTSIDE STORAGE LOCATION

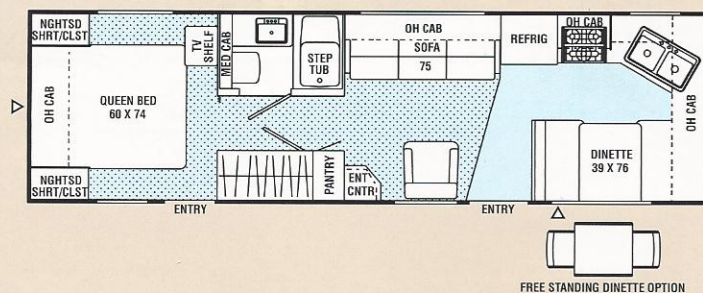


## 297rks / Rear Kitchen / Slide Out / Wide Body



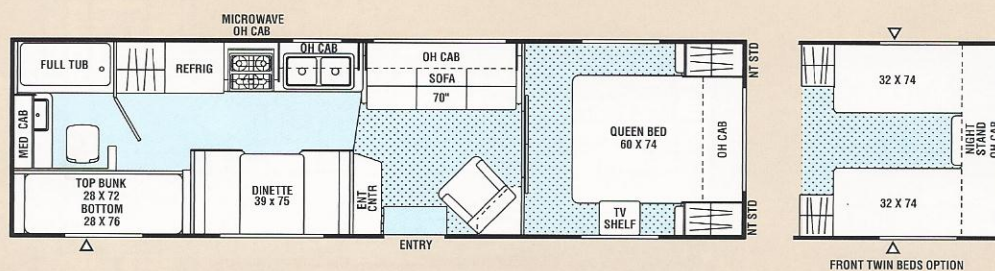
## 298fk / Front Kitchen

Optional Filon® Fiberglass Sidewalls Available

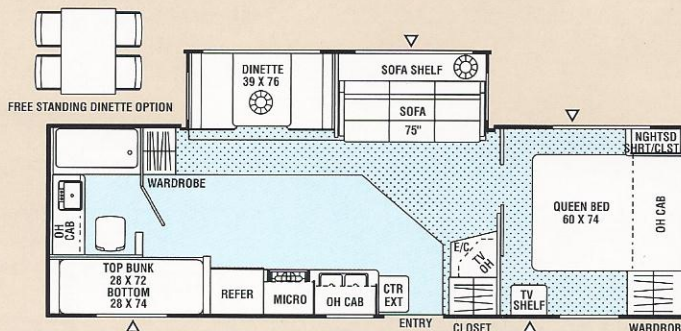


## 299tb / Two Bedroom

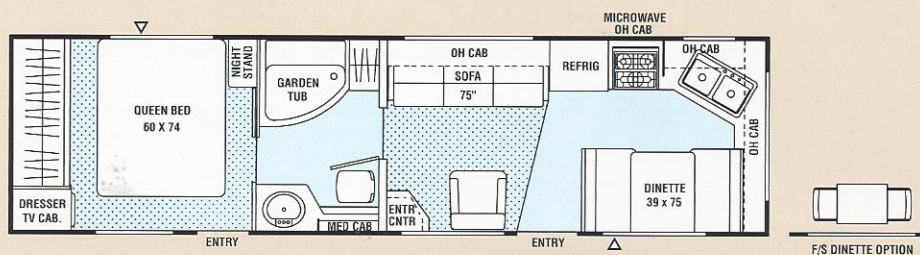
Optional Filon® Fiberglass Sidewalls Available



## 300tbs / Two Bedroom / Wide Body



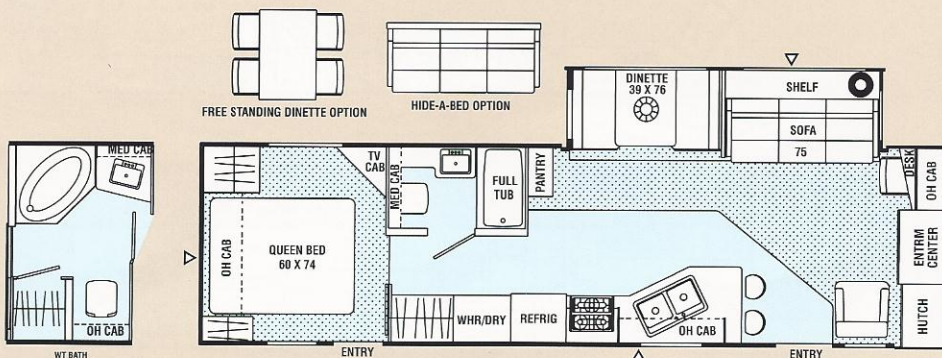
## 310wb / Walk Thru Bath



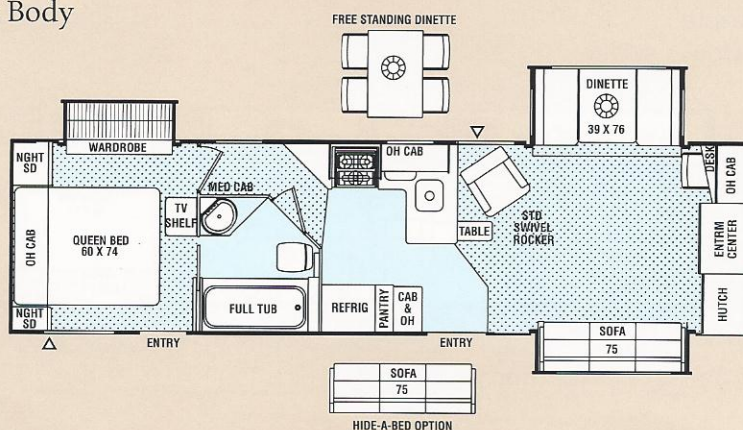




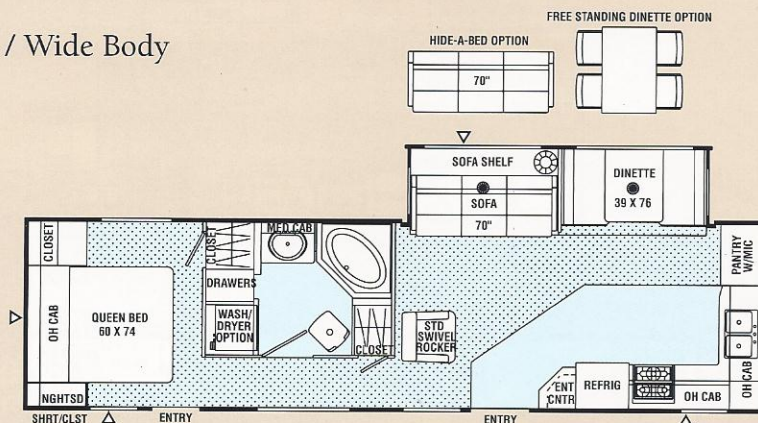
## 338fls / Front Lounge / Slide Out / Wide Body



## 340sa / Side Aisle / Wide Body



## 348fks / Front Kitchen / Wide Body

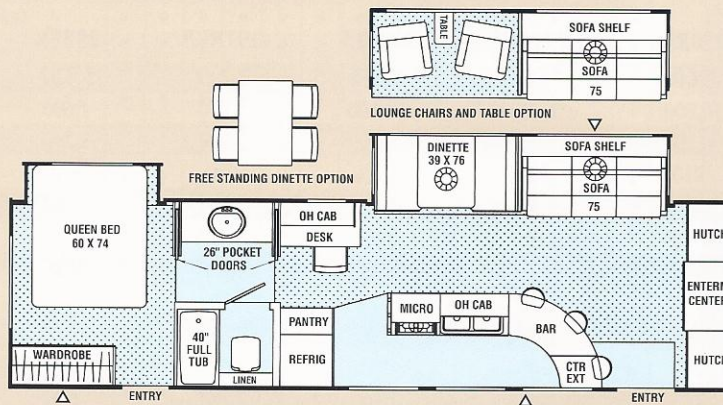


INDICATES CARPETING

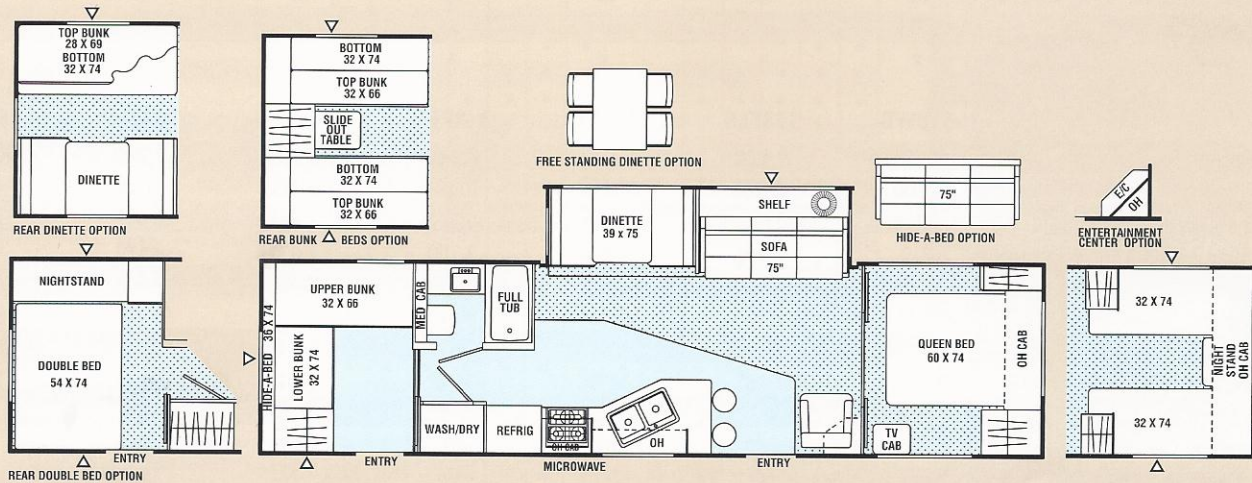
INDICATES OUTSIDE  
STORAGE LOCATION



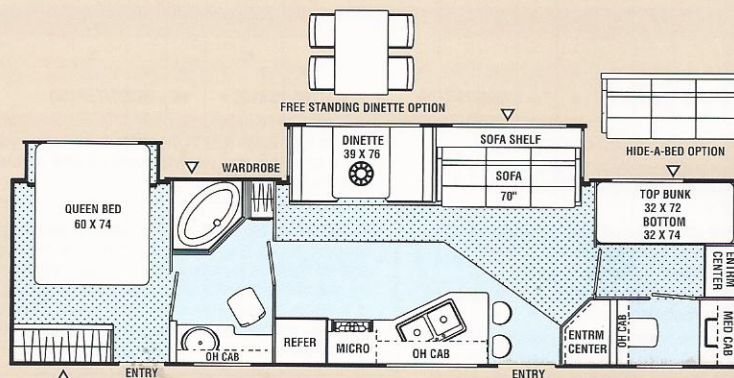
## 361fls / Front Lounge / Slide Out / Wide Body



## 364tbs / Two Bedroom / Slide Out / Wide Body



## 366tbs / Two Bedroom / Slide Out / Wide Body





*for the new millennium*

## Specifications

	270RBS	271FK	291FLS	297RKS	298FK	299TB	300TBS
<b>Base Weight</b>	<b>6,606</b>	<b>4,924</b>	<b>7,972</b>	<b>7,222</b>	<b>5,357</b>	<b>5,288</b>	<b>7,381</b>
GVWR	10,800†	7,600	10,800	8,970	7,600	7,600	10,800
Carrying Capacity	4,194	2,676	2,828	1,748	2,243	2,312	3,419
Hitch Weight	910	660	1,100	970	870	710	860
Axle Weight	5,696	4,264	6,872	6,252	4,487	4,578	6,521
Interior Height	6' 10"	6' 6"	6' 10"	6' 10"	6' 6"	6' 6"	6' 10"
Exterior Height*	10' 3"	9' 3"	10' 3"	10' 3"	9' 3"	9' 3"	10' 3"
Exterior Length	27' 6"	27' 6"	32' 11"	31'	30' 8"	31' 10"	30' 4"
Exterior Width	8' 5"	8' 5"	8' 5"	8' 5"	7' 10"	7' 10"	8' 5"
Hitch Pin Height	19"	18"	19"	19"	20"	20"	20"
Sleeping Capacity	6/4	6/4	6/6	6/4	6/4	8/8	6/6
Fresh Water Capacity (gal.)	36	40	36	36	30	30	36
Waste Water Capacity (gal.)	40	42	40	40	42	40	40
Grey Water Capacity (gal.)	40	34	42	42	34	32	40
Water Heater Capacity	6	6	6	6	6	6	6
LP Gas Capacity (lb.)	60	60	60	60	60	60	60
Furnace Rating (x 1,000)	31	31	35	31	31	31	31
Tire Size	x	o	x	•	o	o	x

	310WB	338FLS	340SA	348FKS	361FLS	364TBS	366TBS
<b>Base Weight</b>	<b>5,425</b>	<b>8,128</b>	<b>8,963</b>	<b>8,440</b>	<b>8,965</b>	<b>8,259</b>	<b>8,779</b>
GVWR	7,600	10,800	10,800	10,800	10,800	10,800	10,800
Carrying Capacity	2,175	2,672	1,873	2,360	1,835	2,541	2,021
Hitch Weight	910	1,240	1,310	1,200	1,050	1,170	1,260
Axle Weight	4,515	6,888	7,653	7,240	7,915	7,089	7,519
Interior Height	6' 6"	6' 10"	6' 10"	6' 10"	6' 10"	6' 10"	6' 10"
Exterior Height*	9' 3"	10' 4"	10' 4"	10' 4"	10' 4"	10' 4"	10' 4"
Exterior Length	32' 10"	33' 8"	34' 8"	34' 8"	35' 1"	36' 1"	35' 8"
Exterior Width	7' 10"	8' 5"	8' 5"	8' 5"	8' 5"	8' 5"	8' 5"
Hitch Pin Height	20"	20"	20"	20"	20"	20"	20"
Sleeping Capacity	6/6	6/4	6/4	4/6	6	9/10	6
Fresh Water Capacity (gal.)	30	36	40	36	36	36	36
Waste Water Capacity (gal.)	32	40	54	42	42	40	82
Grey Water Capacity (gal.)	32	42	40	56	70	42	42
Water Heater Capacity	6	6	6	6	6	6	6
LP Gas Capacity (lb.)	60	60	60	60	60	60	60
Furnace Rating (x 1,000)	31	35	40	40	40	40	40
Tire Size	o	x	•	•	x	x	x

\* Add 10" for Roof Air Conditioner

† = Estimated at time of printing

• = ST225/75R15C

o = ST205/75R15C

X = ST225/75R15D

**Base Weight:** The weight of the unit with no fluids, cargo, optional equipment or accessories.**GVWR (Gross Vehicle Weight Rating):** The maximum permissible weight of the unit, including the Base Weight plus all fluids, cargo, optional equipment and accessories. For safety and product performance, do not exceed the GVWR.**Carrying Capacity:** The difference between the Base Weight and the GVWR. This is the amount of weight available for all fluids, cargo, optional equipment and accessories. The actual "loaded" weight will depend on the equipped unit and the owner's individual choice of cargo, etc.**Wider Widths:** Numerous Coachmen floorplans feature the "wide body" design concept, which gives you significantly enhanced interior living space and innovative floorplans.

In making your purchase decision, you should be aware that a few states restrict access on some or all roads within the state to vehicles with a maximum 96" width, although special road usage permits may be available. Vehicles up to 102" in width are permitted in the vast majority of states. You should

confirm the road usage laws in the states of interest to you before making your purchase decision. If width is of concern to you, we invite you to consider the broad array of other Coachmen models offered in the standard 96" width.

All information contained in this brochure is believed to be accurate at the time of publication. However, during the model year, it may be necessary to make revisions and Coachmen reserves the right to make all such changes without notice, including changes in prices, colors, materials, equipment and specifications, as well as the addition of new models and the discontinuance of models shown in this brochure. Therefore, please consult with your Coachmen dealer and confirm the existence of any materials, design or specifications that are material to your purchase decision.



## Standard Features

### INTERIOR AND DECOR

Golden Cherry Finish Cabinets	•	•	•	•	•	•	•	•	•	•	•	•	•	•	•
Residential Metal Drawer Glides	•	•	•	•	•	•	•	•	•	•	•	•	•	•	•
Partial Carpet with Pad	•	•	•	•	•	•	•	•	•	•	•	•	•	•	•
Linoleum Flooring - Kitchen & Bath	•	•	•	•	•	•	•	•	•	•	•	•	•	•	•
Mini Blinds - Coach	•	•	•	•	•	•	•	•	•	•	•	•	•	•	•
Mini Blinds - Bedroom (Except w/Bunks)	•	•	•	•	•	•	•	•	•	•	•	•	•	•	•
Radius Windows	•	•	•	•	•	•	•	•	•	•	•	•	•	•	•
Side Dinette	•	•	•	•	•	•	•	•	•	•	•	•	•	•	•
Jack Knife Sofa	•	•	•	•	•	•	•	•	•	•	•	•	•	•	•
Swivel Rocker	•	•	•	•	•	•	•	•	•	•	•	•	•	•	•
Four Prewired Stereo Speakers	•	•	•	•	•	•	•	•	•	•	•	•	•	•	•
Cable TV Jack	•	•	•	•	•	•	•	•	•	•	•	•	•	•	•
TV Antenna and Rotor Package	•	•	•	•	•	•	•	•	•	•	•	•	•	•	•
TV Shelf - Bedroom	•	•	•	•	•	•	•	•	•	•	•	•	•	•	•
LP Leak Alarm	•	•	•	•	•	•	•	•	•	•	•	•	•	•	•
Prewired for Satellite Dish	•	•	•	•	•	•	•	•	•	•	•	•	•	•	•

### GALLEY

Microwave Ready	•	•	•	•	•	•	•	•	•	•	•	•	•	•	•
3-Burner (High Output) Range with Oven	•	•	•	•	•	•	•	•	•	•	•	•	•	•	•
Power/Lighted Range Hood	•	•	•	•	•	•	•	•	•	•	•	•	•	•	•
Flush Mount, Double Door Refrigerator	•	•	•	•	•	•	•	•	•	•	•	•	•	•	•
Monitor Panel	•	•	•	•	•	•	•	•	•	•	•	•	•	•	•
Stainless Steel Sink	•	•	•	•	•	•	•	•	•	•	•	•	•	•	•
Silverware Drawer	•	•	•	•	•	•	•	•	•	•	•	•	•	•	•

### SLEEPING

Queen Bed	•	•	•	•	•	•	•	•	•	•	•	•	•	•	•
Double Bed	•	•	•	•	•	•	•	•	•	•	•	•	•	•	•
Bunk Beds	•	•	•	•	•	•	•	•	•	•	•	•	•	•	•
Deluxe innerspring Mattress-312 Coil	•	•	•	•	•	•	•	•	•	•	•	•	•	•	•
Bedspring and Pillow Shams	•	•	•	•	•	•	•	•	•	•	•	•	•	•	•
Bedlift System on Island DB or QB	•	•	•	•	•	•	•	•	•	•	•	•	•	•	•

### BATH AND WATER

Marine Toilet	•	•	•	•	•	•	•	•	•	•	•	•	•	•	•
Power Bath Vent	•	•	•	•	•	•	•	•	•	•	•	•	•	•	•
One-Piece ABS Tub Surround	•	•	•	•	•	•	•	•	•	•	•	•	•	•	•
6-Gallon Water Heater	•	•	•	•	•	•	•	•	•	•	•	•	•	•	•
Water Heater By-Pass Valve	•	•	•	•	•	•	•	•	•	•	•	•	•	•	•
Demand Water Pump	•	•	•	•	•	•	•	•	•	•	•	•	•	•	•
Decorative Bath Hardware	•	•	•	•	•	•	•	•	•	•	•	•	•	•	•
Medicine Cabinet	•	•	•	•	•	•	•	•	•	•	•	•	•	•	•

### ELECTRICAL/HEATING/AIR COND.

Outside Receptacle GFI	•	•	•	•	•	•	•	•	•	•	•	•	•	•	•
Patio Light	•	•	•	•	•	•	•	•	•	•	•	•	•	•	•
Off Door Side Utility Light	•	•	•	•	•	•	•	•	•	•	•	•	•	•	•
LP Light	•	•	•	•	•	•	•	•	•	•	•	•	•	•	•
Double 30 LB LP Bottles w/Auto Change-Over	•	•	•	•	•	•	•	•	•	•	•	•	•	•	•
31,000 BTU E.I. Furnace	•	•	•	•	•	•	•	•	•	•	•	•	•	•	•
35,000 BTU E.I. Furnace	•	•	•	•	•	•	•	•	•	•	•	•	•	•	•
40,000 BTU E.I. Furnace	•	•	•	•	•	•	•	•	•	•	•	•	•	•	•
In-Floor Ducted Heat	•	•	•	•	•	•	•	•	•	•	•	•	•	•	•
Prewired for Roof Air Conditioning	•	•	•	•	•	•	•	•	•	•	•	•	•	•	•

### EXTERIOR/ CONSTRUCTION

Rubber Roof	•	•	•	•	•	•	•	•	•	•	•	•	•	•	•
Fiberglass Insulation	•	•	•	•	•	•	•	•	•	•	•	•	•	•	•
Gutter Rail	•	•	•	•	•	•	•	•	•	•	•	•	•	•	•
30" Wide Entrance Door	•	•	•	•	•	•	•	•	•	•	•	•	•	•	•
Rear Hose Storage Steel Bumper	•	•	•	•	•	•	•	•	•	•	•	•	•	•	•
Double Entry Step - Primary Door	•	•	•	•	•	•	•	•	•	•	•	•	•	•	•
Triple Entry Steps at Primary Door	•	•	•	•	•	•	•	•	•	•	•	•	•	•	•
Dead Bolt Lock(s)	•	•	•	•	•	•	•	•	•	•	•	•	•	•	•
Secondary Entrance Door	•	•	•	•	•	•	•	•	•	•	•	•	•	•	•
Rack & Pinion Slide-Out Room	•	•	•	•	•	•	•	•	•	•	•	•	•	•	•
Retractable Stabilizer Jacks	•	•	•	•	•	•	•	•	•	•	•	•	•	•	•
Straight Axles	•	•	•	•	•	•	•	•	•	•	•	•	•	•	•
Radial Tires	•	•	•	•	•	•	•	•	•	•	•	•	•	•	•
Rally Wheels	•	•	•	•	•	•	•	•	•	•	•	•	•	•	•
Clear Safety Glass Radius Windows	•	•	•	•	•	•	•	•	•	•	•	•	•	•	•

## Optional Features

- ☐ Rear Double Bed (364TBS)
- ☐ Twin Beds (297RKS, 299TB, 364TBS)
- ☐ Bunk Beds (364TBS)
- ☐ Hardwood Raised Panel Doors
- ☐ Two Bar Stools (295RBS, 338FLS, 364TBS, 366TBS)
- ☐ Three Bar Stools (361FLS)
- ☐ Free-Standing Dinette w/2 Chairs (271FK, 298FK, 310WB)
- ☐ Free-Standing Dinette w/4 Chairs (291FLS, 297RKS, 300TBS, 338FLS, 340SA, 348FKS, 361FLS, 364TBS, 366TBS)
- ☐ Lounge Chairs w/Table (361FLS)
- ☐ Deluxe Sofa w/Hide-a-bed (291FLS, 297RKS, 338FLS, 340SA, 348FKS, 364TBS, 366TBS)
- ☐ Rear Dinette with Rear Door (364TBS)
- ☐ Complete Elite Satellite System
- ☐ Entertainment Center (364TBS) (Replaces Swivel Rocker)
- ☐ Residential AM/FM Stereo w/Cassette and CD
- ☐ Outside Entertainment Center
- ☐ Washer/Dryer Ready (338FLS, 348FKS, 364TBS) Includes Plumbing and 10-Gallon Gas/Electric Water Heater)(Except on 338FLS with Walk Thru Bath Option)
- ☐ Combo: Washer and Dryer (338FLS, 348FKS, 364TBS)(Includes Plumbing and 10-Gallon Gas/Electric Water Heater)(Except on 338FLS with Walk Thru Bath Option)
- ☐ Phone Jack
- ☐ Swivel Rocker (270RBS)
- ☐ Wall Hugger Recliner (Except on 271FK, 300TBS, 361FLS, 366TBS)
- ☐ 13" Color TV (Except on 291FLS, 338FLS, 340SA, 361FLS)
- ☐ 25" Color TV (291FLS, 338FLS, 340SA, 361FLS)
- ☐ Large, Flush Mount, Dbl. Door Refer (291FLS Thru 366TBS)
- ☐ Residential Size Microwave Oven
- ☐ 6-gallon Gas/Electric E.I. Water Heater
- ☐ 6-Gallon E.I. Water Heater
- ☐ 10-Gallon Gas/Electric E.I. Water Heater (338FLS, 348FKS, 364TBS)
- ☐ Bifold Shower Door (310WB, 338FLS, 348FKS, 366TBS)(Available on 338FLS with Walk Thru Bath Option Only)
- ☐ Walk Thru Bath (338FLS)
- ☐ Outside Shower
- ☐ Foam Core Insulation Package
- ☐ Tinted Safety Glass - Radius Windows
- ☐ ODS Secondary Entry Door (270RBS)
- ☐ Ducted Roof Air Conditioning
- ☐ 2nd 13,500BTU Roof Air Conditioner (291FLS, 299TB, 310WB & up)
- ☐ Wire and Frame 2nd Air Conditioner (291FLS, 299TB, 310WB & up)
- ☐ 50 Amp. Service (291FLS, 299TB, 310WB & up) (Mandatory with 2nd Roof A/C and Wire and Frame for 2nd A/C Options)
- ☐ LP Bottle Cover
- ☐ Power Hitch Jack
- ☐ Spare Tire Kit (271FK Thru 310WB) (Except 291FLS & 300TBS) C-Range
- ☐ Spare Tire Kit (291FLS, 300TBS, 340SA & up) D-Range
- ☐ Retractable Stabilizer Jacks (Non-Slide Models)(Standard on Slide Models)
- ☐ Straight Axle (Non-Slide Models)
- ☐ Awning
- ☐ Slide-Out Room Awning - Bedroom (340SA, 361FLS, 366TBS)
- ☐ Slide-Out Room Awning - Coach (All Slide Models)
- ☐ CSA Upfit - (Except on Wide-body) (Mandatory For All Canadian Provinces)
- ☐ Filon® Fiberglass Sidewalls (270RBS, 271FK, 298FK, 299TB)



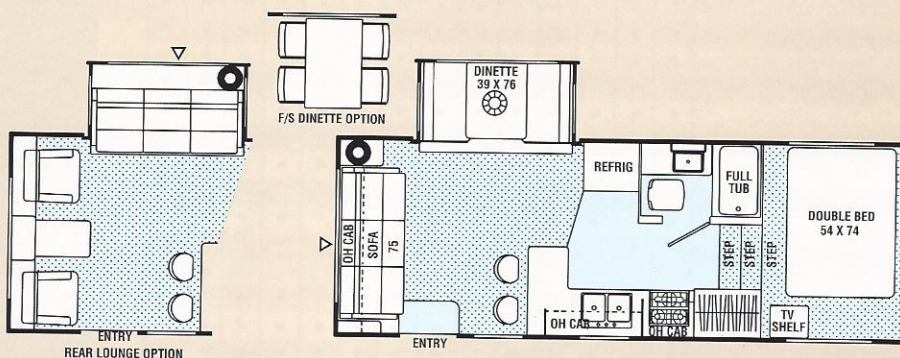
# Catalina

for the new millennium



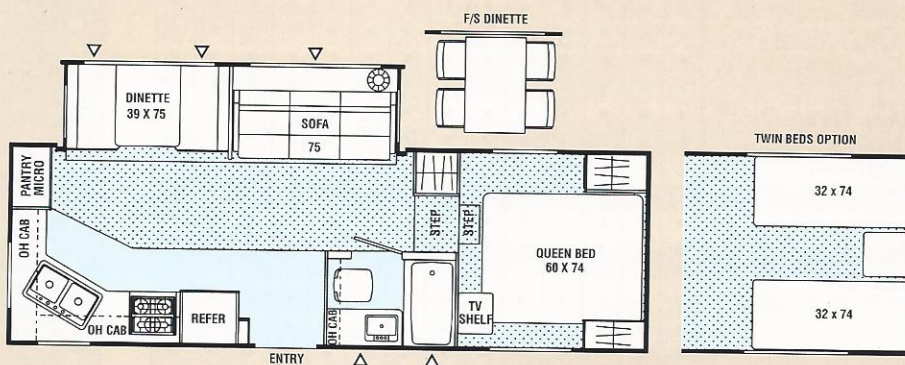
## 237rls / Rear Lounge / Slide Out / Wide Body

Optional Filon® Fiberglass Sidewalls Available



## 245rks / Rear Lounge / Slide Out

Optional Filon® Fiberglass Sidewalls Available



INDICATES CARPETING

INDICATES OUTSIDE STORAGE LOCATION





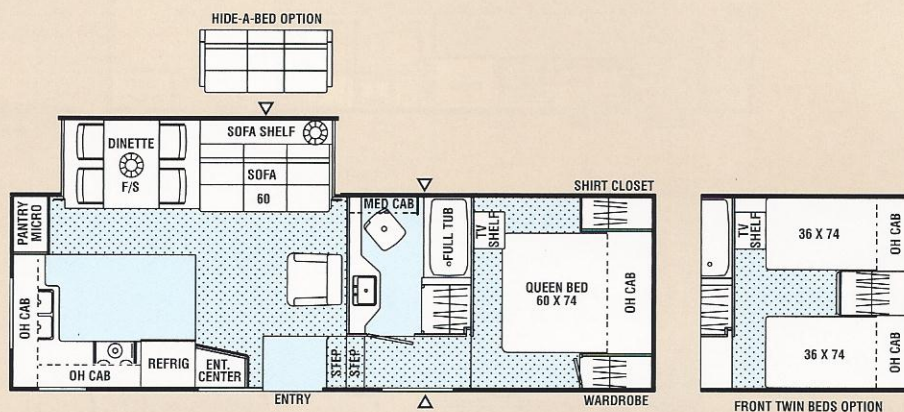


# Catalina

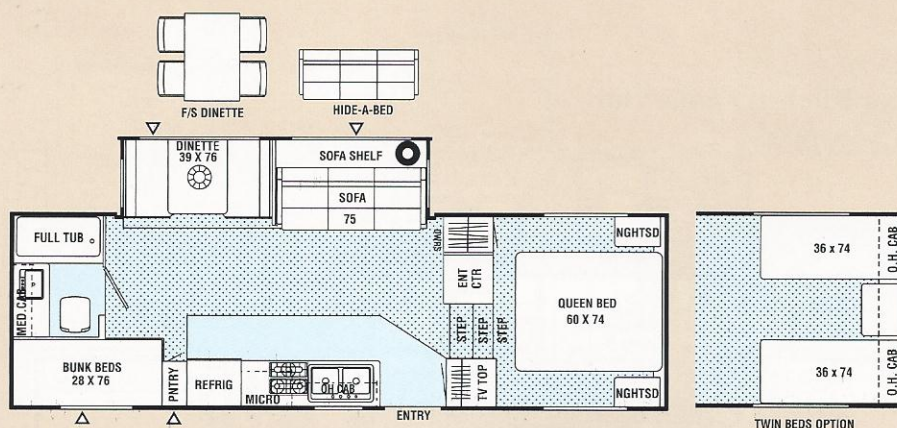
*for the new millennium*



## 279sa / Side Aisle / Slide Out



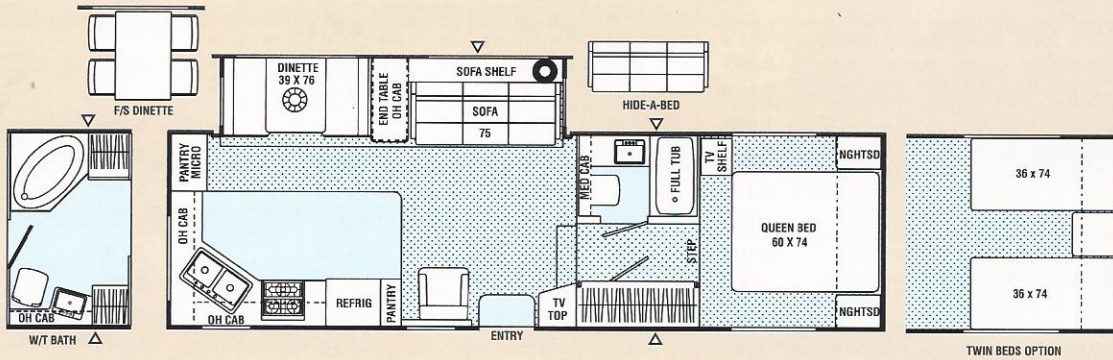
## 281tbs / Two Bedroom / Slide Out / Wide Body



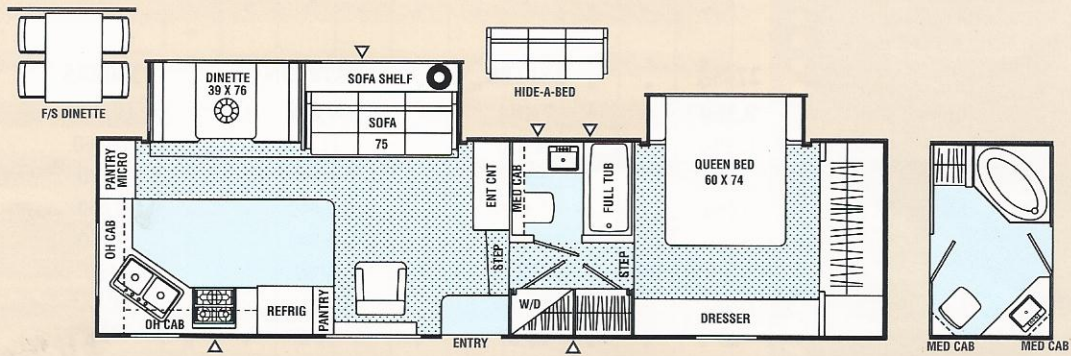
- INDICATES CARPETING
- INDICATES OUTSIDE STORAGE LOCATION



## 285rksn / Rear Kitchen / Slide Out / High Profile

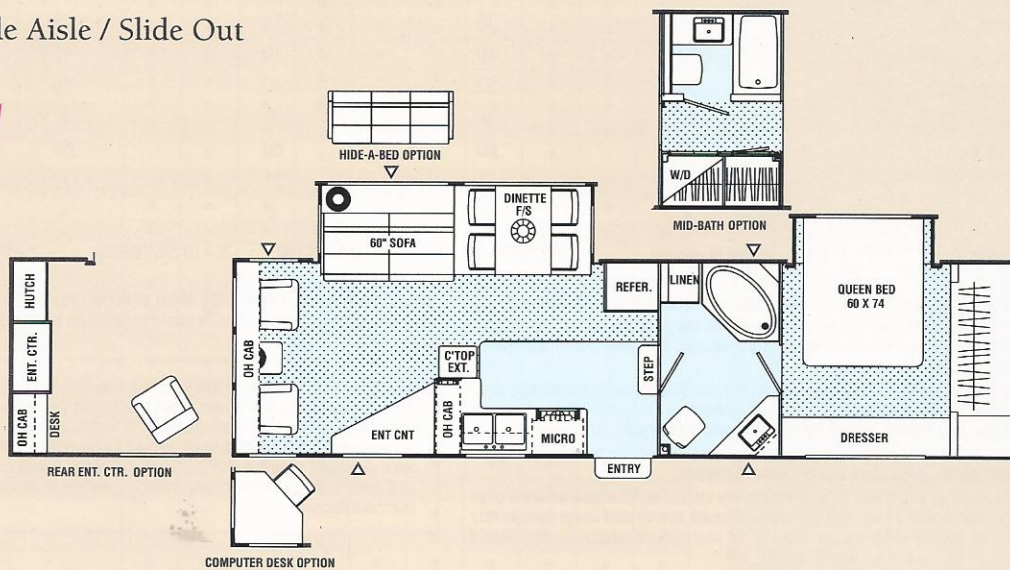


## 320rks / Rear Kitchen / Slide Out / High Profile



## 325rls / Side Aisle / Slide Out

**NEW**





## for the new millennium

## Specifications

	237RLS	245RKS	251RLS	275RK	278RKS
Base Weight	5,976	6,753	6,811	5,761	7,440
GVWR	8,000	9,770	9,270	8,120	9,300
Carrying Capacity	2,033	3,017	2,459	2,359	1,860
Hitch Weight	1,000	1,770	1,270	1,120	1,300
Axle Weight	4,967	4,983	5,541	4,641	6,140
Interior Height	6' 10"	6' 10"	6' 10"	6' 10"	6' 10"
Exterior Height*	10' 5"	11' 2"	11' 2"	11' 2"	11' 2"
Exterior Length	24' 10"	25' 9"	25' 9"	28' 8"	29' 1"
Exterior Width	8' 5"	7' 10"	7' 10"	7' 10"	7' 10"
Hitch Pin Height	46" **	46" **	46" **	46" **	46" **
Sleeping Capacity	6/4	6	6	6/4	6/4
Fresh Water Capacity (gal.)	36	30	42	30	42
Waste Water Capacity (gal.)	42	42	42	42	42
Grey Water Capacity (gal.)	42	42	42	42	42
Water Heater Capacity	6	6	6	6	6
LP Gas Capacity (lb.)	60	60	60	60	60
Furnace Rating (x 1,000)	25	31	31	31	31
Tire Size	o	•	•	o	•

	279SA	281TBS	285RKS	320RKS	325RLS
Base Weight	8,266	7,480	8,666	10,270	10,300†
GVWR	12,050	11,430	11,860	14,660	14,450†
Carrying Capacity	3,784	3,950	3,194	4,390	4,150†
Hitch Weight	2,050	1,430	1,860	2,660	2,450†
Axle Weight	6,216	6,050	6,806	7,610	7,850†
Interior Height	6' 10"	6' 10"	6' 10"	6' 10"	6' 10"
Exterior Height*	11' 10"	11' 2"	11' 10"	11' 11"	11' 11"
Exterior Length	28'	28' 8"	30' 8"	33' 8"	33' 8"
Exterior Width	8' 5"	8' 5"	7' 10"	8' 5"	8' 5"
Hitch Pin Height	45"	46" **	45"	45"	45"
Sleeping Capacity	4	8/6	6/4	4/6	4
Fresh Water Capacity (gal.)	53	36	53	53	50
Waste Water Capacity (gal.)	50	40	40	40	50
Grey Water Capacity (gal.)	50	32	40	40	50
Water Heater Capacity	6	6	6	6	6
LP Gas Capacity (lb.)	60	60	60	60	60
Furnace Rating (x 1,000)	31	31	31	35	35
Tire Size	•	•	x	*	*

\* Add 10" for Roof Air Conditioner

† = Estimated at time of printing

• = ST225/75R15C

o = ST205/75R15C

x = ST225/75R15D

\* = LT235/85R16E

**Base Weight:** The weight of the unit with no fluids, cargo, optional equipment or accessories.**GVWR (Gross Vehicle Weight Rating):** The maximum permissible weight of the unit, including the Base Weight plus all fluids, cargo, optional equipment and accessories. For safety and product performance, do not exceed the GVWR.**Carrying Capacity:** The difference between the Base Weight and the GVWR. This is the amount of weight available for all fluids, cargo, optional equipment and accessories. The actual "loaded" weight will depend on the equipped unit and the owner's individual choice of cargo, etc.**Wider Widths:** Numerous Coachmen floorplans feature the "wide body" design concept, which gives you significantly enhanced interior living space and innovative floorplans.

In making your purchase decision, you should be aware that a few states restrict access on some or all roads within the state to vehicles with a maximum 96" width, although special road usage permits may be available. Vehicles up to 102" in width are permitted in the vast majority of states. You should

confirm the road usage laws in the states of interest to you before making your purchase decision. If width is of concern to you, we invite you to consider the broad array of other Coachmen models offered in the standard 96" width.

All information contained in this brochure is believed to be accurate at the time of publication. However, during the model year, it may be necessary to make revisions and Coachmen reserves the right to make all such changes without notice, including changes in prices, colors, materials, equipment and specifications, as well as the addition of new models and the discontinuance of models shown in this brochure. Therefore, please consult with your Coachmen dealer and confirm the existence of any materials, design or specifications that are material to your purchase decision.



## Standard Features

### INTERIOR AND DECOR

	237RLS	245RKS	251RLS	275RK	278RKS	279SA	281TBS	285RKS	320RKS	325RLS
Golden Cherry Finish Cabinets	•	•	•	•	•	•	•	•	•	•
Residential Metal Drawer Glides	•	•	•	•	•	•	•	•	•	•
Carpet with Pad - Living Room & Bedroom	•	•	•	•	•	•	•	•	•	•
Linoleum Flooring - Kitchen & Bath	•	•	•	•	•	•	•	•	•	•
Mini Blinds - Coach	•	•	•	•	•	•	•	•	•	•
Mini Blinds - Bedroom	•	•	•	•	•	•	•	•	•	•
Mini Blinds - Kitchen	•	•	•	•	•	•	•	•	•	•
Radius Windows	•	•	•	•	•	•	•	•	•	•
Side Dinette	•	•	•	•	•	•	•	•	•	•
Jack Knife Sofa	•	•	•	•	•	•	•	•	•	•
Swivel Rocker	•	•	•	•	•	•	•	•	•	•
Four Prewired Stereo Speakers	•	•	•	•	•	•	•	•	•	•
Cable TV Jack	•	•	•	•	•	•	•	•	•	•
TV Antenna and Rotor Package	•	•	•	•	•	•	•	•	•	•
TV Shelf - Bedroom	•	•	•	•	•	•	•	•	•	•
LP Leak Alarm	•	•	•	•	•	•	•	•	•	•
Trash Can	•	•	•	•	•	•	•	•	•	•
Prewired for Satellite Dish	•	•	•	•	•	•	•	•	•	•
Free Standing Dinette	•	•	•	•	•	•	•	•	•	•

### GALLEY

Microwave Ready	•	•	•	•	•	•	•	•	•	•
3-Burner (High Output) Range with Oven	•	•	•	•	•	•	•	•	•	•
Power/Lighted Range Hood	•	•	•	•	•	•	•	•	•	•
Flush Mount, Double Door Refrigerator	•	•	•	•	•	•	•	•	•	•
Monitor Panel	•	•	•	•	•	•	•	•	•	•
Stainless Steel Sink	•	•	•	•	•	•	•	•	•	•
Silverware Drawer	•	•	•	•	•	•	•	•	•	•

### SLEEPING

Queen Bed	•	•	•	•	•	•	•	•	•	•
Double Bed	•	•	•	•	•	•	•	•	•	•
Deluxe innerspring Mattress-312 Coil	•	•	•	•	•	•	•	•	•	•
Bedsprad and Pillow Shams	•	•	•	•	•	•	•	•	•	•
Bedlift System on Island DB or QB	•	•	•	•	•	•	•	•	•	•

### BATH AND WATER

Marine Toilet	•	•	•	•	•	•	•	•	•	•
Power Bath Vent	•	•	•	•	•	•	•	•	•	•
One-Piece ABS Tub Surround	•	•	•	•	•	•	•	•	•	•
6-Gallon Water Heater	•	•	•	•	•	•	•	•	•	•
Water Heater By-Pass Valve	•	•	•	•	•	•	•	•	•	•
Demand Water Pump	•	•	•	•	•	•	•	•	•	•
Decorative Bath Hardware	•	•	•	•	•	•	•	•	•	•
Medicine Cabinet	•	•	•	•	•	•	•	•	•	•

### ELECTRICAL/HEATING/AIR COND.

Outside Receptacle GFI	•	•	•	•	•	•	•	•	•	•
30 - Amp Power Cord	•	•	•	•	•	•	•	•	•	•
GFI Circuit	•	•	•	•	•	•	•	•	•	•
Patio Light	•	•	•	•	•	•	•	•	•	•
Off Door Side Utility Light	•	•	•	•	•	•	•	•	•	•
Hitch Light	•	•	•	•	•	•	•	•	•	•
Double 30 LB LP Bottles w/Auto Change-Over	•	•	•	•	•	•	•	•	•	•
25,000 BTU E.I. Furnace	•	•	•	•	•	•	•	•	•	•
31,000 BTU E.I. Furnace	•	•	•	•	•	•	•	•	•	•
35,000 BTU E.I. Furnace	•	•	•	•	•	•	•	•	•	•
In-Floor Ducted Heat	•	•	•	•	•	•	•	•	•	•
Prewired for Roof Air Conditioning	•	•	•	•	•	•	•	•	•	•

### EXTERIOR/CONSTRUCTION

Rubber Roof	•	•	•	•	•	•	•	•	•	•
Fiberglass Insulation	•	•	•	•	•	•	•	•	•	•
Awning Rail	•	•	•	•	•	•	•	•	•	•
30" Wide Entrance Door	•	•	•	•	•	•	•	•	•	•
Rear Hose Storage Steel Bumper	•	•	•	•	•	•	•	•	•	•
Manual Slide Room	•	•	•	•	•	•	•	•	•	•
Prewired for Electric Slide Room	•	•	•	•	•	•	•	•	•	•
Triple Entry Steps at Primary Door	•	•	•	•	•	•	•	•	•	•
Dead Bolt Lock(s)	•	•	•	•	•	•	•	•	•	•
Electric Slide Room	•	•	•	•	•	•	•	•	•	•
Retractable Stabilizer Jacks	•	•	•	•	•	•	•	•	•	•
Radial Tires	•	•	•	•	•	•	•	•	•	•
Rally Wheels	•	•	•	•	•	•	•	•	•	•

## Optional Features

- ☐ Twin Beds (Except on 237RLS, 320RKS, 325RLS)
- ☐ Hardwood Raised Panel Doors (237RLS Thru 285RKS)
- ☐ Hardwood Raised Panel Doors (320RKS & Larger)
- ☐ Two Bar Stools (237RLS)
- ☐ Free Standing Dinette w/2 Chairs (275RK)
- ☐ Free Standing Dinette w/4 Chairs (Except 275RK)
- ☐ Rear Lounge (237RLS) (Includes Two Swivel Rockers and a Jack Knife Sofa)
- ☐ Deluxe Sofa w/Hide-A-Bed (Slide Models) (Except on 237RLS, 245RKS, 275RK)
- ☐ Rear Entertainment Center (325RLS)
- ☐ Residential AM/FM Stereo w/Cassette & CD
- ☐ Wall Hugger Recliner (Except on 237RLS, 245RKS, 281TBS) (Available Only with 2nd Wall Hugger Recliner on 325RLS)
- ☐ Outside Entertainment Center
- ☐ Washer/Dryer Ready (320RKS, 325RLS) (Includes Plumbing and 10-Gallon Gas/Electric E.I. Water Heater) (Requires 50-Amp. Service) (Except on 320RKS or 325RLS with Walk Thru Bath Option)
- ☐ Combo Washer/Dryer (320RKS, 325RLS) (Includes Plumbing and 10-Gallon Gas/Electric E.I. Water Heater) (Requires 50-Amp. Service) (Except on 320RKS or 325RLS with Walk Thru Bath Option)
- ☐ Phone Jack
- ☐ 19" Color TV (281TBS, 320RKS, 325RLS)
- ☐ 13" Color TV (278RKS, 285RKS)
- ☐ Double 8 c.f. Refers (320RKS)
- ☐ Large, Flush Mount, Double Door Refer (279RK, 269RLS & Larger)
- ☐ Residential Size Microwave Oven
- ☐ 6-Gallon Gas/Electric E.I. Water Heater
- ☐ 6-Gallon E.I. Water Heater
- ☐ 10-Gallon Gas/Electric E.I. Water Heater (320RKS, 325RLS)
- ☐ Complete Elite Satellite System
- ☐ Bifold Shower Door (278RKS, 285RKS, 320RKS, 325RLS) (Available on 278RKS, 285RKS & 320RKS with Walk Thru Bath Option Only)
- ☐ Walk Thru Bath (278RKS, 285RKS, 320RKS)
- ☐ Mid Bath (325RLS)
- ☐ Outside Shower
- ☐ Form Core Insulation Package
- ☐ Tinted Safety Glass - Radius Windows
- ☐ Ducted Roof Air Conditioning (Except on 237RLS)
- ☐ 13,500 BTU Roof Air Conditioner (237RLS Only) (Except w/Ducted A/C)
- ☐ Second 13,500 BTU Roof Air Conditioner (275RK & Up) (Requires 50-Amp. Service)
- ☐ Wire and Frame for 2nd A/C (275RK & Up) (Requires 50 Amp. Service)
- ☐ 7.0 Generator (320RKS & Larger)
- ☐ Generator Ready (320RKS & Larger)
- ☐ 50 Amp. Service (275RK & Larger) (Mandatory w/2nd Roof A/C and Wire and Frame for 2nd A/C Options)
- ☐ Electric Slide-Out Room Mechanism (237RLS)
- ☐ Electric Front Jacks - Single Motor (237RLS Thru 285RKS)
- ☐ Electric Front Jacks - Dual Motor (320RKS & Larger)
- ☐ Spare Tire Kit (237RLS)
- ☐ Spare Tire Kit (251RLS - 285RKS)
- ☐ Spare Tire Kit (320RKS & Larger) (16" Wheels)
- ☐ Luggage Rack and Ladder
- ☐ Retractable Stabilizer Jacks (275RK) (std. w/Slide Outs)
- ☐ Shock Absorbers (Except on 237RLS)
- ☐ Awning
- ☐ Slide-Out Room Awning - Bedroom (320RKS, 325RLS)
- ☐ Slide-Out Room Awning - Off Doorside (237RLS)
- ☐ Slide-Out Room Awning - Off Doorside (245RKS, 251RLS, 278RKS, 281TBS, 285RKS, 320RKS, 325RLS)
- ☐ CSA Upfit (Except on Wide-Body)
- ☐ Filon® Fiberglass Sidewalls (237RLS, 245RKS, 251RLS)



# Coachmen RV Forges Alliance with Disney

Coachmen RV Company and WALT DISNEY WORLD® Resort, respective leaders in the recreational vehicle (RV) and entertainment/family vacation industries, have formed an alliance that will allow the companies to work together into the new millennium. Coachmen is now the Official RV of Disney's Fort Wilderness Resort and Campground and Disney's Wide World of Sports™ Complex in Florida.

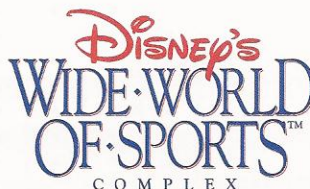
As part of this new alliance, Coachmen RV's will be prominently displayed at Disney's 750-acre campground resort. Disney's Fort Wilderness Resort and Campground, affectionately known as the "most magical campground in the World", boasts nearly 800 campsites, 700 of which are full hook-up sites for RVs. It also features over 400 deluxe Wilderness Cabins as well as various recreational and entertainment facilities. This elite resort is one of the three original vacation

resorts opened when WALT DISNEY WORLD® Resort premiered in 1971. A Coachmen RV is expected to be displayed near Pioneer Hall, home of the popular Hoop-Dee-Do

Musical Revue, the longest running dinner show at WALT DISNEY WORLD® Resort. Fort Wilderness is also being added as a premier vacation option in Coachmen's Ultimate RV™ Vacation Program.

Coachmen RV's will also be a part of the Disney magic at Disney's Wide World of Sports™ Complex. Spanning 200 acres, this ultra modern facility, features a 10,000 seat baseball stadium which is also the spring training home of the Atlanta Braves. The complex, designed for athletes and fans alike, includes numerous state-of-

the-art playing fields and venues serving a wide variety of sports. Disney's Wide World of Sports™ is truly the "ultimate sports destination".



Photographed at Disney's Fort Wilderness Resort and Campground



Photo Courtesy of Disney's Wide World of Sports™ Complex

## A Company You Can Trust Since 1964



It all began in 1964. A small company started on its way to becoming one of the most recognized names in the Recreational Vehicle industry. Right away Coachmen started earning the reputation as a leader.

From the beginning it was obvious that Coachmen is a company that cares about the products it produces and the people who enjoy them; always looking for better ways to bring the pure enjoyment

of the RV Lifestyle to more and more families.

In the nearly four decades since Coachmen's modest beginnings, countless companies have come and gone. But Coachmen has stayed the course. From product development to service after the sale, Coachmen has helped set the standards for others to follow. Many of today's product designs, manufacturing techniques and product warranties are a result of Coachmen innovations.

Coachmen—Celebrating 35 Years as "Leader to the Great Outdoors."



for the new millennium

Visit our website at: [www.coachmenrv.com](http://www.coachmenrv.com)

COACHMEN RECREATIONAL VEHICLE COMPANY

P.O. Box 30, Middlebury, IN 46540 • P.O. Box 948, Fitzgerald, GA 31750



© Copyright 1999 Coachmen Recreational Vehicle Company Litho in U.S.A. 999